

1 BEFORE THE FLORIDA PUBLIC SERVICE COMMISSION

2 SUPPLEMENTAL DIRECT TESTIMONY

3 OF

4 RANDY G. FARRAR

5
6 Q. Please state your name, occupation, and business address.

7
8 A. My name is Randy G. Farrar. I am presently employed as
9 Manager - Network Costing and Pricing for Sprint/United
10 Management Company. My business address is 2330 Shawnee
11 Mission Parkway, Westwood, Kansas, 66205.

12
13 Q. Did you file Direct Testimony in this proceeding on
14 November 5, 1996?

15
16 A. Yes, I did.

17
18 Q. What is the purpose of your supplemental direct
19 testimony?

20
21 A. The purpose is to provide the results of the TELRIC cost
22 studies; the methodologies were described in my direct
23 testimony.

24
25 Q. Are there any changes in the TELRIC methodology described

DOCUMENT NUMBER - DATE

12194 NOV 15 96

FPSC-RECORDS/REPORTING

1 in your direct testimony?

2

3 **A.** Yes, there are two changes. The first deals with
4 Sections I.B.11, Annual Charge Factors, and I.B.12,
5 Shared and Common Costs of my Direct Testimony.

6

7 Paragraph 682 of the FCC order states that the costs of
8 shared facilities and operations should be attributed to
9 the TELRIC of specific elements to the greatest extent
10 possible. Therefore, in Section I.B.12, which describes
11 the derivation of the common cost factor, only common
12 costs (accounts 671X and 672X) are now included in the
13 calculation of that factor.

14

15 The majority of the expenses identified as shared in the
16 direct testimony are now treated as "other direct
17 operating expenses" attributable to network elements.
18 These "other direct operating expenses" are now included
19 as a component of the Annual Charge Factor used in the
20 TELRIC studies.

21

22 **Q.** What is the second change?

23

24 **A.** Sprint has identified and provided cost support and
25 prices for an additional (eleventh) network element, 911

1 Tandem Trunks and Ports.

2

3

4 Q. Would you please address the actual TELRIC cost studies?

5

6 A. Composite Exhibit No. RGF-3, titled "Unbundled Network
7 Elements Cost Studies," consists of fourteen parts (A
8 through N) which sets forth the development of the costs
9 of the unbundled network elements and call termination.
10 This exhibit also provides the cost data for the Common
11 Cost Study (Part O) and the Annual Charge Factors (Part
12 P).

13

14 Q. Has Sprint completed TELRIC studies for all unbundled
15 network elements?

16

17 A. No. There are several unbundled network elements for
18 which Sprint has not completed TELRIC studies. These
19 elements are identified in Exhibit No. MRH-6, sponsored
20 by Mr. Hunsucker in his Supplemental Direct Testimony.

21

22 Q. Does this conclude your supplemental direct testimony.

23

24 A. Yes, it does.

25

jjw\utd\farrar-s.230

AVOIDED COST STUDY
USER GUIDE

Sprint Corporation

November 2, 1996

Table of Contents

- A. Local Loops
- B. Cross-Connect Facilities
- C. Network Interface Device
- D. Local Switching
- E. Tandem Switching
- F. Loop, Port & NID Combination Discount
- G. Call Termination
- H. Common Channel Signaling Interconnection Service
- I. Line Information Database Service
- J. Directory assistance Database Listing & Update Service
- K. Directory Assistance - Database Query Service
- L. Toll & Local Operator Service
- M. Directory Assistance Operator Service
- N. 911 Tandem Port & Trunks
- O. Common Cost Study
- P. Annual Charge Factors

***UNBUNDLED NETWORK
ELEMENTS COST STUDIES***

A.

Local Loops

Company: Sprint - Florida

Rate Element: Local Loops

State	Loop Type	Band	Percent of Loops	Weighted Avg Cost	Common	Loop Price	
Florida	2 wire voice grade						
		\$0-\$11.99	1	14.10%	8.87	0.145832	10.16
		\$12.00-\$16.99	2	17.40%	14.90	0.145832	17.07
		\$17.00-\$21.99	3	22.00%	19.36	0.145832	22.18
		\$22.00-\$26.99	4	16.60%	24.15	0.145832	27.67
		\$27.00-\$31.99	5	9.30%	29.31	0.145832	33.58
		\$32.00-\$41.99	6	8.10%	36.33	0.145832	41.63
		\$42.00-\$54.99	7	7.20%	47.81	0.145832	54.78
		\$55.00+	8	5.20%	68.52	0.145832	78.51
		4 wire voice grade					
			1		14.90	0.145832	17.07
			2		25.03	0.145832	28.68
			3		32.52	0.145832	37.27
			4		40.57	0.145832	46.49
			5		49.24	0.145832	56.42
			6		61.03	0.145832	69.94
		7		80.32	0.145832	92.03	
		8		115.11	0.145832	131.90	

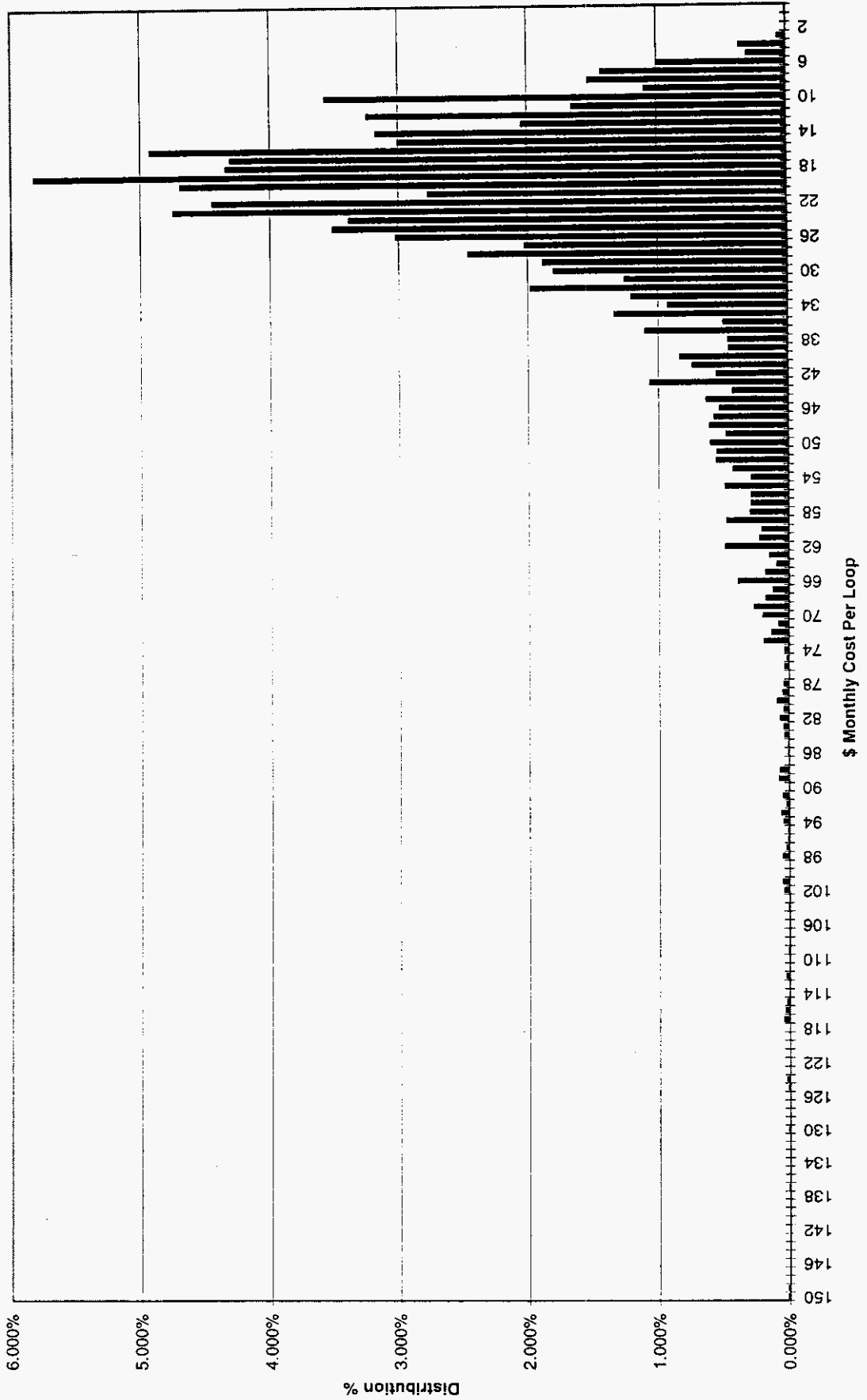
Florida Cost Support for 4 wire Voice Grade Loop

BCM Investment in Copper	\$ 1,150,167,170
BCM 2 Investment in Fiber	\$ 113,617,877
BCM 2 Investment in Circuit Equipment (DLC)	\$ 431,644,567
Total OSP investment from Proxy model	<u>\$ 1,695,429,614</u>
BCM 2 Investment Times 2 (two pair are required)	\$ 2,300,334,341
BCM 2 Investment in Fiber	\$ 113,617,877
BCM 2 Investment in Circuit Equipment (DLC)	\$ 431,644,567
Invest. to provide 4 wire VG loop to end user	\$ 2,845,596,785
Ratio of 4 wire VG loop to 2 wire loop	1.68

Ratio should be applied to cost of two wire voice grade loop to adjust the cost to reflect the additional pair of copper wires utilized in a circuit provisioned as a "4-wire" loop.

In the provisioning of a 4 wire loop, the circuit is separated into the transmit and receive signals, placing them on physically separate paths. Using the BCM 2 model, the investments representing copper distribution and drop, loop pair gain devices and fiber feeder plant are identified uniquely. An investment is calculated which represents the use of two copper pairs (4 wires) plus the necessary circuit equipment and feeder plant. This investment is compared to the investment required for the standard two wire loop configuration. The ratio between the two investments suggests that a 4 wire loop utilizes 68% more investment than the normal two wire loop configuration. Once a circuit is transformed into an electronic equivalent of an analog loop, it is normally separated into two unique transmission paths which are effectively a 4 wire circuit, therefore no additional investment is utilized or required to provision the 4 wire circuit vs a 2 wire loop.

Loop Cost Distribution - Sprint Florida



LOOP COST CALCULATIONS BY CENSUS BLOCK GROUP

FLORIDA	Census Block Group Number	Monthly Cost	Total CBG Lines Served	Percent of Total Lines
BAND 1	120730013003	\$ 2.18	584	0.034%
BAND 1	120710001002	\$ 2.55	210	0.012%
BAND 1	120830014005	\$ 2.82	155	0.009%
BAND 1	120830019003	\$ 3.11	949	0.055%
BAND 1	121170219022	\$ 3.12	557	0.033%
BAND 1	120730001001	\$ 3.86	3,837	0.224%
BAND 1	120950160013	\$ 3.88	681	0.040%
BAND 1	120950159012	\$ 4.21	2,411	0.141%
BAND 1	120150203002	\$ 4.42	1,010	0.059%
BAND 1	120950159013	\$ 4.81	1,602	0.094%
BAND 1	120730006003	\$ 5.19	1,688	0.099%
BAND 1	120950152011	\$ 5.24	1,464	0.086%
BAND 1	120910225004	\$ 5.30	436	0.025%
BAND 1	120730002004	\$ 5.44	2,650	0.155%
BAND 1	120910226002	\$ 5.51	1,924	0.112%
BAND 1	120730005002	\$ 5.52	2,557	0.149%
BAND 1	120730009025	\$ 5.52	2,961	0.173%
BAND 1	120730002003	\$ 5.69	1,775	0.104%
BAND 1	121170219023	\$ 5.82	1,495	0.087%
BAND 1	120710011002	\$ 6.04	2,230	0.130%
BAND 1	120210001003	\$ 6.21	906	0.053%
BAND 1	120710008002	\$ 6.24	2,434	0.142%
BAND 1	120559608004	\$ 6.24	698	0.041%
BAND 1	120830019006	\$ 6.33	916	0.054%
BAND 1	120730020022	\$ 6.44	2,711	0.158%
BAND 1	120210001006	\$ 6.46	1,941	0.113%
BAND 1	120950160023	\$ 6.57	1,333	0.078%
BAND 1	120710011006	\$ 6.58	4,006	0.234%
BAND 1	120730006001	\$ 6.64	5,082	0.297%
BAND 1	120210001004	\$ 6.76	1,759	0.103%
BAND 1	120830019001	\$ 6.98	317	0.019%
BAND 1	120210007001	\$ 7.03	1,969	0.115%
BAND 1	120690309112	\$ 7.09	929	0.054%
BAND 1	120910220001	\$ 7.10	1,585	0.093%
BAND 1	121319502003	\$ 7.12	587	0.034%
BAND 1	120710007001	\$ 7.12	733	0.043%
BAND 1	120910215004	\$ 7.13	384	0.022%
BAND 1	120830019002	\$ 7.18	1,039	0.061%
BAND 1	120690306022	\$ 7.24	684	0.040%
BAND 1	120150103002	\$ 7.32	3,769	0.220%
BAND 1	120730016011	\$ 7.42	1,001	0.059%
BAND 1	120950159022	\$ 7.44	1,365	0.080%
BAND 1	120950176004	\$ 7.52	455	0.027%
BAND 1	120950127021	\$ 7.54	3,415	0.200%
BAND 1	120599604003	\$ 7.62	774	0.045%
BAND 1	120730007002	\$ 7.73	1,241	0.073%

FLORIDA	Census Block Group Number	Monthly Cost	Total CBG Lines Served	Percent of Total Lines
BAND 1	120710001001	\$ 7.88	1,055	0.062%
BAND 1	120950159011	\$ 7.91	1,916	0.112%
BAND 1	120690306024	\$ 7.94	1,235	0.072%
BAND 1	120830011011	\$ 7.95	2,006	0.117%
BAND 1	120730002001	\$ 8.01	1,654	0.097%
BAND 1	120730015003	\$ 8.08	2,128	0.124%
BAND 1	121170219026	\$ 8.17	1,097	0.064%
BAND 1	120830019007	\$ 8.21	1,180	0.069%
BAND 1	120950160012	\$ 8.22	632	0.037%
BAND 1	120950154011	\$ 8.26	488	0.028%
BAND 1	120710002002	\$ 8.31	1,095	0.064%
BAND 1	120910205004	\$ 8.36	924	0.054%
BAND 1	120710005014	\$ 8.36	1,210	0.071%
BAND 1	121170220012	\$ 8.41	1,121	0.066%
BAND 1	121319502002	\$ 8.50	792	0.046%
BAND 1	120950159021	\$ 8.56	1,962	0.115%
BAND 1	120730004001	\$ 8.72	443	0.026%
BAND 1	121010326004	\$ 8.73	524	0.031%
BAND 1	120639805003	\$ 8.84	858	0.050%
BAND 1	120950155012	\$ 8.89	1,342	0.078%
BAND 1	120730005001	\$ 8.99	1,183	0.069%
BAND 1	120210107003	\$ 9.01	2,678	0.156%
BAND 1	120950171021	\$ 9.05	21,092	1.232%
BAND 1	120910226001	\$ 9.05	1,353	0.079%
BAND 1	120970403014	\$ 9.08	1,438	0.084%
BAND 1	120950154023	\$ 9.12	1,234	0.072%
BAND 1	120210001005	\$ 9.14	691	0.040%
BAND 1	120830017002	\$ 9.21	1,551	0.091%
BAND 1	120830020011	\$ 9.22	1,487	0.087%
BAND 1	120730007003	\$ 9.28	634	0.037%
BAND 1	120939906001	\$ 9.32	638	0.037%
BAND 1	120910216002	\$ 9.34	1,175	0.069%
BAND 1	120730003001	\$ 9.41	1,357	0.079%
BAND 1	120690308011	\$ 9.49	927	0.054%
BAND 1	120730020024	\$ 9.56	451	0.026%
BAND 1	120690309116	\$ 9.58	559	0.033%
BAND 1	120910221002	\$ 9.64	564	0.033%
BAND 1	120730016013	\$ 9.64	1,594	0.093%
BAND 1	120710010007	\$ 9.64	2,066	0.121%
BAND 1	120710206002	\$ 9.64	1,061	0.062%
BAND 1	120910224001	\$ 9.65	642	0.037%
BAND 1	120710010002	\$ 9.68	1,189	0.070%
BAND 1	120950170013	\$ 9.74	4,112	0.240%
BAND 1	120659801984	\$ 9.82	548	0.032%
BAND 1	121170218012	\$ 9.82	4,768	0.279%
BAND 1	120639806003	\$ 9.86	747	0.044%
BAND 1	120710011004	\$ 9.86	1,472	0.086%
BAND 1	120950164042	\$ 9.88	2,258	0.132%
BAND 1	121170215045	\$ 9.96	2,301	0.134%

FLORIDA	Census Block Group Number	Monthly Cost	Total CBG Lines Served	Percent of Total Lines
BAND 1	121270908024	\$ 9.98	416	0.024%
BAND 1	120210106002	\$ 10.12	1,074	0.063%
BAND 1	120210114002	\$ 10.12	722	0.042%
BAND 1	120710014004	\$ 10.20	901	0.053%
BAND 1	120179805004	\$ 10.23	971	0.057%
BAND 1	120730008001	\$ 10.27	799	0.047%
BAND 1	120559608003	\$ 10.28	588	0.034%
BAND 1	120690302025	\$ 10.29	567	0.033%
BAND 1	120830014014	\$ 10.37	314	0.018%
BAND 1	120710007002	\$ 10.37	1,670	0.098%
BAND 1	120730006004	\$ 10.40	631	0.037%
BAND 1	120730009014	\$ 10.46	795	0.046%
BAND 1	120830021002	\$ 10.51	1,040	0.061%
BAND 1	121170220022	\$ 10.57	433	0.025%
BAND 1	120210107004	\$ 10.63	900	0.053%
BAND 1	120210001002	\$ 10.69	644	0.038%
BAND 1	120910225001	\$ 10.70	974	0.057%
BAND 1	121170219021	\$ 10.71	668	0.039%
BAND 1	120950152012	\$ 10.76	1,862	0.109%
BAND 1	120639805004	\$ 10.77	843	0.049%
BAND 1	120910226003	\$ 10.80	1,242	0.073%
BAND 1	120210001007	\$ 10.82	762	0.045%
BAND 1	120830018003	\$ 10.84	944	0.055%
BAND 1	120710010005	\$ 10.88	1,157	0.068%
BAND 1	120690309111	\$ 10.89	1,123	0.066%
BAND 1	120830019004	\$ 10.90	649	0.038%
BAND 1	120150208002	\$ 10.93	2,134	0.125%
BAND 1	120950154022	\$ 10.93	805	0.047%
BAND 1	120950130019	\$ 10.95	811	0.047%
BAND 1	120910211002	\$ 10.98	979	0.057%
BAND 1	120559602003	\$ 10.99	1,156	0.068%
BAND 1	121270910032	\$ 11.01	1,118	0.065%
BAND 1	120710105024	\$ 11.05	626	0.037%
BAND 1	120210109005	\$ 11.05	531	0.031%
BAND 1	121010326005	\$ 11.12	378	0.022%
BAND 1	120210109006	\$ 11.13	1,103	0.064%
BAND 1	120830020012	\$ 11.15	618	0.036%
BAND 1	120910229001	\$ 11.15	2,152	0.126%
BAND 1	120730009022	\$ 11.16	1,011	0.059%
BAND 1	121170215044	\$ 11.16	2,614	0.153%
BAND 1	120710012001	\$ 11.19	4,489	0.262%
BAND 1	120830019005	\$ 11.21	641	0.037%
BAND 1	120950148023	\$ 11.24	686	0.040%
BAND 1	120950148031	\$ 11.24	4,646	0.271%
BAND 1	120559616001	\$ 11.28	674	0.039%
BAND 1	120830020021	\$ 11.32	1,635	0.096%
BAND 1	120599604004	\$ 11.32	769	0.045%
BAND 1	120910220002	\$ 11.32	1,237	0.072%
BAND 1	120910215003	\$ 11.33	595	0.035%

FLORIDA	Census Block Group Number	Monthly Cost	Total CBG Lines Served	Percent of Total Lines
BAND 1	120910224002	\$ 11.38	1,022	0.060%
BAND 1	121170216073	\$ 11.38	1,551	0.091%
BAND 1	120970405021	\$ 11.38	759	0.044%
BAND 1	120690306013	\$ 11.40	1,770	0.103%
BAND 1	121010326003	\$ 11.41	342	0.020%
BAND 1	120710103031	\$ 11.42	830	0.048%
BAND 1	120950158013	\$ 11.43	469	0.027%
BAND 1	120910218002	\$ 11.45	2,576	0.151%
BAND 1	121170221044	\$ 11.48	1,565	0.091%
BAND 1	120639806002	\$ 11.49	920	0.054%
BAND 1	120830024011	\$ 11.55	152	0.009%
BAND 1	120710506003	\$ 11.55	1,941	0.113%
BAND 1	120730016012	\$ 11.58	1,522	0.089%
BAND 1	120910212003	\$ 11.59	803	0.047%
BAND 1	120730015002	\$ 11.61	634	0.037%
BAND 1	120950158012	\$ 11.64	640	0.037%
BAND 1	120179802001	\$ 11.68	696	0.041%
BAND 1	120830018001	\$ 11.69	613	0.036%
BAND 1	121170222031	\$ 11.71	1,049	0.061%
BAND 1	120730013002	\$ 11.75	44	0.003%
BAND 1	120639806001	\$ 11.77	523	0.031%
BAND 1	120950174002	\$ 11.78	755	0.044%
BAND 1	120910215005	\$ 11.80	812	0.047%
BAND 1	120950160011	\$ 11.82	611	0.036%
BAND 1	120950176002	\$ 11.83	1,034	0.060%
BAND 1	120730020025	\$ 11.83	1,256	0.073%
BAND 1	120710106023	\$ 11.84	793	0.046%
BAND 1	120950149023	\$ 11.84	683	0.040%
BAND 1	120179809003	\$ 11.88	1,109	0.065%
BAND 1	120730008002	\$ 11.94	622	0.036%
BAND 1	120710601007	\$ 11.96	512	0.030%
BAND 1	120710007004	\$ 11.98	555	0.032%

SUMMARY	Percent of Total:	14.1%
BAND 1	Weighted Average Cost:	\$ 8.87

BAND 2	120179810005	\$ 12.00	677	0.040%
BAND 2	120910222001	\$ 12.08	1,022	0.060%
BAND 2	120950154021	\$ 12.09	1,630	0.095%
BAND 2	120950177003	\$ 12.11	276	0.016%
BAND 2	120730007001	\$ 12.17	898	0.052%
BAND 2	120910220004	\$ 12.17	1,628	0.095%
BAND 2	121270908025	\$ 12.19	284	0.017%
BAND 2	120730022046	\$ 12.23	377	0.022%
BAND 2	120690302026	\$ 12.25	481	0.028%
BAND 2	120559603004	\$ 12.26	542	0.032%
BAND 2	120179801007	\$ 12.34	362	0.021%
BAND 2	120279802004	\$ 12.35	658	0.038%

FLORIDA	Census Block Group Number	Monthly Cost	Total CBG Lines Served	Percent of Total Lines
BAND 2	121170219024	\$ 12.41	1,532	0.090%
BAND 2	120519601005	\$ 12.41	1,213	0.071%
BAND 2	120950175023	\$ 12.46	1,824	0.107%
BAND 2	120710011003	\$ 12.48	771	0.045%
BAND 2	120710004004	\$ 12.48	578	0.034%
BAND 2	120970405012	\$ 12.50	758	0.044%
BAND 2	120910212002	\$ 12.51	715	0.042%
BAND 2	120179809005	\$ 12.54	734	0.043%
BAND 2	120210004005	\$ 12.57	290	0.017%
BAND 2	120950161003	\$ 12.59	1,169	0.068%
BAND 2	120710010006	\$ 12.66	482	0.028%
BAND 2	120970405011	\$ 12.70	760	0.044%
BAND 2	120179809006	\$ 12.71	336	0.020%
BAND 2	120730019003	\$ 12.74	1,000	0.058%
BAND 2	120730020015	\$ 12.75	947	0.055%
BAND 2	120710601004	\$ 12.77	967	0.056%
BAND 2	121170221011	\$ 12.81	385	0.022%
BAND 2	120710403064	\$ 12.84	193	0.011%
BAND 2	120150207001	\$ 12.86	2,176	0.127%
BAND 2	121170216072	\$ 12.87	5,889	0.344%
BAND 2	120730015001	\$ 12.87	831	0.049%
BAND 2	121050160003	\$ 12.87	240	0.014%
BAND 2	120910215002	\$ 12.88	742	0.043%
BAND 2	120710105027	\$ 12.88	254	0.015%
BAND 2	120970403011	\$ 12.91	624	0.036%
BAND 2	120210101007	\$ 12.93	1,333	0.078%
BAND 2	120710005021	\$ 13.01	518	0.030%
BAND 2	120730003002	\$ 13.01	815	0.048%
BAND 2	120830016001	\$ 13.06	3,524	0.206%
BAND 2	120519601003	\$ 13.08	2,281	0.133%
BAND 2	120830021004	\$ 13.11	689	0.040%
BAND 2	120910207001	\$ 13.11	1,067	0.062%
BAND 2	120150207002	\$ 13.11	1,787	0.104%
BAND 2	120950175021	\$ 13.12	1,489	0.087%
BAND 2	120730006002	\$ 13.12	499	0.029%
BAND 2	120690305013	\$ 13.16	789	0.046%
BAND 2	121170218022	\$ 13.18	1,067	0.062%
BAND 2	120690313024	\$ 13.18	1,162	0.068%
BAND 2	120730022012	\$ 13.20	1,441	0.084%
BAND 2	120710006002	\$ 13.26	638	0.037%
BAND 2	120730017002	\$ 13.30	1,908	0.111%
BAND 2	120950155021	\$ 13.30	358	0.021%
BAND 2	120830017003	\$ 13.30	559	0.033%
BAND 2	120179801008	\$ 13.41	310	0.018%
BAND 2	120730011021	\$ 13.41	766	0.045%
BAND 2	120559611002	\$ 13.43	402	0.024%
BAND 2	120690308014	\$ 13.45	581	0.034%
BAND 2	120710015001	\$ 13.46	2,200	0.129%
BAND 2	120730009012	\$ 13.48	2,164	0.126%

FLORIDA	Census Block Group Number	Monthly Cost	Total CBG Lines Served	Percent of Total Lines
BAND 2	120710003024	\$ 13.52	651	0.038%
BAND 2	121170214012	\$ 13.53	1,912	0.112%
BAND 2	120730009023	\$ 13.53	749	0.044%
BAND 2	120710007003	\$ 13.55	678	0.040%
BAND 2	120950177002	\$ 13.58	353	0.021%
BAND 2	120179802002	\$ 13.58	524	0.031%
BAND 2	121170221041	\$ 13.59	873	0.051%
BAND 2	121170216081	\$ 13.64	4,986	0.291%
BAND 2	120179802003	\$ 13.67	518	0.030%
BAND 2	120279803004	\$ 13.69	1,412	0.083%
BAND 2	120730020014	\$ 13.71	1,149	0.067%
BAND 2	120730010011	\$ 13.72	675	0.039%
BAND 2	120970403022	\$ 13.74	1,161	0.068%
BAND 2	120279802003	\$ 13.80	571	0.033%
BAND 2	120910221001	\$ 13.80	419	0.025%
BAND 2	120690302021	\$ 13.80	995	0.058%
BAND 2	120690306021	\$ 13.81	565	0.033%
BAND 2	120950155022	\$ 13.82	251	0.015%
BAND 2	121170216064	\$ 13.83	1,696	0.099%
BAND 2	120710206003	\$ 13.88	406	0.024%
BAND 2	120730008003	\$ 13.94	1,032	0.060%
BAND 2	120730003005	\$ 13.96	1,846	0.108%
BAND 2	120179802004	\$ 13.96	545	0.032%
BAND 2	120710203004	\$ 13.98	831	0.049%
BAND 2	120210002002	\$ 13.98	1,094	0.064%
BAND 2	120970405025	\$ 13.98	1,033	0.060%
BAND 2	120910212005	\$ 14.00	271	0.016%
BAND 2	120950164012	\$ 14.00	4,108	0.240%
BAND 2	120730004002	\$ 14.02	727	0.042%
BAND 2	120690306023	\$ 14.03	658	0.038%
BAND 2	120710206004	\$ 14.06	497	0.029%
BAND 2	120910221003	\$ 14.09	1,118	0.065%
BAND 2	120690313026	\$ 14.14	954	0.056%
BAND 2	120970405022	\$ 14.15	437	0.026%
BAND 2	120910229003	\$ 14.22	3,177	0.186%
BAND 2	120150206001	\$ 14.23	2,847	0.166%
BAND 2	120950163021	\$ 14.25	2,105	0.123%
BAND 2	121270908022	\$ 14.25	659	0.039%
BAND 2	121199902002	\$ 14.26	807	0.047%
BAND 2	120730017005	\$ 14.27	507	0.030%
BAND 2	120910233003	\$ 14.27	1,888	0.110%
BAND 2	120710011005	\$ 14.30	1,242	0.073%
BAND 2	120559611001	\$ 14.34	577	0.034%
BAND 2	120910223001	\$ 14.35	605	0.035%
BAND 2	120830020013	\$ 14.36	740	0.043%
BAND 2	121010326001	\$ 14.37	1,311	0.077%
BAND 2	120710203003	\$ 14.38	1,024	0.060%
BAND 2	121170222034	\$ 14.39	595	0.035%
BAND 2	120690307011	\$ 14.39	400	0.023%

FLORIDA	Census Block Group Number	Monthly Cost	Total CBG Lines Served	Percent of Total Lines
BAND 2	120910205003	\$ 14.42	411	0.024%
BAND 2	120950176001	\$ 14.43	1,205	0.070%
BAND 2	120559609003	\$ 14.45	970	0.057%
BAND 2	120210003011	\$ 14.47	2,425	0.142%
BAND 2	120730002002	\$ 14.52	715	0.042%
BAND 2	121170216052	\$ 14.53	867	0.051%
BAND 2	120830021001	\$ 14.54	805	0.047%
BAND 2	120950175022	\$ 14.56	2,821	0.165%
BAND 2	120710017025	\$ 14.59	418	0.024%
BAND 2	121010326002	\$ 14.60	751	0.044%
BAND 2	120210112033	\$ 14.61	786	0.046%
BAND 2	121050160002	\$ 14.63	691	0.040%
BAND 2	120710010001	\$ 14.68	544	0.032%
BAND 2	120910205002	\$ 14.69	494	0.029%
BAND 2	120639805002	\$ 14.69	591	0.035%
BAND 2	120950176003	\$ 14.70	687	0.040%
BAND 2	120710106021	\$ 14.71	557	0.033%
BAND 2	120710104035	\$ 14.80	727	0.042%
BAND 2	120690308013	\$ 14.82	598	0.035%
BAND 2	120950128004	\$ 14.82	478	0.028%
BAND 2	120830018002	\$ 14.82	519	0.030%
BAND 2	120710202001	\$ 14.84	568	0.033%
BAND 2	120559602004	\$ 14.87	713	0.042%
BAND 2	120690309114	\$ 14.90	857	0.050%
BAND 2	120710015005	\$ 14.90	1,537	0.090%
BAND 2	120710103032	\$ 14.90	793	0.046%
BAND 2	120210101006	\$ 14.93	1,439	0.084%
BAND 2	121170219015	\$ 15.04	3,622	0.212%
BAND 2	120830022032	\$ 15.05	3,542	0.207%
BAND 2	120950156012	\$ 15.10	882	0.052%
BAND 2	120279803002	\$ 15.11	535	0.031%
BAND 2	120710003013	\$ 15.11	909	0.053%
BAND 2	120519602002	\$ 15.11	291	0.017%
BAND 2	121270910036	\$ 15.12	492	0.029%
BAND 2	120519604004	\$ 15.13	663	0.039%
BAND 2	120950153002	\$ 15.15	2,161	0.126%
BAND 2	120970403015	\$ 15.16	584	0.034%
BAND 2	120970403025	\$ 15.18	392	0.023%
BAND 2	120690302011	\$ 15.23	465	0.027%
BAND 2	120910218003	\$ 15.26	3,281	0.192%
BAND 2	120710206001	\$ 15.31	564	0.033%
BAND 2	121170221043	\$ 15.36	606	0.035%
BAND 2	120690308012	\$ 15.37	485	0.028%
BAND 2	121170218021	\$ 15.39	3,493	0.204%
BAND 2	120950161002	\$ 15.44	467	0.027%
BAND 2	120730020012	\$ 15.44	985	0.058%
BAND 2	120730020023	\$ 15.45	984	0.058%
BAND 2	120710017022	\$ 15.47	977	0.057%
BAND 2	120910224003	\$ 15.48	648	0.038%

FLORIDA	Census Block Group Number	Monthly Cost	Total CBG Lines Served	Percent of Total Lines
BAND 2	120210002001	\$ 15.50	1,791	0.105%
BAND 2	120970405024	\$ 15.51	775	0.045%
BAND 2	120710004001	\$ 15.51	724	0.042%
BAND 2	120710017031	\$ 15.53	1,488	0.087%
BAND 2	120910224004	\$ 15.54	544	0.032%
BAND 2	120210001008	\$ 15.56	120	0.007%
BAND 2	120910225002	\$ 15.60	1,663	0.097%
BAND 2	120710011001	\$ 15.60	1,447	0.085%
BAND 2	120730014002	\$ 15.62	632	0.037%
BAND 2	120710208003	\$ 15.64	721	0.042%
BAND 2	120730014004	\$ 15.65	539	0.031%
BAND 2	120950164011	\$ 15.67	5,055	0.295%
BAND 2	120710103011	\$ 15.69	1,432	0.084%
BAND 2	120690313023	\$ 15.70	1,236	0.072%
BAND 2	120710205022	\$ 15.71	903	0.053%
BAND 2	121170220011	\$ 15.74	1,007	0.059%
BAND 2	120210101008	\$ 15.76	1,463	0.085%
BAND 2	120210102013	\$ 15.77	2,633	0.154%
BAND 2	120950173001	\$ 15.78	943	0.055%
BAND 2	120830014021	\$ 15.79	4,172	0.244%
BAND 2	120910220003	\$ 15.80	1,167	0.068%
BAND 2	120830023011	\$ 15.81	4,011	0.234%
BAND 2	120730003003	\$ 15.83	1,871	0.109%
BAND 2	120710008001	\$ 15.84	1,112	0.065%
BAND 2	120559611003	\$ 15.85	714	0.042%
BAND 2	120710901003	\$ 15.85	360	0.021%
BAND 2	120830012027	\$ 15.86	905	0.053%
BAND 2	120710108021	\$ 15.86	507	0.030%
BAND 2	120830020022	\$ 15.87	1,838	0.107%
BAND 2	120950153003	\$ 15.88	1,831	0.107%
BAND 2	120730020011	\$ 15.90	900	0.053%
BAND 2	120210106004	\$ 15.91	927	0.054%
BAND 2	120710105026	\$ 15.91	392	0.023%
BAND 2	120710016004	\$ 15.94	1,281	0.075%
BAND 2	121050160005	\$ 15.95	1,131	0.066%
BAND 2	121170218013	\$ 15.96	8,388	0.490%
BAND 2	120910224005	\$ 16.00	561	0.033%
BAND 2	120730017006	\$ 16.02	468	0.027%
BAND 2	120710003014	\$ 16.03	789	0.046%
BAND 2	120210106003	\$ 16.05	743	0.043%
BAND 2	120830022022	\$ 16.07	1,073	0.063%
BAND 2	120499704002	\$ 16.12	513	0.030%
BAND 2	120690302013	\$ 16.12	2,346	0.137%
BAND 2	120710506005	\$ 16.13	545	0.032%
BAND 2	120950152022	\$ 16.14	932	0.054%
BAND 2	120730022045	\$ 16.15	713	0.042%
BAND 2	120730021007	\$ 16.20	1,314	0.077%
BAND 2	120730024045	\$ 16.20	1,155	0.067%
BAND 2	120279803003	\$ 16.27	875	0.051%

FLORIDA	Census Block Group Number	Monthly Cost	Total CBG Lines Served	Percent of Total Lines
BAND 2	120210109007	\$ 16.30	629	0.037%
BAND 2	120950151011	\$ 16.31	3,675	0.215%
BAND 2	121170215032	\$ 16.31	1,233	0.072%
BAND 2	120439502004	\$ 16.36	397	0.023%
BAND 2	120830022021	\$ 16.42	920	0.054%
BAND 2	121170215023	\$ 16.43	704	0.041%
BAND 2	120970403012	\$ 16.44	1,568	0.092%
BAND 2	120690306014	\$ 16.44	723	0.042%
BAND 2	120210006001	\$ 16.44	212	0.012%
BAND 2	120559603003	\$ 16.45	466	0.027%
BAND 2	120150203003	\$ 16.47	2,533	0.148%
BAND 2	120950163011	\$ 16.48	3,294	0.192%
BAND 2	121170220023	\$ 16.48	2,730	0.160%
BAND 2	120910223002	\$ 16.48	313	0.018%
BAND 2	120730017004	\$ 16.50	1,339	0.078%
BAND 2	120950147005	\$ 16.52	3,259	0.190%
BAND 2	120210003012	\$ 16.53	1,451	0.085%
BAND 2	120710108022	\$ 16.60	1,491	0.087%
BAND 2	120559613001	\$ 16.62	2,047	0.120%
BAND 2	121319502004	\$ 16.66	366	0.021%
BAND 2	120710015004	\$ 16.70	1,287	0.075%
BAND 2	120730017001	\$ 16.72	1,492	0.087%
BAND 2	121170220055	\$ 16.76	2,513	0.147%
BAND 2	120710106022	\$ 16.77	1,696	0.099%
BAND 2	120710010004	\$ 16.78	970	0.057%
BAND 2	120910206001	\$ 16.81	216	0.013%
BAND 2	120519601002	\$ 16.83	534	0.031%
BAND 2	120830011021	\$ 16.86	331	0.019%
BAND 2	120970403023	\$ 16.86	995	0.058%
BAND 2	120690304012	\$ 16.87	4,533	0.265%
BAND 2	121170217022	\$ 16.89	6,463	0.378%
BAND 2	120710010003	\$ 16.91	271	0.016%
BAND 2	120710005026	\$ 16.93	330	0.019%
BAND 2	120910218001	\$ 16.93	1,094	0.064%
BAND 2	120559608002	\$ 16.93	475	0.028%
BAND 2	120710601005	\$ 16.95	584	0.034%
BAND 2	120710003023	\$ 16.96	925	0.054%
BAND 2	120950174003	\$ 16.97	1,014	0.059%
BAND 2	120690305012	\$ 16.97	894	0.052%
BAND 2	120210001001	\$ 16.97	608	0.036%
BAND 2	120950177004	\$ 16.98	1,615	0.094%
BAND 2	121170220054	\$ 16.99	2,330	0.136%
BAND 2	120690302027	\$ 16.99	1,581	0.092%

SUMMARY	Percent of Total:	17.4%
BAND 2	Weighted Average Cost:	\$ 14.90

BAND 3	120690305021	\$ 17.01	646	0.038%
---------------	--------------	----------	-----	--------

FLORIDA	Census Block Group Number	Monthly Cost	Total CBG Lines Served	Percent of Total Lines
BAND 3	120950158011	\$ 17.02	291	0.017%
BAND 3	120210112032	\$ 17.02	270	0.016%
BAND 3	120210003013	\$ 17.09	1,237	0.072%
BAND 3	120970404001	\$ 17.09	3,275	0.191%
BAND 3	120730024049	\$ 17.10	2,455	0.143%
BAND 3	120730019005	\$ 17.10	480	0.028%
BAND 3	120910212001	\$ 17.14	1,059	0.062%
BAND 3	120710104023	\$ 17.15	372	0.022%
BAND 3	120830025021	\$ 17.18	3,357	0.196%
BAND 3	120950154012	\$ 17.19	1,989	0.116%
BAND 3	120710017033	\$ 17.20	749	0.044%
BAND 3	120910217002	\$ 17.22	699	0.041%
BAND 3	120730022041	\$ 17.22	1,049	0.061%
BAND 3	120730020013	\$ 17.22	332	0.019%
BAND 3	120830025015	\$ 17.25	2,839	0.166%
BAND 3	120730024048	\$ 17.26	970	0.057%
BAND 3	120210107001	\$ 17.28	520	0.030%
BAND 3	120710303003	\$ 17.28	1,023	0.060%
BAND 3	120950150001	\$ 17.29	3,460	0.202%
BAND 3	120499702002	\$ 17.31	346	0.020%
BAND 3	120950152021	\$ 17.36	2,702	0.158%
BAND 3	120519604003	\$ 17.36	932	0.054%
BAND 3	120210109008	\$ 17.36	2,471	0.144%
BAND 3	121170215021	\$ 17.37	2,572	0.150%
BAND 3	120710002003	\$ 17.38	282	0.016%
BAND 3	120690304022	\$ 17.42	1,098	0.064%
BAND 3	120710403044	\$ 17.45	593	0.035%
BAND 3	120730024046	\$ 17.45	878	0.051%
BAND 3	120970403013	\$ 17.45	550	0.032%
BAND 3	121270910028	\$ 17.47	1,052	0.061%
BAND 3	120710208008	\$ 17.49	234	0.014%
BAND 3	120690303018	\$ 17.49	2,402	0.140%
BAND 3	120690305011	\$ 17.51	1,495	0.087%
BAND 3	120690313025	\$ 17.51	605	0.035%
BAND 3	120710402037	\$ 17.52	1,481	0.087%
BAND 3	121050159002	\$ 17.52	78	0.005%
BAND 3	120279802005	\$ 17.52	617	0.036%
BAND 3	120950148013	\$ 17.52	3,148	0.184%
BAND 3	120950173002	\$ 17.58	1,152	0.067%
BAND 3	120210110004	\$ 17.60	140	0.008%
BAND 3	120710203001	\$ 17.61	521	0.030%
BAND 3	120519602004	\$ 17.61	600	0.035%
BAND 3	120179810006	\$ 17.63	536	0.031%
BAND 3	120690302023	\$ 17.64	566	0.033%
BAND 3	120710016003	\$ 17.67	1,976	0.115%
BAND 3	120910212004	\$ 17.73	611	0.036%
BAND 3	120950178022	\$ 17.77	1,943	0.114%
BAND 3	121170214043	\$ 17.79	1,773	0.104%
BAND 3	120710403061	\$ 17.79	928	0.054%

FLORIDA	Census Block Group Number	Monthly Cost	Total CBG Lines Served	Percent of Total Lines
BAND 3	120730012001	\$ 17.83	1,156	0.068%
BAND 3	120730025042	\$ 17.83	729	0.043%
BAND 3	120730009015	\$ 17.84	1,334	0.078%
BAND 3	120970405014	\$ 17.84	527	0.031%
BAND 3	120710206006	\$ 17.88	611	0.036%
BAND 3	120710205011	\$ 17.90	1,572	0.092%
BAND 3	120559606001	\$ 17.90	1,137	0.066%
BAND 3	120970402032	\$ 17.91	1,685	0.098%
BAND 3	120950177001	\$ 17.92	2,049	0.120%
BAND 3	120710019022	\$ 17.96	1,363	0.080%
BAND 3	120559607001	\$ 17.97	662	0.039%
BAND 3	120710403043	\$ 18.00	714	0.042%
BAND 3	120710014003	\$ 18.02	2,151	0.126%
BAND 3	121010324006	\$ 18.03	203	0.012%
BAND 3	120150202004	\$ 18.04	2,151	0.126%
BAND 3	120830014012	\$ 18.06	775	0.045%
BAND 3	120210104025	\$ 18.06	3,632	0.212%
BAND 3	120830022011	\$ 18.07	1,773	0.104%
BAND 3	120970405023	\$ 18.11	612	0.036%
BAND 3	120730021003	\$ 18.13	865	0.051%
BAND 3	120690308015	\$ 18.13	833	0.049%
BAND 3	120950157012	\$ 18.16	1,102	0.064%
BAND 3	121170217033	\$ 18.16	2,731	0.160%
BAND 3	120690302012	\$ 18.16	506	0.030%
BAND 3	120910215001	\$ 18.18	2,634	0.154%
BAND 3	120179806001	\$ 18.18	935	0.055%
BAND 3	121170222019	\$ 18.18	953	0.056%
BAND 3	120710105021	\$ 18.20	547	0.032%
BAND 3	120710103033	\$ 18.21	868	0.051%
BAND 3	120710601006	\$ 18.21	318	0.019%
BAND 3	120970403021	\$ 18.26	722	0.042%
BAND 3	120799903004	\$ 18.29	658	0.038%
BAND 3	120179814001	\$ 18.30	1,170	0.068%
BAND 3	120710205023	\$ 18.30	714	0.042%
BAND 3	120439502005	\$ 18.33	396	0.023%
BAND 3	120690309113	\$ 18.33	865	0.051%
BAND 3	120559604001	\$ 18.34	1,017	0.059%
BAND 3	120950149024	\$ 18.34	1,670	0.098%
BAND 3	120210104032	\$ 18.34	2,772	0.162%
BAND 3	120710017032	\$ 18.36	2,016	0.118%
BAND 3	121170216053	\$ 18.38	680	0.040%
BAND 3	120910225003	\$ 18.38	1,072	0.063%
BAND 3	120730021006	\$ 18.40	1,193	0.070%
BAND 3	120950152023	\$ 18.41	971	0.057%
BAND 3	121170216068	\$ 18.43	1,991	0.116%
BAND 3	120950153001	\$ 18.44	913	0.053%
BAND 3	120210110001	\$ 18.45	622	0.036%
BAND 3	120710005024	\$ 18.46	868	0.051%
BAND 3	120830023021	\$ 18.49	2,327	0.136%

FLORIDA	Census Block Group Number	Monthly Cost	Total CBG Lines Served	Percent of Total Lines
BAND 3	120950178032	\$ 18.49	1,935	0.113%
BAND 3	121270908026	\$ 18.51	1,622	0.095%
BAND 3	121270908014	\$ 18.53	899	0.053%
BAND 3	120910211001	\$ 18.54	997	0.058%
BAND 3	120710002001	\$ 18.54	405	0.024%
BAND 3	120710108012	\$ 18.55	326	0.019%
BAND 3	120710009002	\$ 18.58	802	0.047%
BAND 3	120710103014	\$ 18.59	2,030	0.119%
BAND 3	120939902005	\$ 18.59	294	0.017%
BAND 3	120970403016	\$ 18.60	1,180	0.069%
BAND 3	120950149021	\$ 18.61	1,355	0.079%
BAND 3	121170222013	\$ 18.61	3,332	0.195%
BAND 3	120559603002	\$ 18.62	755	0.044%
BAND 3	120830021003	\$ 18.64	1,110	0.065%
BAND 3	120690313022	\$ 18.65	634	0.037%
BAND 3	121170216017	\$ 18.67	7,331	0.428%
BAND 3	120910204002	\$ 18.68	1,162	0.068%
BAND 3	120710105025	\$ 18.71	273	0.016%
BAND 3	120950158021	\$ 18.74	981	0.057%
BAND 3	120950162001	\$ 18.77	3,300	0.193%
BAND 3	120950151013	\$ 18.79	1,904	0.111%
BAND 3	120730022044	\$ 18.82	852	0.050%
BAND 3	120710017026	\$ 18.82	798	0.047%
BAND 3	120210101005	\$ 18.86	1,031	0.060%
BAND 3	120710205012	\$ 18.86	939	0.055%
BAND 3	121270910037	\$ 18.88	1,175	0.069%
BAND 3	120830022031	\$ 18.88	371	0.022%
BAND 3	120710901002	\$ 18.89	158	0.009%
BAND 3	120710108011	\$ 18.89	413	0.024%
BAND 3	120210104037	\$ 18.90	1,268	0.074%
BAND 3	120150203001	\$ 18.93	2,913	0.170%
BAND 3	120519604002	\$ 18.96	524	0.031%
BAND 3	121170221034	\$ 18.97	5,380	0.314%
BAND 3	120710005023	\$ 18.97	409	0.024%
BAND 3	120730024032	\$ 18.97	747	0.044%
BAND 3	121170215013	\$ 18.98	1,489	0.087%
BAND 3	120210104033	\$ 18.98	1,528	0.089%
BAND 3	120939905002	\$ 19.00	1,067	0.062%
BAND 3	120950148032	\$ 19.00	8,007	0.468%
BAND 3	120910233002	\$ 19.04	950	0.056%
BAND 3	120730019001	\$ 19.05	1,093	0.064%
BAND 3	120559607004	\$ 19.06	1,134	0.066%
BAND 3	120710105023	\$ 19.06	581	0.034%
BAND 3	120710206005	\$ 19.08	338	0.020%
BAND 3	120970401011	\$ 19.09	3,706	0.217%
BAND 3	121170221012	\$ 19.10	2,531	0.148%
BAND 3	120950160022	\$ 19.11	487	0.028%
BAND 3	120730014001	\$ 19.11	1,053	0.062%
BAND 3	120710106014	\$ 19.11	750	0.044%

FLORIDA	Census Block Group Number	Monthly Cost	Total CBG Lines Served	Percent of Total Lines
BAND 3	120730022014	\$ 19.12	1,118	0.065%
BAND 3	120950164052	\$ 19.13	3,869	0.226%
BAND 3	120830014013	\$ 19.15	1,519	0.089%
BAND 3	120210107002	\$ 19.16	1,213	0.071%
BAND 3	120910210009	\$ 19.16	172	0.010%
BAND 3	120710105014	\$ 19.17	408	0.024%
BAND 3	120710008003	\$ 19.18	491	0.029%
BAND 3	121170215012	\$ 19.23	1,654	0.097%
BAND 3	120710501002	\$ 19.24	1,625	0.095%
BAND 3	120950155011	\$ 19.29	805	0.047%
BAND 3	120710006001	\$ 19.31	632	0.037%
BAND 3	120759706003	\$ 19.34	797	0.047%
BAND 3	120730022011	\$ 19.35	1,026	0.060%
BAND 3	120690309121	\$ 19.36	545	0.032%
BAND 3	120910206002	\$ 19.38	445	0.026%
BAND 3	120710403053	\$ 19.38	761	0.044%
BAND 3	120730019004	\$ 19.39	972	0.057%
BAND 3	121170214041	\$ 19.40	830	0.048%
BAND 3	120970402041	\$ 19.42	1,831	0.107%
BAND 3	120950155013	\$ 19.45	1,444	0.084%
BAND 3	120730009013	\$ 19.46	771	0.045%
BAND 3	120710506002	\$ 19.50	455	0.027%
BAND 3	120559608001	\$ 19.53	409	0.024%
BAND 3	120910228001	\$ 19.54	1,577	0.092%
BAND 3	120710401026	\$ 19.54	112	0.007%
BAND 3	120970402042	\$ 19.57	4,830	0.282%
BAND 3	120730022042	\$ 19.60	901	0.053%
BAND 3	120730019007	\$ 19.62	1,157	0.068%
BAND 3	120910210002	\$ 19.63	2,815	0.164%
BAND 3	121170214014	\$ 19.65	2,294	0.134%
BAND 3	120690301013	\$ 19.66	646	0.038%
BAND 3	120830014011	\$ 19.68	1,717	0.100%
BAND 3	121170217044	\$ 19.72	1,215	0.071%
BAND 3	120210103004	\$ 19.72	1,258	0.074%
BAND 3	120730003004	\$ 19.73	934	0.055%
BAND 3	120950170037	\$ 19.82	3,630	0.212%
BAND 3	121010325002	\$ 19.83	491	0.029%
BAND 3	120830007011	\$ 19.84	519	0.030%
BAND 3	120730009024	\$ 19.87	1,403	0.082%
BAND 3	120690309115	\$ 19.89	616	0.036%
BAND 3	120210104018	\$ 19.89	1,396	0.082%
BAND 3	121170222043	\$ 19.93	3,676	0.215%
BAND 3	120730020021	\$ 19.94	758	0.044%
BAND 3	120730009021	\$ 19.95	1,657	0.097%
BAND 3	120710005022	\$ 19.97	378	0.022%
BAND 3	120710504001	\$ 19.99	695	0.041%
BAND 3	120710103013	\$ 20.00	921	0.054%
BAND 3	120830015003	\$ 20.10	1,123	0.066%
BAND 3	121319506001	\$ 20.12	2,031	0.119%

FLORIDA	Census Block Group Number	Monthly Cost	Total CBG Lines Served	Percent of Total Lines
BAND 3	121170221042	\$ 20.14	1,100	0.064%
BAND 3	120710502004	\$ 20.14	1,088	0.064%
BAND 3	120179807004	\$ 20.15	921	0.054%
BAND 3	120690305014	\$ 20.20	996	0.058%
BAND 3	120710403062	\$ 20.24	850	0.050%
BAND 3	121170222032	\$ 20.28	2,788	0.163%
BAND 3	120730018003	\$ 20.28	597	0.035%
BAND 3	120210104019	\$ 20.34	1,347	0.079%
BAND 3	121270908023	\$ 20.36	1,540	0.090%
BAND 3	120210101003	\$ 20.40	2,924	0.171%
BAND 3	120730023012	\$ 20.43	1,146	0.067%
BAND 3	120710013001	\$ 20.45	873	0.051%
BAND 3	120710005025	\$ 20.47	64	0.004%
BAND 3	120210104022	\$ 20.48	1,123	0.066%
BAND 3	120830012021	\$ 20.54	2,183	0.128%
BAND 3	120690305023	\$ 20.55	696	0.041%
BAND 3	120210003025	\$ 20.56	1,052	0.061%
BAND 3	120710103043	\$ 20.65	1,923	0.112%
BAND 3	121170216056	\$ 20.67	3,239	0.189%
BAND 3	120559601003	\$ 20.67	885	0.052%
BAND 3	120210003024	\$ 20.70	907	0.053%
BAND 3	120830017001	\$ 20.73	957	0.056%
BAND 3	120910211003	\$ 20.76	805	0.047%
BAND 3	121050160006	\$ 20.77	697	0.041%
BAND 3	120730024043	\$ 20.77	738	0.043%
BAND 3	120730010012	\$ 20.78	579	0.034%
BAND 3	120730011011	\$ 20.81	667	0.039%
BAND 3	120910229002	\$ 20.81	1,466	0.086%
BAND 3	120710103012	\$ 20.81	1,039	0.061%
BAND 3	120950128005	\$ 20.81	423	0.025%
BAND 3	120710203002	\$ 20.82	662	0.039%
BAND 3	120710003012	\$ 20.86	405	0.024%
BAND 3	120950128001	\$ 20.89	769	0.045%
BAND 3	120710201002	\$ 20.90	1,816	0.106%
BAND 3	120710502001	\$ 20.90	866	0.051%
BAND 3	120710205021	\$ 20.90	487	0.028%
BAND 3	120179810003	\$ 20.91	1,407	0.082%
BAND 3	121170217045	\$ 20.92	1,136	0.066%
BAND 3	120210102024	\$ 21.02	1,609	0.094%
BAND 3	120690308021	\$ 21.03	1,026	0.060%
BAND 3	120519601004	\$ 21.05	767	0.045%
BAND 3	120690309123	\$ 21.06	1,303	0.076%
BAND 3	120710802026	\$ 21.09	535	0.031%
BAND 3	120150203004	\$ 21.10	3,119	0.182%
BAND 3	120950174001	\$ 21.12	1,759	0.103%
BAND 3	121170220044	\$ 21.17	1,127	0.066%
BAND 3	120279802002	\$ 21.17	921	0.054%
BAND 3	121170220021	\$ 21.19	135	0.008%
BAND 3	120710208007	\$ 21.19	229	0.013%

FLORIDA	Census Block Group Number	Monthly Cost	Total CBG Lines Served	Percent of Total Lines
BAND 3	120690301014	\$ 21.21	1,461	0.085%
BAND 3	120950175025	\$ 21.26	1,280	0.075%
BAND 3	121170215011	\$ 21.28	2,020	0.118%
BAND 3	120730022031	\$ 21.30	1,338	0.078%
BAND 3	121199902001	\$ 21.30	1,147	0.067%
BAND 3	120950178033	\$ 21.30	1,585	0.093%
BAND 3	120210005001	\$ 21.30	1,423	0.083%
BAND 3	120950160021	\$ 21.31	539	0.032%
BAND 3	121319505004	\$ 21.31	988	0.058%
BAND 3	120210106005	\$ 21.31	1,010	0.059%
BAND 3	120710105022	\$ 21.32	601	0.035%
BAND 3	120210105011	\$ 21.37	4,532	0.265%
BAND 3	120730014005	\$ 21.37	505	0.030%
BAND 3	121050160004	\$ 21.44	149	0.009%
BAND 3	120710105012	\$ 21.46	387	0.023%
BAND 3	120830015004	\$ 21.46	420	0.025%
BAND 3	120179803005	\$ 21.48	2,200	0.129%
BAND 3	120710403052	\$ 21.49	288	0.017%
BAND 3	120710006004	\$ 21.53	706	0.041%
BAND 3	120730021002	\$ 21.53	952	0.056%
BAND 3	120950179006	\$ 21.56	1,365	0.080%
BAND 3	120710017013	\$ 21.57	1,163	0.068%
BAND 3	120710107006	\$ 21.58	829	0.048%
BAND 3	120710019024	\$ 21.62	1,190	0.070%
BAND 3	120730021004	\$ 21.63	742	0.043%
BAND 3	120950128002	\$ 21.66	600	0.035%
BAND 3	120950125001	\$ 21.66	386	0.023%
BAND 3	120710104034	\$ 21.69	1,347	0.079%
BAND 3	120210110002	\$ 21.70	56	0.003%
BAND 3	120730021005	\$ 21.70	957	0.056%
BAND 3	120210103002	\$ 21.76	933	0.054%
BAND 3	120690308016	\$ 21.77	1,323	0.077%
BAND 3	121170221013	\$ 21.78	741	0.043%
BAND 3	120950163012	\$ 21.80	1,396	0.082%
BAND 3	120179808004	\$ 21.80	900	0.053%
BAND 3	120710403051	\$ 21.80	267	0.016%
BAND 3	120179802005	\$ 21.81	2,010	0.117%
BAND 3	120559603005	\$ 21.81	811	0.047%
BAND 3	120150209003	\$ 21.82	852	0.050%
BAND 3	121270910034	\$ 21.83	1,303	0.076%
BAND 3	120210109004	\$ 21.85	1,055	0.062%
BAND 3	120210105022	\$ 21.85	1,278	0.075%
BAND 3	121270910023	\$ 21.87	960	0.056%
BAND 3	120210004003	\$ 21.88	639	0.037%
BAND 3	120970402031	\$ 21.88	1,725	0.101%
BAND 3	121170222044	\$ 21.89	1,454	0.085%
BAND 3	120710108013	\$ 21.90	328	0.019%
BAND 3	121270910024	\$ 21.91	806	0.047%
BAND 3	120950178014	\$ 21.92	925	0.054%

FLORIDA	Census Block Group Number	Monthly Cost	Total CBG Lines Served	Percent of Total Lines
BAND 3	120710019025	\$ 21.92	1,311	0.077%
BAND 3	120210113004	\$ 21.96	580	0.034%
BAND 3	120830024012	\$ 21.96	2,333	0.136%
BAND 3	120710014001	\$ 21.96	518	0.030%
BAND 3	120210102035	\$ 21.97	3,639	0.213%
BAND 3	120830024021	\$ 21.98	1,939	0.113%
BAND 3	120950161001	\$ 21.99	1,249	0.073%

SUMMARY	Percent of Total:		22.0%
BAND 3	Weighted Average Cost:	\$	19.36

BAND 4	120710019023	\$ 22.04	1,111	0.065%
BAND 4	120210106007	\$ 22.05	3,310	0.193%
BAND 4	120210105023	\$ 22.05	1,069	0.062%
BAND 4	121270910035	\$ 22.07	968	0.057%
BAND 4	120710802023	\$ 22.09	311	0.018%
BAND 4	120150206002	\$ 22.11	2,448	0.143%
BAND 4	120910211007	\$ 22.14	905	0.053%
BAND 4	120830012026	\$ 22.18	711	0.042%
BAND 4	120730018005	\$ 22.19	1,089	0.064%
BAND 4	120710105013	\$ 22.20	199	0.012%
BAND 4	120210104034	\$ 22.24	2,267	0.132%
BAND 4	120179811002	\$ 22.26	628	0.037%
BAND 4	120730026015	\$ 22.26	1,187	0.069%
BAND 4	120710601002	\$ 22.27	651	0.038%
BAND 4	120730011013	\$ 22.27	349	0.020%
BAND 4	120150209001	\$ 22.30	981	0.057%
BAND 4	120690303015	\$ 22.31	814	0.048%
BAND 4	120690305022	\$ 22.34	1,199	0.070%
BAND 4	120690304021	\$ 22.35	644	0.038%
BAND 4	120950164051	\$ 22.35	1,797	0.105%
BAND 4	120559611004	\$ 22.35	1,012	0.059%
BAND 4	120710103022	\$ 22.36	864	0.050%
BAND 4	120710403054	\$ 22.36	317	0.019%
BAND 4	120710802011	\$ 22.36	640	0.037%
BAND 4	120150304003	\$ 22.37	1,394	0.081%
BAND 4	120970405032	\$ 22.38	7,410	0.433%
BAND 4	120690303013	\$ 22.40	1,355	0.079%
BAND 4	120730010013	\$ 22.40	623	0.036%
BAND 4	120730016022	\$ 22.41	469	0.027%
BAND 4	120710019013	\$ 22.42	1,213	0.071%
BAND 4	120150103001	\$ 22.42	1,148	0.067%
BAND 4	120830012029	\$ 22.45	1,138	0.067%
BAND 4	120710003011	\$ 22.48	980	0.057%
BAND 4	120710004002	\$ 22.49	672	0.039%
BAND 4	120950148024	\$ 22.49	1,041	0.061%
BAND 4	120690308017	\$ 22.52	578	0.034%
BAND 4	120730018002	\$ 22.53	1,340	0.078%

FLORIDA	Census Block Group Number	Monthly Cost	Total CBG Lines Served	Percent of Total Lines
BAND 4	120950178031	\$ 22.56	1,473	0.086%
BAND 4	120950150003	\$ 22.58	2,329	0.136%
BAND 4	120950162002	\$ 22.58	733	0.043%
BAND 4	120730024044	\$ 22.59	612	0.036%
BAND 4	120830013021	\$ 22.60	1,382	0.081%
BAND 4	120279803001	\$ 22.63	323	0.019%
BAND 4	120730011022	\$ 22.63	420	0.025%
BAND 4	120910219001	\$ 22.64	3,755	0.219%
BAND 4	120690309124	\$ 22.66	1,087	0.064%
BAND 4	120799903005	\$ 22.68	892	0.052%
BAND 4	120710018003	\$ 22.68	695	0.041%
BAND 4	120559605007	\$ 22.68	808	0.047%
BAND 4	121170216046	\$ 22.68	2,140	0.125%
BAND 4	120710017012	\$ 22.69	924	0.054%
BAND 4	120210110003	\$ 22.71	42	0.002%
BAND 4	120210101004	\$ 22.74	454	0.027%
BAND 4	120970402021	\$ 22.74	1,482	0.087%
BAND 4	120690302024	\$ 22.76	912	0.053%
BAND 4	120730017003	\$ 22.79	901	0.053%
BAND 4	120710009001	\$ 22.80	480	0.028%
BAND 4	120690309117	\$ 22.84	797	0.047%
BAND 4	120759706002	\$ 22.86	849	0.050%
BAND 4	120950127011	\$ 22.88	1,180	0.069%
BAND 4	120690307021	\$ 22.89	532	0.031%
BAND 4	120950175024	\$ 22.92	383	0.022%
BAND 4	120710003022	\$ 22.92	854	0.050%
BAND 4	120910231001	\$ 22.93	3,285	0.192%
BAND 4	120910214009	\$ 22.94	2,911	0.170%
BAND 4	120690308022	\$ 22.96	886	0.052%
BAND 4	120730024041	\$ 22.97	1,681	0.098%
BAND 4	120710019014	\$ 22.99	1,082	0.063%
BAND 4	120970403024	\$ 23.00	985	0.058%
BAND 4	120710019012	\$ 23.03	2,048	0.120%
BAND 4	120950157022	\$ 23.04	433	0.025%
BAND 4	120830012028	\$ 23.06	1,248	0.073%
BAND 4	120710015006	\$ 23.08	1,564	0.091%
BAND 4	120730025032	\$ 23.09	1,060	0.062%
BAND 4	121270908015	\$ 23.14	498	0.029%
BAND 4	121170217039	\$ 23.16	2,325	0.136%
BAND 4	120710802013	\$ 23.18	545	0.032%
BAND 4	120150209002	\$ 23.18	1,675	0.098%
BAND 4	120559613004	\$ 23.19	525	0.031%
BAND 4	120730018004	\$ 23.19	599	0.035%
BAND 4	120730018001	\$ 23.19	434	0.025%
BAND 4	120950151012	\$ 23.20	1,169	0.068%
BAND 4	121270908012	\$ 23.22	1,750	0.102%
BAND 4	120910233001	\$ 23.25	4,645	0.271%
BAND 4	120730024042	\$ 23.25	1,115	0.065%
BAND 4	120710107004	\$ 23.29	1,384	0.081%

FLORIDA	Census Block Group Number	Monthly Cost	Total CBG Lines Served	Percent of Total Lines
BAND 4	120939906002	\$ 23.33	719	0.042%
BAND 4	121319503003	\$ 23.34	699	0.041%
BAND 4	120730009011	\$ 23.40	838	0.049%
BAND 4	121170215046	\$ 23.43	543	0.032%
BAND 4	120499702003	\$ 23.44	682	0.040%
BAND 4	120150304002	\$ 23.45	843	0.049%
BAND 4	120710504004	\$ 23.48	414	0.024%
BAND 4	120910227002	\$ 23.50	1,430	0.084%
BAND 4	120690302022	\$ 23.51	1,170	0.068%
BAND 4	120710401042	\$ 23.51	1,534	0.090%
BAND 4	120730015004	\$ 23.51	481	0.028%
BAND 4	120950158022	\$ 23.55	657	0.038%
BAND 4	120830011023	\$ 23.56	874	0.051%
BAND 4	120210004001	\$ 23.56	2,573	0.150%
BAND 4	120150208001	\$ 23.58	1,500	0.088%
BAND 4	120710504002	\$ 23.60	617	0.036%
BAND 4	120730025031	\$ 23.61	832	0.049%
BAND 4	121270910033	\$ 23.61	663	0.039%
BAND 4	120710102023	\$ 23.65	1,036	0.061%
BAND 4	120910209001	\$ 23.66	523	0.031%
BAND 4	120710402038	\$ 23.67	693	0.040%
BAND 4	120150302001	\$ 23.68	1,193	0.070%
BAND 4	120210006002	\$ 23.69	914	0.053%
BAND 4	120830026022	\$ 23.72	601	0.035%
BAND 4	120690302014	\$ 23.73	909	0.053%
BAND 4	120730024031	\$ 23.75	859	0.050%
BAND 4	120710502005	\$ 23.75	1,269	0.074%
BAND 4	120910217001	\$ 23.75	1,103	0.064%
BAND 4	121270910012	\$ 23.77	785	0.046%
BAND 4	120730019006	\$ 23.85	372	0.022%
BAND 4	120730014003	\$ 23.86	539	0.032%
BAND 4	120710016006	\$ 23.87	1,592	0.093%
BAND 4	120710006003	\$ 23.92	717	0.042%
BAND 4	120150103004	\$ 23.94	658	0.038%
BAND 4	120690306015	\$ 23.96	1,043	0.061%
BAND 4	120710106011	\$ 23.97	660	0.039%
BAND 4	120710005016	\$ 23.97	719	0.042%
BAND 4	120710016002	\$ 23.98	578	0.034%
BAND 4	120690307012	\$ 24.00	1,006	0.059%
BAND 4	120910204001	\$ 24.01	565	0.033%
BAND 4	120830013022	\$ 24.02	1,181	0.069%
BAND 4	120710103021	\$ 24.04	642	0.038%
BAND 4	120950156021	\$ 24.06	573	0.034%
BAND 4	120970404002	\$ 24.07	1,463	0.086%
BAND 4	120910210001	\$ 24.07	1,201	0.070%
BAND 4	120690313027	\$ 24.09	955	0.056%
BAND 4	120559612001	\$ 24.09	826	0.048%
BAND 4	120559616007	\$ 24.13	1,368	0.080%
BAND 4	120710104022	\$ 24.15	537	0.031%

FLORIDA	Census Block Group Number	Monthly Cost	Total CBG Lines Served	Percent of Total Lines
BAND 4	120210102012	\$ 24.17	1,868	0.109%
BAND 4	120710003021	\$ 24.18	549	0.032%
BAND 4	120730024047	\$ 24.18	1,211	0.071%
BAND 4	121270910025	\$ 24.20	1,000	0.058%
BAND 4	120710802027	\$ 24.21	395	0.023%
BAND 4	120950179007	\$ 24.22	516	0.030%
BAND 4	120210108004	\$ 24.23	828	0.048%
BAND 4	120910227001	\$ 24.25	1,000	0.058%
BAND 4	120710106013	\$ 24.29	666	0.039%
BAND 4	120499703004	\$ 24.29	228	0.013%
BAND 4	120710107005	\$ 24.32	1,055	0.062%
BAND 4	120559615004	\$ 24.38	456	0.027%
BAND 4	120690304014	\$ 24.38	1,065	0.062%
BAND 4	120710501004	\$ 24.38	906	0.053%
BAND 4	120950148021	\$ 24.40	1,519	0.089%
BAND 4	120690308023	\$ 24.41	1,278	0.075%
BAND 4	120939902004	\$ 24.41	1,601	0.094%
BAND 4	120710014006	\$ 24.42	599	0.035%
BAND 4	120179817001	\$ 24.43	889	0.052%
BAND 4	120559613003	\$ 24.44	644	0.038%
BAND 4	120070001003	\$ 24.46	1,030	0.060%
BAND 4	120950173003	\$ 24.48	1,585	0.093%
BAND 4	120639806005	\$ 24.51	1,263	0.074%
BAND 4	120710107007	\$ 24.53	536	0.031%
BAND 4	120830008001	\$ 24.54	1,378	0.081%
BAND 4	121010324004	\$ 24.56	535	0.031%
BAND 4	120179806002	\$ 24.58	993	0.058%
BAND 4	120179801004	\$ 24.59	669	0.039%
BAND 4	120710505002	\$ 24.59	838	0.049%
BAND 4	120690311004	\$ 24.65	775	0.045%
BAND 4	120970405013	\$ 24.65	938	0.055%
BAND 4	120150205001	\$ 24.65	1,233	0.072%
BAND 4	120210106001	\$ 24.68	1,402	0.082%
BAND 4	120950157021	\$ 24.70	719	0.042%
BAND 4	120730010021	\$ 24.70	854	0.050%
BAND 4	120950156022	\$ 24.71	752	0.044%
BAND 4	120710207002	\$ 24.72	1,100	0.064%
BAND 4	120910205005	\$ 24.75	1,317	0.077%
BAND 4	120710205024	\$ 24.76	998	0.058%
BAND 4	120150204006	\$ 24.80	879	0.051%
BAND 4	120179808003	\$ 24.81	661	0.039%
BAND 4	120150201003	\$ 24.82	2,128	0.124%
BAND 4	120710506001	\$ 24.82	464	0.027%
BAND 4	120150302002	\$ 24.82	1,185	0.069%
BAND 4	120910209002	\$ 24.85	1,276	0.075%
BAND 4	120499704001	\$ 24.87	305	0.018%
BAND 4	120210113003	\$ 24.88	677	0.040%
BAND 4	120710302001	\$ 24.90	463	0.027%
BAND 4	120950178021	\$ 24.92	1,537	0.090%

FLORIDA	Census Block Group Number	Monthly Cost	Total CBG Lines Served	Percent of Total Lines
BAND 4	120730022043	\$ 24.94	468	0.027%
BAND 4	120970405031	\$ 24.98	1,040	0.061%
BAND 4	120730016021	\$ 24.99	729	0.043%
BAND 4	120730023014	\$ 25.00	676	0.039%
BAND 4	120150202002	\$ 25.00	1,323	0.077%
BAND 4	120710005013	\$ 25.00	761	0.044%
BAND 4	120830011022	\$ 25.03	357	0.021%
BAND 4	120970401021	\$ 25.05	441	0.026%
BAND 4	120730021001	\$ 25.07	956	0.056%
BAND 4	120179815003	\$ 25.09	1,260	0.074%
BAND 4	120690304013	\$ 25.11	1,090	0.064%
BAND 4	120710401021	\$ 25.12	655	0.038%
BAND 4	120710017011	\$ 25.13	715	0.042%
BAND 4	120710005015	\$ 25.19	1,366	0.080%
BAND 4	120690303016	\$ 25.21	468	0.027%
BAND 4	120730022032	\$ 25.21	934	0.055%
BAND 4	120690304024	\$ 25.22	913	0.053%
BAND 4	120150104003	\$ 25.27	618	0.036%
BAND 4	120710201003	\$ 25.27	581	0.034%
BAND 4	120939905001	\$ 25.28	813	0.048%
BAND 4	120830005001	\$ 25.28	683	0.040%
BAND 4	120710107001	\$ 25.32	597	0.035%
BAND 4	120730025044	\$ 25.33	665	0.039%
BAND 4	120830011012	\$ 25.38	1,270	0.074%
BAND 4	120970402023	\$ 25.39	1,064	0.062%
BAND 4	120210110006	\$ 25.43	144	0.008%
BAND 4	120730027001	\$ 25.43	605	0.035%
BAND 4	120519602003	\$ 25.44	646	0.038%
BAND 4	120730026024	\$ 25.45	843	0.049%
BAND 4	120950179001	\$ 25.46	554	0.032%
BAND 4	120710019021	\$ 25.47	1,394	0.081%
BAND 4	120950179002	\$ 25.48	546	0.032%
BAND 4	121199902003	\$ 25.49	307	0.018%
BAND 4	120910211004	\$ 25.50	383	0.022%
BAND 4	120210108003	\$ 25.52	694	0.041%
BAND 4	120950174004	\$ 25.54	718	0.042%
BAND 4	120710204001	\$ 25.54	391	0.023%
BAND 4	120730027007	\$ 25.56	569	0.033%
BAND 4	120179811001	\$ 25.63	851	0.050%
BAND 4	120150103005	\$ 25.63	597	0.035%
BAND 4	120939903001	\$ 25.63	525	0.031%
BAND 4	120710504003	\$ 25.69	651	0.038%
BAND 4	120950156011	\$ 25.69	629	0.037%
BAND 4	120950164053	\$ 25.70	1,813	0.106%
BAND 4	120710104018	\$ 25.71	422	0.025%
BAND 4	120210106006	\$ 25.72	1,030	0.060%
BAND 4	121270908021	\$ 25.73	697	0.041%
BAND 4	120710602005	\$ 25.73	549	0.032%
BAND 4	120830013012	\$ 25.75	1,218	0.071%

FLORIDA	Census Block Group Number	Monthly Cost	Total CBG Lines Served	Percent of Total Lines
BAND 4	120710017021	\$ 25.82	924	0.054%
BAND 4	120970401012	\$ 25.82	4,856	0.284%
BAND 4	120950175011	\$ 25.83	982	0.057%
BAND 4	121170214039	\$ 25.84	1,856	0.108%
BAND 4	120150103003	\$ 25.84	994	0.058%
BAND 4	120710104032	\$ 25.86	664	0.039%
BAND 4	120939904003	\$ 25.87	301	0.018%
BAND 4	120710207001	\$ 25.87	527	0.031%
BAND 4	120950162003	\$ 25.88	533	0.031%
BAND 4	120970401022	\$ 25.89	570	0.033%
BAND 4	121010327001	\$ 25.90	598	0.035%
BAND 4	120559617004	\$ 25.93	337	0.020%
BAND 4	120970402022	\$ 25.93	778	0.045%
BAND 4	120710702003	\$ 25.94	535	0.031%
BAND 4	120830007021	\$ 25.96	792	0.046%
BAND 4	120710104033	\$ 25.97	1,479	0.086%
BAND 4	120179807005	\$ 25.99	569	0.033%
BAND 4	120210102011	\$ 26.01	827	0.048%
BAND 4	120830023022	\$ 26.02	958	0.056%
BAND 4	120559609002	\$ 26.04	500	0.029%
BAND 4	120730016023	\$ 26.08	465	0.027%
BAND 4	120710104021	\$ 26.09	633	0.037%
BAND 4	120179809004	\$ 26.11	434	0.025%
BAND 4	120950149022	\$ 26.12	361	0.021%
BAND 4	120910216001	\$ 26.14	638	0.037%
BAND 4	120710103051	\$ 26.15	1,446	0.084%
BAND 4	120830009022	\$ 26.16	988	0.058%
BAND 4	120690303023	\$ 26.19	1,109	0.065%
BAND 4	120710103041	\$ 26.29	1,156	0.068%
BAND 4	121170215022	\$ 26.30	289	0.017%
BAND 4	120950179003	\$ 26.32	1,625	0.095%
BAND 4	120970402033	\$ 26.39	1,079	0.063%
BAND 4	120559606002	\$ 26.42	412	0.024%
BAND 4	120950125002	\$ 26.44	1,475	0.086%
BAND 4	120530001002	\$ 26.45	742	0.043%
BAND 4	120710108031	\$ 26.47	384	0.022%
BAND 4	120710015002	\$ 26.48	899	0.053%
BAND 4	120830009021	\$ 26.55	659	0.039%
BAND 4	120939905004	\$ 26.57	359	0.021%
BAND 4	120179815002	\$ 26.58	1,769	0.103%
BAND 4	121170214042	\$ 26.60	1,206	0.070%
BAND 4	120710104024	\$ 26.60	540	0.032%
BAND 4	120710015003	\$ 26.66	363	0.021%
BAND 4	120710502003	\$ 26.70	1,093	0.064%
BAND 4	120950150002	\$ 26.74	754	0.044%
BAND 4	120659801983	\$ 26.75	1,045	0.061%
BAND 4	120210101001	\$ 26.76	2,937	0.172%
BAND 4	120559604003	\$ 26.78	721	0.042%
BAND 4	120710014002	\$ 26.85	732	0.043%

FLORIDA	Census Block Group Number	Monthly Cost	Total CBG Lines Served	Percent of Total Lines
BAND 4	120710802021	\$ 26.85	294	0.017%
BAND 4	120150201004	\$ 26.92	957	0.056%
BAND 4	120150210003	\$ 26.92	805	0.047%
BAND 4	120150210001	\$ 26.94	1,937	0.113%
BAND 4	121010324003	\$ 26.94	422	0.025%
BAND 4	120730022013	\$ 26.95	734	0.043%
BAND 4	120950175012	\$ 26.99	728	0.043%

SUMMARY	Percent of Total:			16.65%
BAND 4	Weighted Average Cost:		\$	24.15

BAND 5	120710802012	\$ 27.01	858	0.050%
BAND 5	120710208004	\$ 27.03	437	0.026%
BAND 5	120179810004	\$ 27.04	710	0.042%
BAND 5	120210110005	\$ 27.04	1,215	0.071%
BAND 5	120939904005	\$ 27.05	695	0.041%
BAND 5	120710108025	\$ 27.06	438	0.026%
BAND 5	120519604005	\$ 27.08	750	0.044%
BAND 5	120559612002	\$ 27.08	420	0.025%
BAND 5	120710502002	\$ 27.15	1,447	0.085%
BAND 5	120950171011	\$ 27.19	1,910	0.112%
BAND 5	120070002005	\$ 27.20	836	0.049%
BAND 5	120910232001	\$ 27.21	1,626	0.095%
BAND 5	120559617003	\$ 27.23	583	0.034%
BAND 5	120150202003	\$ 27.30	2,162	0.126%
BAND 5	120210104041	\$ 27.45	517	0.030%
BAND 5	120710009003	\$ 27.46	574	0.034%
BAND 5	120710012002	\$ 27.48	1,757	0.103%
BAND 5	120690309122	\$ 27.51	457	0.027%
BAND 5	120210108001	\$ 27.55	2,073	0.121%
BAND 5	120070001005	\$ 27.57	662	0.039%
BAND 5	120559601004	\$ 27.60	992	0.058%
BAND 5	120710018005	\$ 27.60	756	0.044%
BAND 5	120179807003	\$ 27.63	531	0.031%
BAND 5	120559603001	\$ 27.63	384	0.022%
BAND 5	120690303017	\$ 27.68	414	0.024%
BAND 5	120730013001	\$ 27.71	65	0.004%
BAND 5	120559607003	\$ 27.73	419	0.025%
BAND 5	121010326006	\$ 27.73	889	0.052%
BAND 5	120210112034	\$ 27.74	1,347	0.079%
BAND 5	120710017023	\$ 27.74	1,148	0.067%
BAND 5	121270910038	\$ 27.79	461	0.027%
BAND 5	120150104002	\$ 27.81	1,642	0.096%
BAND 5	120830022012	\$ 27.82	659	0.039%
BAND 5	120730011012	\$ 27.83	513	0.030%
BAND 5	120710017024	\$ 27.83	760	0.044%
BAND 5	120710501006	\$ 27.84	661	0.039%
BAND 5	120830015002	\$ 27.84	339	0.020%

FLORIDA	Census Block Group Number	Monthly Cost	Total CBG Lines Served	Percent of Total Lines
BAND 5	120710013002	\$ 27.84	1,116	0.065%
BAND 5	120970401023	\$ 27.85	836	0.049%
BAND 5	120499703001	\$ 27.85	1,347	0.079%
BAND 5	120950157011	\$ 27.86	366	0.021%
BAND 5	120150102003	\$ 27.87	826	0.048%
BAND 5	120710401028	\$ 27.88	158	0.009%
BAND 5	120950172003	\$ 27.90	174	0.010%
BAND 5	120830012024	\$ 27.90	456	0.027%
BAND 5	120710104037	\$ 27.94	1,909	0.112%
BAND 5	120530001003	\$ 27.97	514	0.030%
BAND 5	120710106012	\$ 27.99	596	0.035%
BAND 5	120830015001	\$ 28.00	1,635	0.096%
BAND 5	120210107005	\$ 28.03	1,752	0.102%
BAND 5	120939903003	\$ 28.03	484	0.028%
BAND 5	120910205001	\$ 28.04	663	0.039%
BAND 5	120710403041	\$ 28.06	629	0.037%
BAND 5	120559615005	\$ 28.08	619	0.036%
BAND 5	120150104001	\$ 28.10	3,109	0.182%
BAND 5	120710104026	\$ 28.13	480	0.028%
BAND 5	120710802014	\$ 28.13	233	0.014%
BAND 5	120210111011	\$ 28.14	1,160	0.068%
BAND 5	120710208006	\$ 28.17	468	0.027%
BAND 5	120150204002	\$ 28.17	728	0.043%
BAND 5	120710103034	\$ 28.19	567	0.033%
BAND 5	120210103001	\$ 28.23	583	0.034%
BAND 5	120710103052	\$ 28.26	1,037	0.061%
BAND 5	120150210002	\$ 28.29	1,890	0.110%
BAND 5	120830007013	\$ 28.34	1,070	0.063%
BAND 5	120210113002	\$ 28.35	551	0.032%
BAND 5	121010325006	\$ 28.41	454	0.027%
BAND 5	120710402047	\$ 28.42	554	0.032%
BAND 5	120910211006	\$ 28.45	1,041	0.061%
BAND 5	120690303022	\$ 28.47	784	0.046%
BAND 5	120710401025	\$ 28.56	102	0.006%
BAND 5	120559614002	\$ 28.58	1,341	0.078%
BAND 5	120150103006	\$ 28.60	902	0.053%
BAND 5	120730025034	\$ 28.60	1,333	0.078%
BAND 5	120939906003	\$ 28.61	517	0.030%
BAND 5	120710802025	\$ 28.63	437	0.026%
BAND 5	120710108032	\$ 28.65	484	0.028%
BAND 5	120950148012	\$ 28.71	645	0.038%
BAND 5	120710302004	\$ 28.74	414	0.024%
BAND 5	120730019002	\$ 28.75	376	0.022%
BAND 5	120730023013	\$ 28.77	506	0.030%
BAND 5	120690309021	\$ 28.79	335	0.020%
BAND 5	121010325001	\$ 28.80	356	0.021%
BAND 5	120150201001	\$ 28.86	1,011	0.059%
BAND 5	120710102025	\$ 28.86	1,069	0.062%
BAND 5	120710004005	\$ 28.87	790	0.046%

FLORIDA	Census Block Group Number	Monthly Cost	Total CBG Lines Served	Percent of Total Lines
BAND 5	120950174005	\$ 28.88	401	0.023%
BAND 5	120710108014	\$ 28.91	488	0.029%
BAND 5	121010325003	\$ 28.94	511	0.030%
BAND 5	121270910013	\$ 28.95	683	0.040%
BAND 5	120179812002	\$ 28.97	563	0.033%
BAND 5	120710018002	\$ 29.00	722	0.042%
BAND 5	120210103003	\$ 29.02	333	0.019%
BAND 5	120710802015	\$ 29.02	545	0.032%
BAND 5	121010322002	\$ 29.03	662	0.039%
BAND 5	120730025033	\$ 29.04	466	0.027%
BAND 5	120730011023	\$ 29.04	587	0.034%
BAND 5	120150102002	\$ 29.05	1,736	0.101%
BAND 5	120939906004	\$ 29.08	592	0.035%
BAND 5	120830013011	\$ 29.10	941	0.055%
BAND 5	120970401025	\$ 29.12	1,844	0.108%
BAND 5	120150304001	\$ 29.12	682	0.040%
BAND 5	120710107003	\$ 29.13	517	0.030%
BAND 5	120910211008	\$ 29.14	895	0.052%
BAND 5	120179816001	\$ 29.17	667	0.039%
BAND 5	120710103023	\$ 29.22	634	0.037%
BAND 5	120179815001	\$ 29.23	1,167	0.068%
BAND 5	121270903023	\$ 29.23	1,500	0.088%
BAND 5	120710403063	\$ 29.27	833	0.049%
BAND 5	120710019011	\$ 29.28	755	0.044%
BAND 5	120710501001	\$ 29.42	524	0.031%
BAND 5	120710502006	\$ 29.45	1,008	0.059%
BAND 5	120710602002	\$ 29.45	657	0.038%
BAND 5	120730023015	\$ 29.46	331	0.019%
BAND 5	120279803007	\$ 29.49	917	0.054%
BAND 5	120710014005	\$ 29.56	612	0.036%
BAND 5	120210004004	\$ 29.58	389	0.023%
BAND 5	120950175014	\$ 29.59	554	0.032%
BAND 5	120179806003	\$ 29.61	1,684	0.098%
BAND 5	120690312002	\$ 29.61	1,050	0.061%
BAND 5	120710802024	\$ 29.68	300	0.018%
BAND 5	120559607002	\$ 29.70	448	0.026%
BAND 5	120970401027	\$ 29.71	433	0.025%
BAND 5	120710005012	\$ 29.72	565	0.033%
BAND 5	120939906005	\$ 29.75	1,441	0.084%
BAND 5	120710103042	\$ 29.79	668	0.039%
BAND 5	120150205002	\$ 29.87	630	0.037%
BAND 5	120830025018	\$ 29.91	311	0.018%
BAND 5	120690304011	\$ 29.91	788	0.046%
BAND 5	120710602003	\$ 29.94	173	0.010%
BAND 5	120519604001	\$ 29.95	732	0.043%
BAND 5	120559604005	\$ 29.98	380	0.022%
BAND 5	120910207002	\$ 30.00	1,641	0.096%
BAND 5	120710201001	\$ 30.01	954	0.056%
BAND 5	120519604007	\$ 30.03	943	0.055%

FLORIDA	Census Block Group Number	Monthly Cost	Total CBG Lines Served	Percent of Total Lines
BAND 5	120710016001	\$ 30.12	481	0.028%
BAND 5	120710102028	\$ 30.17	461	0.027%
BAND 5	120970405041	\$ 30.25	1,248	0.073%
BAND 5	120710104025	\$ 30.29	364	0.021%
BAND 5	120710302002	\$ 30.31	1,005	0.059%
BAND 5	120710104036	\$ 30.33	445	0.026%
BAND 5	120710108023	\$ 30.36	348	0.020%
BAND 5	120559616002	\$ 30.39	869	0.051%
BAND 5	120710303002	\$ 30.44	440	0.026%
BAND 5	120710004003	\$ 30.52	438	0.026%
BAND 5	120710505003	\$ 30.53	645	0.038%
BAND 5	121199906002	\$ 30.55	590	0.034%
BAND 5	120710103044	\$ 30.57	548	0.032%
BAND 5	120499704003	\$ 30.58	750	0.044%
BAND 5	120710506004	\$ 30.60	550	0.032%
BAND 5	120830009011	\$ 30.63	1,422	0.083%
BAND 5	120179812001	\$ 30.63	963	0.056%
BAND 5	120179801006	\$ 30.67	2,380	0.139%
BAND 5	120690311003	\$ 30.74	755	0.044%
BAND 5	120559604002	\$ 30.76	510	0.030%
BAND 5	120710108024	\$ 30.82	275	0.016%
BAND 5	120179801003	\$ 30.84	521	0.030%
BAND 5	121170214013	\$ 30.87	511	0.030%
BAND 5	120690302015	\$ 30.95	716	0.042%
BAND 5	120710302005	\$ 30.99	655	0.038%
BAND 5	121319502005	\$ 31.01	1,244	0.073%
BAND 5	120559617005	\$ 31.01	1,030	0.060%
BAND 5	120179812003	\$ 31.03	308	0.018%
BAND 5	120710403013	\$ 31.04	103	0.006%
BAND 5	120730025035	\$ 31.04	1,065	0.062%
BAND 5	121319503002	\$ 31.05	355	0.021%
BAND 5	120710702005	\$ 31.07	537	0.031%
BAND 5	120939905003	\$ 31.08	455	0.027%
BAND 5	120710602006	\$ 31.10	560	0.033%
BAND 5	120710018006	\$ 31.13	786	0.046%
BAND 5	120710204002	\$ 31.16	107	0.006%
BAND 5	120830012025	\$ 31.18	433	0.025%
BAND 5	120799903001	\$ 31.22	1,319	0.077%
BAND 5	120830008003	\$ 31.22	660	0.039%
BAND 5	120910211005	\$ 31.24	238	0.014%
BAND 5	120830026021	\$ 31.33	522	0.030%
BAND 5	120639806004	\$ 31.33	694	0.041%
BAND 5	120150301003	\$ 31.53	993	0.058%
BAND 5	120730023011	\$ 31.60	1,283	0.075%
BAND 5	120179814003	\$ 31.61	1,918	0.112%
BAND 5	120499703003	\$ 31.62	573	0.033%
BAND 5	121199902004	\$ 31.62	2,570	0.150%
BAND 5	120179817004	\$ 31.63	807	0.047%
BAND 5	120759706001	\$ 31.65	398	0.023%

FLORIDA	Census Block Group Number	Monthly Cost	Total CBG Lines Served	Percent of Total Lines
BAND 5	120559606003	\$ 31.65	2,964	0.173%
BAND 5	120730024024	\$ 31.66	2,037	0.119%
BAND 5	120710208002	\$ 31.71	381	0.022%
BAND 5	120179814002	\$ 31.73	165	0.010%
BAND 5	120559612003	\$ 31.76	996	0.058%
BAND 5	120830023012	\$ 31.81	373	0.022%
BAND 5	120690304025	\$ 31.82	1,152	0.067%
BAND 5	120710208005	\$ 31.86	543	0.032%
BAND 5	120950168016	\$ 31.91	3,680	0.215%
BAND 5	120830025011	\$ 31.98	469	0.027%
BAND 5	120150305002	\$ 31.99	2,111	0.123%

SUMMARY	Percent of Total:	9.35%
BAND 5	Weighted Average Cost:	\$ 29.31

BAND 6	120210102037	\$ 32.00	430	0.025%
BAND 6	120710018004	\$ 32.01	582	0.034%
BAND 6	120710204003	\$ 32.01	723	0.042%
BAND 6	120639804001	\$ 32.02	788	0.046%
BAND 6	120499703002	\$ 32.02	633	0.037%
BAND 6	120939904006	\$ 32.03	774	0.045%
BAND 6	120150302003	\$ 32.05	576	0.034%
BAND 6	120730018006	\$ 32.08	428	0.025%
BAND 6	120559604004	\$ 32.09	218	0.013%
BAND 6	120710402036	\$ 32.11	502	0.029%
BAND 6	120939902003	\$ 32.16	703	0.041%
BAND 6	120910204003	\$ 32.22	1,173	0.069%
BAND 6	120210108006	\$ 32.22	970	0.057%
BAND 6	120179817002	\$ 32.24	623	0.036%
BAND 6	120710108034	\$ 32.27	476	0.028%
BAND 6	120710005011	\$ 32.29	262	0.015%
BAND 6	120639807003	\$ 32.29	820	0.048%
BAND 6	120710505001	\$ 32.31	688	0.040%
BAND 6	120710503023	\$ 32.31	384	0.022%
BAND 6	120830025012	\$ 32.35	576	0.034%
BAND 6	120710301002	\$ 32.39	535	0.031%
BAND 6	120950179009	\$ 32.47	1,042	0.061%
BAND 6	120710014007	\$ 32.54	377	0.022%
BAND 6	120710901001	\$ 32.57	115	0.007%
BAND 6	120830025022	\$ 32.64	1,911	0.112%
BAND 6	120179806004	\$ 32.68	1,039	0.061%
BAND 6	120710701004	\$ 32.74	797	0.047%
BAND 6	120179806005	\$ 32.79	426	0.025%
BAND 6	120150202001	\$ 32.84	389	0.023%
BAND 6	120070001002	\$ 32.91	285	0.017%
BAND 6	120710403071	\$ 32.92	111	0.007%
BAND 6	120710104012	\$ 32.96	282	0.016%
BAND 6	120710402046	\$ 32.96	471	0.027%

FLORIDA	Census Block Group Number	Monthly Cost	Total CBG Lines Served	Percent of Total Lines
BAND 6	120210104036	\$ 32.99	444	0.026%
BAND 6	120710105011	\$ 33.02	458	0.027%
BAND 6	120710602004	\$ 33.07	426	0.025%
BAND 6	120830007023	\$ 33.07	1,012	0.059%
BAND 6	120070002002	\$ 33.14	1,239	0.072%
BAND 6	120710108026	\$ 33.16	346	0.020%
BAND 6	121290102005	\$ 33.17	1,605	0.094%
BAND 6	120710501003	\$ 33.20	703	0.041%
BAND 6	120690304023	\$ 33.33	708	0.041%
BAND 6	120710504005	\$ 33.37	491	0.029%
BAND 6	120150210004	\$ 33.44	127	0.007%
BAND 6	120710503022	\$ 33.45	475	0.028%
BAND 6	120150205003	\$ 33.52	1,510	0.088%
BAND 6	120179817005	\$ 33.53	482	0.028%
BAND 6	120519602001	\$ 33.53	1,275	0.075%
BAND 6	121170214031	\$ 33.54	217	0.013%
BAND 6	120710602001	\$ 33.56	143	0.008%
BAND 6	121010325004	\$ 33.68	392	0.023%
BAND 6	120710401041	\$ 33.72	828	0.048%
BAND 6	120210114003	\$ 33.74	863	0.050%
BAND 6	120710501005	\$ 33.76	965	0.056%
BAND 6	120710802016	\$ 33.86	717	0.042%
BAND 6	120710601003	\$ 33.96	267	0.016%
BAND 6	120710402045	\$ 33.99	437	0.026%
BAND 6	120710104016	\$ 34.07	235	0.014%
BAND 6	120179807002	\$ 34.10	227	0.013%
BAND 6	120210104021	\$ 34.16	434	0.025%
BAND 6	120179805003	\$ 34.19	398	0.023%
BAND 6	120710401024	\$ 34.20	119	0.007%
BAND 6	120970405033	\$ 34.21	1,282	0.075%
BAND 6	120730027004	\$ 34.23	1,430	0.084%
BAND 6	120710403042	\$ 34.24	381	0.022%
BAND 6	120690311001	\$ 34.39	623	0.036%
BAND 6	120179817003	\$ 34.40	437	0.026%
BAND 6	120970404003	\$ 34.44	1,334	0.078%
BAND 6	120179809001	\$ 34.46	750	0.044%
BAND 6	120559605005	\$ 34.47	547	0.032%
BAND 6	120279803005	\$ 34.48	577	0.034%
BAND 6	120950179005	\$ 34.49	215	0.013%
BAND 6	120710104014	\$ 34.50	366	0.021%
BAND 6	121319506004	\$ 34.50	897	0.052%
BAND 6	120950162004	\$ 34.51	146	0.009%
BAND 6	120710402012	\$ 34.51	119	0.007%
BAND 6	120710018001	\$ 34.54	416	0.024%
BAND 6	120690305024	\$ 34.55	1,153	0.067%
BAND 6	120690302032	\$ 34.56	1,194	0.070%
BAND 6	120830025017	\$ 34.57	82	0.005%
BAND 6	120559615006	\$ 34.60	187	0.011%
BAND 6	120710108033	\$ 34.64	363	0.021%

FLORIDA	Census Block Group Number	Monthly Cost	Total CBG Lines Served	Percent of Total Lines
BAND 6	120710701005	\$ 34.67	555	0.032%
BAND 6	120830024022	\$ 34.69	1,010	0.059%
BAND 6	120179804003	\$ 34.69	830	0.048%
BAND 6	121199901005	\$ 34.71	729	0.043%
BAND 6	120690311002	\$ 34.80	1,165	0.068%
BAND 6	120690301017	\$ 34.83	308	0.018%
BAND 6	120710701001	\$ 34.87	432	0.025%
BAND 6	120830006023	\$ 34.88	1,043	0.061%
BAND 6	121270910031	\$ 34.90	928	0.054%
BAND 6	120710107002	\$ 34.92	558	0.033%
BAND 6	121050160001	\$ 34.93	306	0.018%
BAND 6	120710403011	\$ 34.96	226	0.013%
BAND 6	120710102014	\$ 34.99	168	0.010%
BAND 6	120690307022	\$ 34.99	655	0.038%
BAND 6	120710101032	\$ 35.12	125	0.007%
BAND 6	121010322001	\$ 35.12	975	0.057%
BAND 6	121199904004	\$ 35.14	493	0.029%
BAND 6	121199904001	\$ 35.21	571	0.033%
BAND 6	120559601005	\$ 35.23	692	0.040%
BAND 6	120559614007	\$ 35.24	318	0.019%
BAND 6	120279803006	\$ 35.32	367	0.021%
BAND 6	120210104035	\$ 35.33	416	0.024%
BAND 6	120710403012	\$ 35.33	117	0.007%
BAND 6	120710702004	\$ 35.37	311	0.018%
BAND 6	120710302003	\$ 35.37	676	0.039%
BAND 6	120830025016	\$ 35.53	207	0.012%
BAND 6	120710102016	\$ 35.64	113	0.007%
BAND 6	120950170026	\$ 35.80	1,975	0.115%
BAND 6	120950172002	\$ 35.92	346	0.020%
BAND 6	120710403065	\$ 35.95	213	0.012%
BAND 6	120519601001	\$ 35.96	519	0.030%
BAND 6	120710802022	\$ 36.00	204	0.012%
BAND 6	121270910022	\$ 36.05	550	0.032%
BAND 6	120710401011	\$ 36.08	347	0.020%
BAND 6	120150201002	\$ 36.14	399	0.023%
BAND 6	120690311006	\$ 36.23	473	0.028%
BAND 6	120710402035	\$ 36.25	327	0.019%
BAND 6	120179816003	\$ 36.40	1,259	0.074%
BAND 6	120950171013	\$ 36.42	692	0.040%
BAND 6	120830010001	\$ 36.43	3,712	0.217%
BAND 6	120279801003	\$ 36.58	1,534	0.090%
BAND 6	120970405054	\$ 36.59	1,512	0.088%
BAND 6	121270910021	\$ 36.64	655	0.038%
BAND 6	120710104031	\$ 36.64	229	0.013%
BAND 6	120950178011	\$ 36.70	1,244	0.073%
BAND 6	120639805001	\$ 36.74	477	0.028%
BAND 6	120710208001	\$ 36.79	322	0.019%
BAND 6	120690313028	\$ 36.81	1,932	0.113%
BAND 6	120179803004	\$ 36.89	2,206	0.129%

FLORIDA	Census Block Group Number	Monthly Cost	Total CBG Lines Served	Percent of Total Lines
BAND 6	120830007022	\$ 36.90	667	0.039%
BAND 6	120559605006	\$ 37.10	165	0.010%
BAND 6	120710505004	\$ 37.14	340	0.020%
BAND 6	120710102026	\$ 37.16	151	0.009%
BAND 6	120939902002	\$ 37.20	667	0.039%
BAND 6	120710102015	\$ 37.24	213	0.012%
BAND 6	120150301002	\$ 37.25	519	0.030%
BAND 6	120939903002	\$ 37.31	255	0.015%
BAND 6	120710102013	\$ 37.36	150	0.009%
BAND 6	120950172001	\$ 37.47	127	0.007%
BAND 6	120710104015	\$ 37.67	102	0.006%
BAND 6	120559601002	\$ 37.74	554	0.032%
BAND 6	120710303005	\$ 37.76	191	0.011%
BAND 6	120830012022	\$ 37.76	1,133	0.066%
BAND 6	120210112031	\$ 37.81	541	0.032%
BAND 6	120830011013	\$ 37.84	2,039	0.119%
BAND 6	120690303014	\$ 37.88	170	0.010%
BAND 6	120710702001	\$ 37.97	519	0.030%
BAND 6	120690303012	\$ 38.23	650	0.038%
BAND 6	120710603006	\$ 38.26	240	0.014%
BAND 6	120710401031	\$ 38.29	169	0.010%
BAND 6	120710503011	\$ 38.45	1,253	0.073%
BAND 6	121170210003	\$ 38.48	388	0.023%
BAND 6	120830008002	\$ 38.62	1,914	0.112%
BAND 6	120710601001	\$ 38.69	184	0.011%
BAND 6	120830025014	\$ 38.78	156	0.009%
BAND 6	120639807002	\$ 38.80	751	0.044%
BAND 6	120690310003	\$ 38.81	792	0.046%
BAND 6	120439501001	\$ 38.84	484	0.028%
BAND 6	120210109002	\$ 38.88	776	0.045%
BAND 6	120730026025	\$ 39.02	444	0.026%
BAND 6	120710302006	\$ 39.05	487	0.028%
BAND 6	120830010003	\$ 39.06	2,826	0.165%
BAND 6	120970405051	\$ 39.07	1,283	0.075%
BAND 6	120710019027	\$ 39.08	609	0.036%
BAND 6	120830003021	\$ 39.09	917	0.054%
BAND 6	120179809002	\$ 39.10	661	0.039%
BAND 6	120710202004	\$ 39.18	529	0.031%
BAND 6	120690310002	\$ 39.18	869	0.051%
BAND 6	120210109003	\$ 39.27	316	0.018%
BAND 6	120639810003	\$ 39.35	1,124	0.066%
BAND 6	120710108015	\$ 39.38	288	0.017%
BAND 6	120710701002	\$ 39.45	495	0.029%
BAND 6	120830026023	\$ 39.45	1,142	0.067%
BAND 6	120210109009	\$ 39.58	773	0.045%
BAND 6	120710102017	\$ 39.64	191	0.011%
BAND 6	120179803003	\$ 39.67	395	0.023%
BAND 6	120150204005	\$ 39.86	539	0.032%
BAND 6	121199904002	\$ 39.94	279	0.016%

FLORIDA	Census Block Group Number	Monthly Cost	Total CBG Lines Served	Percent of Total Lines
BAND 6	120690305015	\$ 40.04	851	0.050%
BAND 6	120830026031	\$ 40.09	3,333	0.195%
BAND 6	121319503004	\$ 40.10	379	0.022%
BAND 6	120710506006	\$ 40.27	210	0.012%
BAND 6	120179801005	\$ 40.36	747	0.044%
BAND 6	120690312006	\$ 40.47	984	0.057%
BAND 6	120710303004	\$ 40.49	298	0.017%
BAND 6	120179812004	\$ 40.54	489	0.029%
BAND 6	120830012011	\$ 40.71	597	0.035%
BAND 6	120730026023	\$ 40.74	629	0.037%
BAND 6	120710102027	\$ 40.78	241	0.014%
BAND 6	120830003022	\$ 40.84	851	0.050%
BAND 6	120179815004	\$ 40.88	748	0.044%
BAND 6	120150105001	\$ 40.89	1,176	0.069%
BAND 6	120910206003	\$ 40.97	978	0.057%
BAND 6	120710403015	\$ 41.09	68	0.004%
BAND 6	120499701003	\$ 41.12	385	0.022%
BAND 6	120690309022	\$ 41.25	1,023	0.060%
BAND 6	120710801005	\$ 41.34	161	0.009%
BAND 6	120150105002	\$ 41.41	2,208	0.129%
BAND 6	120559613005	\$ 41.44	2,524	0.148%
BAND 6	120910213009	\$ 41.44	539	0.031%
BAND 6	120970401024	\$ 41.54	1,518	0.089%
BAND 6	120710603004	\$ 41.67	129	0.008%
BAND 6	120179808005	\$ 41.67	237	0.014%
BAND 6	121199904003	\$ 41.92	475	0.028%
BAND 6	120710102029	\$ 41.99	82	0.005%

SUMMARY	Percent of Total:	8.1%
BAND 6	Weighted Average Cost:	\$ 36.33

BAND 7	120830006031	\$ 42.01	688	0.040%
BAND 7	121199901004	\$ 42.14	447	0.026%
BAND 7	121010327003	\$ 42.20	431	0.025%
BAND 7	120179811003	\$ 42.23	1,925	0.112%
BAND 7	120710403014	\$ 42.31	75	0.004%
BAND 7	120939901001	\$ 42.38	1,683	0.098%
BAND 7	120690312003	\$ 42.41	300	0.018%
BAND 7	120970405055	\$ 42.44	936	0.055%
BAND 7	120730025043	\$ 42.48	712	0.042%
BAND 7	120210104031	\$ 42.57	2,127	0.124%
BAND 7	120179810002	\$ 42.63	348	0.020%
BAND 7	120559602001	\$ 42.64	623	0.036%
BAND 7	120710016005	\$ 42.64	206	0.012%
BAND 7	120950172004	\$ 42.65	221	0.013%
BAND 7	120730024023	\$ 42.65	570	0.033%
BAND 7	120179807001	\$ 42.71	2,342	0.137%
BAND 7	120710301003	\$ 42.75	207	0.012%

FLORIDA	Census Block Group Number	Monthly Cost	Total CBG Lines Served	Percent of Total Lines
BAND 7	120710603007	\$ 42.87	49	0.003%
BAND 7	120970405052	\$ 42.87	1,160	0.068%
BAND 7	120599604005	\$ 42.90	1,380	0.081%
BAND 7	120710401012	\$ 42.95	1,120	0.065%
BAND 7	120070001004	\$ 42.96	571	0.033%
BAND 7	120730024022	\$ 43.02	1,553	0.091%
BAND 7	120710401043	\$ 43.06	677	0.040%
BAND 7	120710503021	\$ 43.08	750	0.044%
BAND 7	120179816002	\$ 43.15	1,467	0.086%
BAND 7	120559617007	\$ 43.20	212	0.012%
BAND 7	120830009012	\$ 43.26	1,060	0.062%
BAND 7	120939904004	\$ 43.34	180	0.011%
BAND 7	120830010002	\$ 43.64	202	0.012%
BAND 7	120710402034	\$ 43.68	121	0.007%
BAND 7	120279802001	\$ 43.81	336	0.020%
BAND 7	120150305001	\$ 43.81	698	0.041%
BAND 7	121010324002	\$ 44.03	746	0.044%
BAND 7	120710603003	\$ 44.05	177	0.010%
BAND 7	120639804002	\$ 44.05	793	0.046%
BAND 7	120710104017	\$ 44.06	260	0.015%
BAND 7	120830009023	\$ 44.20	1,216	0.071%
BAND 7	120639809002	\$ 44.28	539	0.032%
BAND 7	120690301012	\$ 44.28	638	0.037%
BAND 7	120559610003	\$ 44.33	1,133	0.066%
BAND 7	120950175013	\$ 44.34	131	0.008%
BAND 7	120939904002	\$ 44.52	155	0.009%
BAND 7	120639809001	\$ 44.54	920	0.054%
BAND 7	120559602002	\$ 44.60	680	0.040%
BAND 7	120210104042	\$ 44.79	2,536	0.148%
BAND 7	120150102001	\$ 44.80	567	0.033%
BAND 7	120210101002	\$ 44.96	217	0.013%
BAND 7	120559617006	\$ 45.06	116	0.007%
BAND 7	120939901002	\$ 45.17	914	0.053%
BAND 7	120690313011	\$ 45.26	815	0.048%
BAND 7	120179803006	\$ 45.30	637	0.037%
BAND 7	120710403031	\$ 45.34	55	0.003%
BAND 7	120210114001	\$ 45.37	840	0.049%
BAND 7	121290102002	\$ 45.40	923	0.054%
BAND 7	120519602005	\$ 45.47	630	0.037%
BAND 7	120690301016	\$ 45.53	897	0.052%
BAND 7	120690312004	\$ 45.62	777	0.045%
BAND 7	120210111022	\$ 45.85	309	0.018%
BAND 7	121199904005	\$ 45.86	903	0.053%
BAND 7	121339702001	\$ 45.89	521	0.030%
BAND 7	120690301015	\$ 45.93	699	0.041%
BAND 7	120730013004	\$ 45.98	4	0.000%
BAND 7	120559616005	\$ 46.21	209	0.012%
BAND 7	120179805001	\$ 46.47	1,337	0.078%
BAND 7	120530001004	\$ 46.50	548	0.032%

FLORIDA	Census Block Group Number	Monthly Cost	Total CBG Lines Served	Percent of Total Lines
BAND 7	120950171012	\$ 46.53	514	0.030%
BAND 7	121290101005	\$ 46.58	447	0.026%
BAND 7	120799903002	\$ 46.68	674	0.039%
BAND 7	120710503012	\$ 46.69	325	0.019%
BAND 7	120710101036	\$ 46.70	152	0.009%
BAND 7	121270908011	\$ 46.74	434	0.025%
BAND 7	120639809004	\$ 46.76	698	0.041%
BAND 7	120710603005	\$ 46.76	164	0.010%
BAND 7	120530003002	\$ 46.80	680	0.040%
BAND 7	120690301031	\$ 46.80	947	0.055%
BAND 7	120910203001	\$ 46.88	1,014	0.059%
BAND 7	120939904007	\$ 46.95	752	0.044%
BAND 7	120599603001	\$ 46.97	825	0.048%
BAND 7	120690311005	\$ 47.09	1,141	0.067%
BAND 7	121010327002	\$ 47.11	397	0.023%
BAND 7	120830006013	\$ 47.13	900	0.053%
BAND 7	120710701003	\$ 47.18	587	0.034%
BAND 7	120970405042	\$ 47.41	1,117	0.065%
BAND 7	120710403032	\$ 47.41	55	0.003%
BAND 7	121170214049	\$ 47.43	23	0.001%
BAND 7	120710101016	\$ 47.55	222	0.013%
BAND 7	121010323001	\$ 47.56	885	0.052%
BAND 7	120499701005	\$ 47.60	281	0.016%
BAND 7	120710301001	\$ 47.62	420	0.025%
BAND 7	120690301022	\$ 47.62	612	0.036%
BAND 7	120070002001	\$ 47.62	1,228	0.072%
BAND 7	120970405056	\$ 47.78	593	0.035%
BAND 7	120690303011	\$ 47.86	1,175	0.069%
BAND 7	120070004001	\$ 47.93	661	0.039%
BAND 7	120710401016	\$ 48.05	80	0.005%
BAND 7	120559615003	\$ 48.10	505	0.030%
BAND 7	121199902005	\$ 48.15	234	0.014%
BAND 7	120690313012	\$ 48.17	762	0.045%
BAND 7	120830026011	\$ 48.24	944	0.055%
BAND 7	120710402031	\$ 48.39	35	0.002%
BAND 7	120559605001	\$ 48.46	776	0.045%
BAND 7	120710403017	\$ 48.48	68	0.004%
BAND 7	120710102021	\$ 48.49	108	0.006%
BAND 7	120150301004	\$ 48.52	209	0.012%
BAND 7	120830025013	\$ 48.60	295	0.017%
BAND 7	120659801987	\$ 48.66	814	0.048%
BAND 7	120690304015	\$ 48.70	872	0.051%
BAND 7	121199901001	\$ 48.73	538	0.031%
BAND 7	121199905002	\$ 48.83	973	0.057%
BAND 7	120659801985	\$ 48.84	453	0.026%
BAND 7	120179808001	\$ 49.00	486	0.028%
BAND 7	120799901002	\$ 49.09	705	0.041%
BAND 7	121319502001	\$ 49.16	861	0.050%
BAND 7	120710019015	\$ 49.22	170	0.010%

FLORIDA	Census Block Group Number	Monthly Cost	Total CBG Lines Served	Percent of Total Lines
BAND 7	120710202003	\$ 49.24	652	0.038%
BAND 7	120150204001	\$ 49.25	260	0.015%
BAND 7	120710403073	\$ 49.38	78	0.005%
BAND 7	120710104038	\$ 49.41	335	0.020%
BAND 7	120439501004	\$ 49.47	177	0.010%
BAND 7	120910203002	\$ 49.50	1,574	0.092%
BAND 7	120179810001	\$ 49.54	367	0.021%
BAND 7	120599603003	\$ 49.60	510	0.030%
BAND 7	121319505003	\$ 49.61	321	0.019%
BAND 7	120799902002	\$ 49.65	516	0.030%
BAND 7	120210105024	\$ 49.69	360	0.021%
BAND 7	120710702002	\$ 49.71	593	0.035%
BAND 7	120639811001	\$ 49.75	466	0.027%
BAND 7	120710302007	\$ 49.76	428	0.025%
BAND 7	120599604002	\$ 49.77	921	0.054%
BAND 7	120950179004	\$ 49.78	69	0.004%
BAND 7	120279804006	\$ 49.98	811	0.047%
BAND 7	120179817006	\$ 50.03	443	0.026%
BAND 7	120939901004	\$ 50.10	610	0.036%
BAND 7	121319503001	\$ 50.13	703	0.041%
BAND 7	121319501007	\$ 50.17	198	0.012%
BAND 7	120830006034	\$ 50.21	356	0.021%
BAND 7	120690312005	\$ 50.23	846	0.049%
BAND 7	121270832013	\$ 50.26	1,058	0.062%
BAND 7	120659801986	\$ 50.34	742	0.043%
BAND 7	120910201002	\$ 50.46	665	0.039%
BAND 7	120730026021	\$ 50.53	637	0.037%
BAND 7	120830006024	\$ 50.61	592	0.035%
BAND 7	120730027002	\$ 50.72	766	0.045%
BAND 7	120710101021	\$ 50.82	1,588	0.093%
BAND 7	120710104011	\$ 50.84	155	0.009%
BAND 7	120799901001	\$ 51.03	557	0.033%
BAND 7	120710402024	\$ 51.08	138	0.008%
BAND 7	120390206001	\$ 51.08	447	0.026%
BAND 7	120210112011	\$ 51.10	359	0.021%
BAND 7	120730025023	\$ 51.17	666	0.039%
BAND 7	120070002003	\$ 51.26	595	0.035%
BAND 7	121010324001	\$ 51.27	478	0.028%
BAND 7	121199906005	\$ 51.35	665	0.039%
BAND 7	120759705003	\$ 51.36	151	0.009%
BAND 7	120559605004	\$ 51.57	21	0.001%
BAND 7	120639808002	\$ 51.59	833	0.049%
BAND 7	120710403016	\$ 51.64	69	0.004%
BAND 7	120759705002	\$ 51.66	829	0.048%
BAND 7	120710801003	\$ 51.68	144	0.008%
BAND 7	120730026011	\$ 51.69	979	0.057%
BAND 7	120530007005	\$ 51.71	768	0.045%
BAND 7	121319506002	\$ 51.93	317	0.019%
BAND 7	120210111012	\$ 51.94	1,416	0.083%

FLORIDA	Census Block Group Number	Monthly Cost	Total CBG Lines Served	Percent of Total Lines
BAND 7	120759705001	\$ 52.02	361	0.021%
BAND 7	120599604001	\$ 52.03	525	0.031%
BAND 7	120179813001	\$ 52.07	597	0.035%
BAND 7	120690310001	\$ 52.14	546	0.032%
BAND 7	120639804003	\$ 52.28	538	0.031%
BAND 7	120690302031	\$ 52.29	370	0.022%
BAND 7	120279804003	\$ 52.41	792	0.046%
BAND 7	120799903003	\$ 52.51	661	0.039%
BAND 7	120210113001	\$ 52.70	624	0.036%
BAND 7	120639810002	\$ 52.71	421	0.025%
BAND 7	121050160007	\$ 52.87	834	0.049%
BAND 7	120179805005	\$ 52.93	930	0.054%
BAND 7	120830006033	\$ 53.07	212	0.012%
BAND 7	120279804002	\$ 53.11	806	0.047%
BAND 7	121199903003	\$ 53.29	560	0.033%
BAND 7	120690303021	\$ 53.45	356	0.021%
BAND 7	121010328001	\$ 53.51	797	0.047%
BAND 7	120599602001	\$ 53.52	537	0.031%
BAND 7	120950148022	\$ 53.80	85	0.005%
BAND 7	120759706004	\$ 53.90	486	0.028%
BAND 7	120639806006	\$ 53.94	338	0.020%
BAND 7	120830007012	\$ 53.99	625	0.037%
BAND 7	120639801003	\$ 54.01	523	0.031%
BAND 7	120559615002	\$ 54.03	302	0.018%
BAND 7	120730027006	\$ 54.13	451	0.026%
BAND 7	120799903006	\$ 54.15	751	0.044%
BAND 7	120530001005	\$ 54.16	480	0.028%
BAND 7	120730023022	\$ 54.20	580	0.034%
BAND 7	120659802002	\$ 54.25	574	0.034%
BAND 7	120559610002	\$ 54.45	354	0.021%
BAND 7	120690301011	\$ 54.51	462	0.027%
BAND 7	120830006022	\$ 54.51	811	0.047%
BAND 7	121199905003	\$ 54.54	552	0.032%
BAND 7	120210109001	\$ 54.60	58	0.003%
BAND 7	121319506006	\$ 54.70	520	0.030%
BAND 7	120910230009	\$ 54.72	394	0.023%
BAND 7	121270910051	\$ 54.72	230	0.013%
BAND 7	121319505005	\$ 54.82	691	0.040%
BAND 7	121199907001	\$ 54.94	582	0.034%

SUMMARY	Percent of Total:	7.2%
BAND 7	Weighted Average Cost:	\$ 47.81

BAND 8	120639810001	\$ 55.00	637	0.037%
BAND 8	120710403035	\$ 55.24	36	0.002%
BAND 8	120519603002	\$ 55.31	739	0.043%
BAND 8	120639801002	\$ 55.40	430	0.025%
BAND 8	120730025025	\$ 55.60	548	0.032%

FLORIDA	Census Block Group Number	Monthly Cost	Total CBG Lines Served	Percent of Total Lines
BAND 8	120210108007	\$ 55.88	77	0.005%
BAND 8	120499704004	\$ 55.94	563	0.033%
BAND 8	120990083011	\$ 55.97	1,114	0.065%
BAND 8	121050159003	\$ 55.97	683	0.040%
BAND 8	120830006021	\$ 56.04	67	0.004%
BAND 8	120070003002	\$ 56.06	590	0.034%
BAND 8	121199901002	\$ 56.12	547	0.032%
BAND 8	120559614003	\$ 56.16	55	0.003%
BAND 8	120910201004	\$ 56.22	589	0.034%
BAND 8	120910201003	\$ 56.47	508	0.030%
BAND 8	121199906004	\$ 56.48	353	0.021%
BAND 8	120710101035	\$ 56.54	78	0.005%
BAND 8	121010321021	\$ 56.57	292	0.017%
BAND 8	120519603003	\$ 56.63	793	0.046%
BAND 8	120150306002	\$ 56.64	178	0.010%
BAND 8	120970405043	\$ 56.91	793	0.046%
BAND 8	120639809003	\$ 57.15	245	0.014%
BAND 8	121319504001	\$ 57.19	469	0.027%
BAND 8	120730025024	\$ 57.27	488	0.029%
BAND 8	120710402044	\$ 57.53	128	0.007%
BAND 8	120950178012	\$ 57.57	999	0.058%
BAND 8	120910201005	\$ 57.67	599	0.035%
BAND 8	120710401033	\$ 57.70	94	0.006%
BAND 8	120279801001	\$ 57.73	550	0.032%
BAND 8	120070001001	\$ 57.78	469	0.027%
BAND 8	120759701001	\$ 57.88	390	0.023%
BAND 8	120599602005	\$ 57.96	532	0.031%
BAND 8	120710202002	\$ 58.01	324	0.019%
BAND 8	120390206002	\$ 58.03	421	0.025%
BAND 8	121199906003	\$ 58.06	576	0.034%
BAND 8	120179805002	\$ 58.12	323	0.019%
BAND 8	120830006032	\$ 58.21	416	0.024%
BAND 8	120710019028	\$ 58.31	465	0.027%
BAND 8	121319505002	\$ 58.31	510	0.030%
BAND 8	120639808003	\$ 58.33	494	0.029%
BAND 8	120690301023	\$ 58.33	384	0.022%
BAND 8	120639807001	\$ 58.42	604	0.035%
BAND 8	120730026022	\$ 58.52	724	0.042%
BAND 8	120499704005	\$ 58.57	819	0.048%
BAND 8	121339702003	\$ 58.60	613	0.036%
BAND 8	120939902001	\$ 58.95	622	0.036%
BAND 8	121010324005	\$ 58.98	726	0.042%
BAND 8	120710102024	\$ 58.99	76	0.004%
BAND 8	120759705006	\$ 59.30	253	0.015%
BAND 8	120559612004	\$ 59.38	565	0.033%
BAND 8	120559614001	\$ 59.39	398	0.023%
BAND 8	120690312007	\$ 59.41	789	0.046%
BAND 8	120690301021	\$ 59.42	345	0.020%
BAND 8	120730025022	\$ 59.51	652	0.038%

FLORIDA	Census Block Group Number	Monthly Cost	Total CBG Lines Served	Percent of Total Lines
BAND 8	120799902003	\$ 59.93	439	0.026%
BAND 8	120710801004	\$ 60.01	123	0.007%
BAND 8	120639811002	\$ 60.06	359	0.021%
BAND 8	120070004002	\$ 60.44	644	0.038%
BAND 8	120599601003	\$ 60.51	517	0.030%
BAND 8	120939904001	\$ 60.73	1,065	0.062%
BAND 8	120710402023	\$ 60.76	49	0.003%
BAND 8	120210108005	\$ 60.91	29	0.002%
BAND 8	120710503031	\$ 60.92	1,006	0.059%
BAND 8	121319503005	\$ 61.06	1,381	0.081%
BAND 8	121010319006	\$ 61.14	813	0.048%
BAND 8	120690313032	\$ 61.22	1,173	0.069%
BAND 8	121290102004	\$ 61.31	1,558	0.091%
BAND 8	121199906001	\$ 61.41	761	0.044%
BAND 8	120599603002	\$ 61.42	334	0.020%
BAND 8	121319501004	\$ 61.52	400	0.023%
BAND 8	120439502003	\$ 61.53	502	0.029%
BAND 8	121339703001	\$ 61.66	710	0.042%
BAND 8	120599602003	\$ 61.87	451	0.026%
BAND 8	120179808002	\$ 61.97	221	0.013%
BAND 8	120499701002	\$ 62.14	528	0.031%
BAND 8	121270910011	\$ 62.42	458	0.027%
BAND 8	120519604006	\$ 62.43	575	0.034%
BAND 8	120530001001	\$ 62.51	585	0.034%
BAND 8	120599602004	\$ 62.70	361	0.021%
BAND 8	120710402011	\$ 63.04	340	0.020%
BAND 8	120559613002	\$ 63.37	77	0.005%
BAND 8	120690312001	\$ 63.45	442	0.026%
BAND 8	121199903002	\$ 63.60	477	0.028%
BAND 8	120950179008	\$ 63.89	212	0.012%
BAND 8	121319506003	\$ 64.46	430	0.025%
BAND 8	121199905001	\$ 64.53	370	0.022%
BAND 8	121319501001	\$ 64.64	473	0.028%
BAND 8	120830006035	\$ 64.65	213	0.012%
BAND 8	120639801001	\$ 64.86	495	0.029%
BAND 8	120559617001	\$ 64.86	418	0.024%
BAND 8	120559609001	\$ 64.97	608	0.036%
BAND 8	121319504003	\$ 65.00	360	0.021%
BAND 8	121199907003	\$ 65.02	841	0.049%
BAND 8	120279804004	\$ 65.10	607	0.035%
BAND 8	120710403021	\$ 65.17	53	0.003%
BAND 8	121319506005	\$ 65.34	739	0.043%
BAND 8	121319501005	\$ 65.34	385	0.022%
BAND 8	120799901003	\$ 65.53	262	0.015%
BAND 8	120710402041	\$ 65.53	70	0.004%
BAND 8	120830006011	\$ 65.57	631	0.037%
BAND 8	121290101003	\$ 65.63	466	0.027%
BAND 8	120830001001	\$ 65.66	767	0.045%
BAND 8	121290101006	\$ 65.67	281	0.016%

FLORIDA	Census Block Group Number	Monthly Cost	Total CBG Lines Served	Percent of Total Lines
BAND 8	120179812005	\$ 65.79	177	0.010%
BAND 8	121199907002	\$ 65.98	469	0.027%
BAND 8	120070004003	\$ 66.00	560	0.033%
BAND 8	120830006036	\$ 66.03	706	0.041%
BAND 8	120179803007	\$ 66.08	70	0.004%
BAND 8	121290102003	\$ 66.35	468	0.027%
BAND 8	120710303001	\$ 66.45	289	0.017%
BAND 8	121199903001	\$ 66.86	458	0.027%
BAND 8	120710403082	\$ 66.89	45	0.003%
BAND 8	120710403022	\$ 67.09	40	0.002%
BAND 8	120279801002	\$ 67.31	803	0.047%
BAND 8	120150105004	\$ 67.35	304	0.018%
BAND 8	121319504002	\$ 67.56	356	0.021%
BAND 8	120830006012	\$ 67.58	407	0.024%
BAND 8	120499702001	\$ 67.66	501	0.029%
BAND 8	120150306001	\$ 67.79	526	0.031%
BAND 8	120710104019	\$ 67.96	31	0.002%
BAND 8	121290101002	\$ 68.01	478	0.028%
BAND 8	120439502006	\$ 68.01	415	0.024%
BAND 8	120279804005	\$ 68.41	579	0.034%
BAND 8	120830005002	\$ 68.47	350	0.020%
BAND 8	120150105003	\$ 68.47	401	0.023%
BAND 8	120559605003	\$ 68.61	26	0.002%
BAND 8	121290102007	\$ 68.81	551	0.032%
BAND 8	120499702004	\$ 68.82	561	0.033%
BAND 8	120730025021	\$ 68.86	312	0.018%
BAND 8	120559601001	\$ 68.93	871	0.051%
BAND 8	120710102012	\$ 69.08	53	0.003%
BAND 8	120599602002	\$ 69.12	453	0.026%
BAND 8	121319505001	\$ 69.31	591	0.035%
BAND 8	120710402021	\$ 69.37	212	0.012%
BAND 8	120710401052	\$ 69.38	323	0.019%
BAND 8	120799904002	\$ 69.72	644	0.038%
BAND 8	121290102006	\$ 69.92	429	0.025%
BAND 8	120659801981	\$ 69.96	643	0.038%
BAND 8	120499701001	\$ 70.13	773	0.045%
BAND 8	120690301032	\$ 70.18	474	0.028%
BAND 8	120759705007	\$ 71.14	163	0.010%
BAND 8	120830004004	\$ 71.38	604	0.035%
BAND 8	121199901003	\$ 71.45	599	0.035%
BAND 8	120690301024	\$ 71.78	430	0.025%
BAND 8	121290101004	\$ 71.94	374	0.022%
BAND 8	120639811003	\$ 72.07	165	0.010%
BAND 8	120659801982	\$ 72.13	473	0.028%
BAND 8	120499703005	\$ 72.56	440	0.026%
BAND 8	121079514007	\$ 72.65	289	0.017%
BAND 8	120559610001	\$ 72.69	324	0.019%
BAND 8	120639811007	\$ 72.71	230	0.013%
BAND 8	120499701004	\$ 72.89	787	0.046%

FLORIDA	Census Block Group Number	Monthly Cost	Total CBG Lines Served	Percent of Total Lines
BAND 8	120639802001	\$ 72.90	482	0.028%
BAND 8	120730025041	\$ 73.68	21	0.001%
BAND 8	120799902001	\$ 73.81	429	0.025%
BAND 8	120970405053	\$ 74.34	178	0.010%
BAND 8	120799904001	\$ 75.12	361	0.021%
BAND 8	120710401032	\$ 75.17	78	0.005%
BAND 8	120710101034	\$ 75.65	37	0.002%
BAND 8	120559617002	\$ 76.24	8	0.000%
BAND 8	120710402043	\$ 77.71	78	0.005%
BAND 8	120279804001	\$ 77.84	505	0.030%
BAND 8	120439502002	\$ 78.07	317	0.019%
BAND 8	120439501002	\$ 78.17	399	0.023%
BAND 8	120710403036	\$ 78.17	32	0.002%
BAND 8	120639808001	\$ 79.68	297	0.017%
BAND 8	120659802003	\$ 79.70	173	0.010%
BAND 8	120210111021	\$ 79.76	964	0.056%
BAND 8	120710102011	\$ 79.88	56	0.003%
BAND 8	120710101011	\$ 80.16	183	0.011%
BAND 8	120939901003	\$ 80.38	392	0.023%
BAND 8	120150101001	\$ 81.39	1,146	0.067%
BAND 8	120910201001	\$ 82.08	417	0.024%
BAND 8	120830005003	\$ 82.19	211	0.012%
BAND 8	120559616003	\$ 83.35	30	0.002%
BAND 8	120659802001	\$ 83.62	336	0.020%
BAND 8	120710403023	\$ 83.70	34	0.002%
BAND 8	120710402042	\$ 83.76	64	0.004%
BAND 8	120710402022	\$ 83.88	24	0.001%
BAND 8	120710101026	\$ 84.32	54	0.003%
BAND 8	120179803008	\$ 85.44	46	0.003%
BAND 8	120710104013	\$ 85.62	26	0.001%
BAND 8	120970406004	\$ 87.40	529	0.031%
BAND 8	121290102001	\$ 87.56	456	0.027%
BAND 8	121150027028	\$ 87.60	58	0.003%
BAND 8	120759705008	\$ 87.88	52	0.003%
BAND 8	120559616006	\$ 88.14	605	0.035%
BAND 8	120710401051	\$ 88.14	61	0.004%
BAND 8	120439501003	\$ 88.58	603	0.035%
BAND 8	120210112021	\$ 90.17	659	0.039%
BAND 8	120710401053	\$ 90.92	73	0.004%
BAND 8	120830012023	\$ 91.62	32	0.002%
BAND 8	120190310001	\$ 91.62	247	0.014%
BAND 8	120519602006	\$ 92.04	738	0.043%
BAND 8	120730024021	\$ 92.43	170	0.010%
BAND 8	120830011014	\$ 92.83	24	0.001%
BAND 8	120970406001	\$ 93.40	624	0.036%
BAND 8	120710403033	\$ 93.72	17	0.001%
BAND 8	120710402033	\$ 94.39	29	0.002%
BAND 8	120710403025	\$ 95.56	32	0.002%
BAND 8	120559616004	\$ 96.33	238	0.014%

<u>FLORIDA</u>	<u>Census Block Group Number</u>	<u>Monthly Cost</u>	<u>Total CBG Lines Served</u>	<u>Percent of Total Lines</u>
BAND 8	120710101033	\$ 96.84	27	0.002%
BAND 8	120710403037	\$ 97.24	21	0.001%
BAND 8	120799902004	\$ 97.60	427	0.025%
BAND 8	120559615001	\$ 97.98	291	0.017%
BAND 8	120970406002	\$ 100.21	444	0.026%
BAND 8	120910208009	\$ 100.54	294	0.017%
BAND 8	120659802004	\$ 101.74	550	0.032%
BAND 8	120710101031	\$ 103.03	34	0.002%
BAND 8	120710403068	\$ 108.58	28	0.002%
BAND 8	120830006014	\$ 111.41	122	0.007%
BAND 8	120639811004	\$ 111.63	124	0.007%
BAND 8	121079513005	\$ 111.89	65	0.004%
BAND 8	121199907004	\$ 114.28	249	0.015%
BAND 8	120519603001	\$ 115.28	407	0.024%
BAND 8	120710401014	\$ 116.13	25	0.001%
BAND 8	121150027026	\$ 116.24	30	0.002%
BAND 8	120439502001	\$ 116.25	560	0.033%
BAND 8	120710403066	\$ 118.44	16	0.001%
BAND 8	120210111023	\$ 123.07	236	0.014%
BAND 8	120759705005	\$ 125.00	48	0.003%
BAND 8	120710101024	\$ 129.15	31	0.002%
BAND 8	121319505006	\$ 136.21	47	0.003%
BAND 8	120950171014	\$ 138.17	15	0.001%
BAND 8	120559614004	\$ 143.80	15	0.001%
BAND 8	120799904004	\$ 148.65	143	0.008%
BAND 8	120799904003	\$ 149.04	107	0.006%
BAND 8	120710403081	\$ 149.26	18	0.001%
BAND 8	120710101025	\$ 150.49	19	0.001%
BAND 8	120710403024	\$ 157.07	12	0.001%
BAND 8	120710801002	\$ 157.57	23	0.001%
BAND 8	120150211986	\$ 162.04	10	0.001%
BAND 8	120639811006	\$ 163.81	27	0.002%
BAND 8	120559614005	\$ 169.07	8	0.000%
BAND 8	120710403078	\$ 182.15	10	0.001%
BAND 8	120710403076	\$ 184.85	11	0.001%
BAND 8	121239502007	\$ 185.29	77	0.004%
BAND 8	120710403034	\$ 195.68	8	0.000%
BAND 8	121150027986	\$ 199.47	11	0.001%
BAND 8	120710101013	\$ 221.00	21	0.001%
BAND 8	121150027027	\$ 242.08	7	0.000%
BAND 8	120879701004	\$ 249.02	19	0.001%
BAND 8	120710801001	\$ 249.22	3	0.000%
BAND 8	120710101023	\$ 249.44	10	0.001%
BAND 8	120730024063	\$ 249.44	5	0.000%
BAND 8	120710101022	\$ 249.44	2	0.000%
BAND 8	120710403069	\$ 249.51	1	0.000%
BAND 8	121150027984	\$ 249.52	8	0.000%
BAND 8	120150305003	\$ 249.64	2	0.000%
BAND 8	120559614006	\$ 249.76	4	0.000%

FLORIDA	Census Block Group Number	Monthly Cost	Total CBG Lines Served	Percent of Total Lines
BAND 8	120710403077	\$ 249.77	1	0.000%
BAND 8	120710101019	\$ 249.79	1	0.000%
BAND 8	120910218004	\$ 249.92	3	0.000%
BAND 8	120710401022	\$ 250.03	1	0.000%
BAND 8	120710401027	\$ 250.11	1	0.000%

SUMMARY	Percent of Total:	5.2%
BAND 8	Weighted Average Cost:	\$ 68.52

As shown in the figures above, approximately 81.4% of loops are placed within \$5.00 of their costs.

B.

Cross-Connect Facilities

Company: *Sprint Local Telephone Companies - Florida*

Rate Element: *DS3 Electrical Cross Connect*

A: Investment

1. Circuit Equipment Material				\$592.33
	<u>Hours</u>	<u>Labor Rate</u>		
2. Engineering Labor - COE - CKT	2.00	\$56.60	\$113.20	
3. Installation Labor - COE - CKT	4.50	\$42.50	\$191.25	
4. Total Labor (L2 + L4)				\$304.45
5. Total Installed Cost (L1 + L4)				\$896.78
6. Net Salvage Value - Material				\$59.23
7. Net Installed Cost (L5 - L6)				\$837.55

B. Annual Cost

Circuit Equipment		<u>Cost Factor</u>	
8. Direct Cost (TELRIC)		33.2800%	\$278.74
9. Common Cost		14.5832%	\$40.65
10. Total Annual Cost (L9 + L10)			\$319.39

C. Pricing

11. Proposed Nonrecurring Charge			\$0.00
12. Monthly Floor Cost		<i>PRICE FLOOR</i>	\$26.62

13. Proposed Monthly Rate	\$26.62
----------------------------------	----------------

Floor Cost / Unit Investment	0.3561
Floor Cost / Rate	1.0000

Company: *Sprint Local Telephone Companies - Florida*

Rate Element: *DS1 Electrical Cross Connect*

A: Investment

1. Circuit Equipment Material				\$60.41
	<u>Hours</u>	<u>Labor Rate</u>		
2. Engineering Labor - COE - CKT	0.29	\$56.60	\$16.41	
3. Installation Labor - COE - CKT	0.57	\$42.50	\$24.23	
4. Total Labor (L2 + L4)				\$40.64
5. Total Installed Cost (L1 + L4)				\$101.05
6. Net Salvage Value - Material				\$6.04
7. Net Installed Cost (L5 - L6)				\$95.01

B. Annual Cost

Circuit Equipment		<u>Cost Factor</u>	
8. Direct Cost (TELRIC)		33.2800%	\$31.62
9. Common Cost		14.5832%	\$4.61
10. Total Annual Cost (L9 + L10)			\$36.23

C. Pricing

11. Proposed Nonrecurring Charge			\$0.00
12. Monthly Floor Cost		<i>PRICE FLOOR</i>	\$3.02

13. Proposed Monthly Rate	\$3.02
----------------------------------	---------------

Floor Cost / Unit Investment	0.3585
Floor Cost / Rate	1.0000

Company: *Sprint Local Telephone Companies - Florida*

Rate Element: *DS0 Electrical Cross Connect*

A: Investment

1. Circuit Equipment Material				\$17.00
	<u>Hours</u>	<u>Labor Rate</u>		
2. Engineering Labor - COE - CKT	0.17	\$56.60	\$9.62	
3. Installation Labor - COE - CKT	0.13	\$42.50	\$5.53	
4. Total Labor (L2 + L4)				\$15.15
5. Total Installed Cost (L1 + L4)				\$32.15
6. Net Salvage Value - Material				\$1.70
7. Net Installed Cost (L5 - L6)				\$30.45

B. Annual Cost

Circuit Equipment		<u>Cost Factor</u>	
8. Direct Cost (TELRIC)		33.2800%	\$10.13
9. Common Cost		14.5832%	\$1.48
10. Total Annual Cost (L9 + L10)			\$11.61

C. Pricing

11. Proposed Nonrecurring Charge			\$0.00
12. Monthly Floor Cost		<i>PRICE FLOOR</i>	\$0.97

13. Proposed Monthly Rate	\$0.97
----------------------------------	---------------

Floor Cost / Unit Investment	0.3612
Floor Cost / Rate	1.0000

C.

Network Interface Device

**Sprint/Florida
Network Interface Device
Prices**

<u>Description</u>	<u>Monthly Recurring Price</u>
Network Interface Device w/1 line	\$ 0.91
Network Interface Device w/2 lines	\$ 1.09
Smart Jack	\$ 14.17
HDSL RT Unit	\$ 28.44

Sprint/Florida							
Network Interface Devices (NIDs)1-Line							
Cost Support							
Cost Elements	Material Code	Material Cost	Quantity	Labor Hours	Labor Rate	Total Costs	Monthly Recurring
Network Interface Device-I-Line Gel Jack							
w/355MT/Bridging Bars(Includes STax, Supply Exp.)	774222	\$ 14.96	1			\$ 14.96	
Ground Wire (Includes Sales Tax, Supply Exp.)(Fl.)	350061	\$ 0.37	6			\$ 2.22	
Ground Rod (Includes Sales Tax, Supply Exp.)	726106	\$ 5.57	1.00			\$ 5.57	
Installation-I & R (Work Group #300)				0	\$ 55.14	\$ -	
Total Capital Costs						\$ 22.75	
ACF (Weighted Drop)						41.78%	
Total Monthly Recurring							\$ 0.79
Common Cost Factor					14.58%		\$0.12
Total Monthly Revenue Requirement per 1 Line NID							\$ 0.91
Smart Jack	526172	\$ 355.18	1			\$ 355.18	
ACF (Weighted Drop)						41.78%	
Total Monthly Recurring							\$ 12.37
Common Cost Factor					14.58%		\$1.80
Total Monthly Revenue Requirement for Smart Jack							\$ 14.17

Sprint
 Docket No. 961230-TP
 Randy G. Farrar
 Composite Exhibit No. RGF-3
 Page 53 of 122

Sprint/Florida							
Network Interface Devices (NIDs)2-Line							
Cost Support							
Cost Elements	Material Code	Material Cost	Quantity	Labor Hours	Labor Rate	Total Costs	Monthly Recurring
Network Interface Device-2-Line Gel Jack							
w/355MT/Bridging Bars(Includes STax, Supply Exp.)	774223	\$ 22.31	1			\$ 22.31	
Ground Wire (Includes Sales Tax, Supply Exp.)(Fl.)	350061	\$ 0.37	6			\$ 2.22	
Ground Rod (Includes Sales Tax, Supply Exp.)	726106	\$ 5.57	0.50			\$ 2.79	
Installation-I & R (Work Group #300)				0	\$ 55.14	\$ -	
Total Capital Costs						\$ 27.32	
ACF (Weighted Drop)						41.78%	
Total Monthly Recurring							\$ 0.95
Common Cost Factor					14.58%		\$0.14
Total Monthly Revenue Requirement for Two Line NID							\$ 1.09
Smart Jack	526172	\$ 355.18	1			\$ 355.18	
ACF (Weighted Drop)						41.78%	
Total Monthly Recurring							\$ 12.37
Common Cost Factor					14.58%		\$1.80
Total Monthly Revenue Requirement for Smart Jack							\$ 14.17

HDSL RT Unit

Sprint/Florida							
Network Interface Devices (NIDs) 2-Line with HDSL							
Cost Support							
Cost Elements	Material Code	Material Cost	Quantity	Labor Hours	Labor Rate	Total Costs	Monthly Recurring
Network Interface Device-2-Line Gel Jack w/355MT/Bridging Bars(Includes STax, Supply Exp.)	774223	\$ 22.31	1			\$ 22.31	
Ground Wire (Includes Sales Tax, Supply Exp.)(Fl.)	350061	\$ 0.37	6			\$ 2.22	
Ground Rod (Includes Sales Tax, Supply Exp.)	726106	\$ 5.57	0.50			\$ 2.79	
Installation-I & R (Work Group #300)				0	\$ 55.14	\$ -	
Total Capital Costs						\$ 27.32	
ACF (Weighted Drop)						41.78%	
Total Monthly Recurring							\$ 0.95
Common Cost Factor					14.58%		\$0.14
Total Monthly Revenue Requirement for 2 Line NID							\$ 1.09
HDSL RT Unit	526767	\$ 712.88	1			\$ 712.88	
ACF (Weighted Drop)						41.78%	
Total Monthly Recurring							\$ 24.82
Common Cost Factor					14.58%		\$3.62
Total Monthly Revenue Requirement for HDSL RT Unit							\$ 28.44

Sprint
Docket No. 961230-TP
Randy G. Farrar
Composite Exhibit No. RGF-3
Page 55 of 122

Sprint/Florida						
Weighted ACF for NID						
						Weighted
			1995 y/e Bal.	% Distrib.	ACF	ACF
Aerial Metallic Drop			29,367,174	13.77%	46.77%	6.44%
Buried Metallic Drop			183,921,705	86.23%	40.98%	35.34%
			213,288,879			
						41.78%
Common Cost Percentage			14.58%			

D.

Local Switching

Local Switching Rates

Sprint-Florida

<u>Exchange</u>	<u>Rate Band</u>	<u>Rate</u>
ALTAMONTE SPRINGS, FL	1	\$ 5.82
BONITA SPRINGS, FL	1	\$ 5.82
CYPRESS LAKE, FL	1	\$ 5.82
FT MYERS BEACH, FL	1	\$ 5.82
FT. MYERS, FL	1	\$ 5.82
FT. WALTON BEACH, FL	1	\$ 5.82
GOLDENROD, FL	1	\$ 5.82
LAKE BRANTLEY, FL	1	\$ 5.82
TALLAHASSEE, FL	1	\$ 5.82
WINTER PARK, FL	1	\$ 5.82
APOPKA, FL	2	\$ 7.72
CASSELBERRY, FL	2	\$ 7.72
CHERRY LAKE, FL	2	\$ 7.72
CRYSTAL RIVER, FL	2	\$ 7.72
DESTIN, FL	2	\$ 7.72
EUSTIS, FL	2	\$ 7.72
FREEPORT, FL	2	\$ 7.72
INVERNESS, FL	2	\$ 7.72
LADY LAKE, FL	2	\$ 7.72
LEESBURG, FL	2	\$ 7.72
MADISON, FL	2	\$ 7.72
MARCO ISLAND, FL	2	\$ 7.72
MONTICELLO, FL	2	\$ 7.72
MT. DORA, FL	2	\$ 7.72
NAPLES MOORINGS, FL	2	\$ 7.72
NAPLES, FL	2	\$ 7.72
NORTH NAPLES, FL	2	\$ 7.72
OCALA, FL	2	\$ 7.72
ORANGE CITY, FL	2	\$ 7.72
PORT CHARLOTTE, FL	2	\$ 7.72
SANTA ROSA, FL	2	\$ 7.72
SEA GROVE BEACH, FL	2	\$ 7.72
WILDWOOD, FL	2	\$ 7.72

Local Switching Rates

<u>Exchange</u>	<u>Rate</u> <u>Band</u>		<u>Rate</u>
ALFORD, FL	3	\$	8.99
ARCADIA, FL	3	\$	8.99
ASTOR, FL	3	\$	8.99
BAKER, FL	3	\$	8.99
BONIFAY, FL	3	\$	8.99
BOWLING GREEN, FL	3	\$	8.99
COTTONDALE, FL	3	\$	8.99
EVERGLADES, FL	3	\$	8.99
GLENDALE, FL	3	\$	8.99
GREENVILLE, FL	3	\$	8.99
GREENWOOD, FL	3	\$	8.99
HOWEY-IN-THE-HILLS, FL	3	\$	8.99
KENANSVILLE, FL	3	\$	8.99
KINGSLEY LAKE, FL	3	\$	8.99
KISSIMMEE, FL	3	\$	8.99
LAWTEY, FL	3	\$	8.99
LEE, FL	3	\$	8.99
MAITLAND, FL	3	\$	8.99
MALONE, FL	3	\$	8.99
MONTVERDE, FL	3	\$	8.99
OKLAWAHA, FL	3	\$	8.99
PANACEA, FL	3	\$	8.99
PONCE DE LEON, FL	3	\$	8.99
REYNOLDS HILL, FL	3	\$	8.99
SALT SPRINGS, FL	3	\$	8.99
SILVER SPRINGS SHORES, FL	3	\$	8.99
SNEADS, FL	3	\$	8.99
SOPCHOPPY, FL	3	\$	8.99
ST. MARKS, FL	3	\$	8.99
TAVARES, FL	3	\$	8.99
UMATILLA, FL	3	\$	8.99
VALPRAISO, FL	3	\$	8.99
WEST KISSIMMEE, FL	3	\$	8.99
WESTVILLE, FL	3	\$	8.99
WILLISTON, FL	3	\$	8.99
WINTER GARDEN, FL	3	\$	8.99

Local Switching Rates

<u>Exchange</u>	<u>Rate</u> <u>Band</u>	<u>Rate</u>
BELLEVIEW, FL	4	\$ 10.08
BEVERLY HILLS, FL	4	\$ 10.08
BOCA GRANDE, FL	4	\$ 10.08
CAPE CORAL, FL	4	\$ 10.08
CLEWISTON, FL	4	\$ 10.08
CRESTVIEW, FL	4	\$ 10.08
DADE CITY, FL	4	\$ 10.08
DEFUNIAK SPRINGS, FL	4	\$ 10.08
FOREST, FL	4	\$ 10.08
FORT MEADE, FL	4	\$ 10.08
HOMOSASSA SPRINGS, FL	4	\$ 10.08
LEHIGH ACRES, FL	4	\$ 10.08
MOORE HAVEN, FL	4	\$ 10.08
NORTH CAPE CORAL, FL	4	\$ 10.08
NORTH FT. MYERS, FL	4	\$ 10.08
OKEECHOBEE, FL	4	\$ 10.08
PINE ISLAND, FL	4	\$ 10.08
REEDY CREEK, FL	4	\$ 10.08
SHADY ROAD, FL	4	\$ 10.08
ST. CLOUD, FL	4	\$ 10.08
STARKE, FL	4	\$ 10.08
WAUCHULA, FL	4	\$ 10.08
WINDERMERE, FL	4	\$ 10.08
ZOLFO SPRINGS, FL	4	\$ 10.08
AVON PARK, FL	5	\$ 11.66
CLERMONT, FL	5	\$ 11.66
CRAWFORDVILLE, FL	5	\$ 11.66
GROVELAND, FL	5	\$ 11.66
IMMOKALEE, FL	5	\$ 11.66
LABELLE, FL	5	\$ 11.66
PUNTA GORDA, FL	5	\$ 11.66
SAN ANTONIO, FL	5	\$ 11.66
TRILLACOOCHEE, FL	5	\$ 11.66
BUSHNELL, FL	6	\$ 13.83
CAPE HAZE, FL	6	\$ 13.83
LAKE PLACID, FL	6	\$ 13.83
MARIANNA, FL	6	\$ 13.83
SANIBEL ISLAND, FL	6	\$ 13.83
SEBRING, FL	6	\$ 13.83
SHALIMAR, FL	6	\$ 13.83
SPRING LAKE, FL	6	\$ 13.83

Local Switching Rate Bands

Exchange A	Host Name B	Total MOU C	Lines	Port Charge D	Loc Sw Rate Orig/Term MOU E	Loc Sw Revenues F=C x E	Assumed MOU G	Combined Rate H=D + (F x H)	Total Band MOU	Total Band Revenues	Band Rate	Dev to Band Rate	% Dev to Band Rate	Lines x Port Cost	Total Band Revenue	Total Band Lines	Avg Port Chg Band	Flat Rate per Band	Common Additive	Loaded Rate
ALAMONTE SPRINGS	ALSP	161,709,626	67,049	2.28	0.001961	\$ 317,147	1259	\$ 4.75				-0.00017	-8.028%	\$152,872						
WINTER PARK	WPNK	126,953,533	45,116	2.52	0.002030	\$ 257,690	1259	\$ 5.08				-0.00010	-4.809%	\$113,692						
LAKE BRANTLEY	LKBY	124,862,603	50,721	2.28	0.002102	\$ 262,399	1259	\$ 4.93				-0.00003	-1.446%	\$115,644						
CYPRESS LAKE	CYLK	106,413,702	41,259	2.52	0.002149	\$ 228,635	1259	\$ 5.23				0.00002	0.760%	\$103,973						
FT. MYERS	FTMY	80,658,699	25,213	2.50	0.002218	\$ 178,902	1259	\$ 5.29				0.00009	4.017%	\$63,033						
GOLDENROD	GLRD	135,984,438	57,292	2.41	0.002396	\$ 325,876	1259	\$ 5.43	736,582,601	\$ 1,570,649	0.00213	0.00026	12.384%	\$138,074	687,287	286,650	\$ 2.40	\$ 5.08	1.145832	\$ 5.82
OCALA	OCAL	132,268,350	90,046	2.28	0.003176	\$ 420,080	1259	\$ 6.28				-0.00030	-8.513%	\$205,305						
NAPLES MOORINGS	NMOR	82,208,791	59,037	2.48	0.003415	\$ 280,776	1259	\$ 6.78				-0.00006	-1.616%	\$146,412						
CASSELBERRY	CSLB	55,097,735	41,710	2.37	0.003440	\$ 189,542	1259	\$ 6.70				-0.00003	-0.905%	\$98,853						
ORANGE CITY	ORCY	53,919,317	28,547	2.39	0.003467	\$ 186,945	1259	\$ 6.76				0.00000	-0.126%	\$68,227						
APOPKA	APPK	90,027,517	49,199	2.28	0.003546	\$ 319,225	1259	\$ 6.74				0.00007	2.142%	\$112,174						
NORTH NAPLES	NNPL	56,897,527	37,518	2.63	0.003769	\$ 214,463	1259	\$ 7.38				0.00030	8.578%	\$98,672						
LEESBURG	LSBG	66,401,608	43,478	2.28	0.003803	\$ 252,544	1259	\$ 7.07	536,820,844	\$ 1,863,575	0.00347	0.00033	9.557%	\$99,130	828,773	349,535	\$ 2.37	\$ 6.74	1.145832	\$ 7.72
OCALA	OCAL	2,820,283	1,920	2.97	0.003951	\$ 11,142	1259	\$ 7.94				-0.00037	-8.485%	\$ 5,702						
BELLEVIEW	BLVW	10,243,580	7,680	2.50	0.004038	\$ 41,368	1259	\$ 7.58				-0.00028	-6.456%	\$19,200						
TAVARES	TVRS	30,378,828	22,770	2.28	0.004226	\$ 128,383	1259	\$ 7.60				-0.00009	-2.109%	\$51,916						
MAITLAND	MTLD	32,645,345	23,422	2.28	0.004296	\$ 140,245	1259	\$ 7.69				-0.00002	-0.488%	\$53,402						
WEST KISSIMMEE	WKSJ	44,332,733	26,843	2.28	0.004381	\$ 194,219	1259	\$ 7.80				0.00006	1.479%	\$61,202						
LEESBURG	LSBG	9,774,375	6,400	2.91	0.004383	\$ 42,838	1259	\$ 8.43				0.00007	1.519%	\$18,624						
NAPLES MOORINGS	NMOR	7,129,580	5,120	2.76	0.004454	\$ 31,754	1259	\$ 8.37				0.00014	3.169%	\$14,131						
TAVARES	TVRS	10,257,024	7,688	2.76	0.004599	\$ 47,176	1259	\$ 8.55	147,581,748	\$ 637,125	0.00432	0.00028	6.540%	\$21,219	245,396	101,843	\$ 2.41	\$ 7.84	1.145832	\$ 8.99
NORTH FT. MYERS	NFMJ	24,296,053	19,200	2.69	0.004783	\$ 116,206	1259	\$ 8.71				-0.00032	-6.310%	\$51,648						
BELLEVIEW	BLVW	41,671,896	31,243	2.28	0.004881	\$ 203,388	1259	\$ 8.42				-0.00022	-4.394%	\$71,234						
WEST KISSIMMEE	WKSJ	6,341,977	3,840	2.67	0.004965	\$ 31,486	1259	\$ 8.92				-0.00014	-2.750%	\$10,253						
SHADY ROAD	SHRD	56,691,754	40,543	2.28	0.005035	\$ 285,425	1259	\$ 8.62				-0.00007	-1.378%	\$92,438						
BEVERLY HILLS	BVHL	7,799,644	7,680	2.50	0.005044	\$ 39,340	1259	\$ 8.85				-0.00006	-1.200%	\$19,200						
LEHIGH ACRES	LHAC	26,022,959	19,765	2.28	0.005216	\$ 135,740	1259	\$ 8.85				0.00011	2.177%	\$45,064						
BEVERLY HILLS	BVHL	23,706,651	23,343	2.28	0.005377	\$ 127,481	1259	\$ 9.05				0.00027	5.336%	\$53,222						
LABELLE	LBLI	10,114,298	8,960	2.79	0.005428	\$ 54,905	1259	\$ 9.62				0.00032	6.335%	\$24,998						
DADE CITY	DDCY	25,546,687	22,253	2.28	0.005493	\$ 140,326	1259	\$ 9.20	222,191,920	\$ 1,134,295	0.00511	0.00039	7.598%	\$50,737	418,794	176,827	\$ 2.37	\$ 8.80	1.145832	\$10.08
LABELLE	LBLI	19,201,363	17,010	2.28	0.006025	\$ 115,680	1259	\$ 9.86				-0.00016	-2.571%	\$38,783						
CLERMONT	CLMT	26,273,520	20,841	2.28	0.006251	\$ 164,249	1259	\$10.15				0.00007	1.099%	\$47,517						
CLERMONT	CLMT	3,227,303	2,560	2.83	0.006289	\$ 20,296	1259	\$10.75				0.00011	1.704%	\$7,245						
DADE CITY	DDCY	5,877,816	5,120	2.97	0.006341	\$ 37,273	1259	\$10.95	54,580,002	\$ 337,499	0.00618	0.00016	2.552%	\$15,206	108,751	45,531	\$ 2.39	\$10.17	1.145832	\$11.66
CAPE HAZE	CPHZ	17,094,970	15,144	2.28	0.007602	\$ 129,957	1259	\$11.85				-0.00013	-1.732%	\$34,528						
SEBRING	SBNG	4,227,230	6,400	2.88	0.007723	\$ 32,648	1259	\$12.60				-0.00001	-0.166%	\$18,432						
SEBRING	SBNG	32,818,498	49,687	2.28	0.007808	\$ 256,232	1259	\$12.11	54,140,698	\$ 418,836	0.00774	0.00007	0.924%	\$113,286	166,247	71,231	\$ 2.33	\$12.07	1.145832	\$13.83
Sorted by Local Switching MOU Rate		1,751,897,813	1,031,617			\$ 5,961,979								\$2,455,248						
Total Cost		\$ 5,961,979			Total Cost	\$2,455,248		Avg MOU/Line	1,698											
Total MOU		1,751,897,813			Total Lines	1,031,617														
Avg. State Rate/MOU		\$ 0.003403			Avg Rate/Line	\$ 2.38														

Sprint
 Docket No. 961230-TP
 Randy G. Farrar
 Composite Exhibit No. RGF-3
 Page 61 of 122

Average Minutes of Use per Line and Trunk

Sprint
 Docket No. 961230-TP
 Randy G. Farrar
 Composite Exhibit No. RGF-3
 Page 62 of 122

Sprint-Florida

EXCHANGE	Orig & Term		Total Lines (c)	Line	Trunk
	Total Line MOU (a)	Total Trunk MOU (b)		Average MOU (a/c)	Average MOU (b/c)
Altamonte Spring	88,921,873	72,787,753	67,049	1,326	1,086
Apopka	52,740,381	37,287,136	49,199	1,072	758
Bellevue	31,302,317	20,613,159	38,923	804	530
Beverly Hills	19,300,393	12,205,902	31,023	622	393
Cape Haze	12,145,776	4,949,194	15,144	802	327
Clemont	18,605,426	10,895,397	23,401	795	466
Dade City	21,306,613	10,117,890	27,373	778	370
Ft Myers	48,394,457	32,264,242	25,213	1,919	1,280
Labelle	20,828,434	8,487,227	25,970	802	327
Cypress Lake	62,321,215	44,092,487	41,259	1,510	1,069
Leesburg	48,527,095	27,648,888	49,878	973	554
Lehigh Acres	16,261,791	9,761,168	19,765	823	494
N. Ft Myers	13,509,523	10,786,530	19,200	704	562
N. Naples	32,634,968	24,262,559	37,518	870	647
Ocala	91,799,529	43,289,104	91,966	998	471
Naples Moorings	54,468,283	34,870,088	64,157	849	544
Orange City	32,192,327	21,726,990	28,547	1,128	761
Shady Road	32,825,297	23,866,457	40,543	810	589
Sebring	25,191,386	11,854,342	56,087	449	211
Tavares	24,314,275	16,321,577	30,458	798	536
West Kissimmee	27,141,775	23,532,935	30,683	885	767
Winter Park	69,606,656	57,346,877	45,116	1,543	1,271
Casselberry	29,700,137	25,397,598	41,710	712	609
Goldenrod	74,178,005	61,806,433	57,292	1,295	1,079
Lake Brantley	68,952,635	55,909,968	50,721	1,359	1,102
Maitland	17,734,410	14,910,935	23,422	757	637
Totals	1,034,904,977	716,992,836	1,031,617	1,003	695
Total Line/Trunk MOU		1,751,897,813			

MOU Calc (Total Line Avg. MOU / SE Stdy Avg. Orig MOU <809>) * SE Stdy Class of Serv. MOU
Port Type SE Stdy Calculation Orig & Term by Class of Service
 Basic Port 600 ((1003+695)/809)*600 **1,259**

E.

Tandem Switching

Tandem Switching Rate Development

<i>Sprint-Florida</i>			
Exchange	Tandem Sw MOU Rate *	Interoffice Host Trunk MOU	Tandem Cost
ALTAMONTE SPRINGS, FL	\$ 0.001920	57,073,831	\$ 109,582
APOPKA	\$ 0.002820	22,735,763	\$ 64,115
BELLEVUE	\$ 0.002760	12,478,685	\$ 34,441
BEVERLY HILLS	\$ 0.003550	8,177,006	\$ 29,028
CAPE HAZE	\$ 0.008010	3,275,932	\$ 26,240
CLERMONT	\$ 0.004010	9,107,511	\$ 36,521
DADE CITY	\$ 0.003940	7,752,256	\$ 30,544
FT. MYERS	\$ 0.003980	32,264,242	\$ 128,412
LABELLE	\$ 0.004470	4,722,389	\$ 21,109
CYPRESS LAKE	\$ 0.001950	29,045,534	\$ 56,639
LEESBURG	\$ 0.003050	19,843,917	\$ 60,524
LEHIGH ACRES	\$ 0.003660	9,761,168	\$ 35,726
NORTH FT. MYERS	\$ 0.005360	7,910,122	\$ 42,398
NORTH NAPLES	\$ 0.003290	9,362,795	\$ 30,804
OCALA	\$ 0.002220	26,418,940	\$ 58,650
NAPLES MOORINGS	\$ 0.003120	20,260,490	\$ 63,213
ORANGE CITY	\$ 0.002800	10,036,565	\$ 28,102
SHADY ROAD	\$ 0.002740	11,810,491	\$ 32,361
SEBRING	\$ 0.004450	7,255,228	\$ 32,286
TAVARES	\$ 0.002720	10,829,965	\$ 29,458
WEST KISSIMMEE	\$ 0.003100	12,734,000	\$ 39,475
WINTER PARK	\$ 0.002250	44,330,829	\$ 99,744
CASSELBERRY	\$ 0.002380	21,500,580	\$ 51,171
GOLDENROD	\$ 0.001870	35,570,092	\$ 66,516
LAKE BRANTLEY	\$ 0.001690	47,444,272	\$ 80,181
MAITLAND	\$ 0.005230	14,910,935	\$ 77,984
		496,613,539	\$ 1,365,224
* (2 x Trunk CCS) + Trunk Setup			
Total Cost	\$ 1,365,224		
Total MOU		496,613,539	
Avg. Tandem/MOU Rate	\$ 0.002749		
Common Additive		1.145832	
Total Avg. Tandem MOU Rate	\$ 0.003150		

F.

**Loop, Port & NID Combination
Discount**

Company: Sprint - Florida

Rate Element: Discount for Combination of NID, Loop, Local Switching
(Basic Voice Grade Service)

	1	Total Households included in BCM2 Study	893,555
	2	Households 0 to 10 Kft	214,363
	3	Households 10 Kft to 15 Kft	200,891
	4	Households in the 10 - 15 band under 12 Kft (2,000 / 5,000 * L 3)	80,356
	5 = 1 - 2 - 4	Total Households over 12 Kft	598,836
	6 = 5 / 1 * 100	Percent Households over 12 Kft	67.0172%
	7	Average Line Card Cost per Local Switching Study	\$2.38
	8	Common Factor	1.145832
	9 = 7 * 8 * 6	Discount	\$1.83

G.

Call Termination

Local Switching Interconnection Rates

Sprint-Florida

<u>Exchange</u>	<u>Rate</u> <u>Band</u>		<u>Rate</u>
ALTAMONTE SPRINGS, FL	1	\$	0.002384
BONITA SPRINGS, FL	1	\$	0.002384
CYPRESS LAKE, FL	1	\$	0.002384
FT MYERS BEACH, FL	1	\$	0.002384
FT. WALTON BEACH, FL	1	\$	0.002384
GOLDENROD, FL	1	\$	0.002384
LAKE BRANTLEY, FL	1	\$	0.002384
TALLAHASSEE, FL	1	\$	0.002384
WINTER PARK, FL	1	\$	0.002384
CASSELBERRY, FL	2	\$	0.003418
FT. MYERS, FL	2	\$	0.003418
OCALA, FL	2	\$	0.003418
ORANGE CITY, FL	2	\$	0.003418
APOPKA, FL	3	\$	0.003978
CHERRY LAKE, FL	3	\$	0.003978
CRYSTAL RIVER, FL	3	\$	0.003978
DESTIN, FL	3	\$	0.003978
EUSTIS, FL	3	\$	0.003978
FREEPORT, FL	3	\$	0.003978
INVERNESS, FL	3	\$	0.003978
KISSIMMEE, FL	3	\$	0.003978
LADY LAKE, FL	3	\$	0.003978
LEESBURG, FL	3	\$	0.003978
MADISON, FL	3	\$	0.003978
MARCO ISLAND, FL	3	\$	0.003978
MONTICELLO, FL	3	\$	0.003978
MT. DORA, FL	3	\$	0.003978
NAPLES MOORINGS, FL	3	\$	0.003978
NAPLES, FL	3	\$	0.003978
NORTH NAPLES, FL	3	\$	0.003978
PORT CHARLOTTE, FL	3	\$	0.003978
SANTA ROSA, FL	3	\$	0.003978
SEA GROVE BEACH, FL	3	\$	0.003978
TAVARES, FL	3	\$	0.003978
VALPRAISO, FL	3	\$	0.003978
WILDWOOD, FL	3	\$	0.003978

Local Switching Interconnection Rates

Sprint
Docket No. 961230-TP
Randy G. Farrar
Composite Exhibit No. RGF-3
Page 78 of 122

<u>Exchange</u>	<u>Rate</u> <u>Band</u>	<u>Rate</u>
ALFORD, FL	4	\$ 0.004911
ARCADIA, FL	4	\$ 0.004911
ASTOR, FL	4	\$ 0.004911
BAKER, FL	4	\$ 0.004911
BELLEVIEW, FL	4	\$ 0.004911
BONIFAY, FL	4	\$ 0.004911
BOWLING GREEN, FL	4	\$ 0.004911
COTTONDALE, FL	4	\$ 0.004911
EVERGLADES, FL	4	\$ 0.004911
GLENDALE, FL	4	\$ 0.004911
GREENVILLE, FL	4	\$ 0.004911
GREENWOOD, FL	4	\$ 0.004911
HOWEY-IN-THE-HILLS, FL	4	\$ 0.004911
KENANSVILLE, FL	4	\$ 0.004911
KINGSLEY LAKE, FL	4	\$ 0.004911
LAWTEY, FL	4	\$ 0.004911
LEE, FL	4	\$ 0.004911
LEHIGH ACRES, FL	4	\$ 0.004911
MAITLAND, FL	4	\$ 0.004911
MALONE, FL	4	\$ 0.004911
MONTVERDE, FL	4	\$ 0.004911
OKEECHOBEE, FL	4	\$ 0.004911
OKLAWAHA, FL	4	\$ 0.004911
PANACEA, FL	4	\$ 0.004911
PONCE DE LEON, FL	4	\$ 0.004911
REYNOLDS HILL, FL	4	\$ 0.004911
SALT SPRINGS, FL	4	\$ 0.004911
SHADY ROAD, FL	4	\$ 0.004911
SILVER SPRINGS SHORES, FL	4	\$ 0.004911
SNEADS, FL	4	\$ 0.004911
SOPCHOPPY, FL	4	\$ 0.004911
ST. MARKS, FL	4	\$ 0.004911
UMATILLA, FL	4	\$ 0.004911
WEST KISSIMMEE, FL	4	\$ 0.004911
WESTVILLE, FL	4	\$ 0.004911
WILLISTON, FL	4	\$ 0.004911
WINTER GARDEN, FL	4	\$ 0.004911

Local Switching Interconnection Rates

<u>Exchange</u>	<u>Rate</u> <u>Band</u>		<u>Rate</u>
AVON PARK, FL	5	\$	0.005813
BEVERLY HILLS, FL	5	\$	0.005813
BOCA GRANDE, FL	5	\$	0.005813
CAPE CORAL, FL	5	\$	0.005813
CLERMONT, FL	5	\$	0.005813
CRAWFORDVILLE, FL	5	\$	0.005813
CRESTVIEW, FL	5	\$	0.005813
DADE CITY, FL	5	\$	0.005813
FOREST, FL	5	\$	0.005813
FORT MEADE, FL	5	\$	0.005813
HOMOSASSA SPRINGS, FL	5	\$	0.005813
IMMOKALEE, FL	5	\$	0.005813
LABELLE, FL	5	\$	0.005813
NORTH CAPE CORAL, FL	5	\$	0.005813
NORTH FT. MYERS, FL	5	\$	0.005813
REEDY CREEK, FL	5	\$	0.005813
ST. CLOUD, FL	5	\$	0.005813
STARKE, FL	5	\$	0.005813
WINDERMERE, FL	5	\$	0.005813
CLEWISTON, FL	6	\$	0.007233
DEFUNIAK SPRINGS, FL	6	\$	0.007233
GROVELAND, FL	6	\$	0.007233
MOORE HAVEN, FL	6	\$	0.007233
PINE ISLAND, FL	6	\$	0.007233
PUNTA GORDA, FL	6	\$	0.007233
SAN ANTONIO, FL	6	\$	0.007233
SEBRING, FL	6	\$	0.007233
TRILLACOCHEE, FL	6	\$	0.007233
WAUCHULA, FL	6	\$	0.007233
ZOLFO SPRINGS, FL	6	\$	0.007233
BUSHNELL, FL	7	\$	0.008898
CAPE HAZE, FL	7	\$	0.008898
LAKE PLACID, FL	7	\$	0.008898
MARIANNA, FL	7	\$	0.008898
SANIBEL ISLAND, FL	7	\$	0.008898
SHALIMAR, FL	7	\$	0.008898
SPRING LAKE, FL	7	\$	0.008898

Local Switching Interconnection Rate Bands

Sprint-Florida												
Exchange A		Host Name B	MOU C	Rate D	Rate x MOU E=C x D	Total Band MOU Sum D	Total Band Revenues Sum F	Band Avg Rate Rate	Deviation From Avg Rate	% Deviation From Avg Rate	Common Additive	Loaded Avg Rate
ALTAMONTE SPRINGS	in	ALSP	72,787,753	0.001971	\$143,466				-0.000110	-5.27%		
LAKE BRANTLEY	in	LKBY	55,909,968	0.001974	\$110,345				-0.000107	-5.14%		
CYPRESS LAKE	in	CYLN	44,092,487	0.002101	\$92,657				0.000021	1.00%		
WINTER PARK	in	WNPX	57,346,877	0.002129	\$122,068				0.000048	2.30%		
GOLDENROD	in	GLRD	61,806,433	0.002247	\$138,901	291,943,518	\$607,437	0.002081	0.000167	8.01%	1.145832	0.002384
OCALA	in	OCAL	42,385,345	0.002824	\$119,709				-0.000158	-5.31%		
FT. MYERS	in	FTMY	32,264,242	0.002890	\$93,244				-0.000093	-3.10%		
CASSELBERRY	in	CSLB	25,397,598	0.003101	\$78,770				0.000119	3.99%		
ORANGE CITY	in	ORCY	21,726,990	0.003290	\$71,478	121,774,175	\$363,202	0.002983	0.000307	10.30%	1.145832	0.003418
APOPKA	in	APPK	37,287,136	0.003324	\$123,957				-0.000147	-4.23%		
NAPLES MOORINGS	in	NMOR	32,087,307	0.003336	\$107,038				-0.000136	-3.91%		
LEESBURG	in	LSBG	24,101,174	0.003532	\$85,120				0.000060	1.74%		
TAVARES	in	TRVS	12,201,796	0.003700	\$45,148				0.000229	6.59%		
NORTH NAPLES	in	NNPL	24,262,559	0.003702	\$89,811	129,939,973	\$451,074	0.003471	0.000230	6.63%	1.145832	0.003978
OCALA	out	OCAL	903,759	0.003910	\$3,534				-0.000376	-8.77%		
BELLEVUE	out	BLVW	4,067,237	0.003960	\$16,106				-0.000326	-7.60%		
WEST KISSIMMEE	in	WKSM	20,587,771	0.003988	\$82,109				-0.000297	-6.94%		
BELLEVUE	in	BLVW	16,545,922	0.004122	\$68,196				-0.000164	-3.83%		
SHADY ROAD	in	SHRD	23,866,457	0.004278	\$102,092				-0.000008	-0.19%		
TAVARES	out	TRVS	4,119,781	0.004390	\$18,086				0.000104	2.43%		
LEESBURG	out	LSBG	3,547,714	0.004440	\$15,752				0.000154	3.60%		
NAPLES MOORINGS	out	NMOR	2,782,781	0.004460	\$12,411				0.000174	4.07%		
LEHIGH ACRES	in	LHAC	9,761,168	0.004660	\$45,487				0.000374	8.73%		
MAITLAND	in	MTLD	14,910,935	0.004660	\$69,485	101,093,524	\$433,258	0.004286	0.000374	8.73%	1.145832	0.004911
BEVERLY HILLS	in	BVHL	9,184,230	0.004733	\$43,470				-0.000340	-6.70%		
BEVERLY HILLS	out	BVHL	3,021,672	0.004860	\$14,685				-0.000213	-4.20%		
DADE CITY	in	DDCY	8,225,383	0.004914	\$40,420				-0.000159	-3.14%		
WEST KISSIMMEE	out	WKSM	2,945,164	0.004970	\$14,637				-0.000103	-2.04%		
NORTH FT. MYERS	in	NFMY	10,786,530	0.005049	\$54,465				-0.000024	-0.47%		
LABELLE	in	LBLN	5,559,019	0.005443	\$30,255				0.000369	7.28%		
CLERMONT	in	CLMT	9,703,473	0.005443	\$52,815	49,425,471	\$250,748	0.005073	0.000370	7.29%	1.145832	0.005813
LABELLE	out	LBLN	2,928,208	0.005670	\$16,603				-0.000643	-10.18%		
DADE CITY	out	DDCY	1,892,507	0.006260	\$11,847				-0.000053	-0.83%		
CLERMONT	out	CLMT	1,191,924	0.006270	\$7,473				-0.000043	-0.67%		
SEBRING	in	SBNG	10,501,662	0.006506	\$68,324	16,514,300	\$104,247	0.006313	0.000193	3.06%	1.145832	0.007233
SEBRING	out	SBNG	1,352,680	0.007390	\$9,996				-0.000376	-4.84%		
CAPE HAZE	in	CPHZ	4,949,194	0.007868	\$38,943	6,301,874	\$48,939	0.007766	0.000103	1.32%	1.145832	0.008898
TOTAL			716,992,836		\$2,258,905							

H.

**Common Channel Signaling
Interconnection Service**

Company: Sprint Florida

Services: Common Channel Signalling Interconnection Service
- STP Port
- STP Switching
- STP Transport Links

Service Cost Type: Network Elements

Service Description: Common Channel Signalling / Signaling System 7 (CCS/SS7) Interconnection Service provides a signaling path between a customer designated point of signalling premises and an Sprint LTD Signal Transfer Point (STP). This two-way signaling path provides the customer interconnection to the out-of-band Signaling network in order to transmit and receive signaling information related to call completion.

The link facilities for CCS/SS7 Interconnection Service will consist of a 56.0 kbps circuit, or an optional DS-1 (1.544 Mbps) channel at the customer designated premises multiplexed by the OTC to a 56.0 kbps circuit for interconnection to the STP Port. The STP Port is the interface equipment, contained in the STP, to which the interconnecting link terminates.

The STP switching service is for the routing of the ISDN Users Part (ISUP) message through the STP. The rate for switching is applied on the basis of equivalent 56.0 kbps trunks per month. The T-1 rate would be equal to 24 times the STP switching rate per 56.0 kbps trunk per month.

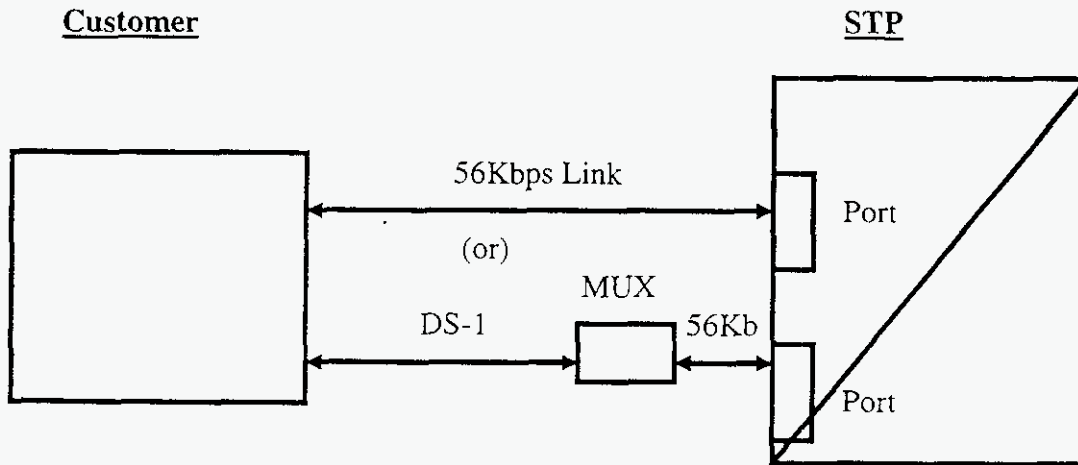
CCS/SS7 Interconnection Service must be purchased by the customer to interconnect to both STPs of a mated pair. Also the interconnecting links should be provisioned with diversity as established in generally accepted industry technical standards for out of band signaling networks.

Application

CCS/SS7 Interconnection Service is used by the customer to interconnect to an OTC's out-of-band signaling network to support Feature Group D call setup using the SS7 protocol rather than the in-band MF signaling typically used. The SS7 signalling protocol also allows for the transmission of additional data between networks for use by interexchange carriers and LECs to provide services to end users such as calling number and calling name delivery. Interconnection for these purposes can occur to each mated pair of STPs deployed in the Sprint LTD network..

CCS/SS7 Interconnection Service also provides for interconnection by the customer to data base services such as LIDB. However, since the LIDB resides on Service Control Points located in Johnson City and Bristol, Tennessee, for LIDB Access Service the CCS/SS7 Interconnection Service must be ordered to the mated pair of STPs in those two locations.

Diagram



Rates for SS-7 Interconnection Service

STP Port	\$498.97 per month
STP Switching	\$.09 per equivalent DS0 trunk per month

Basis: TELRIC Cost Study (Attached)

56.0 Kbps Link	\$82.00 per month (fixed) \$ 4.80 per month per mile
----------------	---

1.544 Mbps Link	\$93.00 per month (fixed) \$20.00 per month per mile
-----------------	---

Multiplexing DS1 to DS0 (required with 1.544 Mbps)	\$318.00 per month \$142.00 Non-Recurring
--	--

Basis for multiplexing and Links (Proxy)Interstate Access Tariff CCS/SS7 Interconnection Service

**Sprint Florida
SS7 Switching
Cost Support**

Monthly Revenue Requirement Per SS7 Trunk		\$ 0.078740
Common Costs	0.145832 Rate	<u>0.011482812</u>
Price for SS7 Trunk Switching per trunk/ per month		\$ 0.09

1 Company Name: Sprint Florida
 2 Study Name: SS7 Usage Component
 3 Study Date: January 9, 19
 4 Income Tax Rate 38.57% After Tax Capital Cost
 5 Debt Cost 8.06% 5.00% After Tax Wtd. Cost
 6 Debt Percent 42.00%
 7 Equity Cost 15.78% 9.15%
 8 Equity Percent 58.00%
 9 Capital Cost 12.54% 11.25% Total Cap. Cost
 10 Ad Valorem Tax Factor 1.88%
 11 Maintenance Factor 3.34%
 12 Demand Input
 13 Study Life (yrs) 7
 14 Revenues Accounted 1
 Mid-year=1 or Year End=2

Note: All unprotected cells are user inputs.

Populate demand to duration of study life or deprec. life, which ever is greater

	Year 1	Year 2	Year 3	Year 4	Year 5	Year 6	Year 7
15 Demand Units-Year End	166	206	215	223	233	242.32	252.0128
16 Demand Units - Mid-Year	83	186	211	219	228	238	247
17a Investment-MACRS Class of Plant (yrs)	3	\$0	\$0	\$0	\$0	\$0	\$0
17b Investment-MACRS Class of Plant (yrs)	5	\$4,923,837	\$390,926	\$417,365	\$335,619	\$214,260	\$138,839
17c Investment-MACRS Class of Plant (yrs)	7	\$0	\$0	\$0	\$0	\$0	\$0
17d Investment-MACRS Class of Plant (yrs)	10	\$0	\$0	\$0	\$0	\$0	\$0
17e Investment-MACRS Class of Plant (yrs)	15	\$0	\$0	\$0	\$0	\$0	\$0
17f Investment-MACRS Class of Plant (yrs)	20	\$0	\$0	\$0	\$0	\$0	\$0
17g Period Beginning Expense (Software)		\$0	\$0	\$0	\$0	\$0	\$0
18 Residual Benefit(=)/Cost(=) (Salv/COR)		\$0	\$0	\$0	\$0	\$0	\$0
19 Cumulative Investment	\$4,923,837	\$5,314,763	\$5,762,128	\$6,097,767	\$6,312,027	\$6,450,866	\$6,541,059
20 Principle Repayment (rate purposes)	\$703,405	\$768,560	\$858,033	\$941,942	\$1,013,362	\$1,082,782	\$1,172,975
21 Cumulative Principle Repayment	\$703,405	\$1,471,965	\$2,329,998	\$3,271,940	\$4,285,302	\$5,368,084	\$6,541,059
22 Value to Recover (unrecovered principle)	\$4,923,837	\$4,611,358	\$4,290,163	\$3,767,769	\$3,040,087	\$2,165,564	\$1,172,975
23 Debt and Equity Cost	\$38,520	\$125,573	\$231,084	\$358,231	\$508,442	\$683,484	\$887,170
24 Ad Valorem Tax	\$74,055	\$50,312	\$36,916	\$27,197	\$15,275	\$7,716	\$5,344
25 Maintenance Expense	\$164,407	\$177,460	\$192,397	\$203,604	\$210,759	\$215,394	\$218,406
26 Software Expense & Other Oper. Exp.	6%	\$485,523	\$508,192	\$534,134	\$553,597	\$566,022	\$574,073
27 A-Link Expense		\$631,648	\$701,831	\$772,014	\$849,216	\$934,137	\$1,130,306
28 Income Tax	(\$401,391)	(\$69,035)	\$231,754	\$163,799	\$384,044	\$522,966	\$663,696
29 Revenue Requirement	\$1,696,167	\$2,262,893	\$2,856,332	\$3,297,578	\$3,632,041	\$4,113,965	\$4,657,200
30 Discount Rate @ 11.25%	4.93	0.94808	0.85219	0.76600	0.68852	0.61888	0.55629
31 Present Value of Rev. Req.	\$1,608,103	\$1,928,412	\$2,187,939	\$2,270,451	\$2,247,805	\$2,288,542	\$2,328,702
32 Cumulative PV Rev. Req.	\$1,608,103	\$3,536,516	\$5,724,454	\$7,994,906	\$10,242,710	\$12,531,252	\$14,859,954
33 NPV Dollars last Yr.	\$14,815,640	\$14,815,640	\$14,815,640	\$14,815,640	\$14,815,640	\$14,815,640	\$14,815,640
34 Demand (Mid-Year) Units	83	186	211	219	228	238	247
35 Discount Rate @ 11.25%	0.94808	0.85219	0.76600	0.68852	0.61888	0.55629	0.50002
36 Present Value of Demand	79	159	161	151	141	132	124
37 Cumulative PV Demand	79	237	398	549	690	823	946
38 NPV Units in Service	191.91	946	946	946	946	946	946
39 Levelized Rev. Req./Year	\$15,659	\$15,659	\$15,659	\$15,659	\$15,659	\$15,659	\$15,659
40 Revenue Generated	\$1,299,718	\$2,912,621	\$3,296,273	\$3,429,377	\$3,570,310	\$3,721,578	\$3,870,442
41 Discount Rate @ 11.25%	0.9481	0.8522	0.7660	0.6885	0.6189	0.5563	0.5000
42 PV Revenue by Year	\$1,232,238	\$2,482,104	\$2,524,932	\$2,361,198	\$2,209,600	\$2,070,263	\$1,935,305
43 Levelized Rev. Req./Month	\$1,304.94	\$1,304.94	\$1,304.94	\$1,304.94	\$1,304.94	\$1,304.94	\$1,304.94
SS7 Port Rev Req/Month	\$ 435.47						
Residue SS7 Rev Req/Month	\$ 869.47						
46 Total Access Lines as of	1,765,984						
47 Convert to Trunks 10 to	176,598						
48 Residue SS7 Rev.Req/Month/Trunk	\$ 0.07874	Times Shared	1.1458	\$ 0.09	Per Trunk Per Month		

I.

Line Information Database Service

Company: Sprint Florida

Service: Line Information Database (LIDB) Administration Service

Service Cost Type: Network Element

Service Description

LIDB Administration Service provides administrative support to the Line Information Database. This service provides the administrative interface for automated loads and updates of carrier line information including Alternate Billing Service restrictions (ABS) and Personal Identification numbers in the LIDB database. In addition, this service monitors queries to the LIDB and responds to alerts initiated by queries exceeding predetermined thresholds.

Major Cost Areas and Sources

These updates occur through the Database Administration System II (DBASII) which is provided at the Sprint United Management Company Intelligent Network Administrative Center located in Overland Park, Kansas. The major costs include:

- Software Right to Use Fees
- Labor and Benefits

The sources of cost information are the Budget for the operation of the DBAS, and vendor quotes for software.

Cost Development Methodology

The TELRIC cost development for LIDB Administrative Service is comprised of 5 steps.

1. Determine the Direct Costs These include determining the annual operating budget of the Intelligent Network Administrative Center for Wages and Benefits and Miscellaneous Expenses, the cost of annual right to use fees for software from the vendor, and the depreciation for capitalized, supporting DBAS computer equipment and software. One time costs were depreciated/ amortized over a 5 year economic life. A return on capital cost is calculated using a 11.25 % after tax return times average net plant value. Taxes were calculated using the 1996 Kansas composite tax rate of .3978% because INAC operations are located in Kansas where INAC revenues are booked. Other Direct Costs were determined based on a factor applied to direct Costs. The factor was obtained from the Indirect Investment and Common Expense Summary Study.

2. Determine Common Costs - A common cost factor of 14.5832 % was identified through the embedded cost study for Service Management Systems and Call related Databases and was multiplied times the direct cost in step 1.

3. Determine Demand The demand is projected 1997 Sprint Local Companies access line telephone numbers stored in the Sprint United Management Company (SUMC) Line Information Database. These were forecast based on an assumed 3 percent annual growth rate beginning with a 7/96 basis of 6,935,381 telephone numbers.

4. Determine the LIDB Administrative System Cost per access line per month: The direct costs in step 1 are added to the common expense determined in step 3 and divided by the demand in step 4 and divided by 12 months to arrive at a cost for LIDB Administrative System and Services per access line per month. The result is

\$.056 per telephone number record stored in the SUMC LIDB per month

Line Information Database Administration Service		
Cost Support		
1. INAC Net Direct Cost		\$ 3,629,179
2. INAC Depreciation Cost		\$ 258,812
3. Return @ 11.25 Percent		\$ 87,349
4. Subtotal (1+2+3)		\$ 3,975,340
5. Taxes		\$ 34,747
6. Subtotal Plus Taxes (4+5)		\$ 4,010,087
7. Other Direct Cost		\$ 176,259
8. Total Direct Costs		\$ 4,186,347
9. Common Costs		\$ 610,503
10. Total Costs		\$ 4,796,850
11. 7/97 Projected Access Lines		7,143,442
12. Annual Expense Per Access Line (10/ 11)	\$	0.6715
13. Monthly Expense Per Access Line (Ln. 12 / 12 mo)	\$	0.056
Line Information Data Base Administration Service		
Cost Per Access Line Per Month	\$	0.056

Company: Sprint Florida

Service: Line Information Database (LIDB) Access Service

Service Cost Type: Network Element

Service Description

LIDB Access Service provides the customer the ability to access billing validation data contained on the Telephone Company's LIDB located in Johnson City, Tennessee and Bristol, Tennessee. The LIDB is accessed through the Telephone Company SS7 network utilizing the American National Standards Institute (ANSI) signalling protocol. Access to the Telephone Company's LIDB provides customers the ability to provide toll fraud protection by validating calling card and toll billing exception data and performing public telephone checks.

CLEC LIDB data placed in the telephone company LIDB is administered for initial inclusion and subsequent updates for Personal Identification number, and Alternate Billing Service (ABS) restrictions via the **Line Information Database Administration Service** Network Element described in a separate service description.

LIDB Query Transport and LIDB Query Services are described partially below and in full in the Common Channel Signalling / Signaling System 7 (CCS/SS7) Data Base Services section of the Sprint Local Telephone Companies Interstate Access Tariff F.C.C. No. 1..

Query Transport

The Query Transport rate element is charged per query for use of the transmission facilities between the Telephone company's STPs located in Johnson City, Tennessee and Bristol, Tennessee and The Telephone Company SCP where the LIDB resides.

LIDB Query

The LIDB Query rate element provides for the validation of calling card and toll billing exception data and performance of public telephone checks. For these validation purposes, LIDB Access Service customers will query the LIDB located in the Telephone Company SCP via the Telephone Company CCS/SS7 network. The LIDB will respond with a verification signal message back to the LIDB Access Service customer via the Telephone Company CCS/SS7 network.

Rate Categories:

\$0.0166 Query Transport per query

\$0.0366 per database query

Company: Sprint Florida

Service: Toll Free Code (TFC) Access Service

Service Cost Type: Network Element

Service Description

TFC Access Service is an originating service that is provided via TFC Access Service switched trunk groups, or may be provided in conjunction with FGB, FGC, or FGD. The service provides for the forwarding of end user dialed TFC calls to a Telephone Company Service Switching Point (SSP) which will initiate a query to the Telephone Company's TFC data base to perform the customer identification function. The call is forwarded to the appropriate customer based on the dialed TFC number. The customer has the option of having the TFC dialed number (e.g., 800-NXX-XXXX) or, if the TFC to Local Exchange Number Translation optional feature is specified, a translated ten digit local exchange number (i.e., NPA-NXX-XXXX) delivered to the customer premises.

The provision of TFC Access Service requires access to the TFC Service Management System (TFC SMS) by a Responsible Organization on behalf of the customer or through direct access by the customer to the TFC SMS.

TFC Access Services are described partially below and in full in Toll Free Code (TFC) Access Service section of the Sprint Local Telephone Companies Interstate Access Tariff F.C.C. No. 1..

Data Base Optional Service Features

In addition to the TFC call routing (e.g., 1+800-NXX-XXXX) described in (A) preceding, at the customer's option, the Telephone Company will perform additional call routing service options as follows:

(1) **TFC to Local Exchange Number Translation**

This option allows a TFC Access Service customer to specify standard local exchange telephone numbers for TFC call completion at the terminating end. When a TFC call is to be routed to a local exchange telephone number, the TFC Access Service customer must provide to its Responsible Organization or to the TFC SMS, the full ten digit local exchange number (NPA-NXX-XXXX) to be associated with the TFC number and indicate to which carrier the local exchange telephone number is to be delivered. If the TFC to Local Exchange Number Translation

optional feature is used, the customer will be unable to determine that such calls originated as TFC dialed calls (e.g., 1+800-NXX-XXXX) unless the customer also orders the Flexible Automatic Number Identification (Flex ANI) optional feature.

(2) Customized TFC Call Routing

This option allows for routing to multiple carriers, except as specified in Section 6.2.5(A), or variable terminating locations for TFC call completion based on the following criteria:

- time of day
- day of week
- specific days of the year (e.g., December 25)
- percentage of traffic (in one percent increments)
- calling telephone number (unless technical limitations exist which do not provide for originating number identification).

With this option, TFC calls can be delivered to the carrier in either the direct dialed TFC number format or in the local exchange telephone number translated format. The customer must enter the desired format and the necessary ten digit local exchange telephone number, if any, into the TFC SMS or provide such information to its Responsible Organization for handling.

Basis for Rates:

The rates identified herein are based on the Sprint Local Telephone Companies Interstate Access Tariff F.C.C. No. 1..

Rate Categories:

\$.008498 TFC Access Service Data Base Query per query

\$.001419 TFC Data Base Optional Service Features per query

J.

**Directory Assistance Database
Listing & Update Service**

Company: Sprint Florida

Service: Directory Assistance Database Listing and Update

Service Cost Type: Network Element

Service Description: Directory Assistance Database Listing and Update service is the provision of Subscriber Listing Information for the purpose of providing carriers information so that they can provision their own directory assistance databases supporting their provision of directory assistance service to end users. The basis of this service is the underlying end user subscriber listing that consists of customer telephone number, published/ non-published, or non listed status, primary directory classification for businesses, and customer address. In addition, each provision of add, delete and change activity updates constitutes an initial or update listing. Listings and Updates are provided each business day of the year. The media (e.g. tape or data communications) by which the listings are provided and the transport cost of that media is in addition to the cost per listing or update.

Major Cost Areas and Sources: These listings and updates occur as a result of business office service activity for initial, change of service, or termination of service activity. The major source of cost is the labor, wages and benefits of personnel directly validating the data and correcting any erroneous information, and the shared costs for service order activity and computer processing of information and common costs of business overhead.

The direct cost of producing a subscriber listing involves costs for :

- personnel and payroll costs for validating and correcting information entered into the data repository,
- managing the repository of data ,
- Other direct costs of buildings, and other supporting facilities supporting the personnel performing these functions

Common Costs are the costs to recover Executive and General and Administrative Expenses.

Pricing of Subscriber List Data Methodology

1. **Determine Direct cost** Identify the direct cost of subscriber list information (SLI)

- Number Services Groups Wages and Benefits (Accounts 6622.211 and 6622.212)

2. Determine the Other Direct Cost - This cost represents buildings, and general support expenses. This is determined by multiplying the cost in 1 above by a factor determined by the Summary of Indirect Investment Related and Common Expense Factor Study for Florida for the 12 months ending December 1995. The Factor is .18621 of Direct Cost.

3. Determine Demand - Determine total number of demand transactions involving SLI supported by these expense accounts.

- Directory Assistance Listings and Updates
- White Page Listing Updates

4. Determine Common Cost - Multiply the sum of identified direct cost, and other direct cost by a carrying charge of 14.5832 percent for common costs.

5. Determine the Price Per Initial and Updated Listing - Divide the sum of direct, other direct, and Common Cost by the demand identified in (3) above. This is the cost per initial or update listing of subscriber list information (directory assistance listings).

The resulting cost for Directory Assistance Listings and Updates is:

\$.05 per initial listing or subsequent update record

Sprint- Florida
Cost Study for Directory Assistance Listings and Updates

Based on cost of Subscriber List Information (SLI)

Directory Assistance / Directory Alpha Preparation	\$ 845,526
(Account 6622.211+ 6622.212 Directory Alpha- Salaries and Benefits)	
Other Direct Operating Costs	\$ 157,445
Total Direct Operating Costs	\$ 1,002,971
Common Costs	\$ 146,265
Total Direct, Other Direct and Common Costs	\$ 1,002,971
Total Demand for Listings/Updates	20,979,314
Cost per DA/ SLI Listing or Update	\$ 0.05

Demand for DA/SLI Listings or Updates

Directory Assistance Listings and Updates	17,503,062	One master file update per year plus inward and outward movement time 6 users of the data including LTD, LDD, ATT, MCI, Excel and one other.
White Page Listings and Updates	3,476,252	Assumes 2 directories requesting subscriber listings times number of access lines as basis for listings.
Total SLI Demand	20,979,314	

Average Annual Access Lines over 5 years

		Inward Movement	Outward Movement	Total Inward and Outward Movement	
1995 Access Lines	1,691,031	560,100	477,471	1,037,571	
1996 Access Lines	1,775,268	651,413	555,313	1,206,726	84,237
1997 Access Lines	1,795,234	629,044	536,244	1,165,288	19,966
1998 Access Lines	1,745,711	642,601	593,078	1,235,679	(49,523)
1999 Access Lines	1,683,386	656,158	593,833	1,249,991	(62,325)
5 Year Average Annual Access Lines	1,738,126	627,863	551,188	1,179,051	2,917,177

K.

**Directory Assistance - Database Query
Service**

Company: Sprint Florida

Service: Directory Assistance Data Base Query Service

Cost Methodology: TELRIC

Service Cost Type: Network Element

Service Description

Directory Assistance (DA) Data Base Query service makes Sprint-Florida's electronic directory listing information database. (The same database used by Sprint Florida Directory Assistance Operators) available for access by CLECs. The functions of this service include access to the directory listing information, use of the data base equipment and software for the purpose of searching the database, and the local area network providing access to the data base from the CLEC's directory assistance positions and network routers.. The CLEC desiring access to the data base is required to provide all of the necessary routers connecting the Sprint Florida DA Local Area Network the connecting links and other routers to interconnect to their own DA center. CLEC systems must be compatible with ILEC systems.

Rate Application

The rate for directory assistance database query service is based on per database position seizure measurements. Every initiated search of the database is a position seizure.

Major Cost Areas and Sources

The major cost areas include: the maintenance of the directory listing information and the hardware and software costs associated with the data base equipment and local area network. The sources for these costs are the subscriber listing TELRIC costs for Sprint Florida, the vendor quotes and the Sprint Florida engineering estimates contained in Sprint Florida's project to implement a new directory assistance system

Cost Development Methodology (Attachment A)

The TELRIC cost development methodology for Directory Assistance Data Base Query Service is comprised of five (5) steps:

1. Determine the Direct Costs. These include the hardware and software one-time and recurring costs associated with the directory assistance database portion of the directory assistance system. The subscriber listing direct cost that is used to determine TELRIC for subscriber listing information is included to reflect the cost of information contained in the data base. The one-time costs were depreciated/ amortized over a five (5) economic life. A return on capital cost was computed using a 11.25% after tax return, and includes taxes.
2. Determine Other Direct Costs Other Direct Costs are those costs associated with providing the buildings, maintenance, and network support as identified in a factor by the Summary of Indirect Investment Related and Common Expense Factors Study for Sprint Florida for the twelve months ending December 1995. Other Direct Costs for Directory Assistance Services are 58.107percent of investment.
3. Determine Common Cost. The sum of direct identified and other direct cost was multiplied by Sprint Florida's common cost factor of 14.5382% to determine the allowed common cost as identified in the Summary of Indirect Investment Related and Common Expense Factors Study for Sprint Florida for the twelve months ending December 1995.
4. Determine the Demand. The demand is the annual 1995 position seizures.
5. Determine the cost per initial position seizure. The sum of direct identified costs, other direct costs and common costs is divided by demand to get cost per database seizure. The resulting TELRIC per call is:

\$.044 per database seizure

Sprint - Florida
Cost Study for Directory Assistance Database Access Service

<u>Assumptions</u>			<u>Data Source Reference</u>		
1	Database Hardware Cost	\$ 551,027	1	IBM System Quote	
2	Database Software Cost	\$ 1,376,220	2	IBM System Quote	
3	Total Capitalized Hardware/Software	\$ 1,927,247	3	Line 1 +2	
4	Hardware Annual Maintenance	\$ 44,717	4	IBM System Quote	
5	Software Annual Maintenance	\$ 197,205	5	IBM System Quote	
6	After Tax Rate of Return	11.25%	6	Interstate Allowed ROR	
7	Depreciation Rate (yrs)	\$ 5.00	7	Estimated System Life Assumption based on General Purpose Computer Life.	
8	Database Updates	\$ 145,859	8	\$.05 direct cost per listing from subscriber listing study times average of 5 year annual access lines and inward/outward movement.	
9	***** Blank Line *****	** Blank Line **	9	***** Blank Line *****	
10	***** Blank Line *****	** Blank Line **	10	***** Blank Line *****	
11	Income Tax Factor	38.7500%	11	Florida Income Tax Rate	
12	***** Blank Line *****	** Blank Line **	12	***** Blank Line *****	
13	***** Blank Line *****	** Blank Line **	13	***** Blank Line *****	
14	Property Tax Factor	0.01880	14	Line 12 / Line 13	
15	Total Data Base Seizures	54,419,814	15	Annual Directory Assistance Database Queries by UTF Operators	

Cost Analysis

16	Annual Depreciation	\$ 385,449	16	Line 3 / Line 7	
17	Annual Maintenance	\$ 241,922	17	Line 4 + Line 5	
18	Average Annual Return	\$ 108,408	18	Line 3 * Line 6	
19	Annual Property Tax	\$ 36,232	19	Line 14 * Line 3	
20	Annual Income Tax	\$ 42,008	20	Line 11 * Line 18	
21	Data Base Updates	\$ 145,859	21	Line 8	
22	***** Blank Line *****	** Blank Line **	22	***** Blank Line *****	
23	Total Direct Cost	\$ 959,878	23	Sum of Lines 16 through 21	
24	Other Direct Costs	\$ 1,119,865	24	.58107 times total investment on line 3	
25	Total Direct Costs	\$ 2,079,744	25	Sum lines 23 and 24	
26	Common Costs	\$ 303,293	26	.145832 times line 25	
26a	***** Blank Line *****	** Blank Line **	26a	***** Blank Line *****	
26b	Total Costs	\$ 2,383,037	26b	Sum lines 25, 26	
27	Cost per database initial seizure	\$ 0.044	27	Line 26b divided by line 15	

Directory Assistance Platform Cost (IBM System Quote for Florida)

			Annual Maintenance	
	Hardware	Software	Hardware	Software
DA System Inquiry	\$ 180,343	\$ 536,660	\$ 16,536	\$ 174,120
DA System Audio	\$ 225,951	\$ 350,806	\$ 23,153	
DA System Network	\$ 59,327	\$ 10,080	\$ 5,028	\$ 1,335
Installation	\$ 31,000	\$ 271,308		
Admin Workstation	\$ 2,854	\$ 45,166		\$ 1,980
Database Conversion		\$ 83,200		
File Update Process		\$ 79,000		\$ 18,000
Network TPORT				
Gateway/Router	\$ 51,552			\$ 1,770
Total	\$ 551,027	\$ 1,376,220	\$ 44,717	\$ 197,205

Return Calculation

		<u>Year 1</u>	<u>Year 2</u>	<u>Year 3</u>	<u>Year 4</u>	<u>Year 5</u>
Gross Investment	\$ 1,927,247	\$ 1,734,522	\$ 1,349,073	\$ 963,624	\$ 578,174	\$ 192,725
Annual Return	\$ 542,038	\$ 195,134	\$ 151,771	\$ 108,408	\$ 65,045	\$ 21,682
Avg. Annual Return	\$ 108,408					

L.

Toll & Local Operator Assistance

Company: Sprint Florida
Service: Toll and Local Assistance Service (Live)
Cost Methodology: TELRIC
Service Cost Type: Network Element

Service Description

The Toll and Local Assistance Service (Live) provides live assistance to a customer to complete a telephone call. The functionality includes a live operator, and the associated facilities and equipment necessary to record for billing and / or completion of the call.

Major Cost Areas and Sources

The major costs included the development of TELRIC for Toll and Local Assistance Service (Live) are:

- Operator labor
- Position equipment and local area networking

The sources for the TELRIC costs are Sprint Florida's general ledger, vendor quotes and Sprint Florida's engineering estimates for the operator/ DA connecting network contained in Sprint Florida's project to implement a new directory assistance system.

The operator workforce expenses are those number completion services related expenses found in Sprint Florida's general ledger. The position equipment are from vendor quotes. The local area networking costs are those contained in the project to implement a new directory assistance system in Sprint Florida.

Cost Development Methodology (Attachment A)

The TELRIC cost development for Toll and Local Assistance Service (live) is comprised of five (5) steps:

1. Determine the Direct Costs. These include the 1995 operator workforce expenses, and the hardware and software one-time and recurring costs associated with toll assistance positions, and the local area network for the new directory assistance system. The one-time costs are depreciated/amortized over a five (5) year economic life. A return on capital cost is calculated using a 11.25% after tax return and taxes are included. .
2. Determine Other Direct Costs Other Direct Costs were determined via a factor resulting from the Indirect Investment Related and Common Expense Factor study for Sprint- Florida for the twelve month period ending December 1995. This factor for Operator Services is 18.62 percent of directly identified expenses.
3. Determine the Common Cost. The common cost is determined by multiplying Sprint Florida's common cost factor of 14.583% by the total of direct and other direct cost.
4. Determine the Demand. The demand is the annual, 1995 Toll and Local Assistance position seizures.
5. Determine the Toll and Local Assistance Service (Live) TELRIC per call The sum of direct costs, other direct costs, and common costs are divided by the demand (step 4) to determine the Toll and Local Assistance Service (Live) cost per initial position seizure. The result is:

Cost for Toll and Local Assistance : \$.496 per initial position seizure

**Sprint - Florida
Cost Study for Toll Assistance Service (Live)**

<u>Assumptions:</u>		<u>Data Source Reference</u>
1 Integrated Workstation (IWS) Per Unit	\$ 10,300	1 Based on Quote from NORTEL for 5 Intelligent Workstations at \$51,500
2 Toll and Assist Workstations	73	2 Per Network Department
3 Toll and Assist Workstation Investment	\$ 751,900	3 Line 1*Line2
4 Toll and Assist Center Connecting Network Investment	\$ 958,110	4 \$3,987,889 Network Investment times (1- DA call allocator.)
5 Toll and Assist Network Software Upgrade for CLEC operator functions	\$ 1,000,000	5 Nortel Estimate for LET06 Software upgrade to accomodate CLEC support for Toll and Assist. Must be installed in 4 locations at a cost of \$500,000 per location.
6 LAN Hardware Investment	\$ 53,088	6 LAN Hardware and Installation times 3 locations factored to Toll and Assist (line 18)
7 LAN Software Investment	\$ 18,973	7 LAN Software and Installation times 3 locations factored to Toll and Assist (line 18)
8 Toll and Assist Investment	\$ 2,782,071	8 Sum of Lines 3,4,5,6,7
9 Annual Toll and Assistance Investment Deprecciation	\$ 556,414	9 Line 8/Line17
10 ***** Blank Line *****	** Blank Line **	10 ***** Blank Line *****
11 Toll and Assit CCS Worked	\$ 5,193,746	11 Operator Work Study
12 ***** Blank Line *****	** Blank Line **	12 ***** Blank Line *****
13 Directory Assistance Seizures	54,419,814	13 Annualized based on 20,922,120 Seizures through Aug./96. Provided by M. Anderson in memo dated 9/13/96
14 Toll Assist Seizures	17,209,230	14 Annualized based on 2,701,477 Seizures through Aug./96. Provided by M. Anderson in memo dated 9/13/96
15 Total DA/Operator Seizures	71,629,044	15 Sum Lines 13,14
16 Directory Assistance Seizure Ratio	0.75975	16 Line 13 / Line 15
17 Equipment Depreciation Life (years)	5	17 Estimated Equipment Life
18 Toll and Assist Seizure Factor	0.2403	18 (1--DA Factor)
19 Workstation Maintenance	\$ 31,674	19 Operator systems repair account 6220.114 (1995)
20 ***** Blank Line *****	** Blank Line **	20 ***** Blank Line *****
21 Rate of Return Factor	11.25%	21
22 ***** Blank Line *****	** Blank Line **	22 ***** Blank Line *****
23 ***** Blank Line *****	** Blank Line **	23 ***** Blank Line *****
24 ***** Blank Line *****	** Blank Line **	24 ***** Blank Line *****

25 Property Tax Factor	0.018800	25 Florida Specific
26 Income Tax Factor	0.3858	26 Florida Specific
27 ***** Blank Line *****	** Blank Line **	27 ***** Blank Line *****

Cost Analysis

28 Annual Toll and Assistance Investment Depreciation	\$ 556,414	28 Line 14
29 Workstation Maintenance	\$ 31,674	29 Line 19
30 ***** Blank Line *****	** Blank Line **	30 ***** Blank Line *****
31 ***** Blank Line *****	** Blank Line **	31 ***** Blank Line *****
32 ***** Blank Line *****	** Blank Line **	32 ***** Blank Line *****
33 ***** Blank Line *****	** Blank Line **	33 ***** Blank Line *****
34 Property Tax	\$ 52,303	34 Line 25 * Line 8
35 Average Annual Net Profit	\$ 156,491	35 See Return Calculation (Sum of Mid Year Undepreciated Plant * .1125 /5)
36 Income Tax	\$ 60,374	36 Line 36 * Line 26
37 ***** Blank Line *****	** Blank Line **	37 ***** Blank Line *****
38 Subtotal Investment Depretiation, Taxes, ROI and Maintenance	\$ 857,257	38 Sum of lines 28,29,30,31,32,33,34,35,36,37
38a Call Completion Validation Costs	\$ 225,818	38a General Ledger costs from account 6621.987 for validation from RBOCs and Sprint LTD
39 Toll and Assit Workforce and Supervision payroll and benefits Cost. (5 Year Average at 3.5 percent growth per year)	\$ 5,201,750	39 General Ledger for first 10 months of 1996 annualized, then grown for subsequent years at 3.5 percent and averaged.
40 Other Direct Costs	\$ 1,170,297	40 Sum of lines 38, 38a, 39 times .19604
41a Total Direct Costs	\$ 7,455,122	41a Sum of lines 38, 38a, 39 and 40
41b ***** Blank Line *****	** Blank Line **	41b ***** Blank Line *****
41c Common Cost	\$ 1,087,195	41c .145832 times line 41a
42 Total direct, other direct and common costs	\$ 8,542,317	42 Sum lines 41a, 41b, 41c
43 Cost for Toll and Local Assist per Intial Position Seizure	\$ 0.496	43 Line 42 divided by line 14
44 Cost per CCS for Toll and Local Assist.	\$ 1.645	44 Line 42 divided by line 11

Network Router

Cost			Maintenance	
	Hardware	Software	Hardware	Software
Network Router				
Hardware	\$ 43,342	\$ 10,080		\$ 1,770
Installation	\$ 30,313	\$ 16,243		
Total Network Gateway Costs	\$ 73,655	\$ 26,323		\$ 1,770
	\$ 99,979			

Return Calculation

		Yr 1	Yr2	Yr 3	Yr 4	Yr 5
Gross Investment	\$ 2,782,071	\$ 2,503,864	\$ 1,947,450	\$ 1,391,035	\$ 834,621	\$ 278,207
		\$ 281,685	\$ 219,088	\$ 156,491	\$ 93,895	\$ 31,298
5 year total Return	\$ 782,457					
Average Annual Return	\$ 156,491					

Operator Wages/ 5 Year Average

	1996	1997	1998	1999	2000	5 Year Average
\$	4,850,147	\$ 5,019,902	\$ 5,195,599	\$ 5,377,445	\$ 5,565,655	\$ 5,201,750

M.

Directory Assistance Operator Service

Company: Sprint Florida

Service: Directory Assistance Operator Service (Live)

Cost Methodology: TELRIC

Service Cost Type: Network Element

Service Description

The Directory Assistance Operator Service (Live) provides live assistance to a customer to obtain directory listing information and / or to complete a telephone call. The functionality includes a live operator, a data base of directory listing information, and the associated facilities and equipment necessary to access the data base and / or to complete the call. The service does not include customized branding. The calls must be delivered to an existing operator center consolidation network location.

Major Cost Areas and Sources

The major costs included the development of TELRIC for Directory Assistance Operator Service (Live) are:

- Operator labor
- Position equipment and local area networking
- Inter-operator work center networking
- Directory Assistance data base and associated maintenance

The sources for the TELRIC costs are Sprint Florida's general ledger, and vendor quotes and Sprint Florida's engineering estimates contained in Sprint Florida's project to implement a new directory assistance system.

The operator work force expenses are those directory assistance related expenses found in Sprint Florida's general ledger. The position equipment and local area networking, inter-operator work center networking, and directory assistance data base costs are those contained in the project to implement a new directory assistance system in Sprint Florida.

Cost Development Methodology (Attachment A)

The TELRIC cost development for Directory Assistance Operator Service (live) is comprised of six (6) steps:

1. Determine the Direct costs. These include the 1995 operator work force labor and payroll costs averaged over 5 years, and the hardware and software one-time and recurring costs associated with the new directory assistance system. The one-time costs are depreciated/amortized over a five (5) year economic life. A return on capital cost is calculated using a 11.25% after tax return, and taxes are included.
2. Determine Other Direct Costs. These include the fixture/furniture and building and network support costs. These costs are determined by a carry factor multiplied times Direct Identified Costs in 1. above. The factor was determined in the Summary of Indirect Investment Related and Common Expense Factors study for Sprint Florida for the 12 months ending December 1995.
3. Determine Common Cost. The sum of direct cost, and other direct cost is multiplied by the common cost factor of 14.5832 % to determine the allowed common cost.
4. Determine the Demand. The demand is the annual, 1995 position seizures.
5. Determine the live DA operator cost per initial seizure. The sum of direct identified, other direct, and common costs are divided by the demand to determine the live operator cost per initial position seizure.
6. Determine the Directory Assistance Operator Service (Live) Cost Per Initial Position Seizure. The live operator function cost per initial seizure determined in 1 (step 5) is added to the cost per initial position seizure for Directory Assistance Data Base Query Service to get the Directory Assistance Service (Live) price per initial position seizure. The result is:

● Live operator function cost per Initial Position Seizure	\$.335
+ Directory Assistance Data Base Query per Initial Position Seizure	\$.044
= Directory Assistance Service (Live) Per Initial Position Seizure	\$.379

**Sprint Florida
Cost Study for Directory Assistance Operator Service (Live)**

<u>Assumptions:</u>		<u>Data Source Reference</u>
1 Integrated Workstation (IWS) Per Unit	\$ 7,338	1 IBM Quote of \$6381 per Workstation with 15% UTF loadings equalling \$7338 Per position. cost for DA workstations.
2 Number Dir. Assistance Workstations	214	2 178 DA + 36 supervisor and training positions per Joe Thomas UTF Network Dept.
3 DA/Operator Workstation Investment	\$ 1,570,364	3 Line 1*Line2
4 DA/ Workcenter Connecting Network	\$ 3,029,779	4 \$3,987,889 total Network Investment for DA and Toll and Local Assist times DA factor on line 16.
5 ***** Blank Line *****	** Blank Line **	5 ***** Blank Line *****
6 LAN Hardware Investment	\$ 167,877	6 LAN Hardware and Installation times 3 locations times DA factor on line 16.
7 LAN Software Investment	\$ 59,997	7 LAN Software and Installation times 3 locations times DA factor on line 16.
8 Total DA Investment	\$ 4,828,017	8 Sum of Lines 4,5,6,7
9 Annual DA Equip / Net / Software Depreciation	\$ 965,603	9 Line 8 / Line 17.
10 ***** Blank Line *****	** Blank Line **	10 ***** Blank Line *****
11 ***** Blank Line *****	** Blank Line **	11 ***** Blank Line *****
12 ***** Blank Line *****	** Blank Line **	12 ***** Blank Line *****
13 Directory Assistance Seizures	54,419,814	13 Annualized based on 20,922,120 Seizures through Aug./96. Provided by M. Anderson in memo dated 9/13/96
14 Toll Assist Seizures	17,209,230	14 Annualized based on 2,701,477 Seizures through Aug./96. Provided by M. Anderson in memo dated 9/13/96
15 Total DA/Operator Seizures	71,629,044	15 Sum Lines 13,14
16 Directory Assistance Seizure Ratio	0.75975	16 Line 13 / Line 15
17 Equipment Depreciation Life (years)	5	17 Estimated Equipment Life
18 ***** Blank Line *****	** Blank Line **	18 ***** Blank Line *****
19 ***** Blank Line *****	** Blank Line **	19 ***** Blank Line *****
20 ***** Blank Line *****	** Blank Line **	20 ***** Blank Line *****
21 Rate of Return Factor	11.25%	21
22 Annual Workstation Software Maintenance	\$ 45,243	22 IBM Quote \$15,081 per location times 3 Locations.

23 Annual Local Area Network Maintenance	\$ 4,005	23 IBM Quote, \$1335 per location times 3 locations.
24 ***** Blank Line *****	** Blank Line **	24 ***** Blank Line *****
25 Property Tax Factor	0.018800	25
26 Income Tax Factor	0.3858	26
27 Total DA CCS Worked	14,998,827	27 Operator Cost Study line 4 Annualized

Cost Analysis

28 Annual DA Equip / Net / Software Depreciation	\$ 965,603	28 Line 9
29 ***** Blank Line *****	** Blank Line **	29 ***** Blank Line *****
30 ***** Blank Line *****	** Blank Line **	30 ***** Blank Line *****
31 Annual Local Area Network Maintenance	\$ 4,005	31 Line 23
32 Annual Workstation Software Maintenance	\$ 45,243	32 Line 22
33 ***** Blank Line *****	** Blank Line **	33 ***** Blank Line *****
34 DA Attributable Property Tax	\$ 90,767	34 Line 25 * Line 8
35 Average Annual Net Profit	\$ 271,576	35 See Return Calculation (Sum of Mid Year Undepreciated Plant * .1125 /5)
36 Income Tax	\$ 104,774	36 Line 36 * Line 26
37 ***** Blank Line *****	** Blank Line **	37 ***** Blank Line *****
38 Subtotal Investment Depreciation, Taxes, ROI and Maintenance	\$ 1,481,968	38 Sum of lines 28,29,30,31,32,33,34,35,36,37
39 DA Operator Wages and Payroll Costs	\$ 13,195,429	39 DA Workforce and Supervision Wages and Benefits From G.L.
39a Other Direct Operating Costs	\$ 2,733,078	39a Sum of lines 38, 39 times .186210
40 Total Direct Costs	\$ 15,928,508	40 Sum lines 39, 39a
41 ***** Blank Line *****	** Blank Line **	41 ***** Blank Line *****
42 Common Costs	\$ 2,322,886	42 .13994 times line 40
42a Total Direct, Other Direct and Common costs	\$ 18,251,394	42a Sum lines 40,41,42
43 DA Operator Cost per Initial Position Seizure	\$ 0.335	43 Line 42a divided by line 14
43a Cost for DA Database Access	\$ 0.044	43a From DA Database Access Study
43b <u>Price of DA Operator Service (Live) per Initial Position Seizure</u>	\$ 0.379	43b Sum lines 43, 43a
44 Cost per CCS	\$ 1.22	44 Line 42a divided by line 27.

Network Router

<u>Cost</u>			Maintenance	
	<u>Hardware</u>	<u>Software</u>	<u>Hardware</u>	<u>Software</u>
Network Router				
Hardware	\$ 43,342	\$ 10,080		\$ 1,770
Installation	\$ 30,313	\$ 16,243		
Total Network Gateway Costs	\$ 73,655	\$ 26,323		\$ 1,770

Return Calculation

	Yr 1	Yr2	Yr 3	Yr 4	Yr 5	
Gross Investment	\$ 4,828,017	\$ 4,345,216	\$ 3,379,612	\$ 2,414,009	\$ 1,448,405	\$ 482,802
Annual Return		\$ 488,837	\$ 380,206	\$ 271,576	\$ 162,946	\$ 54,315
5 year total Return	\$ 1,357,880					
Average Annual Return	\$ 271,576					

Operator Wages/ 5 Year Average

	1996	1997	1998	1999	2000	5 year Average
\$	12,303,509	\$ 12,734,132	\$ 13,179,826	\$ 13,641,120	\$ 14,118,560	\$ 13,195,429

N.

911 Tandem Port & Trunks

Company: Sprint Florida

Service: 911 Tandem Ports and Trunks

Service Cost Type: Network Element
Ports , TELRIC
Trunks

Service Description

Sprint, as the ILEC, may be the lead company providing 911 selective routing service to an emergency response agency. Where this is the case, the CLEC will need to provision, based on Florida Law, adequate trunks from the CLEC switch to the Sprint Florida selective routing tandem. The ports portion of this cost study is the cost for 911 tandem ports per DS0 or equivalent.

The Trunking from the CLEC switch to the Sprint Florida 911 tandem is provided based on transport pricing from the Interstate Access Tariff for Sprint Florida.

Major Cost Areas and Sources for Port Costs

The cost for the ports is predominately the installed cost of Subscriber Module Urban (SMU)Units on the DMS 911 Tandem. Because 911 is an emergency service these are redundant to accommodate a minimum of two diverse routes to the CLEC or other LEC end offices.

Cost Development Methodology

1. Identify Direct Costs The direct cost for NORTEL Subscriber Modules plus the cost of Engineering and installation was identified. The SMUs were depreciated over a 7 year life. An annual rate of return of 11.25 percent was assumed. Income and property taxes were calculated based on the 7 year average of net book value. Annual maintenance was assumed based on the switching maintenance factor of 3.34 percent of initial investment.

2. Identify Other Direct Costs Other Direct Costs were determined by multiplying the costs identified in step 1 above by the Indirect Investment Related and Common Cost Factors Study carry factor for Local Switching of 6.7523 %.

3. Identify Common Costs Common Costs were determined by multiplying the sum of the costs identified in step 1 and step 2 above by the Indirect Investment Related and Common Cost Factors Study Common Cost carry factor for Local Switching of 14.583 percent.

4. Determine Demand - Demand was determined based on the utilization of the capacity of 480 DS0 equivalents for the two SMUs times a utilization factor of 31 percent. The current fill is 100 of the 480 circuits for all central offices.

5. Determine the Cost per Port The Cost per DS0 equivalent 911 Tandem port was determined by multiplying the utilization factor times the capacity of the ports, then dividing the result into the Total Annual Costs for the port and dividing the result by 12.

The result is:

\$19.50 per DS0 equivalent

CLEC Unbundled Transport Pricing for 911

All trunk rates are the Sprint Florida rates for transport in the Sprint Local Telephone Companies Interstate Access Tariff.

911 Trunk Voice Grade Facility

- Channel mileage facility fixed \$ 30.00 Per Month
- Channel mileage facility per mile \$ 2.40 Per Month

911 Trunk on DS1 Facility

- Channel mileage facility fixed \$ 39.50 Per Month
- Channel mileage facility per mile \$ 17.00 Per Month

CLEC Cost Per 911 Tandem Port or DS0 Equivalent	
Sprint - Florida	
Investment	
2 NORTEL Subscriber Module Urban Units @ \$40,000 each.	\$ 80,000
Engineering and Installation	\$ 12,000
Total Investment	\$ 92,000
Costs	
Annual Depreciation @ 7 years	\$ 13,143
Average Annual Return @ 11.25 percent	\$ 5,914
Income Tax	\$ 2,282
Property Tax	\$ 141
Maintenance	\$ 3,073
Direct Costs	\$ 24,553
Other Direct Costs	\$ 6,212
Total Direct Costs	\$ 30,765
Common Costs	\$ 4,487
Total Costs	\$ 35,252
Demand	
Capacity	480
Utilization Factor	0.31
Number of DS0 ports Utilized	151
Annual Cost Recovery Requirement	\$ 234
Monthly Cost Recovery Requirement per DS0 or equivalent	19.50

O.

Common Cost Study

Summary of Other Direct Operating and Common Expense Factors

Sprint Florida - Combined
Twelve Months Ending December 1995
8400

	<u>Embedded Investment</u> (A)	<u>Maintenance Expense</u> (B)	<u>Maintenance Factor</u> (C)=B/A	<u>Other Direct Operating Expense</u> (D)	<u>Other Direct Operating Expense Factor</u> (E)=D/A	<u>Common Expense Factor</u> (F)
Loop - Cable & Wire	1,459,140,108	99,937,213	6.8490%	40,285,633	2.7609%	14.5832%
Loop - Circuit	300,455,299	10,127,933	3.3709%	13,250,352	4.4101%	14.5832%
Loop Total	1,759,595,407	110,065,146	6.2551%	53,535,985	3.0425%	14.5832%
Cross Connect - Circuit	2,246,758	75,735	3.3709%	129,571	5.7670%	14.5832%
Network Interface Device	9,215,012	885,897	9.6136%	986,783	10.7084%	14.5832%
Local Switching	681,984,645	10,560,599	1.5485%	46,049,379	6.7523%	14.5832%
Tandem Switching	11,912,257	184,462	1.5485%	727,500	6.1072%	14.5832%
Switching	693,896,901	10,745,061	1.5485%	46,776,879	6.7412%	14.5832%
Interoffice - Cable & Wire	96,672,275	4,374,827	4.5254%	6,393,917	6.6140%	14.5832%
Interoffice - Circuit	149,517,490	4,986,823	3.3353%	13,312,001	8.9033%	14.5832%
Interoffice Total	246,189,765	9,361,650	3.8026%	19,705,918	8.0044%	14.5832%
Digital Cross Connect	4,276,637	86,547	2.0237%	235,244	5.5007%	14.5832%
Signaling Links & STP Ports	22,590,869	416,448	1.8434%	1,310,001	5.7988%	14.5832%
	<u>Embedded Direct Cost</u>					
Call Related Databases	442,281	N/A	N/A	19,440	4.3954%	14.5832%
Service Management Systems	949,806	N/A	N/A	41,748	4.3954%	14.5832%
Operator Services & DA	20,502,192	N/A	N/A	3,817,709	18.6210%	14.5832%
Collocation	2,967,028	-	0.0000%	817,466	27.5517%	14.5832%
<u>Cable & Wire Detail</u>						
Poles	16,805,931	5,380,111	32.0132%		3.0003%	
Aerial Cable	66,212,574	5,114,707	7.7247%		3.0003%	
Aerial Drop	29,367,160	3,982,669	13.5616%		10.7084%	
Underground Cable	135,956,974	3,149,553	2.3166%		3.0003%	
Buried Cable	1,042,998,736	46,884,789	4.4952%		3.0003%	
Buried Drop	183,921,678	16,522,137	8.9832%		10.7084%	
Submarine Cable	1,362,398	5,184	0.3805%		3.0003%	
IntraBldg Network Cable	9,932,952	50,789	0.5113%		3.0003%	
Aerial Wire	-	406	0.0000%		3.0003%	
Conduit Systems	79,690,308	242,871	0.3048%		3.0003%	
Cable and Wire Facilities	1,566,248,711	81,333,214	5.1929%			
Digital Circuit	343,411,811	9,942,782	2.8953%		5.9031%	

P.

Annual Charge Factors

	Capital		
Income Tax Rate	38.57%	Cost	Wtd. Cost
Debt Cost	8.06%	4.95%	2.08%
Debt. Percent	42.00%		
Equity Cost	15.81%	15.81%	9.17%
Equity Percent	58.00%		
Capital Cost	12.56%		11.25%
Ad Valorem Tax Factor	1.88%		

SUMMARY ACF SCHEDULE

			(Economic Life)		For Use In SWIM/BCM	
<u>Plant</u>	<u>Maint</u>	<u>RESULTS</u> ACF <u>(A)</u>	<u>MACRS</u> <u>Life</u>	<u>ACF</u> <u>STUDY LIFE</u>	<u>Other Dir.</u> <u>Oper. Exp.</u> <u>(B)</u>	<u>Combined</u> <u>=(A+B)</u>
Switching	0.03339	24.42%	5	11	6.74%	31.16%
Circuit Digital	0.02540	27.38%	15	11	5.90%	33.28%
Buried Cable Metallic	0.05300	25.27%	15	18		
Aerial Cable Metallic	0.09136	30.85%	15	15		
Underground Fiber	0.00573	19.58%	15	20	6.61%	26.19%
Buried Fiber Drop	0.00524	19.53%	15	20		
Buried Metallic Drop	0.09998	30.27%	15	18		
Buried Fiber	0.00524	19.53%	15	20	6.61%	26.14%
Underground Metallic	0.03129	24.43%	15	15		
Aerial Cable Met. Drop	0.14019	36.06%	15	15		
Circuit Fiber	0.00792	25.49%	15	11	8.90%	34.39%
Aerial Fiber	0.00847	19.53%	15	20	6.61%	26.14%
Conduit	0.00380	17.25%	15	40	6.61%	23.87%
Poles	0.31463	55.41%	15	14	6.61%	62.03%

Combined OSP

		<u>1995 v/e bal.</u>	<u>% Distrib.</u> <u>(A)</u>	<u>ACF</u> <u>(B)</u>	<u>Wtd. Avg. Other Dir.</u> <u>=(A*B)</u> <u>(C)</u>	<u>Oper. Exp.</u> <u>(D)</u>	<u>Wtd. Avg. Total</u> <u>=(A*D)</u> <u>(E)</u>	<u>=(C+E)</u> <u>(F)</u>
Buried Cable Metallic	\$	969,688,147	62.39%	25.27%	15.77%	3.00%	1.87%	17.64%
Aerial Cable Metallic	\$	65,518,389	4.22%	30.85%	1.30%	3.00%	0.13%	1.43%
Aerial Cable Metallic Drop	\$	29,367,174	1.89%	36.06%	0.68%	10.71%	0.20%	0.88%
Underground Metallic	\$	119,283,606	7.67%	24.43%	1.88%	3.00%	0.23%	2.11%
Buried Metallic Drop	\$	183,921,705	11.83%	30.27%	3.58%	10.71%	1.27%	4.85%
Buried Fiber	\$	73,310,589	4.72%	19.53%	0.92%	3.00%	0.14%	1.06%
Aerial Fiber	\$	-	0.00%	19.53%	0.00%	3.00%	0.00%	0.00%
Underground Fiber	\$	16,673,356	1.07%	19.58%	0.21%	3.00%	0.03%	0.24%
Buried Fiber/Fiber Drop	\$	-	0.00%	19.53%	0.00%	3.00%	0.00%	0.00%
Conduit	\$	79,690,308	5.13%	17.25%	0.88%	3.00%	0.15%	1.04%
Poles	\$	<u>16,805,931</u>	<u>1.08%</u>	55.41%	<u>0.60%</u>	3.00%	<u>0.03%</u>	<u>0.63%</u>
Total	\$	1,554,259,205	100%		25.82%		4.06%	29.88%