

Sunshine Utilities

ORIGINAL

10230 E. Hwy. 25 • Belleview, FL 34420-5531
Office (352) 347-8228 • Fax (352) 347-6915

98 NOV 20 11 08 39
MAIL ROOM

NOVEMBER 18, 1998

DIVISION OF RECORDS AND REPORTING
FLORIDA PUBLIC SERVICE COMMISSION
2540 SHUMARD OAK BOULEVARD
TALLAHASSEE, FL 32399-0850

RE: DOCKET NO - 980543-WU

IN ACCORDANCE WITH MY CONVERSATION WITH JENNIFER BRUBAKER, I AM REQUESTING A CHANGE TO MY CORRESPONDENCE OF OCTOBER 15, 1998.

INSTEAD OF SEPARATING THE TWO APPLICATIONS FILED INTO SEPARATE DOCKET NUMBERS, WE WISH TO WITHDRAWAL OUR REQUEST TO AMEND THE CERTIFIED AREA ONLY AS IT PERTAINS TO "EVANS ACRES".

WE DO WISH THE REMAINING REQUEST TO STAND ON THE AMENDED TERRITORY AND HAVE ATTACHED THE REVISED PART V, TERRITORY DESCRIPTION AND MAP AS WELL AS A REVISED EXHIBIT 1B, WHICH IS PAGE 3.5 OF THE TARIFF.

THERE IS PROTEST MADE ON THE PORTION FOR EVANS ACRES, WHICH WILL BE NEW TERRITORY TO ADD. WE DO NOT WISH THIS ONE INCIDENT TO HOLD UP OUR AMENDED CERTIFICATED AREA.

ACK IF YOU NEED ADDITIONAL INFORMATION, PLEASE FEEL FREE TO CONTACT THE UNDERSIGNED.

AFA

APP VERY TRULY YOURS,

CAF

CMU *Pamela Christmas*

CTR PAMELA CHRISTMAS, MANAGER

EAG SUNSHINE UTILITIES

LEG 1 /pc

LIN 3 ENCLOSURES

OPC

RCH cc: JENNIFER BRUBAKER

SEC 1

WAS 1

OTH

DOCUMENT NUMBER-DATE
13118 NOV 20 98
FPSC-RECORDS/REPORTING

PART V TERRITORY DESCRIPTIONS AND MAPS

A) EXHIBIT 1

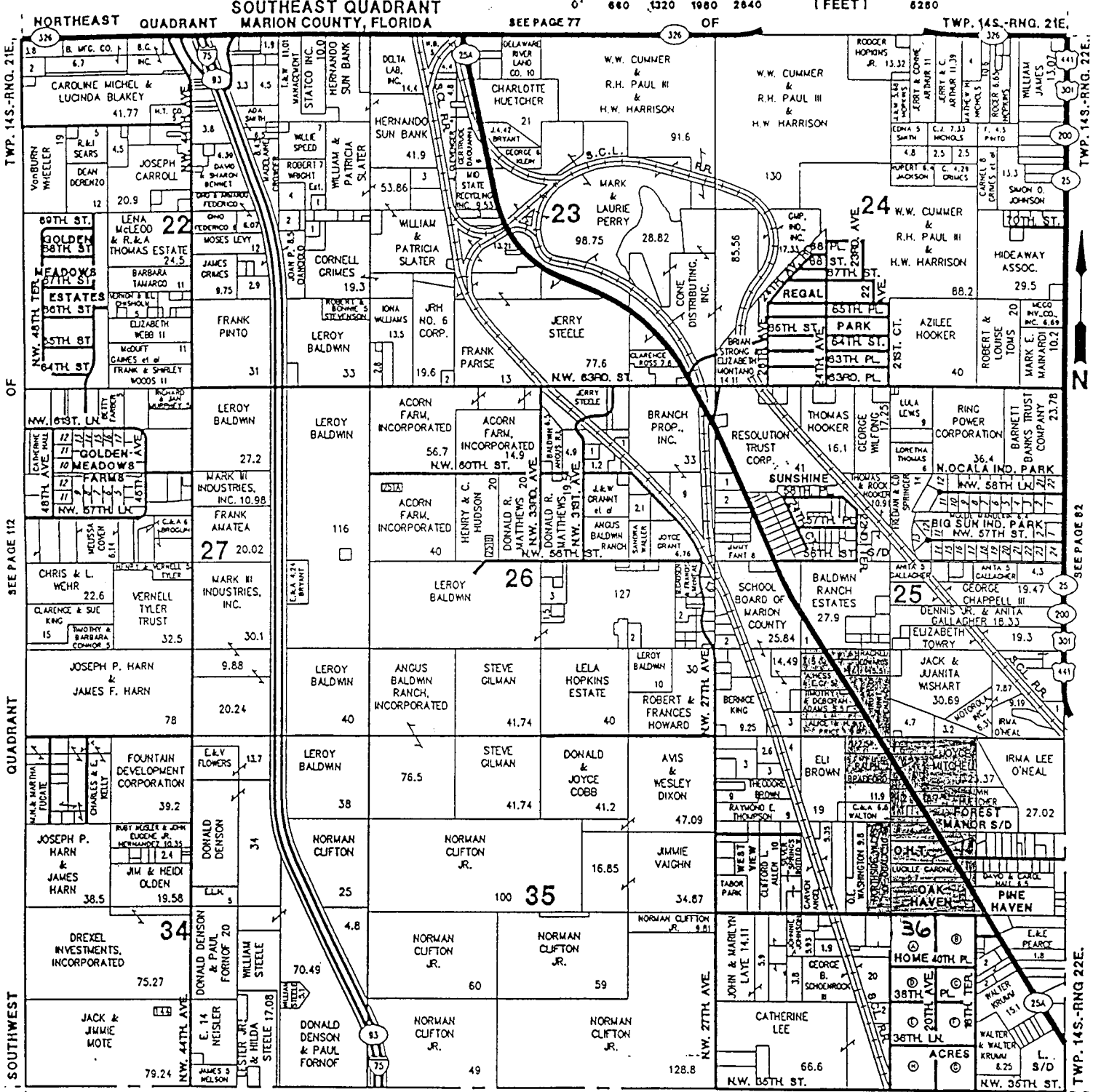
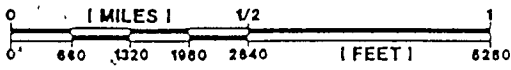
SECTION 25 TOWNSHIP 14 SOUTH RANGE 21 EAST

THE SE 1/4 OF THE SW 1/4 OF SAID SECTION 25

SECTION 36 TOWNSHIP 14 SOUTH RANGE 21 EAST

THE NE 1/4 OF THE NE 1/4 OF THE NW 1/4 AND THE W 1/2 OF THE
NE 1/4 AND THE E 1/2 OF THE E 1/2 OF THE NW 1/4 OF SAID SECTION
36

TWP. 14S.-RNG. 21E.



TWP. 14S.-RNG. 21E.

© 1994, FLORIDA PLATS

SEE PAGE 113

TWP. 15S.-RNG. 21E.

B)EXHIBIT_1 b_

SECOND REVISED SHEET NO. 3.5
CANCELS FIRST REVISED SHEET NO. 3.5

NAME OF COMPANY SUNSHINE UTILITIES OF CENTRAL FLORIDA, INC.
WATER TARIFF

(CONTINUED FROM SHEET NO. 3.4)

SECTION 32
OCKLAWAHA

The Southwest 1/4 of the Southeast 1/4 and the Southeast 1/4 of the Southwest 1/4 of said Section 32.

SECTION 32 TOWNSHIP 16 S RANGE 23 E
BELLEVIEW OAKS I & II

The East 1/2 of the Southeast 1/4 of the Northwest 1/4 and the West 1/2 of the Southwest 1/4 of the Northeast 1/4 and the South 1/2 of the Northwest 1/4 of the Northwest 1/4 of said Section 32.

AND

The West 1/2 of the Northwest 1/4 of the Northeast 1/4 lying South of U.S. 441 Alternate, except the West 210 feet and the West 1/2 of the Southwest 1/4 of the Northeast 1/4 and the East 1/2 of the Southeast 1/4 of the Northwest 1/4 except that part of County Road 25A.

SECTION 36 TOWNSHIP 14 S RANGE 21 E
OAKHAVEN

THE NE 1/4 of the NE 1/4 of the NW 1/4 of and the W 1/2 of the NE 1/4 and the E 1/2 of the E 1/2 of the NW 1/4 of said SECTION 36

SECTION 25 TOWNSHIP 14 SOUTH RANGE 21 EAST
OAKHAVEN

THE SE 1/4 of the SW 1/4 OF SECTION 25

JAMES H. HODGES
ISSUING OFFICER

PRESIDENT
OFFICER

(Continued to Sheet No. 3.6)

PART V TERRITORY DESCRIPTIONS AND MAPS

A) EXHIBIT 1

SECTION 25 TOWNSHIP 14 SOUTH RANGE 21 EAST

THE SE 1/4 OF THE SW 1/4 OF SAID SECTION 25

SECTION 36 TOWNSHIP 14 SOUTH RANGE 21 EAST

THE NE 1/4 OF THE NE 1/4 OF THE NW 1/4 AND THE W 1/2 OF THE
NE 1/4 AND THE E 1/2 OF THE E 1/2 OF THE NW 1/4 OF SAID SECTION
36

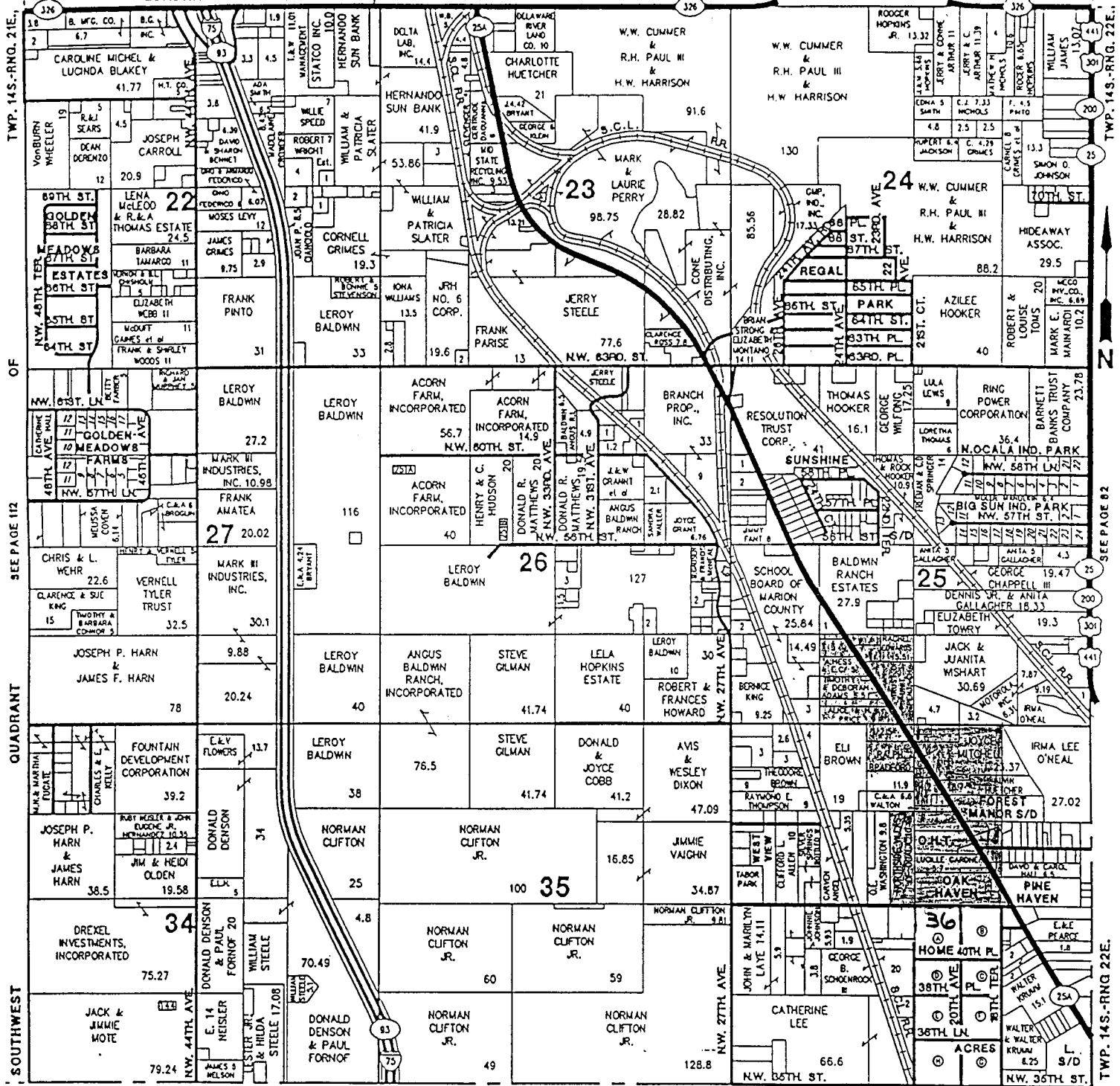
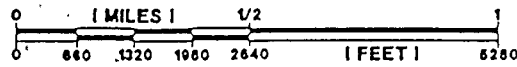
TWP. 14S.-RNG. 21E.

SOUTHEAST QUADRANT
MARION COUNTY, FLORIDA

SEE PAGE 77

OF

TWP. 14S.-RNG. 21E.



TWP. 15S.-RNG. 21E.

© 1994, FLORIDA PLATS

SEE PAGE 113

TWP. 15S.-RNG. 21E.

B)EXHIBIT_1 b_

SECOND REVISED SHEET NO. 3.5
CANCELS FIRST REVISED SHEET NO. 3.5

NAME OF COMPANY SUNSHINE UTILITIES OF CENTRAL FLORIDA, INC.
WATER TARIFF

(CONTINUED FROM SHEET NO. 3.4)

SECTION 32

OCKLAWAHA

The Southwest 1/4 of the Southeast 1/4 and the Southeast 1/4 of the Southwest 1/4 of said Section 32.

SECTION 32 TOWNSHIP 16 S RANGE 23 E

BELLEVIEW OAKS I & II

The East 1/2 of the Southeast 1/4 of the Northwest 1/4 and the West 1/2 of the Southwest 1/4 of the Northeast 1/4 and the South 1/2 of the Northwest 1/4 of the Northwest 1/4 of said Section 32.

AND

The West 1/2 of the Northwest 1/4 of the Northeast 1/4 lying South of U.S. 441 Alternate, except the West 210 feet and the West 1/2 of the Southwest 1/4 of the Northeast 1/4 and the East 1/2 of the Southeast 1/4 of the Northwest 1/4 except that part of County Road 25A.

SECTION 36 TOWNSHIP 14 S RANGE 21 E

OAKHAVEN

THE NE 1/4 of the NE 1/4 of the NW 1/4 of and the W 1/2 of the NE 1/4 and the E 1/2 of the E 1/2 of the NW 1/4 of said SECTION 36

SECTION 25 TOWNSHIP 14 SOUTH RANGE 21 EAST

OAKHAVEN

THE SE 1/4 of the SW 1/4 OF SECTION 25

JAMES H. HODGES
ISSUING OFFICER

PRESIDENT
OFFICER

(Continued to Sheet No. 3.6)

PART V TERRITORY DESCRIPTIONS AND MAPS

A) EXHIBIT 1

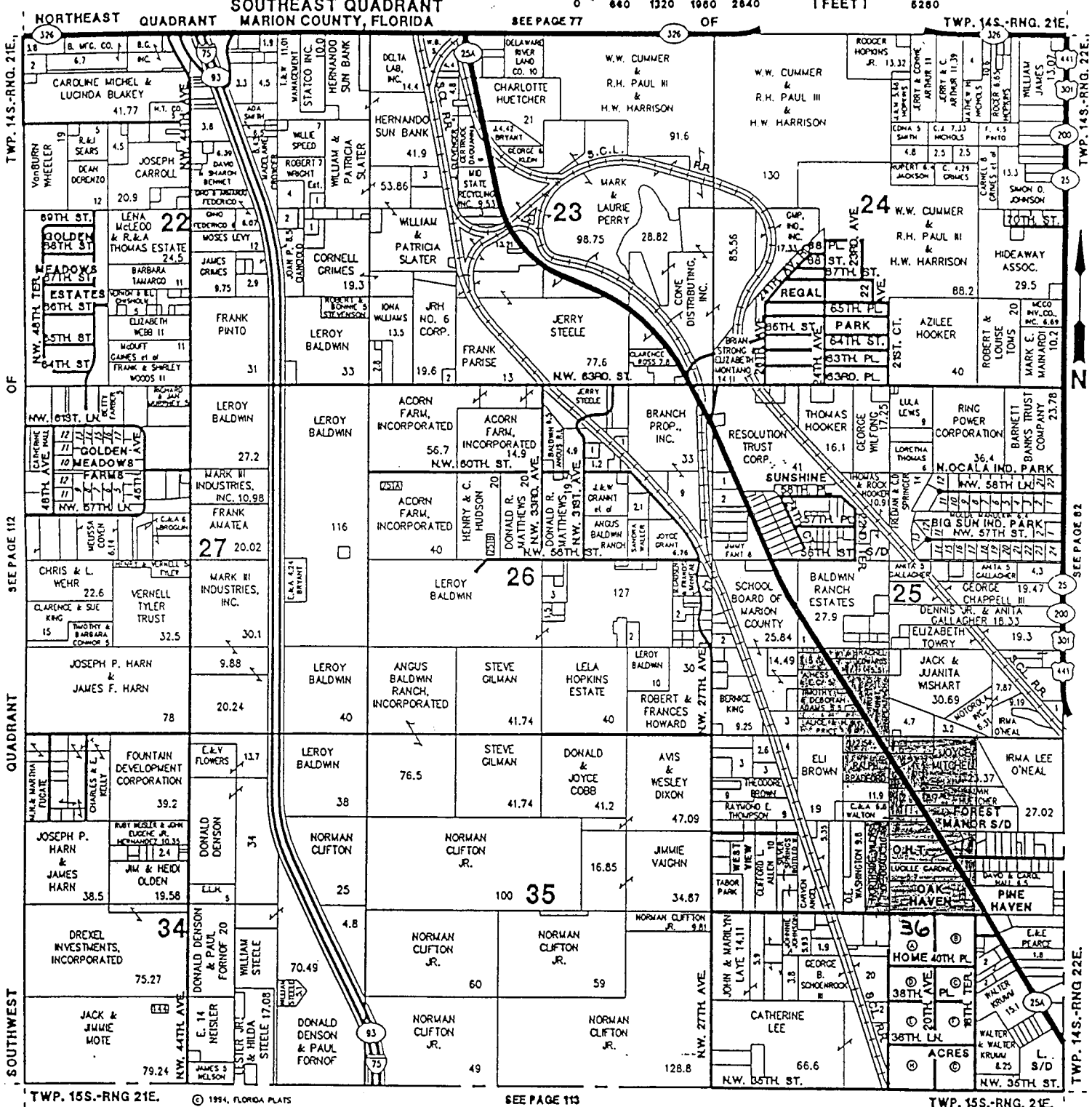
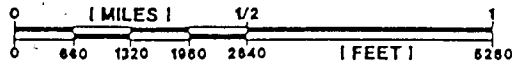
SECTION 25 TOWNSHIP 14 SOUTH RANGE 21 EAST

THE SE 1/4 OF THE SW 1/4 OF SAID SECTION 25

SECTION 36 TOWNSHIP 14 SOUTH RANGE 21 EAST

THE NE 1/4 OF THE NE 1/4 OF THE NW 1/4 AND THE W 1/2 OF THE
NE 1/4 AND THE E 1/2 OF THE E 1/2 OF THE NW 1/4 OF SAID SECTION
36

TWP. 14S.-RNG. 21E.



TWP. 15S.-RNG. 21E.

© 1994, FLORIDA PLATS

SEE PAGE 113

TWP. 15S.-RNG. 21E.

B)EXHIBIT_1 b_

SECOND REVISED SHEET NO. 3.5
CANCELS FIRST REVISED SHEET NO. 3.5

NAME OF COMPANY SUNSHINE UTILITIES OF CENTRAL FLORIDA, INC.
WATER TARIFF

(CONTINUED FROM SHEET NO. 3.4)

SECTION 32

OCKLAWAHA

The Southwest 1/4 of the Southeast 1/4 and the Southeast 1/4 of the Southwest 1/4 of said Section 32.

SECTION 32 TOWNSHIP 16 S RANGE 23 E

BELLEVIEW OAKS I & II

The East 1/2 of the Southeast 1/4 of the Northwest 1/4 and the West 1/2 of the Southwest 1/4 of the Northeast 1/4 and the South 1/2 of the Northwest 1/4 of the Northwest 1/4 of said Section 32.

AND

The West 1/2 of the Northwest 1/4 of the Northeast 1/4 lying South of U.S. 441 Alternate, except the West 210 feet and the West 1/2 of the Southwest 1/4 of the Northeast 1/4 and the East 1/2 of the Southeast 1/4 of the Northwest 1/4 except that part of County Road 25A.

SECTION 36 TOWNSHIP 14 S RANGE 21 E

OAKHAVEN

THE NE 1/4 of the NE 1/4 of the NW 1/4 of and the W 1/2 of the NE 1/4 and the E 1/2 of the E 1/2 of the NW 1/4 of said SECTION 36

SECTION 25 TOWNSHIP 14 SOUTH RANGE 21 EAST

OAKHAVEN

THE SE 1/4 of the SW 1/4 OF SECTION 25

JAMES H. HODGES
ISSUING OFFICER

PRESIDENT
OFFICER

(Continued to Sheet No. 3.6)

PART V TERRITORY DESCRIPTIONS AND MAPS

A) EXHIBIT 1

SECTION 25 TOWNSHIP 14 SOUTH RANGE 21 EAST

THE SE 1/4 OF THE SW 1/4 OF SAID SECTION 25

SECTION 36 TOWNSHIP 14 SOUTH RANGE 21 EAST

THE NE 1/4 OF THE NE 1/4 OF THE NW 1/4 AND THE W 1/2 OF THE
NE 1/4 AND THE E 1/2 OF THE E 1/2 OF THE NW 1/4 OF SAID SECTION
36

B)EXHIBIT_1 b_

SECOND REVISED SHEET NO. 3.5
CANCELS FIRST REVISED SHEET NO. 3.5

NAME OF COMPANY SUNSHINE UTILITIES OF CENTRAL FLORIDA, INC.
WATER TARIFF

(CONTINUED FROM SHEET NO. 3.4)

SECTION 32

OCKLAWAHA

The Southwest 1/4 of the Southeast 1/4 and the Southeast 1/4 of the Southwest 1/4 of said Section 32.

SECTION 32 TOWNSHIP 16 S RANGE 23 E

BELLEVIEW OAKS I & II

The East 1/2 of the Southeast 1/4 of the Northwest 1/4 and the West 1/2 of the Southwest 1/4 of the Northeast 1/4 and the South 1/2 of the Northwest 1/4 of the Northwest 1/4 of said Section 32.

AND

The West 1/2 of the Northwest 1/4 of the Northeast 1/4 lying South of U.S. 441 Alternate, except the West 210 feet and the West 1/2 of the Southwest 1/4 of the Northeast 1/4 and the East 1/2 of the Southeast 1/4 of the Northwest 1/4 except that part of County Road 25A.

SECTION 36 TOWNSHIP 14 S RANGE 21 E

OAKHAVEN

THE NE 1/4 of the NE 1/4 of the NW 1/4 of and the W 1/2 of the NE 1/4 and the E 1/2 of the E 1/2 of the NW 1/4 of said SECTION 36

SECTION 25 TOWNSHIP 14 SOUTH RANGE 21 EAST

OAKHAVEN

THE SE 1/4 of the SW 1/4 OF SECTION 25

JAMES H. HODGES
ISSUING OFFICER

PRESIDENT
OFFICER

(Continued to Sheet No. 3.6)