

REVISED

REDACTED

EXHIBIT B

DOCUMENT NUMBER-DATE
05984 AUG 22 =
FPSC-COMMISSION CLERK

06-045-4-1

REDACTED

(PBC)

CONFIDENTIAL

FPSC CAPACITY AUDIT
REQUEST NO. 1

2005 AUDIT REPORTS

A	B	C
25-01	[REDACTED]	DEC 22, 2004
25-03	[REDACTED]	FEB 14, 2005
25-04	[REDACTED]	MAR 7, 2005
25-05	[REDACTED]	MAR 11, 2005
25-06	[REDACTED]	MAR 14, 2005
25-07	[REDACTED]	MAR 21, 2005
25-08	[REDACTED]	MAR 31, 2005
25-10	[REDACTED]	MAR 31, 2005
25-11	[REDACTED]	APR 7, 2005
25-12	[REDACTED]	APR 8, 2005
25-13	[REDACTED]	APR 8, 2005
25-14	[REDACTED]	APR 8, 2005
25-15	[REDACTED]	APR 8, 2005
25-16	[REDACTED]	APR 12, 2005
25-17	[REDACTED]	APR 15, 2005
25-18	[REDACTED]	APR 15, 2005
25-20	[REDACTED]	MAY 25, 2005
25-21	[REDACTED]	MAY 26, 2005
25-22	[REDACTED]	JUN 21, 2005
25-23	[REDACTED]	JUN 23, 2005
25-24	[REDACTED]	JUN 27, 2005

1.

DOCUMENT NUMBER - DATE

05984 AUG 22 =

FPSC-COMMISSION CLERK

9 P1

FPSC CAPACITY AUDIT

REQUEST NO. 1 c

<i>A</i>	<i>B</i>	
25-25	[REDACTED]	JUN 28, 2005
25-26	[REDACTED]	JUN 30, 2005
25-27	[REDACTED]	AUG 17, 2005
25-28	[REDACTED]	SEP 6, 2005
25-29	[REDACTED]	SEP 13, 2005
25-30	[REDACTED]	SEP 14, 2005
25-31	[REDACTED]	SEP 14, 2005
25-32	[REDACTED]	SEP 21, 2005
25-33	[REDACTED]	SEP 26, 2005
25-34	[REDACTED]	SEP 26, 2005
25-35	[REDACTED]	SEP 20, 2005
25-36	[REDACTED]	OCT 3, 2005
25-38	[REDACTED]	OCT 20, 2005
25-39	[REDACTED]	OCT 20, 2005
25-40	[REDACTED]	OCT 21, 2005
25-42	[REDACTED]	NOV 8, 2005
25-43	[REDACTED]	NOV 11, 2005
25-44	[REDACTED]	NOV 14, 2005
25-45	[REDACTED]	NOV 14, 2005
25-46	[REDACTED]	NOV 16, 2005
25-49	[REDACTED]	DEC 1, 2005
25-55	[REDACTED]	DEC 7, 2005
25-57	[REDACTED]	DEC 12, 2005
25-59	[REDACTED]	DEC 16, 2005
25-61	[REDACTED]	DEC 16, 2005

CONFIDENTIAL

9/22

A	B	C
25-66	[REDACTED]	JUN 11, 2005
25-67	[REDACTED]	FEB 14, 2005
25-68	[REDACTED]	MAY 24, 2005
25-69	[REDACTED]	JUN 10, 2005
25-70	[REDACTED]	JUN 30, 2005
25-71	[REDACTED]	AUG 19, 2005
25-73	[REDACTED]	SEP 26, 2005
25-74	[REDACTED]	OCT 21, 2005
25-75	[REDACTED]	NOV 2, 2005
25-76	[REDACTED]	DEC 19, 2005

CONFIDENTIAL

923

2006 AUDIT REPORTS

<i>A</i>	<i>B</i>	<i>C</i>
26-01	[REDACTED]	JAN 10, 2006
26-02	[REDACTED]	JAN 27, 2006
26-03	[REDACTED]	JAN 30, 2006
25-04	[REDACTED]	JAN 30, 2006
26-07	[REDACTED]	JAN 31, 2006
26-08	[REDACTED]	FEB 13, 2006
26101	[REDACTED]	JAN 31, 2006

CONFIDENTIAL

994

PBC

CONFIDENTIAL

PBC

(1) ACCOUNT NUMBER	(2) BILLING MONTH	(3) RATE CODE	(4) BILLING DEMAND	(5) CAPACITY REVENUES	(6) CAPACITY FACTOR COLUMN (5) / COLUMN (4)
[REDACTED]	200508	54	1204	3178.56	2.64
[REDACTED]	200508	54	2932	7740.48	2.64
[REDACTED]	200508	54	679	1792.56	2.64
[REDACTED]	200508	54	2288	6040.32	2.64
[REDACTED]	200508	54	2745	7246.8	2.64
[REDACTED]	200508	54	3205	8461.2	2.64
[REDACTED]	200508	54	494	1304.16	2.64
[REDACTED]	200508	54	847	2236.08	2.64
[REDACTED]	200508	54	447	1180.08	2.64
[REDACTED]	200508	54	741	1956.24	2.64
[REDACTED]	200508	54	610	1610.4	2.64
[REDACTED]	200508	54	5666	14958.24	2.64
[REDACTED]	200508	54	480	1267.2	2.64
[REDACTED]	200508	54	1826	4820.64	2.64
[REDACTED]	200508	54	1071	2827.44	2.64
[REDACTED]	200508	54	3732	9852.48	2.64
[REDACTED]	200508	54	858	2265.12	2.64
[REDACTED]	200508	54	761	2009.04	2.64
[REDACTED]	200508	54	1355	3577.2	2.64
[REDACTED]	200508	54	638	1684.32	2.64
[REDACTED]	200508	54	2311	6101.04	2.64
[REDACTED]	200508	54	690	1821.6	2.64
[REDACTED]	200508	54	2411	6365.04	2.64
[REDACTED]	200508	54	1658	4377.12	2.64
[REDACTED]	200508	54	898	2370.72	2.64
[REDACTED]	200508	54	8448	22302.72	2.64
[REDACTED]	200508	54	515	1359.6	2.64
[REDACTED]	200508	54	1131	2985.84	2.64
[REDACTED]	200508	54	5717	15092.88	2.64
[REDACTED]	200508	54	688	1816.32	2.64
[REDACTED]	200508	54	1186	3131.04	2.64
[REDACTED]	200508	54	2235	5900.4	2.64
[REDACTED]	200508	54	1229	3244.56	2.64
[REDACTED]	200508	54	578	1525.92	2.64
[REDACTED]	200508	54	666	1758.24	2.64
[REDACTED]	200508	54	974	2571.36	2.64
[REDACTED]	200508	54	618	1631.52	2.64
[REDACTED]	200508	54	467	1232.88	2.64
[REDACTED]	200508	54	1539	4062.96	2.64
[REDACTED]	200508	54	6196	16357.44	2.64
[REDACTED]	200508	54	589	1554.96	2.64
[REDACTED]	200508	54	504	1330.56	2.64
[REDACTED]	200508	54	4636	12239.04	2.64
[REDACTED]	200508	54	808	2133.12	2.64
[REDACTED]	200508	54	377	995.28	2.64
[REDACTED]	200508	54	1860	4910.4	2.64
[REDACTED]	200508	54	856	2259.84	2.64
[REDACTED]	200508	54	1482	3912.48	2.64
[REDACTED]	200508	54	1261	3329.04	2.64
[REDACTED]	200508	54	490	1293.6	2.64

Capacity factors
traced to WP 41-2
2-1
Commission Order
PSC-04-1276-FOF ET

WP 41-2 P1
3-1

WP 41-2 P2
3-1

WP 41-2 P3
3-1

41-2 P1
3

CONFIDENTIAL ^{P13}

(1) ACCOUNT NUMBER	(2) BILLING MONTH	(3) RATE CODE	(4) BILLING DEMAND	(5) CAPACITY REVENUES	(6) CAPACITY FACTOR COLUMN (5) / COLUMN (4)
[REDACTED]	200508	55	22356	58125.6	2.60
	200508	55	18492	48079.2	2.60
	200508	55	14288	37148.8	2.60
	200508	55	27943	72651.8	2.60 H
	200508	55	7248	18844.8	2.60
	200508	55	5324	13842.4	2.60
	200508	55	10587	27526.2	2.60
	200508	55	11385	29601	2.60
	200508	55	37440	97344	2.60
	200508	55	14028	36472.8	2.60
	200508	55	20891	54316.6	2.60
	200508	55	6129	15935.4	2.60
	200508	55	5204	13530.4	2.60 H
	200508	55	9529	24775.4	2.60 H
	200508	55	10063	26163.8	2.60
	200508	55	3886	10103.8	2.60 H
	200508	55	8726	22687.6	2.60 H

41-2
3-1

41-2
3-1

41-2 P₂
3

CSLCT

CONFIDENTIAL

(1)	(2)	(3)	(4)	(5)	(6)
ACCOUNT NUMBER	BILLING MONTH	RATE CODE	BILLING DEMAND	CAPACITY REVENUES	CAPACITY FACTOR COLUMN (5) / COLUMN (4)
[REDACTED]	200508	56	331	847.44	2.64
[REDACTED]	200508	56	259	657.36	2.64
[REDACTED]	200508	56	288	733.92	2.64
[REDACTED]	200508	56	339	868.56	2.64
[REDACTED]	200508	56	326	834.24	2.64
[REDACTED]	200508	56	405	1042.8	2.64
[REDACTED]	200508	56	223	562.32	2.64
[REDACTED]	200508	56	80	184.8	2.64
[REDACTED]	200508	56	304	776.16	2.64
[REDACTED]	200508	56	259	657.36	2.64
[REDACTED]	200508	56	305	778.8	2.64
[REDACTED]	200508	56	282	718.08	2.64
[REDACTED]	200508	56	450	1161.6	2.64
[REDACTED]	200508	56	80	184.8	2.64
[REDACTED]	200508	56	236	596.64	2.64
[REDACTED]	200508	56	275	699.6	2.64
[REDACTED]	200508	56	333	852.72	2.64
[REDACTED]	200508	56	285	726	2.64
[REDACTED]	200508	56	267	678.48	2.64
[REDACTED]	200508	56	439	1132.56	2.64
[REDACTED]	200508	56	325	831.6	2.64
[REDACTED]	200508	56	128	311.52	2.64
[REDACTED]	200508	56	356	913.44	2.64
[REDACTED]	200508	56	200	501.6	2.64
[REDACTED]	200508	56	359	921.36	2.64
[REDACTED]	200508	56	224	564.96	2.64
[REDACTED]	200508	56	434	1119.36	2.64
[REDACTED]	200508	56	290	739.2	2.64
[REDACTED]	200508	56	461	1190.64	2.64
[REDACTED]	200508	56	301	768.24	2.64
[REDACTED]	200508	56	181	451.44	2.64
[REDACTED]	200508	56	246	623.04	2.64
[REDACTED]	200508	56	190	475.2	2.64
[REDACTED]	200508	56	332	850.08	2.64
[REDACTED]	200508	56	219	551.76	2.64
[REDACTED]	200508	56	279	710.16	2.64
[REDACTED]	200508	56	233	588.72	2.64
[REDACTED]	200508	56	325	831.6	2.64
[REDACTED]	200508	56	426	1098.24	2.64
[REDACTED]	200508	56	244	617.76	2.64
[REDACTED]	200508	56	385	990	2.64
[REDACTED]	200508	56	189	472.56	2.64
[REDACTED]	200508	56	385	990	2.64
[REDACTED]	200508	56	479	1238.16	2.64
[REDACTED]	200508	56	253	641.52	2.64
[REDACTED]	200508	56	171	425.04	2.64
[REDACTED]	200508	56	298	760.32	2.64
[REDACTED]	200508	56	224	564.96	2.64
[REDACTED]	200508	56	324	828.96	2.64

+ traced to
 WP 41-2 P2
 2-1

2.58 41-2
 3-1

2.52 41-2
 3-1

41-2 P3
 3

(1)	(2)	(3)	(4)	(5)	(6)
ACCOUNT NUMBER	BILLING MONTH	RATE CODE	BILLING DEMAND	CAPACITY REVENUES	CAPACITY FACTOR COLUMN (5) / COLUMN (4)

FPSC CAPACITY AUDIT REQUEST NO. 15 P15

CONFIDENTIAL

Rate traced to Wp 41-2 P1 2-1

Order PSC 04-1276 FOI/EI

200508	62	1236	3127.08	2.53
200508	62	432	1092.96	2.53
200508	62	643	1626.79	2.53
200508	62	533	1348.49	2.53
200508	62	578	1462.34	2.53
200508	62	578	1462.34	2.53
200508	62	636	1609.08	2.53
200508	62	485	1227.05	2.53
200508	62	738	1867.14	2.53
200508	62	804	2034.12	2.53
200508	62	622	1573.66	2.53
200508	62	530	1340.9	2.53
200508	62	617	1561.01	2.53
200508	62	632	1598.96	2.53
200508	62	575	1454.75	2.53
200508	62	504	1275.12	2.53
200508	62	976	2469.28	2.53
200508	62	728	1841.84	2.53
200508	62	588	1487.64	2.53
200508	62	512	1295.36	2.53
200508	62	448	1133.44	2.53
200508	62	504	1275.12	2.53
200508	62	478	1209.34	2.53
200508	62	967	2446.51	2.53
200508	62	809	2046.77	2.53
200508	62	649	1641.97	2.53
200508	62	655	1657.15	2.53
200508	62	504	1275.12	2.53
200508	62	883	2233.99	2.53
200508	62	943	2385.79	2.53
200508	62	1104	2793.12	2.53
200508	62	737	1864.61	2.53
200508	62	506	1280.18	2.53
200508	62	646	1634.38	2.53
200508	62	506	1280.18	2.53
200508	62	864	2185.92	2.53
200508	62	597	1510.41	2.53
200508	62	537	1358.61	2.53
200508	62	500	1265.00	2.53
200508	62	1334	3375.02	2.53
200508	62	1008	2550.24	2.53
200508	62	712	1801.36	2.53
200508	62	1597	4040.41	2.53
200508	62	691	1748.23	2.53
200508	62	507	1282.71	2.53
200508	62	684	1730.52	2.53
200508	62	643	1626.79	2.53
200508	62	1308	3309.24	2.53
200508	62	353	893.09	2.53
200508	62	583	1474.99	2.53

41-2
3-1

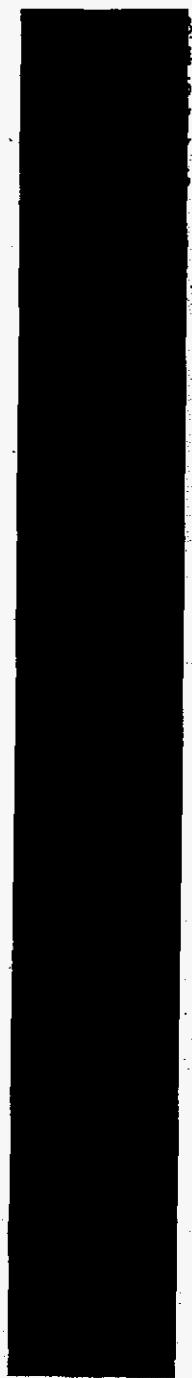
41-2
3-1

41-2 P4
3

Rate 62 = GSKD-1

(1) (2) (3) (4) (5) (6)
ACCOUNT BILLING RATE BILLING CAPACITY
NUMBER MONTH CODE DEMAND REVENUES
FACTOR
COLUMN (5) /
COLUMN (4)

CONFIDENTIAL



200508	63	2244	5565.12	2.48
200508	63	2117	5250.16	2.48
200508	63	2946	7306.08	2.48
200508	63	5568	13808.64	2.48
200508	63	5642	13992.16	2.48
200508	63	1889	4684.72	2.48
200508	63	3693	9158.64	2.48
200508	63	2239	5552.72	2.48
200508	63	1710	4240.8	2.48
200508	63	2530	6274.4	2.48
200508	63	2237	5547.76	2.48
200508	63	2278	5649.44	2.48
200508	63	2243	5562.64	2.48
200508	63	2151	5334.48	2.48
200508	63	7325	18166	2.48
200508	63	3739	9272.72	2.48
200508	63	2280	5654.4	2.48
200508	63	602	1492.96	2.48
200508	63	1443	3578.64	2.48
200508	63	2351	5830.48	2.48
200508	63	2164	5366.72	2.48
200508	63	3240	8035.2	2.48
200508	63	4564	11318.72	2.48
200508	63	2744	6805.12	2.48
200508	63	1966	4875.68	2.48
200508	63	2859	7090.32	2.48
200508	63	10438	25886.24	2.48
200508	63	471	1168.08	2.48
200508	63	9153	22899.44	2.48
200508	63	1995	4947.6	2.48
200508	63	2898	7187.04	2.48
200508	63	1635	4054.8	2.48
200508	63	2023	5017.04	2.48
200508	63	2175	5394	2.48
200508	63	2226	5520.48	2.48
200508	63	1493	3702.64	2.48
200508	63	3309	8206.32	2.48
200508	63	3254	8069.92	2.48
200508	63	2325	5766	2.48
200508	63	2747	6812.56	2.48
200508	63	1114	2762.72	2.48
200508	63	3125	7750	2.48
200508	63	9391	23289.68	2.48
200508	63	1915	4749.2	2.48
200508	63	3780	9374.4	2.48

41-2 P. 3-1
41-2 P. 3-1
41-2 P. 3-1
41-2 P. 3-1
late traced
to WP 41-2 P. 2-1
Order
PSC-04-1276-FOF-E

Rate 63 = GSLD-2

41-2 P. 3

(1) ACCOUNT NUMBER	(2) BILLING MONTH	(3) RATE CODE	(4) BILLING DEMAND	(5) CAPACITY REVENUES	(6) CAPACITY FACTOR COLUMN (5) / COLUMN (4)
[REDACTED]	200508	64	461	1166.33	2.53
[REDACTED]	200508	64	725	1834.25	2.53
[REDACTED]	200508	64	996	2519.88	2.53
[REDACTED]	200508	64	629	1591.37	2.53
[REDACTED]	200508	64	577	1459.81	2.53
[REDACTED]	200508	64	103	260.59	2.53
[REDACTED]	200508	64	636	1609.08	2.53
[REDACTED]	200508	64	420	1062.6	2.53
[REDACTED]	200508	64	925	2340.25	2.53
[REDACTED]	200508	64	430	1087.9	2.53
[REDACTED]	200508	64	504	1275.12	2.53
[REDACTED]	200508	64	432	1092.96	2.53
[REDACTED]	200508	64	198	500.94	2.53
[REDACTED]	200508	64	161	407.33	2.53
[REDACTED]	200508	64	533	1348.49	2.53
[REDACTED]	200508	64	666	1684.98	2.53
[REDACTED]	200508	64	472	1194.16	2.53
[REDACTED]	200508	64	468	1184.04	2.53
[REDACTED]	200508	64	468	1184.04	2.53
[REDACTED]	200508	64	1665	4212.45	2.53
[REDACTED]	200508	64	374	946.22	2.53
[REDACTED]	200508	64	500	1265	2.53
[REDACTED]	200508	64	358	905.74	2.53
[REDACTED]	200508	64	500	1265	2.53
[REDACTED]	200508	64	44	111.32	2.53
[REDACTED]	200508	64	510	1290.3	2.53
[REDACTED]	200508	64	703	1778.59	2.53
[REDACTED]	200508	64	1829	4627.37	2.53
[REDACTED]	200508	64	500	1265	2.53
[REDACTED]	200508	64	424	1072.72	2.53
[REDACTED]	200508	64	478	1209.34	2.53
[REDACTED]	200508	64	772	1953.16	2.53
[REDACTED]	200508	64	36	91.08	2.53
[REDACTED]	200508	64	499	1262.47	2.53
[REDACTED]	200508	64	614	1553.42	2.53
[REDACTED]	200508	64	500	1265	2.53
[REDACTED]	200508	64	473	1196.69	2.53
[REDACTED]	200508	64	569	1439.57	2.53
[REDACTED]	200508	64	615	1555.95	2.53
[REDACTED]	200508	64	580	1467.4	2.53
[REDACTED]	200508	64	574	1452.22	2.53
[REDACTED]	200508	64	732	1851.96	2.53
[REDACTED]	200508	64	427	1080.31	2.53
[REDACTED]	200508	64	1144	2894.32	2.53
[REDACTED]	200508	64	396	1001.88	2.53
[REDACTED]	200508	64	1336	3380.08	2.53
[REDACTED]	200508	64	498	1259.94	2.53
[REDACTED]	200508	64	492	1244.76	2.53
[REDACTED]	200508	64	533	1348.49	2.53

FPSC CAPACITY AUDIT
REQUEST NO. 15-117

CONFIDENTIAL

Traced to $\frac{41-2}{2-1} P_1$

Order PSC-04-1276-FOFEI

$\frac{41-2}{3-1} P_1 B$

$\frac{41-2}{3-1} P_1$

$\frac{41-2}{3} P_6$

Note 64 = GSLOT-1

(1) ACCOUNT NUMBER	(2) BILLING MONTH	(3) RATE CODE	(4) BILLING DEMAND	(5) CAPACITY REVENUES	(6) CAPACITY FACTOR COLUMN (5) / COLUMN (4)	FPSC CAPACITY AUDIT REQUEST NO. <u>15,118</u>
[REDACTED]	200508	65	2148	5327.04	2.48 4	Traced to Order PSC 04-1276 FJFE <u>WP 41-2 P1</u> 2-1
[REDACTED]	200508	65	2236	5545.28	2.48 4	
[REDACTED]	200508	65	3210	7960.8	2.48 4	
[REDACTED]	200508	65	402	996.96	2.48	
[REDACTED]	200508	65	2139	5304.72	2.48	
[REDACTED]	200508	65	2339	5800.72	2.48	
[REDACTED]	200508	65	357	885.36	2.48	
[REDACTED]	200508	65	2103	5215.44	2.48	
[REDACTED]	200508	65	2180	5406.4	2.48	
[REDACTED]	200508	65	2208	5475.84	2.48	
[REDACTED]	200508	65	2734	6780.32	2.48	
[REDACTED]	200508	65	3401	8434.48	2.48	
[REDACTED]	200508	65	2686	6661.28	2.48	
[REDACTED]	200508	65	2859	7090.32	2.48	
[REDACTED]	200508	65	4644	11517.12	2.48	
[REDACTED]	200508	65	2204	5465.92	2.48	
[REDACTED]	200508	65	2672	6626.56	2.48	
[REDACTED]	200508	65	3292	8164.16	2.48	
[REDACTED]	200508	65	5089	12620.72	2.48	
[REDACTED]	200508	65	4742	11760.16	2.48	
[REDACTED]	200508	65	3825	9486	2.48	
[REDACTED]	200508	65	4633	11489.84	2.48	
[REDACTED]	200508	65	1984	4920.32	2.48 4	
[REDACTED]	200508	65	2339	5800.72	2.48 4	
[REDACTED]	200508	65	2085	5170.8	2.48 4	
[REDACTED]	200508	65	2030	5034.4	2.48	
[REDACTED]	200508	65	2552	6328.96	2.48	
[REDACTED]	200508	65	3456	8570.88	2.48	
[REDACTED]	200508	65	2196	5446.08	2.48	
[REDACTED]	200508	65	2140	5307.2	2.48	
[REDACTED]	200508	65	2436	6041.28	2.48	
[REDACTED]	200508	65	2164	5366.72	2.48	
[REDACTED]	200508	65	1984	4920.32	2.48	
[REDACTED]	200508	65	2137	5299.76	2.48	
[REDACTED]	200508	65	2121	5260.08	2.48	
[REDACTED]	200508	65	2196	5446.08	2.48	
[REDACTED]	200508	65	3220	7985.6	2.48	
[REDACTED]	200508	65	2030	5034.4	2.48	
[REDACTED]	200508	65	2109	5230.32	2.48	
[REDACTED]	200508	65	3739	9272.72	2.48	
[REDACTED]	200508	65	3615	8965.2	2.48	
[REDACTED]	200508	65	2668	6616.64	2.48	
[REDACTED]	200508	65	87	215.76	2.48	
[REDACTED]	200508	65	1869	4635.12	2.48	
[REDACTED]	200508	65	4982	12355.36	2.48	
[REDACTED]	200508	65	100	248	2.48	
[REDACTED]	200508	65	497	1232.56	2.48	
[REDACTED]	200508	65	3596	8918.08	2.48	
[REDACTED]	200508	65	1871	4640.08	2.48	
[REDACTED]	200508	65	3287	8151.76	2.48	
[REDACTED]	200508	65	2022	7246.56	2.48	

CONFIDENTIAL


Traced to
Order PSC 04-1276 FJFE
WP 41-2 P1
2-1

41-2/3-1 P15

41-2/3-1 P16

41-2/3-1 P17

41-2 P7
3

(1) ACCOUNT NUMBER	(2) BILLING MONTH	(3) RATE CODE	(4) BILLING DEMAND	(5) CAPACITY REVENUES	(6) CAPACITY FACTOR COLUMN (5) / COLUMN (4)
	200508	65	1561	3871.28	2.48
	200508	65	293	726.64	2.48
	200508	65	2177	5398.96	2.48
	200508	65	2213	5488.24	2.48
	200508	65	2136	5297.28	2.48
	200508	65	2740	6795.2	2.48
	200508	65	5169	12819.12	2.48
	200508	65	2077	5150.96	2.48
	200508	65	2127	5274.96	2.48
	200508	65	2381	5904.88	2.48
	200508	65	2505	6212.4	2.48
	200508	65	2374	5887.52	2.48 ✓
	200508	65	1575	3906	2.48
	200508	65	701	1738.48	2.48
200508	65	571	1416.08	2.48 ✓	

FPSC CAPACITY AUDIT
REQUEST NO. 15 ¹¹⁹

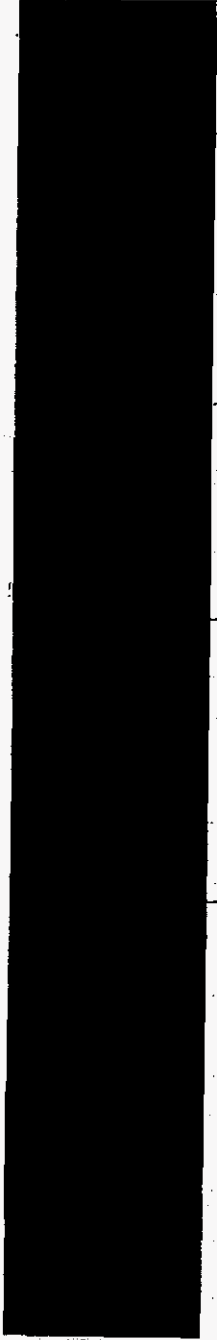
CONFIDENTIAL

41-2 P 8
3

FPSC CAPACITY AUDIT
REQUEST NO. 15 P20

(1)	(2)	(3)	(4)	(5)	(6)
ACCOUNT NUMBER	BILLING MONTH	RATE CODE	BILLING DEMAND	CAPACITY REVENUES	CAPACITY FACTOR COLUMN (5) / COLUMN (4)

CONFIDENTIAL



200508	70	41	77.81	1.897	2.51
200508	70	49	97.89	1.992	2.51
200508	70	29	47.69	1.614	2.51
200508	70	118	271.08		2.51
200508	70	480	1179.7		2.51
200508	70	18	20.08		2.51
200508	70	35	62.75		2.51
200508	70	23	32.63		2.51
200508	70	26	40.16		2.51
200508	70	62	130.52		2.51
200508	70	22	30.12		2.51
200508	70	12	5.02		2.51
200508	70	20	25.1		2.51
200508	70	101	228.41		2.51
200508	70	107	243.47		2.51
200508	70	104	235.94		2.51
200508	70	42	80.32		2.51
200508	70	60	125.5		2.51
200508	70	24	35.14		2.51
200508	70	24	35.14	1.44	2.51
200508	70	21	27.61		2.51
200508	70	23	32.63		2.51
200508	70	59	122.99		2.51
200508	70	182	431.72		2.51
200508	70	87	193.27		2.51
200508	70	169	399.09		2.51
200508	70	284	687.74		2.51
200508	70	44	85.34		2.51
200508	70	34	60.24	1.22	2.51
200508	70	428	1049.18		2.51
200508	70	47	92.87		2.51
200508	70	113	258.53		2.51
200508	70	38	70.28		2.51
200508	70	66	140.56		2.51
200508	70	34	60.24		2.51
200508	70	37	67.77		2.51
200508	70	50	100.4		2.51
200508	70	36	65.26		2.51
200508	70	143	333.83		2.51
200508	70	50	100.4		2.51
200508	70	41	77.81		2.51
200508	70	36	65.26		2.51
200508	70	19	22.59		2.51
200508	70	68	145.58	2.14	2.51

42.30 WP41-2
3-1 P18

41-2 P19
3-1 P18

81.46 41-2 P20
3-1

1.72 WP41-2 P21
3-1

This rate class is billed in excess
of 10KW

41-2 P9
3

(1)	(2)	(3)	(4)	(5)	(6)
ACCOUNT NUMBER	BILLING MONTH	RATE CODE	BILLING DEMAND	CAPACITY REVENUES	CAPACITY FACTOR COLUMN (5) / COLUMN (4)

CONFIDENTIAL

200508	72	72	47	92.87	2.51
200508	72	72	25	37.65	2.51
200508	72	72	183	434.23	2.51
200508	72	72	40	75.3	2.51
200508	72	72	27	42.67	2.51
200508	72	72	12	5.02	2.51
200508	72	72	21	27.61	2.51
200508	72	72	21	27.61	2.51
200508	72	72	40	75.3	2.51
200508	72	72	16	15.06	2.51
200508	72	72	22	30.12	2.51
200508	72	72	29	47.69	2.51
200508	72	72	78	170.68	2.51
200508	72	72	37	67.77	2.51
200508	72	72	32	55.22	2.51
200508	72	72	30	50.2	2.51
200508	72	72	112	256.02	2.51
200508	72	72	28	45.18	2.51
200508	72	72	50	100.4	2.51
200508	72	72	16	15.06	2.51
200508	72	72	145	338.85	2.51
200508	72	72	45	87.85	2.51
200508	72	72	24	35.14	2.51
200508	72	72	92	205.82	2.51
200508	72	72	24	35.14	2.51
200508	72	72	33	57.73	2.51
200508	72	72	28	45.18	2.51
200508	72	72	48	95.38	2.51
200508	72	72	26	40.16	2.51
200508	72	72	25	37.65	2.51
200508	72	72	21	27.61	2.51
200508	72	72	26	40.16	2.51
200508	72	72	22	30.12	2.51
200508	72	72	27	42.67	2.51
200508	72	72	32	55.22	2.51
200508	72	72	20	25.1	2.51
200508	72	72	28	45.18	2.51
200508	72	72	22	30.12	2.51
200508	72	72	391	956.31	2.51
200508	72	72	220	527.1	2.51
200508	72	72	295	715.35	2.51
200508	72	72	66	140.58	2.51
200508	72	72	17	17.57	2.51
200508	72	72	23	32.63	2.51
200508	72	72	186	441.76	2.51
200508	72	72	38	70.28	2.51
200508	72	72	103	233.43	2.51

.9412

41-2 P21
3-1

2.237

+ 2.24
41-2 P23
3-1

2.26

41-2 P10
3

(1)	(2)	(3)	(4)	(5)	(6)
ACCOUNT NUMBER	BILLING MONTH	RATE CODE	BILLING DEMAND	CAPACITY REVENUES	CAPACITY FACTOR COLUMN (5) / COLUMN (4)

CONFIDENTIAL



200508	73	500	1265	2.53
200508	73	765	1935.45	2.53
200508	73	1768	4473.04	2.53
200508	73	404	1022.12	2.53
200508	73	478	1209.34	2.53
200508	73	1301	3291.53	2.53
200508	73	657	1662.21	2.53
200508	73	500	1265	2.53
200508	73	362	915.86	2.53
200508	73	658	1664.74	2.53
200508	73	1621	4101.13	2.53
200508	73	1379	3488.87	2.53
200508	73	1682	4255.46	2.53
200508	73	957	2421.21	2.53
200508	73	475	1201.75	2.53
200508	73	930	2352.9	2.53
200508	73	515	1302.95	2.53
200508	73	797	2016.41	2.53
200508	73	938	2373.14	2.53
200508	73	1413	3574.89	2.53
200508	73	1062	2686.86	2.53
200508	73	750	1897.5	2.53
200508	73	906	2292.18	2.53
200508	73	1158	2929.74	2.53
200508	73	1349	3412.97	2.53
200508	73	793	2006.29	2.53
200508	73	533	1348.49	2.53
200508	73	1187	3003.11	2.53
200508	73	1562	3951.86	2.53
200508	73	922	2332.66	2.53
200508	73	624	1578.72	2.53
200508	73	647	1636.91	2.53
200508	73	581	1469.93	2.53
200508	73	644	1629.32	2.53
200508	73	503	1272.59	2.53
200508	73	481	1216.93	2.53
200508	73	822	2079.66	2.53
200508	73	469	1186.57	2.53
200508	73	637	1611.61	2.53
200508	73	893	2259.29	2.53
200508	73	598	1512.94	2.53
200508	73	769	1945.57	2.53
200508	73	500	1265	2.53
200508	73	910	2302.3	2.53
200508	73	1583	4004.99	2.53
200508	73	974	2464.22	2.53

$\frac{41-2}{3-1} P24$

$\frac{41-2}{3-1} P26$

$\frac{41-2}{3-1} P26$

$\frac{41-2}{3} P11$

(1) ACCOUNT NUMBER	(2) BILLING MONTH	(3) RATE CODE	(4) BILLING DEMAND	(5) CAPACITY REVENUES	(6) CAPACITY FACTOR COLUMN (5) / COLUMN (4)
[REDACTED]	200508	74	566	1431.98	2.53
[REDACTED]	200508	74	1933	4890.49	2.53
[REDACTED]	200508	74	745	1884.85	2.53
[REDACTED]	200508	74	516	1305.48	2.53
[REDACTED]	200508	74	989	2502.17	2.53
[REDACTED]	200508	74	952	2408.56	2.53
[REDACTED]	200508	74	734	1857.02	2.53
[REDACTED]	200508	74	890	2251.7	2.53
[REDACTED]	200508	74	704	1781.12	2.53
[REDACTED]	200508	74	678	1715.34	2.53
[REDACTED]	200508	74	953	2411.09	2.53
[REDACTED]	200508	74	560	1416.8	2.53
[REDACTED]	200508	74	1769	4475.57	2.53
[REDACTED]	200508	74	582	1472.46	2.53
[REDACTED]	200508	74	334	845.02	2.53
[REDACTED]	200508	74	356	900.68	2.53

CONFIDENTIAL

2.53

41-2 p 23
3-1

41-2 p 23
3

Bill BILLING HISTORY ELEC/OL BILL DETAIL 03/23/06 16:05:37
 [REDACTED] /31/91 2/054/ [REDACTED] ASM1
 [REDACTED] SPEC
 EDI CCIN
 SVC FROM 07/20/05 SVC TO 08/18/05 R/R/R 2 054 READ TYPE A

----- BILL DETAIL ----- DEMAND -----
 BASE AMT [REDACTED] RTP ACCESS CHG [REDACTED] ACTUAL BILLING ON-PEAK [REDACTED] 9
 CURT/CDR CR [REDACTED] RTP USAGE CHG [REDACTED] [REDACTED] (R) [REDACTED] 10
 TRANS CR [REDACTED] RTP ADMIN CHG [REDACTED] CURTAILMENT [REDACTED] 11
 LOAD CNTL CR [REDACTED] GROSS RCT TAX [REDACTED] MAXIMUM [REDACTED] 13
 ECC ADJ [REDACTED] FRANCHISE FEE [REDACTED] 14
 STRM SURCHG [REDACTED] MUNICIPAL TAX [REDACTED] 15
 ECRC CHG [REDACTED] FL SALES TAX [REDACTED] ----- THIS YEAR ----- 15
 FUEL CHG [REDACTED] ELECTRIC AMT [REDACTED] SVC DYS 29 BIL DYS 30 16
 CAPACITY CHG [REDACTED] BILL COMP AMT [REDACTED] LMIS CRDT DYS [REDACTED] 17
 COSP CHG [REDACTED] BB AMOUNT [REDACTED] KWH/DAY [REDACTED] 18
 GRN PWR CHG [REDACTED] BB DEFER BAL [REDACTED] KWH USAGE [REDACTED] 19
 FPL AMT [REDACTED] TOT FAC RNTL [REDACTED] CNST USE KWH [REDACTED] 20

NEXT TYPE A FIND GWA 90 21

MRDG HIST 15-COMPNT DTL 16-BUS BRKDWN 17-HI BILL 18-READ/VERIFY NEWS 2
 20-MKT SVC DTL 21-OL BRKDWN FACT 2

41-2
 3 pgs

[REDACTED] [REDACTED]

FPSC CAPACITY AUDIT 21
 REQUEST NO. 21 Item 21
 No. 2, p3 26

CONFIDENTIAL

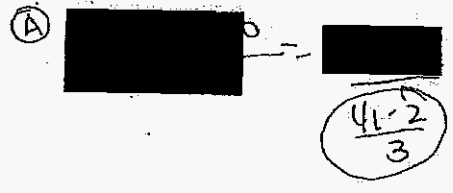
41-2 p
 3-6 p2

BILLING HISTORY		ELEC/OL BILL DETAIL		03/23/06 16:07:03		
[REDACTED]	[REDACTED]	12/21/92	3/055/	[REDACTED]	ASML	2
[REDACTED]	[REDACTED]	[REDACTED]	[REDACTED]	[REDACTED]	SPEC	3
[REDACTED]	[REDACTED]	[REDACTED]	[REDACTED]	[REDACTED]	COSP	4
[REDACTED]	[REDACTED]	[REDACTED]	[REDACTED]	[REDACTED]	CCIN	5
STARKE	[REDACTED]	M OLDBA:	[REDACTED]	[REDACTED]	PWQ	6
SVC FROM	07/25/05	SVC TO	08/23/05	R/R/R	3 055	7
----- BILL DETAIL -----						8
BASE AMT	[REDACTED]	RTP ACCESS CHG	[REDACTED]	ACTUAL BILLING ON-PEAK	[REDACTED]	9
CURT/CDR CR	[REDACTED]	RTP USAGE CHG	[REDACTED]	CURTAILMENT	[REDACTED]	10
TRANS CR	[REDACTED]	RTP ADMIN CHG	[REDACTED]	MAXIMUM	[REDACTED]	11
LOAD CNTL CR	[REDACTED]	GROSS RCT TAX	[REDACTED]			12
ECC ADJ	[REDACTED]	FRANCHISE FEE	[REDACTED]			13
STRM SURCHG	[REDACTED]	MUNICIPAL TAX	[REDACTED]			14
ECRC CHG	[REDACTED]	FL SALES TAX	[REDACTED]	----- THIS YEAR -----		15
FUEL CHG	[REDACTED]	ELECTRIC AMT	[REDACTED]	SVC DYS	29 BIL DYS	30
CAPACITY CHG	[REDACTED]	BILL COMP AMT	[REDACTED]	LMIS CRDT DYS		17
COSP CHG	[REDACTED]	BB AMOUNT	[REDACTED]	KWH/DAY	[REDACTED]	18
GRN PWR CHG	[REDACTED]	BB DEFER BAL	[REDACTED]	KWH USAGE	[REDACTED]	19
FPL AMT	[REDACTED]	TOT FAC RNTL	[REDACTED]	CNST USE KWH		20

NEXT TYPE A FIND GWA 90 21

MRDG HIST 15-COMPNT DTL 16-BUS BRKDWN 17-HI BILL 18-READ/VERIFY NEWS 2

20-MKT SVC DTL 21-OL BRKDWN FACT 2



FPSC CAPACITY AUDIT
 REQUEST NO. 21 Item
 No. 5, Pg

CONFIDENTIAL

41-2
 3-1
 P5

BILLING HISTORY ELEC/OL BILL DETAIL 03/24/06 08:30:28
PWB ACT 08/25/77 3/056/ ASM1

SVC FROM 07/07/05 SVC TO 08/05/05 R/R/R 3 056
BILL DETAIL DEMAND
READ TYPE A

BASE AMT	RTP ACCESS CHG	ACTUAL BILLING ON-PEAK
CURT/CDR CR	RTP USAGE CHG	CURTAILMENT
TRANS CR	RTP ADMIN CHG	MAXIMUM
LOAD CNTL CR	GROSS RCT TAX	
ECC ADJ	FRANCHISE FEE	
STRM SURCHG	MUNICIPAL TAX	
ECRC CHG	FL SALES TAX	THIS YEAR
FUEL CHG	ELECTRIC AMT	SVC DYS 29 BIL DYS 30
CAPACITY CHG	BILL COMP AMT	LMIS CRDT DYS
COSP CHG	BB AMOUNT	KWH/DAY
GRN PWR CHG	BB DEFER BAL	KWH USAGE
FPL AMT	TOT FAC RNTL	CNST USE KWH

NEXT TYPE A FIND

GWA 90

MRDG HIST 15-COMPNT DTL 16-BUS BRKDWN 17-HI BILL 18-READ/VERIFY NEWS
20-MKT SVC DTL 21-OL BRKDWN FACT

24
25

(A) [Redacted] = [Redacted]
 $\frac{41-2}{3} = 13$

FPSC CAPACITY AUDIT
REQUEST NO. 21 Item
No. 6, 17

CONFIDENTIAL

Items 6 and 7 are rate code 56
Rate Code 56 = Commercial Industrial
Load Control

CHC-16

41-2
3-1 P6

B.L.H.I BILLING HISTORY ELEC/OL BILL DETAIL 03/23/06 16:13:12

[REDACTED] PWB ACT 12/26/03 2/063/ [REDACTED] ASCA
[REDACTED] PH [REDACTED] M SPEC
[REDACTED] M OLDBA: [REDACTED] CCIN
SVC FROM 07/28/05 SVC TO 08/26/05 R/R/R 2 063 READ TYPE A

----- BILL DETAIL ----- DEMAND -----

BASE AMT	[REDACTED]	RTP ACCESS CHG	[REDACTED]	ACTUAL BILLING ON-PEAK	[REDACTED]
CURT/CDR CR	[REDACTED]	RTP USAGE CHG	[REDACTED]	CURTAILMENT	[REDACTED]
TRANS CR	[REDACTED]	RTP ADMIN CHG	[REDACTED]	MAXIMUM	[REDACTED]
LOAD CNTL CR	[REDACTED]	GROSS RCT TAX	[REDACTED]		
ECC ADJ	[REDACTED]	FRANCHISE FEE	[REDACTED]		
STRM SURCHG	[REDACTED]	MUNICIPAL TAX	[REDACTED]		
ECRC CHG	[REDACTED]	FL SALES TAX	[REDACTED]	----- THIS YEAR -----	
FUEL CHG	[REDACTED]	ELECTRIC AMT	[REDACTED]	SVC DYS 29 BIL DYS 30	
CAPACITY CHG	[REDACTED]	BILL COMP AMT	[REDACTED]	LMIS CRDT DYS	
COSP CHG	[REDACTED]	BB AMOUNT	[REDACTED]	KWH/DAY	[REDACTED]
GRN PWR CHG	[REDACTED]	BB DEFER BAL	[REDACTED]	KWH USAGE	[REDACTED]
FPL AMT	[REDACTED]	TOT FAC RNTL	[REDACTED]	CNST USE KWH	[REDACTED]

NEXT TYPE A FIND GWA 90

MRDG HIST 15-COMPNT DTL 16-BUS BRKDWN 17-HI BILL 18-READ/VERIFY NEWS
20-MKT SVC DTL 21-OL BRKDWN FACT

Ⓐ [REDACTED] = [REDACTED]
(41-2)
3

Items 10, 11, and 12 rate code
Rate 62 = General Service Large Demand (2000 Kw+)

FPSC CAPACITY AUDIT
REQUEST NO. 21 Item
No. 10, P11

CONFIDENTIAL

41-2
3-1 P10

BAMI BILLING HISTORY ELEC/OL BILL DETAIL 03/23/06 16:13:35
PWB ACT 03/05/01 2/063/ ASNA TRTO
P+ PH SPEC CCIN

SVC FROM 07/12/05 SVC TO 08/10/05 R/R/R 2 063 READ TYPE A

----- BILL DETAIL ----- DEMAND -----

BASE AMT	RTP ACCESS CHG	ACTUAL BILLING ON-PEAK	9
CURT/CDR CR	RTP USAGE CHG	②	10
TRANS CR	RTP ADMIN CHG	CURTAILMENT	11
LOAD CNTL CR	GROSS RCT TAX	MAXIMUM	12
ECC ADJ	FRANCHISE FEE		13
STRM SURCHG	MUNICIPAL TAX	----- THIS YEAR -----	14
ECRC CHG	FL SALES TAX	SVC DYS 29 BIL DYS 30	15
FUEL CHG	ELECTRIC AMT	LMIS CRDT DYS	16
CAPACITY CHG	BILL COMP AMT	KWH/DAY	17
COSP CHG	BB AMOUNT	KWH USAGE	18
GRN PWR CHG	BB DEFER BAL	CNST USE KWH	19
FPL AMT	TOT FAC RNTL		20

NEXT TYPE A FIND GWA 90 21

MRDG HIST 15-COMPNT DTL 16-BUS BRKDWN 17-HI BILL 18-READ/VERIFY NEWS 2
20-MKT SVC DTL 21-OL BRKDWN FACT 2

① [Redacted] = [Redacted]
41-2 P5
3

24
25
26

FPSC CAPACITY AUDIT
REQUEST NO. 21 Item
No. 11, P12

CONFIDENTIAL

41-2
3-1 P11

b...I BILLING HISTORY ELEC/OL BILL DETAIL 03/23/06 16:13:57
PWB ACT 05/24/00 2/063/ ASCA
PH () M SPEC

M OLDBA:
SVC FROM 07/28/05 SVC TO 08/26/05 R/R/R 2 063 READ TYPE A

BILL DETAIL		DEMAND	
BASE AMT	RTP ACCESS CHG	ACTUAL BILLING ON-PEAK	
CURT/CDR CR	RTP USAGE CHG		
TRANS CR	RTP ADMIN CHG	CURTAILMENT	
LOAD CNTL CR	GROSS RCT TAX	MAXIMUM	
ECC ADJ	FRANCHISE FEE		
STRM SURCHG	MUNICIPAL TAX		
ECRC' CHG	FL SALES TAX	----- THIS YEAR -----	
FUEL CHG	ELECTRIC AMT	SVC DYS 29 BIL DYS 30	
CAPACITY CHG	BILL COMP AMT	LMIS CRDT DYS	
COSP CHG	BB AMOUNT	KWH/DAY	
GRN PWR CHG	BB DEFER BAL	KWH USAGE	
FPL AMT	TOT FAC RNTL	CNST USE KWH	

NEXT TYPE A FIND GWA 90 2

MRDG HIST 15-COMPNT DTL 16-BUS BRKDOWN 17-HI BILL 18-READ/VERIFY NEWS 2
20-MKT SVC DTL 21-OL BRKDOWN FACT 2

(A) [redacted]
(B) [redacted]
41-2 P5
3

FPSC CAPACITY AUDIT
REQUEST NO. 21 Item
No. 12, P13

CONFIDENTIAL

41-2
2-1 P13

BILLING HISTORY		ELEC/OL BILL DETAIL		03/23/06 16:14:27	
[REDACTED]	PWB ACT	04/27/98	2/164/	[REDACTED]	ASMI
[REDACTED]	[REDACTED]	+ PH	[REDACTED]	[REDACTED]	SPEC
[REDACTED]	M OLDBA	[REDACTED]	[REDACTED]	[REDACTED]	CCIN
SVC FROM	07/29/05	SVC TO	08/29/05	R/R/R	2.064
BILL DETAIL				READ TYPE	A
BASE AMT	[REDACTED]	RTP ACCESS CHG	[REDACTED]	ACTUAL BILLING ON-PEAK	9
CURT/CDR CR	[REDACTED]	RTP USAGE CHG	[REDACTED]	1665	10
TRANS CR	[REDACTED]	RTP ADMIN CHG	[REDACTED]	CURTAILMENT	11
LOAD CNTL CR	[REDACTED]	GROSS RCT TAX	[REDACTED]	MAXIMUM	12
ECC ADJ	[REDACTED]	FRANCHISE FEE	[REDACTED]		13
STRM SURCHG	[REDACTED]	MUNICIPAL TAX	[REDACTED]		14
ECRC CHG	[REDACTED]	FL SALES TAX	[REDACTED]	----- THIS YEAR -----	15
FUEL CHG	[REDACTED]	ELECTRIC AMT	[REDACTED]	SVC DYS 31 BIL DYS 30	16
CAPACITY CHG	[REDACTED]	BILL COMP AMT	[REDACTED]	LMIS CRDT DYS	17
COSP CHG	[REDACTED]	BB AMOUNT	[REDACTED]	KWH/DAY	18
GRN PWR CHG	[REDACTED]	BB DEFER BAL	[REDACTED]	KWH USAGE	19
FPL AMT	[REDACTED]	TOT FAC RNTL	[REDACTED]	CNST USE KWH	20

NEXT TYPE A FIND GWA 90 2

MRDG HIST 15-COMPNT DTL 16-BUS BRKDWN 17-HI BILL 18-READ/VERIFY NEWS 2
 20-MKT SVC DTL 21-OL BRKDWN FACT 2

(A) [REDACTED] = [REDACTED]
 (B) [REDACTED] $\frac{41-2}{3} P_6$

24
25

Items 13 and 14 rate code 64
 Rate 64 = General Service Large Demand Time of Use (500-2000 kw).

FPSC CAPACITY AUDIT
 REQUEST NO. 21 Item
 No. 13, P14

CONFIDENTIAL

$\frac{41-2}{3-1} P_3$

B. I BILLING HISTORY. ELEC/OL BILL DETAIL 03/23/06 16:14:51

[REDACTED] ACT 02/21/05 2/164/ [REDACTED] ASCA
PH [REDACTED] B. SPEC EDI CCIN

SVC FROM 07/08/05 SVC TO 08/08/05 R/R/R 2 064 READ TYPE A

BILL DETAIL		DEMAND	
BASE AMT	[REDACTED]	RTP ACCESS CHG	[REDACTED]
CURT/CDR CR	[REDACTED]	RTP USAGE CHG	[REDACTED]
TRANS CR	[REDACTED]	RTP ADMIN CHG	[REDACTED]
LOAD CNTL CR	[REDACTED]	GROSS RCT TAX	[REDACTED]
ECC ADJ	[REDACTED]	FRANCHISE FEE	[REDACTED]
STRM SURCHG	[REDACTED]	MUNICIPAL TAX	[REDACTED]
ECRC CHG	[REDACTED]	FL SALES TAX	[REDACTED]
FUEL CHG	[REDACTED]	ELECTRIC AMT	[REDACTED]
CAPACITY CHG	[REDACTED]	BILL COMP AMT	[REDACTED]
COSP CHG	[REDACTED]	BB AMOUNT	[REDACTED]
GRN PWR CHG	[REDACTED]	BB DEFER BAL	[REDACTED]
FPL AMT	[REDACTED]	TOT FAC RNTL	[REDACTED]
		ACTUAL BILLING ON-PEAK	[REDACTED]
		CURTAILMENT	[REDACTED]
		MAXIMUM	[REDACTED]
		----- THIS YEAR -----	
		SVC DYS 31 BIL DYS 30	
		LMIS CRDT DYS	
		KWH/DAY	[REDACTED]
		KWH USAGE	[REDACTED]
		CNST USE KWH	[REDACTED]

NEXT TYPE A FIND GWA 90

MRDG HIST 15-COMPNT DTL 16-BUS BRKDWN 17-HI BILL 18-READ/VERIFY NEWS
20-MKT SVC DTL 21-OL BRKDWN FACT

(A) [REDACTED] = [REDACTED]
41-2
3

FPSC CAPACITY AUDIT
REQUEST NO. 21 Item
No. 14, P15

CONFIDENTIAL

41-2
3-1 P. P14

BLHI BILLING HISTORY ELEC/OL BILL DETAIL 03/24/06 08:44:15
 ACT 08/16/04 2/065/ PH M SPEC EDI CCIN
 M OLDBA:
 SVC FROM 07/29/05 SVC TO 08/29/05 R/R/R 2 065 READ TYPE A

----- BILL DETAIL ----- DEMAND -----
 BASE AMT RTP ACCESS CHG ACTUAL BILLING ON-PEAK
 CURT/CDR CR RTP USAGE CHG CURTAILMENT
 TRANS CR RTP ADMIN CHG MAXIMUM
 LOAD CNTL CR GROSS RCT TAX
 ECC ADJ FRANCHISE FEE
 STRM SURCHG MUNICIPAL TAX
 ECRC CHG FL SALES TAX
 FUEL CHG ELECTRIC AMT
 CAPACITY CHG BILL COMP AMT
 COSP CHG BB AMOUNT
 GRN PWR CHG BB DEFER BAL
 FPL AMT TOT FAC RNTL

NEXT TYPE A FIND GWA 90
 1-MRDG HIST 15-COMPNT DTL 16-BUS BRKDWN 17-HI BILL 18-READ/VERIFY NEWS
 20-MKT SVC DTL 21-OL BRKDWN FACT

[Redacted] (41-2) P7

FPSC CAPACITY AUDIT 21
 REQUEST NO. 21 Item 25
 No. 15, P16

CONFIDENTIAL

Items 15-17
 Rate Code 65 = General Service Large Demand
 Time of Use (2000 kw+)

41-2 P15
 3-1

BIHI BILLING HISTORY ELEC/OL BILL DETAIL 03/23/06 16:18:03

12/29/99 2/065/ [REDACTED] ASCA

PH [REDACTED] M SPEC

M OLDBA: [REDACTED]

SVC FROM 07/28/05 SVC TO 08/26/05 R/R/R 2 065 READ TYPE A

BILL DETAIL

DEMAND

BASE AMT	[REDACTED]	RTP ACCESS CHG	[REDACTED]	ACTUAL BILLING ON-PEAK	9
CURT/CDR CR	[REDACTED]	RTP USAGE CHG	[REDACTED]	[REDACTED]	16
TRANS CR	[REDACTED]	RTP ADMIN CHG	[REDACTED]	CURTAILMENT	1
LOAD CNTL CR	[REDACTED]	GROSS RCT TAX	[REDACTED]	MAXIMUM	11
ECC ADJ	[REDACTED]	FRANCHISE FEE	[REDACTED]		12
STRM SURCHG	[REDACTED]	MUNICIPAL TAX	[REDACTED]		11
ECRC CHG	[REDACTED]	FL SALES TAX	[REDACTED]	----- THIS YEAR -----	13
FUEL CHG	[REDACTED]	ELECTRIC AMT	[REDACTED]	SVC DYS 29 BIL DYS 30	1
CAPACITY CHG	[REDACTED]	BILL COMP AMT	[REDACTED]	LMIS CRDT DYS	1
COSP CHG	[REDACTED]	BB AMOUNT	[REDACTED]	KWH/DAY	11
GRN PWR CHG	[REDACTED]	BB DEFER BAL	[REDACTED]	KWH USAGE	11
FPL AMT	[REDACTED]	TOT FAC RNTL	[REDACTED]	CNST USE KWH	2

NEXT TYPE A FIND

GWA 90 2

MRDG HIST 15-COMPT DTL 16-BUS BRKDN 17-HI BILL 18-READ/VERIFY NEWS 2
 20-MKT SVC DTL 21-OL BRKDN .FACT 2

(A) [REDACTED] [REDACTED]
 41-2 P7
 3-1

FPSC CAPACITY AUDIT 2
 REQUEST NO. 21 Item 2!
 No. 16, P17

CONFIDENTIAL

B...I BILLING HISTORY ELEC/OL BILL DETAIL 03/23/06 16:18:25
B ACT 09/26/79 3/065/9 [REDACTED] ASM1
PH [REDACTED] SPEC
[REDACTED] CCIN

SVC FROM 07/11/05 SVC TO 08/09/05 R/R/R 3 065 9 READ TYPE L

BILL DETAIL		DEMAND	
1 BASE AMT	[REDACTED]	RTP ACCESS CHG	[REDACTED]
0 CURT/CDR CR	[REDACTED]	RTP USAGE CHG	[REDACTED]
1 TRANS CR	[REDACTED]	RTP ADMIN CHG	[REDACTED]
2 LOAD CNTL CR	[REDACTED]	GROSS RCT TAX	[REDACTED]
3 ECC ADJ	[REDACTED]	FRANCHISE FEE	[REDACTED]
4 STRM SURCHG	[REDACTED]	MUNICIPAL TAX	[REDACTED]
5 ECRC CHG	[REDACTED]	FL SALES TAX	[REDACTED]
6 FUEL CHG	[REDACTED]	ELECTRIC AMT	[REDACTED]
7 CAPACITY CHG	[REDACTED]	BILL COMP AMT	[REDACTED]
8 COSP CHG	[REDACTED]	BB AMOUNT	[REDACTED]
9 GRN PWR CHG	[REDACTED]	BB DEFER BAL	[REDACTED]
0 FPL AMT	[REDACTED]	TOT FAC RNTL	[REDACTED]

4 NEXT TYPE A FIND GWA 90

15 MRDG HIST 15-COMPNT DTL 16-BUS BRKDWN 17-HI BILL 18-READ/VERIFY NEWS
1320-MKT SVC DTL 21-OL BRKDWN FACT

14
15

(A) [REDACTED] = [REDACTED]
41-2 P4
3

FPSC CAPACITY AUDIT
REQUEST NO. 21 Item
No. 17, P8

CONFIDENTIAL

41-2 P17
3-1 P.

1 BHI BILLING HISTORY ELEC/OL BILL DETAIL 03/23/06 16:19:45

2 [REDACTED] 04/17/57 2/070/ [REDACTED]
3 [REDACTED] PH [REDACTED] SPEC
4 [REDACTED] M OLDBA: [REDACTED] CCIN
5 [REDACTED]
6 SVC FROM 07/28/05 SVC TO 08/26/05 R/R/R 2 070 READ TYPE A

----- BILL DETAIL ----- DEMAND -----

7 BASE AMT	[REDACTED]	RTP ACCESS CHG	[REDACTED]	ACTUAL BILLING ON-PEAK	[REDACTED]
8 CURT/CDR CR	[REDACTED]	RTP USAGE CHG	[REDACTED]	CURTAILMENT	[REDACTED]
9 TRANS CR	[REDACTED]	RTP ADMIN CHG	[REDACTED]	MAXIMUM	[REDACTED]
10 LOAD CNTL CR	[REDACTED]	GROSS RCT TAX	[REDACTED]		
11 ECC ADJ	[REDACTED]	FRANCHISE FEE	[REDACTED]		
12 STRM SURCHG	[REDACTED]	MUNICIPAL TAX	[REDACTED]		
13 ECRC CHG	[REDACTED]	FL SALES TAX	[REDACTED]	----- THIS YEAR -----	
14 FUEL CHG	[REDACTED]	ELECTRIC AMT	[REDACTED]	SVC DYS 28 BIL DYS 30	
15 CAPACITY CHG	[REDACTED]	BILL COMP AMT	[REDACTED]	LMIS CRDT DYS	
16 COSP CHG	[REDACTED]	BB AMOUNT	[REDACTED]	KWH/DAY	[REDACTED]
17 GRN PWR CHG	[REDACTED]	BB DEFER BAL	[REDACTED]	KWH USAGE	[REDACTED]
18 OFPL AMT	[REDACTED]	TOT FAC RNTL	[REDACTED]	CNST USE KWH	[REDACTED]

19 NEXT TYPE A FIND GWA 90

20 MRDG HIST 15-COMPNT DTL 16-BUS BRKDOWN 17-HI BILL 18-READ/VERIFY NEWS
21-20-MKT SVC DTL 21-OL BRKDOWN FACT

24 (A) [REDACTED] = [REDACTED]
25 [REDACTED]
41-2 Pg
3

FPSC CAPACITY AUDIT
REQUEST NO. 21 Item
No. 19, 20

CONFIDENTIAL

412
3-1 PIA

BILLING HISTORY ELEC/OL BILL DETAIL 03/23/06 16:20:07
 ACT 04/28/92 2/070/ [REDACTED] UCSN
 I+ PH [REDACTED] S SPEC
 POL CCIN
 SO
 M OLDBA: [REDACTED]
 SVC FROM 07/28/05 SVC TO 08/26/05 R/R/R 2 070 - READ TYPE A

BILL DETAIL		DEMAND	
BASE AMT	[REDACTED]	RTP ACCESS CHG	[REDACTED]
CURT/CDR CR	[REDACTED]	RTP USAGE CHG	[REDACTED]
TRANS CR	[REDACTED]	RTP ADMIN CHG	[REDACTED]
LOAD CNTL CR	[REDACTED]	GROSS RCT TAX	[REDACTED]
ECC ADJ	[REDACTED]	FRANCHISE FEE	[REDACTED]
STRM SURCHG	[REDACTED]	MUNICIPAL TAX	[REDACTED]
ECRC CHG	[REDACTED]	FL SALES TAX	[REDACTED]
FUEL CHG	[REDACTED]	ELECTRIC AMT	[REDACTED]
CAPACITY CHG	[REDACTED]	BILL COMP AMT	[REDACTED]
COSP CHG	[REDACTED]	BB AMOUNT	[REDACTED]
GRN PWR CHG	[REDACTED]	BB DEFER BAL	[REDACTED]
FPL AMT	[REDACTED]	TOT FAC RNTL	[REDACTED]
		ACTUAL BILLING ON-PEAK	[REDACTED]
		CURTAILMENT	[REDACTED]
		MAXIMUM	[REDACTED]
		----- THIS YEAR -----	
		SVC DYS 28 BIL DYS 30	
		LMIS CRDT DYS	
		KWH/DAY	[REDACTED]
		KWH USAGE	[REDACTED]
		CNST USE KWH	[REDACTED]

NEXT TYPE A FIND GWA 90
 MRDG HIST 15-COMPNT DTL 16-BUS BRKDOWN 17-HI BILL 18-READ/VERIFY NEWS
 20-MKT SVC DTL 21-OL BRKDOWN FACT

(A) [REDACTED] [REDACTED]
 46-2
 389

FPSC CAPACITY AUDIT
 REQUEST NO. 21 Item
 No. 20, P21

CONFIDENTIAL

41-2
 3-1 P20

BILLING HISTORY

ELEC/OL BILL DETAIL

03/23/06 16:20:43

04/98 2/070/

PH

SPEC ABP

CCIN

SVC FROM 07/28/05

SVC TO 08/26/05

R/R/R

2 070

READ TYPE A

BILL DETAIL

DEMAND

BASE AMT
CURT/CDR CR
TRANS CR
LOAD CNTL CR
ECC ADJ
STRM SURCHG
ECRC CHG
FUEL CHG
CAPACITY CHG
COSP CHG
GRN PWR CHG
FPL AMT

[REDACTED]

RTP ACCESS CHG
RTP USAGE CHG
RTP ADMIN CHG
GROSS RCT TAX
FRANCHISE FEE
MUNICIPAL TAX
FL SALES TAX
ELECTRIC AMT
BILL COMP AMT
BB AMOUNT
BB DEFER BAL
TOT FAC RNTL

[REDACTED]

ACTUAL BILLING ON-PEAK
CURTAILMENT
MAXIMUM
----- THIS YEAR -----
SVC DYS 29 BIL DYS 30
LMIS CRDT DYS
KWH/DAY
KWH USAGE
CNST USE KWH

4
7
8
9
10
11
12
13
14
15
16
17
18
19
20
21
22
23
24
25
26
27
28
29
30
31
32
33
34
35
36
37
38
39
40
41
42
43
44
45
46
47
48
49
50
51
52
53
54
55
56
57
58
59
60
61
62
63
64
65
66
67
68
69
70
71
72
73
74
75
76
77
78
79
80
81
82
83
84
85
86
87
88
89
90
91
92
93
94
95
96
97
98
99
100

NEXT TYPE A FIND

GWA 90

MRDG HIST 15-COMPNT DTL 16-BUS BRKDN 17-HI BILL 18-READ/VERIFY NEWS
20-MKT SVC DTL 21-OL BRKDN FACT

(A)

[REDACTED]

41-2 P9
3

FPSC CAPACITY AUDIT
REQUEST NO. 21 Item
No. 21, P22

21
25

CONFIDENTIAL

41-2
3-1

P21

bill BILLING HISTORY ELEC/OL BILL DETAIL 03/23/06 16:21:08

[REDACTED] /06/03 2/072/6 [REDACTED] PH [REDACTED] SPEC ABP POL CCIN

SVC FROM 07/28/05 SVC TO 08/26/05 R/R/R 2 072 6 READ TYPE A

BILL DETAIL		DEMAND	
BASE AMT	[REDACTED]	RTP ACCESS CHG	[REDACTED]
CURT/CDR CR	[REDACTED]	RTP USAGE CHG	[REDACTED]
TRANS CR	[REDACTED]	RTP ADMIN CHG	[REDACTED]
LOAD CNTL CR	[REDACTED]	GROSS RCT TAX	[REDACTED]
ECC ADJ	[REDACTED]	FRANCHISE FEE	[REDACTED]
STRM SURCHG	[REDACTED]	MUNICIPAL TAX	[REDACTED]
ECRC CHG	[REDACTED]	FL SALES TAX	[REDACTED]
FUEL CHG	[REDACTED]	ELECTRIC AMT	[REDACTED]
CAPACITY CHG	[REDACTED]	BILL COMP AMT	[REDACTED]
COSP CHG	[REDACTED]	BB AMOUNT	[REDACTED]
GRN PWR CHG	[REDACTED]	BB DEFER BAL	[REDACTED]
FPL AMT	[REDACTED]	TOT FAC RNTL	[REDACTED]
		ACTUAL BILLING ON-PEAK	[REDACTED]
		CURTAILMENT	[REDACTED]
		MAXIMUM	[REDACTED]
		----- THIS YEAR -----	
		SVC DYS 28 BIL DYS 30	
		LMIS CRDT DYS	
		KWH/DAY	[REDACTED]
		KWH USAGE	[REDACTED]
		CNST USE KWH	[REDACTED]

NEXT TYPE A FIND GWA 90

1-MRDG HIST 15-COMPNT DTL 16-BUS BRKDW 17-HI BILL 18-READ/VERIFY NEWS
20-MKT SVC DTL 21-OL BRKDW FACT

(A) [REDACTED] = [REDACTED] 41-2 P23
3

Rate 72 - items 22 + 23.
Rate code 72 = General Service Demand (21-499kw)

FPSC CAPACITY AUDIT
REQUEST NO. 21 Item
No. 22, P23

CONFIDENTIAL

41-2 P22
3-1 0

BILLING HISTORY ELEC/OL BILL DETAIL 03/23/06 16:21:26

LE ACT 07/26/01 2/072/ PH

CCIN

SVC FROM 07/28/05 SVC TO 08/26/05 R/R/R 2 072 READ TYPE A

BILL DETAIL DEMAND

BASE AMT	RTP ACCESS CHG	ACTUAL BILLING ON-PEAK
CURT/CDR CR	RTP USAGE CHG	CURTAINMENT
TRANS CR	RTP ADMIN CHG	MAXIMUM
LOAD CNTL CR	GROSS RCT TAX	
ECC ADJ	FRANCHISE FEE	
STRM SURCHG	MUNICIPAL TAX	
ECRC CHG	FL SALES TAX	----- THIS YEAR -----
FUEL CHG	ELECTRIC AMT	SVC DYS 28 BIL DYS 30
CAPACITY CHG	BILL COMP AMT	LMIS CRDT DYS
COSP CHG	BB AMOUNT	KWH/DAY
GRN PWR CHG	BB DEFER BAL	KWH USAGE
FPL AMT	TOT FAC RNTL	CNST USE KWH

NEXT TYPE A FIND GWA 90

MRDG HIST 15-COMPNT DTL 16-BUS BRKDWN 17-HI BILL 18-READ/VERIFY NEWS
20-MKT SVC DTL 21-OL BRKDWN FACT

41-2/3 P.21

FPSC CAPACITY AUDIT
REQUEST NO. 21 Item
No. 23, P.24

CONFIDENTIAL

41-2 P.23
3-1 P

BILL BILLING HISTORY ELEC/OL BILL DETAIL 03/23/06 16:29:47

[REDACTED] PWB ACT 09/22/76 3/073/ [REDACTED] ASM2
PH [REDACTED] S SPEC CCIN
M OLDBA: [REDACTED]
SVC FROM 07/11/05 SVC TO 08/09/05 R/R/R 3 073 READ TYPE A

BILL DETAIL

BASE AMT	[REDACTED]	RTP ACCESS CHG	[REDACTED]	ACTUAL BILLING ON-PEAK	9
CURT/CDR CR	[REDACTED]	RTP USAGE CHG	[REDACTED]	CURTAINMENT	11
TRANS CR	[REDACTED]	RTP ADMIN CHG	[REDACTED]	MAXIMUM	1
LOAD CNTL CR	[REDACTED]	GROSS RCT TAX	[REDACTED]		1
ECC ADJ	[REDACTED]	FRANCHISE FEE	[REDACTED]		11
STRM SURCHG	[REDACTED]	MUNICIPAL TAX	[REDACTED]		1
ECRC CHG	[REDACTED]	FL SALES TAX	[REDACTED]	----- THIS YEAR -----	11
FUEL CHG	[REDACTED]	ELECTRIC AMT	[REDACTED]	SVC DYS 29 BIL DYS 30	11
CAPACITY CHG	[REDACTED]	BILL COMP AMT	[REDACTED]	LMIS CRDT DYS	11
COSP CHG	[REDACTED]	BB AMOUNT	[REDACTED]	KWH/DAY	11
GRN PWR CHG	[REDACTED]	BB DEFER BAL	[REDACTED]	KWH USAGE	11
FPL AMT	[REDACTED]	TOT FAC RNTL	[REDACTED]	CNST USE KWH	21

NEXT TYPE A FIND GWA 90 2

MRDG HIST 15-COMPNT DTL 16-BUS BRKDOWN 17-HI BILL 18-READ/VERIFY NEWS 1
20-MKT SVC DTL 21-OL BRKDOWN FACT 2

(A) [REDACTED] [REDACTED]
41-2
3

FPSC CAPACITY AUDIT
REQUEST NO. 21 Item
No. 25, P26

CONFIDENTIAL

Date 73 = curtailable service

41-2
2-1 P. 25

B... BILLING HISTORY ELEC/OL BILL DETAIL 03/23/06 16:30:08
 ACT 03/25/03 2/073/ [REDACTED] ASMI
 PH [REDACTED] S SPEC CCIN
 M OLDBA: [REDACTED]
 SVC FROM 07/26/05 SVC TO 08/24/05 R/R/R 2 073 READ TYPE A

BILL DETAIL		DEMAND		
		ACTUAL BILLING ON-PEAK		
BASE AMT	[REDACTED]	[REDACTED]	[REDACTED]	10
CURT/CDR CR	[REDACTED]	CURTAILMENT	[REDACTED]	11
TRANS CR	[REDACTED]	MAXIMUM	[REDACTED]	12
LOAD CNTL CR	[REDACTED]			13
ECC ADJ	[REDACTED]			14
STRM SURCHG	[REDACTED]			15
ECRC CHG	[REDACTED]	----- THIS YEAR -----		15
FUEL CHG	[REDACTED]	SVC DYS 29 BIL DYS 30		16
CAPACITY CHG	[REDACTED]	LMIS CRDT DYS		17
COSP CHG	[REDACTED]	KWH/DAY	[REDACTED]	18
GRN PWR CHG	[REDACTED]	KWH USAGE	[REDACTED]	19
FPL AMT	[REDACTED]	CNST USE KWH		20

NEXT TYPE A FIND GWA 90 21
 MRDG HIST 15-COMPNT DTL 16-BUS BRKDOWN 17-HI BILL 18-READ/VERIFY NEWS 2;
 20-MKT SVC DTL 21-OL BRKDOWN FACT 2;

(A) [REDACTED] = [REDACTED]
 (B) [REDACTED] $\frac{41-2 P11}{3}$

Rate 73 = Curtailable Service

FPSC CAPACITY AUDIT 24
 REQUEST NO. 21 Item 25
 No. 24, P. 7

CONFIDENTIAL

41-2
 7-26
 P.

B. f BILLING HISTORY ELEC/OL BILL DETAIL 03/23/06 16:30:35

[REDACTED] PWB ACT 05/01/65 3/074/9 [REDACTED] ASCA
PH [REDACTED] SPEC
[REDACTED] M. OLDBA: [REDACTED] CCIN

SVC FROM 07/15/05 SVC TO 08/15/05 R/R/R 3 074 9 READ TYPE A

----- BILL DETAIL ----- DEMAND -----

BASE AMT	[REDACTED]	RTP ACCESS CHG	[REDACTED]	ACTUAL BILLING ON-PEAK	[REDACTED]
CURT/CDR CR	[REDACTED]	RTP USAGE CHG	[REDACTED]	CURTAINMENT	[REDACTED]
TRANS CR	[REDACTED]	RTP ADMIN CHG	[REDACTED]	MAXIMUM	[REDACTED]
LOAD CNTL CR	[REDACTED]	GROSS RCT TAX	[REDACTED]		
ECC ADJ	[REDACTED]	FRANCHISE FEE	[REDACTED]		
S'ERM SURCHG	[REDACTED]	MUNICIPAL TAX	[REDACTED]		
ECRC CHG	[REDACTED]	FL SALES TAX	[REDACTED]	----- THIS YEAR -----	
FUEL CHG	[REDACTED]	ELECTRIC AMT	[REDACTED]	SVC DYS 31 BIL DYS 30	
CAPACITY CHG	(A) [REDACTED]	BILL COMP AMT	[REDACTED]	LMIS CRDT DYS	
COSP CHG	[REDACTED]	BB AMOUNT	[REDACTED]	KWH/DAY	[REDACTED]
GRN PWR CHG	[REDACTED]	BB DEFER BAL	[REDACTED]	KWH USAGE	[REDACTED]
FPL AMT	[REDACTED]	TOT FAC RNTL	[REDACTED]	CONST USE KWH	[REDACTED]

NEXT TYPE A FIND GWA 90

MRDG HIST 15-COMPNT DTL 16-BUS BRKDWN 17-HI BILL 18-READ/VERIFY NEWS
20-MKT SVC DTL 21-OL BRKDWN FACT

(A) [REDACTED] [REDACTED]
462 P12
B

FPSC CAPACITY AUDIT 24
REQUEST NO. 21 Item 25
No. 27, P28

CONFIDENTIAL

*Rate 24 = Curtailable Service
Time of Use (500 - 2000 kW)*

CONFIDENTIAL

2 IHI BILLING HISTORY ELEC/OL BILL DETAIL 03/16/06 13:46:05
 3 [REDACTED] ACT 08/19/02 2/851/ [REDACTED] ASCA TRTO
 4 PH [REDACTED] SPEC
 5
 6 M OLDBA: [REDACTED] CCI
 7 SVC FROM 07/07/05 SVC TO 08/05/05 R/R/R 2 (851) READ TYPE A
 8 ----- BILL DETAIL ----- DEMAND -----
 9 BASE AMT [REDACTED] RTP ACCESS CHG [REDACTED] ACTUAL BILLING ON-PEAK
 10 CURT/CDR CR [REDACTED] RTP USAGE CHG [REDACTED]
 11 TRANS CR [REDACTED] RTP ADMIN CHG [REDACTED] CURTAILMENT
 12 LOAD CNTL CR [REDACTED] GROSS RCT TAX [REDACTED] MAXIMUM
 13 ECC ADJ [REDACTED] FRANCHISE FEE [REDACTED]
 14 STRM SURCHG [REDACTED] MUNICIPAL TAX [REDACTED]
 15 ECRC CHG [REDACTED] FL SALES TAX [REDACTED] ----- THIS YEAR -----
 16 FUEL CHG [REDACTED] ELECTRIC AMT [REDACTED] SVC DYS 29 BIL DYS 3
 17 CAPACITY CHG [REDACTED] BILL COMP AMT [REDACTED] LMIS CRDT DYS
 18 COSP CHG [REDACTED] BB AMOUNT [REDACTED] KWH/DAY
 19 GRN PWR CHG [REDACTED] BB DEFER BAL [REDACTED] KWH USAGE
 20 FPL AMT [REDACTED] TOT FAC RNTL [REDACTED] CNST USE KWH
 21 NEXT TYPE A FIND GWA 90
 22 13-MRDG HIST 15-COMPNT DTL 16-BUS BRKDWN 17-HI BILL 18-READ/VERIFY NEI
 20-MKT SVC DTL 21-OL BRKDWN FA

24 (A) [REDACTED]
 25 [REDACTED]

Rate Code 851 = Standby and Supplemental Service (Distribution)
 SST-1

41-2
3-2

CONFIDENTIAL

FPSC CAPACITY AUDIT
REQUEST NO. 15 P2

Page: 1 Document Name: untitled.

3 IHI BILLING HISTORY ELEC/OL BILL DETAIL 03/16/06 14:00:35
 4 [REDACTED] FBL OL 12/01/05 3/852/[REDACTED] TRTO
 5 [REDACTED] PH [REDACTED] SPEC
 6 [REDACTED] F OLDBA [REDACTED] CCI
 7 SVC FROM 07/01/05 SVC TO 08/02/05 R/R/R 3 (852) READ TYPE A
 8 ----- BILL DETAIL ----- DEMAND -----
 9 BASE AMT [REDACTED] RTP ACCESS CHG [REDACTED] ACTUAL BILLING ON-PEAK
 10 CURT/CDR CR [REDACTED] RTP USAGE CHG [REDACTED] [REDACTED]
 11 TRANS CR [REDACTED] RTP ADMIN CHG [REDACTED] CURTAILMENT [REDACTED]
 12 LOAD CNTL CR [REDACTED] GROSS RCT TAX [REDACTED] MAXIMUM [REDACTED]
 13 ECC ADJ [REDACTED] FRANCHISE FEE [REDACTED]
 14 STRM SURCHG [REDACTED] MUNICIPAL TAX [REDACTED]
 15 ECRC CHG [REDACTED] FL SALES TAX [REDACTED] ----- THIS YEAR -----
 16 FUEL CHG [REDACTED] ELECTRIC AMT [REDACTED] SVC DYS 32 BIL DYS 3
 17 CAPACITY CHG [REDACTED] BILL COMP AMT [REDACTED] LMIS CRDT DYS
 18 COSP CHG [REDACTED] BB AMOUNT [REDACTED] KWH/DAY [REDACTED]
 19 GRN PWR CHG [REDACTED] BB DEFER BAL [REDACTED] KWH USAGE [REDACTED]
 20 FPL AMT [REDACTED] TOT FAC RNTL [REDACTED] CNST USE KWH [REDACTED]
 21 NEXT TYPE A FIND GWA 90
 22 13-MRDG HIST 15-COMPNT DTL 16-BUS BRKDWN 17-HI BILL 18-READ/VERIFY NE
 3 20-MKT SVC DTL 21-OL BRKDWN FA

24 (A) [REDACTED]
 25 [REDACTED]

41-2 P2
 3-2

CONFIDENTIAL

1 IHI BILLING HISTORY ELEC/OL BILL DETAIL 03/16/06 13:47:04

2 [REDACTED] PWB ACT OL 03/28/74 3/853/ [REDACTED] ASCA TRTO

3 [REDACTED] OF F+ PH [REDACTED] SPEC

4 [REDACTED] CCI

5 [REDACTED]

6 [REDACTED] 3430 M OLDBA: [REDACTED]

7 SVC FROM 07/06/05 SVC TO 08/04/05 R/R/R 3 (853) READ TYPE A

8 ----- BILL DETAIL ----- DEMAND -----

9 BASE AMT [REDACTED] RTP ACCESS CHG [REDACTED] ACTUAL BILLING ON-PEAK

10 CURT/CDR CR [REDACTED] RTP USAGE CHG [REDACTED] [REDACTED]

11 TRANS CR [REDACTED] RTP ADMIN CHG [REDACTED] CURTAILMENT [REDACTED]

12 LOAD CNTL CR [REDACTED] GROSS RCT TAX [REDACTED] MAXIMUM [REDACTED]

13 ECC ADJ [REDACTED] FRANCHISE FEE [REDACTED]

14 STRM SURCHG [REDACTED] MUNICIPAL TAX [REDACTED]

15 ECRC CHG [REDACTED] FL SALES TAX [REDACTED] ----- THIS YEAR -----

16 FUEL CHG [REDACTED] ELECTRIC AMT [REDACTED] SVC DYS 29 BIL DYS 3

17 CAPACITY CHG [REDACTED] BILL COMP AMT [REDACTED] LMIS CRDT DYS

18 COSP CHG [REDACTED] BB AMOUNT [REDACTED] KWH/DAY [REDACTED]

19 GRN PWR CHG [REDACTED] BB DEFER BAL [REDACTED] KWH USAGE [REDACTED]

20 FPL AMT [REDACTED] TOT FAC RNTL [REDACTED] CNST USE KWH

NEXT TYPE A FIND

GWA 90

13-MRDG HIST 15-COMPNT DTL 16-BUS BRKDOWN 17-HI BILL 18-READ/VERIFY NEW
20-MKT SVC DTL 21-OL BRKDOWN FAC

41-2 13
32

PBC

03/24/06 07:59:4

BIHI BILLING HISTORY ELEC/OL BILL DETAIL

3 [REDACTED] ELE FBL 01/20/06 2/070/ [REDACTED]
 4 [REDACTED] PH [REDACTED] SPEC
 5 [REDACTED] CCI
 6 [REDACTED] M
 7 SVC FROM 07/28/05 SVC TO 08/26/05 R/R/R 2 (070) READ TYPE A
 8 ----- BILL DETAIL ----- DEMAND -----
 9 BASE AMT [REDACTED] RTP ACCESS CHG [REDACTED] ACTUAL BILLING ON-PEAK
 10 CURT/CDR CR [REDACTED] RTP USAGE CHG [REDACTED] [REDACTED] (A) [REDACTED]
 11 TRANS CR [REDACTED] RTP ADMIN CHG [REDACTED] CURTAILMENT
 12 LOAD CNTL CR [REDACTED] GROSS RCT TAX [REDACTED] MAXIMUM
 13 ECC ADJ [REDACTED] FRANCHISE FEE [REDACTED]
 14 STRM SURCHG [REDACTED] MUNICIPAL TAX [REDACTED]
 15 ECRC CHG [REDACTED] FL SALES TAX [REDACTED] ----- THIS YEAR -----
 16 FUEL CHG [REDACTED] ELECTRIC AMT [REDACTED] SVC DYS 29 BIL DYS 3
 17 CAPACITY CHG [REDACTED] BILL COMP AMT [REDACTED] LMIS CRDT DYS
 18 COSP CHG [REDACTED] BB AMOUNT [REDACTED] KWH/DAY [REDACTED]
 19 GRN PWR CHG [REDACTED] BB DEFER BAL [REDACTED] KWH USAGE [REDACTED]
 20 FPL AMT [REDACTED] TOT FAC RNTL [REDACTED] CNST USE KWH [REDACTED]

21 NEXT TYPE A FIND GWA 90
 2 13-MRDG HIST 15-COMPNT DTL 16-BUS BRKDWN 17-HI BILL 18-READ/VERIFY NE
 3 20-MKT SVC DTL 21-OL BRKDWN FA

24 (A) [REDACTED]
 25 [REDACTED]
 26 [REDACTED]
 27 [REDACTED]
 28 [REDACTED]
 29 [REDACTED]
 30 [REDACTED] = [REDACTED]
 31 [REDACTED] (41P5)

FPSC CAPACITY AUDIT
 REQUEST NO. 22, P1
 CONFIDENTIAL

See explanation for rate codes 70 + 72 on wp. 41p2

41-2
 3-3 P.1

BIHI BILLING HISTORY ELEC/OL BILL DETAIL 03/24/06 08:00:17

1
4
5
6
7
8
9
10
11
12
13
14
15
16
17
18
19
20
21
22
23
24
25
26
27
28
29
30
31

04/17/57 2/070/ [REDACTED]
 PH [REDACTED] S SPEC CCI
 M OLDBA [REDACTED]
 SVC FROM 07/28/05 SVC TO 08/26/05 R/R/R 2 070 READ TYPE A
 ----- BILL DETAIL ----- DEMAND -----
 BASE AMT [REDACTED] RTP ACCESS CHG [REDACTED] ACTUAL BILLING ON-PEAK [REDACTED]
 CURT/CDR CR [REDACTED] RTP USAGE CHG [REDACTED] 20 (A) [REDACTED]
 TRANS CR [REDACTED] RTP ADMIN CHG [REDACTED] CURTAILMENT [REDACTED]
 LOAD CNTL CR [REDACTED] GROSS RCT TAX [REDACTED] MAXIMUM [REDACTED]
 ECC ADJ [REDACTED] FRANCHISE FEE [REDACTED]
 STRM SURCHG [REDACTED] MUNICIPAL TAX [REDACTED]
 ECRC CHG [REDACTED] FL SALES TAX [REDACTED]
 FUEL CHG [REDACTED] ELECTRIC AMT [REDACTED] ----- THIS YEAR -----
 CAPACITY CHG [REDACTED] BILL COMP AMT [REDACTED] SVC DYS 28 BIL DYS 3
 COSP CHG [REDACTED] BB AMOUNT [REDACTED] LMIS CRDT DYS
 GRN PWR CHG [REDACTED] BB DEFER BAL [REDACTED] KWH/DAY [REDACTED]
 FPL AMT [REDACTED] TOT FAC RNTL [REDACTED] KWH USAGE [REDACTED]
 CNST USE KWH [REDACTED]

21 NEXT TYPE A FIND GWA 90

22 13-MRDG HIST 15-COMPNT DTL 16-BUS BRKDWN 17-HI BILL 18-READ/VERIFY NEI
20-MKT SVC DTL 21-OL BRKDWN FAI

(A) [REDACTED] 10 kw
 [REDACTED]
 [REDACTED]
 (41 p2)

FPSC CAPACITY AUDIT REQUEST NO. 22 p2

CONFIDENTIAL

41-2
3-3 p2

BIHI BILLING HISTORY ELEC/OL BILL DETAIL 03/24/06 08:00:41

04/28/92 2/070/

UCS

I+ PH

SPEC

POL CCI

SO

FL 34275 M OLDBA:

SVC FROM 07/28/05 SVC TO 08/26/05 R/R/R 2 070 READ TYPE A

BILL DETAIL

DEMAND

9	BASE AMT	RTP ACCESS CHG	ACTUAL BILLING ON-PEAK
10	CURT/CDR CR	RTP USAGE CHG	MAXIMUM
11	TRANS CR	RTP ADMIN CHG	
12	LOAD CNTL CR	GROSS RCT TAX	
13	ECC ADJ	FRANCHISE FEE	
14	STRM SURCHG	MUNICIPAL TAX	
15	ECRC CHG	FL SALES TAX	----- THIS YEAR -----
16	FUEL CHG	ELECTRIC AMT	SVC DYS 28. BIL DYS 3
17	CAPACITY CHG	BILL COMP AMT	LMIS CRDT DYS
18	COSP CHG	BB AMOUNT	KWH/DAY
19	GRN PWR CHG	BB DEFER BAL	KWH USAGE
20	FPL AMT	TOT FAC RNTL	CNST USE KWH

21 NEXT TYPE A FIND GWA 90

22 13-MRDG HIST 15-COMPNT DTL 16-BUS BRKDWN 17-HI BILL 18-READ/VERIFY NEI
20-MKT SVC DTL 21-OL BRKDWN FAC

24

25



41 ps

FPSC CAPACITY AUDIT REQUEST NO. 22 P3

CONFIDENTIAL

41-2
3-3 P-3

BIHI BILLING HISTORY ELEC/OL BILL DETAIL 03/24/06 08:01:0

2 [REDACTED] CT 03/04/98 2/070/ [REDACTED]
 4 [REDACTED] PH [REDACTED] SPEC ABP
 5 [REDACTED]
 6 [REDACTED] P
 7 SVC FROM 07/28/05 SVC TO 08/26/05 R/R/R 2 070 READ TYPE A
 8 ----- BILL DETAIL ----- DEMAND -----
 9 BASE AMT [REDACTED] RTP ACCESS CHG [REDACTED] ACTUAL BILLING ON-PEAK
 10 CURT/CDR CR [REDACTED] RTP USAGE CHG [REDACTED] [REDACTED] (A)
 11 TRANS CR [REDACTED] RTP ADMIN CHG [REDACTED] CURTAILMENT [REDACTED]
 12 LOAD CNTL CR [REDACTED] GROSS RCT TAX [REDACTED] MAXIMUM [REDACTED]
 13 ECC ADJ [REDACTED] FRANCHISE FEE [REDACTED]
 14 STRM SURCHG [REDACTED] MUNICIPAL TAX [REDACTED]
 15 ECRC CHG [REDACTED] FL SALES TAX [REDACTED] ----- THIS YEAR -----
 16 FUEL CHG [REDACTED] ELECTRIC AMT [REDACTED] SVC DYS 29 BIL DYS 3
 17 CAPACITY CHG [REDACTED] BILL COMP AMT [REDACTED] LMIS CRDT DYS
 18 COSP CHG [REDACTED] BB AMOUNT [REDACTED] KWH/DAY [REDACTED]
 19 GRN PWR CHG [REDACTED] BB DEFER BAL [REDACTED] KWH USAGE [REDACTED]
 20 FPL AMT [REDACTED] TOT FAC RNTL [REDACTED] CNST USE KWH [REDACTED]

21 NEXT TYPE A FIND GWA 90

13-MRDG HIST 15-COMPNT DTL 16-BUS BRKDWN 17-HI BILL 18-READ/VERIFY NE
 20-MKT SVC DTL 21-OL BRKDWN FA

24 (A) [REDACTED] [REDACTED]
 25 [REDACTED]
 26 [REDACTED] (41B)

FPSC CAPACITY AUDIT REQUEST NO. 22, 14

CONFIDENTIAL

41-2
3-3 P14

BIHI BILLING HISTORY ELEC/OL BILL DETAIL 03/24/06 08:01:2

11/06/03 2/072/6

PH

SPEC ABP

POL CCI

SVC FROM 07/28/05 SVC TO 08/26/05 R/R/R 2 072 6 READ TYPE 2

BILL DETAIL

DEMAND

9	BASE AMT	RTP ACCESS CHG	ACTUAL BILLING ON-PEAK
10	CURT/CDR CR	RTP USAGE CHG	
11	TRANS CR	RTP ADMIN CHG	CURTAILMENT
12	LOAD CNTL CR	GROSS RCT TAX	MAXIMUM
13	ECC ADJ	FRANCHISE FEE	
14	STRM SURCHG	MUNICIPAL TAX	
15	ECRC CHG	FL SALES TAX	----- THIS YEAR -----
16	FUEL CHG	ELECTRIC AMT	SVC DYS 28 BIL DYS 3
17	CAPACITY CHG	BILL COMP AMT	LMIS CRDT DYS
18	COSP CHG	BB AMOUNT	KWH/DAY
19	GRN PWR CHG	BB DEFER BAL	KWH USAGE
20	FPL AMT	TOT FAC RNTL	CNST USE KWH

21 NEXT TYPE A FIND GWA 90

22 13-MRDG HIST 15-COMPNT DTL 16-BUS BRKDWN 17-HI BILL 18-READ/VERIFY NE
20-MKT SVC DTL 21-OL BRKDWN FA

24
25
26

(A) [Redacted] [Redacted] 41PS

FPSC CAPACITY AUDIT
REQUEST NO. 22 PS

CONFIDENTIAL

41-2
3-3 P. 5

BIHI BILLING HISTORY ELEC/OL BILL DETAIL 03/24/06 08:07:31

3 [REDACTED] ELE ACT 07/26/01 2/072/ [REDACTED]
4 [REDACTED] PH [REDACTED]
5 [REDACTED]
6 [REDACTED] CCI

7 SVC FROM 07/28/05 SVC TO 08/26/05 R/R/R 2 072 READ TYPE A
8 ----- BILL DETAIL ----- DEMAND -----

9	BASE AMT	[REDACTED]	RTP ACCESS CHG	[REDACTED]	ACTUAL BILLING ON-PEAK	[REDACTED]
10	CURT/CDR CR	[REDACTED]	RTP USAGE CHG	[REDACTED]	[REDACTED] (A) [REDACTED]	[REDACTED]
11	TRANS CR	[REDACTED]	RTP ADMIN CHG	[REDACTED]	CURTAILMENT	[REDACTED]
12	LOAD CNTL CR	[REDACTED]	GROSS RCT TAX	[REDACTED]	MAXIMUM	[REDACTED]
13	ECC ADJ	[REDACTED]	FRANCHISE FEE	[REDACTED]		
14	STRM SURCHG	[REDACTED]	MUNICIPAL TAX	[REDACTED]		
15	ECRC CHG	[REDACTED]	FL SALES TAX	[REDACTED]	----- THIS YEAR -----	
16	FUEL CHG	[REDACTED]	ELECTRIC AMT	[REDACTED]	SVC DYS 28 BIL DYS 3	
17	CAPACITY CHG	[REDACTED]	BILL COMP AMT	[REDACTED]	LMIS CRDT DYS	
18	COSP CHG	[REDACTED]	BB AMOUNT	[REDACTED]	KWH/DAY	[REDACTED]
19	GRN PWR CHG	[REDACTED]	BB DEFER BAL	[REDACTED]	KWH USAGE	[REDACTED]
20	FPL AMT	[REDACTED]	TOT FAC RNTL	[REDACTED]	CNST USE KWH	[REDACTED]

21 NEXT TYPE A FIND GWA 90

13-MRDG HIST 15-COMPNT DTL 16-BUS BRKDWN 17-HI BILL 18-READ/VERIFY NE
20-MKT SVC DTL 21-OL BRKDWN FA

24 [REDACTED]
25 [REDACTED]
26 [REDACTED] (A)

[REDACTED]

(41 P5)

FPSC CAPACITY AUDIT
REQUEST NO. 22, 16

CONFIDENTIAL

41-2
5-3 P.6

CONFIDENTIAL

(1)	(2)	(3)	(4)	(5)	(6)	(7)	(8)	(9)	
ACCOUNT NUMBER	BILLING MONTH	RATE CODE	BILLING kW	TOTAL kWh	CAPACITY REVENUES PER CIS II	CAPACITY FACTOR PER ORDER	CALCULATED CAPACITY REVENUES	FORMULA	
① [REDACTED]	200508	75 750	497600		\$1,860.00	41-2/2-1	\$2.48	\$1,860.00 billing kW * capacity factor per order	
	200508	75 2264	969600	41-2/2-1	\$5,614.72		\$2.48	\$5,614.72 billing kW * capacity factor per order	
	200508	75 7046	3208800		\$17,474.08		\$2.48	\$17,474.08 billing kW * capacity factor per order	
	200508	75 2233	1176000		\$5,537.84		\$2.48	\$5,537.84 billing kW * capacity factor per order	
	200508	75 0	0		\$0.00		\$2.48	\$0.00 billing kW * capacity factor per order	
	200508	75 1941	842160		\$4,813.68		\$2.48	\$4,813.68 billing kW * capacity factor per order	
	200508	75 3010	1702000	41-2/2-1	\$7,464.80		\$2.48	\$7,464.80 billing kW * capacity factor per order	
	200508	75 1073	350400		\$2,661.04		\$2.48	\$2,661.04 billing kW * capacity factor per order	
							41-2/2	45,626.16	
	② [REDACTED]	200508	78 0	20		\$0.13		\$0.00633	\$0.13 total kWh * capacity factor per order
200508		78 0	20		\$0.13		\$0.00633	\$0.13 total kWh * capacity factor per order	
200508		78 0	20		\$0.13		\$0.00633	\$0.13 total kWh * capacity factor per order	
200508		78 0	20		\$0.13		\$0.00633	\$0.13 total kWh * capacity factor per order	
200508		78 0	20		\$0.13		\$0.00633	\$0.13 total kWh * capacity factor per order	
200508		78 0	20		\$0.13		\$0.00633	\$0.13 total kWh * capacity factor per order	
200508		78 0	20		\$0.13		\$0.00633	\$0.13 total kWh * capacity factor per order	
200508		78 0	20		\$0.13		\$0.00633	\$0.13 total kWh * capacity factor per order	
200508		78 0	20		\$0.13		\$0.00633	\$0.13 total kWh * capacity factor per order	
200508		78 0	20		\$0.13		\$0.00633	\$0.13 total kWh * capacity factor per order	
200508		78 0	20		\$0.13		\$0.00633	\$0.13 total kWh * capacity factor per order	
200508		78 0	20		\$0.13		\$0.00633	\$0.13 total kWh * capacity factor per order	
200508		78 0	20		\$0.13		\$0.00633	\$0.13 total kWh * capacity factor per order	
200508		78 0	20		\$0.13		\$0.00633	\$0.13 total kWh * capacity factor per order	
200508		78 0	20		\$0.13		\$0.00633	\$0.13 total kWh * capacity factor per order	
200508		78 0	20		\$0.13		\$0.00633	\$0.13 total kWh * capacity factor per order	
200508		78 0	20		\$0.13		\$0.00633	\$0.13 total kWh * capacity factor per order	
200508		78 0	20		\$0.13		\$0.00633	\$0.13 total kWh * capacity factor per order	
200508		78 0	20		\$0.13		\$0.00633	\$0.13 total kWh * capacity factor per order	
③ [REDACTED]		200508	78 0	20		\$0.13		\$0.00633	\$0.13 total kWh * capacity factor per order

PDF

41-2/2-1

41/306

5

(PBL)

BIHI BILLING HISTORY ELEC/OL BILL DETAIL 04/10/06 16:01:4

[REDACTED] PWB ACT 06/18/85 3/075/ [REDACTED] ASM1
[REDACTED] PH [REDACTED] M FPSC SPEC

[REDACTED] M OLDBA: [REDACTED] CCI
SVC FROM 07/07/05 SVC TO 08/05/05 R/R/R 3 075 READ TYPE A PWC

----- BILL DETAIL ----- DEMAND -----

9 BASE AMT [REDACTED] RTP ACCESS CHG [REDACTED] ACTUAL BILLING ON-PEAK
10 CURT/CDR CR [REDACTED] RTP USAGE CHG [REDACTED] [REDACTED] (A)
11 TRANS CR [REDACTED] RTP ADMIN CHG [REDACTED] CURTAILMENT [REDACTED]
12 LOAD CNTL CR [REDACTED] GROSS RCT TAX [REDACTED] MAXIMUM [REDACTED]
13 ECC ADJ [REDACTED] FRANCHISE FEE [REDACTED]
14 STRM SURCHG [REDACTED] MUNICIPAL TAX [REDACTED]
15 ECRC CHG [REDACTED] FL SALES TAX [REDACTED] ----- THIS YEAR -----
16 FUEL CHG [REDACTED] ELECTRIC AMT [REDACTED] SVC DYS 29 BIL DYS 3
17 CAPACITY CHG (A) [REDACTED] BILL COMP AMT [REDACTED] LMIS CRDT DYS
18 COSP CHG [REDACTED] BB AMOUNT [REDACTED] KWH/DAY [REDACTED]
19 GRN PWR CHG [REDACTED] BB DEFER BAL [REDACTED] KWH USAGE [REDACTED]
20 FPL AMT [REDACTED] TOT FAC RNTL [REDACTED] CNST USE KWH [REDACTED]

21 NEXT TYPE A FIND GWA
22 13-MRDG HIST 15-COMPNT DTL 16-BUS BRKDWN 17-HI BILL 18-READ/VERIFY NE
20-MKT SVC DTL 21-OL BRKDWN FA

24 (A) [REDACTED] [REDACTED]

FPSC CAPACITY AUDIT
REQUEST NO. 395 P.16

CONFIDENTIAL

41-2
3-4 7.1

BIHI BILLING HISTORY ELEC/OL BILL DETAIL 04/10/06 16:02:20

09/26/03 2/075/ SY14489 ASM1 TRTO

PH [REDACTED] SPEC

OLDBA: [REDACTED] CCI PWQ

SVC FROM 07/12/05 SVC TO 08/10/05 R/R/R 2 075 READ TYPE A

----- BILL DETAIL ----- DEMAND -----

9	BASE AMT	[REDACTED]	RTP ACCESS CHG	[REDACTED]	ACTUAL BILLING ON-PEAK	[REDACTED]
10	CURT/CDR CR	[REDACTED]	RTP USAGE CHG	[REDACTED]	CURTAILMENT	[REDACTED]
11	TRANS CR	[REDACTED]	RTP ADMIN CHG	[REDACTED]	MAXIMUM	[REDACTED]
12	LOAD CNTL CR	[REDACTED]	GROSS RCT TAX	[REDACTED]		
13	ECC ADJ	[REDACTED]	FRANCHISE FEE	[REDACTED]		
14	STRM SURCHG	[REDACTED]	MUNICIPAL TAX	[REDACTED]		
15	ECRC CHG	[REDACTED]	FL SALES TAX	[REDACTED]	----- THIS YEAR -----	
16	FUEL CHG	[REDACTED]	ELECTRIC AMT	[REDACTED]	SVC DYS 29 BIL DYS 3	
17	CAPACITY CHG (A)	[REDACTED]	BILL COMP AMT	[REDACTED]	LMIS CRDT DYS	
18	COSP CHG	[REDACTED]	BB AMOUNT	[REDACTED]	KWH/DAY	[REDACTED]
19	GRN PWR CHG	[REDACTED]	BB DEFER BAL	[REDACTED]	KWH USAGE	[REDACTED]
20	FPL AMT	[REDACTED]	TOT FAC RNTL	[REDACTED]	CONST USE KWH	[REDACTED]

31 NEXT TYPE A FIND GWA

22 13-MRDG HIST 15-COMPNT DTL 16-BUS BRKDWN 17-HI BILL 18-READ/VERIFY NE
20-MKT SVC DTL 21-OL BRKDWN FA

24 (A) [REDACTED]

CONFIDENTIAL

FPSC CAPACITY AUDIT
REQUEST NO. 395 P.17

41-2
3-4 P.2

BIHI BILLING HISTORY ELEC/OL BILL DETAIL 04/10/06 16:02:41

[REDACTED] FBL 12/14/05 2/075/ [REDACTED] M ASCA UCS
[REDACTED] M SPEC CCI

4
5
6
7
8
9
10
11
12
13
14
15
16
17
18
19
20

SVC FROM 07/26/05 SVC TO 08/24/05 R/R/R 2 075 READ TYPE A

----- BILL DETAIL ----- DEMAND -----

BASE AMT	[REDACTED]	RTP ACCESS CHG	[REDACTED]	ACTUAL BILLING ON-PEAK	[REDACTED]
CURT/CDR CR	[REDACTED]	RTP USAGE CHG	[REDACTED]	CURTAILMENT	[REDACTED]
TRANS CR	[REDACTED]	RTP ADMIN CHG	[REDACTED]	MAXIMUM	[REDACTED]
LOAD CNTL CR	[REDACTED]	GROSS RCT TAX	[REDACTED]		
ECC ADJ	[REDACTED]	FRANCHISE FEE	[REDACTED]		
STRM SURCHG	[REDACTED]	MUNICIPAL TAX	[REDACTED]		
ECRC CHG	[REDACTED]	FL SALES TAX	[REDACTED]	----- THIS YEAR -----	
FUEL CHG	[REDACTED]	ELECTRIC AMT	[REDACTED]	SVC DYS 29 BIL DYS 3	
CAPACITY CHG	[REDACTED]	BILL COMP AMT	[REDACTED]	LMIS CRDT DYS	
COSP CHG	[REDACTED]	BB AMOUNT	[REDACTED]	KWH/DAY	[REDACTED]
GRN PWR CHG	[REDACTED]	BB DEFER BAL	[REDACTED]	KWH USAGE	[REDACTED]
FPL AMT	[REDACTED]	TOT FAC RNTL	[REDACTED]	CONST USE KWH	[REDACTED]

31 NEXT TYPE A FIND GWA

32 13-MRDG HIST 15-COMPNT DTL 16-BUS BRKDWN 17-HI BILL 18-READ/VERIFY NE FA
20-MKT SVC DTL 21-OL BRKDWN

24

(A) [REDACTED] 41-2/3-A

CONFIDENTIAL

FPSC CAPACITY AUDIT
REQUEST NO. 398 P.18

41-2
3-4 2.3

FLORIDA POWER & LIGHT
 STANDBY RATE BILLING SYSTEM - SUMMARY OF CUSTOMER CHARGES FOR AUG. 2005

1
2

CUSTOMER NUMBER [REDACTED] NAME [REDACTED] TYPE: SST-1 (STANDBY ONLY) SERVICE TO : 08/15/05 3

CUSTOMER CHARGE	STANDBY CHARGES	RATE	
CUSTOMER CHARGE	[REDACTED]	85	4
CONTRACT KW CHARGE	[REDACTED]		5
DEMAND CHARGE	(GREATER OF A OR B)		6
	A) SUMM DAILY DEMAND CHR: [REDACTED]		7
	B) RESERVATION DEMAND CHR: [REDACTED]		8
CSD - MAX ON PK KW	[REDACTED]		9
ON PK KWH CHARGE	[REDACTED]		10
OFF PK KWH CHARGE	[REDACTED]		11
TRANSFORMER RIDER CREDIT	[REDACTED]		12
FUEL CHARGES :	(BASED ON GSLDT-3 FUEL CHARGES)		13
ON PK FUEL	[REDACTED]		14
OFF PK FUEL	[REDACTED]		15
TAL (BASE + FUEL)			16

CUSTOMER CHARGE	SUPPLEMENTAL CHARGES	
ON PK KW CHARGE	[REDACTED]	17
ON PK KWH CHARGE	[REDACTED]	18
OFF PK KWH CHARGE	[REDACTED]	19
REGULAR KWH CHARGE	[REDACTED]	20
MAX DEMAND CHARGE	[REDACTED]	21
TRANSFORMER RIDER CREDIT	[REDACTED]	22
CURTAIL CREDIT	[REDACTED]	23
FUEL CHARGES :	[REDACTED]	24
ON PK FUEL	[REDACTED]	25
OFF PK FUEL	[REDACTED]	26
REGULAR FUEL	[REDACTED]	27
TAL (BASE + FUEL)	[REDACTED]	28

Standby	[REDACTED]	X	[REDACTED]
ECCR	[REDACTED]	X	[REDACTED]
EORC	[REDACTED]	X	[REDACTED]
CPRC	[REDACTED]	X	[REDACTED]
CSD	[REDACTED]	X	[REDACTED]
OBC	[REDACTED]	X	[REDACTED]
Storm Chg	[REDACTED]	X	[REDACTED]
Electric Service Amount	[REDACTED]		[REDACTED]

FPSC CAPACITY AUDIT
 REQUEST NO. 39 P

CONFIDENTIAL

TOTALS (STANDBY AND SUPPLEMENTAL) 34
 TALE (KWH): [REDACTED] TOTAL FPL CHARGES: [REDACTED] TOTAL ON PK KWH: [REDACTED] TOTAL FUEL CHARGES: [REDACTED] 35
 36
 37

0.1
 4/12/05
 5/2/05

FLORIDA POWER & LIGHT
STANDBY RATE BILLING SYSTEM - PRIMARY OF CUSTOMER CHARGES FOR AUG. 2005

1
2

CUSTOMER NUMBER : [REDACTED] NAME: [REDACTED] TYPE: SST-1 (STANDBY & SUPPLEMENTAL) SERVICE TO : 07/31/05 3

===== STANDBY CHARGES ===== RATE 85 4

CUSTOMER CHARGE \$ [REDACTED]
CONTRACT KW CHARGE \$ [REDACTED]
DEMAND CHARGE \$ [REDACTED]

(GREATER OF A OR B)
A) SUMM DAILY DEMAND CHRG : [REDACTED]
B) RESERVATION DEMAND CHRG : [REDACTED]



OSD - MAX DN PK KW \$ [REDACTED]
DN PK KWH CHARGE \$ [REDACTED]
OFF PK KWH CHARGE \$ [REDACTED]
TRANSFORMER RIDER CREDIT \$ [REDACTED]

(BASED ON GSLDT-3 FUEL CHARGES)

FUEL CHARGES :
DN PK FUEL \$ [REDACTED]
OFF PK FUEL \$ [REDACTED]
AL (BASE + FUEL) \$ [REDACTED]

===== SUPPLEMENTAL CHARGES ===== RATE 90 18

DN PK KW CHARGE \$ [REDACTED]
DN PK KWH CHARGE \$ [REDACTED]
OFF PK KWH CHARGE \$ [REDACTED]
REGULAR KWH CHARGE \$ [REDACTED]
MAX DEMAND CHARGE \$ [REDACTED]
TRANSFORMER RIDER CREDIT \$ [REDACTED]
CURTAIL CREDIT \$ [REDACTED]

(BASED ON GSLDT-3 FUEL CHARGES)

FUEL CHARGES :
DN PK FUEL \$ [REDACTED]
OFF PK FUEL \$ [REDACTED]
REGULAR FUEL \$ [REDACTED]
AL (BASE + FUEL) \$ [REDACTED]

===== TOTALS ===== 30
(STANDBY AND SUPPLEMENTAL) 31

32
AL KWH: [REDACTED] TOTAL FPL CHARGES: [REDACTED] TOTAL ON PK KWH: [REDACTED] TOTAL FUEL CHARGES: [REDACTED] 33

FPSC CAPACITY AUDIT
REQUEST NO. 39 P#5 23

CONFIDENTIAL 24
25

2.0
3/1/05

FLORIDA POWER & LIGHT
STANDBY RATE BILLING SYSTEM SUMMARY OF CUSTOMER CHARGES FOR AUG. 2005

CUSTOMER NUMBER : [REDACTED] NAME [REDACTED] TYPE: SST-1 (STANDBY ONLY) SERVICE TO : 08/15/05 3

CHARGE DESCRIPTION	STANDBY CHARGES	RATE	
CUSTOMER CHARGE	[REDACTED]	85	4
CONTRACT KW CHARGE	[REDACTED]		5
DEMAND CHARGE	(GREATER OF A OR B)		6
	A) SUMM DAILY DEMAND CHRG :	[REDACTED]	7
	B) RESERVATION DEMAND CHRG :	[REDACTED]	8
CSD - MAX ON PK KW	[REDACTED]		9
ON PK KWH CHARGE	[REDACTED]		10
OFF PK KWH CHARGE	[REDACTED]		11
TRANSFORMER RIDER CREDIT	[REDACTED]		12
FUEL CHARGES :	(BASED ON GSLDT-3 FUEL CHARGES)		13
ON PK FUEL	(0 @ \$0.04062)		14
OFF PK FUEL	(28,577 @ \$0.03724)		15
TAL (BASE + FUEL)			16

CHARGE DESCRIPTION	SUPPLEMENTAL CHARGES	
ON PK KW CHARGE	[REDACTED]	17
ON PK KWH CHARGE	[REDACTED]	18
OFF PK KWH CHARGE	[REDACTED]	19
REGULAR KWH CHARGE	[REDACTED]	20
MAX DEMAND CHARGE	[REDACTED]	21
TRANSFORMER RIDER CREDIT	[REDACTED]	22
CURTAIL CREDIT	[REDACTED]	23
FUEL CHARGES :		24
ON PK FUEL	[REDACTED]	25
OFF PK FUEL	[REDACTED]	26
REGULAR FUEL	[REDACTED]	27
TAL (BASE + FUEL)	[REDACTED]	28

Total Base & Fuel Charges		
Standby	[REDACTED]	[REDACTED]
ECCR	X	[REDACTED]
ECRC	X	[REDACTED]
CPRC		[REDACTED]
	X	[REDACTED]
CSD	X	[REDACTED]
OBC	X	[REDACTED]
Storm Chg	X	[REDACTED]
Electric Service Amount		[REDACTED]

FPSC CAPACITY AUDIT REQUEST NO. 3976

CONFIDENTIAL

TOTALS (STANDBY AND SUPPLEMENTAL)
 TAL KWH: [REDACTED] TOTAL FPL CHARGES: [REDACTED] TOTAL ON PK KWH: [REDACTED] TOTAL FUEL CHARGES: [REDACTED]

63 4/15 5/12

3
4
5
6
7
8
9
10
11
12
13
14
15
16
17
18
19
20
21
22
23
24
25
26
27
28
29
30
31
32
33
34
35
36
37
38
39
40

FLORIDA POWER & LIGHT
STANDBY RATE BILLING SYSTEM - SUMMARY OF CUSTOMER CHARGES FOR AUG. 2005

1
2

CUSTOMER NUMBER: [REDACTED] NAME: [REDACTED] TYPE: SST-1 (STANDBY ONLY) SERVICE TO: 08/09/05 3

===== STANDBY CHARGES ===== RATE 85 4

CUSTOMER CHARGE \$ [REDACTED] 5

CONTRACT KW CHARGE \$ [REDACTED] 6

DEMAND CHARGE \$ [REDACTED] (GREATER OF A OR B) 7

A) SUMM DAILY DEMAND CHRG: [REDACTED] 8

B) RESERVATION DEMAND CHRG: [REDACTED] 9

CSD - MAX ON PK KW \$ [REDACTED] 10

ON PK KWH CHARGE \$ [REDACTED] 11

OFF PK KWH CHARGE \$ [REDACTED] 12

TRANSFORMER RIDER CREDIT \$ [REDACTED] 13

FUEL CHARGES: (BASED ON GSLDT-3 FUEL CHARGES) 14

ON PK FUEL \$ [REDACTED] 15

OFF PK FUEL \$ [REDACTED] 16

TOTAL (BASE + FUEL) \$ [REDACTED] 17

===== SUPPLEMENTAL CHARGES ===== 18

ON PK KW CHARGE \$ [REDACTED] 19

ON PK KWH CHARGE \$ [REDACTED] 20

OFF PK KWH CHARGE \$ [REDACTED] 21

REGULAR KWH CHARGE \$ [REDACTED] 22

MAX DEMAND CHARGE \$ [REDACTED] 23

TRANSFORMER RIDER CREDIT \$ [REDACTED] 24

CURTAIL CREDIT \$ [REDACTED] 25

FUEL CHARGES: 26

ON PK FUEL \$ [REDACTED] 27

OFF PK FUEL \$ [REDACTED] 28

REGULAR FUEL \$ [REDACTED] 29

TOTAL (BASE + FUEL) \$ [REDACTED] 30

COMBINED CHARGES \$ [REDACTED] 31

TOTAL KW: [REDACTED] TOTAL FPL CHARGES: [REDACTED] TOTAL ON PK KWH: [REDACTED] TOTAL FUEL CHARGES: [REDACTED] 32

FPSC CAPACITY AUDIT
REQUEST NO. 3928 14

CONFIDENTIAL 16

** INCLUDES: SST-1T

Total Base & Fuel Charges			
Standby			
ECCR	X		
ECRC	X		
CPRC			
	X	X	
CSD		X	
OBC		X	
Storm Chg		X	
Electric Service Amount			

TOTALS (STANDBY AND SUPPLEMENTAL) 35

89
3/14/05

STANDBY RATE BILLING SYSTEM SUMMARY OF CUSTOMER CHARGES FOR AUG. 2005

1
2
3
4
5
6
7
8
9
10
11
12
13
14
15
16
17
18
19
20
21
22
23
24
25
26
27
28
29
30
31
32
33
34
35
36
37
38
39
40

CUSTOMER NUMBER: [REDACTED] NAME: [REDACTED] TYPE: SST-1 (STANDBY ONLY) SERVICE TO: 08/24/05

CUSTOMER CHARGE \$
CONTRACT KW CHARGE \$
DEMAND CHARGE \$

CSD - MAX ON PK KW \$
ON PK KWH CHARGE \$
OFF PK KWH CHARGE \$
TRANSFORMER RIDER CREDIT \$
FUEL CHARGES :
ON PK FUEL \$
OFF PK FUEL \$
TOTAL (BASE + FUEL) \$

STANDBY CHARGES

(GREATER OF A OR B)

A) SUMM DAILY DEMAND CHRG :

B) RESERVATION DEMAND CHRG :

(BASED ON GSLDT-3 FUEL CHARGES)

FPSC CAPACITY AUDIT
REQUEST NO. 39P9

CONFIDENTIAL

ON PK KW CHARGE \$
ON PK KWH CHARGE \$
OFF PK KWH CHARGE \$
REGULAR KWH CHARGE \$
MAX DEMAND CHARGE \$
TRANSFORMER RIDER CREDIT \$
CURTAIL CREDIT \$
FUEL CHARGES :
ON PK FUEL \$
OFF PK FUEL \$
REGULAR FUEL \$
TOTAL (BASE + FUEL) \$

SUPPLEMENTAL CHARGES

** INCLUDES:

SST-1T1

Total Base & Fuel Charges			
Standby			
ECCR		X	
ECRC		X	
CPRC			
	X		X
CSD		X	
OBC		X	
Storm Chg		X	
Electric Service Amount			

TOTALS (STANDBY AND SUPPLEMENTAL)

TOTAL KWH: [REDACTED] TOTAL FPL CHARGES: [REDACTED] TOTAL ON PK KWH: [REDACTED] TOTAL FUEL CHARGES: [REDACTED]

Handwritten notes:
P
W/E
W/P

STANDBY RATE BILLING SYSTEM - SUMMARY OF CUSTOMER CHARGES FOR AUG. 2005

CUSTOMER NUMBER: [REDACTED] NAME: [REDACTED] TYPE: SST-1 (STANDBY ONLY) SERVICE TO: 08/02/05

STANDBY CHARGES RATE .85

CUSTOMER CHARGE \$ [REDACTED]
 CONTRACT KW CHARGE \$ [REDACTED]
 DEMAND CHARGE \$ [REDACTED]

(GREATER OF A OR B)

A) SUMM DAILY DEMAND CHRG : [REDACTED]
 B) RESERVATION DEMAND CHRG : [REDACTED]

CSD - MAX ON PK KW \$ [REDACTED]
 ON PK KWH CHARGE \$ [REDACTED]
 OFF PK KWH CHARGE \$ [REDACTED]
 TRANSFORMER RIDER CREDIT \$ [REDACTED]

(BASED ON GSLDT-3 FUEL CHARGES)

FUEL CHARGES :
 ON PK FUEL \$ [REDACTED]
 OFF PK FUEL \$ [REDACTED]

FPSC CAPACITY AUDIT
 REQUEST NO. 39 P12

CONFIDENTIAL

AL (BASE + FUEL) \$ [REDACTED]

SUPPLEMENTAL CHARGES

ON PK KW CHARGE \$ [REDACTED]
 ON PK KWH CHARGE \$ [REDACTED]
 OFF PK KWH CHARGE \$ [REDACTED]
 REGULAR KWH CHARGE \$ [REDACTED]
 MAX DEMAND CHARGE \$ [REDACTED]
 TRANSFORMER RIDER CREDIT \$ [REDACTED]
 CURTAIL CREDIT \$ [REDACTED]
 FUEL CHARGES :
 ON PK FUEL \$ [REDACTED]
 OFF PK FUEL \$ [REDACTED]
 REGULAR FUEL \$ [REDACTED]
 AL (BASE + FUEL) \$ [REDACTED]

Total Base & Fuel Charges:	
Standby	[REDACTED]
ECCR	X [REDACTED]
ECRC	X [REDACTED]
CPRC	[REDACTED]
X [REDACTED]	X [REDACTED]
CSD	X [REDACTED]
OBC	X [REDACTED]
Storm Chg	X [REDACTED]
Electric Service Amount	[REDACTED]

TOTALS (STANDBY AND SUPPLEMENTAL)

AL KWH [REDACTED] TOTAL FPL CHARGES: [REDACTED] TOTAL ON PK KWH: [REDACTED] TOTAL FUEL CHARGES: [REDACTED]

2.0
 5/15

3
4
5
6
7
8
9
10
11
12
13
14
15
16
17
18
19
20
21
22
23
24
25
26
27
28
29
30
31
32
33
34
35
36
37

FLORIDA POWER & LIGHT
STANDBY RATE BILLING SYSTEM SUMMARY OF CUSTOMER CHARGES FOR AUG. 2005

2

STOMER NUMBER : [REDACTED] NAME: [REDACTED] TYPE: SST-1 (STANDBY ONLY) SERVICE TO : 08/23/05 3

===== STANDBY CHARGES ===== RATE 85

CUSTOMER CHARGE _____ \$ [REDACTED]

CONTRACT KW CHARGE _____ \$ [REDACTED]

DEMAND CHARGE _____ \$ [REDACTED]

(GREATER OF A OR B)

A) SUMM DAILY DEMAND CHRG : [REDACTED]

B) RESERVATION DEMAND CHRG : [REDACTED]

CSD - MAX ON PK KW _____ \$ [REDACTED]

ON PK KWH CHARGE _____ \$ [REDACTED]

OFF PK KWH CHARGE _____ \$ [REDACTED]

TRANSFORMER RIDER CREDIT _____ \$ [REDACTED]

FUEL CHARGES :

ON PK FUEL _____ \$ [REDACTED]

OFF PK FUEL _____ \$ [REDACTED]

TAL (BASE + FUEL) _____ \$ [REDACTED]

(BASED ON GSLDT-3 FUEL CHARGES)

FPSC CAPACITY AUDIT REQUEST NO. 39 P/3

CONFIDENTIAL

4
5
6
7
8
9
10
11
12
13
14
15
16
17
18
19
20
21
22
23
24
25
26
27
28
29
30
31
32
33
34
35
36

===== SUPPLEMENTAL CHARGES =====

ON PK KW CHARGE _____ \$ [REDACTED]

ON PK KWH CHARGE _____ \$ [REDACTED]

OFF PK KWH CHARGE _____ \$ [REDACTED]

REGULAR KWH CHARGE _____ \$ [REDACTED]

MAX DEMAND CHARGE _____ \$ [REDACTED]

TRANSFORMER RIDER CREDIT _____ \$ [REDACTED]

CURTAIL CREDIT _____ \$ [REDACTED]

FUEL CHARGES :

ON PK FUEL _____ \$ [REDACTED]

OFF PK FUEL _____ \$ [REDACTED]

REGULAR FUEL _____ \$ [REDACTED]

ITAL (BASE + FUEL) _____ \$ [REDACTED]

COMBINED CHARGES _____ \$ [REDACTED]

ITAL KWH [REDACTED] TOTAL FPL CHARGES: [REDACTED] TOTAL ON PK KWH: [REDACTED] TOTAL FUEL CHARGES: [REDACTED]

TOTALS (STANDBY AND SUPPLEMENTAL)

** INCLUDES:

Total Base & Fuel Charges		
Standby		
ECCR	X	[REDACTED]
ECRC	X	[REDACTED]
CPRC		
	X	X
CSD	X	[REDACTED]
OBC	X	[REDACTED]
Storm Chg	X	[REDACTED]
Electric Service Amount		[REDACTED]

SST-1T1

0.10
5/12
5/15

FLORIDA POWER & LIGHT
STANDBY RATE BILLING SYSTEM SUMMARY OF CUSTOMER CHARGES FOR AUG. 2005

1
2

CUSTOMER NUMBER: [REDACTED] NAME: [REDACTED] TYPE: SST-1 (STANDBY ONLY) SERVICE TO: 08/09/05 3

STANDBY CHARGES RATE 85 4
 CUSTOMER CHARGE \$ [REDACTED] 5
 CONTRACT KW CHARGE \$ [REDACTED] 6
 DEMAND CHARGE \$ (GREATER OF A OR B) 7
 A) SUMM DAILY DEMAND CHRG : [REDACTED] 8
 B) RESERVATION DEMAND CHRG : [REDACTED] 9
 CSD - MAX ON PK KW \$ [REDACTED] 10
 ON PK KWH CHARGE \$ [REDACTED] 11
 OFF PK KWH CHARGE \$ [REDACTED] 12
 TRANSFORMER RIDER CREDIT \$ [REDACTED] 13
 FUEL CHARGES : (BASED ON GSLDT-3 FUEL CHARGES) FPSC CAPACITY AUDIT REQUEST NO. 39 RA 14
 ON PK FUEL \$ [REDACTED] 15
 OFF PK FUEL \$ [REDACTED] 16
 TOTAL (BASE + FUEL) \$ [REDACTED] 17

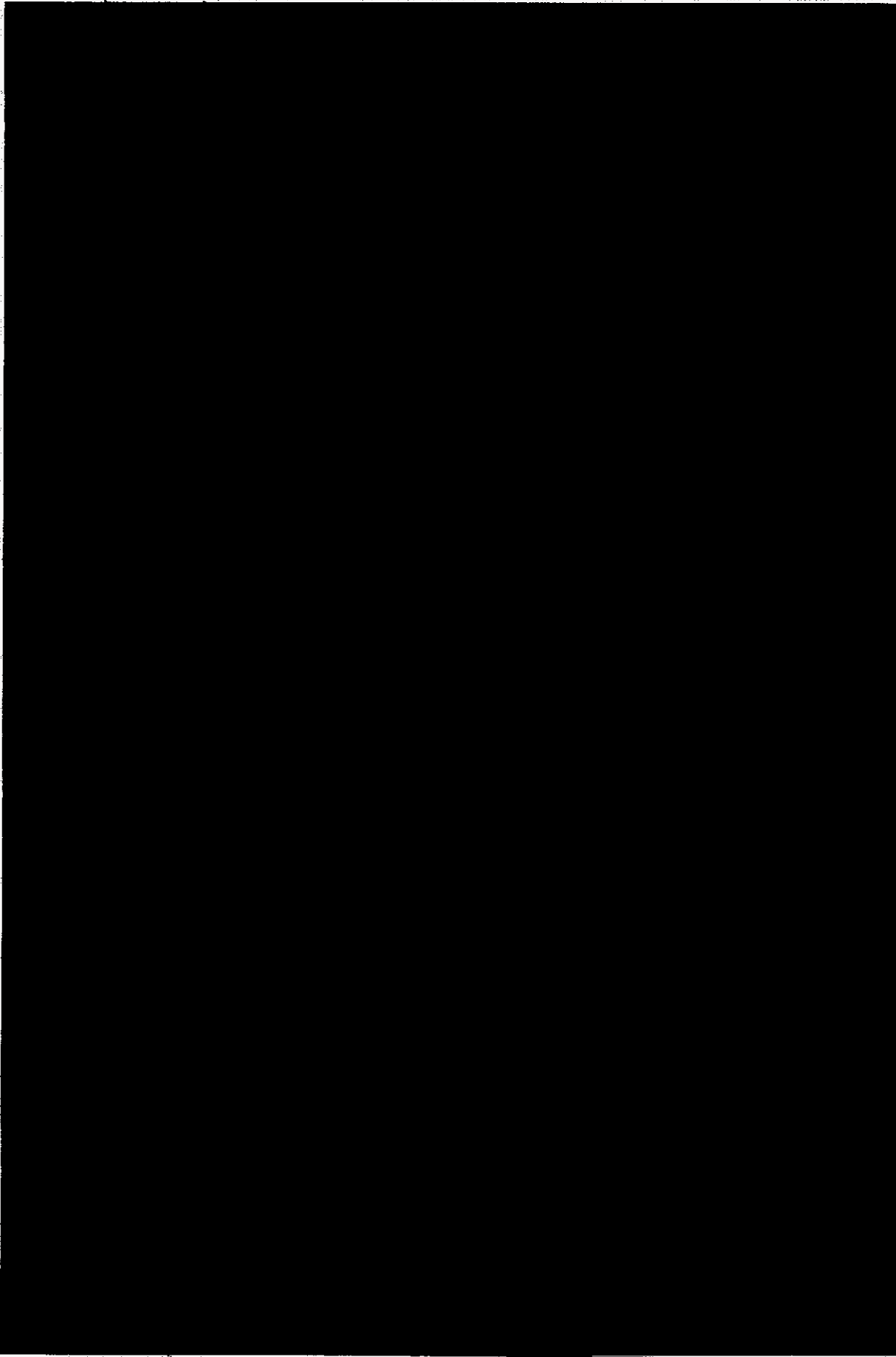
CONFIDENTIAL

SUPPLEMENTAL CHARGES 18
 ON PK KW CHARGE \$ [REDACTED] 19
 ON PK KWH CHARGE \$ [REDACTED] 20
 OFF PK KWH CHARGE \$ [REDACTED] 21
 REGULAR KWH CHARGE \$ [REDACTED] 22
 MAX DEMAND CHARGE \$ [REDACTED] 23
 TRANSFORMER RIDER CREDIT \$ [REDACTED] 24
 CURTAIL CREDIT \$ [REDACTED] 25
 FUEL CHARGES : 26
 ON PK FUEL \$ [REDACTED] 27
 OFF PK FUEL \$ [REDACTED] 28
 REGULAR FUEL \$ [REDACTED] 29
 TOTAL (BASE + FUEL) \$ [REDACTED] 30

Total Base & Fuel Charges			
Standby			
ECCR	X	[REDACTED]	[REDACTED]
ECRC	X	[REDACTED]	[REDACTED]
CPRC		[REDACTED]	[REDACTED]
	X	X	[REDACTED]
CSD	X	[REDACTED]	[REDACTED]
OBC	X	[REDACTED]	[REDACTED]
Storm Chg	X	[REDACTED]	[REDACTED]
Electric Service Amount		[REDACTED]	[REDACTED]

TOTALS (STANDBY AND SUPPLEMENTAL) 31
 TOTAL KWH: [REDACTED] TOTAL FPL CHARGES: [REDACTED] TOTAL ON PK KWH: [REDACTED] TOTAL FUEL CHARGES: \$ [REDACTED] 32
 33
 34
 35
 36
 37

5/14/05



44-1
1-2

3 [Icons]

4 Financial Company 01 As Of 04/07/2005
 Display Ledger, Month
 Journal Voucher

5 GL Acct Ledger Date Change Location Source EAC Amount JV Month JV Number Page Number Worksheet FE Interface Id

6 From 555.440 200507

7 To 555.441 200507

A

Transactions

Total	4	11,702,165.81
Retrieved	4	11,702,165.81
Select		

45

10
11
12
13

Ledger Date	Account	Chg Loen	Amount	Source Code	JV Mo/ JV #	Page	Description
200507	555.440	001	[Redacted]	65000	0709G	001	DESOTO CAPACITY Desoto County Generat
200507	555.441	001	[Redacted]	65000	0709G	001	OLEANDER CAPACITY Southern Generat
200507	555.441	001	[Redacted]	65000	0709G	001	RESI CAPACITY Reliant Energy Invoice
200507	555.441	001	[Redacted]	65000	0709H	001	ACT DESOTO CAPACITY Desoto County Generat

- (A) Fixed payment portion of invoice only
- (B) Firm Capacity portion of invoice only
- (C) Capacity charges for July June
- (D) Diff. between March, April & May actual & Revised invoice per invoice from Desoto.

x traced to invoice

CONFIDENTIAL

45-1

DLK17, Page 1

Request Clause
 ICA: 006-045-4-1 Dkt: 0050001-01
 FBE: 12/31/05
 Title: Sent To Jan
 Date: 4/10/06
 By: [Signature]



^{1 P 11}
CONFIDENTIAL

INVOICE

1 Invoice Number: 42387 Invoice Month: 01/2005
 2 Invoice Date: February 04, 2005
 3 Invoice Amount: \$2,911,840.00

			A	B	C	D
4	SALES					
5	139867	POWER	SYSTEM HOURLY Power Sale # 139867 From 31-JAN-05 Through 31-JAN-05. REF:FPL Sales	150 MW	\$55,000,000	\$8,250.00 USD
6						
7						
8	139907	POWER	SYSTEM HOURLY Power Sale # 139907 From 31-JAN-05 Through 31-JAN-05. REF:FPL Sales	150 MW	\$67,000,000	\$10,050.00 USD
9						
10						
11			(SALES) SUB TOTAL	42,797 MW		\$2,911,840.00
12			TOTAL Volume:	42,797 MW	TOTAL:	\$2,911,840.00

120
P

13 Wire Information:

14	Wire Bank: Bank of America	Wire City/State: Dallas, TX
15	ABA Number: 111000012	Account Name: Florida Power & Light Comp:
16	Account Number: [REDACTED]	

17 Comments:

47-1 89
1-1

47-1

