



John T. Butler
Assistant General Counsel - Regulatory
Florida Power & Light Company
700 Universe Boulevard
Juno Beach, FL 33408-0420
(561) 304-5639
(561) 691-7135 (Facsimile)
John.butler@fpl.com

August 16, 2016

- VIA ELECTRONIC FILING -

Ms. Carlotta S. Stauffer
Commission Clerk
Florida Public Service Commission
2540 Shumard Oak Blvd.
Tallahassee, FL 32399-0850

Re: Docket Nos. 160021-EI, 160061-EI, 160062-EI and 160088-EI

Dear Ms. Stauffer:

Enclosed for filing on behalf of Florida Power & Light Company ("FPL") are the errata sheets for Florida Power & Light Company witnesses John J. Reed (direct), Marlene M. Santos (direct), Roxane R. Kennedy (direct), Rosemary Morley (direct and MFR F-5), Keith Ferguson (direct), Ned W. Allis (direct and rebuttal), Sam Forrest (direct and rebuttal), Robert B. Hevert (direct), Moray Dewhurst (direct and rebuttal), and Renae B. Deaton (direct).

If you should have any questions about this filing, please do not hesitate to contact me.

Sincerely,

/s/ John T. Butler

John T. Butler

Enclosures

cc: Parties of record in Docket Nos. 160021-EI, 160061-EI, 160062-EI and 160088-EI

ERRATA SHEET

WITNESS: JOHN J. REED – DIRECT TESTIMONY AND EXHIBITS

<u>PAGE #</u>	<u>LINE #</u>	<u>CHANGE</u>
17	22	Change “ten” to “eight”
27	15	Change “JJR-7” to “JJR-4”
JJR-2, Page 6	12 (not numbered)	Insert the following row immediately above “Florida Senate Committee on Communication, Energy and Utilities” as shown in attached Updated Exhibit JJR-2, Page 6 of 29:

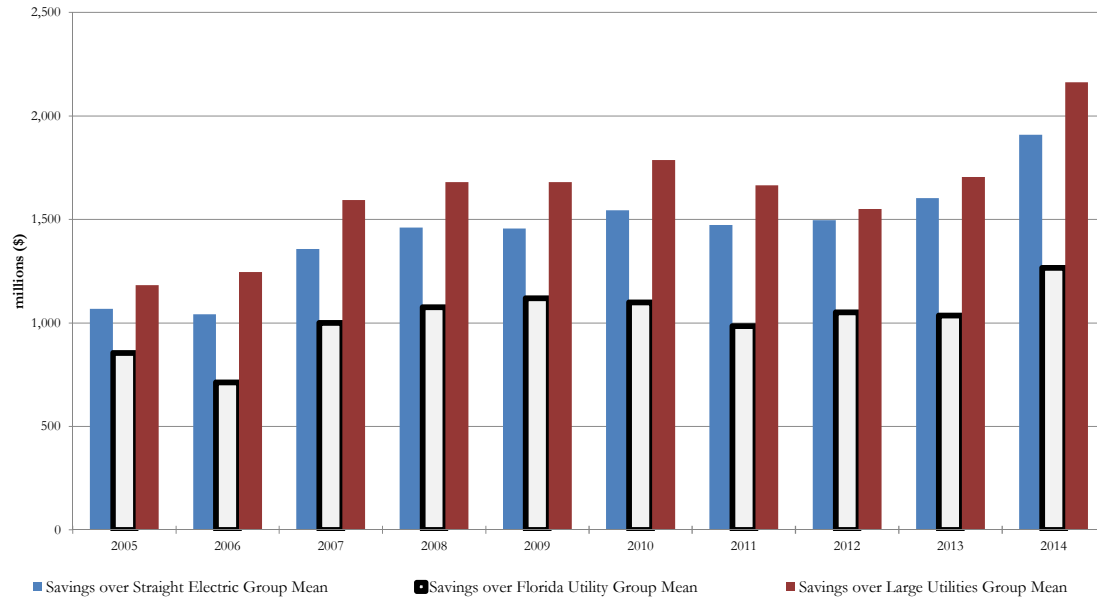
Florida Power & Light Company	10/15	Florida Power & Light Company	Docket No. 150001	Recovery of replacement power costs.
-------------------------------	-------	-------------------------------	-------------------	--------------------------------------

JJR-8, Page 1	Multiple	Replace all instances of “Annual Non-Fuel O&M Savings per Customer” with “Annual Non-Fuel O&M Total Customer Savings” throughout the exhibit as shown in attached Updated Exhibit JJR-8, Page 1 of 1
------------------	----------	--



SPONSOR	DATE	CASE/APPLICANT	DOCKET NO.	SUBJECT
Florida Power and Light Co.	5/08	Florida Power & Light Co.	Docket No. 080009-EI	New Nuclear Cost Recovery, Prudence
Florida Power and Light Co.	3/09	Florida Power & Light Co.	Docket No. 080677-EI	Benchmarking in Support of ROE
Florida Power and Light Co.	3/09 5/09 8/09	Florida Power & Light Co.	Docket No. 090009-EI	New Nuclear Cost Recovery, Prudence
Florida Power and Light Co.	3/10 5/10 8/10	Florida Power & Light Co.	Docket No. 100009-EI	New Nuclear Cost Recovery, Prudence
Florida Power and Light Co.	3/11 7/11	Florida Power & Light Co.	Docket No. 110009-EI	New Nuclear Cost Recovery, Prudence
Florida Power and Light Co.	3/12 7/12	Florida Power & Light Co.	Docket No. 120009-EI	New Nuclear Cost Recovery, Prudence
Florida Power and Light Co.	3/12 8/12	Florida Power & Light Co.	Docket No. 120015-EI	Benchmarking in Support of ROE
Florida Power and Light Co.	3/13 7/13	Florida Power & Light Co.	Docket No. 130009	New Nuclear Cost Recovery, Prudence
Florida Power and Light Co.	3/14	Florida Power & Light Co.	Docket No. 140009	New Nuclear Cost Recovery, Prudence
Florida Power and Light Co.	3/15 8/15	Florida Power & Light Co.	Docket No. 150009	New Nuclear Cost Recovery, Prudence
Florida Power and Light Co.	10/15	Florida Power & Light Co.	Docket No. 150001	Recovery of Replacement Power Costs
Florida Senate Committee on Communication, Energy and Utilities				
Florida Power and Light Co.	2/09	Florida Power & Light Co.		Securitization

Annual Non-Fuel O&M Total Customer Savings



Annual Non-Fuel O&M Total Customer Savings											
<i>Annual Savings (millions \$)</i>											
	2005	2006	2007	2008	2009	2010	2011	2012	2013	2014	Total
Savings over Straight Electric Group Mean	1,067	1,041	1,356	1,461	1,456	1,543	1,473	1,496	1,603	1,909	14,405
Savings over Florida Utility Group Mean	854	711	999	1,076	1,119	1,099	984	1,051	1,036	1,266	10,194
Savings over Large Utilities Group Mean	1,182	1,246	1,594	1,680	1,680	1,786	1,664	1,549	1,704	2,162	16,247

Source: SNL Interactive, FERC Form 1
 Total O&M Expenses less Fuel, Purchased Power, and Other; Total Ultimate Customers
 Based on Calculation of Total Non-Fuel O&M Expense per Customer

ERRATA SHEET

WITNESS: MARLENE M. SANTOS – DIRECT TESTIMONY AND EXHIBITS

<u>PAGE #</u>	<u>LINE #</u>	<u>CHANGE</u>
6	7	Change “97,000” to “94,000”
MMS-1, Page 1	10 (not numbered)	Add new row to bottom of “Co-Sponsor” table as shown below:

C-15	Historic Test Subsequent Year Adjustment	INDUSTRY ASSOCIATION DUES
------	--	---------------------------

ERRATA SHEET

WITNESS: **ROXANE R. KENNEDY – DIRECT TESTIMONY**

<u>PAGE #</u>	<u>LINE #</u>	<u>CHANGE</u>
21	21	Change “RRK-5” to “RRK-6”

ERRATA SHEET

WITNESS: ROSEMARY MORLEY – DIRECT TESTIMONY

<u>PAGE</u>	<u>LINE</u>	<u>CHANGE</u>
5	17	“compound” to “average”
5	17	“between 2011 and 2015” to “during the 2011 to 2015 period”
8	33	“are” to “are among”
10	20	“compound” to “average”
10	20	“between 2011 and 2015” to “during the 2011 to 2015 period”
20	19	“energy use” to “net energy for load”
36	17	“2011” to “2014”
36	20	“2011” to “2014”

ERRATA SHEET

WITNESS: ROSEMARY MORLEY – MFR F-5

<u>PAGE</u>	<u>LINE</u>	<u>CHANGE</u>
6	19	Adjusted R-Square value 0.931
6	20	Durbin-Watson value 1.976
8	47	Dummy 1990 coefficient -0.296 and T ratio -8.155
8	48	Dummy 2005 coefficient 0.171 and T ratio 3.196

Note: This MFR correction is not addressed in, or the result of, the Notices of Identified Adjustment provided in Exhibit KO-19, and therefore is being addressed here. The information set forth above for the errata to MFR F-5 was provided in FPL's response to OPC's First Request for Production, No. 2 (file name *Peak and Energy Jan2016 TYSP LT Price True-Up.xlsx*), served on April 18, 2016.

ERRATA SHEET

WITNESS: **KEITH FERGUSON – DIRECT TESTIMONY**

<u>PAGE #</u>	<u>LINE #</u>	<u>CHANGE</u>
11	15	Insert “and Commission practice” after “Rule 25-6.0436, F.A.C.”
12	9	Change “August” to “September”

ERRATA SHEET

WITNESS: NED W. ALLIS – DIRECT TESTIMONY AND EXHIBITS

DIRECT TESTIMONY

<u>PAGE #</u>	<u>LINE #</u>	<u>CHANGE</u>
31	10-12	Should read “For the existing <u>Lauderdale and Ft. Myers</u> gas turbines, an economic recovery date of 2028 is recommended, which corresponds to a 57 year life span.”
42	19	Should read “calculation of average remaining life used in the <u>2009</u> Depreciation Study.”
43	14	Should read “for this account can be found on Exhibit NWA-1, pages <u>XI-39</u> and <u>XI-40</u> .”
43	17	Should read “Exhibit NWA-1, page VI- <u>17</u> .”
44	1	Should read “ tabulations presented on Exhibit NWA-1, pages <u>IX-204</u> and <u>IX-205</u> .”

EXHIBIT NWA-1

<u>PAGE #</u>	<u>LINE #</u>	<u>CHANGE</u>
X-7	Paragraph 3, Sentence 3	Should read “Under full-load conditions the boiler <u>burns 322</u> ”
XI-17	Service Life Analysis: Discussion: Paragraph 1, Sentence 1:	Should read “In the 2009 depreciation study the 60- <u>L3</u> survivor curve was”
XI-40	Net Salvage Analysis: Discussion: Paragraph 1, Sentence 1:	Should read “In the 2009 depreication study the recommendation was for <u>(25)</u> percent net salvage,”
XI-43	Account 369.7 (FERC): Services – Underground	Should read “Account <u>369.6</u> (FERC): Services – Underground”
XI-54	Service Life Analysis: Discussion: Paragraph 1, Sentence 1:	Should read “The recommendation in the 2009 depreciation study was the 6- <u>L2</u> survivor curve,”
	Paragraph 2:	Should read “The statistical analysis indicated that the 6-L2.5 survivor curve is a <u>better</u> fit of the historical data <u>than the currently approved 6-L2 survivor curve</u> .”

EXHIBIT NWA-1 (CONTINUED)

<u>PAGE #</u>	<u>LINE #</u>	<u>CHANGE</u>
XI-54	Service Life Analysis: Recommendation:	Should read “Continue to use <u>currently approved 6 year average service life, but change the curve type to the L2.5.</u> ”
XI-58	Net Salvage Analysis: Discussion:	Paragraph 1, Sentence 1: Should read “In the 2009 depreciation study the estimated net salvage was <u>30</u> percent,”
XI-59	Service Life Analysis: Discussion:	Paragraph 1, Sentence 1: Should read “The recommendation in the 2009 depreciation study was the <u>10-L0.5</u> survivor curve,” Paragraph 1, Sentence 4: Should read “ <u>The 11-L1.5 survivor curve is a better fit of the historical data than the currently approved 10-L0.5.</u> ”
XI-59	Service Life Analysis: Recommendation:	Should read “ <u>The recommendation is the 11-L1.5 survivor curve.</u> ”

ERRATA SHEET

WITNESS: NED W. ALLIS – REBUTTAL TESTIMONY AND EXHIBITS

REBUTTAL TESTIMONY

<u>PAGE #</u>	<u>LINE #</u>	<u>CHANGE</u>
20	Footnote 20	It should read “My estimate in the 2016 <u>Depreciation Study...</u> ”
39	4	It should read “these plants are located in regions of the country that <u>are quite different from</u> ”
47	1	It should read “production plants to account for their changes in <u>estimates for interim retirements.</u> ”
59	Footnote 36	It should read “See OPC’s response to FPL’s <u>Second Set of Interrogatories, No. 25.</u> ”

EXHIBIT NWA-3

<u>PAGE #</u>	<u>LINE #</u>	<u>CHANGE</u>
3	Third Paragraph, Line 10	Should read “ be need to be replaced.”

21 Figure 10 Replace the figure with:

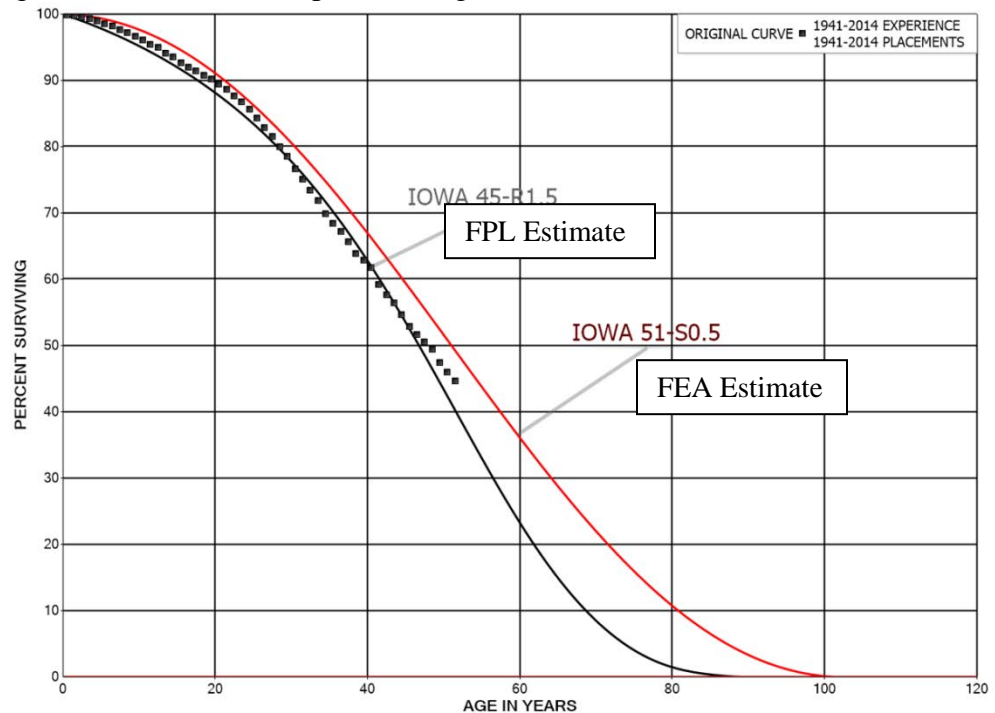


EXHIBIT NWA-4

<u>PAGE #</u>	<u>LINE #</u>	<u>CHANGE</u>
16	First full paragraph, second line	It should read “illustrates the overall trend in remove costs and shows that cost of removal has been <u>higher</u> than”
17	First full paragraph, ninth line	It should read “than in other years. In fact, the <u>net salvage</u> since the implementation of the storm hardening”
31	Footnote 26	It should read “ <u>Please note that negative net salvage values are shown as positive in this graph.</u> ”
30	Paragraph 2, Sentence 2	Should read “FEA has proposed the <u>57-R1</u> ”
30	Paragraph 2, Sentence 4	It should read “FEA’s estimate is an increase in average service life of <u>sixteen</u> years.”
33	xi. Account 376.6 Underground Conductors and Devices – Duct System	Should read “xi. Account <u>367.6</u> Underground Conductors and Devices – Duct System”

ERRATA SHEET

WITNESS: **SAM FORREST – DIRECT TESTIMONY AND EXHIBITS**

<u>PAGE #</u>	<u>LINE #</u>	<u>CHANGE</u>
14	10	Change "\$0.97/MWh" to "\$0.65/MWh"
14	14	After "160021-EI", add " ,as well as FPL's decision to remove from the calculation \$0.32/MWh related to CT parts depreciation."

ERRATA SHEET

WITNESS: SAM FORREST – REBUTTAL TESTIMONY (FILED JULY 8)

<u>PAGE #</u>	<u>LINE #</u>	<u>CHANGE</u>
20	9	Change “\$0.97/MWh” to “\$0.65/MWh” and “\$0.97” to “\$0.65”
20	10	Change “\$1.94” to “\$1.30”
20	11	Both instances change “\$0.97” to “\$0.65”

ERRATA SHEET

WITNESS: **ROBERT B. HEVERT – DIRECT TESTIMONY**

<u>PAGE #</u>	<u>LINE #</u>	<u>CHANGE</u>
51	13	Replace “The price of FPL shares” with “The value of FPL equity”

ERRATA SHEET

WITNESS: MORAY DEWHURST –DIRECT TESTIMONY

<u>PAGE #</u>	<u>LINE #</u>	<u>CHANGE</u>
18	16	Strike extra period.
28	18-19	Change “p. 32” to “p. 35”

ERRATA SHEET

WITNESS: MORAY DEWHURST – REBUTTAL TESTIMONY

<u>PAGE #</u>	<u>LINE #</u>	<u>CHANGE</u>
16	11-12	“Mr. O’Donnell then applies this arbitrary 25 basis points to FPL’s entire outstanding debt balance of \$8 billion” Should read: “Mr. O’Donnell fails to apply this arbitrary 25 basis points to FPL’s current outstanding debt balance of about \$10 billion”
16	18-19	“second is the application of this increase to FPL’s current outstanding debt balance” Should read: “second is the failure to apply this increase to FPL’s current outstanding debt balance”
29	22	Change “Lawton’s” to “Gorman’s”
30	1	Move end quotation marks to following “rating”
36	9	Change “textbook” to “textbooks”
40	17	Change “or” to “of”
42	3	Change “challenged” to “challenging”
63	4	Change “ox” to “or”
66	3	Change “If certainly would” to “It certainly would”

ERRATA SHEET

WITNESS: **RENAE B. DEATON – DIRECT TESTIMONY AND EXHIBITS**

<u>PAGE #</u>	<u>LINE #</u>	<u>CHANGE</u>
RBD-2, Page 2	Row 7 (not numbered)	“City of Seminole” to “Seminole Electric Cooperative, Inc.”
RBD-3, Page 1	Row 15 (not numbered)	“City of Seminole, FL” to “Seminole Electric Cooperative, Inc.”