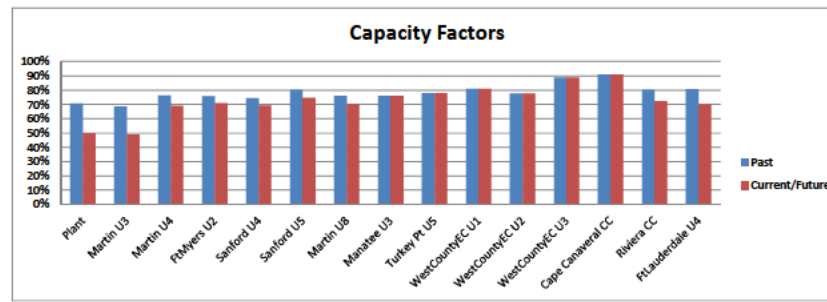


Florida Power and Light Company  
Analysis of Service Hours on Average Service Life for New CSP Components

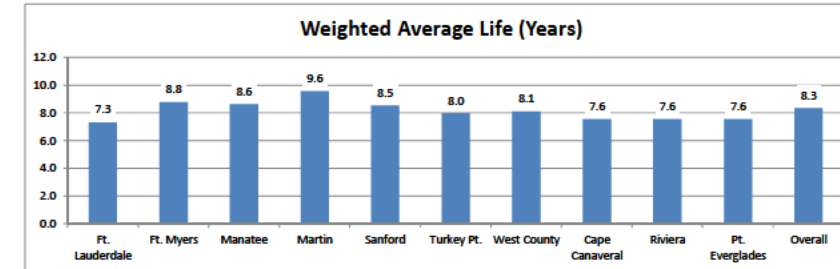
Group Number	Unit	OEM	2016 Balance	Past Service	Future Service	Past Capacity	Future	Adjustment	Average Service	Average Service	Life x Cost
				Hours	Hours	Factor	Capacity	Factor	Life Adjusted for	Adi. for Interval	
				2010-2014	2015-2020		Factor	Factor	Interval Length	Length + Capacity	
30200	FtLauderdale Comm	Siemens - LaudCC	27,492,030.11	7,066	6,245	81%	71%	113%	6.50	7.35	202,187,016
30201	FtLauderdale U4	Siemens - LaudCC	72,208,475.15	7,048	6,352	80%	73%	111%	6.50	7.21	520,808,625
30202	FtLauderdale U5	Siemens - LaudCC	26,261,798.66	7,083	6,138	81%	70%	115%	6.50	7.50	196,993,994
30300	FtMyers Comm	GE	441,576.73	6,684	6,061	76%	69%	110%	7.98	8.80	3,885,298
30301	FtMyers U2	GE	302,123,630.85	6,684	6,061	76%	69%	110%	7.98	8.80	2,658,293,092
30401	Manatee U3	GE	146,248,667.56	6,663	6,149	76%	70%	108%	7.98	8.64	1,264,138,207
30500	Martin Comm	GE	60,578,025.32	6,419	5,079	73%	58%	126%	7.98	10.08	610,838,307
30502	Martin U3	GE	38,393,527.43	6,189	4,396	71%	50%	141%	7.98	11.23	431,301,224
30503	Martin U4	GE	71,428,237.23	6,018	4,293	69%	49%	140%	7.98	11.18	798,804,193
30504	Martin U8	GE	213,276,993.65	7,050	6,547	80%	75%	108%	7.98	8.59	1,832,089,101
30701	Sanford U4	GE	208,145,980.74	6,638	6,209	76%	71%	107%	7.98	8.53	1,775,209,555
30702	Sanford U5	GE	58,298,865.23	6,532	6,071	75%	69%	108%	7.98	8.58	500,470,983
30801	Turkey Pt U5	GE	128,220,285.16	6,660	6,693	76%	76%	100%	7.98	7.98	1,022,941,638
30900	WestCountyEC Comm	Mitsubishi	116,862,650.79	6,914	6,930	79%	79%	100%	8.12	8.12	948,957,035
30901	WestCountyEC U1	Mitsubishi	93,023,482.50	6,846	7,028	78%	78%	100%	8.12	8.12	755,376,397
30902	WestCountyEC U2	Mitsubishi	121,595,583.20	7,095	6,796	81%	81%	100%	8.12	8.12	987,389,754
30903	WestCountyEC U3	Mitsubishi	125,720,636.63	6,802	6,967	78%	78%	100%	8.12	8.12	1,020,886,329
31001	Cape Canaveral CC	Siemens	206,255,249.11	7,782	7,660	89%	89%	100%	7.56	7.56	1,558,794,573
31101	Riviera CC	Siemens	139,494,632.66	7,989	7,904	91%	91%	100%	7.56	7.56	1,054,244,570
31201	Pt Everglades CC	Siemens	191,363,195.90	7,868	7,868	90%	90%	100%	7.56	7.56	1,446,246,399
<b>Grand Total</b>			<b>2,347,433,524.60</b>								<b>19,589,856,289</b>

19,589,856,289  
8.3452 ← Adjusted Average Service Life

Plant	Past	Current/Future
Martin U3	71%	50%
Martin U4	69%	49%
FtMyers U2	76%	69%
Sanford U4	76%	71%
Sanford U5	75%	69%
Martin U8	80%	75%
Manatee U3	76%	70%
Turkey Pt U5	76%	76%
WestCountyEC U1	78%	78%
WestCountyEC U2	81%	81%
WestCountyEC U3	78%	78%
Cape Canaveral CC	89%	89%
Riviera CC	91%	91%
FtLauderdale U4	80%	73%
FtLauderdale U5	81%	70%



Plant	Weighted Average Life
Ft. Lauderdale	7.3
Ft. Myers	8.8
Manatee	8.6
Martin	9.6
Sanford	8.5
Turkey Pt.	8.0
West County	8.1
Cape Canaveral	7.6
Riviera	7.6
Pt. Everglades	7.6
Overall	8.3



Florida Power and Light Company  
Analysis of Interval Length on Average Service Life for New CSP Components

6.5 Historical Average Service Life (based on statistical analysis)

GE	CSP Part	2016 Balance	ASL (Historical)	Interval Length (thousand hours)		Pct Change	ASL - Future Interval	ASL x Cost Weight	Total Life x Cost Weight
				Past/Current	Future				
		<b>1,228,415,691.94</b>							<b>9,800,302,331</b>
145.0252	TRANSITION NOZZLE	40,370,580.64	6.5	24			8.67	349,878,366	
145.0255	COMPRESSOR ROTOR/WHEEL	301,940,918.20	6.5	144			7.56	2,283,368,448	
145.0257	COMPRESSOR BLADES (ROTAT	78,041,943.32	6.5	144			7.64	596,237,484	
145.0258	COMPRESSOR BLADES (STATI	126,076,690.41	6.5	144			7.64	963,221,129	
145.0259	BURNER BASKET	298,648.76	6.5	24			6.50	1,941,217	
145.0263	FUEL NOZZLE	31,861,310.35	6.5	24			8.67	276,131,356	
145.0265	COMBUSTOR LINER	28,691,925.06	6.5	24			8.67	248,663,351	
145.0266	TURBINE ROTOR/WHEEL	135,512,076.15	6.5	144			6.50	880,828,495	
145.0268	TURBINE BLADES (ROTATING	224,970,133.67	6.5	24			8.67	1,949,741,158	
145.0269	TURBINE BLADES(STATIONAR	159,323,133.52	6.5	24			8.67	1,380,800,491	
145.0270	TURBINE SHROUD SEALS	44,012,572.50	6.5	24			8.67	381,442,295	
145.0271	END COVERS	11,566,579.18	6.5	24			8.67	100,243,686	
145.0272	COMBUSTOR CAPS	23,115,298.34	6.5	24			8.67	200,332,586	
145.0273	FORWARD CASINGS	4,687,083.29	6.5	24			8.67	40,621,389	
145.0274	FLOW SLEEVES	9,727,167.38	6.5	24			8.67	84,302,117	
145.0279	BEARING ASSEMBLY	8,219,631.16	6.5	48			7.61	62,548,764	
<b>Mitsubishi</b>		<b>457,202,353.11</b>							<b>3,712,609,515</b>
145.0252	TRANSITION NOZZLE	25,786,375.38	6.5	12			13.00	335,222,880	
145.0254	CROSS FLAME TUBES	20,500,680.47	6.5	12			13.00	266,508,846	
145.0255	COMPRESSOR ROTOR/WHEEL	55,428,510.53	6.5	96			6.50	360,285,318	
145.0257	COMPRESSOR BLADES (ROTAT	34,327,930.80	6.5	96			6.50	223,131,550	
145.0258	COMPRESSOR BLADES (STATI	40,898,201.73	6.5	96			6.50	265,838,311	
145.0259	BURNER BASKET	4,931,501.43	6.5	12			13.00	64,109,519	
145.0260	INTERSTAGE SEAL ASSY	4,919,916.64	6.5	24			6.50	31,979,458	
145.0263	FUEL NOZZLE	10,694,640.91	6.5	12			13.00	139,030,332	
145.0265	COMBUSTOR LINER	8,492,862.47	6.5	12			13.00	110,407,212	
145.0266	TURBINE ROTOR/WHEEL	55,428,510.53	6.5	96			6.50	360,285,318	
145.0268	TURBINE BLADES (ROTATING	77,320,431.49	6.5	24			6.50	502,582,805	
145.0269	TURBINE BLADES(STATIONAR	58,128,067.79	6.5	24			6.50	377,832,441	
145.0270	TURBINE SHROUD SEALS	10,738,010.65	6.5	24			6.50	69,797,069	
145.0271	END COVERS	8,015,100.31	6.5	12			13.00	104,196,304	
145.0272	COMBUSTOR CAPS	11,478,830.21	6.5	12			13.00	149,224,793	
145.0273	FORWARD CASINGS	8,017,645.97	6.5	12			13.00	104,229,398	
145.0274	FLOW SLEEVES	4,875,863.56	6.5	12			13.00	63,386,226	
145.0275	BLADE RING	3,649,188.94	6.5	24			6.50	23,719,728	
145.0277	COMBUSTR SWIRLR HLDR	7,868,175.33	6.5	12			13.00	102,286,279	
145.0279	BEARING ASSEMBLY	2,395,242.54	6.5	48			6.50	15,569,076	
145.0280	TRAN SEALS (INNER & OUT	3,306,665.42	6.5	12			13.00	42,986,650	
<b>Siemens</b>		<b>535,853,175.63</b>							<b>4,049,763,707</b>
145.0252	TRANSITION NOZZLE	27,759,137.10	6.5	12			13.54	375,904,982	
145.0255	COMPRESSOR ROTOR/WHEEL	45,822,161.84	6.5	96			6.50	297,844,052	
145.0257	COMPRESSOR BLADES (ROTAT	30,713,367.58	6.5	96			6.50	199,636,889	
145.0258	COMPRESSOR BLADES (STATI	52,574,681.72	6.5	96			6.50	341,735,431	
145.0259	BURNER BASKET	5,128,382.49	6.5	12			13.54	69,446,846	
145.0260	INTERSTAGE SEAL ASSY	5,681,293.12	6.5	24			6.77	38,467,089	
145.0263	FUEL NOZZLE	21,655,402.66	6.5	12			13.54	293,250,244	
145.0265	COMBUSTOR LINER	1,974,342.54	6.5	12			13.54	26,735,889	
145.0266	TURBINE ROTOR/WHEEL	63,701,586.14	6.5	96			6.50	414,060,310	
145.0268	TURBINE BLADES (ROTATING	139,630,158.51	6.5	24			6.77	945,412,532	
145.0269	TURBINE BLADES(STATIONAR	96,912,562.24	6.5	24			6.77	656,178,807	
145.0270	TURBINE SHROUD SEALS	24,385,526.52	6.5	24			6.77	165,110,336	
145.0271	END COVERS	252,115.53	6.5	12			13.54	3,414,065	
145.0272	COMBUSTOR CAPS	1,777,700.50	6.5	12			13.54	24,073,028	
145.0273	FORWARD CASINGS	3,177,698.59	6.5	12			13.54	43,031,335	
145.0274	FLOW SLEEVES	5,663,799.15	6.5	12			13.54	76,697,280	
145.0275	BLADE RING	1,552,677.15	6.5	24			6.77	10,512,918	
145.0276	COMP/TURB ROTOR WBLAD	1,361,997.48	6.5	48			6.77	9,221,858	
145.0279	BEARING ASSEMBLY	3,538,919.51	6.5	48			6.77	23,961,434	
145.0280	TRAN SEALS (INNER & OUT	2,589,665.26	6.5	12			13.54	35,068,384	
<b>Siemens - LaudCC</b>		<b>125,962,303.92</b>							<b>818,754,975</b>
145.0252	TRANSITION NOZZLE	7,986,715.96	6.5	12			6.50	51,913,654	
145.0255	COMPRESSOR ROTOR/WHEEL	25,131,926.75	6.5	48			6.50	163,357,524	
145.0257	COMPRESSOR BLADES (ROTAT	9,538,402.49	6.5	24			6.50	61,999,616	
145.0258	COMPRESSOR BLADES (STATI	19,765,597.72	6.5	24			6.50	128,476,385	
145.0259	BURNER BASKET	3,787,116.70	6.5	12			6.50	24,616,259	
145.0260	INTERSTAGE SEAL ASSY	878,421.27	6.5	24			6.50	5,709,738	
145.0263	FUEL NOZZLE	2,582,539.77	6.5	24			6.50	16,786,508	
145.0266	TURBINE ROTOR/WHEEL	4,211,011.43	6.5	48			6.50	27,371,574	
145.0268	TURBINE BLADES (ROTATING	21,556,319.98	6.5	24			6.50	140,116,080	
145.0269	TURBINE BLADES(STATIONAR	25,833,872.44	6.5	24			6.50	167,920,171	
145.0270	TURBINE SHROUD SEALS	4,333,632.59	6.5	24			6.50	28,168,612	
145.0272	COMBUSTOR CAPS	0.00							
145.0275	BLADE RING	113,896.70	6.5	24			6.50	740,329	
145.0279	BEARING ASSEMBLY	183,572.01	6.5	48			6.50	1,193,218	
145.0280	TRAN SEALS (INNER & OUT	59,278.11	6.5	12			6.50	385,308	
<b>Grand Total</b>		<b>2,347,433,524.60</b>							<b>18,381,430,528</b>

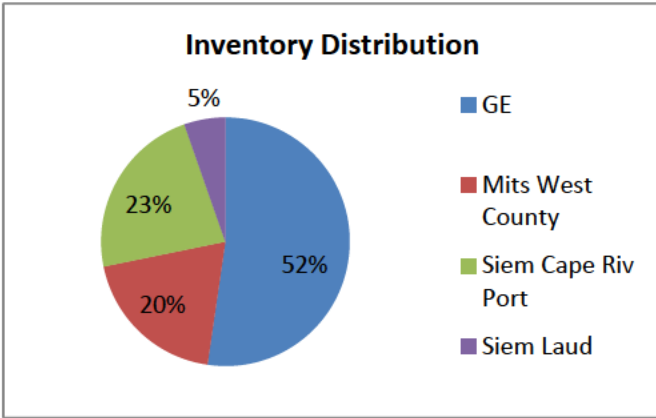
Manufacturer	ASL x Cost Weight	2017 Balance	Weighted ASL for new intervals	7.830 Weighted ASL for new intervals
ALL	18,381,430,528	2,347,433,525	7.83	
GE	9,800,302,331	1,228,415,692	7.98	
Mitsubishi	3,712,609,515	457,202,353	8.12	
Siemens	4,049,763,707	535,853,176	7.56	
Siemens - LaudCC	818,754,975	125,962,304	6.50	

OPC 030078  
FPL RC-16

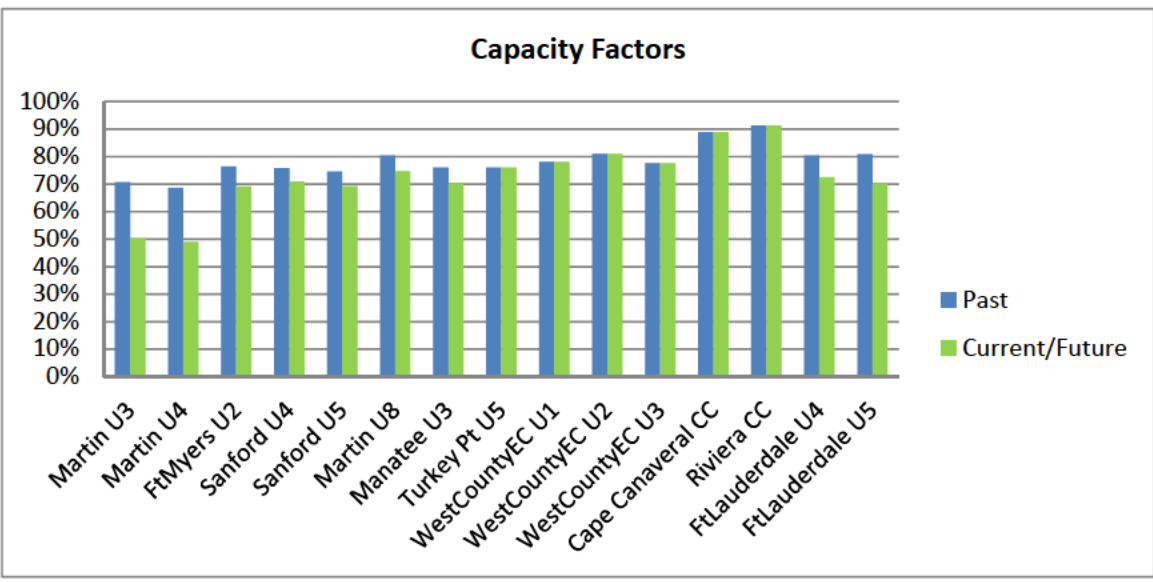
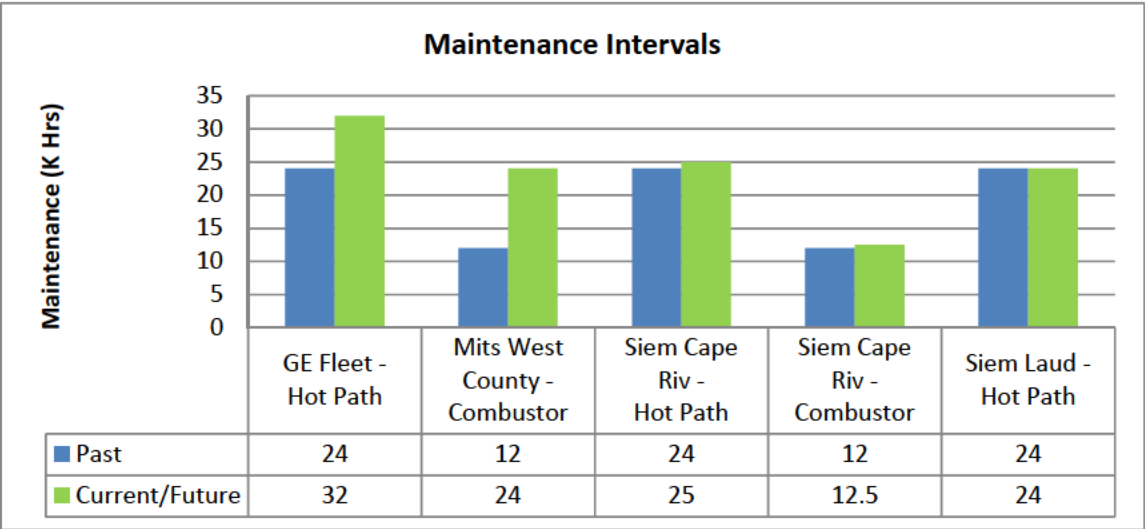
CSP Part / Group	2016 Balance	Pct in 2017	Pct Prior to 2017	03 Hours	05 Hours	Weighted Avg	Weight x Hours	Total Weight x Hours	Average Interval Length
<b>145.0255 : COMPRESSOR ROTOR/WHEEL</b>	<b>301,940,918.20</b>							<b>50,585,393,311</b>	<b>167.53</b>
30300	0.00	0%	100%	144	192	192.00	-		
30301	55,020,764.08	0%	100%	144	192	192.00	10,563,986,703		
30401	60,815,130.55	100%	0%	144	192	144.00	8,757,378,799		
30500	0.00	0%	100%	144	192	192.00	-		
30502	12,848,285.10	0%	100%	144	192	192.00	2,466,870,739		
30503	4,385,132.63	0%	100%	144	192	192.00	841,945,465		
30504	50,481,137.08	50%	50%	144	192	168.00	8,480,831,029		
30701	87,312,530.36	50%	50%	144	192	168.00	14,668,505,100		
30702	13,777,181.08	50%	50%	144	192	168.00	2,314,566,421		
30801	17,300,757.32	100%	0%	144	192	144.00	2,491,309,054		
<b>145.0257 : COMPRESSOR BLADES (ROTAT)</b>	<b>78,041,943.32</b>							<b>13,208,953,499</b>	<b>169.25</b>
30300	0.00	0%	100%	144	192	192.00	-		
30301	15,726,415.57	0%	100%	144	192	192.00	3,019,471,789		
30401	12,964,612.01	100%	0%	144	192	144.00	1,866,904,129		
30500	252,815.57	0%	100%	144	192	192.00	48,540,589		
30502	2,408,334.27	0%	100%	144	192	192.00	462,400,180		
30503	6,143,512.03	0%	100%	144	192	192.00	1,179,554,309		
30504	12,359,762.71	50%	50%	144	192	168.00	2,076,440,135		
30701	17,973,276.50	50%	50%	144	192	168.00	3,019,510,452		
30702	2,726,208.47	50%	50%	144	192	168.00	458,003,022		
30801	7,487,006.21	100%	0%	144	192	144.00	1,078,128,894		
<b>145.0258 : COMPRESSOR BLADES (STATI)</b>	<b>126,076,690.41</b>							<b>21,108,165,347</b>	<b>167.42</b>
30300	377,843.85	0%	100%	144	192	192.00	72,546,019		
30301	22,841,198.34	0%	100%	144	192	192.00	4,385,510,082		
30401	26,405,976.06	100%	0%	144	192	144.00	3,802,460,552		
30500	976,833.01	0%	100%	144	192	192.00	187,551,937		
30502	2,809,160.28	0%	100%	144	192	192.00	539,358,774		
30503	6,648,121.86	0%	100%	144	192	192.00	1,276,439,397		
30504	16,671,069.56	50%	50%	144	192	168.00	2,800,739,686		
30701	34,546,135.76	50%	50%	144	192	168.00	5,803,750,807		
30702	4,523,227.02	50%	50%	144	192	168.00	759,902,139		
30801	10,277,124.68	100%	0%	144	192	144.00	1,479,905,954		
<b>145.0279 : BEARING ASSEMBLY</b>	<b>8,219,631.16</b>							<b>461,898,562</b>	<b>56.19</b>
30301	1,056,949.61	0%	100%	48	64	64.00	67,644,775		
30401	1,082,206.30	100%	0%	48	64	48.00	51,945,902		
30500	832,904.37	0%	100%	48	64	64.00	53,305,880		
30502	115,648.81	0%	100%	48	64	64.00	7,401,524		
30503	953,727.52	0%	100%	48	64	64.00	61,038,561		
30504	762,546.07	50%	50%	48	64	56.00	42,702,580		
30701	1,719,164.40	50%	50%	48	64	56.00	96,273,206		
30702	19,362.16	50%	50%	48	64	56.00	1,084,281		
30801	1,677,121.91	100%	0%	48	64	48.00	80,501,852		
<b>Grand Total</b>	<b>514,279,183.09</b>								

Unit	Group	Pct of 05 Added in 2017	Pct Added Prior to 2017
FtMyers U2	30301	0%	100%
Manatee U3	30401	100%	0%
Martin U8	30504	50%	50%
Sanford U4	30701	50%	50%
Sanford U5	30702	50%	50%
Turkey Pt U5	30801	100%	0%
FtMyers Comm	30300	0%	100%
Martin Comm	30500	0%	100%
Martin U3	30502	0%	100%
Martin U4	30503	0%	100%

Florida Power and Light Company  
Capital Spare Part Depreciation Summary



	(\$MM)
GE	1228
Mitsubishi	457
Siem Cape Riv Ever	536
Siem Laud	126
	2347



OPC 030080  
FPL RC-16

Plant	Plant-Unit	Category	UNIT/NO	2009	2010	2011	2012	2013	2014	2015	2016	2017	2018	2019	2020	2021	2022	2010-2014	2010-2014	2015-2020	2015-2020	Change
																		AVG SH	AVG CF	AVG SH	AVG CF	
Lauderdale	FtLauderdale U4	Siem Laud	PFL 4A	7042	7220	7830	6961	7779	5888	7604	5752	5792	6292	6266	6341	6089	6156	7135.6	81%	6341.1	72%	9%
Lauderdale	FtLauderdale U4	Siem Laud	PFL 4B	7352	5401	7800	6983	7894	6728	7604	5752	5912	6124	6424	6363	6115	6188	6961.4	79%	6363.1	73%	7%
Lauderdale	FtLauderdale U5	Siem Laud	PFL 5A	8220	7169	7925	6528	7188	7568	6884	6784	5792	4852	6376	6138	5988	5829	7275.8	83%	6137.5	70%	13%
Lauderdale	FtLauderdale U5	Siem Laud	PFL 5B	8166	6718	7215	6643	6306	7568	6884	6664	5912	4852	6376	6138	5988	5853	6890.0	79%	6137.5	70%	9%
FtMyers	FtMyers U2	GE7FA.04	PFM 2A	7463	7068	5820	7321	7079	6421	5400	6306	5997	6161	6057	5984	6101	6060	6741.7	77%	5984.1	68%	9%
FtMyers	FtMyers U2	GE7FA.04	PFM 2B	7741	7074	6464	7725	6441	5317	6288	6306	5997	6329	6047	6193	6174	6148	6604.4	75%	6193.4	71%	5%
FtMyers	FtMyers U2	GE7FA.04	PFM 2C	7203	7137	4932	7725	5912	6421	5400	6306	5997	6161	6057	5984	6101	6060	6425.3	73%	5984.1	68%	5%
FtMyers	FtMyers U2	GE7FA.04	PFM 2D	7558	7106	6260	7477	6618	5317	6288	6306	5997	6161	6014	6153	6126	6090	6555.6	75%	6153.1	70%	5%
FtMyers	FtMyers U2	GE7FA.04	PFM 2E	7621	7758	6130	7717	6456	6421	5400	6474	5997	6161	6090	6024	6149	6084	6896.4	79%	6024.4	69%	10%
FtMyers	FtMyers U2	GE7FA.04	PFM 2F	7535	7561	6307	7494	6621	6421	5232	6474	5997	6329	6090	6024	6183	6125	6880.9	79%	6024.4	69%	10%
Martin 3-4	Martin U3	GE PMG 3-4	PMG 3A	6912	5589	6426	7200	6050	5170	4307	4961	3416	3881	4347	4182	4158	3997	6087.4	69%	4182.5	48%	22%
Martin 3-4	Martin U3	GE PMG 3-4	PMG 3B	6952	6760	6894	7044	5589	5170	5075	5129	3416	4721	4702	4609	4516	4393	6291.4	72%	4608.7	53%	19%
Martin 3-4	Martin U4	GE PMG 3-4	PMG 4A	7278	7113	5886	6620	5550	3970	5075	5129	3752	3161	4218	4267	4105	3901	5827.8	67%	4267.0	49%	18%
Martin 3-4	Martin U4	GE PMG 3-4	PMG 4B	7323	7165	6628	6537	6737	3970	4907	5129	4136	3161	4261	4319	4201	4016	6207.4	71%	4318.8	49%	22%
Martin 8	Martin U8	GE7FA.04	PM8 8A	5704	6736	6483	7842	6641	6879	6194	6764	5231	7123	6438	6350	6381	6305	6916.3	79%	6350.0	72%	6%
Martin 8	Martin U8	GE7FA.04	PM8 8B	6610	7087	6975	7124	7464	7215	6194	7220	5231	6955	6563	6433	6480	6332	7172.9	82%	6432.6	73%	8%
Martin 8	Martin U8	GE7FA.04	PM8 8C	6390	6910	6823	7567	6948	7215	6866	7100	5639	7123	6789	6703	6671	6585	7092.6	81%	6703.3	77%	4%
Martin 8	Martin U8	GE7FA.04	PM8 8D	6487	6283	6558	7498	7531	7215	6866	7100	5639	7123	6789	6703	6671	6585	7017.1	80%	6703.3	77%	4%
Manatee	Manatee CC U3	GE7FA.04	PM3A	7540	6459	6238	6937	6538	6189	6633	5234	6173	6505	6147	6138	6040	6201	6472.3	74%	6138.4	70%	4%
Manatee	Manatee CC U3	GE7FA.04	PM3B	7420	7403	6194	7589	7539	5925	6633	5234	6173	6505	6094	6128	6027	6185	6929.9	79%	6127.9	70%	9%
Manatee	Manatee CC U3	GE7FA.04	PM3C	7851	6932	6537	7153	7097	6141	6465	5234	6341	6673	6171	6177	6119	6296	6771.9	77%	6176.8	71%	7%
Manatee	Manatee CC U3	GE7FA.04	PM3D	7887	6451	6349	7605	6387	5589	6465	5234	6341	6673	6060	6155	6093	6264	6476.4	74%	6154.7	70%	4%
Sanford	Sanford U4	GE7FA.04	PSR 4A	6365	7165	7122	7015	5223	6700	6443	5808	5614	6398	6193	6091	6021	6063	6645.1	76%	6091.2	70%	6%
Sanford	Sanford U4	GE7FA.04	PSR 4B	6853	7252	7170	7091	5330	6929	6681	6056	5535	6665	6373	6262	6178	6203	6754.2	77%	6262.2	71%	6%
Sanford	Sanford U4	GE7FA.04	PSR 4C	7010	6879	7089	7140	5181	5731	6484	5850	5994	6443	6100	6174	6112	6165	6403.8	73%	6174.3	70%	3%
Sanford	Sanford U4	GE7FA.04	PSR 4D	6950	6684	7170	7702	5365	6826	6574	5945	6092	6545	6396	6310	6258	6320	6749.2	77%	6310.3	72%	5%
Sanford	Sanford U5	GE7FA.04	PSR 5A	7920	7428	7707	5100	6939	6460	5435	6648	5782	5966	6058	5978	6087	5974	6726.9	77%	5978.0	68%	9%
Sanford	Sanford U5	GE7FA.04	PSR 5B	6969	6761	7011	5716	6916	6929	5673	6896	6039	6233	6354	6239	6352	6244	6666.5	76%	6239.1	71%	5%
Sanford	Sanford U5	GE7FA.04	PSR 5C	6796	7198	7548	5877	6556	6739	5476	6522	5826	6011	6115	5990	6093	6007	6783.5	77%	5989.9	68%	9%
Sanford	Sanford U5	GE7FA.04	PSR 5D	6956	5634	5596	4779	7168	6586	5566	6617	5924	6113	6161	6076	6178	6090	5952.5	68%	6076.1	69%	-1%
Turkey Pt	Turkey Pt U5	GE7FA.04	TP5A	7827	6832	5622	7134	7096	5930	6866	6841	6986	5978	6521	6639	6593	6544	6522.9	74%	6638.7	76%	-1%
Turkey Pt	Turkey Pt U5	GE7FA.04	TP5B	7663	6316	6636	7292	7225	5930	6866	6841	6986	5978	6521	6639	6593	6544	6679.9	76%	6638.7	76%	0%
Turkey Pt	Turkey Pt U5	GE7FA.04	TP5C	7435	6891	6330	7103	7486	5930	6986	7009	6986	6146	6612	6748	6700	6639	6748.0	77%	6748.2	77%	0%
Turkey Pt	Turkey Pt U5	GE7FA.04	TP5D	7442	6359	6844	7204	7104	5930	6986	7009	6986	6146	6612	6748	6700	6639	6688.4	76%	6748.2	77%	-1%
West County	WestCountyEC U1	Mits West Cty	PWC1A	2281	7074	6799	7730	7272	6291	7179	7202	6723	7179	6915	7040	7012	6974	7033.1	80%	7039.5	80%	0%
West County	WestCountyEC U1	Mits West Cty	PWC1B	2342	6698	6725	7674	6412	6339	7179	7034	6723	7179	6891	7001	6966	6952	6769.4	77%	7001.1	80%	-3%
West County	WestCountyEC U1	Mits West Cty	PWC1C	1876	5703	6736	7503	7348	6387	7179	7202	6723	7179	6934	7043	7016	6979	6735.3	77%	7043.3	80%	-4%
West County	WestCountyEC U2	Mits West Cty	PWC2A	815	7370	7515	7549	7094	6963	6219	7202	7179	6723	6857	6836	6959	6911	7298.1	83%	6836.0	78%	5%
West County	WestCountyEC U2	Mits West Cty	PWC2B	958	6658	6769	7070	6352	6963	6219	7034	7179	6555	6790	6755	6863	6828	6762.4	77%	6755.3	77%	0%
West County	WestCountyEC U2	Mits West Cty	PWC2C	897	7157	6767	7246	7987	6963	6219	7202	7179	6555	6824	6796	6911	6853	7223.9	82%	6795.7	78%	5%
West County	WestCountyEC U3	Mits West Cty	PWC3A			5181	8308	6978	6699	6843	6410	7347	7179	6896	6935	6953	7062	6791.6	78%	6934.9	79%	-2%
West County	WestCountyEC U3	Mits West Cty	PWC3B			5232	8446	6452	7107	7011	6410	7347	7179	7011	6992	6988	7103	6809.4	78%	6991.5	80%	-2%
West County	WestCountyEC U3	Mits West Cty	PWC3C			5249	8284	6994	6699	7011	6410	7347	7179	6929	6975	6968	7080	6806.3	78%	6975.2	80%	-2%
Cape	CapeCanaveral U1 CC	Siem Cape Riv Port	PCC3A	0				7782	7614	7803	7422	7782	7782	7680	7660	7670	7643	7781.7	89%	7660.2	87%	1%
Cape	CapeCanaveral U1 CC	Siem Cape Riv Port	PCC3B	0				7782	7614	7803	7422	7782	7782	7680	7660	7670	7643	7781.7	89%	7660.2	87%	1%
Cape	CapeCanaveral U1 CC	Siem Cape Riv Port	PCC3C	0				7782	7614	7803	7422	7782	7782	7680	7660	7670	7643	7781.7	89%	7660.2	87%	1%
Riviera	Riviera U1 CC	Siem Cape Riv Port	PRV5A	0				7877	7877	7899	8045	7685	7876	7876	7870	7827	7876.5	90%	7876.1	90%	0%	
Riviera	Riviera U1 CC	Siem Cape Riv Port	PRV5B	0				8045	8045	7899	8045	7685	7918	7887	7883	7843	8044.5	92%	7918.1	90%	1%	
Riviera	Riviera U1 CC	Siem Cape Riv Port	PRV5C	0				8045	8045	7899	8045	7685	7918	7887	7883	7843	8044.5	92%	7918.1	90%	1%	
Port Ev	PtEverglades U1	Siem Cape Riv Port	PE5A	0				7964				7772	7868	7820	7844	7832				7868.1	90%	-90%
Port Ev	PtEverglades U1	Siem Cape Riv Port	PE5B	0				7964				7772	7868	7820	7844	7832				7868.1	90%	-90%
Port Ev	PtEverglades U1	Siem Cape Riv Port	PE5C	0				7964				7772	7868	7820	7844	7832				7868.1	90%	-90%

OPC 030081  
FPL RC-16

Row Labels	Average of 2010-2014 AVG SH	Average of 2015-2020 AVG SH	Average of 2010-2014 AVG CF	Average of 2015-2020 AVG CF	Unit	2010-2014 Average Service Hours	2015-2020 Projected Average Service Hours	2010-2014 Average Capacity Factor	2015-2020 Projected Average Capacity Factor	Difference
CapeCanaveral U1 CC	7 781.70	7660.2072	89%	87%	Cape Canaveral CC	7 781.70	7 660.21	89%	87%	-1%
FLauderdale U4	7 048.46	6352.108183	80%	73%	FLauderdale U4	7 048.46	6 352.11	80%	73%	-8%
FLauderdale U5	7 082.88	6137.548183	81%	70%	FLauderdale U5	7 082.88	6 137.55	81%	70%	-11%
FLMyers U2	6 684.04	6060.592426	76%	69%	FLMyers U2	6 684.04	6 060.59	76%	69%	-7%
Manatee CC U3	6 662.62	6149.457944	76%	70%	Manatee U3	6 662.62	6 149.46	76%	70%	-6%
Martin U3	6 189.37	4395.595539	71%	50%	Martin U3	6 189.37	4 395.60	71%	50%	-20%
Martin U4	6 017.62	4292.875539	69%	49%	Martin U4	6 017.62	4 292.88	69%	49%	-20%
Martin U8	7 049.72	6547.31971	80%	75%	Martin U8	7 049.72	6 547.32	80%	75%	-6%
PIEverglades U1		7868.1	0%	90%	PI Everglades CC		7 868.10	0%	90%	90%
Riviera U1 CC	7 988.50	7904.125	91%	90%	Riviera CC	7 988.50	7 904.13	91%	90%	-1%
Sanford U4	6 638.09	6209.488427	76%	71%	Sanford U4	6 638.09	6 209.49	76%	71%	-5%
Sanford U5	6 532.33	6070.768427	75%	69%	Sanford U5	6 532.33	6 070.77	75%	69%	-5%
Turkey Pt U5	6 659.80	6693.438009	76%	76%	Turkey Pt U5	6 659.80	6 693.44	76%	76%	0%
WestCountyEC U1	6 845.95	7027.985678	78%	80%	WestCountyEC U1	6 845.95	7 027.99	78%	80%	2%
WestCountyEC U2	7 094.80	6795.665678	81%	78%	WestCountyEC U2	7 094.80	6 795.67	81%	78%	-3%
WestCountyEC U3	6 802.43	6967.185678	78%	80%	WestCountyEC U3	6 802.43	6 967.19	78%	80%	2%
<b>Grand Total</b>	<b>6,867.17</b>	<b>6501.375139</b>	<b>75%</b>	<b>74%</b>						