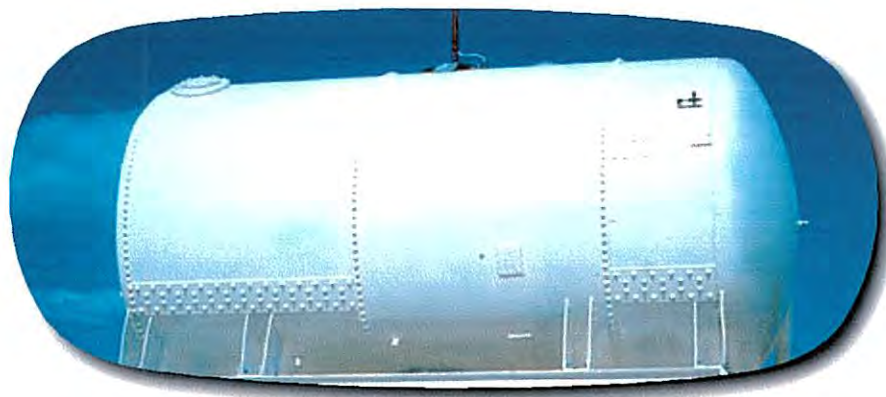


**HYDROPNEUMATIC TANK  
INSPECTION REPORT  
POLK COUNTY  
CYPRESS LAKES  
LAKELAND, FLORIDA**

*NORTH TANK*

**12,377 - GALLON HORIZONTAL  
HYDROPNEUMATIC WATER TANK  
8 FEET DIAMETER X 26 FEET LONG**

**March 25, 2014**



**CROWELL PLUMBING COMPANY, INC**

**7305 North Florida Avenue**

**Tampa, Florida 33604**

**(813) 232-0011**

**FAX (813) 237-0565**

RE: Inspection Report  
Cypress Lakes  
10000 U.S. Highway 98 North  
Lakeland, Florida 33809  
12,377 Gallon Hydropneumatic Tank  
Polk County - Lakeland, Florida

On March 25, 2014, Robert Crowell of Crowell Plumbing performed a condition assessment inspection on the above referenced water tank. After draining the tank, an internal and external inspection was performed. The purpose of this inspection was to assess the tank condition as required by Florida Department of Environmental Protection (FDEP) Rule 62-555.

#### EXECUTIVE SUMMARY

The tank shell and heads appear to be in good structural condition. Ultrasonic thickness Measurements (UTM's) were taken on the shell and heads. The average thickness of the shell at this time is 0.373". It appears there has been some minor metal loss since construction. The average remaining thickness of the heads is 0.413" indicating minimal metal loss. The exterior coating system is in good condition. The Mean interior coating thickness is 0 mil's. The interior coating has disintegrated in spots above and below the high water line, allowing corrosion. The interior should be abrasive blasted and painted within two years to prevent corrosion damage from becoming severe.

#### INSPECTION METHODOLOGY AND PROCEDURES

The tank inspection was performed in accordance with American Water Works Association (AWWA) Standards. Where no AWWA Standards were available, American Petroleum Institute (API) Standards for tank construction, inspection and repair were utilized. Also, Crowell Plumbing Company's written inspection procedures were followed.

#### DEFINITIONS:

Throughout this report, certain subjective terms will be used to describe the condition of various items. These terms are typically meant to imply the following definitions:

Good - Currently in nearly new condition. Minor defects may be present, but do not present a hindrance to the operation of the item.

Fair - Slightly less-than ideal condition. This item has not failed, but is in a state of degradation that will likely result in failure in the near future.

Poor - The item has failed, or is near failure.

#### FIELD INSPECTION:

The field inspection was performed in general accordance with AWWA, M42, Appendix "C", API Standard 653..

The average measured thickness acquired at the time of inspection was used for the calculations.

**Heads:**

p = pressure (psi)  
 E = joint efficiency (100%) (1-piece head)  
 L = Crown Radius ( 48 ")  
 t = Average thickness ( 0.413" )  
 s = AWWA Allowable Stress (15,000 psi)

$$p = \frac{SEt}{0.885L + 0.1t} = \frac{(15,000)(1)(0.413)}{0.885(48) + 0.1(0.413)} = 145 \text{ psi}$$

**Shell:**

p = pressure (psi)  
 E = Joint Efficiency (70%) (butt-welded joint)  
 t = average shell thickness ( 0.373 )  
 S = Allowable Stress (15,000 psi)  
 R - Tank Radius ( 48 ")

$$p = \frac{SEt}{R + 0.6t} = \frac{(15000)(70)(0.373)}{48" + (0.6)(0.373)} = 81 \text{ psi}$$

ASME offers a calculation for circumferential and for longitudinal stresses in the shell. The code requires using the lesser pressure of the two calculations. The above calculation is the circumferential calculation, which was less than the longitudinal calculation in this instance. This shell is butt welded with an unknown level of radiography, therefore, a joint efficiency of 70% must be used.

In this case the shell is the limiting factor for maximum pressure. In the calculations above, our information indicates a maximum working pressure of 81 psi.

#### CONCLUSIONS:

The tank is in overall fair structural condition. The metal loss on the internal weld seams should be investigated during the recommended interior abrasive blasting and painting. Based on the above calculations, the tank is suitable for service at a maximum working pressure of 81 psi. The pressure relief valve should be installed, checked and maintained at 81 psi or lower.

#### RECOMMENDATIONS:

1. The pressure relief valve should be tested and maintained at 81 psi or lower.
2. The interior should be abrasive blast cleaned and recoated with an NSF-approved interior coating system for potable water within two years. Typical coating systems are detailed in AWWA D102.
3. Following the abrasive blast, but before applying coatings, inspect the corroded areas for metal loss and pitting.

#### INSPECTION PERFORMED UNDER THE RESPONSIBLE CHARGE OF:

Gary Pailthorp, P.E.  
 FL. Cert. No. 35592  
 3315 Lacewood Rd.  
 Tampa, FL 33618  
 813-541-1775



Attachments: Photos  
 Reading Reports

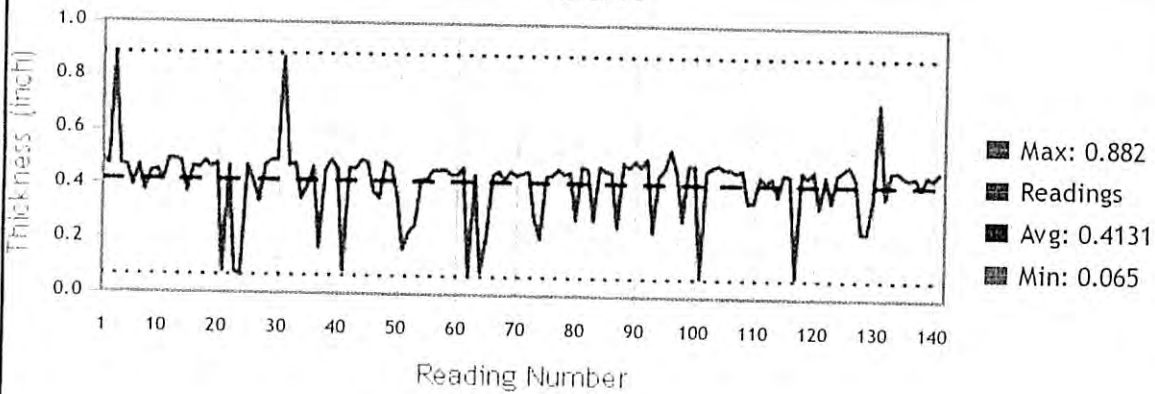
### Header

Batch Name: B8 Batch Date: 2014-03-25 15:51:12  
 Gage S/N: 736049  
 Probe Type: UTG-C Probe S/N: 222205  
 Cal: Cal 1 Substrate:  
 Batch Notes:

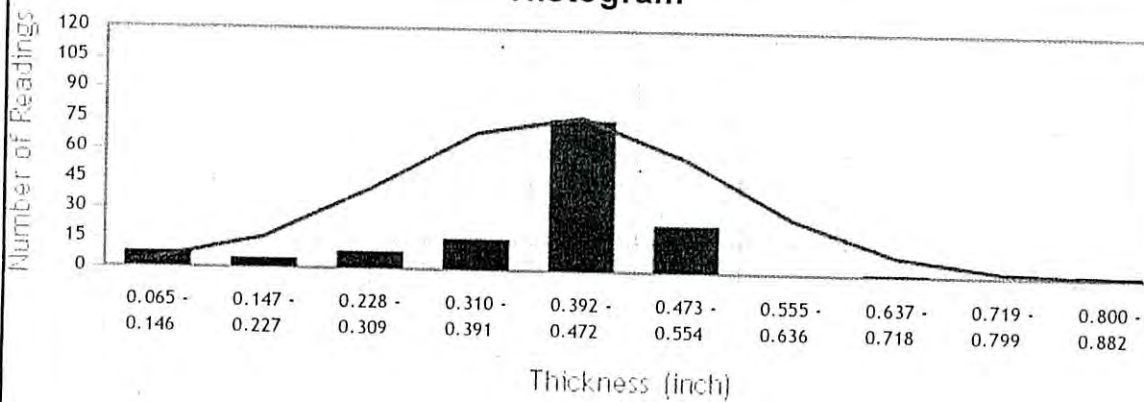
### Summary

	#	$\bar{x}$	$\sigma$	$\downarrow$	$\uparrow$
B8	141	0.4131	0.1253	0.065	0.882

### Chart



### Histogram



**Readings**

<b>Reading #</b>	<b>inch</b>	<b>Date/Time</b>	<b>Ignore</b>	<b>Notes</b>
1	0.486	2014-03-25 15:51:45		
2	0.468	2014-03-25 15:51:52		
3	0.882	2014-03-25 15:51:55		
4	0.469	2014-03-25 15:51:58		
5	0.463	2014-03-25 15:52:00		
6	0.391	2014-03-25 15:52:02		
7	0.466	2014-03-25 15:52:11		
8	0.372	2014-03-25 15:52:18		
9	0.443	2014-03-25 15:52:33		
10	0.451	2014-03-25 15:52:36		
11	0.410	2014-03-25 15:52:47		
12	0.491	2014-03-25 15:53:03		
13	0.487	2014-03-25 15:53:12		
14	0.481	2014-03-25 15:53:15		
15	0.368	2014-03-25 15:53:27		
16	0.463	2014-03-25 15:53:31		
17	0.456	2014-03-25 15:53:39		
18	0.482	2014-03-25 15:53:45		
19	0.460	2014-03-25 15:53:49		
20	0.473	2014-03-25 15:53:53		
21	0.078	2014-03-25 15:54:02		
22	0.465	2014-03-25 15:54:06		
23	0.076	2014-03-25 15:54:10		
24	0.065	2014-03-25 15:54:13		
25	0.467	2014-03-25 15:54:29		
26	0.411	2014-03-25 15:54:40		
27	0.336	2014-03-25 15:54:44		
28	0.469	2014-03-25 15:54:46		
29	0.486	2014-03-25 15:54:52		
30	0.486	2014-03-25 15:54:55		
31	0.867	2014-03-25 15:55:02		
32	0.466	2014-03-25 15:55:06		
33	0.477	2014-03-25 15:55:09		
34	0.347	2014-03-25 15:55:13		
35	0.390	2014-03-25 15:55:18		
36	0.464	2014-03-25 15:55:36		

Reading		Date/Time	Ignore	Notes
#	inch			
37	0.167	2014-03-25 15:55:38		
38	0.453	2014-03-25 15:55:40		
39	0.490	2014-03-25 15:55:51		
40	0.456	2014-03-25 15:56:17		
41	0.083	2014-03-25 15:56:23		
42	0.460	2014-03-25 15:56:26		
43	0.458	2014-03-25 15:56:30		
44	0.490	2014-03-25 15:56:32		
45	0.481	2014-03-25 15:56:36		
46	0.374	2014-03-25 15:56:38		
47	0.349	2014-03-25 15:56:42		
48	0.483	2014-03-25 15:56:45		
49	0.465	2014-03-25 15:56:49		
50	0.357	2014-03-25 15:56:56		
51	0.162	2014-03-25 15:57:39		
52	0.226	2014-03-25 15:57:41		
53	0.252	2014-03-25 15:57:50		
54	0.420	2014-03-25 15:57:55		
55	0.421	2014-03-25 15:57:58		
56	0.456	2014-03-25 15:58:01		
57	0.454	2014-03-25 15:58:08		
58	0.458	2014-03-25 15:58:22		
59	0.439	2014-03-25 15:58:28		
60	0.438	2014-03-25 15:58:33		
61	0.466	2014-03-25 15:58:38		
62	0.075	2014-03-25 15:58:47		
63	0.438	2014-03-25 15:59:03		
64	0.080	2014-03-25 15:59:09		
65	0.211	2014-03-25 15:59:12		
66	0.440	2014-03-25 16:00:37		
67	0.452	2014-03-25 16:00:41		
68	0.422	2014-03-25 16:00:50		
69	0.456	2014-03-25 16:00:53		
70	0.438	2014-03-25 16:01:07		
71	0.447	2014-03-25 16:01:09		
72	0.454	2014-03-25 16:01:13		
73	0.283	2014-03-25 16:01:18		
74	0.209	2014-03-25 16:01:21		
75	0.436	2014-03-25 16:01:27		

Reading		Date/Time	Ignore	Notes
#	inch			
76	0.440	2014-03-25 16:01:30		
77	0.465	2014-03-25 16:01:34		
78	0.445	2014-03-25 16:01:36		
79	0.453	2014-03-25 16:01:40		
80	0.281	2014-03-25 16:02:39		
81	0.475	2014-03-25 16:02:42		
82	0.464	2014-03-25 16:02:47		
83	0.277	2014-03-25 16:02:57		
84	0.475	2014-03-25 16:03:00		
85	0.459	2014-03-25 16:03:09		
86	0.454	2014-03-25 16:03:11		
87	0.252	2014-03-25 16:03:14		
88	0.488	2014-03-25 16:03:19		
89	0.472	2014-03-25 16:03:22		
90	0.496	2014-03-25 16:03:25		
91	0.475	2014-03-25 16:03:31		
92	0.507	2014-03-25 16:03:35		
93	0.235	2014-03-25 16:03:42		
94	0.444	2014-03-25 16:03:49		
95	0.469	2014-03-25 16:03:51		
96	0.539	2014-03-25 16:04:23		
97	0.458	2014-03-25 16:04:27		
98	0.279	2014-03-25 16:04:34		
99	0.483	2014-03-25 16:04:42		
100	0.479	2014-03-25 16:04:46		
101	0.074	2014-03-25 16:04:51		
102	0.463	2014-03-25 16:04:55		
103	0.478	2014-03-25 16:04:59		
104	0.486	2014-03-25 16:05:03		
105	0.471	2014-03-25 16:05:05		
106	0.471	2014-03-25 16:05:21		
107	0.459	2014-03-25 16:05:29		
108	0.470	2014-03-25 16:05:37		
109	0.347	2014-03-25 16:05:46		
110	0.350	2014-03-25 16:06:08		
111	0.443	2014-03-25 16:06:17		
112	0.424	2014-03-25 16:06:24		
113	0.440	2014-03-25 16:06:29		
114	0.373	2014-03-25 16:06:32		

Reading		Date/Time	Ignore	Notes
#	inch			
115	0.456	2014-03-25 16:06:39		
116	0.448	2014-03-25 16:06:41		
117	0.079	2014-03-25 16:06:50		
118	0.464	2014-03-25 16:06:52		
119	0.444	2014-03-25 16:07:02		
120	0.465	2014-03-25 16:07:04		
121	0.332	2014-03-25 16:07:10		
122	0.448	2014-03-25 16:07:12		
123	0.354	2014-03-25 16:07:14		
124	0.455	2014-03-25 16:07:22		
125	0.473	2014-03-25 16:07:36		
126	0.487	2014-03-25 16:07:40		
127	0.442	2014-03-25 16:07:48		
128	0.242	2014-03-25 16:08:00		
129	0.242	2014-03-25 16:08:07		
130	0.364	2014-03-25 16:08:21		
131	0.716	2014-03-25 16:08:35		
132	0.370	2014-03-25 16:08:39		
133	0.465	2014-03-25 16:08:46		
134	0.470	2014-03-25 16:08:59		
135	0.452	2014-03-25 16:09:05		
136	0.441	2014-03-25 16:09:09		
137	0.449	2014-03-25 16:09:26		
138	0.409	2014-03-25 16:09:36		
139	0.454	2014-03-25 16:09:38		
140	0.442	2014-03-25 16:09:45		
141	0.466	2014-03-25 16:09:51		

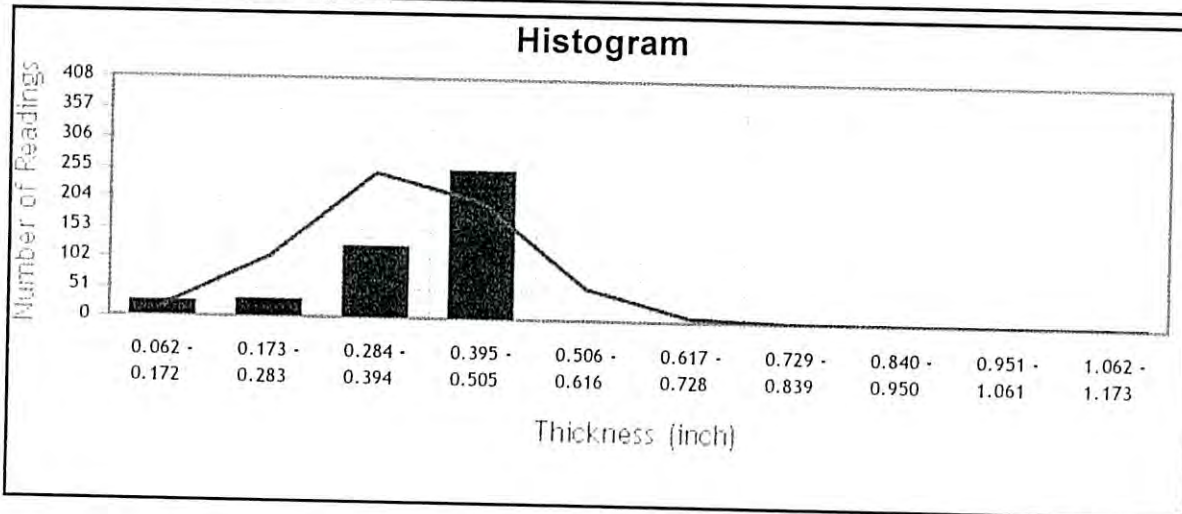
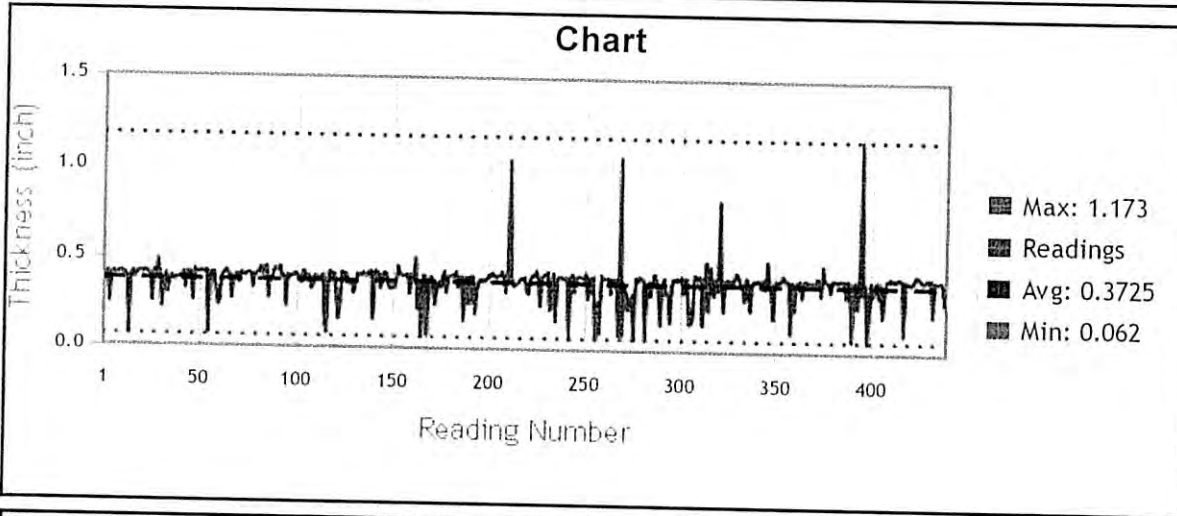


### Header

Batch Name:	B9	Batch Date:	2014-03-25 16:10:30
Gage S/N:	736049		
Probe Type:	UTG-C	Probe S/N:	222205
Cal:	Cal 1	Substrate:	
Batch Notes:			

### Summary

	#	Σ	σ	s	σ
B9	438	0.3725	0.1055	0.062	1.173



**Readings**

<b>Reading #</b>	<b>inch</b>	<b>Date/Time</b>	<b>Ignore</b>	<b>Notes</b>
1	0.361	2014-03-25 16:11:49		
2	0.367	2014-03-25 16:11:51		
3	0.413	2014-03-25 16:11:59		
4	0.242	2014-03-25 16:12:02		
5	0.398	2014-03-25 16:12:04		
6	0.409	2014-03-25 16:12:07		
7	0.401	2014-03-25 16:12:12		
8	0.403	2014-03-25 16:12:24		
9	0.405	2014-03-25 16:12:39		
10	0.413	2014-03-25 16:12:41		
11	0.401	2014-03-25 16:12:44		
12	0.403	2014-03-25 16:12:54		
13	0.382	2014-03-25 16:13:02		
14	0.066	2014-03-25 16:13:12		
15	0.384	2014-03-25 16:13:14		
16	0.414	2014-03-25 16:13:56		
17	0.378	2014-03-25 16:14:08		
18	0.396	2014-03-25 16:14:20		
19	0.413	2014-03-25 16:14:23		
20	0.412	2014-03-25 16:14:27		
21	0.405	2014-03-25 16:14:33		
22	0.417	2014-03-25 16:14:35		
23	0.414	2014-03-25 16:14:43		
24	0.398	2014-03-25 16:14:50		
25	0.401	2014-03-25 16:14:55		
26	0.248	2014-03-25 16:14:59		
27	0.419	2014-03-25 16:15:01		
28	0.389	2014-03-25 16:15:05		
29	0.479	2014-03-25 16:15:16		
30	0.378	2014-03-25 16:15:18		
31	0.218	2014-03-25 16:15:39		
32	0.329	2014-03-25 16:15:46		
33	0.398	2014-03-25 16:15:48		
34	0.296	2014-03-25 16:15:56		
35	0.367	2014-03-25 16:15:58		
36	0.390	2014-03-25 16:16:02		

Reading		Date/Time	Ignore	Notes
#	inch			
37	0.366	2014-03-25 16:16:42		
38	0.376	2014-03-25 16:16:44		
39	0.382	2014-03-25 16:16:48		
40	0.383	2014-03-25 16:16:52		
41	0.387	2014-03-25 16:16:55		
42	0.410	2014-03-25 16:17:06		
43	0.321	2014-03-25 16:17:10		
44	0.408	2014-03-25 16:17:12		
45	0.414	2014-03-25 16:17:26		
46	0.400	2014-03-25 16:17:28		
47	0.256	2014-03-25 16:17:38		
48	0.429	2014-03-25 16:17:40		
49	0.408	2014-03-25 16:17:51		
50	0.408	2014-03-25 16:17:53		
51	0.416	2014-03-25 16:17:55		
52	0.415	2014-03-25 16:18:00		
53	0.407	2014-03-25 16:18:02		
54	0.420	2014-03-25 16:18:10		
55	0.072	2014-03-25 16:18:17		
56	0.406	2014-03-25 16:18:23		
57	0.408	2014-03-25 16:18:28		
58	0.409	2014-03-25 16:18:31		
59	0.303	2014-03-25 16:19:19		
60	0.234	2014-03-25 16:19:22		
61	0.261	2014-03-25 16:19:55		
62	0.395	2014-03-25 16:19:59		
63	0.410	2014-03-25 16:20:02		
64	0.427	2014-03-25 16:20:04		
65	0.401	2014-03-25 16:20:12		
66	0.398	2014-03-25 16:20:20		
67	0.271	2014-03-25 16:20:26		
68	0.369	2014-03-25 16:20:29		
69	0.400	2014-03-25 16:20:33		
70	0.402	2014-03-25 16:20:45		
71	0.358	2014-03-25 16:20:49		
72	0.412	2014-03-25 16:21:27		
73	0.401	2014-03-25 16:21:29		
74	0.395	2014-03-25 16:21:35		
75	0.410	2014-03-25 16:21:39		

Reading		Date/Time	Ignore	Notes
#	inch			
76	0.412	2014-03-25 16:21:42		
77	0.405	2014-03-25 16:21:46		
78	0.330	2014-03-25 16:21:58		
79	0.405	2014-03-25 16:22:00		
80	0.403	2014-03-25 16:22:25		
81	0.424	2014-03-25 16:22:29		
82	0.443	2014-03-25 16:22:38		
83	0.401	2014-03-25 16:22:43		
84	0.428	2014-03-25 16:23:07		
85	0.450	2014-03-25 16:23:09		
86	0.276	2014-03-25 16:23:15		
87	0.388	2014-03-25 16:23:30		
88	0.379	2014-03-25 16:23:34		
89	0.435	2014-03-25 16:23:42		
90	0.437	2014-03-25 16:23:44		
91	0.425	2014-03-25 16:23:48		
92	0.448	2014-03-25 16:24:23		
93	0.389	2014-03-25 16:24:25		
94	0.394	2014-03-25 16:24:31		
95	0.232	2014-03-25 16:24:36		
96	0.403	2014-03-25 16:24:44		
97	0.386	2014-03-25 16:24:51		
98	0.391	2014-03-25 16:24:53		
99	0.405	2014-03-25 16:24:55		
100	0.410	2014-03-25 16:25:00		
101	0.391	2014-03-25 16:25:07		
102	0.393	2014-03-25 16:25:52		
103	0.356	2014-03-25 16:26:35		
104	0.425	2014-03-25 16:26:37		
105	0.410	2014-03-25 16:26:40		
106	0.369	2014-03-25 16:26:49		
107	0.397	2014-03-25 16:26:52		
108	0.328	2014-03-25 16:26:54		
109	0.344	2014-03-25 16:26:57		
110	0.398	2014-03-25 16:26:59		
111	0.391	2014-03-25 16:27:07		
112	0.391	2014-03-25 16:27:09		
113	0.367	2014-03-25 16:27:11		
114	0.404	2014-03-25 16:27:14		

#	Reading inch	Date/Time	Ignore	Notes
115	0.122	2014-03-25 16:27:16		
116	0.079	2014-03-25 16:27:19		
117	0.410	2014-03-25 16:27:21		
118	0.425	2014-03-25 16:27:27		
119	0.366	2014-03-25 16:27:29		
120	0.411	2014-03-25 16:27:31		
121	0.275	2014-03-25 16:27:33		
122	0.159	2014-03-25 16:27:37		
123	0.243	2014-03-25 16:27:43		
124	0.421	2014-03-25 16:27:45		
125	0.410	2014-03-25 16:27:53		
126	0.413	2014-03-25 16:27:56		
127	0.355	2014-03-25 16:28:08		
128	0.380	2014-03-25 16:28:10		
129	0.349	2014-03-25 16:28:53		
130	0.306	2014-03-25 16:29:01		
131	0.357	2014-03-25 16:29:04		
132	0.413	2014-03-25 16:29:19		
133	0.405	2014-03-25 16:29:27		
134	0.403	2014-03-25 16:29:37		
135	0.418	2014-03-25 16:29:47		
136	0.403	2014-03-25 16:29:56		
137	0.405	2014-03-25 16:29:58		
138	0.421	2014-03-25 16:30:00		
139	0.427	2014-03-25 16:30:11		
140	0.159	2014-03-25 16:30:15		
141	0.426	2014-03-25 16:30:18		
142	0.429	2014-03-25 16:30:32		
143	0.404	2014-03-25 16:30:46		
144	0.334	2014-03-25 16:30:51		
145	0.413	2014-03-25 16:30:56		
146	0.420	2014-03-25 16:31:06		
147	0.405	2014-03-25 16:31:11		
148	0.347	2014-03-25 16:31:14		
149	0.331	2014-03-25 16:31:49		
150	0.342	2014-03-25 16:31:55		
151	0.336	2014-03-25 16:31:58		
152	0.386	2014-03-25 16:32:23		
153	0.456	2014-03-25 16:32:25		

	Reading			
#	inch	Date/Time	Ignore	Notes
154	0.411	2014-03-25 16:32:29		
155	0.405	2014-03-25 16:32:39		
156	0.405	2014-03-25 16:32:41		
157	0.403	2014-03-25 16:32:44		
158	0.413	2014-03-25 16:32:48		
159	0.307	2014-03-25 16:32:58		
160	0.407	2014-03-25 16:33:00		
161	0.403	2014-03-25 16:33:05		
162	0.502	2014-03-25 16:33:10		
163	0.222	2014-03-25 16:33:15		
164	0.354	2014-03-25 16:33:21		
165	0.063	2014-03-25 16:33:45		
166	0.406	2014-03-25 16:33:47		
167	0.402	2014-03-25 16:33:50		
168	0.070	2014-03-25 16:33:53		
169	0.371	2014-03-25 16:34:02		
170	0.399	2014-03-25 16:34:11		
171	0.380	2014-03-25 16:34:15		
172	0.246	2014-03-25 16:34:29		
173	0.346	2014-03-25 16:34:32		
174	0.371	2014-03-25 16:34:37		
175	0.340	2014-03-25 16:34:40		
176	0.398	2014-03-25 16:34:42		
177	0.429	2014-03-25 16:34:57		
178	0.317	2014-03-25 16:35:09		
179	0.394	2014-03-25 16:35:15		
180	0.405	2014-03-25 16:35:17		
181	0.406	2014-03-25 16:35:28		
182	0.407	2014-03-25 16:35:30		
183	0.430	2014-03-25 16:35:32		
184	0.345	2014-03-25 16:35:41		
185	0.403	2014-03-25 16:35:44		
186	0.399	2014-03-25 16:35:46		
187	0.157	2014-03-25 16:35:49		
188	0.397	2014-03-25 16:35:56		
189	0.401	2014-03-25 16:35:58		
190	0.253	2014-03-25 16:36:01		
191	0.403	2014-03-25 16:36:05		
192	0.402	2014-03-25 16:36:07		

Reading		Date/Time	Ignore	Notes
#	inch			
193	0.200	2014-03-25 16:36:52		
194	0.331	2014-03-25 16:36:58		
195	0.376	2014-03-25 16:37:00		
196	0.388	2014-03-25 16:37:03		
197	0.374	2014-03-25 16:37:09		
198	0.390	2014-03-25 16:37:11		
199	0.385	2014-03-25 16:37:19		
200	0.411	2014-03-25 16:37:31		
201	0.404	2014-03-25 16:37:34		
202	0.425	2014-03-25 16:37:37		
203	0.413	2014-03-25 16:37:39		
204	0.398	2014-03-25 16:37:42		
205	0.409	2014-03-25 16:37:51		
206	0.408	2014-03-25 16:37:54		
207	0.433	2014-03-25 16:38:00		
208	0.405	2014-03-25 16:38:03		
209	0.321	2014-03-25 16:38:06		
210	0.413	2014-03-25 16:38:10		
211	1.047	2014-03-25 16:38:14		
212	0.413	2014-03-25 16:38:22		
213	0.358	2014-03-25 16:39:10		
214	0.357	2014-03-25 16:39:13		
215	0.372	2014-03-25 16:39:17		
216	0.376	2014-03-25 16:39:26		
217	0.400	2014-03-25 16:39:33		
218	0.389	2014-03-25 16:39:38		
219	0.403	2014-03-25 16:39:41		
220	0.325	2014-03-25 16:39:46		
221	0.315	2014-03-25 16:39:52		
222	0.396	2014-03-25 16:39:59		
223	0.417	2014-03-25 16:40:03		
224	0.410	2014-03-25 16:40:11		
225	0.439	2014-03-25 16:40:23		
226	0.399	2014-03-25 16:40:29		
227	0.248	2014-03-25 16:40:44		
228	0.401	2014-03-25 16:40:49		
229	0.421	2014-03-25 16:41:13		
230	0.422	2014-03-25 16:41:22		
231	0.434	2014-03-25 16:41:24		

#	Reading inch	Date/Time	Ignore	Notes
232	0.226	2014-03-25 16:41:27		
233	0.246	2014-03-25 16:41:29		
234	0.427	2014-03-25 16:41:32		
235	0.161	2014-03-25 16:41:51		
236	0.400	2014-03-25 16:41:53		
237	0.408	2014-03-25 16:42:00		
238	0.410	2014-03-25 16:42:06		
239	0.398	2014-03-25 16:42:25		
240	0.404	2014-03-25 16:42:30		
241	0.406	2014-03-25 16:42:43		
242	0.062	2014-03-25 16:42:55		
243	0.411	2014-03-25 16:43:03		
244	0.421	2014-03-25 16:43:05		
245	0.327	2014-03-25 16:43:14		
246	0.408	2014-03-25 16:43:17		
247	0.410	2014-03-25 16:43:28		
248	0.412	2014-03-25 16:43:35		
249	0.404	2014-03-25 16:43:37		
250	0.403	2014-03-25 16:43:39		
251	0.429	2014-03-25 16:43:41		
252	0.294	2014-03-25 16:43:43		
253	0.410	2014-03-25 16:43:50		
254	0.324	2014-03-25 16:43:54		
255	0.414	2014-03-25 16:43:59		
256	0.064	2014-03-25 16:44:03		
257	0.272	2014-03-25 16:44:14		
258	0.094	2014-03-25 16:44:18		
259	0.420	2014-03-25 16:44:22		
260	0.401	2014-03-25 16:44:24		
261	0.404	2014-03-25 16:44:30		
262	0.401	2014-03-25 16:44:34		
263	0.407	2014-03-25 16:44:42		
264	0.321	2014-03-25 16:44:47		
265	0.399	2014-03-25 16:44:55		
266	0.399	2014-03-25 16:45:04		
267	0.399	2014-03-25 16:45:09		
268	0.082	2014-03-25 16:45:11		
269	1.065	2014-03-25 16:45:16		
270	0.089	2014-03-25 16:45:18		



#	Reading inch	Date/Time	Ignore	Notes
271	0.363	2014-03-25 16:45:20		
272	0.319	2014-03-25 16:45:29		
273	0.234	2014-03-25 16:45:31		
274	0.260	2014-03-25 16:45:45		
275	0.318	2014-03-25 16:45:48		
276	0.067	2014-03-25 16:45:51		
277	0.410	2014-03-25 16:46:03		
278	0.389	2014-03-25 16:46:05		
279	0.417	2014-03-25 16:46:08		
280	0.406	2014-03-25 16:46:28		
281	0.402	2014-03-25 16:46:31		
282	0.070	2014-03-25 16:46:40		
283	0.357	2014-03-25 16:46:50		
284	0.389	2014-03-25 16:46:53		
285	0.312	2014-03-25 16:47:02		
286	0.402	2014-03-25 16:47:04		
287	0.431	2014-03-25 16:47:12		
288	0.400	2014-03-25 16:47:18		
289	0.317	2014-03-25 16:47:23		
290	0.148	2014-03-25 16:47:29		
291	0.383	2014-03-25 16:47:34		
292	0.409	2014-03-25 16:47:38		
293	0.320	2014-03-25 16:47:46		
294	0.324	2014-03-25 16:47:49		
295	0.164	2014-03-25 16:47:56		
296	0.391	2014-03-25 16:48:03		
297	0.407	2014-03-25 16:48:27		
298	0.394	2014-03-25 16:48:32		
299	0.413	2014-03-25 16:48:37		
300	0.398	2014-03-25 16:48:46		
301	0.419	2014-03-25 16:48:51		
302	0.328	2014-03-25 16:48:55		
303	0.413	2014-03-25 16:48:58		
304	0.408	2014-03-25 16:49:08		
305	0.156	2014-03-25 16:49:15		
306	0.159	2014-03-25 16:49:17		
307	0.187	2014-03-25 16:49:20		
308	0.430	2014-03-25 16:49:30		
309	0.406	2014-03-25 16:49:38		

#	Reading inch	Date/Time	Ignore	Notes
310	0.428	2014-03-25 16:49:43		
311	0.411	2014-03-25 16:49:49		
312	0.150	2014-03-25 16:49:52		
313	0.402	2014-03-25 16:49:54		
314	0.502	2014-03-25 16:49:59		
315	0.235	2014-03-25 16:50:03		
316	0.478	2014-03-25 16:50:07		
317	0.415	2014-03-25 16:50:15		
318	0.320	2014-03-25 16:50:21		
319	0.406	2014-03-25 16:50:28		
320	0.345	2014-03-25 16:50:31		
321	0.834	2014-03-25 16:50:34		
322	0.406	2014-03-25 16:50:36		
323	0.231	2014-03-25 16:50:40		
324	0.387	2014-03-25 16:50:42		
325	0.405	2014-03-25 16:50:46		
326	0.408	2014-03-25 16:50:49		
327	0.385	2014-03-25 16:51:35		
328	0.386	2014-03-25 16:51:39		
329	0.427	2014-03-25 16:51:54		
330	0.442	2014-03-25 16:51:56		
331	0.421	2014-03-25 16:51:58		
332	0.382	2014-03-25 16:52:05		
333	0.384	2014-03-25 16:52:07		
334	0.293	2014-03-25 16:52:13		
335	0.417	2014-03-25 16:52:15		
336	0.392	2014-03-25 16:52:18		
337	0.238	2014-03-25 16:52:23		
338	0.383	2014-03-25 16:52:26		
339	0.404	2014-03-25 16:52:56		
340	0.395	2014-03-25 16:53:00		
341	0.406	2014-03-25 16:53:06		
342	0.399	2014-03-25 16:53:12		
343	0.370	2014-03-25 16:53:18		
344	0.413	2014-03-25 16:53:23		
345	0.358	2014-03-25 16:53:26		
346	0.509	2014-03-25 16:53:29		
347	0.398	2014-03-25 16:53:34		
348	0.327	2014-03-25 16:53:39		

Reading		Date/Time	Ignore	Notes
#	inch			
349	0.192	2014-03-25 16:53:42		
350	0.399	2014-03-25 16:53:51		
351	0.405	2014-03-25 16:53:53		
352	0.399	2014-03-25 16:54:01		
353	0.401	2014-03-25 16:54:04		
354	0.431	2014-03-25 16:54:07		
355	0.421	2014-03-25 16:54:12		
356	0.398	2014-03-25 16:54:15		
357	0.403	2014-03-25 16:54:17		
358	0.110	2014-03-25 16:54:20		
359	0.399	2014-03-25 16:54:23		
360	0.239	2014-03-25 16:54:39		
361	0.395	2014-03-25 16:54:45		
362	0.397	2014-03-25 16:54:47		
363	0.406	2014-03-25 16:54:55		
364	0.317	2014-03-25 16:54:59		
365	0.393	2014-03-25 16:55:01		
366	0.408	2014-03-25 16:55:04		
367	0.399	2014-03-25 16:55:07		
368	0.397	2014-03-25 16:55:13		
369	0.396	2014-03-25 16:55:17		
370	0.394	2014-03-25 16:55:19		
371	0.397	2014-03-25 16:55:25		
372	0.423	2014-03-25 16:55:32		
373	0.403	2014-03-25 16:55:39		
374	0.325	2014-03-25 16:55:52		
375	0.485	2014-03-25 16:55:59		
376	0.410	2014-03-25 16:56:01		
377	0.400	2014-03-25 16:56:05		
378	0.396	2014-03-25 16:56:07		
379	0.346	2014-03-25 16:56:11		
380	0.409	2014-03-25 16:56:23		
381	0.413	2014-03-25 16:56:25		
382	0.405	2014-03-25 16:56:30		
383	0.401	2014-03-25 16:56:34		
384	0.412	2014-03-25 16:56:36		
385	0.407	2014-03-25 16:56:50		
386	0.409	2014-03-25 16:56:54		
387	0.318	2014-03-25 16:56:57		

Reading		Date/Time	Ignore	Notes
#	inch			
388	0.411	2014-03-25 16:57:01		
389	0.393	2014-03-25 16:57:14		
390	0.069	2014-03-25 16:57:16		
391	0.398	2014-03-25 16:57:18		
392	0.404	2014-03-25 16:57:20		
393	0.258	2014-03-25 16:57:29		
394	0.403	2014-03-25 16:57:31		
395	1.173	2014-03-25 16:57:38		
396	0.335	2014-03-25 16:57:40		
397	0.391	2014-03-25 16:57:46		
398	0.062	2014-03-25 16:57:49		
399	0.200	2014-03-25 16:57:52		
400	0.399	2014-03-25 16:57:58		
401	0.327	2014-03-25 16:58:01		
402	0.393	2014-03-25 16:58:08		
403	0.403	2014-03-25 16:58:17		
404	0.318	2014-03-25 16:58:22		
405	0.395	2014-03-25 16:58:24		
406	0.209	2014-03-25 16:58:27		
407	0.329	2014-03-25 16:58:35		
408	0.413	2014-03-25 16:58:41		
409	0.406	2014-03-25 16:58:46		
410	0.428	2014-03-25 16:59:00		
411	0.406	2014-03-25 16:59:04		
412	0.419	2014-03-25 16:59:13		
413	0.407	2014-03-25 16:59:21		
414	0.425	2014-03-25 16:59:36		
415	0.425	2014-03-25 16:59:38		
416	0.415	2014-03-25 16:59:46		
417	0.109	2014-03-25 16:59:49		
418	0.412	2014-03-25 16:59:57		
419	0.401	2014-03-25 16:59:59		
420	0.402	2014-03-25 17:00:08		
421	0.394	2014-03-25 17:00:10		
422	0.409	2014-03-25 17:00:15		
423	0.436	2014-03-25 17:00:18		
424	0.439	2014-03-25 17:00:24		
425	0.426	2014-03-25 17:00:32		
426	0.415	2014-03-25 17:00:34		

Reading		Date/Time	Ignore	Notes
#	inch			
427	0.404	2014-03-25 17:00:37		
428	0.413	2014-03-25 17:00:54		
429	0.425	2014-03-25 17:01:01		
430	0.404	2014-03-25 17:01:06		
431	0.424	2014-03-25 17:01:10		
432	0.217	2014-03-25 17:01:12		
433	0.409	2014-03-25 17:01:17		
434	0.402	2014-03-25 17:01:19		
435	0.404	2014-03-25 17:01:24		
436	0.408	2014-03-25 17:01:29		
437	0.403	2014-03-25 17:01:32		
438	0.288	2014-03-25 17:02:22		









