

Tamar E. Finn
Brett P. Ferenczak
Patricia Cave
tamar.finn@morganlewis.com
brett.ferenczak@morganlewis.com
patricia.cave@morganlewis.com

March 12, 2020

VIA ELECTRONIC FILING

Braulio L. Baez, Executive Director
Florida Public Service Commission
Office of the Commission Clerk
2540 Schumard Oak Boulevard
Tallahassee, FL 32399-0850

Re: Notification Regarding a *Pro Forma* Consolidation Affecting Fibernet Direct Florida LLC and Crown Castle Fiber LLC

Surrender of the Certificate Fibernet Direct Florida LLC

Dear Executive Director Baez:

On behalf of Crown Castle Fiber LLC ("Crown Castle Fiber"), as the successor-in-interest to Fibernet Direct Florida LLC ("Fibernet-FL", together with Crown Castle Fiber, the "Parties"), this letter notifies the Commission that a *Pro Forma* Consolidation (as defined below) completed on December 31, 2018, resulted in (1) the *pro forma* consolidation of Fibernet-FL into Crown Castle Fiber and (2) *pro forma* changes in the ownership chain of Crown Castle Fiber.

In connection with the *Pro Forma* Consolidation, Crown Castle Fiber surrenders Fibernet-FL's Certificate effective immediately or as soon as the Commission can take such action. To the extent that Fibernet-FL has any tariffs on file with the Commission, Crown Castle Fiber also requests that such tariffs be cancelled and withdrawn.

Contacts

Inquiries or copies of any correspondence, orders, or other materials pertaining to this filing should be directed to:

Morgan, Lewis & Bockius LLP

1111 Pennsylvania Avenue, NW
Washington, DC 20004
United States

T +1.202.739.3000
F +1.202.739.3001

with copies to:

Tamar E. Finn
Brett P. Ferenchak
Patricia Cave
Morgan, Lewis & Bockius LLP
1111 Pennsylvania Avenue, N.W.
Washington, DC 20004-2541
Tel: 202-739-3000
Fax: 202-739-3001
tamar.finn@morganlewis.com
brett.ferenchak@morganlewis.com
patricia.cave@morganlewis.com

Fernanda Biehl
Manager, Regulatory Affairs – Fiber
Crown Castle Fiber
2000 Corporate Drive
Canonsburg, PA 15317
Tel: 703-434-8533
Fax: 703-434-8510
PUC.Correspondence@crowncastle.com

Description of the *Pro Forma* Consolidation

The *Pro Forma* Consolidation involved a series of planned intra-company transactions whereby certain of Crown Castle Fiber's operating company affiliates (including Fibernet-FL) and/or operations and assets of its affiliates were consolidated into Crown Castle Fiber and certain of Crown Castle Fiber's parent companies also were consolidated. The *Pro Forma* Consolidation was undertaken, in part, to streamline the corporate structure and operations of over 20 operating entities of Crown Castle International Corp. ("CCIC") that provide fiber-based services into a single unified and rebranded operating entity:¹ Crown Castle Fiber LLC.

The *Pro Forma* Consolidation also resulted in a change in the intermediate corporate holding company structure between CCIC and Crown Castle Fiber. As a result of the *Pro Forma* Consolidation, Crown Castle Fiber is a direct, wholly owned subsidiary of Crown Castle Fiber Holdings Corp., a Delaware corporation, which was previously a Delaware limited liability company named LTS Group Holdings, LLC² and a direct, wholly owned subsidiary of Crown Castle Operating Company ("CCOC"). CCOC is a Delaware corporation and a direct, wholly owned subsidiary of CCIC. Charts depicting the pre-*Pro Forma* Consolidation and current ownership structure are attached as **Exhibit A**.

As a result of the *Pro Forma* Consolidation, Fibernet-FL no longer exists as a separate corporate entity. As of January 1, 2019, Crown Castle Fiber provides telecommunications services to Fibernet-FL's customers pursuant to Crown Castle Fiber's Certificate of Authority

¹ Certain other operating entities that do not operate in Florida were retained for other reasons.

² As part of the *Pro Forma* Consolidation, LTS Group Holdings, LLC converted from a Delaware limited liability company into a Delaware corporation and was renamed Crown Castle Fiber Holdings Corp. As a result of the *Pro Forma* Consolidation, Crown Castle Fiber Holdings Corp. is a direct, wholly owned subsidiary of CCOC.

Braulio L. Baez, Executive Director
March 12, 2020
Page 3

No. 8917³ under the same rates, terms and conditions as the services previously provided pursuant to individually negotiated contracts with Fibernet-FL. The *Pro Forma* Consolidation, therefore, was seamless to customers.

Surrender of the Certificate of Fibernet-FL

Because Fibernet-FL no longer provides telecommunications in Florida and Fibernet-FL no longer exists as a separate corporate entity, Crown Castle Fiber respectfully surrenders the following Certificate of Fibernet-FL effective immediately and requests that the Commission cancel the Certificate at the earliest possible date:

Fibernet-FL holds CLEC Certificate No. 7923.⁴

To the extent that Fibernet-FL has any tariffs on file with Commission, Crown Castle Fiber also requests that such tariffs be cancelled and withdrawn.

Any questions or inquiries regarding any outstanding regulatory obligations of Fibernet-FL should be directed to:

Fernanda Biehl
Manager, Regulatory Affairs – Fiber
Crown Castle Fiber
2000 Corporate Drive
Canonsburg, PA 15317
Tel: 703-434-8533
Fax: 703-434-8510
PUC.Correspondence@crowncastle.com

* * * *

³ See Order Nos. PSC-2018-0143-PAA-TX & PSC-2018-0181-CO-TX. This Certificate was originally issued in the name of Lighttower Fiber Networks II, LLC, which subsequently changed its name to Crown Castle Fiber. See Docket No. 20180126-TX.

⁴ This Certificate was originally issued in the name of FPL FiberNet, LLC, which subsequently changed its name to Fibernet Direct Florida LLC. See Docket No. 170023-TX.

Braulio L. Baez, Executive Director
March 12, 2020
Page 4

Please acknowledge receipt and acceptance of this filing. Should you have any questions regarding this filing, please do not hesitate to contact us.

Respectfully submitted,

/s/Brett P. Ferenchak

Tamar E. Finn
Brett P. Ferenchak
Patricia Cave

Counsel for Crown Castle Fiber LLC

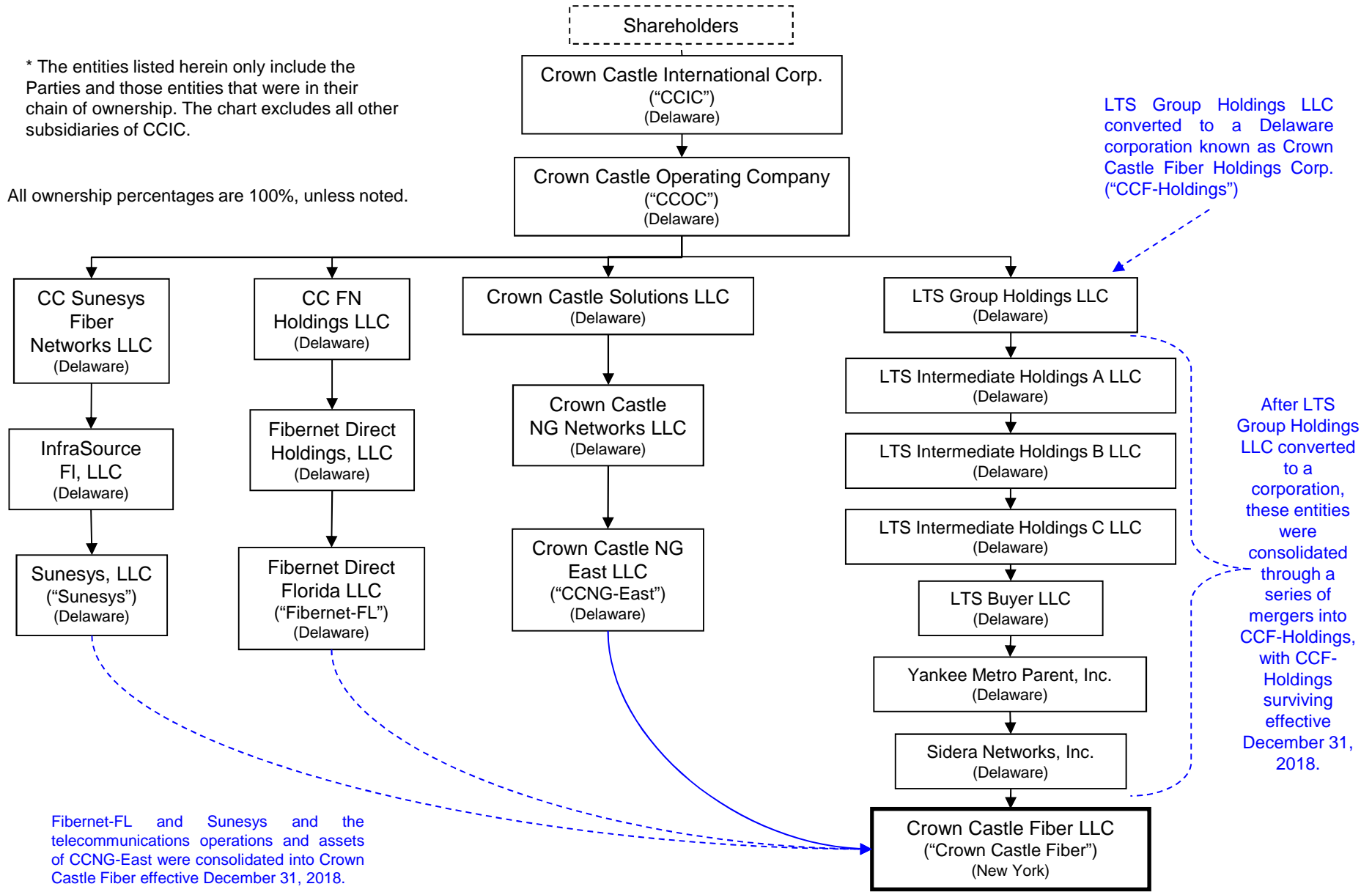
EXHIBIT A

Pre-*Pro Forma* Consolidation and Current Corporate Ownership Structure Charts

Pre-Pro Forma Consolidation Corporate Ownership Structure of the Parties*

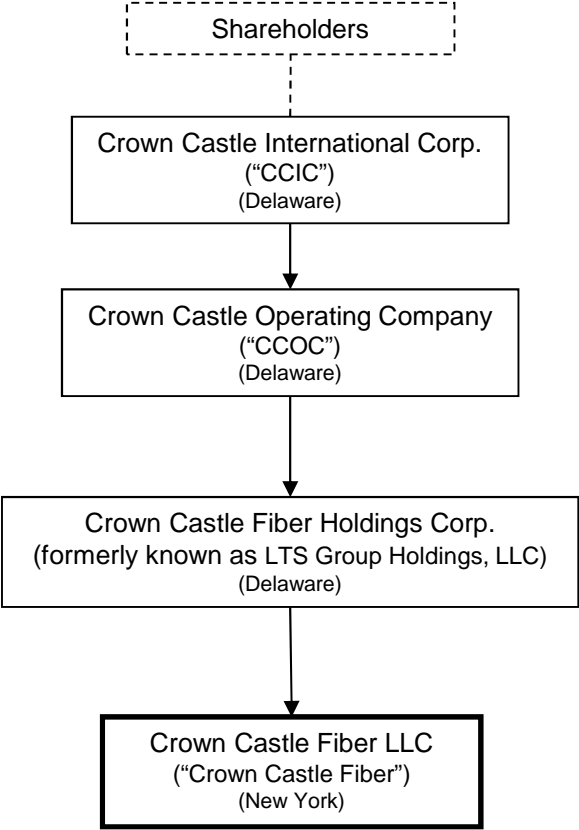
* The entities listed herein only include the Parties and those entities that were in their chain of ownership. The chart excludes all other subsidiaries of CCIC.

All ownership percentages are 100%, unless noted.



Current Corporate Ownership Structure of Crown Castle Fiber

* The entities listed herein only include Crown Castle Fiber and those entities that are in its chain of ownership. The chart excludes all other subsidiaries of CCIC.



All ownership percentages are 100%.