



March 3, 2023

BY UPS

Adam Teitzman
Commission Clerk
Florida Public Service Commission
2540 Shumard Oak Boulevard
Tallahassee, FL 32399-0850

Dear Mr. Teitzman:

Enclosed are four final and two legislative copies of proposed tariff sheets for Sumter Electric Cooperative, Inc. (SECO), along with an Executive Report of the 2022 Cost of Service Study. The following rate sheets were modified:

- Schedule GS – Seventeenth Revised Sheet 7.0
- Schedule GSD – Sixteenth Revised Sheet 8.0
- Schedule RS – Fifteenth Revised Sheet 9.0
- Schedule PMRS – Fourth Revised Sheet No. 18.0
- Rider EV – Original Sheet 9.4

To strengthen the financial condition of the cooperative and to prepare for future variations in the weather and consumption patterns, we are proposing these revisions to our rate schedules. Changes vary by rate class, but the projected total system increase is 4.21%. The proposed implementation date is May 1, 2023.

Sincerely yours,

Anh Reynolds
Interim Chief Financial Officer

COM _____
 AFD _____
 APA _____
 ECO 3 finals & 1 legislative copy
 ENG _____
 GCL _____
 IDM _____
 CLK _____

RECEIVED-FPSC
 2023 MAR -6 AM 11:44
 COMMISSION CLERK

cc: Curtis Wynn, CEO



INDEX OF RATE SCHEDULES

<u>DESIGNATION</u>	<u>DESCRIPTION</u>	<u>SHEET NUMBER</u>
<i>GS</i>	<i>General Service</i>	<i>7.0 – 7.1</i>
<i>GSD</i>	<i>General Service/Demand</i>	<i>8.0 – 8.2</i>
<i>GSDI</i>	<i>General Service/Demand Interruptible</i>	<i>8.6 – 8.8</i>
<i>LGSD</i>	<i>Large General Service/Demand</i>	<i>8.9 – 8.11</i>
<i>RS</i>	<i>Residential Service</i>	<i>9.0</i>
<i>RS-TOU</i>	<i>Residential Service Time-Of-Use</i>	<i>9.1 – 9.2</i>
<i>EV</i>	<i>Public Charging for Electric Vehicles</i>	<i>9.3</i>
	<i>Electric Vehicle Smart Charging Rider</i>	<i>9.4</i>
<i>LS</i>	<i>Lighting Service</i>	<i>10.3 – 10.5</i>
<i>CSA</i>	<i>Contract Service Agreement</i>	<i>11.0 – 11.3</i>
<i>PCA</i>	<i>Wholesale Power Cost Adjustment</i>	<i>12.0</i>
	<i>Miscellaneous Charge Amounts</i>	<i>16.0 – 16.02</i>
	<i>Line Extension Charges</i>	<i>16.1 – 16.3</i>
	<i>Net Metering</i>	<i>16.4</i>
	<i>Interconnection Agreement for Customer Owned Renewable Generation Systems</i>	<i>17.0 – 17.5</i>
	<i>Prepaid Metering Rate Schedule</i>	<i>18.0 – 18.1</i>
<i>DS</i>	<i>Idle and Dormant Services</i>	<i>19.0 – 19.1</i>



GENERAL SERVICE - SCHEDULE GS

AVAILABILITY

Available throughout the territory served by the Cooperative in accordance with the Cooperative's Rules and Regulations for Electric Service.

APPLICABILITY

Applicable to any non-residential service for light and power purposes where monthly usage is less than 50 KW Demand and 10,000 KWH, and where the consumer's load does not meet the applicability criteria of Rate Schedule GSD.

CHARACTER AND CONDITIONS OF SERVICE

Single phase or three phase, 60 Hertz, at the Cooperative's standard available voltage. Resale of service or standby service is not permitted hereunder.

CHARGES

Customer Charge

Single Phase	\$1.20 per day
Three Phase	\$1.55 per day
Energy Charge.....	11.65 cents per kWh

MINIMUM MONTHLY CHARGE

The minimum monthly charge for service shall be the daily Customer Charge times the number of days in the billing cycle.

WHOLESALE POWER COST ADJUSTMENT

The monthly charge for energy, stated above, is subject to adjustment according to the Wholesale Power Cost Adjustment Schedule.

TERMS OF PAYMENT

Bills are due and payable by the date shown on the bill. Bills not paid by the date shown on the bill are subject to a late payment fee of 1.5% of the amount of the bill, with a minimum fee of \$5.00.



GENERAL SERVICE DEMAND - RATE SCHEDULE GSD

AVAILABILITY

Available throughout the territory served by the Cooperative in accordance with the Cooperative's Rules and Regulations for Electric Service.

APPLICABILITY

Applicable to non-residential service for light and power purposes where monthly usage equals or exceeds 50 KW Demand and/or 10,000 KWH for two consecutive billing months. The minimum term of service under this rate schedule shall be the twelve months following the establishment of either or both of the above specified usages.

CHARACTER AND CONDITIONS OF SERVICE

Single phase or three phase, 60 Hertz, at the Cooperative's standard available voltage. Resale of service or standby service is not permitted hereunder.

CHARGES

Customer Charge.....	\$3.00 per day
Demand Charge.....	\$6.50 per kW
Energy Charge.....	9.35 cents per kWh

BILLING DEMAND

The monthly billing demand shall be the maximum 15-minute demand registered during the period for which the bill is rendered.

MINIMUM MONTHLY CHARGE

The minimum monthly charge for service shall be the highest of:

1. The stated minimum charge per contract or,
2. The daily Customer Charge times the number of days in the billing cycle plus a facilities use charge, if applicable.

Continued on Sheet No. 8.1



RESIDENTIAL SERVICE – SCHEDULE RS

AVAILABILITY

Available throughout the territory served by the Cooperative in accordance with the Cooperative's Rules and Regulations for Electric Service.

APPLICABILITY

Applicable to electric service used for domestic purposes in single or multiple family residences.

CHARACTER AND CONDITIONS OF SERVICE

Single phase, 60 Hertz, at the Cooperative's standard available voltage. Resale of service or standby service is not permitted hereunder.

LIMITATION OF SERVICE

Service to the electrical equipment for those participating in the Load Management Program may be interrupted at the option of the Company by means of load management devices installed on the customer's premises.

CHARGES

Customer Charge.....	\$1.15 per day
Energy Charge	
First 1,000 kWh.....	11.21 cents per kWh
Over 1,000 kWh.....	13.21 cents per kWh

MONTHLY MINIMUM CHARGE

The minimum monthly charge shall be the daily Customer Charge times the number of days in the billing cycle.

WHOLESALE POWER COST ADJUSTMENT

The monthly charges for energy stated above are subject to adjustment according to the Wholesale Power Cost Adjustment Schedule.

TERMS OF PAYMENT

Bills are due and payable by the date shown on the bill. Bills not paid by the date shown on the bill are subject to a late payment fee of 1.5% of the amount of the bill, with a minimum fee of \$5.00.



SUMTER ELECTRIC COOPERATIVE, INC.
PREPAID METERING RATE SCHEDULE (PMRS)

AVAILABILITY:

Available throughout the territory served by Sumter Electric Cooperative, Inc.

APPLICABILITY:

As an optional rate for establishments classed as residential. Customers, who voluntarily elect to be served under this tariff, must remain on this tariff for a minimum of 12 months.

LIMITATION:

Subject to all of the rules and regulations of this tariff, general rules and regulations of the utility. Standby or resale service not permitted.

Service under this Schedule is not permitted to customers who designate a third party to receive notification of any pending termination notices. The Cooperative shall install, maintain and own all Prepaid Metering equipment.

CHARGES:

Customer Charge	\$ 1.30 per day
Energy Charge:	
First 1,000 kWh	11.21 cents per kWh
Over 1,000 kWh	13.21 cents per kWh

MINIMUM CHARGE:

The minimum daily charge shall be the Customer Charge.

TERMS OF PAYMENT:

Payment for service shall be made in advance ("Advance Purchases"). At such time as the value of the service consumed equals the value of Advanced Purchases, electric service is subject to immediate disconnection from the Cooperative by the Prepaid Metering system until additional purchases by the customer are made. Should the electric service be disconnected by the prepaid metering system due to customer's electrical usage having consumed the entire value of the advanced purchases, the customer charge will continue to accumulate on customer's account and will be deducted from the customer's next additional purchase. Disconnection for reasons of non-payment does not release customer from their obligation to pay the daily Customer Charge. Under the Prepaid Metering Schedule, if the outstanding account remains disconnected for 7 business days, the Cooperative will consider the account closed.

(Continued on Sheet No. 18.1)



Electric Vehicle Smart Charging Rider

AVAILABILITY

Available throughout the territory served by the Cooperative in accordance with the Cooperative's Rules and Regulations for Electric Service.

APPLICABILITY

Applicable as an optional rider to customers served under Residential Service – Schedule RS for electric vehicle charging during Super Off-Peak hours as defined in this rider. Electric vehicles must be all-electric, registered with a state Department of Motor Vehicle, and either owned or leased by the customer.

MONTHLY CREDIT

Customer shall receive a fixed monthly credit in the amount of \$7.00 per month.

TERMS AND CONDITIONS SPECIFIC TO THE EV RIDER

1. Customer shall only charge electric vehicle during Super Off-Peak hours. Super Off-Peak Hours are defined as the hours from 12am to 6am daily.
2. In order to receive the monthly credit, customer must provide evidence (either digitally provided screen shot or picture) that shows the EV app or EV dashboard has been correctly programmed for Super Off-Peak hours.
3. Cooperative will monitor, on an ongoing basis, the load profile of customer to ensure EV charging is occurring predominantly during Super Off-Peak hours. Should it be determined that a customer is not charging predominately during Super Off-Peak hours, Cooperative, at its sole discretion, may remove a customer from this optional rider and customer shall not receive the Monthly Credit.
4. Customers must charge the electric vehicle at home utilizing a Level 1 or Level 2 charger.



INDEX OF RATE SCHEDULES

<u>DESIGNATION</u>	<u>DESCRIPTION</u>	<u>SHEET NUMBER</u>
<i>GS</i>	<i>General Service</i>	<i>7.0 – 7.1</i>
<i>GSD</i>	<i>General Service/Demand</i>	<i>8.0 – 8.2</i>
<i>GSDI</i>	<i>General Service/Demand Interruptible</i>	<i>8.6 – 8.8</i>
<i>LGSD</i>	<i>Large General Service/Demand</i>	<i>8.9 – 8.11</i>
<i>RS</i>	<i>Residential Service</i>	<i>9.0</i>
<i>RS-TOU</i>	<i>Residential Service Time-Of-Use</i>	<i>9.1 – 9.2</i>
<i>EV</i>	<i>Public Charging for Electric Vehicles</i>	<i>9.3</i>
	<i>Electric Vehicle Smart Charging Rider</i>	<i>9.4</i>
<i>LS</i>	<i>Lighting Service</i>	<i>10.3 – 10.5</i>
<i>CSA</i>	<i>Contract Service Agreement</i>	<i>11.0 – 11.3</i>
<i>PCA</i>	<i>Wholesale Power Cost Adjustment</i>	<i>12.0</i>
	<i>Miscellaneous Charge Amounts</i>	<i>16.0 – 16.02</i>
	<i>Line Extension Charges</i>	<i>16.1 – 16.3</i>
	<i>Net Metering</i>	<i>16.4</i>
	<i>Interconnection Agreement for Customer Owned Renewable Generation Systems</i>	<i>17.0 – 17.5</i>
	<i>Prepaid Metering Rate Schedule</i>	<i>18.0 – 18.1</i>
<i>DS</i>	<i>Idle and Dormant Services</i>	<i>19.0 – 19.1</i>



GENERAL SERVICE - SCHEDULE GS

AVAILABILITY

Available throughout the territory served by the Cooperative in accordance with the Cooperative's Rules and Regulations for Electric Service.

APPLICABILITY

Applicable to any non-residential service for light and power purposes where monthly usage is less than 50 KW Demand and 10,000 KWH, and where the consumer's load does not meet the applicability criteria of Rate Schedule GSD.

CHARACTER AND CONDITIONS OF SERVICE

Single phase or three phase, 60 Hertz, at the Cooperative's standard available voltage. Resale of service or standby service is not permitted hereunder.

CHARGES

Customer Charge	
Single Phase	\$1.2007 per day
Three Phase	\$1.5540 per day
Energy Charge.....	11.6552 cents per kWh

MINIMUM MONTHLY CHARGE

The minimum monthly charge for service shall be the daily Customer Charge times the number of days in the billing cycle.

WHOLESALE POWER COST ADJUSTMENT

The monthly charge for energy, stated above, is subject to adjustment according to the Wholesale Power Cost Adjustment Schedule.

TERMS OF PAYMENT

Bills are due and payable by the date shown on the bill. Bills not paid by the date shown on the bill are subject to a late payment fee of 1.5% of the amount of the bill, with a minimum fee of \$5.00.



GENERAL SERVICE DEMAND - RATE SCHEDULE GSD

AVAILABILITY

Available throughout the territory served by the Cooperative in accordance with the Cooperative's Rules and Regulations for Electric Service.

APPLICABILITY

Applicable to non-residential service for light and power purposes where monthly usage equals or exceeds 50 KW Demand and/or 10,000 KWH for two consecutive billing months. The minimum term of service under this rate schedule shall be the twelve months following the establishment of either or both of the above specified usages.

CHARACTER AND CONDITIONS OF SERVICE

Single phase or three phase, 60 Hertz, at the Cooperative's standard available voltage. Resale of service or standby service is not permitted hereunder.

CHARGES

- Customer Charge.....~~\$3.00~~**2.67** per day
- Demand Charge.....~~\$6.50~~**5.95** per kW
- Energy Charge..... ~~9.03~~**5** cents per kWh

BILLING DEMAND

The monthly billing demand shall be the maximum 15-minute demand registered during the period for which the bill is rendered.

MINIMUM MONTHLY CHARGE

- The minimum monthly charge for service shall be the highest of:
1. The stated minimum charge per contract or,
 2. The daily Customer Charge times the number of days in the billing cycle plus a facilities use charge, if applicable.

Continued on Sheet No. 8.1



RESIDENTIAL SERVICE – SCHEDULE RS

AVAILABILITY

Available throughout the territory served by the Cooperative in accordance with the Cooperative's Rules and Regulations for Electric Service.

APPLICABILITY

Applicable to electric service used for domestic purposes in single or multiple family residences.

CHARACTER AND CONDITIONS OF SERVICE

Single phase, 60 Hertz, at the Cooperative's standard available voltage. Resale of service or standby service is not permitted hereunder.

LIMITATION OF SERVICE

Service to the electrical equipment for those participating in the Load Management Program may be interrupted at the option of the Company by means of load management devices installed on the customer's premises.

CHARGES

Customer Charge.....	\$1.1500 per day
Energy Charge	
First 1,000 kWh.....	11.2106 cents per kWh
Over 1,000 kWh.....	13.2106 cents per kWh

MONTHLY MINIMUM CHARGE

The minimum monthly charge shall be the daily Customer Charge times the number of days in the billing cycle.

WHOLESALE POWER COST ADJUSTMENT

The monthly charges for energy stated above are subject to adjustment according to the Wholesale Power Cost Adjustment Schedule.

TERMS OF PAYMENT

Bills are due and payable by the date shown on the bill. Bills not paid by the date shown on the bill are subject to a late payment fee of 1.5% of the amount of the bill, with a minimum fee of \$5.00.



SUMTER ELECTRIC COOPERATIVE, INC.
PREPAID METERING RATE SCHEDULE (PMRS)

AVAILABILITY:

Available throughout the territory served by Sumter Electric Cooperative, Inc.

APPLICABILITY:

As an optional rate for establishments classed as residential. Customers, who voluntarily elect to be served under this tariff, must remain on this tariff for a minimum of 12 months.

LIMITATION:

Subject to all of the rules and regulations of this tariff, general rules and regulations of the utility. Standby or resale service not permitted.

Service under this Schedule is not permitted to customers who designate a third party to receive notification of any pending termination notices. The Cooperative shall install, maintain and own all Prepaid Metering equipment.

CHARGES:

Customer Charge	\$ 1.3014 per day
Energy Charge:	
First 1,000 kWh	11.2106 cents per kWh
Over 1,000 kWh	13.2106 cents per kWh

MINIMUM CHARGE:

The minimum daily charge shall be the Customer Charge.

TERMS OF PAYMENT:

Payment for service shall be made in advance ("Advance Purchases"). At such time as the value of the service consumed equals the value of Advanced Purchases, electric service is subject to immediate disconnection from the Cooperative by the Prepaid Metering system until additional purchases by the customer are made. Should the electric service be disconnected by the prepaid metering system due to customer's electrical usage having consumed the entire value of the advanced purchases, the customer charge will continue to accumulate on customer's account and will be deducted from the customer's next additional purchase. Disconnection for reasons of non-payment does not release customer from their obligation to pay the daily Customer Charge. Under the Prepaid Metering Schedule, if the outstanding account remains disconnected for 7 business days, the Cooperative will consider the account closed.

(Continued on Sheet No. 18.1)

Sumter Electric Cooperative
Sumterville Florida

Cost of Service

And

Retail Rate Study

Board Report – Executive Summary

Prepared by:



Energy Economics Consulting Corporation
PO Box 600
Forsyth, GA 31029

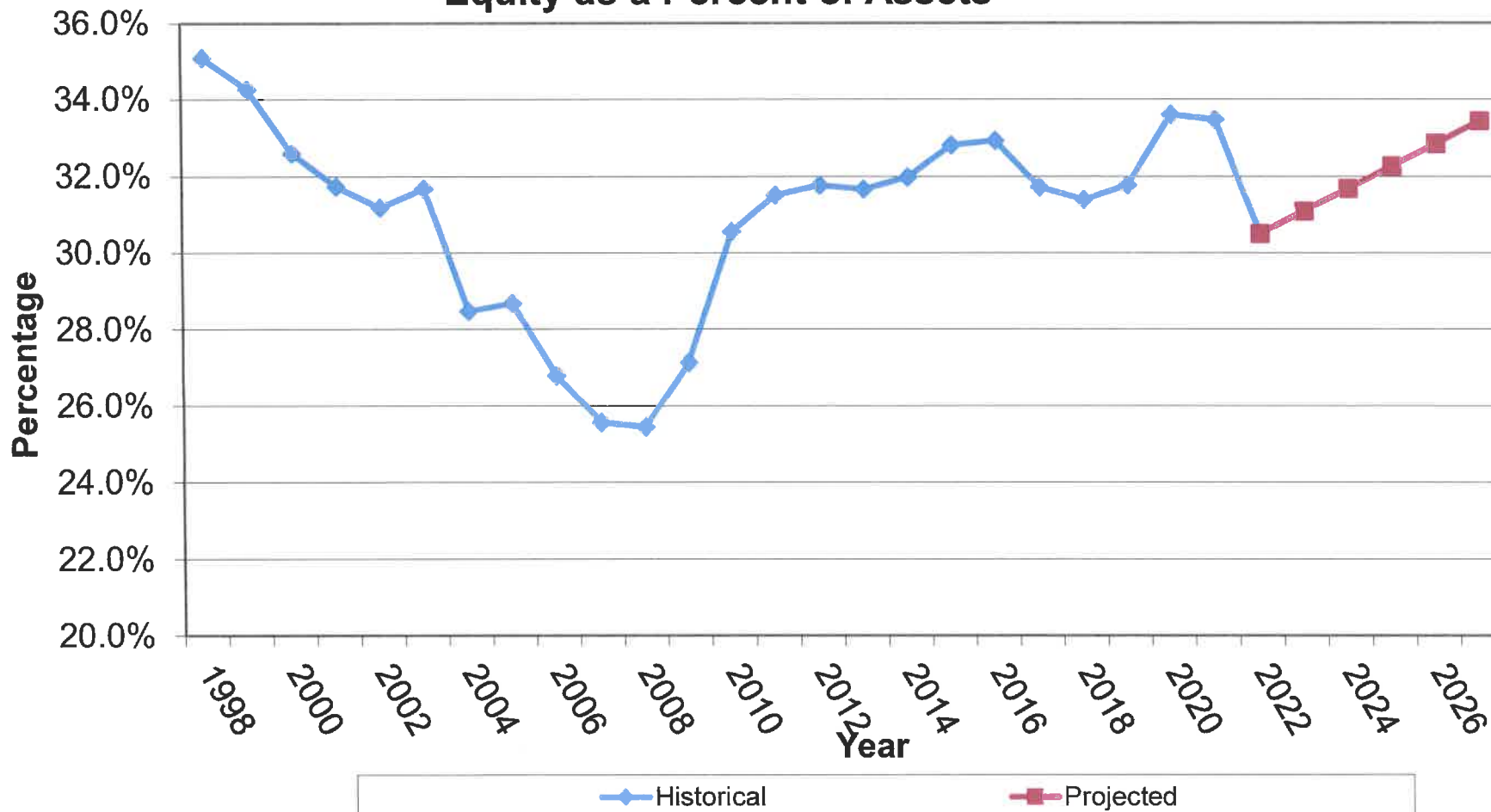
February 27, 2023

**SUMTER ELECTRIC COOPERATIVE
ADJUSTED INCOME STATEMENT**

<u>Line No.</u>	<u>Item</u> (a)	<u>2023 Projected</u> (b)	<u>Proposed Increase</u> (c)	<u>2023 Pro Forma</u> (d)
	<u>Operating Revenue</u>			
1	Rate Revenue	\$466,190,902	\$20,082,477	\$486,273,379
2	Other Revenue	<u>\$10,670,675</u>	<u>\$0</u>	<u>\$10,670,675</u>
3	TOTAL REVENUE	\$476,861,578	\$20,082,477	\$496,944,054
	<u>Operating Expenses</u>			
4	Purchased Power Expense	\$311,621,198	\$0	\$311,621,198
5	Distribution - O&M	\$113,812,571	\$0	\$113,812,571
6	Depreciation	\$32,496,543	\$0	\$32,496,543
7	Taxes	\$126,685	\$0	\$126,685
8	Interest	\$18,711,465	\$0	\$18,711,465
9	Other Deductions	<u>\$342,335</u>	<u>\$0</u>	<u>\$342,335</u>
10	TOTAL EXPENSES	\$477,110,797	\$0	\$477,110,797
11	OPERATING MARGINS	(\$249,219)	\$20,082,477	\$19,833,258
12	Non-Operating Margins	\$5,063,910	\$0	\$5,063,910
13	Capital Credits & Other	<u>\$6,835,429</u>	<u>\$0</u>	<u>\$6,835,429</u>
14	TOTAL MARGINS	\$11,650,120	\$20,082,477	\$31,732,597
15	TIER (Operating Margins)	0.99		2.08
16	TIER (Total Margins)	1.63		2.72

SUMTER EC

Equity as a Percent of Assets



Sumter EC

Functionalized Allocated Income Statement (Present Rate)
By Rate Class

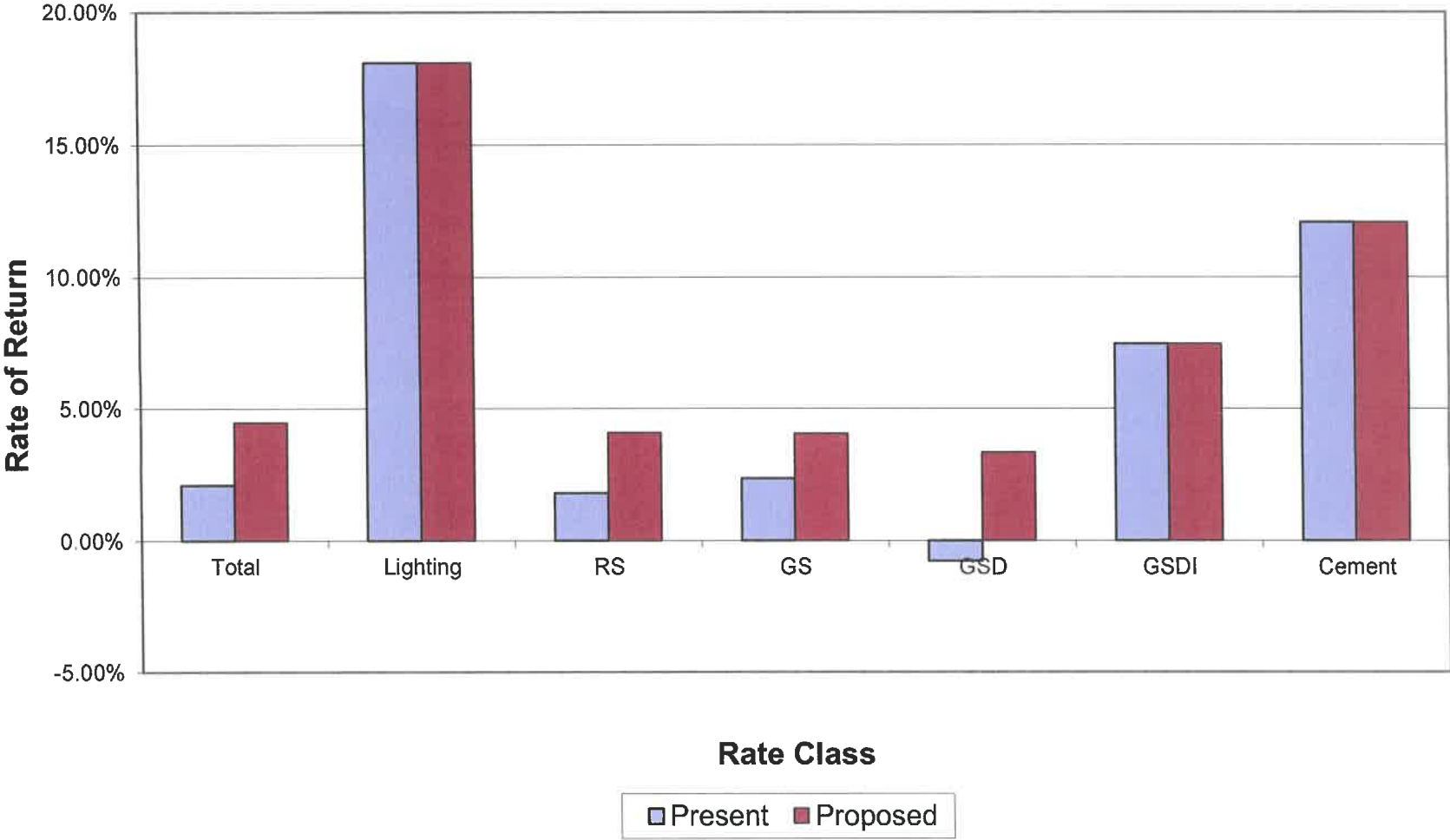
A	B	C	D	E	F	G	H	I
Line No.	Rate Class	Total Electric Revenue	Allocated Production Expenses	Allocated Transmission Expenses	Allocated Distribution Expenses	Total Allocated Expenses	Operating Margins	Allocated Rate of Return
1	Lighting	\$8,765,870	\$2,289,893	\$140,150	\$2,078,068	\$4,508,111	\$4,257,759	18.09%
2	Residential Service (RS)	\$347,613,963	\$183,195,574	\$35,499,952	\$131,389,129	\$350,084,656	(\$2,470,693)	1.80%
3	General Service Non-Dem. (GS)	\$30,054,819	\$14,812,886	\$2,534,473	\$12,592,166	\$29,939,525	\$115,294	2.35%
4	General Service Demand (GSD)	\$77,790,824	\$54,306,827	\$8,923,604	\$17,317,241	\$80,547,672	(\$2,756,848)	-0.77%
5	Gen. Serv. Dem.-Interrup. (GSDI)	\$4,227,757	\$2,869,879	\$227,593	\$899,112	\$3,996,583	\$231,174	7.45%
6	Cement Plant	\$8,408,344	\$7,331,260	\$0	\$702,990	\$8,034,249	\$374,094	12.05%
21	Total System	\$476,861,578	\$264,806,318	\$47,325,772	\$164,978,706	\$477,110,797	(\$249,219)	2.10%

Sumter EC

Functionalized Allocated Income Statement (Proposed Rate)
By Rate Class

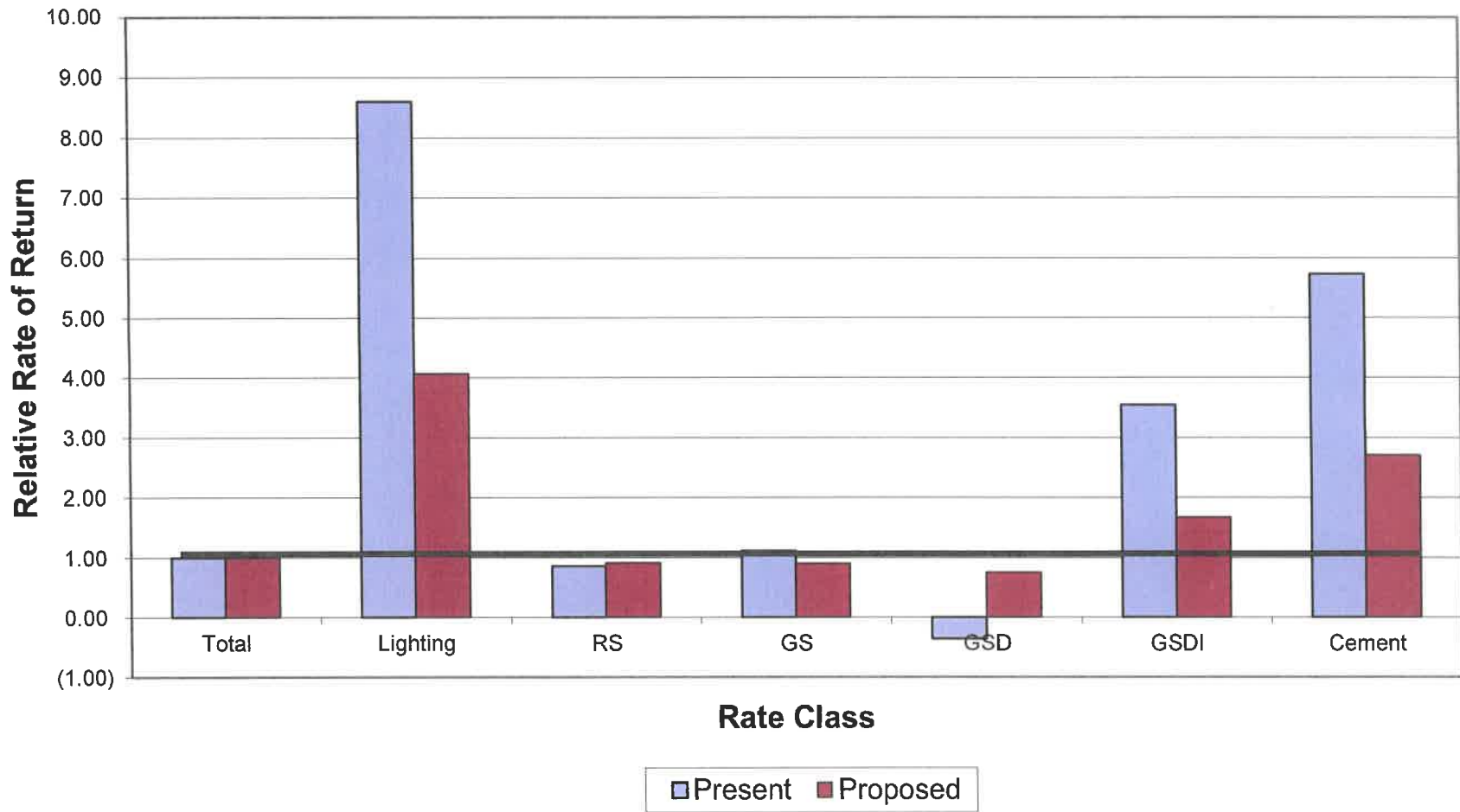
A	B	C	D	E	F	G	H	I
Line No.	Rate Class	Total Electric Revenue	Allocated Production Expenses	Allocated Transmission Expenses	Allocated Distribution Expenses	Total Allocated Expenses	Operating Margins	Allocated Rate of Return
1	Lighting	\$8,765,870	\$2,289,893	\$140,150	\$2,078,068	\$4,508,111	\$4,257,759	18.09%
2	Residential Service (RS)	\$362,711,546	\$183,195,574	\$35,499,952	\$131,389,129	\$350,084,656	\$12,626,889	4.08%
3	General Service Non-Dem. (GS)	\$31,196,916	\$14,812,886	\$2,534,473	\$12,592,166	\$29,939,525	\$1,257,392	4.04%
4	General Service Demand (GSD)	\$81,633,621	\$54,306,827	\$8,923,604	\$17,317,241	\$80,547,672	\$1,085,949	3.33%
5	Gen. Serv. Dem.-Interrup. (GSDI)	\$4,227,757	\$2,869,879	\$227,593	\$899,112	\$3,996,583	\$231,174	7.45%
6	Cement Plant	\$8,408,344	\$7,331,260	\$0	\$702,990	\$8,034,249	\$374,094	12.05%
21	Total System	\$496,944,054	\$264,806,318	\$47,325,772	\$164,978,706	\$477,110,797	\$19,833,258	4.45%

Sumter EC Rate of Return



Sumter EC

Relative Rate of Return



**SUMTER ELECTRIC COOPERATIVE
SUMMARY OF REVENUE**

<u>Line No.</u>	<u>Consumer Classification</u> (a)	<u>Adjusted Number of Consumers</u> (b)	<u>Adjusted Annual kWh</u> (c)	<u>Normalized Revenue</u> (d)	<u>Adjusted for Rate Change Revenue</u> (e)	<u>Revenue Change</u> (f)	<u>Percent Change</u> (g)
1	Residential Service (RS)	207,145	2,565,988,231	\$337,873,044	\$352,970,627	\$15,097,582	4.47%
2	General Service Non-Demand (GS)	18,275	219,651,449	\$29,195,460	\$30,337,557	\$1,142,098	3.91%
3	General Service Demand (GSD)	1,463	819,442,451	\$77,722,006	\$81,564,803	\$3,842,797	4.94%
4	General Service Demand-Interruptible (GSDI)	13	50,371,360	\$4,227,166	\$4,227,166	\$0	0.00%
5	Cement Plant	1	124,603,603	\$8,408,344	\$8,408,344	\$0	0.00%
6	Lights	<u>21</u>	<u>38,418,929</u>	<u>\$8,764,883</u>	<u>\$8,764,883</u>	<u>\$0</u>	<u>0.00%</u>
7	TOTAL BASE RATES	226,918	3,818,476,023	\$466,190,902	\$486,273,379	\$20,082,477	4.31%
8	OTHER REVENUE			<u>\$10,670,675</u>	<u>\$10,670,675</u>	<u>\$0</u>	<u>0.00%</u>
9	GRAND TOTAL	226,918	3,818,476,023	\$476,861,578	\$496,944,054	\$20,082,477	4.21%

**SUMTER ELECTRIC COOPERATIVE
COMPARISON OF PRESENT AND PROPOSED RATE STRUCTURES**

Line No.	Rate Component (a)	Present Rates			Proposed Rates			Increase/(Decrease)		Converted Daily Charge (j)
		Base (b)	WPCA (c)	Total (d) (b)+(c)	Base (e)	WPCA (f)	Total (g) (e)+(f)	Amount (h) (g)-(d)	Percent (i) (h)/(d)	
1	Residential Service (RS)									
2	Customer Charge									
3	Post Pay	\$30.00		\$30.00	\$34.50		\$34.50	\$4.50	15.00%	\$1.15
4	Pre-Pay	\$34.20		\$34.20	\$39.00		\$39.00	\$4.80	14.04%	\$1.30
5	Energy Charge									
6	First 1000 kWh	\$0.11060	(\$0.01262)	\$0.09798	\$0.11210	(\$0.01262)	\$0.09948	\$0.00150	1.53%	
7	Over 1000 kWh	\$0.13060	(\$0.01262)	\$0.11798	\$0.13210	(\$0.01262)	\$0.11948	\$0.00150	1.27%	
8										
9	General Service Non-Demand (GS)									
10	Customer Charge									
11	Single Phase	\$32.10		\$32.10	\$36.00		\$36.00	\$3.90	12.15%	\$1.20
12	Multi Phase	\$42.00		\$42.00	\$46.50		\$46.50	\$4.50	10.71%	\$1.55
13	Energy Charge	\$0.11520	(\$0.01262)	\$0.10258	\$0.1165	(\$0.01262)	\$0.10388	\$0.00130	1.27%	
14										
15	General Service Demand (GSD)									
16	Customer Charge	\$80.10		\$80.10	\$90.00		\$90.00	\$9.90	12.36%	\$3.00
17	Demand Charge	\$5.95		\$5.95	\$6.50		\$6.50	\$0.55	9.24%	
18	Energy Charge	\$0.09050	(\$0.01262)	\$0.07788	\$0.09350	(\$0.01262)	\$0.08088	\$0.00300	3.85%	
19										
20	General Service Demand-Interruptible (GSDI)									
21	Customer Charge	\$350.10		\$350.10	\$350.10		\$350.10	\$0.00	0.00%	\$11.67
22	On-Peak Demand Charge	\$13.50		\$13.50	\$13.50		\$13.50	\$0.00	0.00%	
23	Energy Charge	\$0.09400	(\$0.01262)	\$0.08138	\$0.09400	(\$0.01262)	\$0.08138	\$0.00000	0.00%	

SUMTER ELECTRIC COOPERATIVE
Rate Comparison

Residential

Line No.	Usage a	<1> Sumter Schedule RS (Present)	<2> Sumter Schedule RS (Proposed)	Difference d c-b	Percent Difference e d/b
		b	c		
1	0	\$30.00	\$34.50	\$4.50	15.0%
2	500	\$86.05	\$88.05	\$2.00	2.3%
3	1,000	\$142.10	\$141.60	(\$0.50)	-0.4%
4	1,500	\$208.15	\$205.15	(\$3.00)	-1.4%
5	2,000	\$274.20	\$268.70	(\$5.50)	-2.0%
6	2,500	\$340.25	\$332.25	(\$8.00)	-2.4%
7	3,000	\$406.30	\$395.80	(\$10.50)	-2.6%
8	5,000	\$670.50	\$650.00	(\$20.50)	-3.1%

<1> Sumter Normalized WPCA Factor \$0.00150
 <2> Sumter Proposed WPCA Factor (\$0.00500)



Line No.	Usage f	<4> Duke RS-1 (Wint)	<3> Sumter Schedule RS (Proposed)	Difference i g-h	Percent Difference j i/g
		h	g		
9	0	\$12.51	\$34.50	\$21.99	63.7%
10	500	\$81.93	\$88.05	\$6.13	7.0%
11	1,000	\$154.19	\$141.60	(\$12.59)	-8.9%
12	1,500	\$239.94	\$205.15	(\$34.79)	-17.0%
13	2,000	\$325.68	\$268.70	(\$56.98)	-21.2%
14	2,500	\$411.43	\$332.25	(\$79.18)	-23.8%
15	3,000	\$497.17	\$395.80	(\$101.37)	-25.6%
16	5,000	\$840.15	\$650.00	(\$190.15)	-29.3%

<3> Sumter Proposed WPCA Factor (\$0.00500)
 <4> Duke Billing Adjustments (Current Rates)
 Fuel Charge (Over 1000 kWh) \$0.05961
 Fuel Charge (First 1000 kWh) \$0.07031
 Conservation Charge \$0.00320
 Capacity Cost Recovery \$0.01328
 Environmental Charge \$0.00220
 Asset Security Charge \$0.00265
 Storm Protection Plan \$0.00414

**SUMTER ELECTRIC COOPERATIVE
Rate Comparison**

General Service GS - Single Phase

Line No.	Usage a	<1>	<2>	Difference d c-b	Percent
		Sumter Sched. GS (Present) b	Sumter Sched. GS (Proposed) c		Difference e d/b
1	0	\$32.10	\$36.00	\$3.90	12.1%
2	500	\$90.45	\$91.75	\$1.30	1.4%
3	1,000	\$148.80	\$147.50	(\$1.30)	-0.9%
4	2,000	\$265.50	\$259.00	(\$6.50)	-2.4%
5	3,000	\$382.20	\$370.50	(\$11.70)	-3.1%
6	5,000	\$615.60	\$593.50	(\$22.10)	-3.6%
7	10,000	\$1,199.10	\$1,151.00	(\$48.10)	-4.0%
8	15,000	\$1,782.60	\$1,708.50	(\$74.10)	-4.2%

<1> Sumter Normalized WPCA Factor \$0.00150
 <2> Sumter Proposed WPCA Factor (\$0.00500)

Line No.	Usage f	<4>	<3>	Difference i g-h	Percent
		Duke GS-1 h	Sumter Sched. GS (Proposed) g		Difference j i/g
9	0	\$12.78	\$36.00	\$23.22	64.5%
10	500	\$87.03	\$91.75	\$4.72	5.1%
11	1,000	\$161.28	\$147.50	(\$13.78)	-9.3%
12	2,000	\$309.78	\$259.00	(\$50.78)	-19.6%
13	3,000	\$458.28	\$370.50	(\$87.78)	-23.7%
14	5,000	\$755.28	\$593.50	(\$161.78)	-27.3%
15	10,000	\$1,497.78	\$1,151.00	(\$346.78)	-30.1%
16	15,000	\$2,240.28	\$1,708.50	(\$531.78)	-31.1%

<3> Sumter Proposed WPCA Factor (\$0.00500)
 <4> Progress Billing Adjustments (Current Rates)
 Fuel Charge (Secondary) \$0.06266
 Conservation Charge \$0.00288
 Capacity Cost Recovery \$0.01173
 Environmental Charge \$0.00022
 Asset Security Charge \$0.00243
 Storm Protection Plan \$0.00401

SUMTER ELECTRIC COOPERATIVE
Rate Comparison

General Service - Demand (50-500 kW)

Line No.	kW a	kWh/kW b	Usage c	<1> Sumter GSD (Present) d	<2> Sumter GSD (Proposed) e	Difference f e-d	Percent Difference g f/d	<3> Duke GSD-1 h	Difference i e-h	Percent Difference j i/e
1	50	50	2,500	\$607.60	\$636.25	\$28.65	4.72%	\$856.18	(\$219.93)	-34.6%
2	50	200	10,000	\$1,297.60	\$1,300.00	\$2.40	0.18%	\$1,566.13	(\$266.13)	-20.5%
3	50	400	20,000	\$2,217.60	\$2,185.00	(\$32.60)	-1.47%	\$2,512.73	(\$327.73)	-15.0%
4	50	600	30,000	\$3,137.60	\$3,070.00	(\$67.60)	-2.15%	\$3,459.33	(\$389.33)	-12.7%
5	100	50	5,000	\$1,135.10	\$1,182.50	\$47.40	4.18%	\$1,696.33	(\$513.83)	-43.5%
6	100	200	20,000	\$2,515.10	\$2,510.00	(\$5.10)	-0.20%	\$3,116.23	(\$606.23)	-24.2%
7	100	400	40,000	\$4,355.10	\$4,280.00	(\$75.10)	-1.72%	\$5,009.43	(\$729.43)	-17.0%
8	100	600	60,000	\$6,195.10	\$6,050.00	(\$145.10)	-2.34%	\$6,902.63	(\$852.63)	-14.1%
9	250	50	12,500	\$2,717.60	\$2,821.25	\$103.65	3.81%	\$4,216.78	(\$1,395.53)	-49.5%
10	250	200	50,000	\$6,167.60	\$6,140.00	(\$27.60)	-0.45%	\$7,766.53	(\$1,626.53)	-26.5%
11	250	400	100,000	\$10,767.60	\$10,565.00	(\$202.60)	-1.88%	\$12,499.53	(\$1,934.53)	-18.3%
12	250	600	150,000	\$15,367.60	\$14,990.00	(\$377.60)	-2.46%	\$17,232.53	(\$2,242.53)	-15.0%
13	500	50	25,000	\$5,355.10	\$5,552.50	\$197.40	3.69%	\$8,417.53	(\$2,865.03)	-51.6%
14	500	200	100,000	\$12,255.10	\$12,190.00	(\$65.10)	-0.53%	\$15,517.03	(\$3,327.03)	-27.3%
15	500	400	200,000	\$21,455.10	\$21,040.00	(\$415.10)	-1.93%	\$24,983.03	(\$3,943.03)	-18.7%
16	500	600	300,000	\$30,655.10	\$29,890.00	(\$765.10)	-2.50%	\$34,449.03	(\$4,559.03)	-15.3%

<1> Sumter Normalized WPCA Factor

\$0.00150

<2> Sumter Proposed WPCA Factor

(\$0.00500)

<3> Duke Billing Adjustments (Current Rates)

Fuel Charge

\$0.06266

Conservation Charge (\$/kW)

\$0.85000

Capacity Pmt Charge (\$/kW)

\$3.37000

Environmental Charge

\$0.00020

Asset Security Charge

\$0.00209

Storm Protection Plan (\$/kW)

\$1.05000

SUMTER ELECTRIC COOPERATIVE
Determination of Super Off-Peak EV Charging Credit

<u>Line</u> <u>No.</u>	<u>Item</u> (a)	<u>Test Year</u> (b)
1	Average Monthly EV Charging Consumption	394
2	Power Cost (Based on SECO Average Cost per kWh Sold)	\$0.08238
3	Power Cost (Based on Seminole Super Off-Peak Rate)	
4	Seminole Super Off-Peak Rate (\$ per kWh Purchased)	\$0.03266
5	SECO Average System Loss	<u>4.50%</u>
6	Seminole Super Off-Peak Rate (\$ per kWh Sold)	\$0.03420
7	Difference	\$0.04818
8	Savings to SECO by Super Off-Peak Charging	\$18.98
9	Split the Savings (Customer's Portion)	<u>37.00%</u>
10	Proposed Super Off-Peak EV Charging Credit (\$ per Month)	\$7.02