

Florida Demographic Estimating Conference

Tables Conference Packet

July 9, 2015

Florida Resident Population

April 1

Year	Florida Demographic Estimating Conference February 2014			Florida Demographic Estimating Conference July 2015			
	Population	% Change	Change	Population	% Change	Change	
1990	12,938,071	2.27%	287,136	12,938,071	2.27%	287,136	
1991	13,258,732	2.48%	320,661	13,258,732	2.48%	320,661	
1992	13,497,541	1.80%	238,809	13,497,541	1.80%	238,809	
1993	13,730,115	1.72%	232,574	13,730,115	1.72%	232,574	
1994	14,043,757	2.28%	313,642	14,043,757	2.28%	313,642	
1995	14,335,992	2.08%	292,235	14,335,992	2.08%	292,235	
1996	14,623,421	2.00%	287,429	14,623,421	2.00%	287,429	
1997	14,938,314	2.15%	314,893	14,938,314	2.15%	314,893	
1998	15,230,421	1.96%	292,107	15,230,421	1.96%	292,107	
1999	15,580,244	2.30%	349,823	15,580,244	2.30%	349,823	
2000	15,982,824	2.58%	402,580	15,982,824	2.58%	402,580	
2001	16,305,100	2.02%	322,276	16,305,100	2.02%	322,276	
2002	16,634,256	2.02%	329,156	16,634,256	2.02%	329,156	
2003	16,979,706	2.08%	345,450	16,979,706	2.08%	345,450	
2004	17,374,824	2.33%	395,118	17,374,824	2.33%	395,118	
2005	17,778,156	2.32%	403,332	17,778,156	2.32%	403,332	
2006	18,154,475	2.12%	376,319	18,154,475	2.12%	376,319	
2007	18,446,768	1.61%	292,293	18,446,768	1.61%	292,293	
2008	18,613,905	0.91%	167,137	18,613,905	0.91%	167,137	
2009	18,687,425	0.39%	73,520	18,687,425	0.39%	73,520	
2010	18,801,332	0.61%	113,885	18,801,332	0.61%	113,907	
2011	18,905,070	0.55%	103,738	18,905,070	0.55%	103,738	
2012	19,074,434	0.90%	169,364	19,074,434	0.90%	169,364	
2013	19,259,543	0.97%	185,109	19,259,543	0.97%	185,109	
2014	19,507,369	1.29%	247,826	19,507,369	1.29%	247,826	
Begins forecast							
2015	19,789,625	1.45%	282,256	19,817,596	1.59%	310,227	
2016	20,075,695	1.45%	286,070	20,127,723	1.56%	310,127	
2017	20,367,465	1.45%	291,770	20,434,731	1.53%	307,008	
2018	20,658,700	1.43%	291,235	20,738,328	1.49%	303,597	
2019	20,948,450	1.40%	289,750	21,039,709	1.45%	301,381	
			5-Year Averages				5-Year Averages
2020	21,236,667	1.42%	289,408	21,337,694	1.49%	304,020	
2025	22,600,346	1.25%	272,736	22,747,248	1.29%	281,911	
2030	23,872,566	1.10%	254,444	24,022,120	1.10%	254,974	
2035	25,027,345	0.95%	230,956	25,167,322	0.94%	229,040	
2040	26,081,392	0.83%	210,809	26,210,922	0.82%	208,720	

Florida Resident Households

April 1

Year	Florida Demographic Estimating Conference February 2014			Florida Demographic Estimating Conference July 2015		
	Households	% Change	Change	Households	% Change	Change
1990	5,134,869	3.40%	168,985	5,134,869	3.40%	168,985
1991	5,283,154	2.89%	148,285	5,283,154	2.89%	148,285
1992	5,378,499	1.80%	95,345	5,378,499	1.80%	95,345
1993	5,478,476	1.86%	99,977	5,478,476	1.86%	99,977
1994	5,589,093	2.02%	110,617	5,589,093	2.02%	110,617
1995	5,697,328	1.94%	108,235	5,697,328	1.94%	108,235
1996	5,806,031	1.91%	108,703	5,806,031	1.91%	108,703
1997	5,929,613	2.13%	123,582	5,929,613	2.13%	123,582
1998	6,040,514	1.87%	110,901	6,040,514	1.87%	110,901
1999	6,182,346	2.35%	141,832	6,182,346	2.35%	141,832
2000	6,338,075	2.52%	155,729	6,338,075	2.52%	155,729
2001	6,467,215	2.04%	129,140	6,467,215	2.04%	129,140
2002	6,599,035	2.04%	131,820	6,599,035	2.04%	131,820
2003	6,737,370	2.10%	138,335	6,737,370	2.10%	138,335
2004	6,895,469	2.35%	158,099	6,895,469	2.35%	158,099
2005	7,056,889	2.34%	161,420	7,056,889	2.34%	161,420
2006	7,207,645	2.14%	150,756	7,207,645	2.14%	150,756
2007	7,312,907	1.46%	105,262	7,312,907	1.46%	105,262
2008	7,368,319	0.76%	55,412	7,368,319	0.76%	55,412
2009	7,386,570	0.25%	18,251	7,386,570	0.25%	18,251
2010	7,420,812	0.46%	34,242	7,420,812	0.46%	34,242
2011	7,461,978	0.55%	41,166	7,461,978	0.55%	41,166
2012	7,537,442	1.01%	75,464	7,537,442	1.01%	75,464
2013	7,610,153	0.96%	72,711	7,610,153	0.96%	72,711
2014	7,669,541	0.78%	59,388	7,669,541	0.78%	59,388
Begins forecast						
2015	7,782,772	1.48%	113,231	7,768,092	1.28%	98,551
2016	7,900,810	1.52%	118,038	7,892,736	1.60%	124,644
2017	8,021,957	1.53%	121,147	8,019,541	1.61%	126,805
2018	8,143,365	1.51%	121,408	8,145,919	1.58%	126,378
2019	8,264,373	1.49%	121,008	8,271,934	1.55%	126,015
			5-Year Averages			
2020	8,384,948	1.50%	120,435	8,396,831	1.57%	125,748
2025	8,964,598	1.35%	115,930	8,997,093	1.39%	120,052
2030	9,505,195	1.18%	108,119	9,543,800	1.19%	109,341
2035	9,994,295	1.01%	97,820	10,033,909	1.01%	98,022
2040	10,458,267	0.91%	92,794	10,494,113	0.90%	92,041

Quarterly Data Table

QUARTERLY FORECAST TABLES

	<u>2008-1</u>	<u>2008-2</u>	<u>2008-3</u>	<u>2008-4</u>	<u>2009-1</u>	<u>2009-2</u>	<u>2009-3</u>	<u>2009-4</u>	<u>2010-1</u>	<u>2010-2</u>	<u>2010-3</u>	<u>2010-4</u>	<u>2011-1</u>	<u>2011-2</u>	<u>2011-3</u>	<u>2011-4</u>	<u>2012-1</u>	<u>2012-2</u>
Population																		
FDEC, 2015 February	18,599.6	18,625.4	18,645.5	18,661.9	18,678.6	18,699.6	18,726.1	18,755.5	18,786.1	18,814.0	18,838.5	18,862.9	18,890.3	18,923.5	18,962.8	19,006.3	19,051.6	19,096.6
FDEC, 2015 July	18,599.6	18,625.4	18,645.5	18,661.9	18,678.6	18,699.6	18,726.1	18,755.5	18,786.1	18,813.9	18,838.3	18,862.7	18,890.2	18,923.4	18,962.7	19,006.3	19,051.6	19,096.7
Population Growth Rate																		
FDEC, 2015 February	0.72	0.56	0.43	0.35	0.36	0.45	0.57	0.63	0.65	0.60	0.52	0.52	0.58	0.70	0.83	0.92	0.96	0.95
FDEC, 2015 July	0.72	0.56	0.43	0.35	0.36	0.45	0.57	0.63	0.65	0.59	0.52	0.52	0.58	0.71	0.83	0.92	0.96	0.95
Net Change in Population																		
FDEC, 2015 February	33.2	25.8	20.1	16.4	16.6	21.1	26.4	29.5	30.5	27.9	24.5	24.4	27.3	33.2	39.4	43.5	45.3	45.0
FDEC, 2015 July	33.2	25.8	20.1	16.4	16.6	21.1	26.4	29.5	30.5	27.9	24.4	24.4	27.5	33.2	39.3	43.5	45.3	45.1
Households																		
FDEC, 2015 February	7,363.9	7,371.6	7,377.0	7,380.7	7,384.5	7,390.0	7,397.7	7,406.6	7,416.0	7,425.3	7,434.4	7,444.2	7,455.7	7,469.9	7,487.0	7,506.3	7,526.9	7,547.4
FDEC, 2015 July	7,363.9	7,371.6	7,377.0	7,380.7	7,384.5	7,390.0	7,397.7	7,406.6	7,416.0	7,425.2	7,434.2	7,443.9	7,455.5	7,470.0	7,487.4	7,506.8	7,527.2	7,547.5
Household Growth Rate																		
FDEC, 2015 February	0.58	0.42	0.29	0.20	0.20	0.30	0.41	0.48	0.51	0.50	0.49	0.53	0.62	0.77	0.92	1.03	1.10	1.10
FDEC, 2015 July	0.58	0.42	0.29	0.20	0.20	0.30	0.41	0.48	0.51	0.50	0.48	0.52	0.63	0.78	0.93	1.04	1.09	1.08
Net Change in Households																		
FDEC, 2015 February	10.6	7.7	5.4	3.8	3.7	5.5	7.7	8.9	9.5	9.3	9.1	9.8	11.5	14.2	17.1	19.2	20.6	20.5
FDEC, 2015 July	10.6	7.7	5.4	3.8	3.7	5.5	7.7	8.9	9.5	9.2	8.9	9.7	11.6	14.5	17.4	19.4	20.3	20.3
Household Size																		
FDEC, 2015 February	2.526	2.527	2.528	2.528	2.529	2.530	2.531	2.532	2.533	2.534	2.534	2.534	2.534	2.533	2.533	2.532	2.531	2.530
FDEC, 2015 July	2.526	2.527	2.528	2.528	2.529	2.530	2.531	2.532	2.533	2.534	2.534	2.534	2.534	2.533	2.533	2.532	2.531	2.530
Household Size Growth Rate																		
FDEC, 2015 February	0.14	0.14	0.14	0.15	0.15	0.15	0.15	0.15	0.14	0.09	0.03	-0.01	-0.04	-0.06	-0.08	-0.11	-0.15	-0.15
FDEC, 2015 July	0.14	0.14	0.14	0.15	0.15	0.15	0.15	0.15	0.14	0.10	0.04	-0.01	-0.04	-0.07	-0.10	-0.12	-0.13	-0.13
Net Migration																		
FDEC, 2015 February	17.0	10.3	5.2	2.1	2.9	7.9	13.8	17.5	19.4	17.3	14.3	14.4	17.0	23.0	29.3	33.6	35.8	35.7
FDEC, 2015 July	17.0	10.3	5.2	2.1	2.9	7.9	13.8	17.5	19.4	17.2	14.1	14.3	17.2	23.0	29.3	33.7	35.8	35.8
Births																		
FDEC, 2015 February	58.7	58.1	57.6	57.0	56.2	55.6	55.1	54.6	54.1	53.7	53.5	53.3	53.4	53.3	53.3	53.2	53.2	53.2
FDEC, 2015 July	58.7	58.1	57.6	57.0	56.2	55.6	55.1	54.6	54.1	53.7	53.5	53.3	53.4	53.3	53.3	53.2	53.2	53.2
Deaths																		
FDEC, 2015 February	42.5	42.6	42.7	42.7	42.4	42.4	42.5	42.6	43.0	43.1	43.2	43.2	43.1	43.1	43.2	43.4	43.6	43.8
FDEC, 2015 July	42.5	42.6	42.7	42.7	42.4	42.4	42.5	42.6	43.0	43.1	43.2	43.2	43.1	43.1	43.2	43.4	43.6	43.8
Net Natural Increase																		
FDEC, 2015 February	16.2	15.5	14.9	14.3	13.8	13.2	12.6	12.0	11.1	10.6	10.3	10.0	10.3	10.2	10.0	9.9	9.5	9.3
FDEC, 2015 July	16.2	15.5	14.9	14.3	13.8	13.2	12.6	12.0	11.1	10.6	10.3	10.0	10.3	10.2	10.0	9.9	9.5	9.3

Quarterly Data Table

QUARTERLY FORECAST TABLES

	<u>2012-3</u>	<u>2012-4</u>	<u>2013-1</u>	<u>2013-2</u>	<u>2013-3</u>	<u>2013-4</u>	<u>2014-1</u>	<u>2014-2</u>	<u>2014-3</u>	<u>2014-4</u>	<u>2015-1</u>	<u>2015-2</u>	<u>2015-3</u>	<u>2015-4</u>	<u>2016-1</u>	<u>2016-2</u>	<u>2016-3</u>	<u>2016-4</u>
Population																		
FDEC, 2015 February	19,141.0	19,186.5	19,234.6	19,287.4	19,345.3	19,407.6	19,473.5	19,542.0	19,612.2	19,683.0	19,754.1	19,825.2	19,896.5	19,967.8	20,039.5	20,111.9	20,184.7	20,257.9
FDEC, 2015 July	19,141.3	19,186.8	19,234.7	19,286.8	19,343.7	19,405.7	19,472.7	19,544.4	19,620.1	19,698.5	19,777.8	19,856.9	19,935.0	20,012.4	20,089.3	20,166.2	20,243.0	20,319.8
Population Growth Rate																		
FDEC, 2015 February	0.93	0.95	1.01	1.10	1.21	1.29	1.37	1.41	1.44	1.45	1.45	1.45	1.45	1.44	1.44	1.45	1.46	1.46
FDEC, 2015 July	0.94	0.95	1.00	1.09	1.19	1.29	1.39	1.48	1.56	1.61	1.62	1.61	1.58	1.56	1.55	1.54	1.53	1.53
Net Change in Population																		
FDEC, 2015 February	44.4	45.4	48.1	52.8	57.9	62.2	66.0	68.5	70.1	70.8	71.1	71.1	71.3	71.4	71.7	72.4	72.8	73.1
FDEC, 2015 July	44.6	45.4	48.0	52.0	57.0	62.0	66.9	71.7	75.7	78.3	79.4	79.0	78.1	77.4	77.0	76.8	76.9	76.8
Households																		
FDEC, 2015 February	7,567.0	7,585.6	7,602.4	7,617.2	7,630.8	7,644.6	7,660.7	7,681.2	7,709.9	7,739.0	7,768.2	7,797.4	7,826.7	7,856.2	7,885.8	7,915.8	7,945.9	7,976.3
FDEC, 2015 July	7,567.0	7,585.3	7,602.2	7,617.3	7,631.2	7,645.4	7,661.1	7,679.7	7,701.7	7,726.6	7,753.9	7,783.1	7,813.5	7,844.9	7,876.8	7,908.7	7,940.5	7,972.1
Household Growth Rate																		
FDEC, 2015 February	1.04	0.99	0.88	0.78	0.72	0.72	0.84	1.08	1.50	1.52	1.52	1.51	1.51	1.52	1.52	1.53	1.53	1.54
FDEC, 2015 July	1.04	0.97	0.89	0.80	0.74	0.74	0.83	0.98	1.15	1.30	1.42	1.51	1.58	1.62	1.63	1.63	1.62	1.61
Net Change in Households																		
FDEC, 2015 February	19.6	18.6	16.7	14.8	13.6	13.8	16.1	20.6	28.6	29.1	29.2	29.2	29.3	29.5	29.7	29.9	30.1	30.4
FDEC, 2015 July	19.5	18.4	16.8	15.1	14.0	14.1	15.7	18.6	22.0	24.9	27.3	29.1	30.5	31.4	31.8	31.9	31.8	31.7
Household Size																		
FDEC, 2015 February	2.530	2.529	2.530	2.532	2.535	2.539	2.542	2.544	2.544	2.543	2.543	2.543	2.542	2.542	2.541	2.541	2.540	2.540
FDEC, 2015 July	2.530	2.529	2.530	2.532	2.535	2.538	2.542	2.545	2.548	2.549	2.551	2.551	2.551	2.551	2.550	2.550	2.549	2.549
Household Size Growth Rate																		
FDEC, 2015 February	-0.11	-0.03	0.12	0.32	0.49	0.57	0.52	0.33	-0.06	-0.06	-0.06	-0.06	-0.06	-0.07	-0.07	-0.07	-0.07	-0.08
FDEC, 2015 July	-0.10	-0.02	0.11	0.29	0.45	0.54	0.56	0.50	0.41	0.30	0.20	0.09	0.01	-0.05	-0.08	-0.09	-0.08	-0.08
Net Migration																		
FDEC, 2015 February	35.2	36.4	39.3	44.0	49.2	53.5	57.0	59.5	61.1	61.9	62.2	62.2	62.4	62.5	62.8	63.5	64.0	64.3
FDEC, 2015 July	35.4	36.4	39.0	43.2	48.2	53.3	58.2	63.0	67.0	69.6	70.7	70.3	69.4	68.6	68.2	68.1	68.1	68.1
Births																		
FDEC, 2015 February	53.3	53.4	53.5	53.7	53.9	54.1	54.5	54.7	55.0	55.3	55.5	55.8	56.0	56.3	56.5	56.7	57.0	57.2
FDEC, 2015 July	53.3	53.4	53.5	53.7	53.9	54.1	54.5	54.8	55.1	55.5	55.8	56.2	56.5	56.9	57.3	57.7	58.1	58.4
Deaths																		
FDEC, 2015 February	44.1	44.3	44.6	44.9	45.1	45.4	45.5	45.8	46.0	46.3	46.6	46.9	47.1	47.4	47.6	47.9	48.1	48.4
FDEC, 2015 July	44.1	44.3	44.6	44.9	45.1	45.4	45.8	46.1	46.4	46.8	47.1	47.5	47.8	48.2	48.6	49.0	49.3	49.7
Net Natural Increase																		
FDEC, 2015 February	9.2	9.0	8.9	8.8	8.8	8.8	9.0	9.0	9.0	9.0	8.9	8.9	8.9	8.9	8.9	8.9	8.8	8.8
FDEC, 2015 July	9.2	9.0	8.9	8.8	8.7	8.7	8.7	8.7	8.7	8.7	8.7	8.7	8.7	8.7	8.7	8.7	8.7	8.7

Quarterly Data Table

QUARTERLY FORECAST TABLES

	2017-1	2017-2	2017-3	2017-4	2018-1	2018-2	2018-3	2018-4	2019-1	2019-2	2019-3	2019-4	2020-1	2020-2	2020-3	2020-4	2021-1	2021-2
Population																		
FDEC, 2015 February	20,331.0	20,404.0	20,476.9	20,549.7	20,622.4	20,695.0	20,767.6	20,840.0	20,912.4	20,984.5	21,056.8	21,128.9	21,200.8	21,272.3	21,343.4	21,414.0	21,484.3	21,554.3
FDEC, 2015 July	20,396.5	20,472.9	20,549.0	20,624.8	20,700.5	20,776.1	20,851.5	20,926.8	21,002.1	21,077.2	21,151.9	21,226.5	21,300.7	21,374.5	21,448.0	21,521.2	21,594.0	21,666.5
Population Growth Rate																		
FDEC, 2015 February	1.45	1.44	1.44	1.43	1.42	1.42	1.41	1.40	1.40	1.39	1.39	1.38	1.37	1.36	1.34	1.33	1.32	1.31
FDEC, 2015 July	1.52	1.51	1.50	1.49	1.48	1.47	1.46	1.45	1.45	1.44	1.43	1.42	1.41	1.39	1.38	1.37	1.36	1.35
Net Change in Population																		
FDEC, 2015 February	73.1	73.0	72.9	72.8	72.7	72.6	72.5	72.5	72.3	72.2	72.3	72.1	71.9	71.5	71.1	70.7	70.3	69.9
FDEC, 2015 July	76.6	76.4	76.1	75.9	75.7	75.5	75.4	75.3	75.3	75.1	74.8	74.5	74.2	73.9	73.5	73.2	72.8	72.5
Households																		
FDEC, 2015 February	8,006.7	8,037.2	8,067.6	8,097.9	8,128.2	8,158.5	8,188.8	8,219.1	8,249.3	8,279.5	8,309.7	8,339.8	8,369.9	8,399.9	8,429.8	8,459.6	8,489.2	8,518.8
FDEC, 2015 July	8,003.7	8,035.3	8,066.9	8,098.5	8,130.1	8,161.7	8,193.2	8,224.7	8,256.2	8,287.6	8,318.9	8,350.2	8,381.3	8,412.3	8,443.1	8,473.9	8,504.5	8,535.1
Household Growth Rate																		
FDEC, 2015 February	1.53	1.53	1.52	1.51	1.51	1.50	1.49	1.49	1.48	1.47	1.47	1.46	1.45	1.44	1.43	1.42	1.41	1.40
FDEC, 2015 July	1.60	1.59	1.58	1.58	1.57	1.56	1.55	1.55	1.54	1.53	1.52	1.51	1.50	1.49	1.48	1.46	1.45	1.45
Net Change in Households																		
FDEC, 2015 February	30.4	30.4	30.4	30.4	30.3	30.3	30.3	30.3	30.2	30.2	30.2	30.2	30.1	30.0	29.9	29.8	29.7	29.6
FDEC, 2015 July	31.6	31.6	31.6	31.6	31.6	31.6	31.5	31.5	31.5	31.4	31.3	31.2	31.1	31.0	30.9	30.7	30.6	30.6
Household Size																		
FDEC, 2015 February	2.539	2.539	2.538	2.538	2.537	2.537	2.536	2.536	2.535	2.535	2.534	2.533	2.533	2.532	2.532	2.531	2.531	2.530
FDEC, 2015 July	2.548	2.548	2.547	2.547	2.546	2.546	2.545	2.544	2.544	2.543	2.543	2.542	2.541	2.541	2.540	2.540	2.539	2.539
Household Size Growth Rate																		
FDEC, 2015 February	-0.08	-0.08	-0.08	-0.08	-0.08	-0.08	-0.08	-0.08	-0.08	-0.08	-0.08	-0.08	-0.08	-0.08	-0.09	-0.09	-0.09	-0.09
FDEC, 2015 July	-0.08	-0.08	-0.09	-0.09	-0.09	-0.09	-0.09	-0.09	-0.09	-0.09	-0.09	-0.09	-0.09	-0.09	-0.09	-0.09	-0.09	-0.09
Net Migration																		
FDEC, 2015 February	64.3	64.2	64.2	64.1	64.0	64.0	64.1	64.1	64.0	64.0	64.3	64.2	64.1	64.0	63.8	63.6	63.5	63.4
FDEC, 2015 July	67.9	67.7	67.4	67.1	66.9	66.8	66.7	66.7	66.6	66.5	66.3	66.2	66.1	65.9	65.8	65.6	65.6	65.5
Births																		
FDEC, 2015 February	57.5	57.7	57.9	58.1	58.4	58.6	58.8	59.1	59.3	59.5	59.7	59.9	60.1	60.3	60.5	60.7	60.9	61.1
FDEC, 2015 July	58.7	59.1	59.4	59.7	59.9	60.2	60.4	60.7	60.9	61.1	61.3	61.4	61.6	61.7	61.8	61.9	62.0	62.1
Deaths																		
FDEC, 2015 February	48.6	48.9	49.2	49.4	49.7	50.0	50.3	50.7	51.0	51.3	51.7	52.0	52.4	52.8	53.2	53.6	54.1	54.5
FDEC, 2015 July	50.0	50.3	50.6	50.9	51.2	51.4	51.7	52.0	52.2	52.5	52.8	53.1	53.4	53.8	54.1	54.4	54.8	55.1
Net Natural Increase																		
FDEC, 2015 February	8.8	8.8	8.8	8.7	8.7	8.6	8.5	8.4	8.3	8.2	8.0	7.9	7.7	7.5	7.3	7.1	6.8	6.5
FDEC, 2015 July	8.7	8.7	8.7	8.7	8.8	8.8	8.7	8.7	8.6	8.5	8.4	8.3	8.1	8.0	7.8	7.5	7.3	7.0

Quarterly Data Table

QUARTERLY FORECAST TABLES

	<u>2021-3</u>	<u>2021-4</u>	<u>2022-1</u>	<u>2022-2</u>	<u>2022-3</u>	<u>2022-4</u>	<u>2023-1</u>	<u>2023-2</u>	<u>2023-3</u>	<u>2023-4</u>	<u>2024-1</u>	<u>2024-2</u>
Population												
FDEC, 2015 February	21,623.8	21,693.1	21,761.9	21,830.5	21,898.8	21,966.7	22,034.4	22,101.8	22,169.0	22,235.9	22,302.6	22,369.1
FDEC, 2015 July	21,738.7	21,810.5	21,882.0	21,953.1	22,023.9	22,094.4	22,164.6	22,234.4	22,303.8	22,373.0	22,441.8	22,510.2
Population Growth Rate												
FDEC, 2015 February	1.30	1.29	1.28	1.27	1.26	1.25	1.24	1.23	1.22	1.21	1.21	1.20
FDEC, 2015 July	1.34	1.33	1.32	1.31	1.30	1.29	1.28	1.27	1.26	1.25	1.24	1.23
Net Change in Population												
FDEC, 2015 February	69.6	69.2	68.9	68.6	68.3	68.0	67.7	67.4	67.2	66.9	66.7	66.5
FDEC, 2015 July	72.2	71.8	71.5	71.2	70.8	70.5	70.1	69.8	69.5	69.1	68.8	68.5
Households												
FDEC, 2015 February	8,548.3	8,577.6	8,606.9	8,636.0	8,665.1	8,694.0	8,723.0	8,751.8	8,780.6	8,809.3	8,837.9	8,866.3
FDEC, 2015 July	8,565.6	8,596.0	8,626.3	8,656.5	8,686.7	8,716.7	8,746.6	8,776.5	8,806.2	8,835.8	8,865.4	8,894.9
Household Growth Rate												
FDEC, 2015 February	1.39	1.38	1.37	1.36	1.35	1.34	1.34	1.33	1.32	1.31	1.30	1.29
FDEC, 2015 July	1.44	1.43	1.42	1.41	1.40	1.39	1.38	1.37	1.36	1.35	1.34	1.34
Net Change in Households												
FDEC, 2015 February	29.5	29.4	29.2	29.1	29.1	29.0	28.9	28.9	28.8	28.7	28.6	28.4
FDEC, 2015 July	30.5	30.4	30.3	30.2	30.1	30.0	29.9	29.8	29.7	29.6	29.6	29.5
Household Size												
FDEC, 2015 February	2.530	2.529	2.528	2.528	2.527	2.527	2.526	2.525	2.525	2.524	2.524	2.523
FDEC, 2015 July	2.538	2.537	2.537	2.536	2.535	2.535	2.534	2.533	2.533	2.532	2.531	2.531
Household Size Growth Rate												
FDEC, 2015 February	-0.09	-0.09	-0.09	-0.09	-0.09	-0.10	-0.10	-0.10	-0.10	-0.10	-0.10	-0.09
FDEC, 2015 July	-0.10	-0.10	-0.10	-0.10	-0.10	-0.10	-0.10	-0.10	-0.10	-0.11	-0.11	-0.11
Net Migration												
FDEC, 2015 February	63.3	63.3	63.3	63.3	63.4	63.4	63.5	63.7	63.8	64.0	64.2	64.4
FDEC, 2015 July	65.5	65.5	65.6	65.6	65.6	65.7	65.7	65.8	65.8	65.8	65.8	65.9
Births												
FDEC, 2015 February	61.3	61.4	61.6	61.8	61.9	62.1	62.2	62.4	62.5	62.7	62.8	63.0
FDEC, 2015 July	62.1	62.2	62.1	62.2	62.2	62.3	62.3	62.4	62.4	62.5	62.6	62.7
Deaths												
FDEC, 2015 February	55.0	55.5	56.0	56.5	57.0	57.6	58.1	58.6	59.2	59.7	60.4	60.9
FDEC, 2015 July	55.5	55.9	56.2	56.6	57.0	57.4	57.9	58.3	58.7	59.2	59.6	60.1
Net Natural Increase												
FDEC, 2015 February	6.3	5.9	5.6	5.2	4.9	4.5	4.1	3.7	3.4	3.0	2.5	2.1
FDEC, 2015 July	6.7	6.3	5.9	5.6	5.2	4.8	4.4	4.0	3.7	3.3	3.0	2.6

FISCAL YEAR
FORECAST TABLES

Fiscal Year Data Table

	<u>1990-91</u>	<u>1991-92</u>	<u>1992-93</u>	<u>1993-94</u>	<u>1994-95</u>	<u>1995-96</u>	<u>1996-97</u>	<u>1997-98</u>	<u>1998-99</u>	<u>1999-00</u>	<u>2000-01</u>	<u>2001-02</u>	<u>2002-03</u>	<u>2003-04</u>	<u>2004-05</u>
Population															
FDEC, 2015 February	13,178.0	13,442.6	13,670.0	13,962.2	14,264.9	14,550.7	14,859.1	15,158.3	15,488.4	15,881.7	16,228.0	16,551.2	16,892.0	17,273.8	17,677.3
FDEC, 2015 July	13,178.0	13,442.6	13,670.0	13,962.2	14,264.9	14,550.7	14,859.1	15,158.3	15,488.4	15,881.7	16,228.0	16,551.2	16,892.0	17,273.8	17,677.3
Growth Rate															
FDEC, 2015 February	2.42	2.01	1.69	2.14	2.17	2.00	2.12	2.01	2.18	2.54	2.18	1.99	2.06	2.26	2.34
FDEC, 2015 July	2.42	2.01	1.69	2.14	2.17	2.00	2.12	2.01	2.18	2.54	2.18	1.99	2.06	2.26	2.34
Net Change in Population															
FDEC, 2015 February	311.4	264.6	227.4	292.2	302.8	285.8	308.4	299.2	330.1	393.2	346.4	323.2	340.9	381.8	403.5
FDEC, 2015 July	311.4	264.6	227.4	292.2	302.8	285.8	308.4	299.2	330.1	393.2	346.4	323.2	340.9	381.8	403.5
Households															
FDEC, 2015 February	5,230.7	5,335.4	5,424.2	5,538.0	5,655.6	5,766.7	5,887.3	6,005.5	6,137.4	6,296.9	6,436.4	6,565.8	6,702.3	6,855.1	7,016.4
FDEC, 2015 July	5,230.7	5,335.4	5,424.2	5,538.0	5,655.6	5,766.7	5,887.3	6,005.5	6,137.4	6,296.9	6,436.4	6,565.8	6,702.3	6,855.1	7,016.4
Growth Rate															
FDEC, 2015 February	2.44	2.00	1.66	2.10	2.12	1.96	2.09	2.01	2.20	2.60	2.22	2.01	2.08	2.28	2.35
FDEC, 2015 July	2.44	2.00	1.66	2.10	2.12	1.96	2.09	2.01	2.20	2.60	2.22	2.01	2.08	2.28	2.35
Net Change in Households															
FDEC, 2015 February	124.7	104.7	88.8	113.8	117.7	111.1	120.6	118.1	132.0	159.5	139.5	129.3	136.5	152.8	161.3
FDEC, 2015 July	124.7	104.7	88.8	113.8	117.7	111.1	120.6	118.1	132.0	159.5	139.5	129.3	136.5	152.8	161.3
Household Size															
FDEC, 2015 February	2.519	2.520	2.520	2.521	2.522	2.523	2.524	2.524	2.524	2.522	2.521	2.521	2.520	2.520	2.519
FDEC, 2015 July	2.519	2.520	2.520	2.521	2.522	2.523	2.524	2.524	2.524	2.522	2.521	2.521	2.520	2.520	2.519
Growth Rate															
FDEC, 2015 February	-0.02	0.01	0.03	0.04	0.04	0.04	0.03	0.01	-0.02	-0.06	-0.03	-0.02	-0.02	-0.02	-0.02
FDEC, 2015 July	-0.02	0.01	0.03	0.04	0.04	0.04	0.03	0.01	-0.02	-0.06	-0.03	-0.02	-0.02	-0.02	-0.02
Net Migration															
FDEC, 2015 February	248.4	208.9	177.4	246.6	262.7	249.6	270.9	260.5	293.9	355.3	306.0	285.5	300.4	335.0	351.1
FDEC, 2015 July	248.4	208.9	177.4	246.6	262.7	249.6	270.9	260.5	293.9	355.3	306.0	285.5	300.4	335.0	351.1
Births															
FDEC, 2015 February	197.0	192.2	192.0	191.7	189.4	188.6	190.7	194.0	196.0	200.5	205.4	205.4	208.5	215.0	221.8
FDEC, 2015 July	197.0	192.2	192.0	191.7	189.4	188.6	190.7	194.0	196.0	200.5	205.4	205.4	208.5	215.0	221.8
Deaths															
FDEC, 2015 February	134.0	136.5	142.0	146.1	149.3	152.4	153.1	155.3	159.8	162.5	165.0	167.7	168.1	168.3	169.4
FDEC, 2015 July	134.0	136.5	142.0	146.1	149.3	152.4	153.1	155.3	159.8	162.5	165.0	167.7	168.1	168.3	169.4
Net Natural Increase															
FDEC, 2015 February	63.0	55.7	50.0	45.6	40.1	36.2	37.5	38.8	36.2	38.0	40.3	37.7	40.4	46.7	52.4
FDEC, 2015 July	63.0	55.7	50.0	45.6	40.1	36.2	37.5	38.8	36.2	38.0	40.3	37.7	40.4	46.7	52.4

FISCAL YEAR
FORECAST TABLES

Fiscal Year Data Table

	<u>2005-06</u>	<u>2006-07</u>	<u>2007-08</u>	<u>2008-09</u>	<u>2009-10</u>	<u>2010-11</u>	<u>2011-12</u>	<u>2012-13</u>	<u>2013-14</u>	<u>2014-15</u>	<u>2015-16</u>	<u>2016-17</u>	<u>2017-18</u>	<u>2018-19</u>
Population														
FDEC, 2015 February	18,062.2	18,378.2	18,578.9	18,671.4	18,770.4	18,878.8	19,029.3	19,212.4	19,442.1	19,718.6	20,003.9	20,294.4	20,586.0	20,876.1
FDEC, 2015 July	18,062.2	18,378.2	18,578.9	18,671.4	18,770.4	18,878.6	19,029.3	19,212.4	19,441.6	19,738.3	20,050.7	20,358.0	20,662.6	20,964.4
Growth Rate														
FDEC, 2015 February	2.18	1.75	1.09	0.50	0.53	0.58	0.80	0.96	1.20	1.42	1.45	1.45	1.44	1.41
FDEC, 2015 July	2.18	1.75	1.09	0.50	0.53	0.58	0.80	0.96	1.19	1.53	1.58	1.53	1.50	1.46
Net Change in Population														
FDEC, 2015 February	384.9	316.0	200.7	92.5	99.0	108.4	150.5	183.0	229.7	276.5	285.3	290.5	291.6	290.1
FDEC, 2015 July	384.9	316.0	200.7	92.5	99.0	108.2	150.7	183.1	229.2	296.7	312.4	307.3	304.6	301.8
Households														
FDEC, 2015 February	7,170.9	7,288.9	7,357.1	7,383.0	7,411.4	7,451.0	7,516.9	7,593.1	7,654.3	7,753.6	7,871.1	7,991.5	8,113.0	8,234.2
FDEC, 2015 July	7,170.9	7,288.9	7,357.1	7,383.0	7,411.4	7,450.9	7,517.2	7,592.9	7,654.4	7,741.3	7,861.0	7,987.9	8,114.3	8,240.4
Growth Rate														
FDEC, 2015 February	2.20	1.65	0.93	0.35	0.38	0.53	0.88	1.01	0.81	1.30	1.52	1.53	1.52	1.49
FDEC, 2015 July	2.20	1.65	0.93	0.35	0.38	0.53	0.89	1.01	0.81	1.14	1.55	1.61	1.58	1.55
Net Change in Households														
FDEC, 2015 February	154.5	118.1	68.1	26.0	28.3	39.6	65.9	76.2	61.3	99.3	117.5	120.4	121.5	121.1
FDEC, 2015 July	154.5	118.1	68.1	26.0	28.3	39.5	66.3	75.7	61.4	87.0	119.7	126.9	126.4	126.1
Household Size														
FDEC, 2015 February	2.519	2.521	2.525	2.529	2.533	2.534	2.532	2.530	2.540	2.543	2.541	2.539	2.537	2.535
FDEC, 2015 July	2.519	2.521	2.525	2.529	2.533	2.534	2.531	2.530	2.540	2.550	2.551	2.549	2.546	2.544
Growth Rate														
FDEC, 2015 February	-0.02	0.10	0.16	0.14	0.15	0.04	-0.09	-0.05	0.39	0.12	-0.07	-0.08	-0.08	-0.08
FDEC, 2015 July	-0.02	0.10	0.16	0.14	0.15	0.04	-0.09	-0.04	0.38	0.39	0.04	-0.08	-0.09	-0.09
Net Migration														
FDEC, 2015 February	322.9	245.0	133.7	36.3	52.7	67.6	111.8	147.1	194.3	240.7	249.8	255.2	257.0	256.7
FDEC, 2015 July	322.9	245.0	133.7	36.3	52.7	67.4	111.9	147.1	194.3	261.8	277.5	272.4	269.6	267.2
Births														
FDEC, 2015 February	232.1	239.3	236.0	226.4	217.4	213.5	212.9	213.8	217.2	221.6	225.5	229.3	233.1	236.7
FDEC, 2015 July	232.1	239.3	236.0	226.4	217.4	213.5	212.9	213.8	217.3	222.6	228.5	234.3	239.1	243.0
Deaths														
FDEC, 2015 February	170.1	168.3	169.0	170.2	171.1	172.7	174.1	177.9	181.8	185.7	190.0	194.0	198.4	203.3
FDEC, 2015 July	170.1	168.3	169.0	170.2	171.1	172.7	174.1	177.8	182.4	187.7	193.6	199.4	204.1	208.4
Net Natural Increase														
FDEC, 2015 February	62.0	71.0	67.0	56.2	46.3	40.8	38.8	35.9	35.5	35.8	35.5	35.3	34.7	33.4
FDEC, 2015 July	62.0	71.0	67.0	56.2	46.3	40.8	38.8	36.0	34.9	34.9	34.9	34.9	35.0	34.6

FISCAL YEAR
FORECAST TABLES

Fiscal Year Data Table

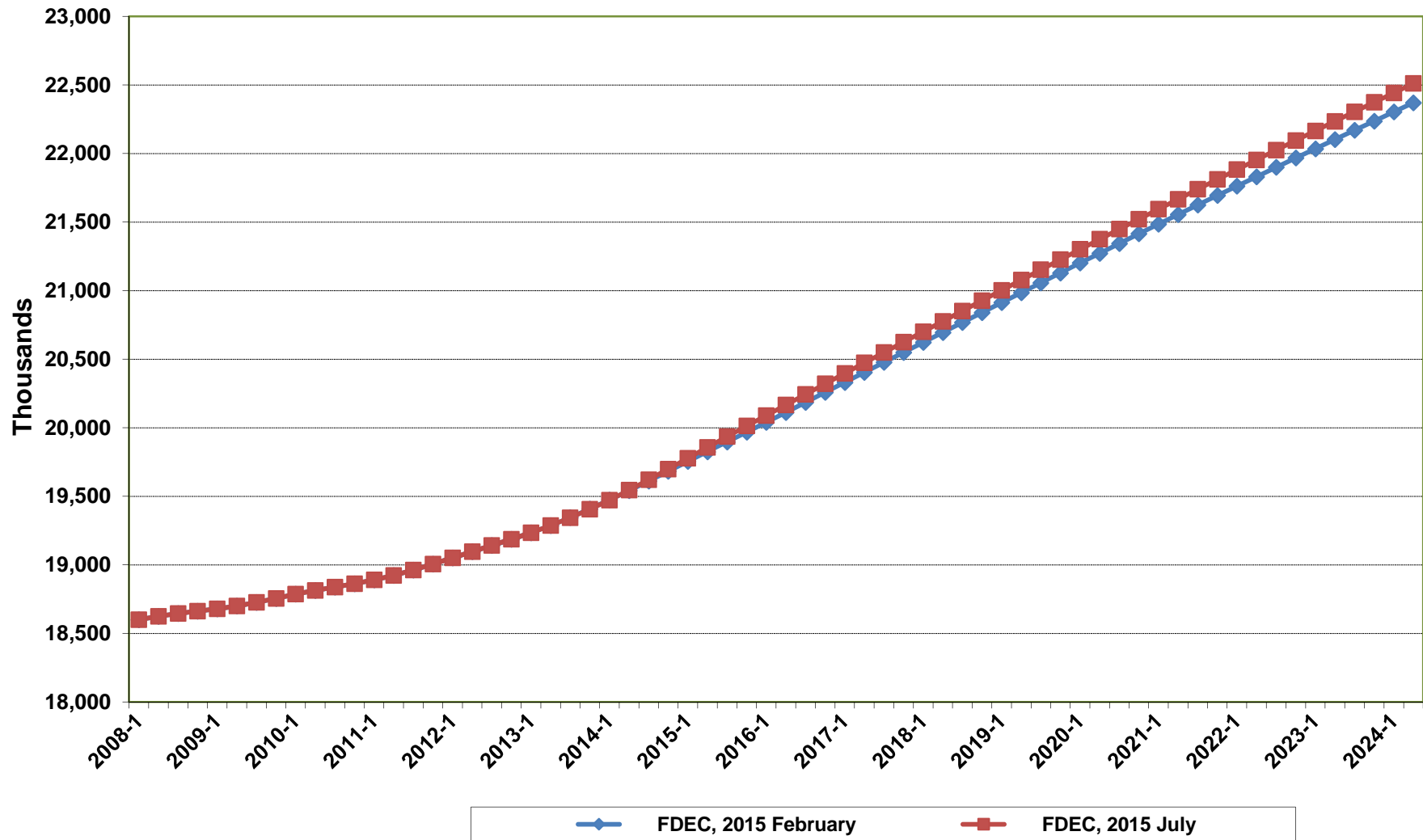
	<u>2019-20</u>	<u>2020-21</u>	<u>2021-22</u>	<u>2022-23</u>	<u>2023-24</u>
Population					
FDEC, 2015 February	21,164.7	21,449.0	21,727.3	22,000.4	22,269.2
FDEC, 2015 July	21,263.4	21,557.4	21,846.1	22,129.3	22,407.2
Growth Rate					
FDEC, 2015 February	1.38	1.34	1.30	1.26	1.22
FDEC, 2015 July	1.43	1.38	1.34	1.30	1.26
Net Change in Population					
FDEC, 2015 February	288.6	284.3	278.3	273.1	268.7
FDEC, 2015 July	299.0	294.0	288.6	283.3	277.9
Households					
FDEC, 2015 February	8,354.8	8,474.4	8,592.2	8,708.5	8,823.6
FDEC, 2015 July	8,365.7	8,489.2	8,611.1	8,731.6	8,850.6
Growth Rate					
FDEC, 2015 February	1.47	1.43	1.39	1.35	1.32
FDEC, 2015 July	1.52	1.48	1.44	1.40	1.36
Net Change in Households					
FDEC, 2015 February	120.7	119.5	117.8	116.3	115.1
FDEC, 2015 July	125.2	123.5	121.9	120.5	119.0
Household Size					
FDEC, 2015 February	2.533	2.531	2.529	2.526	2.524
FDEC, 2015 July	2.542	2.539	2.537	2.534	2.532
Growth Rate					
FDEC, 2015 February	-0.08	-0.09	-0.09	-0.10	-0.10
FDEC, 2015 July	-0.09	-0.09	-0.10	-0.10	-0.11
Net Migration					
FDEC, 2015 February	257.4	256.5	255.3	255.8	257.9
FDEC, 2015 July	266.2	264.5	264.1	264.8	265.3
Births					
FDEC, 2015 February	240.1	243.2	246.0	248.6	251.0
FDEC, 2015 July	246.0	247.9	248.7	249.1	250.2
Deaths					
FDEC, 2015 February	208.9	215.5	223.0	231.3	240.2
FDEC, 2015 July	213.1	218.4	224.2	230.6	237.6
Net Natural Increase					
FDEC, 2015 February	31.2	27.8	23.0	17.3	10.8
FDEC, 2015 July	32.8	29.5	24.5	18.5	12.6

Florida Demographic Estimating Conference

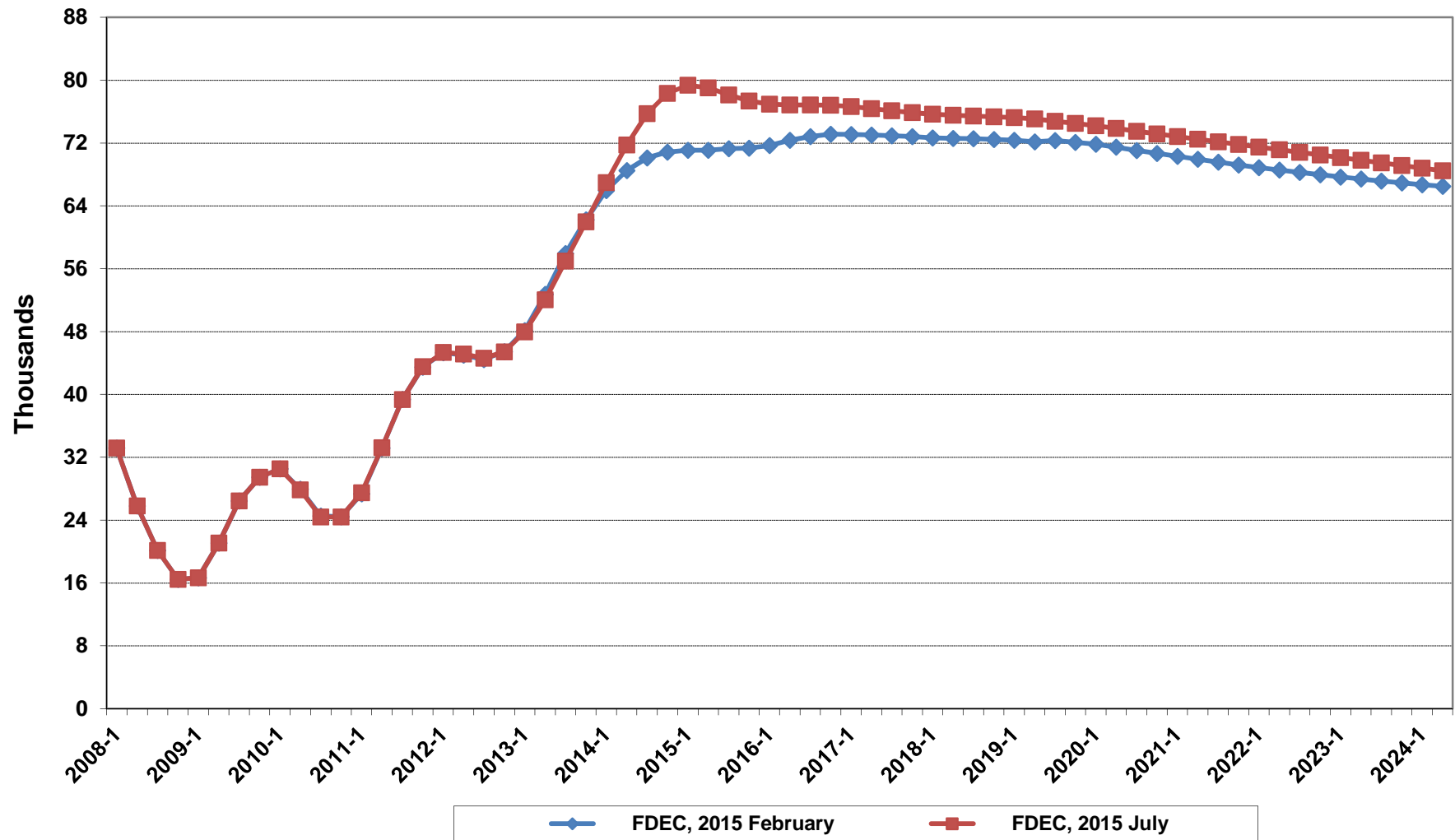
Charts Conference Packet

July 9, 2015

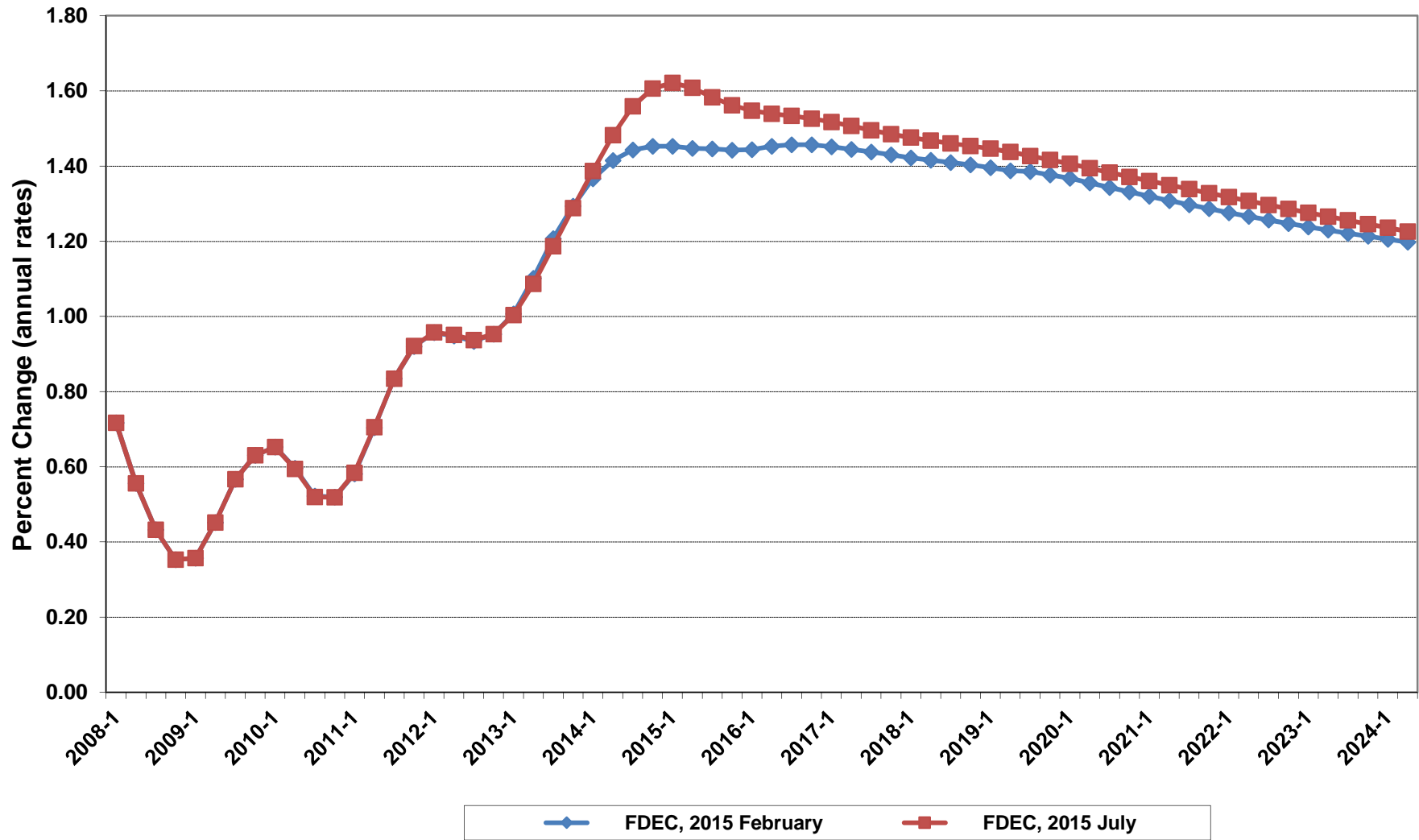
Florida Resident Population



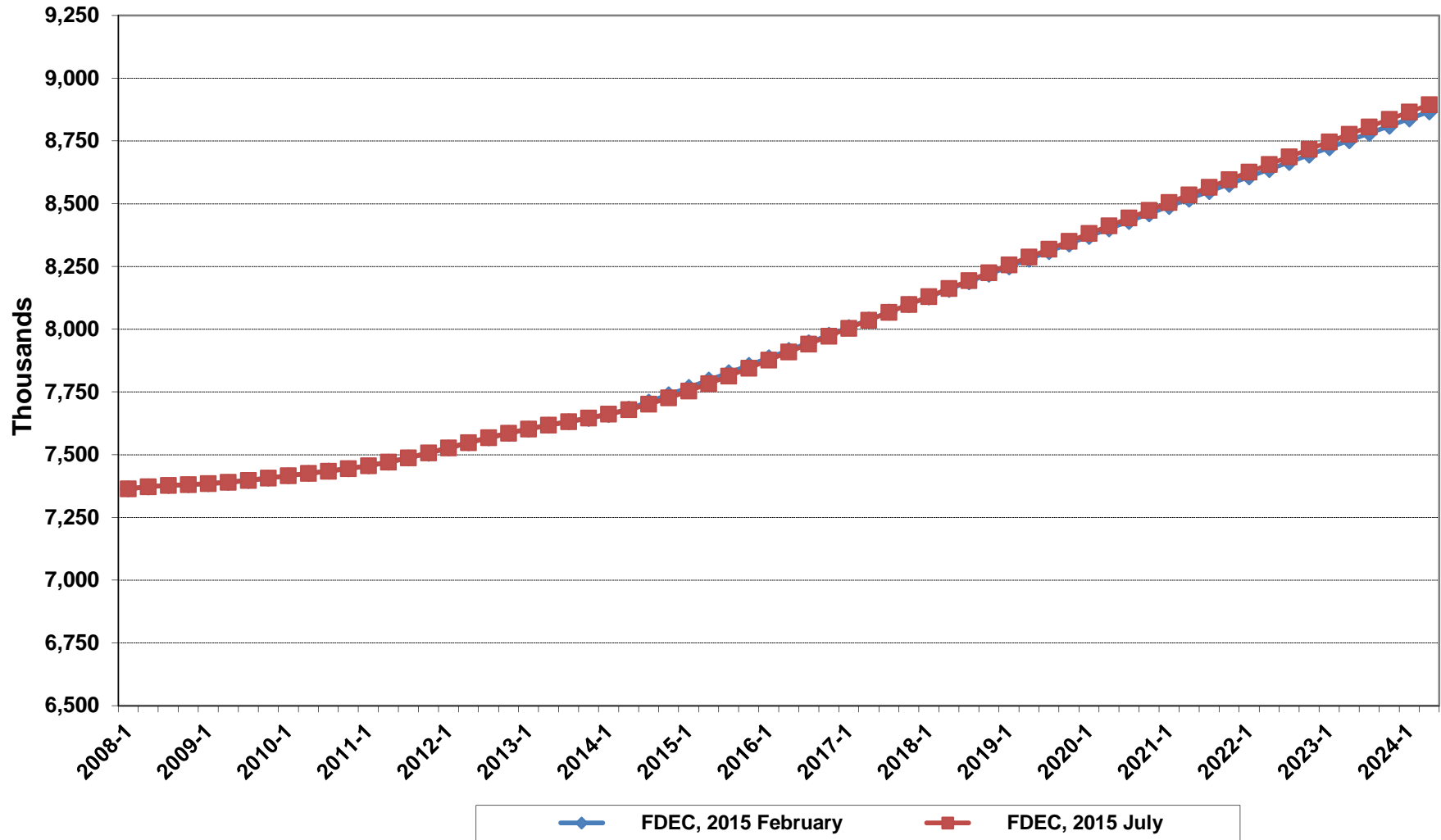
Net Change In Florida Resident Population



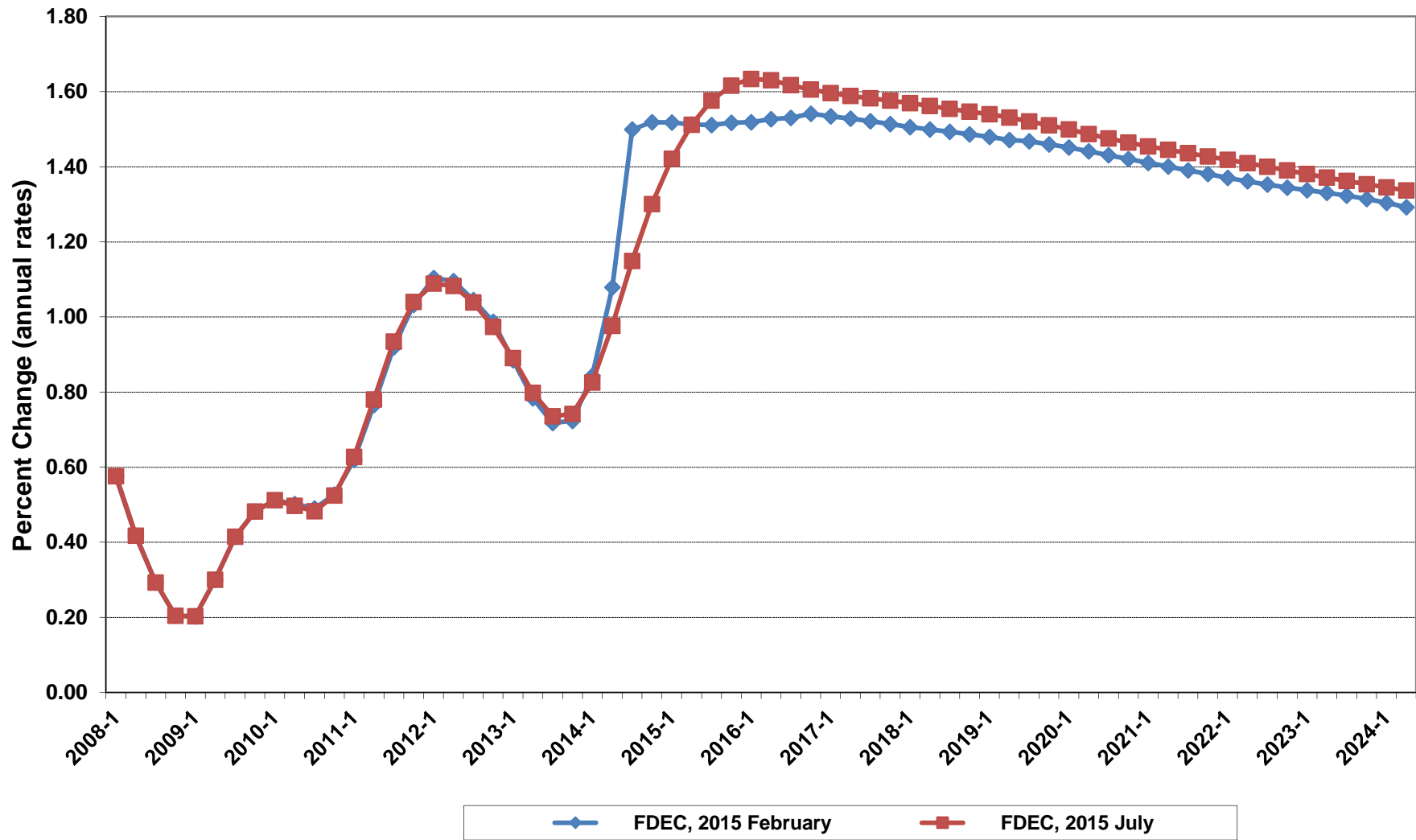
Growth In Florida Resident Population



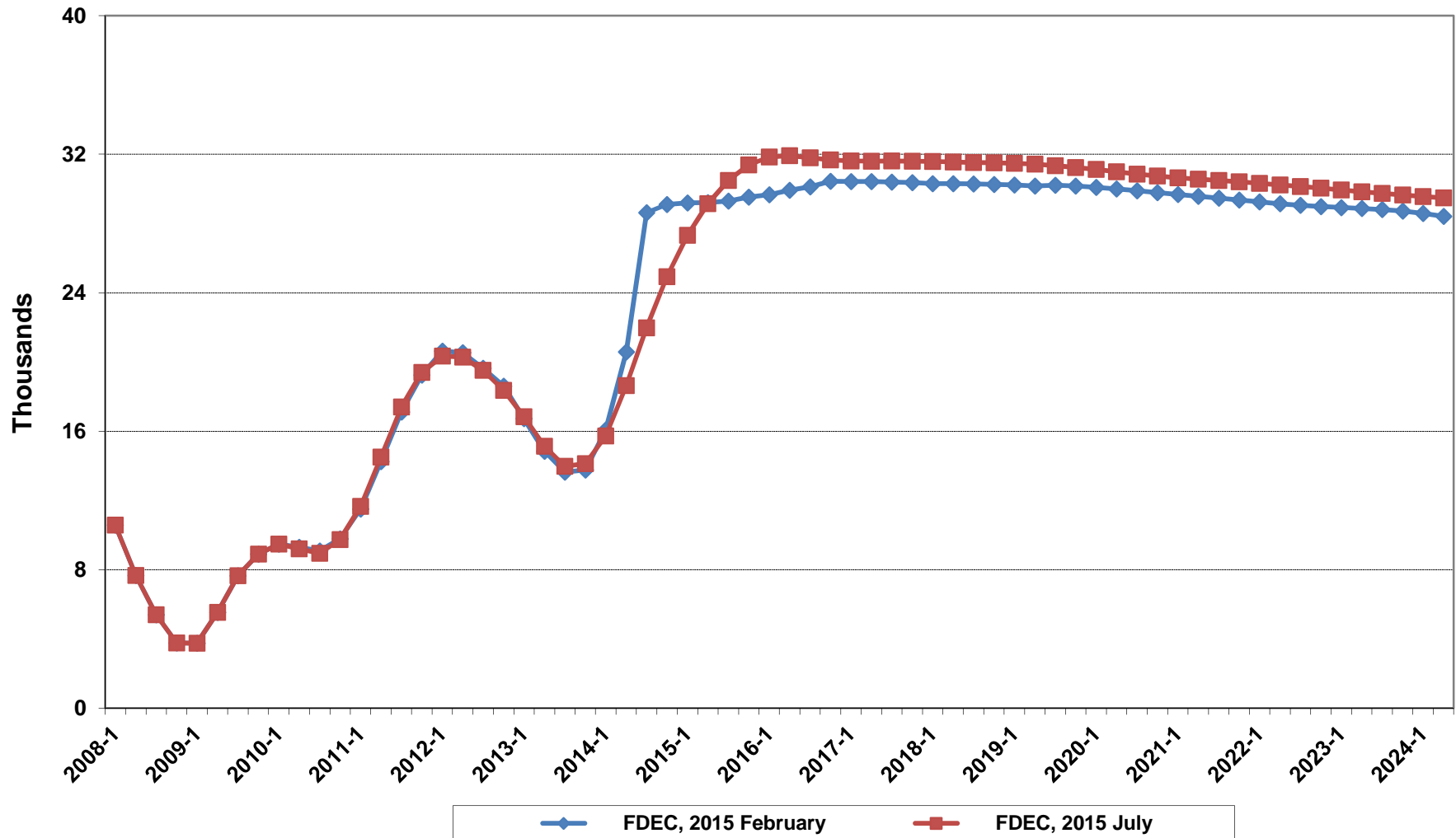
Florida Resident Households



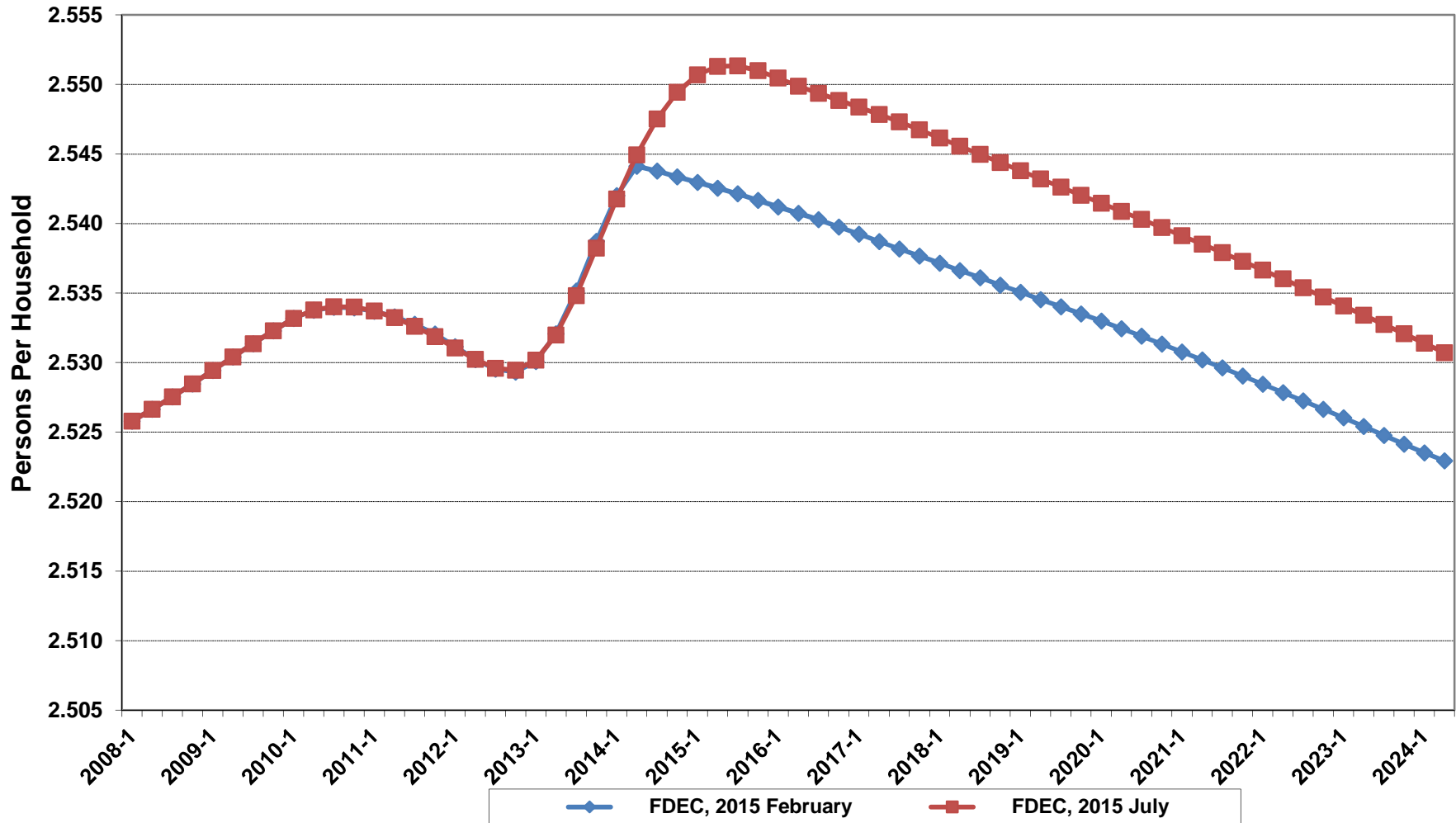
Growth In Florida Resident Households



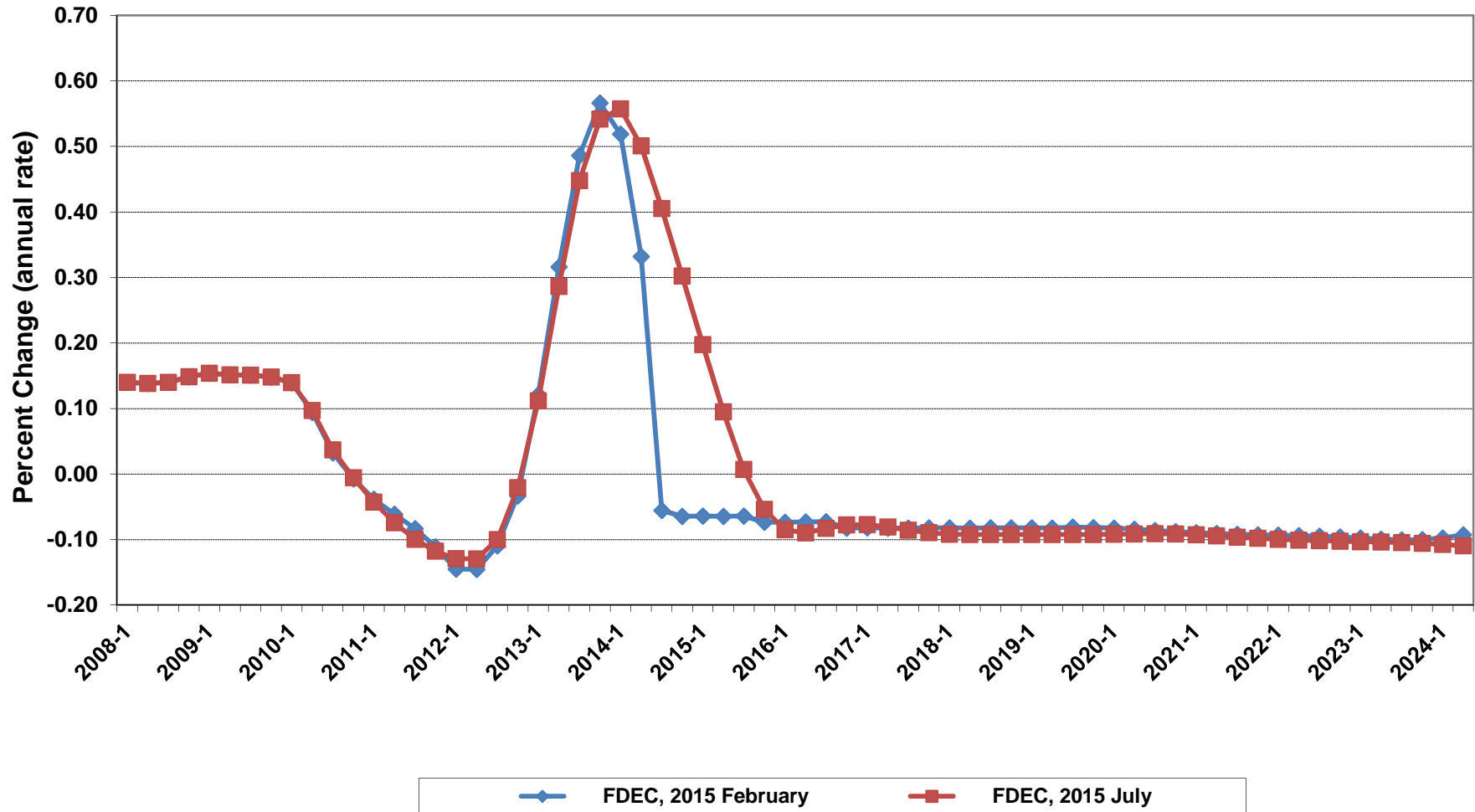
Net Change In Florida Resident Households



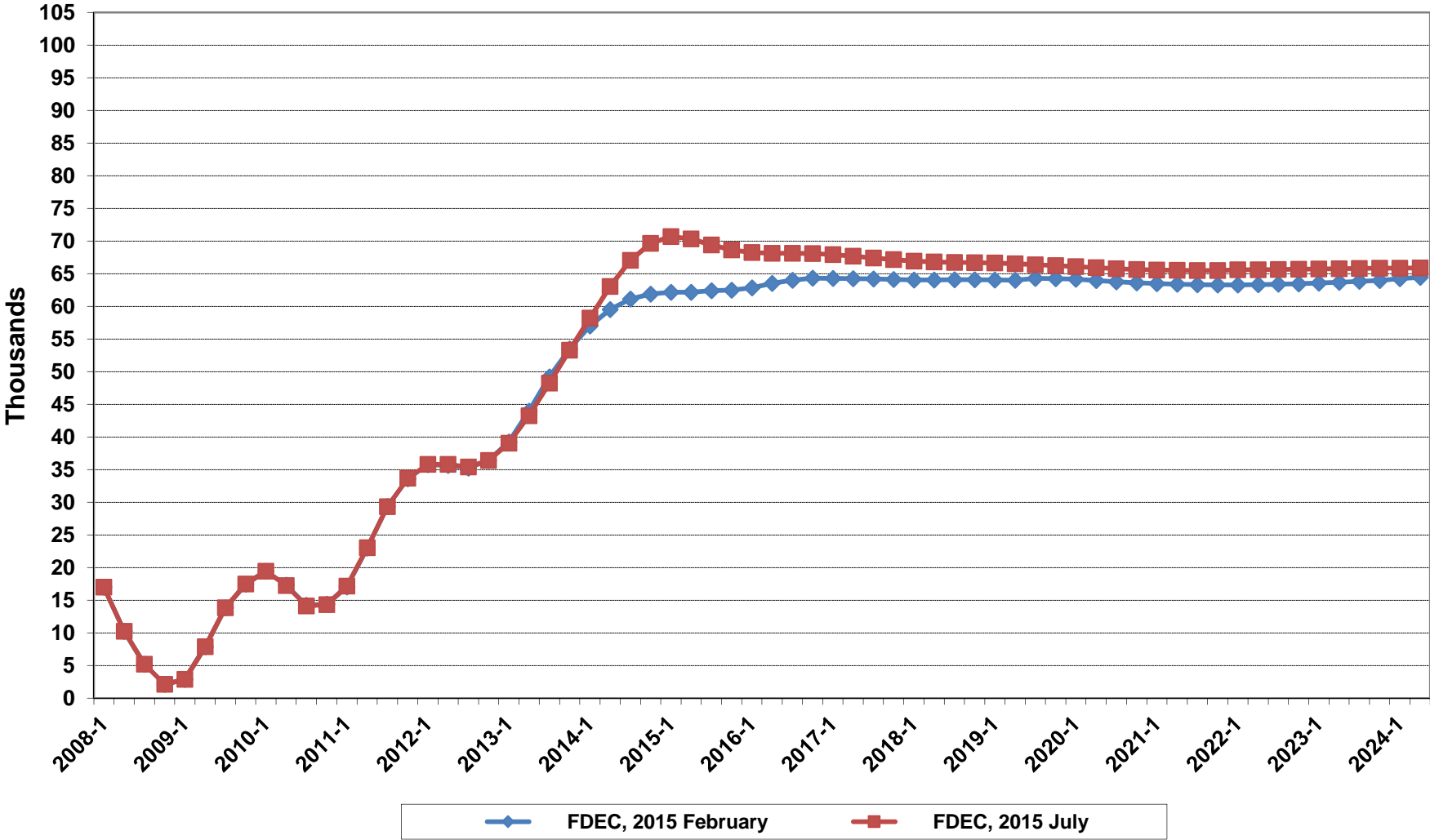
Florida Average Household Size



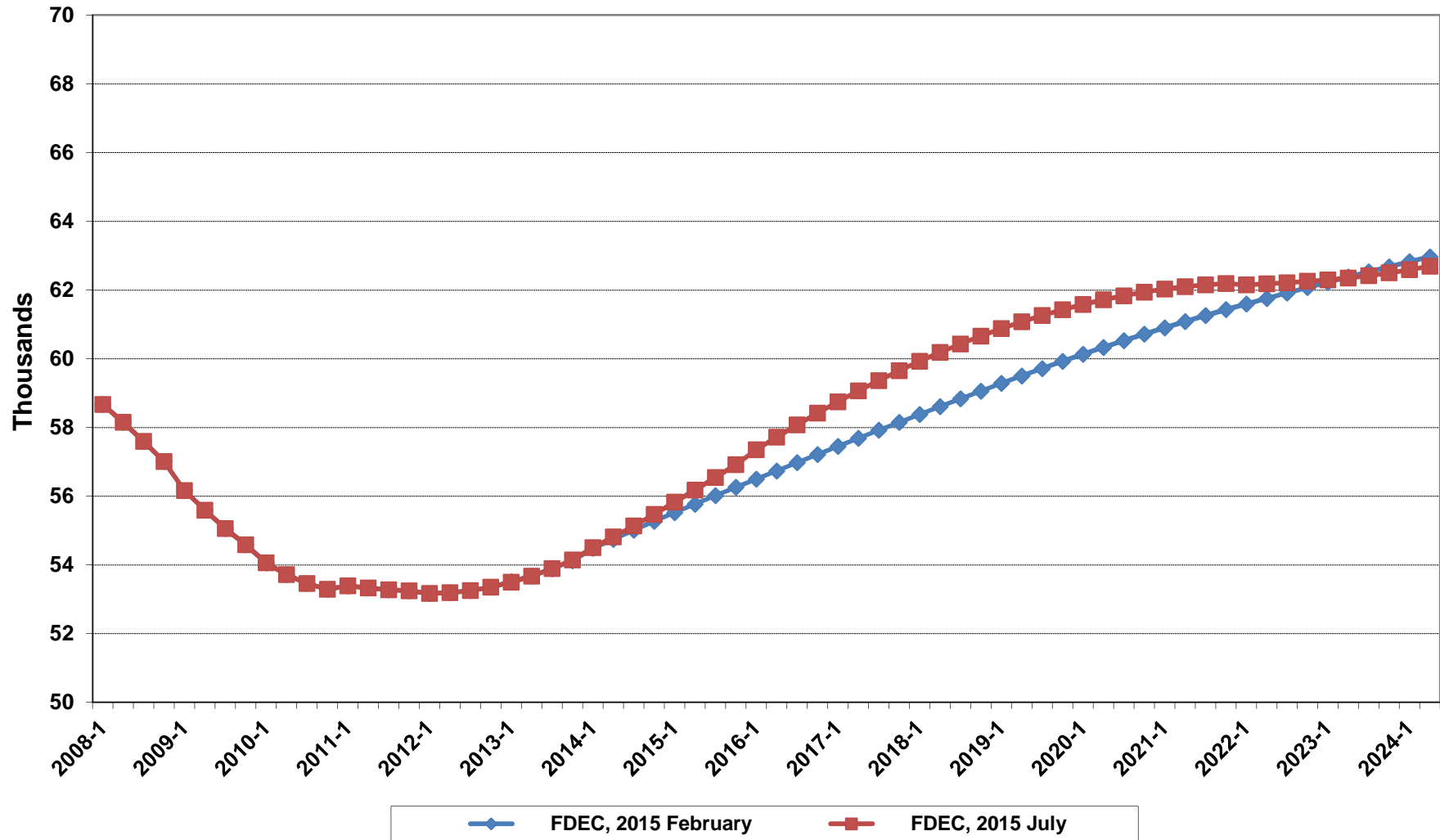
Growth In Florida Household Size



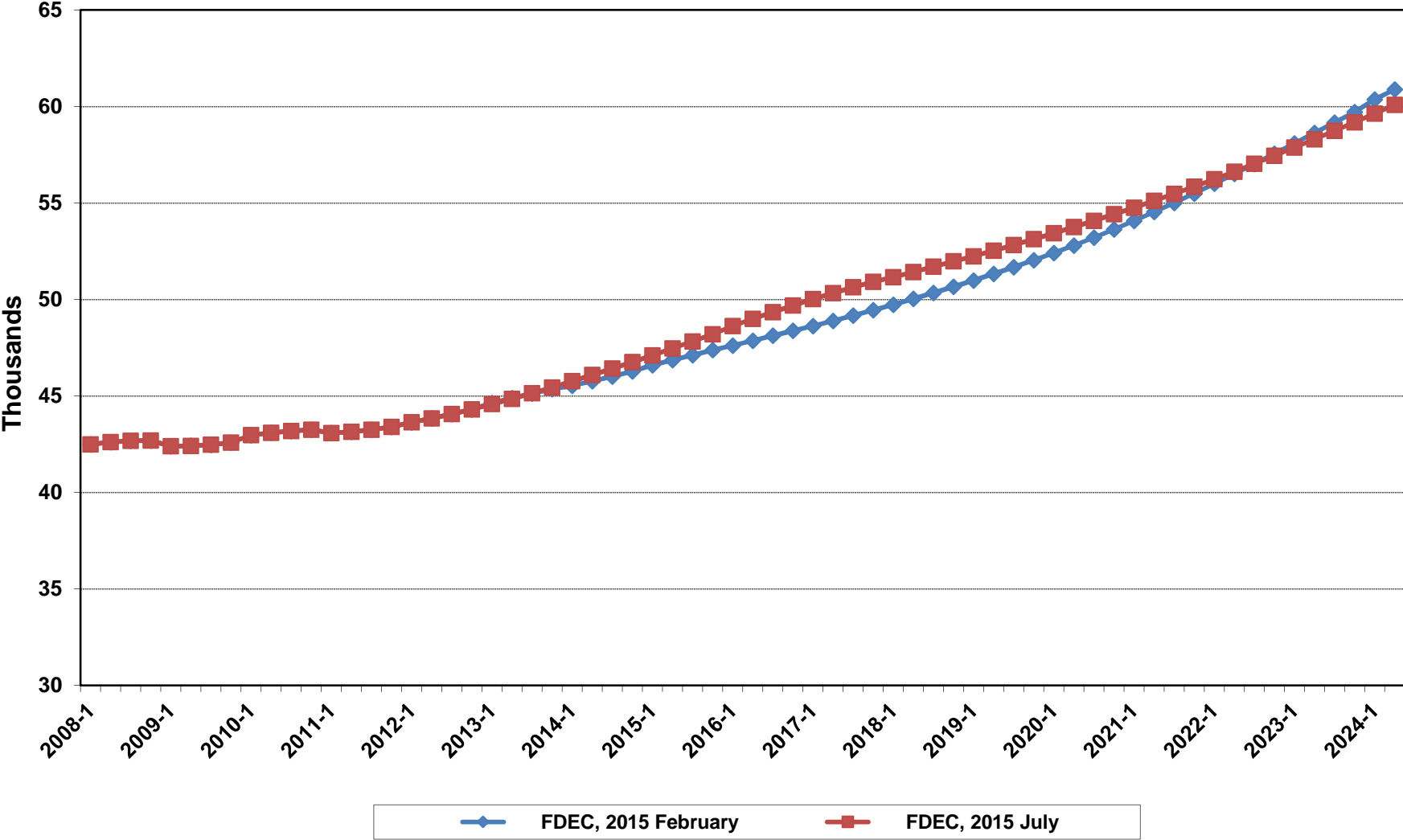
Florida Net Migration



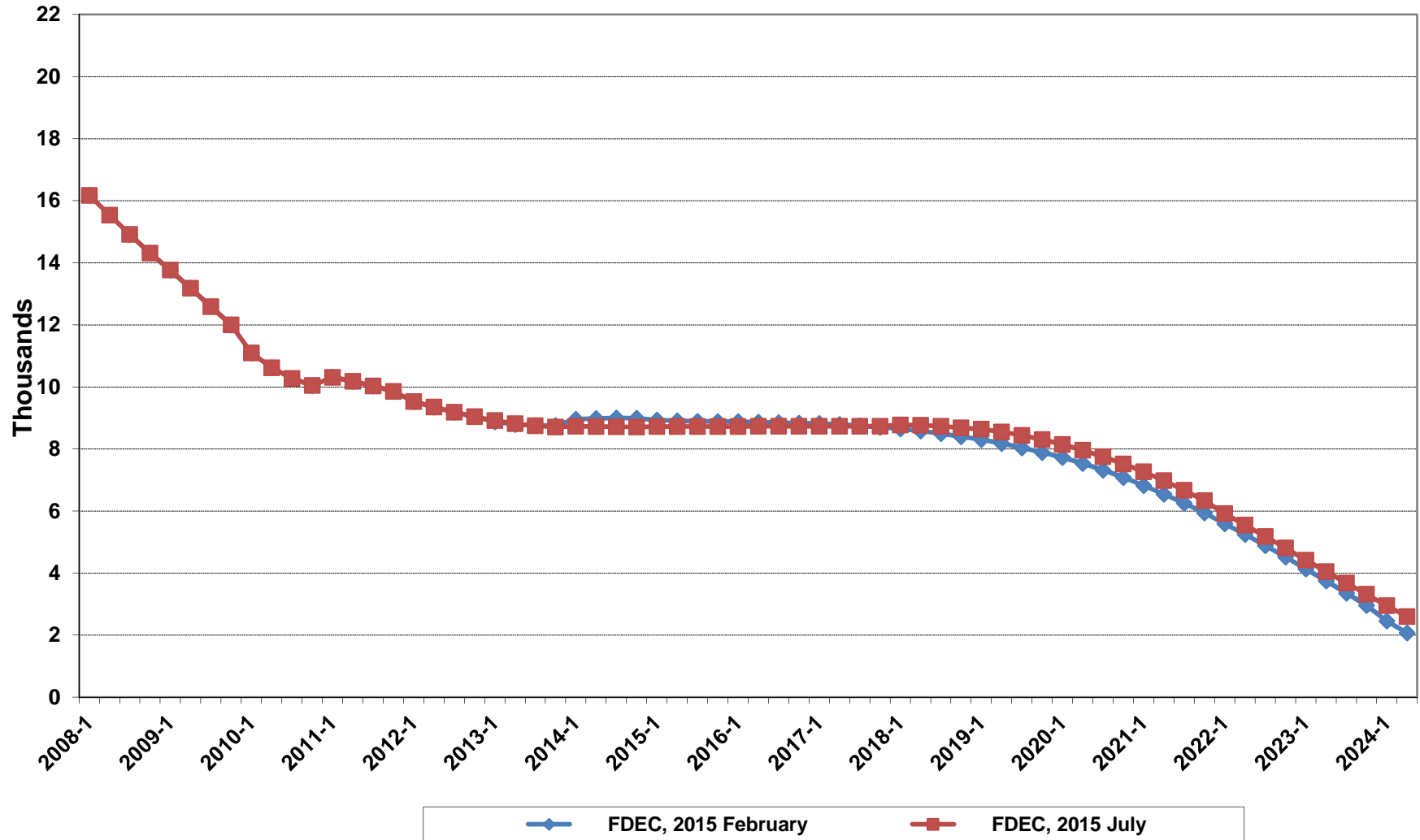
Florida Resident Births



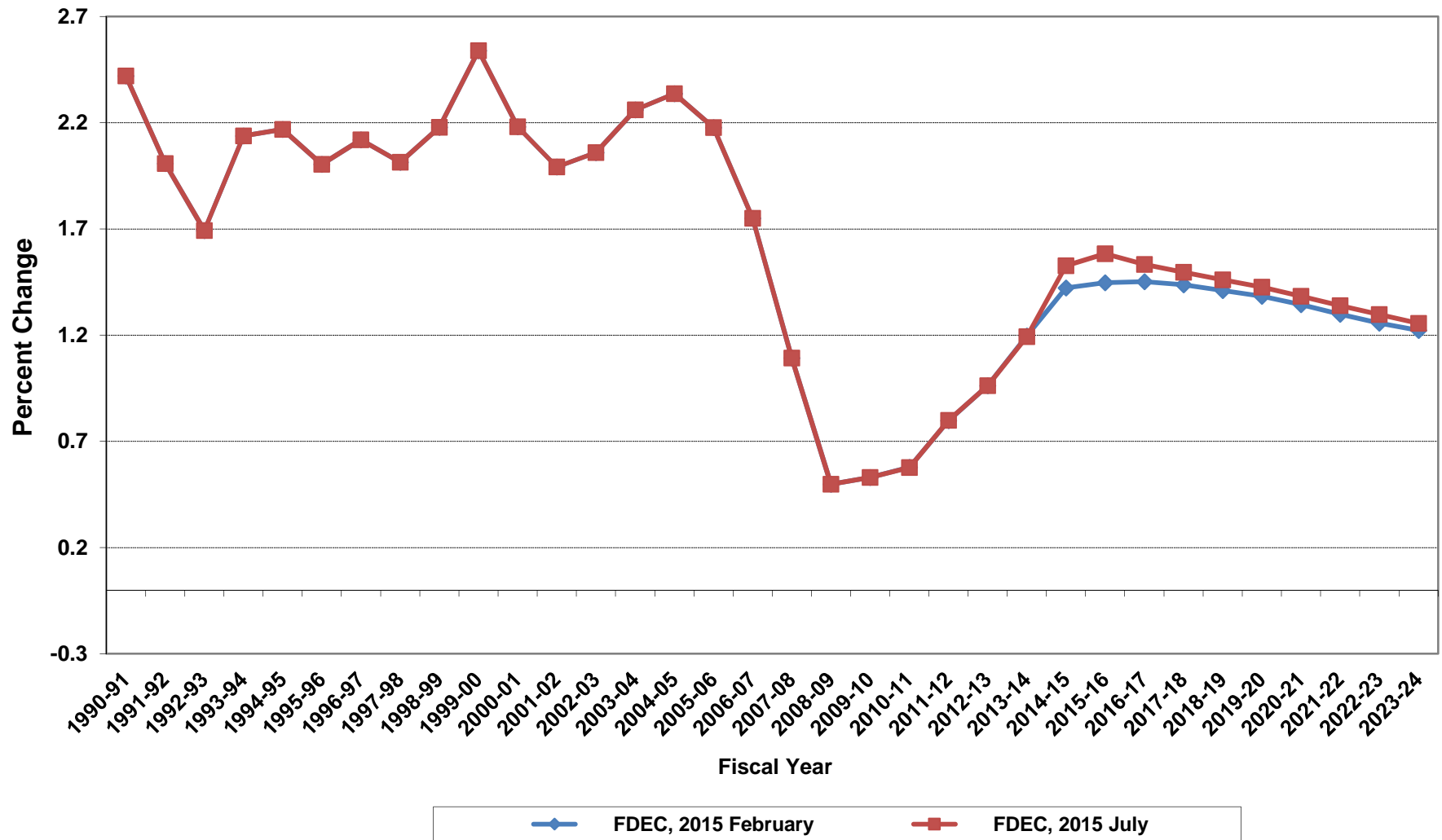
Florida Resident Deaths



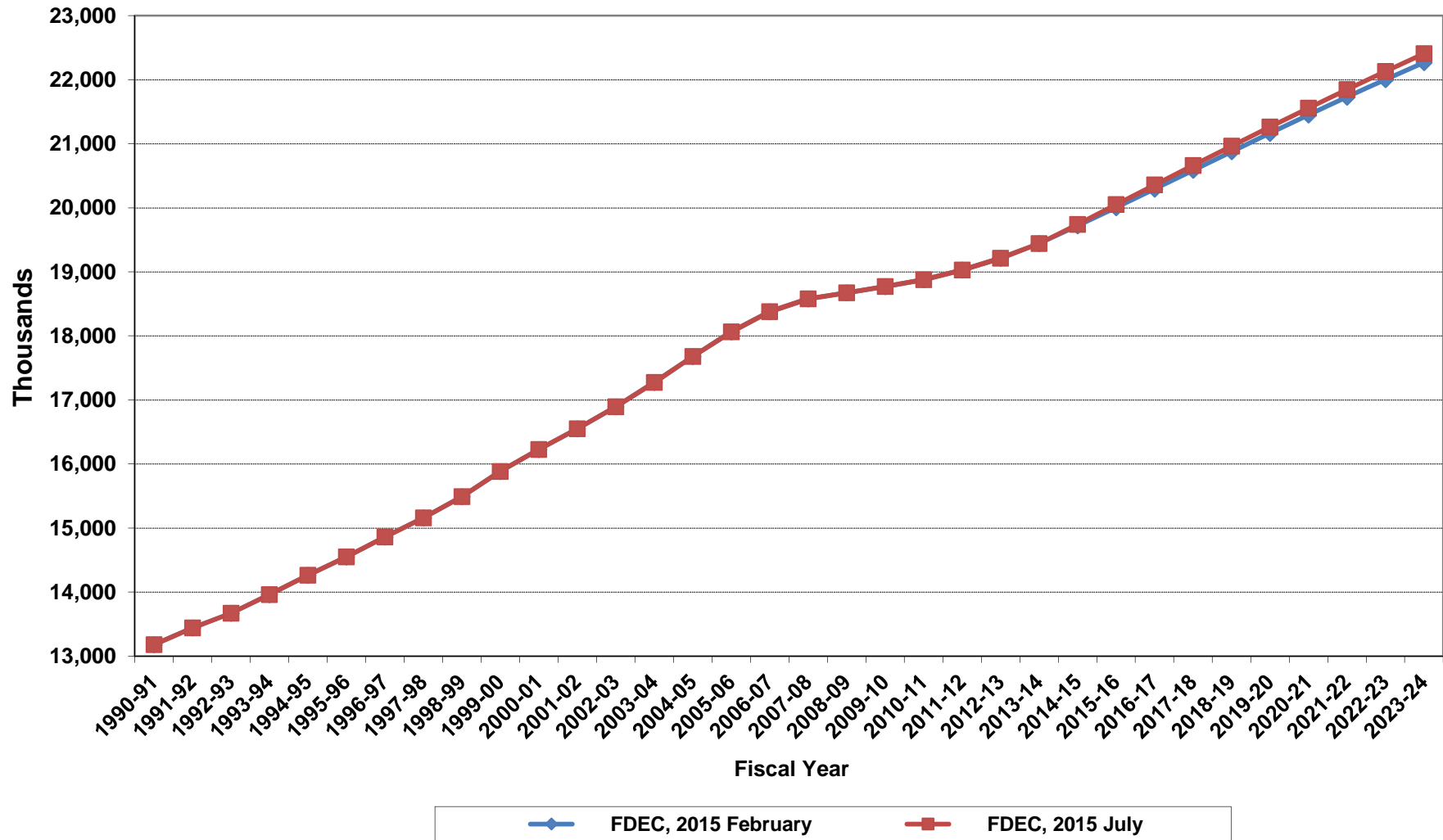
Florida Net Natural Increase



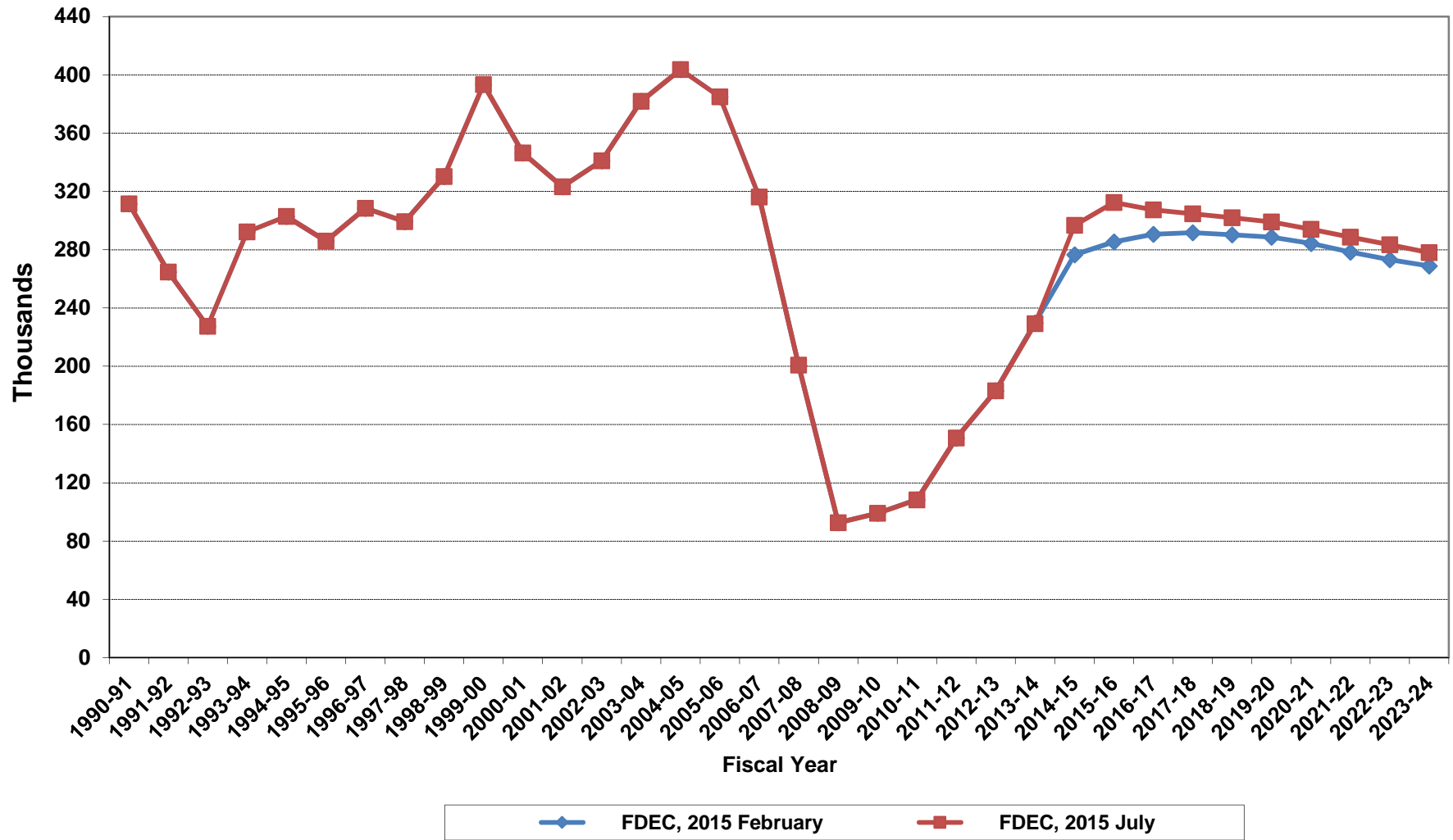
Growth In Florida Resident Population



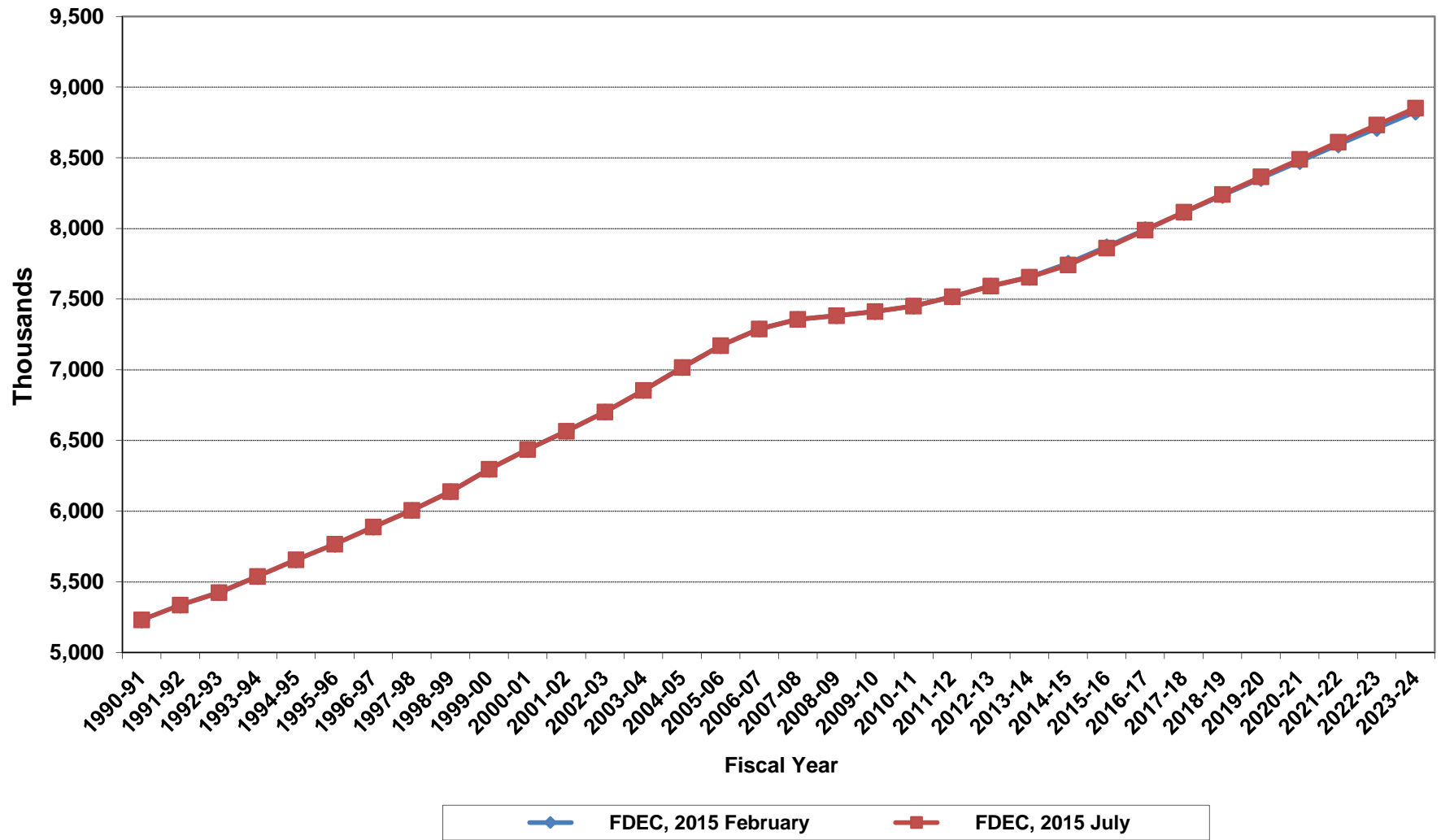
Florida Resident Population



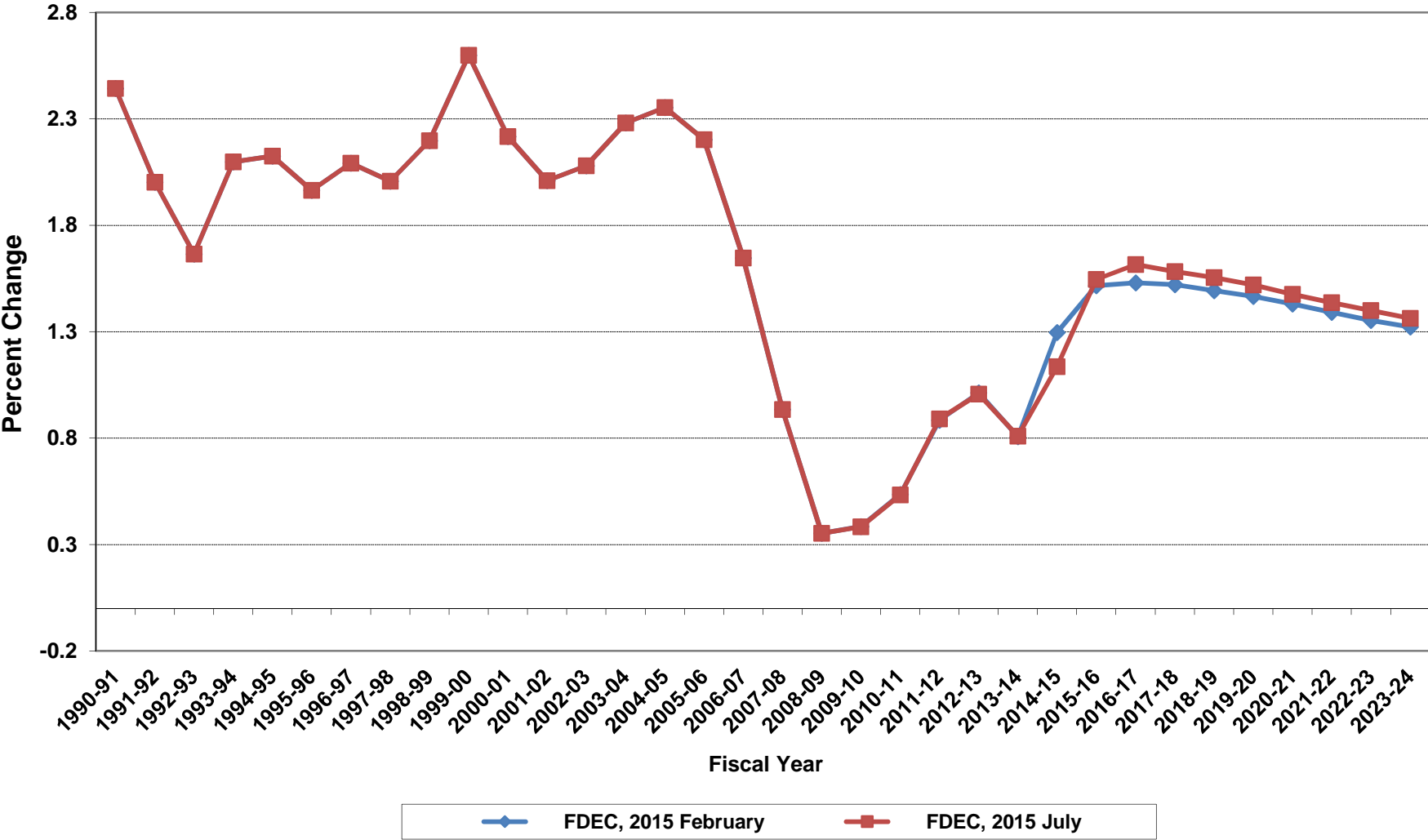
Net Change In Florida Resident Population



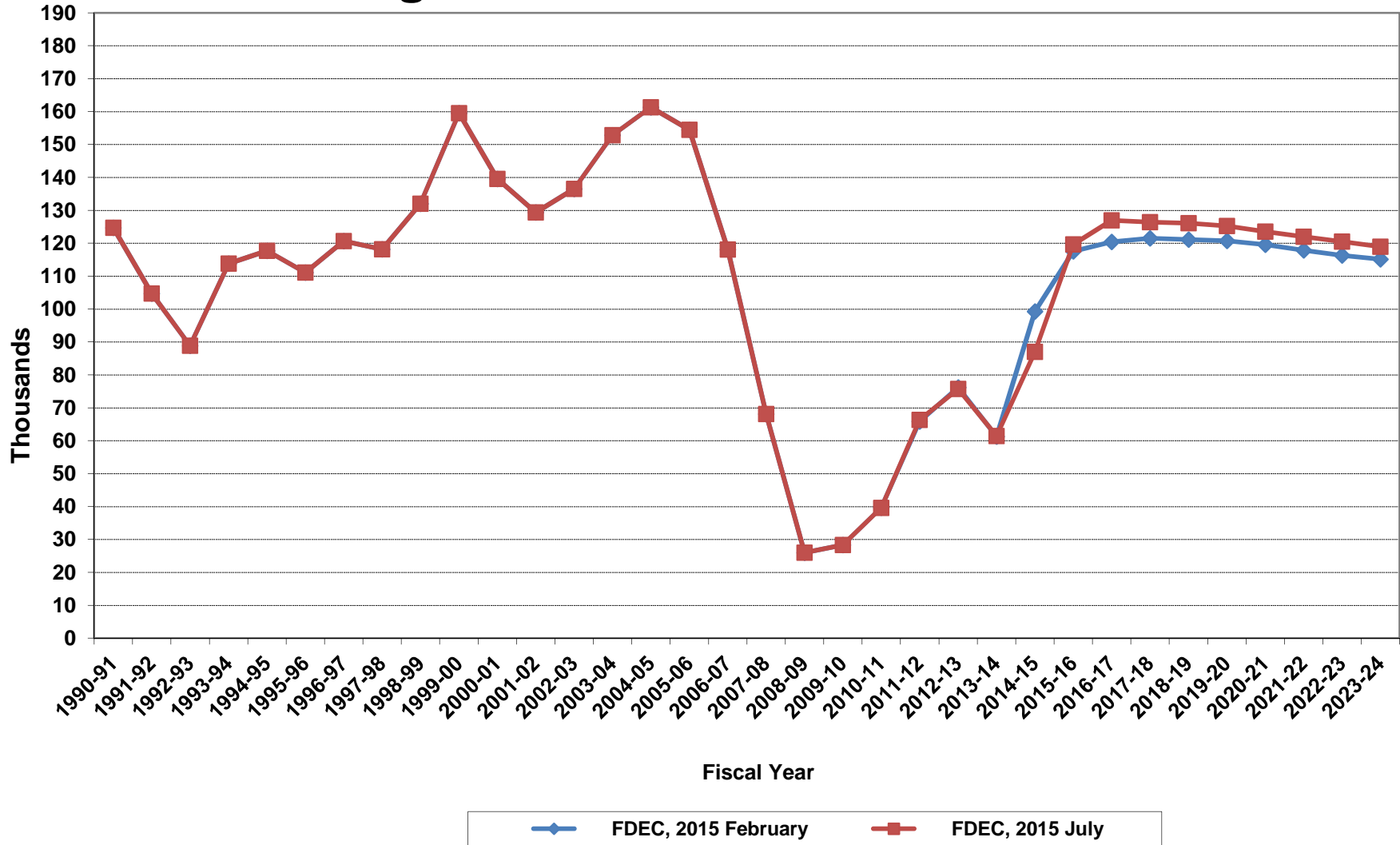
Florida Resident Households



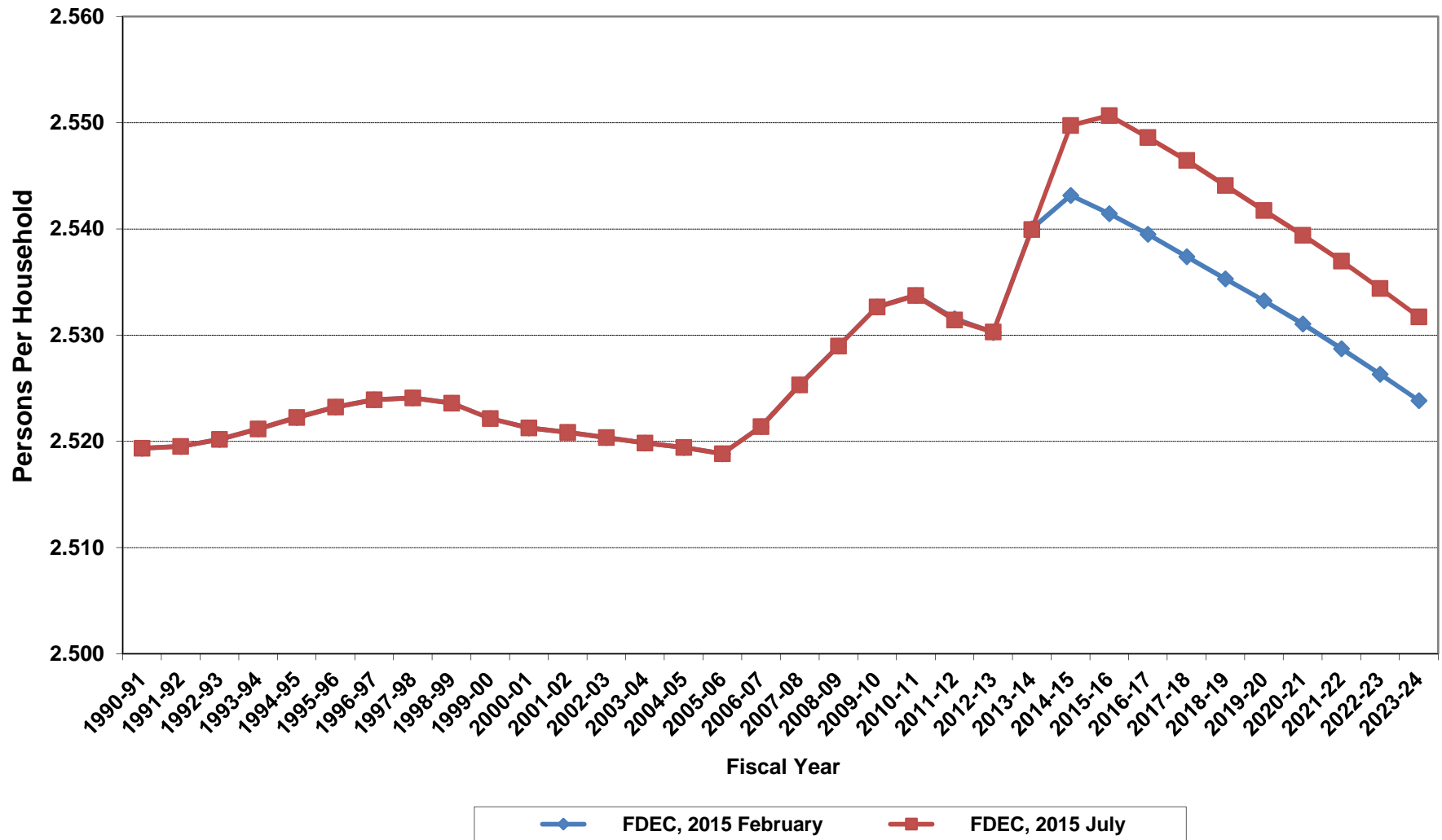
Growth In Florida Resident Households



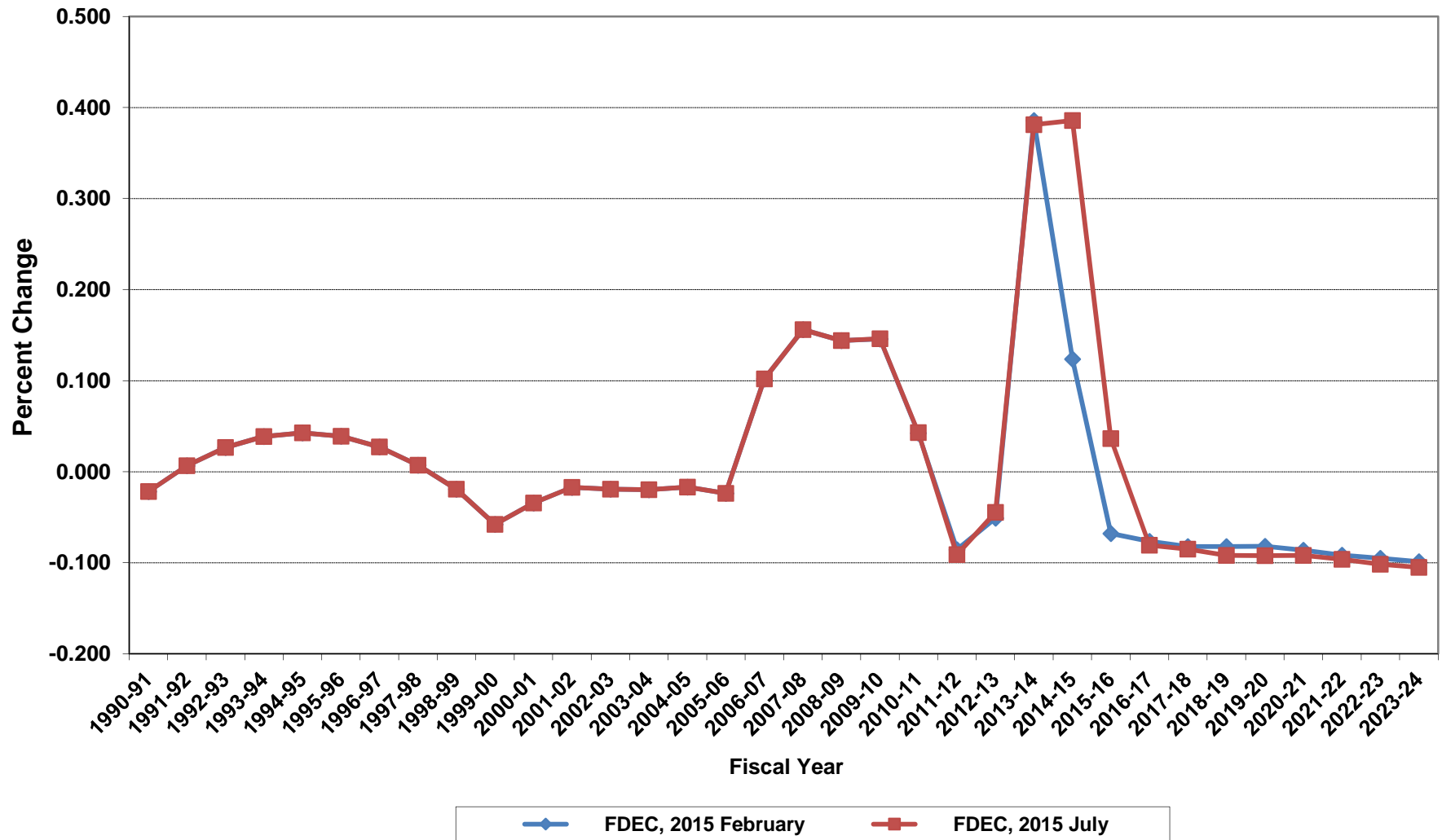
Net Change In Florida Resident Households



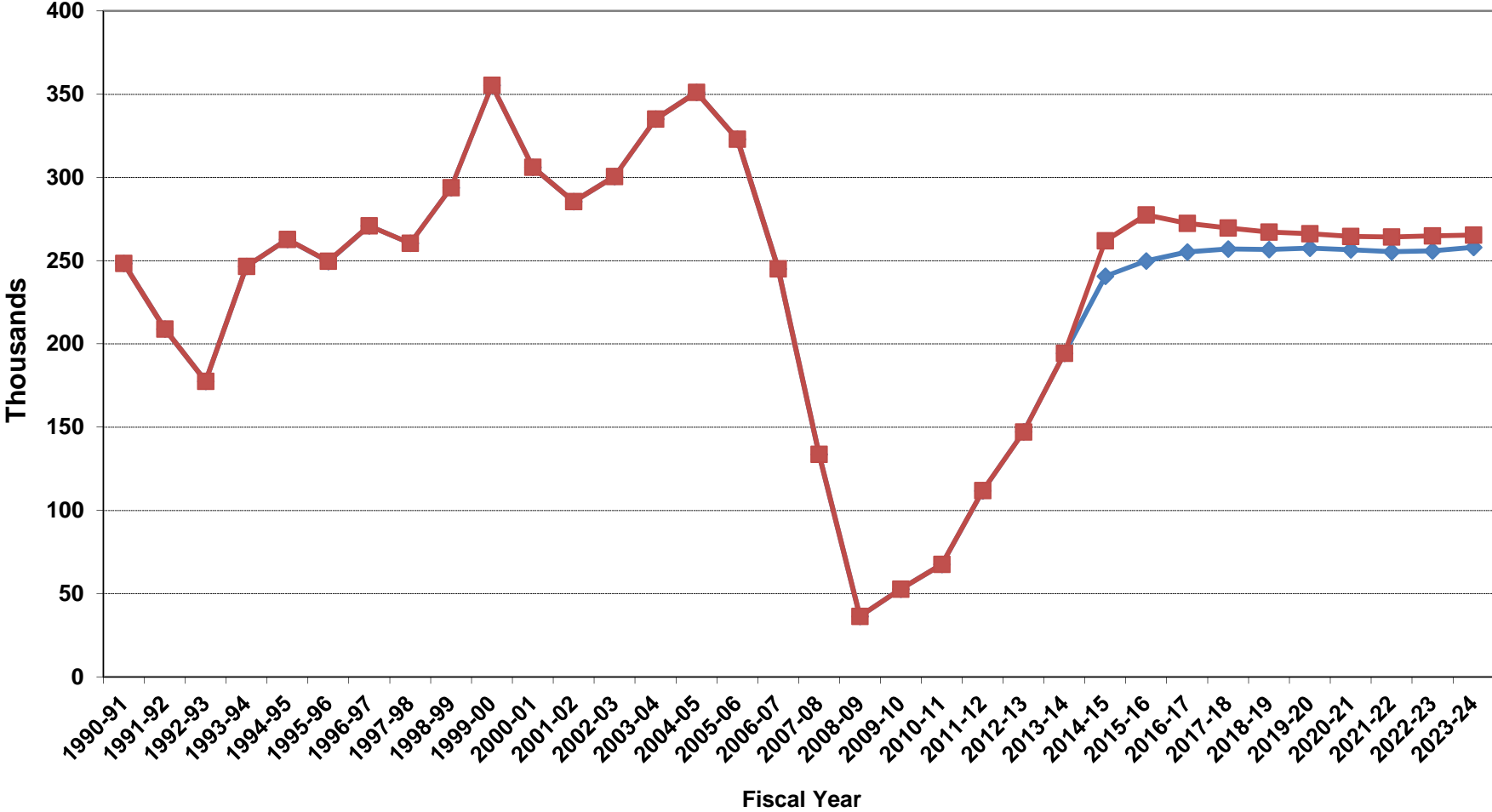
Average Florida Household Size



Growth In Average Florida Household Size

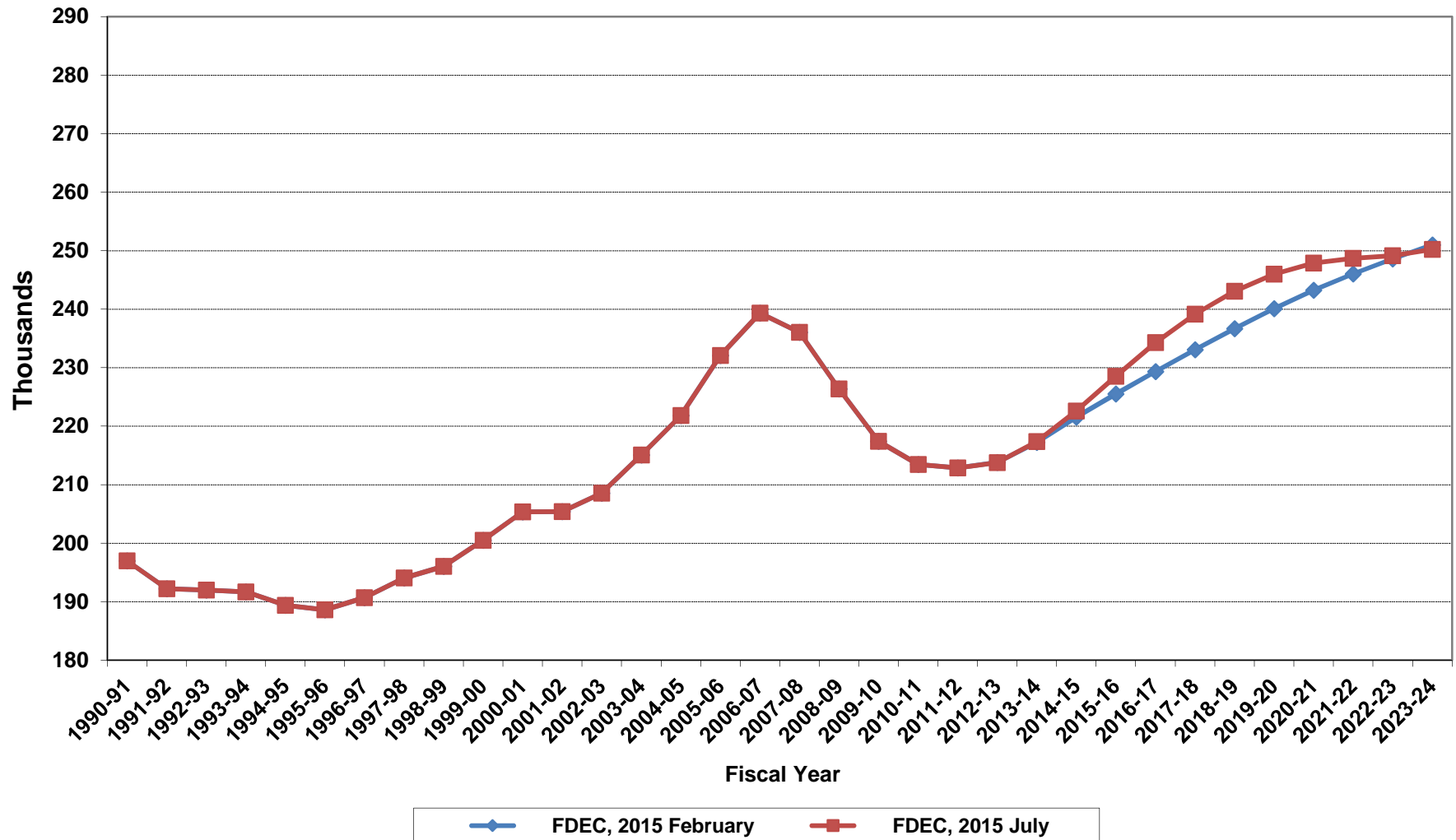


Florida Net Migration

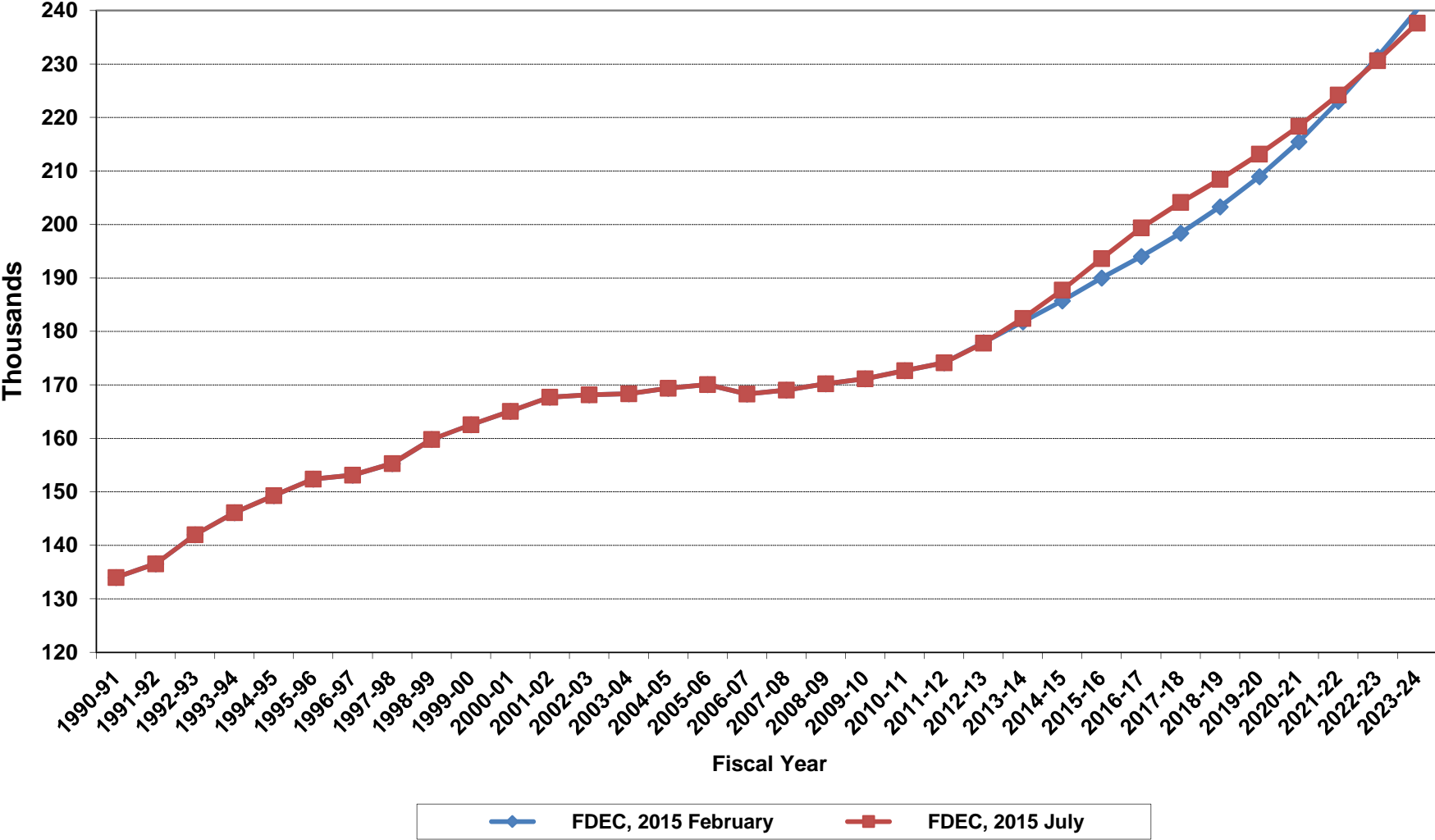


FDEC, 2015 February FDEC, 2015 July

Florida Resident Live Births



Florida Resident Deaths



Florida Net Natural Increase

