



Florida Regulatory Relations
150 S. Monroe St., Suite 400
Tallahassee, FL 32301

T: 850-577-5550
F: 850-224-5073
www.att.com

May 22, 2007

Beth Salak, Director
Competitive Markets and Enforcement
Florida Public Service Commission
Attn: Tariff Section
2540 Shumard Oak Boulevard
Tallahassee, Florida 32399-0850

Dear Mrs. Salak:

Pursuant to Florida Statute 364.051, we are filing herewith revisions to AT&T Florida's General Subscriber Service Tariff. Following are the affected pages:

General Subscriber Service Tariff

Gainesville	Base Rate Area Map	Seventh Revised Page
	Exchange Service Map	Thirteenth Revised Page 1
	Exchange Service Map	Eighth Revised Page 2

This tariff moves a portion of the AT&T Gainesville Exchange to the Windstream Alachua Exchange pursuant to Commission Order No. PSC-07-0342-PAA-TL.

Acknowledgment, date of receipt and authority number of this filing are requested.

Your consideration will be appreciated.

Yours very truly,

Jerry D. Hendrix (slg)

Regulatory Vice President
Attachments

EXECUTIVE SUMMARY

Introduction:

AT&T Florida is moving a portion of its Gainesville Exchange to Windstream's Alachua Exchange pursuant to Commission Order No. PSC-07-0342-PAA-TL. This move will allow customers in the impacted areas to receive DSL from Windstream.

SOUTHERN BELL TELEPHONE
AND TELEGRAPH COMPANY

Bellsouth Telecommunications, Inc
Florida

GAINESVILLE, FLA. Exchange

Seventh Sixth Revised Sheet Page
Cancelling Fifth Revised Sheet page
Sixth

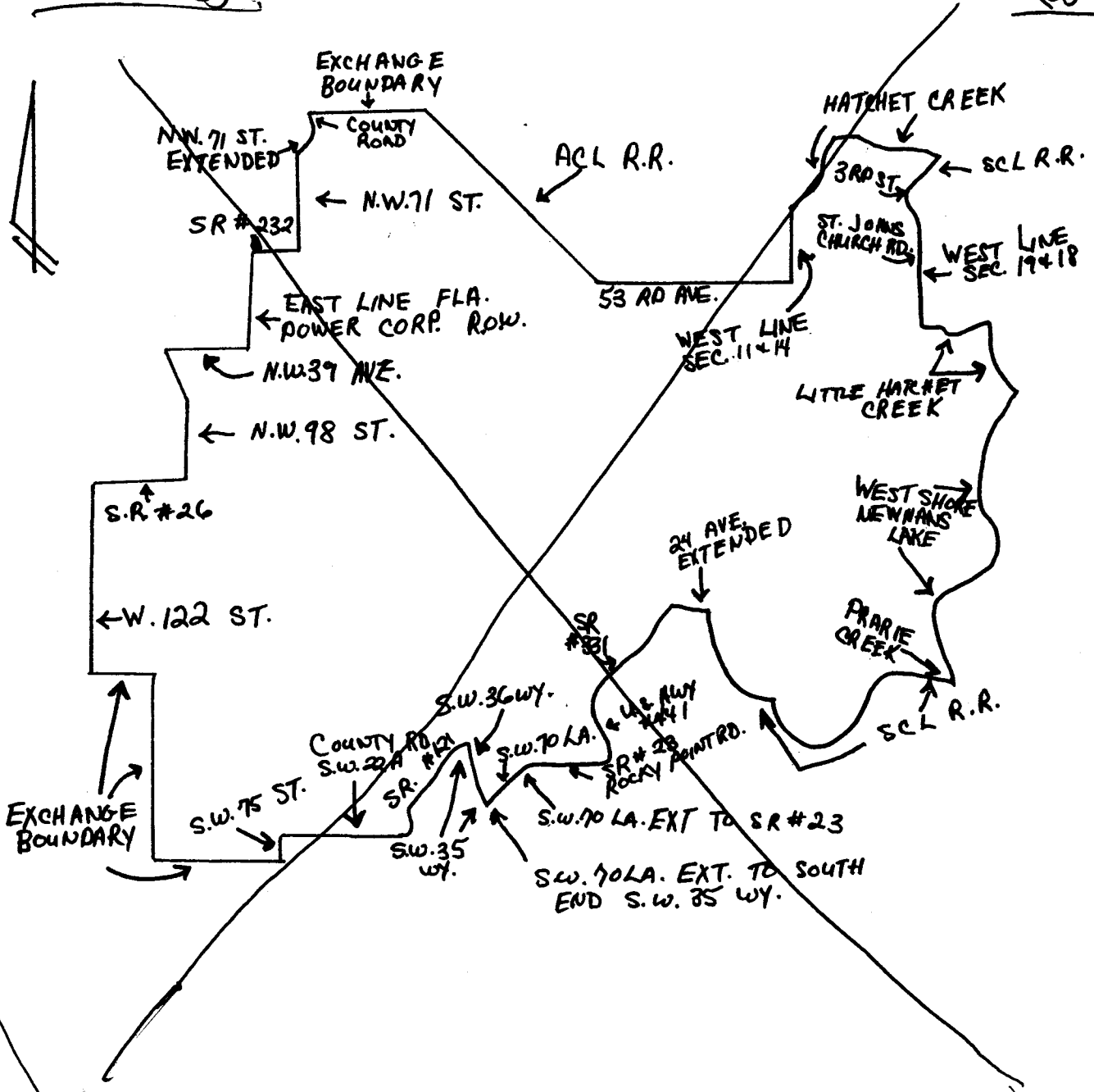
Gainesville Exchange
BASE RATE AREA MAP

ISSUED: ~~January 29, 1979~~ May 22, 2007

EFFECTIVE: ~~February 28, 1979~~ May 23, 2007

~~(C Deleted)~~

(D)



BY: ~~J. W. Sessoms, Vice President, Miami, Florida~~

Marshall M. Criser III

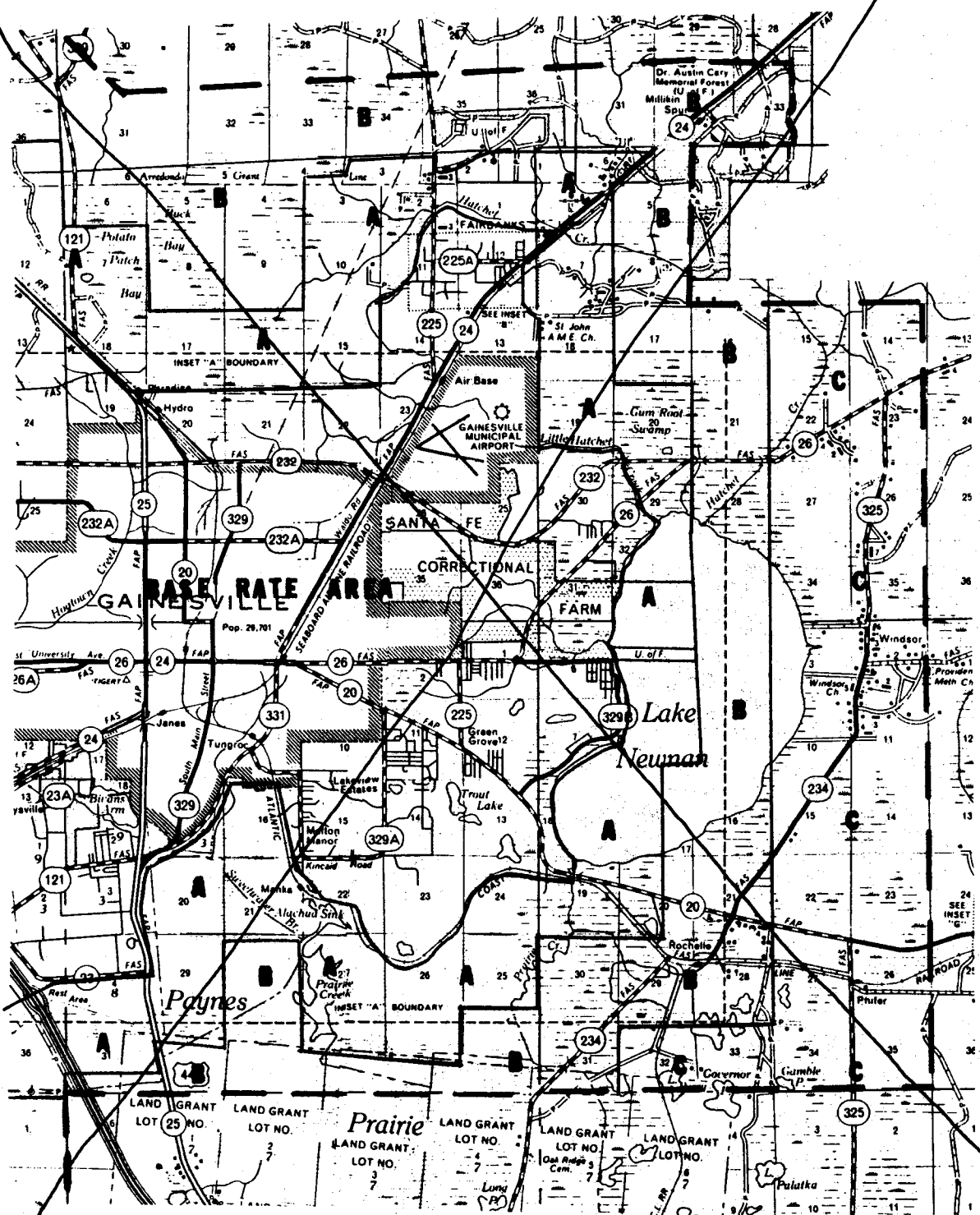
ISSUED: May 22, 2007
~~January 29, 1979~~

EFFECTIVE: ~~February 28, 1979~~

Gainesville EXCHANGE SERVICE AREA MAP

May 23, 2007

INSERT 1



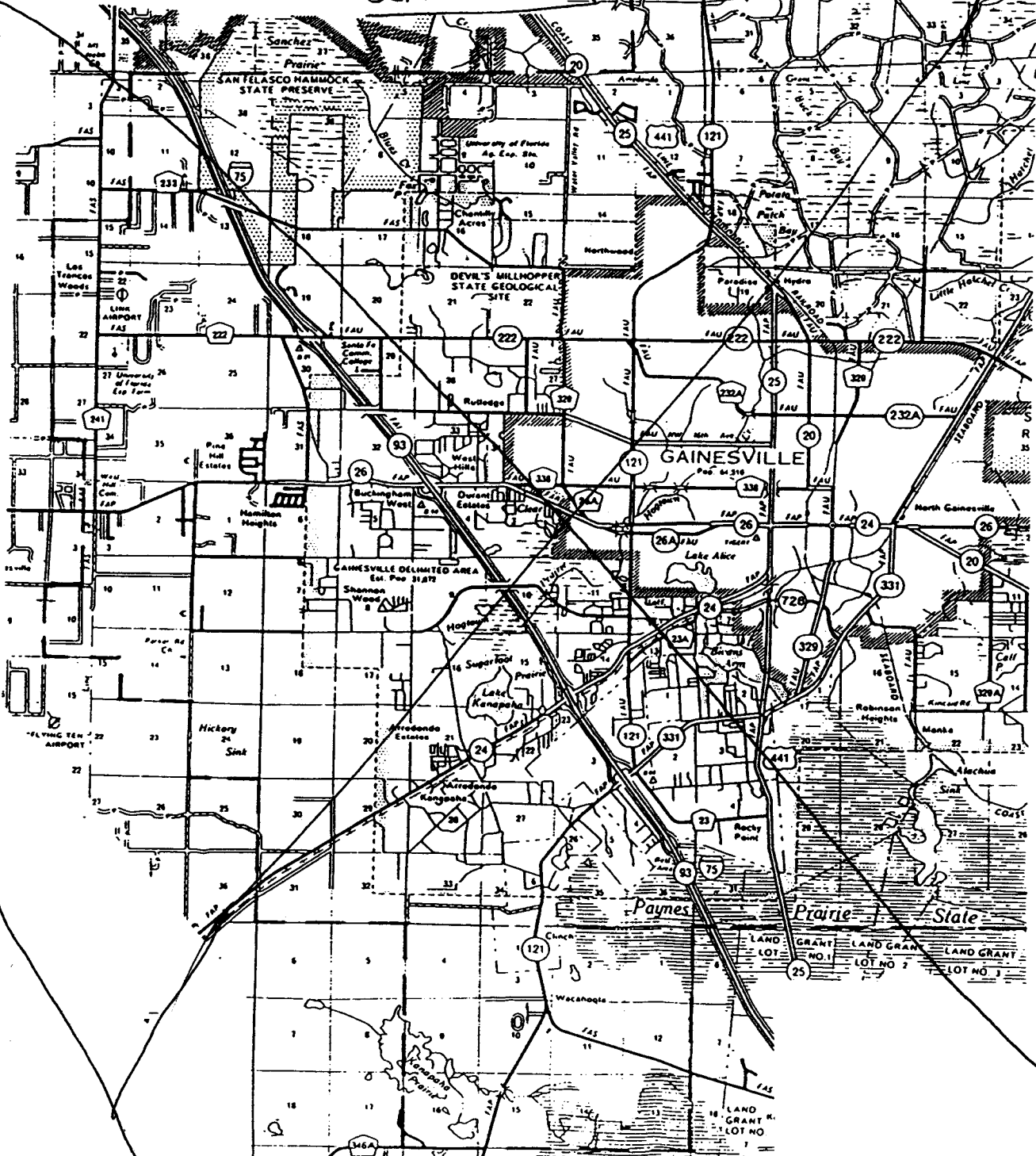
BY: ~~W. W. Sessoms, Vice President, Miami, Florida~~
Marshall M. Criser III

BELLSOUTH
TELECOMMUNICATIONS, INC. *
FLORIDA

ISSUED: ~~June 26, 1992~~ May 23, 2007

Exchange
GAINESVILLE, FL
~~Seventh Revised Sheet 2~~
~~Cancelling Sixth Revised Sheet 2~~
~~Seventh~~
EFFECTIVE: ~~August 25, 1992~~
May 23, 2007

~~EXCHANGE SERVICE AREA MAP~~
~~WESTERN PART~~
Gainesville Exchange
Service Map



Marshall M. Crisen III
BY: J. P. Lacher, Vice-President - Florida

~~Registered Service Mark of BellSouth Corporation~~
~~*d/b/a SOUTHERN BELL TELEPHONE AND TELEGRAPH COMPANY~~

BELLSOUTH
TELECOMMUNICATIONS, INC.
FLORIDA
ISSUED: May 22, 2007
BY: Marshall M. Criser III, President – FL
Miami, Florida

GAINESVILLE EXCHANGE
Seventh Revised Page
Cancels Sixth Revised Page

EFFECTIVE: May 23, 2007

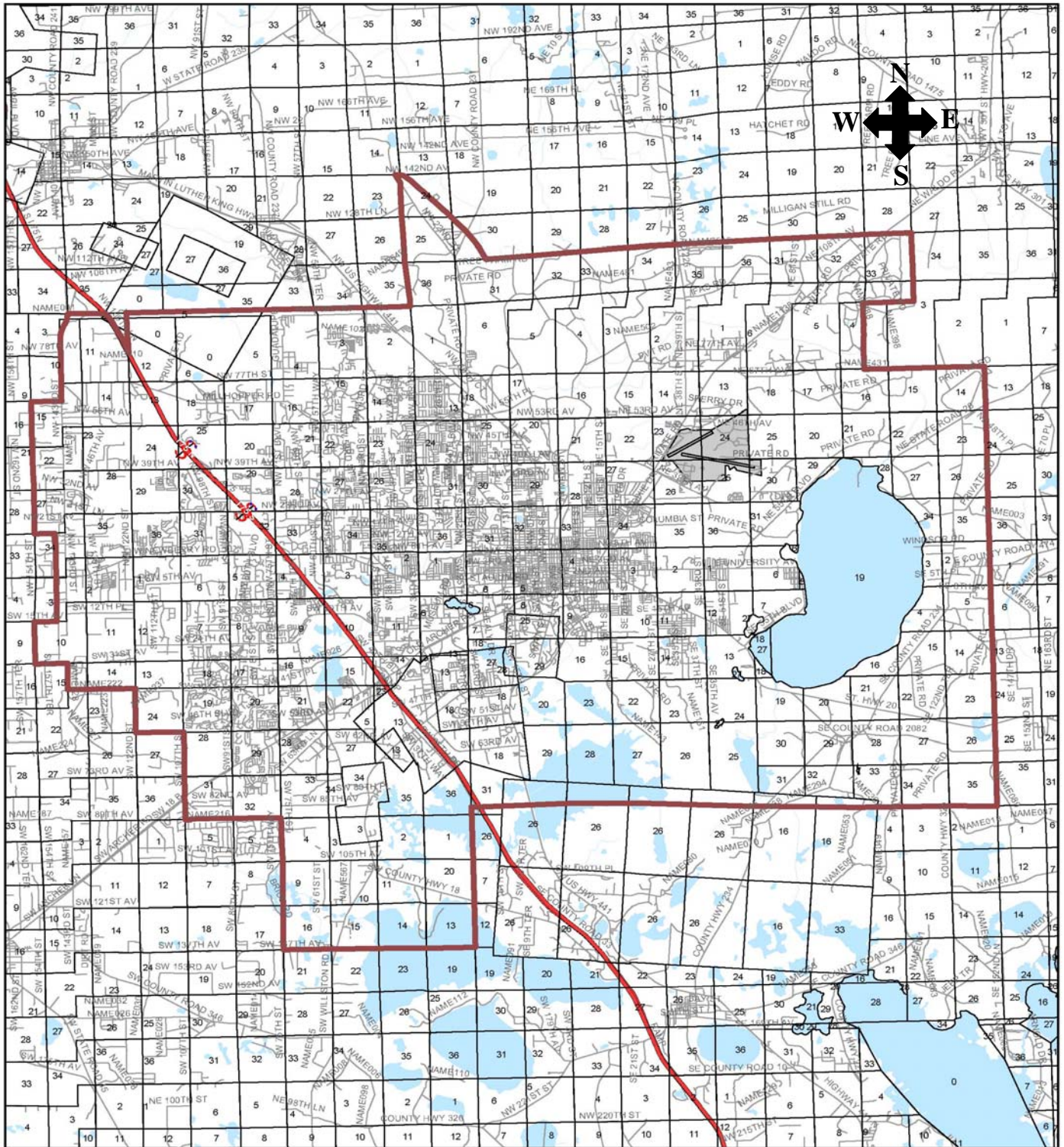
Gainesville Exchange Base Rate Area Map

(Deleted)

(D)

EFFECTIVE: May 23, 2007

Gainesville Exchange Service Map



All BellSouth marks contained herein and as set forth in the trademarks and service marks section of this Tariff are owned by BellSouth Intellectual Property Corporation.

BELLSOUTH
TELECOMMUNICATIONS, INC.
FLORIDA
ISSUED: May 22, 2007
BY: Marshall M. Criser III, President – FL
Miami, Florida

GAINESVILLE EXCHANGE
Eighth Revised Page 2
Cancels Seventh Revised Page 2

EFFECTIVE: May 23, 2007

Gainesville Exchange Service Map

(Deleted)

(D)