

**Ruth Nettles**

---

**From:** Jack Leon [Jack\_Leon@fpl.com]  
**Sent:** Thursday, June 26, 2008 5:18 PM  
**To:** Filings@psc.state.fl.us  
**Cc:** Wade\_Litchfield@fpl.com; Bryan.Anderson@fpl.com; Jessica.Cano@fpl.com; Martha Brown  
**Subject:** Electronic Filing for Docket Nos. 080203-EI, 080245-EI & 080246-EI / FPL's Late Filed Hearing Exhibit No. 99  
**Attachments:** FPL's Transmittal Letter & Late Filed Hearing Ex No. 99.pdf

**Electronic Filing**

**a. Person responsible for this electronic filing:**

Joaquin E. Leon, Esq.  
9250 W. Flagler St., Suite 6514  
Miami, FL 33174  
(305) 552-3922  
jack\_leon@fpl.com

**b. Docket Nos. 080203-EI, 080245-EI & 080246-EI**

In re: Florida Power & Light Company's  
Petition to Determine Need for West County  
Energy Center Unit 3 Electrical Power Plant

In re: Florida Power & Light Company's  
Petition to Determine Need for Conversion of Riviera Plant

In re: Florida Power & Light Company's  
Petition to Determine Need for Conversion of Cape Canaveral Plant

**c. Documents are being filed on behalf of Florida Power & Light Company.**

**d. There are a total of 2 pages in the attached document.**

**e. The document attached for electronic filing is Florida Power & Light Company's Late Filed Hearing Exhibit No. 99.**

*(See attached file: FPL's Transmittal Letter & Late Filed Hearing Ex No. 99.pdf)*

Thank you for your attention and cooperation to this request.

Jack Leon  
Senior Attorney  
Florida Power & Light Company  
9250 W. Flagler Street, Suite 6514  
Miami, Florida 33174  
(305) 552-3922  
Fax: (305) 552-4911  
Cell: (305) 439-1661  
6/27/2008

DOCUMENT NUMBER-DATE  
05587 JUN 27 08  
FPSC-COMMISSION CLERK



Jessica Cano  
Attorney  
Florida Power & Light Company  
700 Universe Boulevard  
Juno Beach, FL 33408-0420  
(561) 304-5226  
(561) 691-7135 (Facsimile)

June 26, 2008

**VIA ELECTRONIC DELIVERY**

Ms. Ann Cole  
Division of the Commission Clerk and  
Administrative Services  
Florida Public Service Commission  
Betty Easley Conference Center  
2540 Shumard Oak Boulevard, Room 110  
Tallahassee, FL 32399-0850

Re: **PSC Consolidated Docket Nos. 080203-EI, 080245-EI, and 080246-EI**

Dear Ms. Cole:

Enclosed for filing on behalf of Florida Power & Light Company ("FPL") is FPL's Late Filed Hearing Exhibit No. 99 requested to be filed during Dr. Rosemary Morley's testimony during the hearing on June 23, 2008.

Please contact me if you or your staff has any questions regarding this filing.

Sincerely,

*s/ Jessica A. Cano*

Jessica A. Cano

Enclosure

cc: Martha Brown (w/ enc.)

DOCUMENT NUMBER-DATE  
05587 JUN 27 08  
FPSC-COMMISSION CLERK

**Q.**

Late Filed Hearing Exhibit No. 99 - November 2007 University of Florida study regarding population data.


**A.**

Attached is the November Forecast from Economic Demographic Research's estimating conference on October 30, 2007. Additionally, FPL has provided a table that includes historical growth calculations in addition to the forecast.

DOCUMENT NUMBER-DATE

05587 JUN 27 8

FPSC-COMMISSION-CLERK



**EDR**

# Office of Economic & Demographic Research

THE FLORIDA LEGISLATURE

[HOME](#)   [SITEMAP](#)   [CONTACT US](#)   [ABOUT US](#)

Date last updated: 11/07/2007

[Home](#)  
[Data](#)  
[Conferences](#)  
[Population](#)  
[Redistricting](#)  
[Reports](#)  
[Related](#)  
[Sites](#)  
[Citizen's Initiatives](#)  
[County Profiles](#)  
[Criminal Justice](#)

## Demographic Estimating Conference

Florida Demographic Forecast  
Last conference held: October 30, 2007

[Executive Summary](#)

The following tables are available for the October 30, 2007, Florida Demographic estimating conference:


- [Tables](#)
- [Charts](#)
- [Florida Population and Components of Change \(Fiscal Years 1950-51 through 2029-30\)](#)

Official April 1, 2007 Florida Population Estimates by County and Municipality:

- Posted November 1, 2007
  - [Excel File \(.XLS\)](#)
  - [Adobe File \(.PDF\)](#)

Previous conference results:

- [February 2007](#)
- [October 2006](#)
- [February 2006](#)
- [October 2005](#)
- [February 2005](#)
- [October 2004](#)
- [February 2004](#)



[Privacy Statement](#)

## Demographic Estimating Conference

### Executive Summary

The Demographic Estimating Conference met on October 30, 2007 to adopt a new forecast through 2012 based on a preliminary April 1, 2007 population estimate, and demographic trends for births, deaths, and net migration.

Florida's April 1, 2007 preliminary population estimate was 18,680,367, down by 49,227 from the July 2007 Demographic Estimating Conference. The number of households was also estimated to be lower (7,424,897 as compared to the previous forecast of 7,444,939).

The conference focused on the components of population growth, such as births, deaths, and net migration. Discussion centered on the composition of births and birth rates by race and Hispanic origin, as well as domestic and international migration. Most of Florida's growth is from net migration: 88.7 percent between April 1, 2000 and April 1, 2006. The conference also discussed the impact that the current housing slowdown may be having on domestic migration decisions and the effect this could have on population growth in the state.

As a result of the current housing and job markets, the conference agreed to a state population forecast of slower growth through 2012. By 2012, Florida's population is expected to surpass the 20-million mark, totaling over 20,360,750.

## **FLORIDA DEMOGRAPHIC ESTIMATING CONFERENCE**

### **Tables**

**Held October 30, 2007**

## Florida Resident Population

	FDEC, 07/07 (As of 4/1)	% Chg	FDEC, 10/07 (As of 4/1)	% Chg
1990	12,938,071	2.27%	12,938,071	2.27%
1991	13,258,732	2.48%	13,258,732	2.48%
1992	13,487,541	1.80%	13,497,541	1.80%
1993	13,730,115	1.72%	13,730,115	1.72%
1994	14,043,757	2.28%	14,043,757	2.28%
1995	14,335,992	2.08%	14,335,992	2.08%
1996	14,623,421	2.00%	14,623,421	2.00%
1997	14,938,314	2.15%	14,938,314	2.15%
1998	15,230,421	1.96%	15,230,421	1.96%
1999	15,580,244	2.30%	15,580,244	2.30%
2000	15,982,824	2.58%	15,982,824	2.58%
2001	16,330,224	2.17%	16,330,224	2.17%
2002	16,674,608	2.11%	16,674,608	2.11%
2003	17,071,508	2.38%	17,071,508	2.38%
2004	17,516,732	2.61%	17,516,732	2.61%
2005	17,918,227	2.29%	17,918,227	2.29%
2006	18,348,624	2.40%	18,349,132	2.40%
2007	18,729,588	2.08%	18,680,367	1.81%
Begins forecast.				
2008	19,132,888	2.15%	18,977,820	1.59%
2009	19,563,430	2.25%	19,278,665	1.59%
2010	19,974,790	2.10%	19,820,532	1.77%
2011	20,365,996	1.96%	19,997,465	1.92%
2012	20,742,470	1.85%	20,360,750	1.82%
2013	21,110,751	1.78%	20,704,460	1.69%
2014	21,473,421	1.72%	21,043,860	1.64%
2015	21,831,512	1.67%	21,386,860	1.63%
2016	22,185,953	1.62%	21,733,970	1.62%
2017	22,536,680	1.58%	22,084,825	1.61%
2020	23,552,138	1.53%	23,146,120	1.59%
2025	25,085,972	1.27%	24,766,129	1.36%
2030	26,513,331	1.11%	26,275,591	1.19%

## Florida Resident Households

	FDEC, 07/07 (As of 4/1)	% Chg	FDEC, 10/07 (As of 4/1)	% Chg
1990	5,134,869	3.40%	5,134,869	3.40%
1991	5,283,154	2.89%	5,283,154	2.89%
1992	5,378,499	1.80%	5,378,499	1.80%
1993	5,478,476	1.86%	5,478,476	1.86%
1994	5,589,093	2.02%	5,589,093	2.02%
1995	5,697,328	1.94%	5,697,328	1.94%
1996	5,806,031	1.91%	5,806,031	1.91%
1997	5,929,613	2.13%	5,929,613	2.13%
1998	6,040,514	1.87%	6,040,514	1.87%
1999	6,182,346	2.35%	6,182,346	2.35%
2000	6,338,075	2.52%	6,338,075	2.52%
2001	6,483,040	2.29%	6,483,040	2.29%
2002	6,620,674	2.12%	6,620,674	2.12%
2003	6,778,804	2.39%	6,778,804	2.39%
2004	6,949,759	2.52%	6,949,759	2.52%
2005	7,109,208	2.29%	7,109,208	2.29%
2006	7,291,013	2.56%	7,291,013	2.56%
2007	7,444,939	2.11%	7,425,143	1.84%
Begins forecast.				
2008	7,607,344	2.18%	7,545,281	1.62%
2009	7,779,123	2.26%	7,665,631	1.60%
2010	7,943,089	2.11%	7,802,160	1.78%
2011	8,099,478	1.97%	7,952,641	1.93%
2012	8,249,821	1.86%	8,097,693	1.82%
2013	8,396,926	1.78%	8,234,963	1.70%
2014	8,541,818	1.73%	8,370,531	1.65%
2015	8,684,914	1.68%	8,507,540	1.64%
2016	8,826,564	1.63%	8,646,187	1.63%
2017	8,966,760	1.59%	8,786,331	1.62%
2020	9,372,836	1.54%	9,210,279	1.60%
2025	9,986,839	1.28%	9,857,755	1.37%
2030	10,558,796	1.12%	10,461,296	1.20%



FLORIDA DEMOGRAPHIC ESTIMATING CONFERENCE  
Held October 30, 2007

	FISCAL YEAR AVERAGE																			
	2006-1	2006-2	2006-3	2006-4	2007-1	2007-2	2007-3	2007-4	2008-1	2008-2	2008-3	2008-4	2009-1	2009-2	2004-05	2005-06	2006-07	2007-08	2008-09	
Population																				
FDEC, 07/2007	18,297.4	18,397.3	18,493.1	18,588.0	18,682.8	18,776.9	18,874.0	18,975.3	19,079.4	19,186.3	19,294.8	19,403.2	19,510.5	19,616.4	17,821.6	18,242.5	18,635.1	19,028.6	19,455.2	
FDEC, 10/2007	18,295.1	18,394.9	18,492.5	18,583.5	18,642.0	18,716.7	18,793.2	18,897.3	18,941.0	19,014.6	19,386.5	19,163.2	19,239.4	19,317.9	17,916.2	18,240.2	18,601.7	18,904.0	19,232.3	
Growth Rate																				
FDEC, 07/2007	2.33	2.20	2.10	2.07	2.04	2.04	2.08	2.16	2.21	2.26	2.28	2.27	2.25	2.19	2.39	2.36	2.15	2.11	2.25	
FDEC, 10/2007	2.36	2.19	1.92	1.77	1.70	1.86	1.60	1.69	1.67	1.86	1.56	1.57	1.60	1.64	2.38	2.36	1.98	1.63	1.58	
Net Change in Population																				
FDEC, 07/2007	105.2	100.0	95.8	94.9	94.9	94.6	97.1	101.3	104.2	108.9	105.4	108.5	107.3	105.9	403.1	424.2	379.6	409.5	430.0	
FDEC, 10/2007	107.1	98.8	87.5	81.0	78.6	76.7	74.6	74.1	73.7	73.6	73.9	74.7	76.2	75.5	404.7	422.6	323.8	295.9	303.3	
Households																				
FDEC, 07/2007	7,269.5	7,310.5	7,349.2	7,387.5	7,426.7	7,464.2	7,503.6	7,544.3	7,586.0	7,628.7	7,671.9	7,715.2	7,756.0	7,800.2	7,070.6	7,248.1	7,408.6	7,565.6	7,735.3	
FDEC, 10/2007	7,269.5	7,309.5	7,344.9	7,377.7	7,409.6	7,440.7	7,470.9	7,500.9	7,530.5	7,560.0	7,589.6	7,619.5	7,660.0	7,691.3	7,066.7	7,245.3	7,393.2	7,515.6	7,605.7	
Growth Rate																				
FDEC, 07/2007	2.47	2.27	2.13	2.10	2.09	2.09	2.13	2.19	2.23	2.27	2.29	2.28	2.24	2.20	2.97	2.48	2.22	2.15	2.25	
FDEC, 10/2007	2.51	2.23	1.96	1.80	1.74	1.89	1.63	1.61	1.59	1.59	1.57	1.58	1.61	1.65	2.36	2.48	2.04	1.85	1.59	
Net Change in Households																				
FDEC, 07/2007	44.1	41.0	38.7	38.9	35.2	38.5	39.4	40.8	41.7	42.7	43.3	43.3	42.8	42.2	161.8	176.0	153.7	164.5	171.6	
FDEC, 10/2007	44.9	40.2	35.4	32.8	31.9	31.1	30.2	30.0	29.7	29.5	29.6	28.9	30.5	31.4	162.6	177.4	131.2	119.3	121.3	
Household Size																				
FDEC, 07/2007	2.517	2.517	2.516	2.516	2.516	2.516	2.515	2.515	2.515	2.515	2.516	2.516	2.515	2.516	2.521	2.518	2.516	2.516	2.515	
FDEC, 10/2007	2.517	2.517	2.516	2.516	2.516	2.516	2.516	2.515	2.515	2.515	2.515	2.515	2.515	2.515	2.521	2.518	2.516	2.515	2.515	
Growth Rate																				
FDEC, 07/2007	-0.13	-0.07	-0.03	-0.03	-0.04	-0.05	-0.04	-0.03	-0.01	-0.01	-0.01	-0.01	-0.01	-0.01	0.02	-0.12	-0.06	-0.03	-0.01	
FDEC, 10/2007	-0.13	-0.05	-0.03	-0.03	-0.03	-0.04	-0.03	-0.03	-0.02	-0.01	-0.01	-0.01	-0.01	-0.01	0.02	-0.12	-0.06	-0.03	-0.01	
Net Migration																				
FDEC, 07/2007	91.1	85.7	81.4	80.3	79.8	79.9	82.3	86.4	89.3	92.0	93.6	93.6	92.5	91.1	350.8	368.0	321.2	350.0	370.8	
FDEC, 10/2007	91.2	82.2	70.2	69.1	60.2	58.0	55.5	55.0	54.4	54.2	54.4	55.2	56.7	59.9	362.5	301.0	251.4	219.2	225.2	
Births																				
FDEC, 07/2007	57.1	57.4	57.7	57.9	58.2	58.5	58.8	59.1	59.5	59.8	60.1	60.4	60.8	61.1	221.3	227.8	232.3	237.2	242.4	
FDEC, 10/2007	58.3	59.0	59.6	60.2	60.6	61.0	61.2	61.5	61.7	62.0	62.2	62.4	62.8	62.8	221.6	231.7	241.4	248.4	249.9	
Deaths																				
FDEC, 07/2007	43.0	43.1	43.2	43.4	43.6	43.8	44.0	44.3	44.6	44.9	45.3	45.6	46.0	46.4	169.0	171.5	173.5	177.8	183.2	
FDEC, 10/2007	42.5	42.4	42.3	42.2	42.2	42.3	42.3	42.4	42.4	42.5	42.7	42.6	43.0	43.2	169.3	170.1	169.0	169.7	171.8	
Net Natural Increase																				
FDEC, 07/2007	14.1	14.3	14.4	14.6	14.7	14.7	14.8	14.8	14.9	14.9	14.8	14.8	14.8	14.7	52.3	55.3	58.4	59.4	59.2	
FDEC, 10/2007	15.8	13.6	17.4	18.0	18.4	18.7	18.9	19.1	19.3	19.4	19.5	19.5	19.6	19.6	52.2	61.5	72.4	76.7	78.2	

## FLORIDA DEMOGRAPHIC ESTIMATING CONFERENCE

Held October 30, 2007

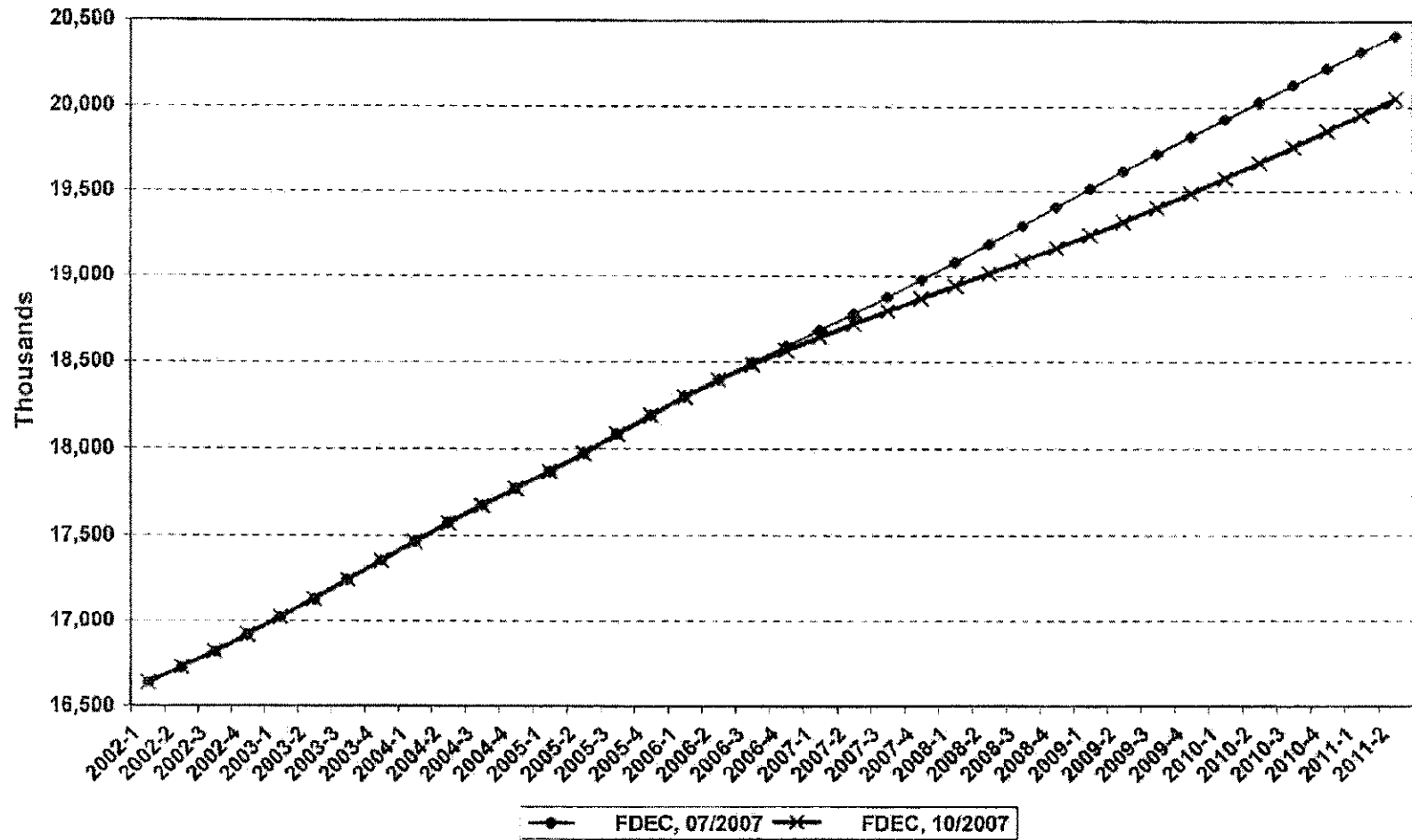
	<u>2003-04</u>	<u>2004-05</u>	<u>2005-06</u>	<u>2006-07</u>	<u>2007-08</u>	<u>2008-09</u>	<u>2009-10</u>	<u>2010-11</u>	<u>2011-12</u>	<u>2012-13</u>	<u>2013-14</u>	<u>2014-15</u>	<u>2015-16</u>	<u>2016-17</u>
Population														
FDEC, 07/2007	17,405.7	17,821.6	18,242.5	18,535.1	19,028.8	19,456.2	19,872.9	20,269.1	20,649.0	21,019.1	21,383.1	21,742.3	22,097.6	22,449.2
FDEC, 10/2007	17,404.2	17,819.2	18,240.2	18,501.7	18,904.0	19,202.3	19,531.5	19,932.7	20,271.8	20,619.3	20,959.0	21,300.9	21,647.0	21,996.9
Growth Rate														
FDEC, 07/2007	2.58	2.39	2.38	2.15	2.11	2.25	2.14	1.99	1.87	1.79	1.73	1.68	1.63	1.59
FDEC, 10/2007	2.56	2.38	2.36	1.98	1.63	1.58	1.71	1.90	1.85	1.71	1.65	1.63	1.62	1.62
Net Change in Population														
FDEC, 07/2007	444.9	403.1	424.2	379.6	409.5	430.0	407.9	389.6	375.1	367.4	362.1	357.6	354.0	350.2
FDEC, 10/2007	440.8	404.7	422.6	323.8	295.9	303.3	348.7	378.1	359.8	342.4	339.6	343.6	347.6	351.3
Households														
FDEC, 07/2007	6,907.2	7,070.6	7,246.1	7,406.6	7,565.6	7,736.3	7,902.8	8,050.8	8,212.5	8,360.3	8,505.7	8,648.2	8,791.2	8,931.8
FDEC, 10/2007	6,905.6	7,069.7	7,245.3	7,393.2	7,515.9	7,635.1	7,766.6	7,914.8	8,062.2	8,201.0	8,335.6	8,473.2	8,611.4	8,751.2
Growth Rate														
FDEC, 07/2007	2.52	2.37	2.48	2.22	2.15	2.26	2.15	2.06	1.88	1.80	1.74	1.69	1.64	1.60
FDEC, 10/2007	2.49	2.36	2.48	2.04	1.65	1.59	1.72	1.91	1.86	1.72	1.65	1.64	1.63	1.62
Net Change in Households														
FDEC, 07/2007	171.1	161.9	178.0	153.7	164.5	171.6	162.8	155.5	149.8	146.8	144.6	142.9	141.5	140.0
FDEC, 10/2007	169.5	162.5	177.4	131.2	119.3	121.3	139.2	150.9	143.7	136.7	135.6	137.2	138.8	140.3
Household Size														
FDEC, 07/2007	2.520	2.521	2.518	2.518	2.515	2.515	2.515	2.515	2.514	2.514	2.514	2.514	2.514	2.513
FDEC, 10/2007	2.520	2.521	2.518	2.516	2.515	2.515	2.515	2.515	2.514	2.514	2.514	2.514	2.514	2.514
Growth Rate														
FDEC, 07/2007	0.06	0.02	-0.12	-0.06	-0.03	-0.01	-0.01	-0.01	-0.01	-0.01	-0.01	-0.01	-0.01	-0.01
FDEC, 10/2007	0.06	0.02	-0.12	-0.06	-0.03	-0.01	-0.01	-0.01	-0.01	-0.01	-0.01	-0.01	-0.01	-0.01
Net Migration														
FDEC, 07/2007	395.3	350.8	368.0	321.2	350.0	370.8	349.9	332.8	318.9	312.1	307.9	304.8	303.0	301.5
FDEC, 10/2007	393.8	352.5	361.0	251.4	219.2	225.2	270.8	300.8	283.1	265.2	264.2	269.1	274.3	279.5
Births														
FDEC, 07/2007	214.0	221.3	227.8	232.3	237.2	242.4	247.6	252.4	257.3	262.0	266.5	270.8	275.0	278.6
FDEC, 10/2007	215.3	221.6	231.7	241.4	246.4	249.9	252.9	256.0	259.7	263.4	267.1	270.6	274.0	277.2
Deaths														
FDEC, 07/2007	168.4	169.0	171.6	173.9	177.8	183.2	189.6	195.7	201.1	206.6	212.3	218.1	223.9	229.6
FDEC, 10/2007	168.2	169.3	170.1	169.0	169.7	171.8	175.0	178.7	182.9	187.2	191.6	196.1	200.7	205.4
Net Natural Increase														
FDEC, 07/2007	45.6	52.3	56.3	58.4	59.4	59.2	58.0	56.8	55.2	55.6	54.2	52.9	51.6	48.7
FDEC, 10/2007	47.1	52.2	61.6	72.4	76.7	78.2	77.9	77.3	76.6	76.1	75.4	74.5	73.3	71.8

## **FLORIDA DEMOGRAPHIC ESTIMATING CONFERENCE**

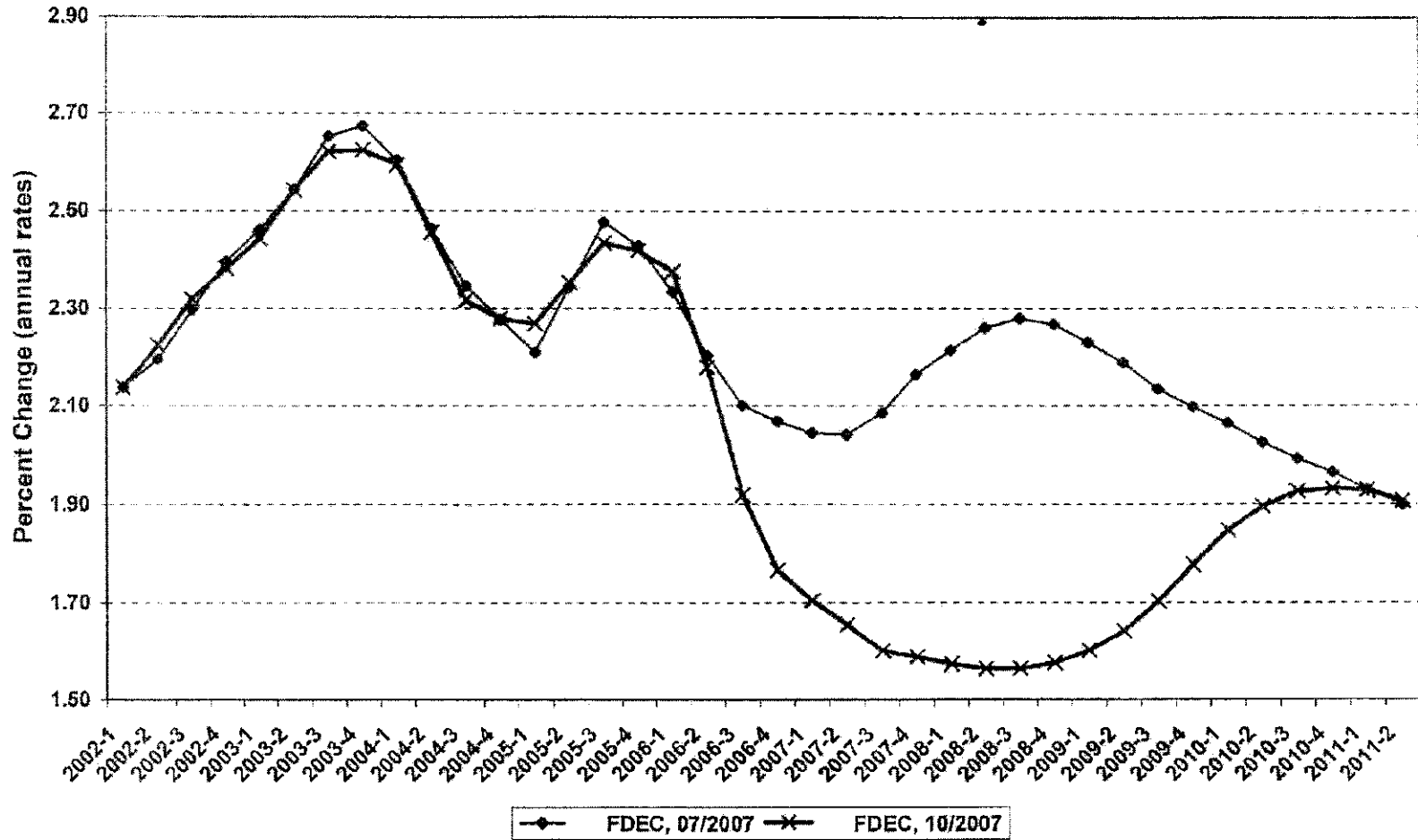
### **Charts**

**Held October 30, 2007**

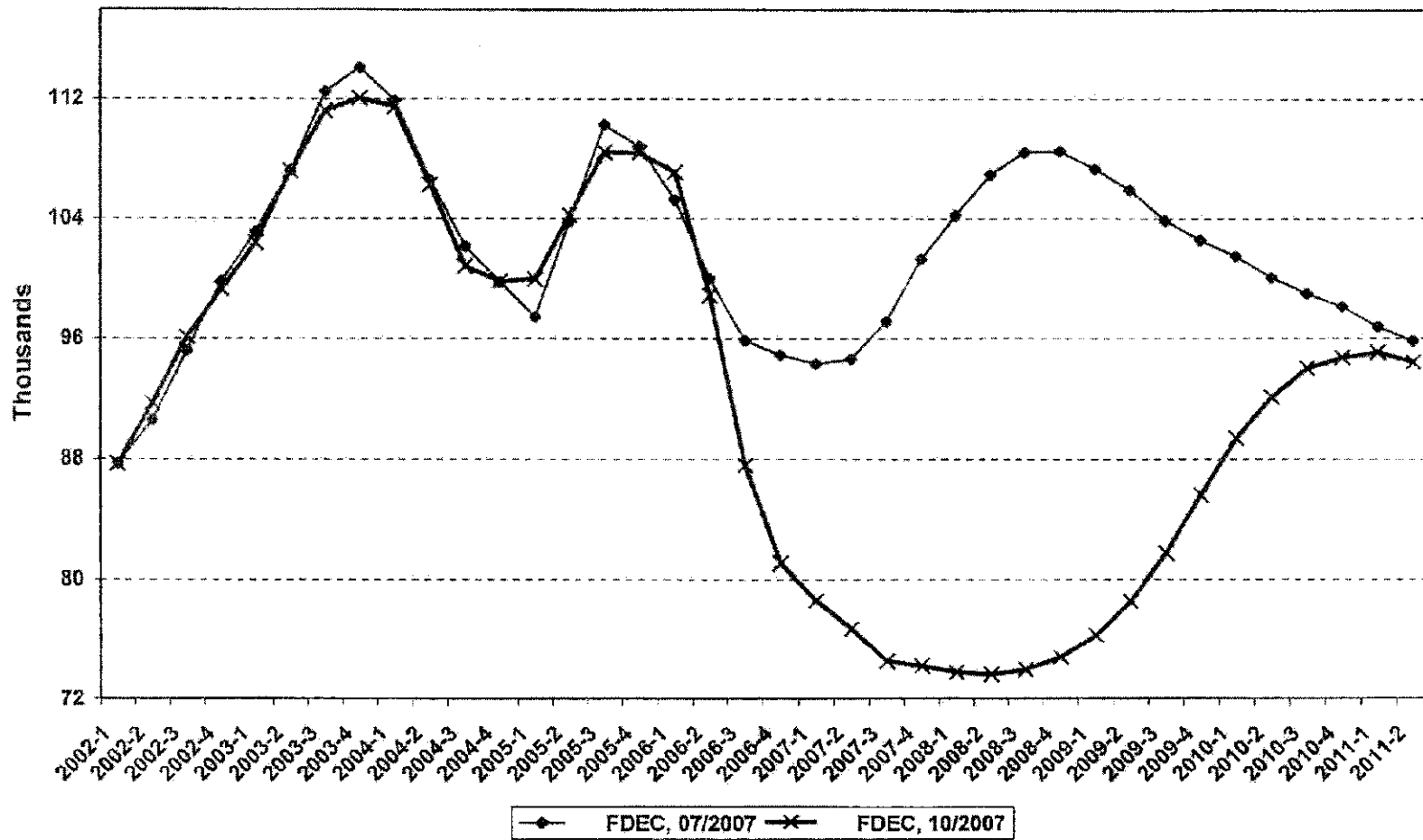
## Florida Resident Population



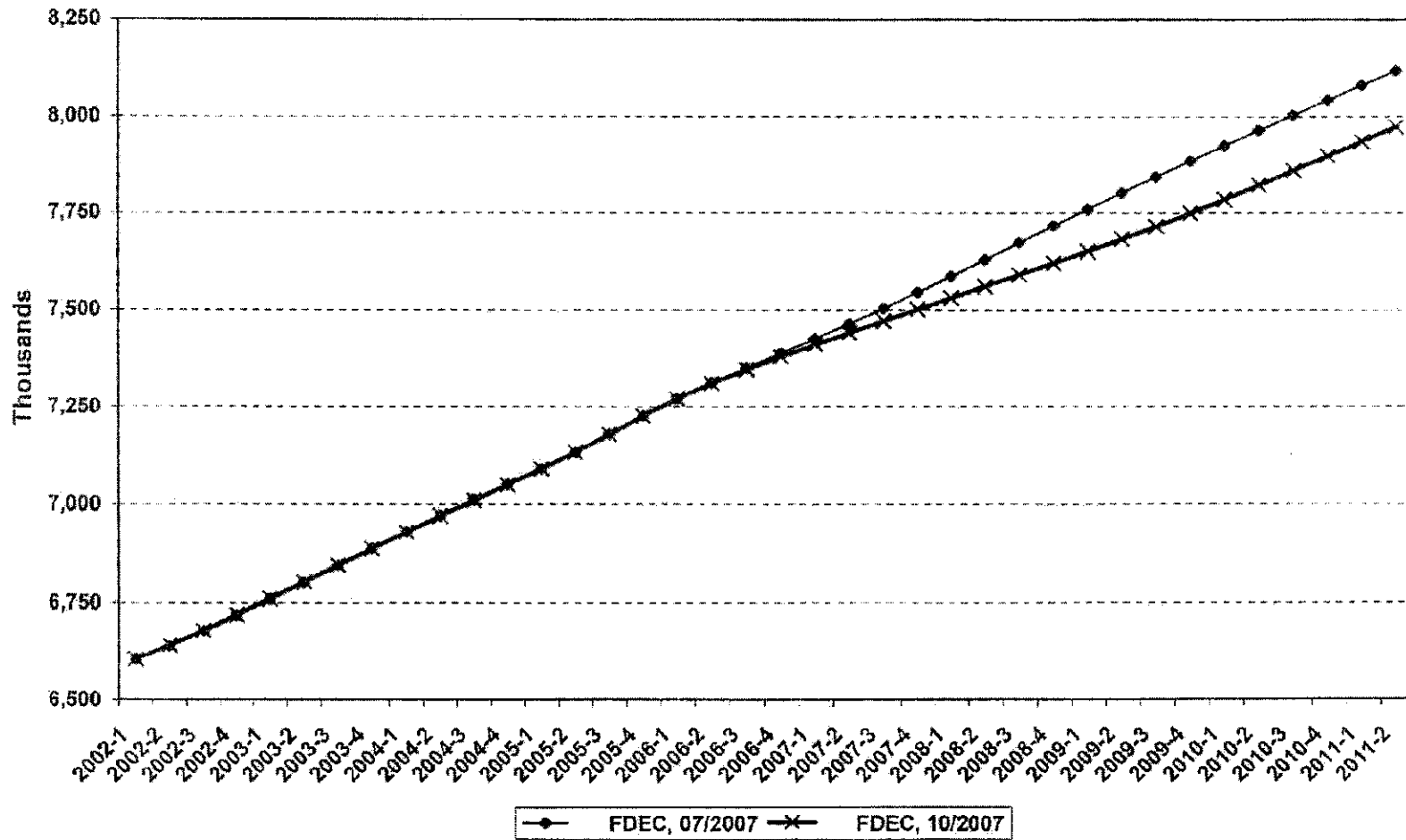
## Growth In Florida Resident Population



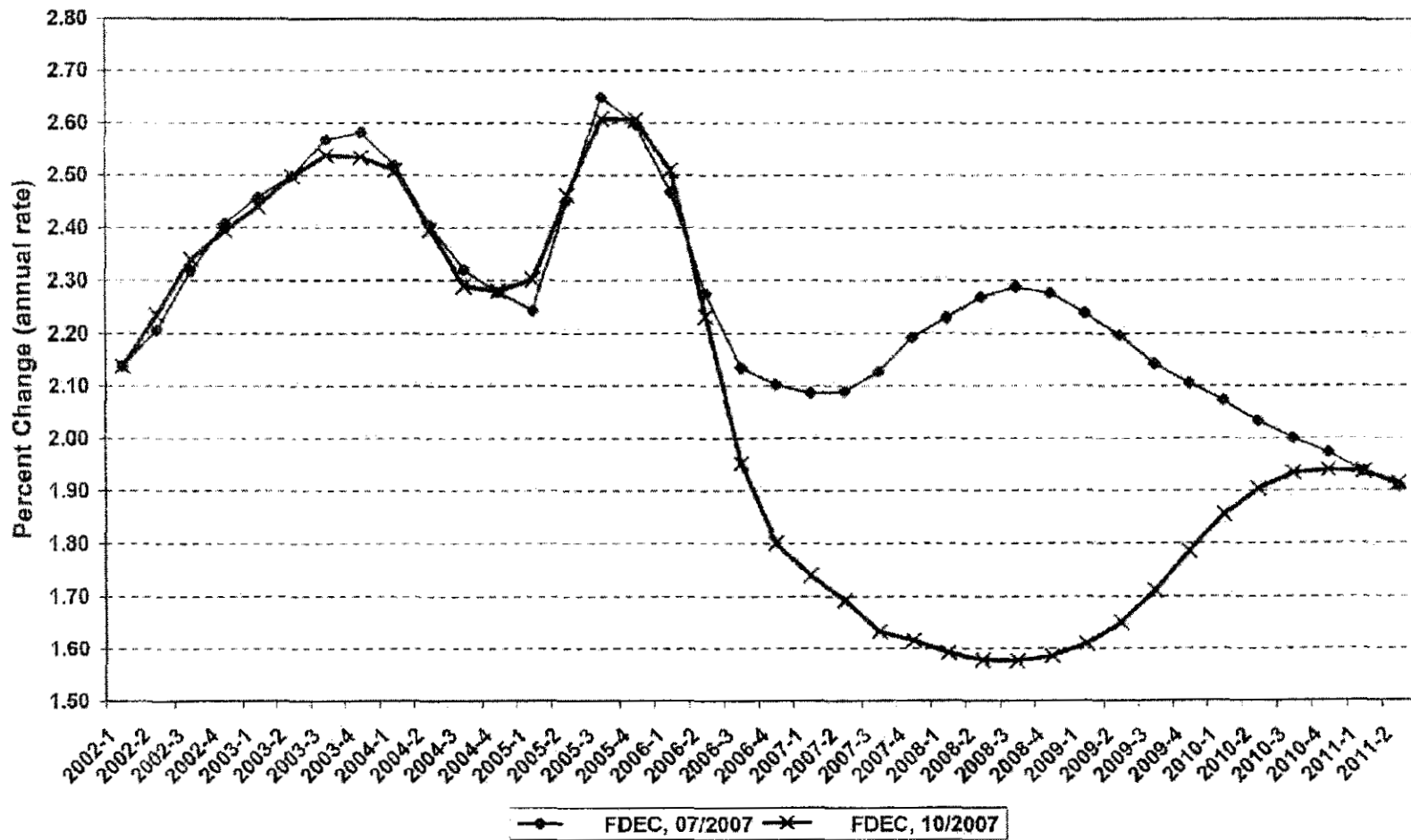
## Net Change In Florida Resident Population



## Florida Resident Households

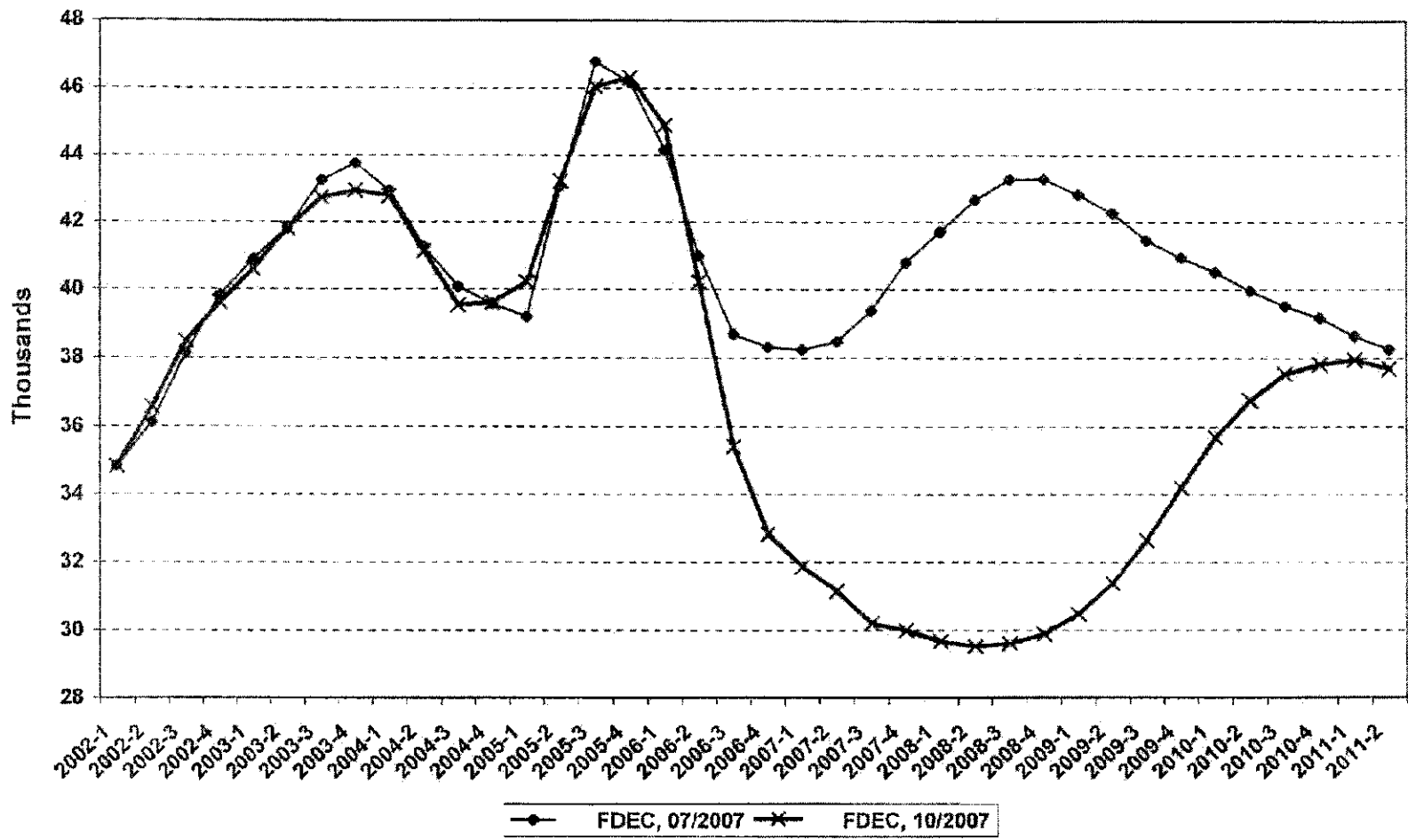


## Growth In Florida Resident Households

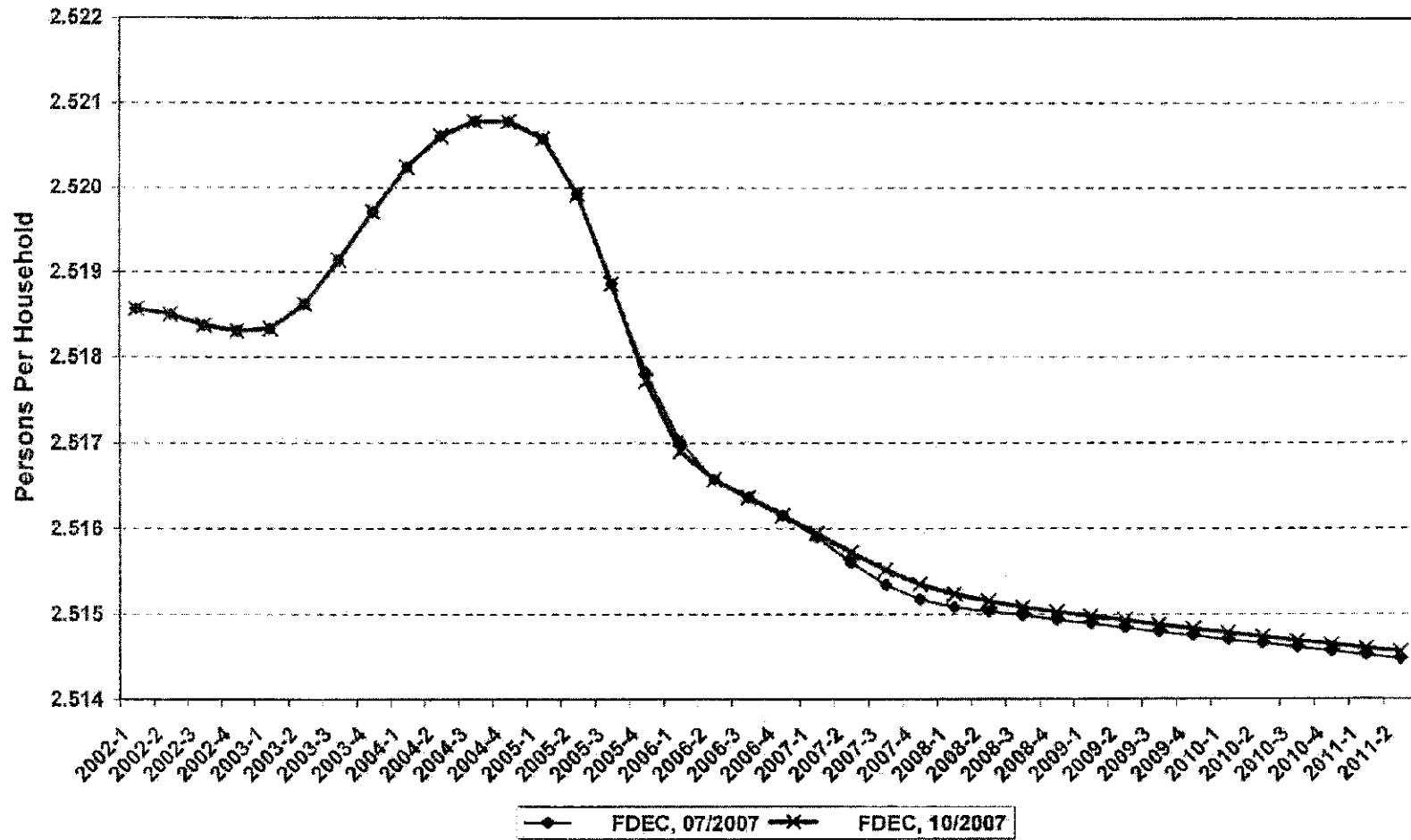




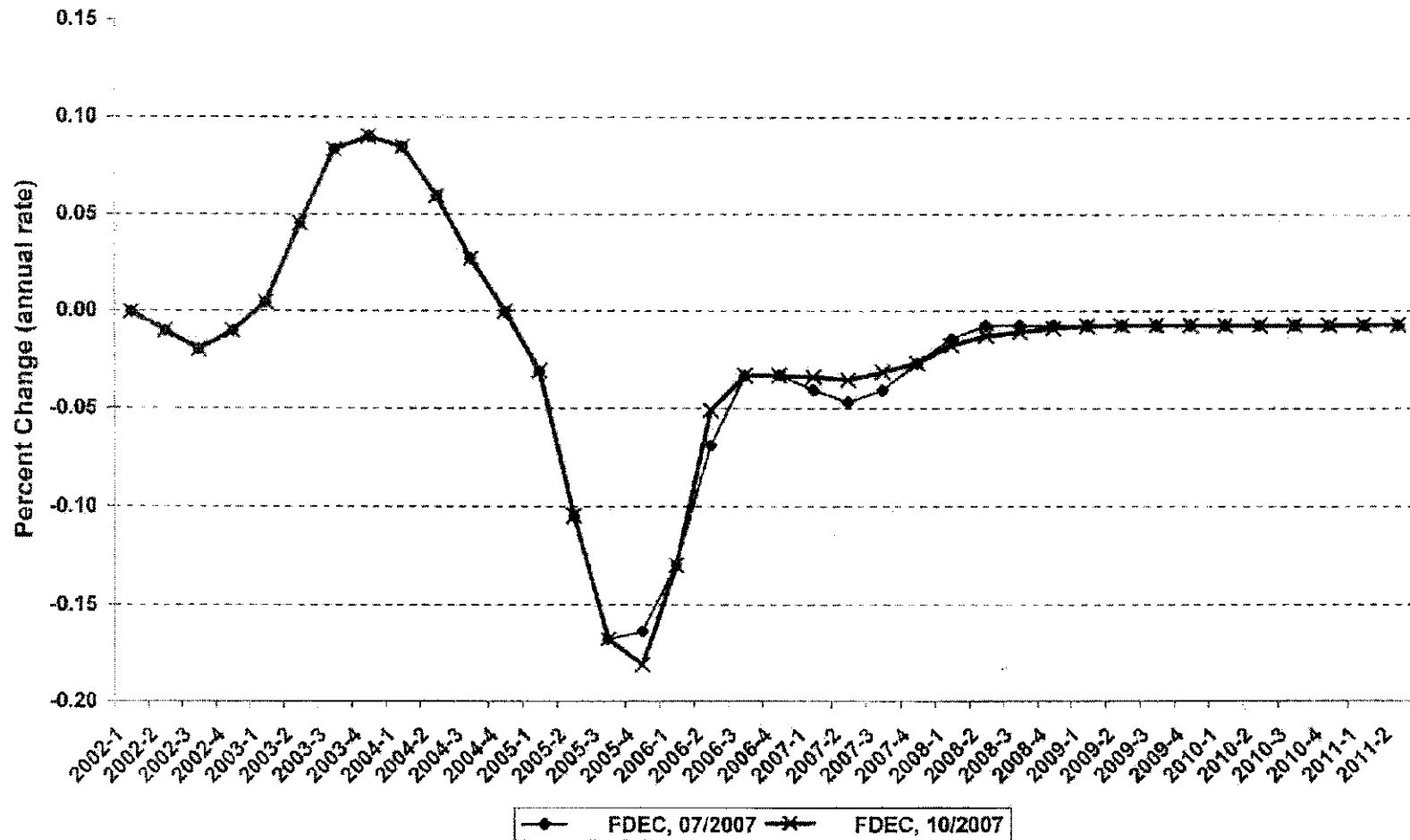
## Net Change In Florida Resident Households



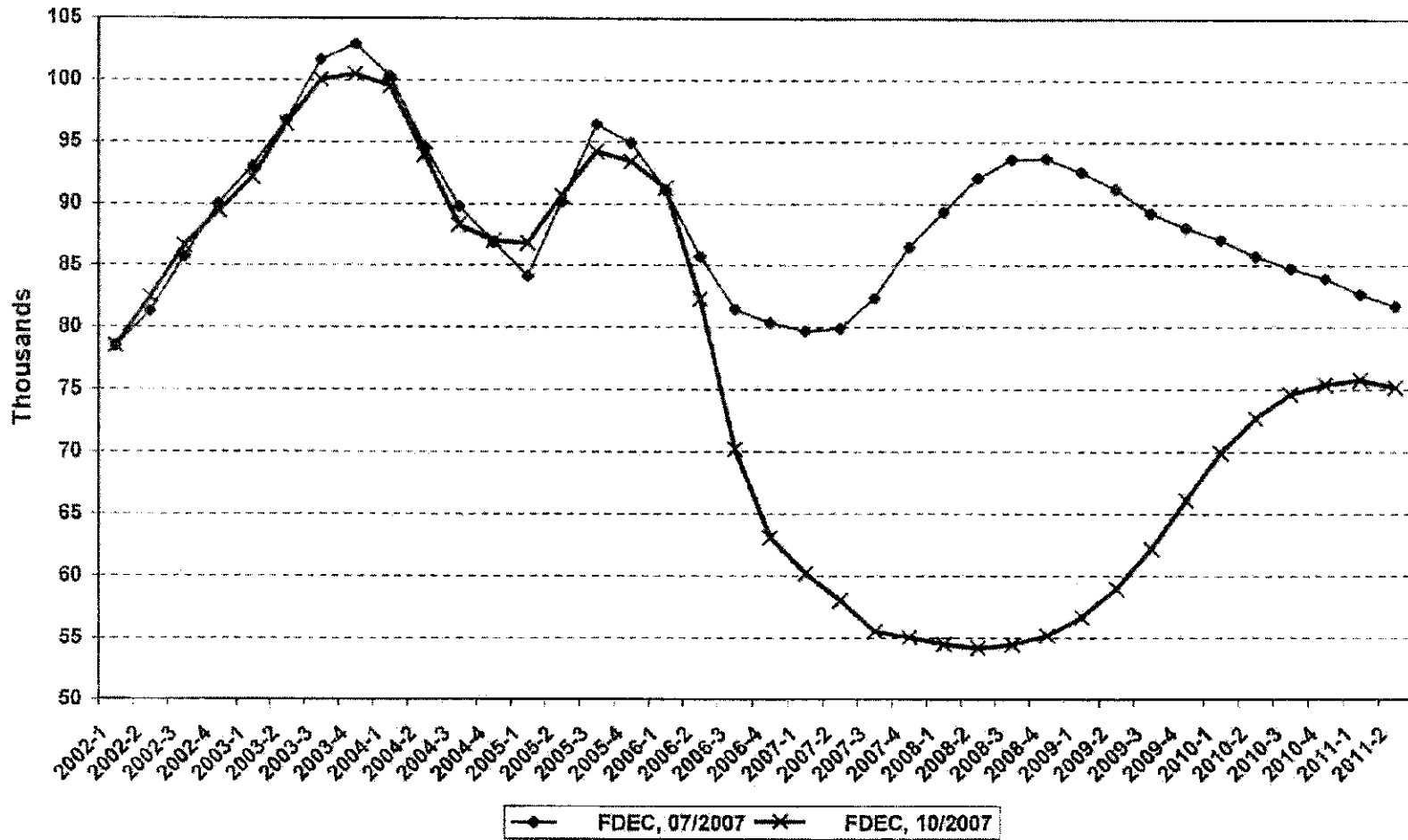
## Florida Average Household Size



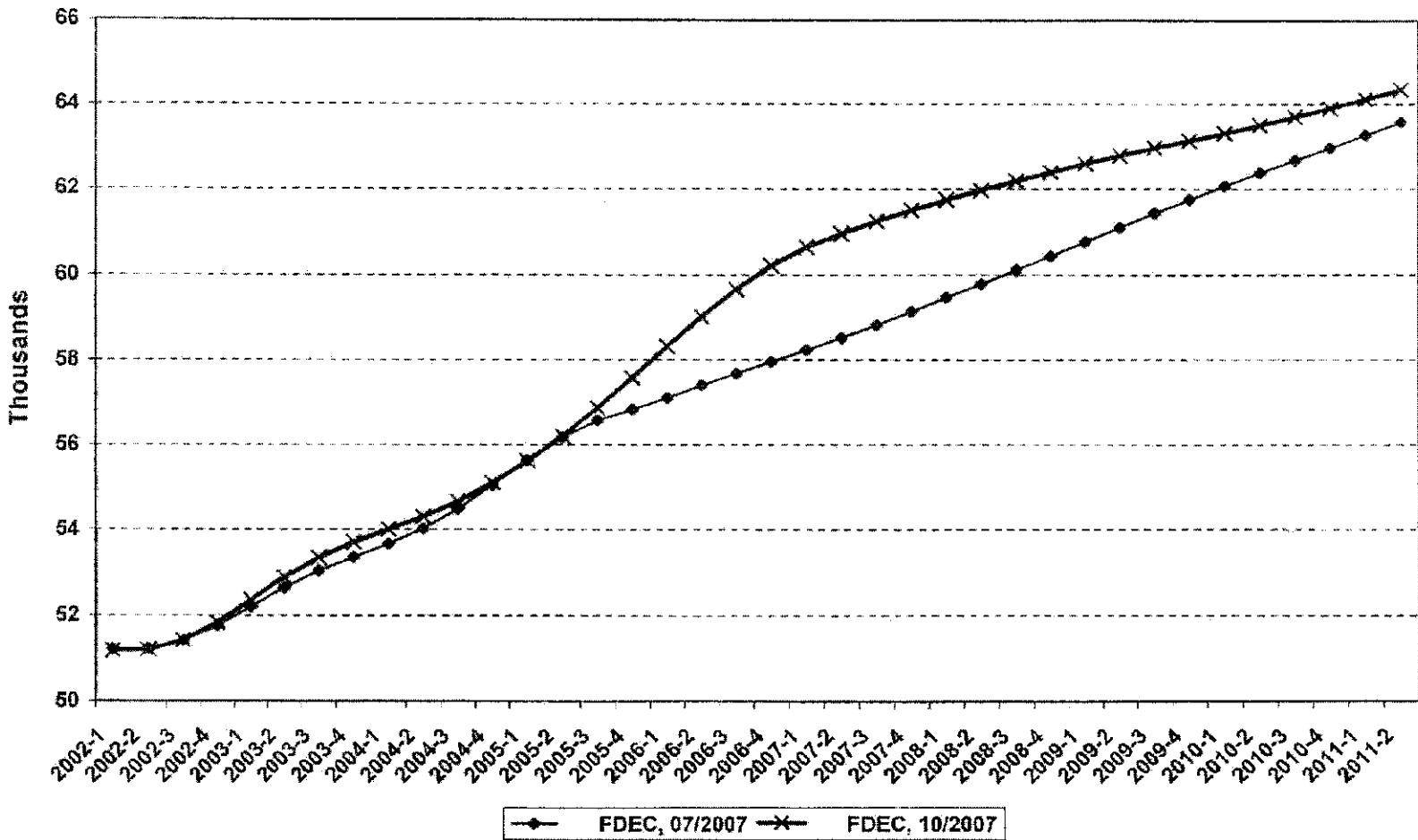
## Growth In Florida Household Size



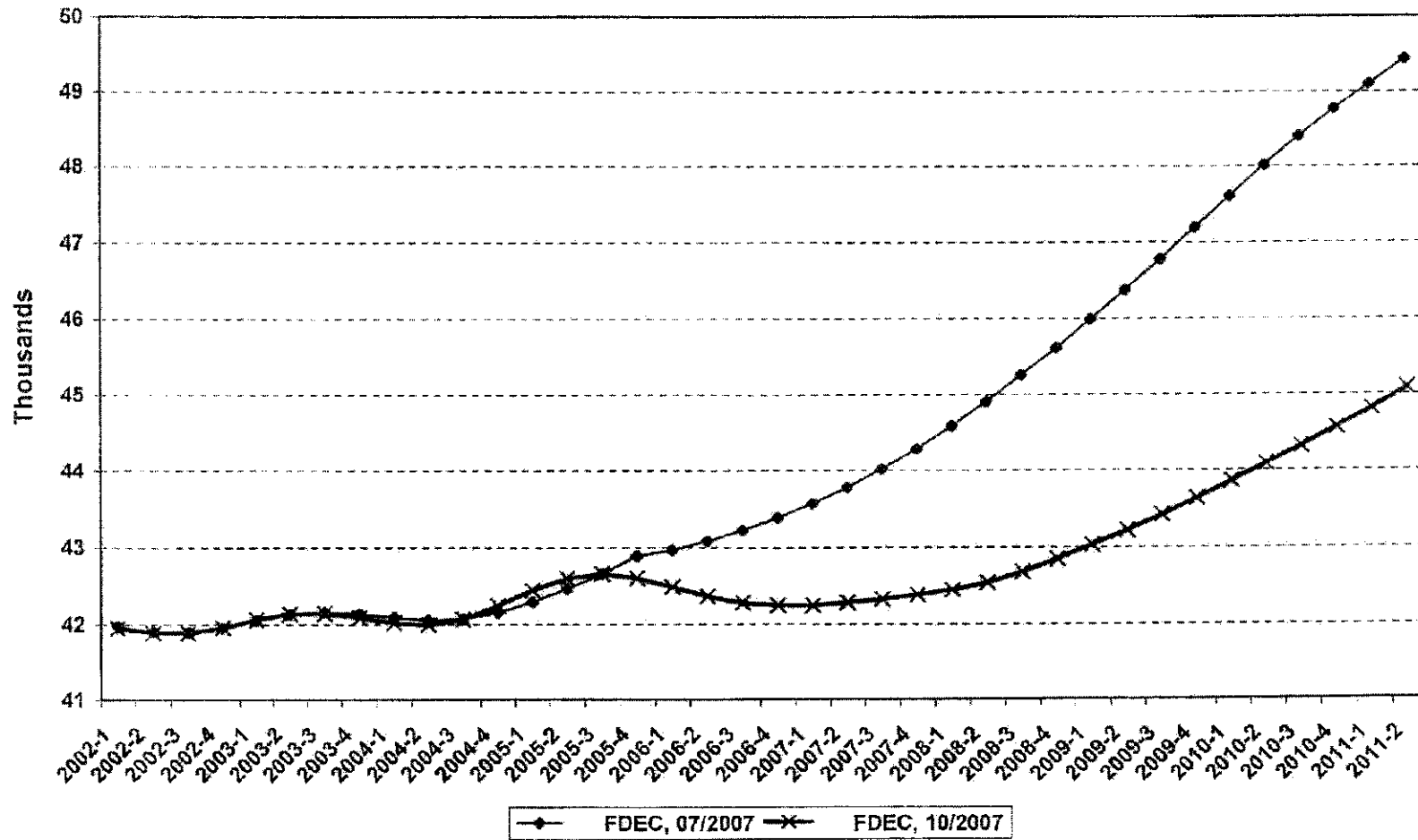
# Florida Net Migration



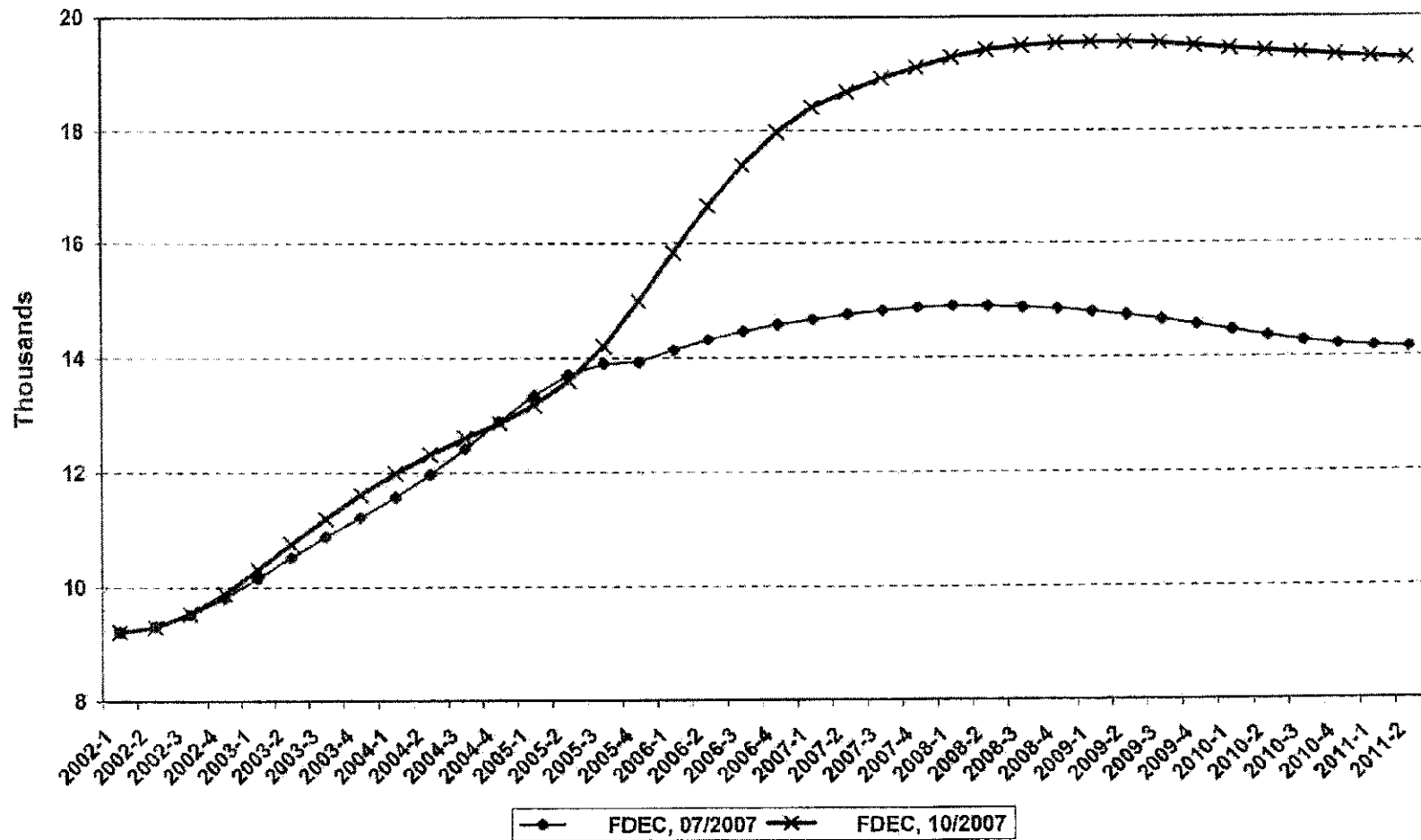
## Florida Resident Births



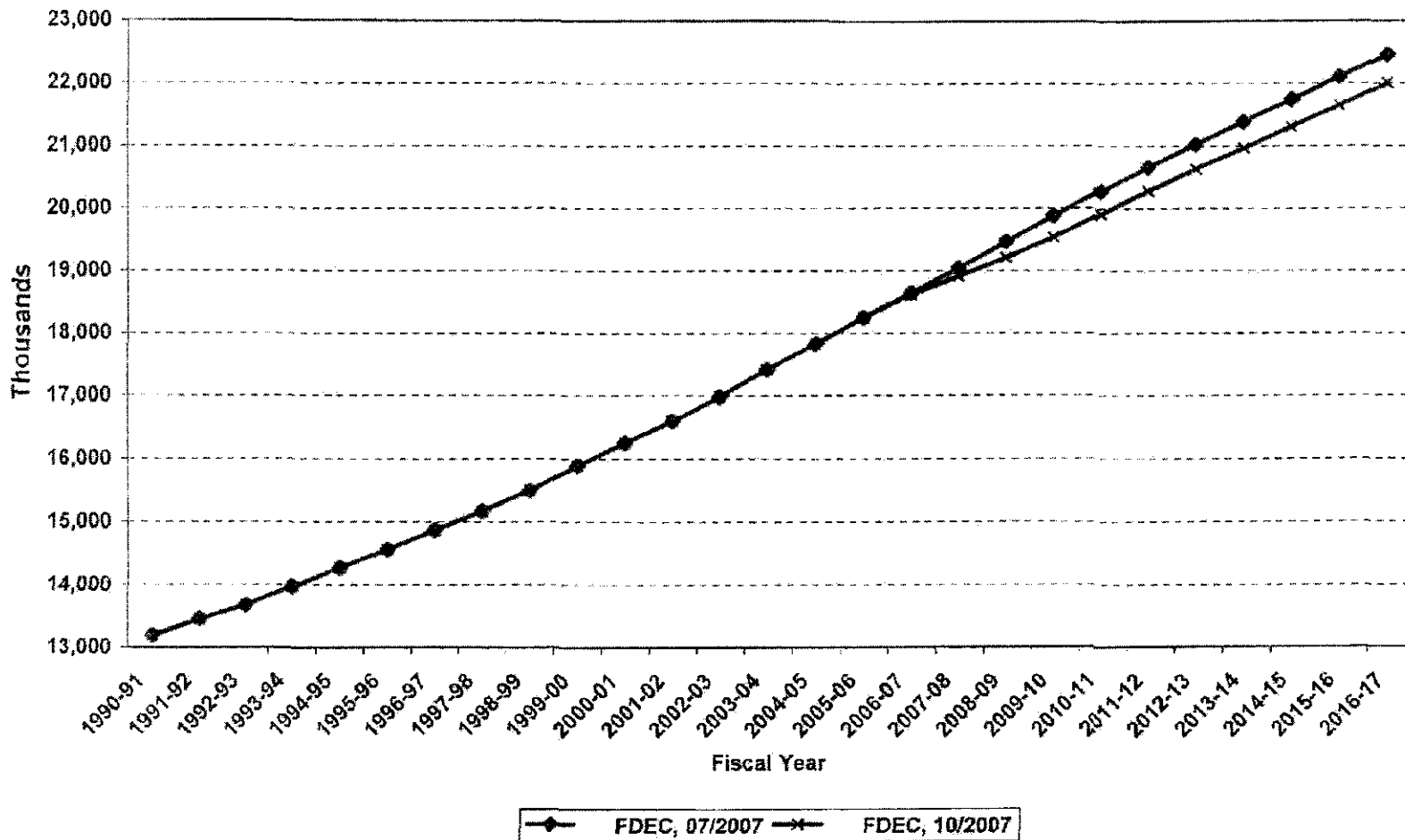
## Florida Resident Deaths



## Florida Net Natural Increase

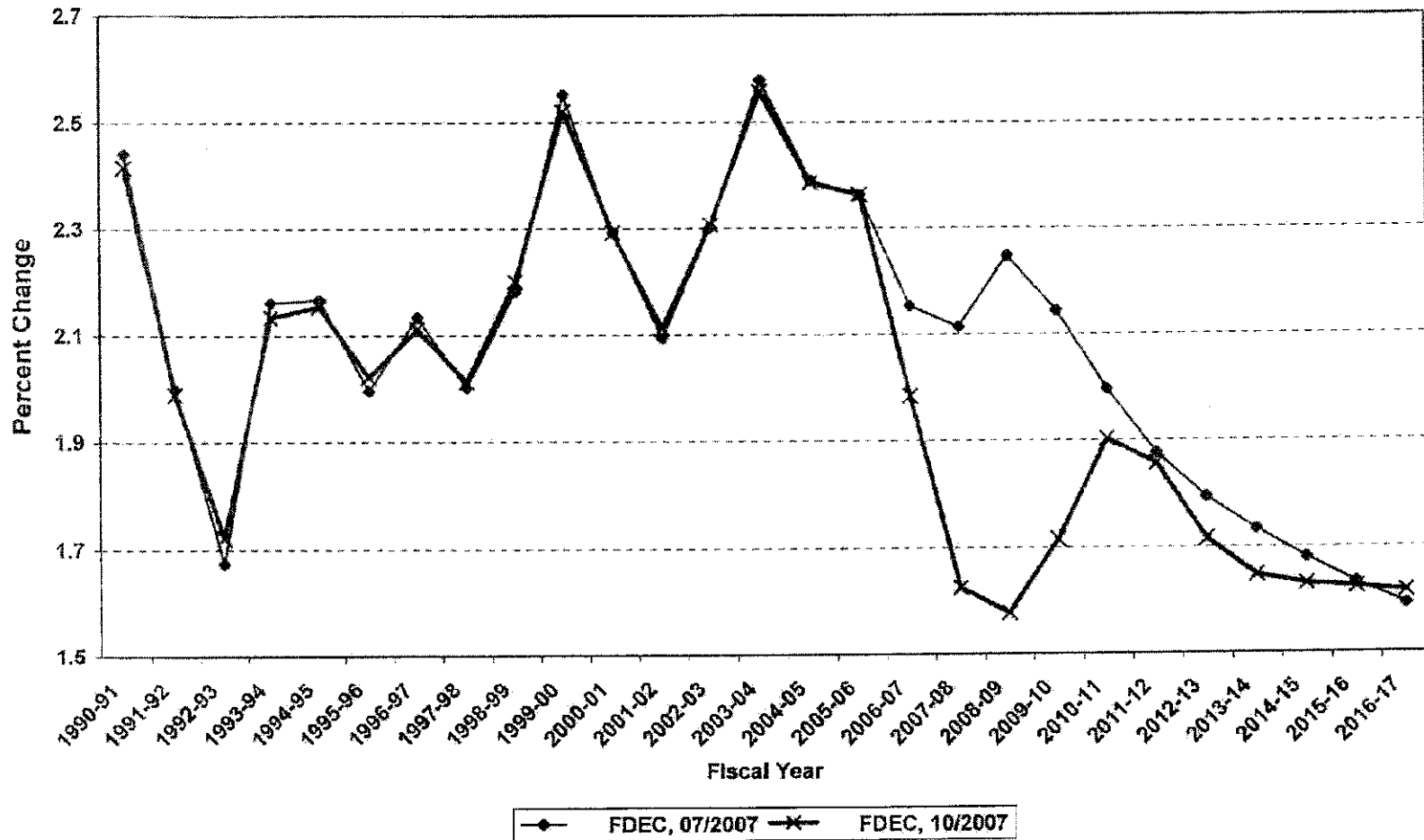


## Florida Resident Population

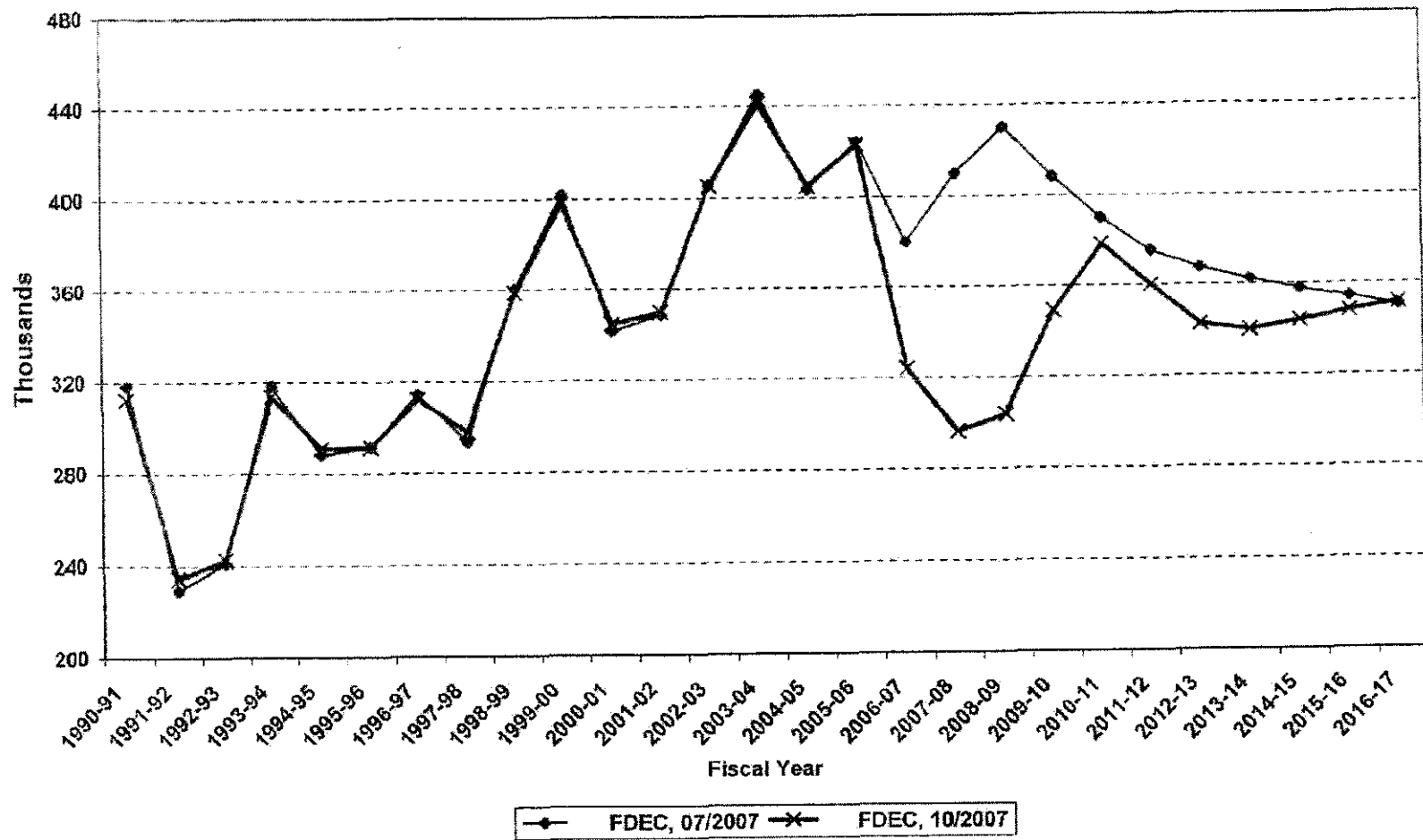




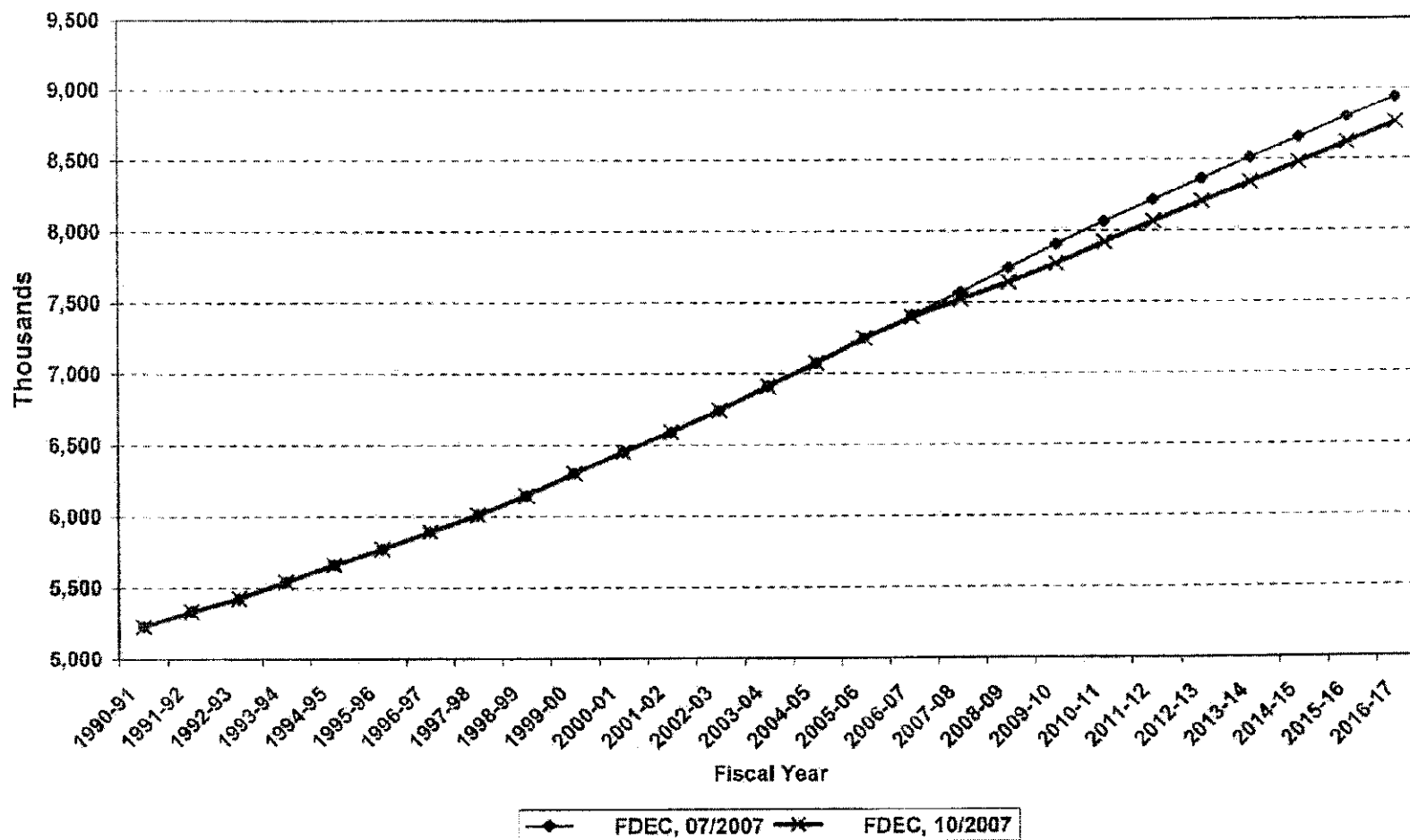
## Growth In Florida Resident Population



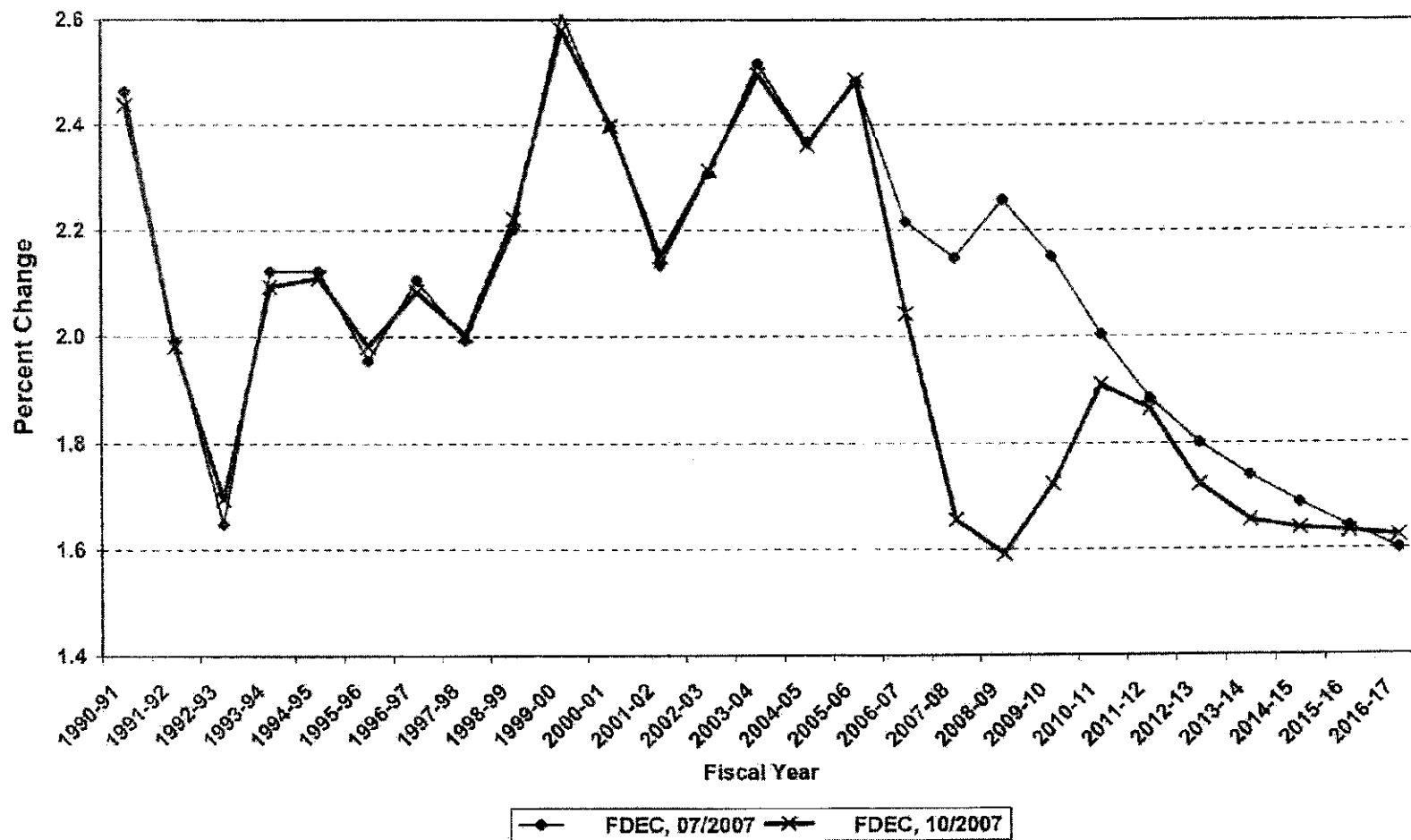
## Net Change In Florida Resident Population



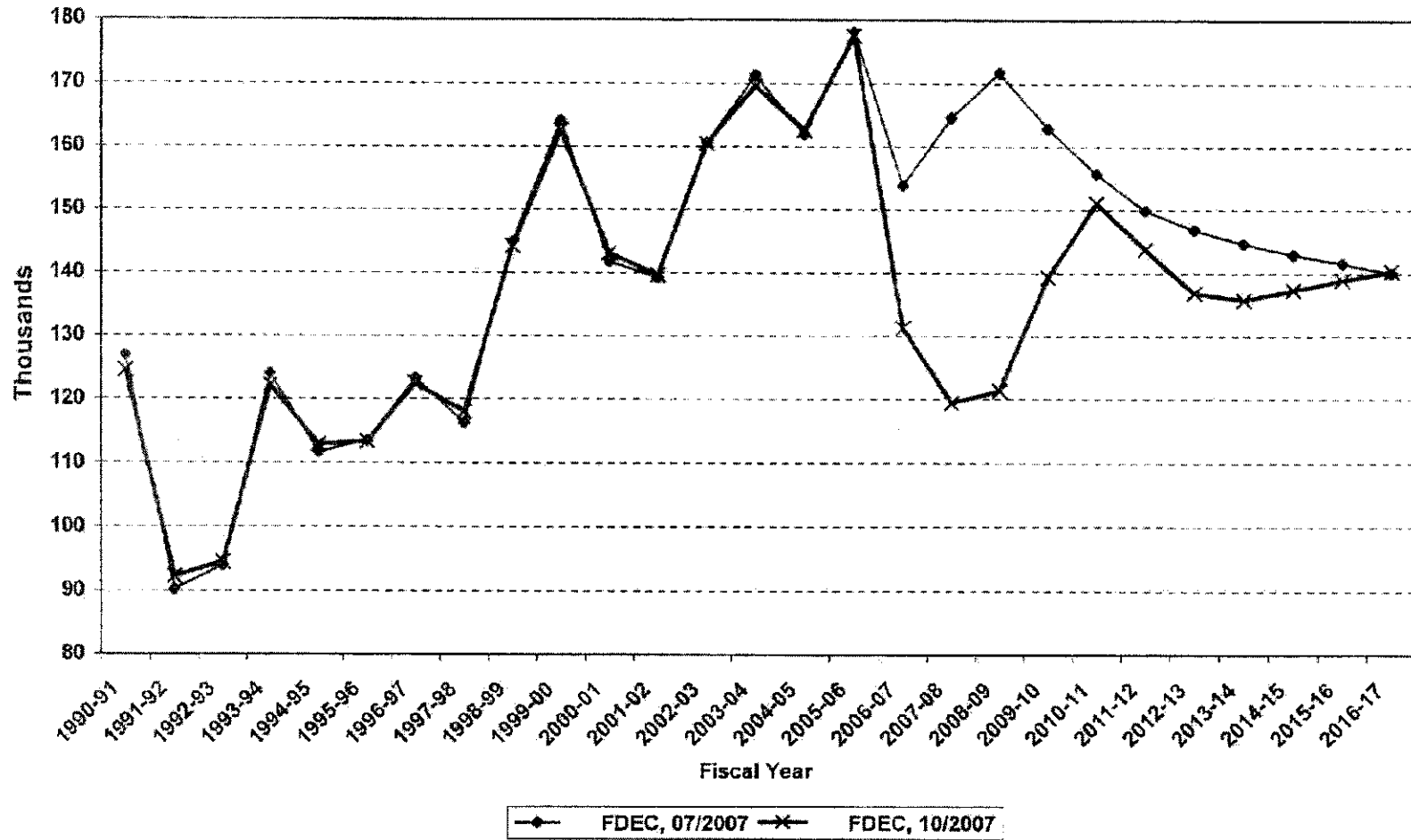
## Florida Resident Households



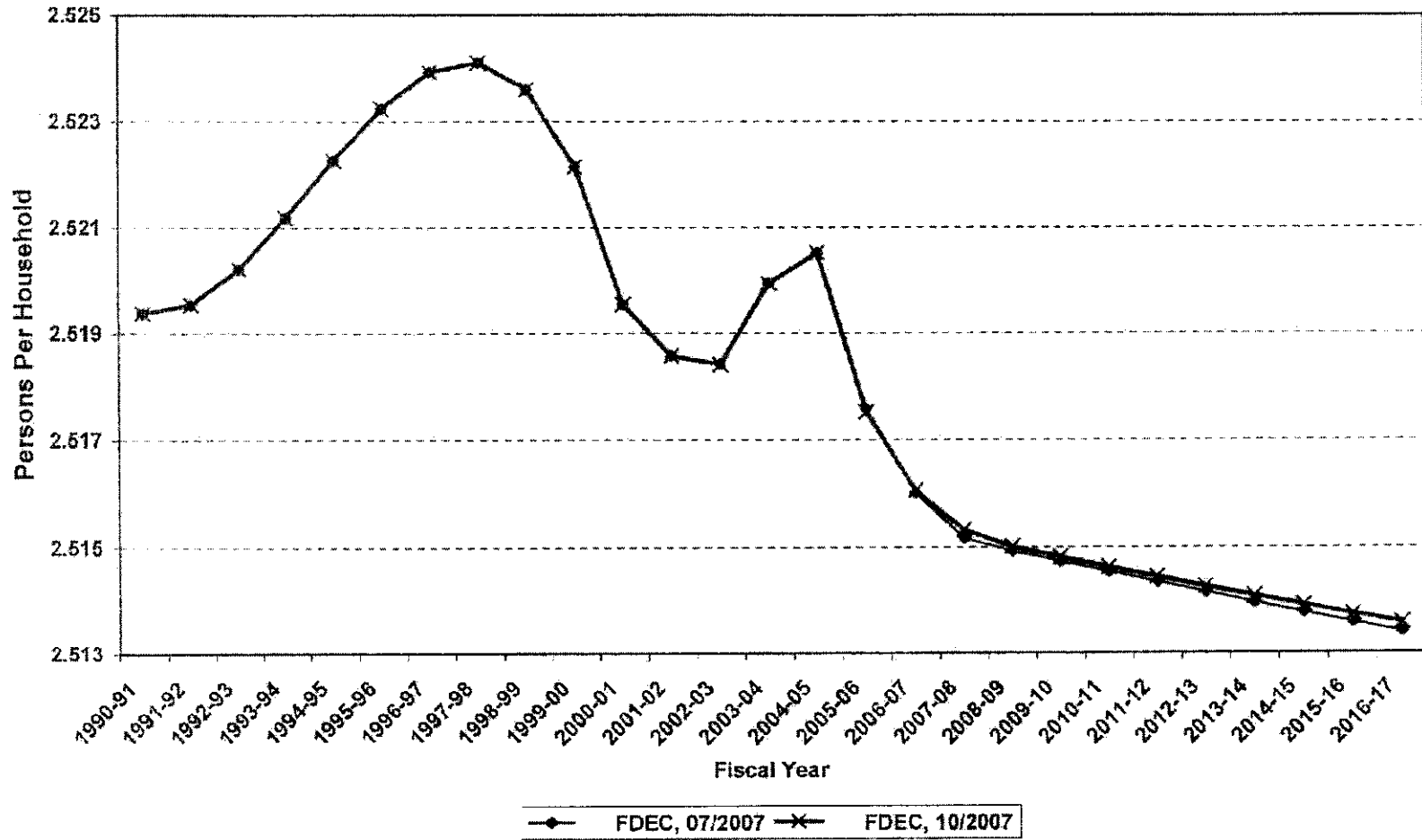
## Growth In Florida Resident Households



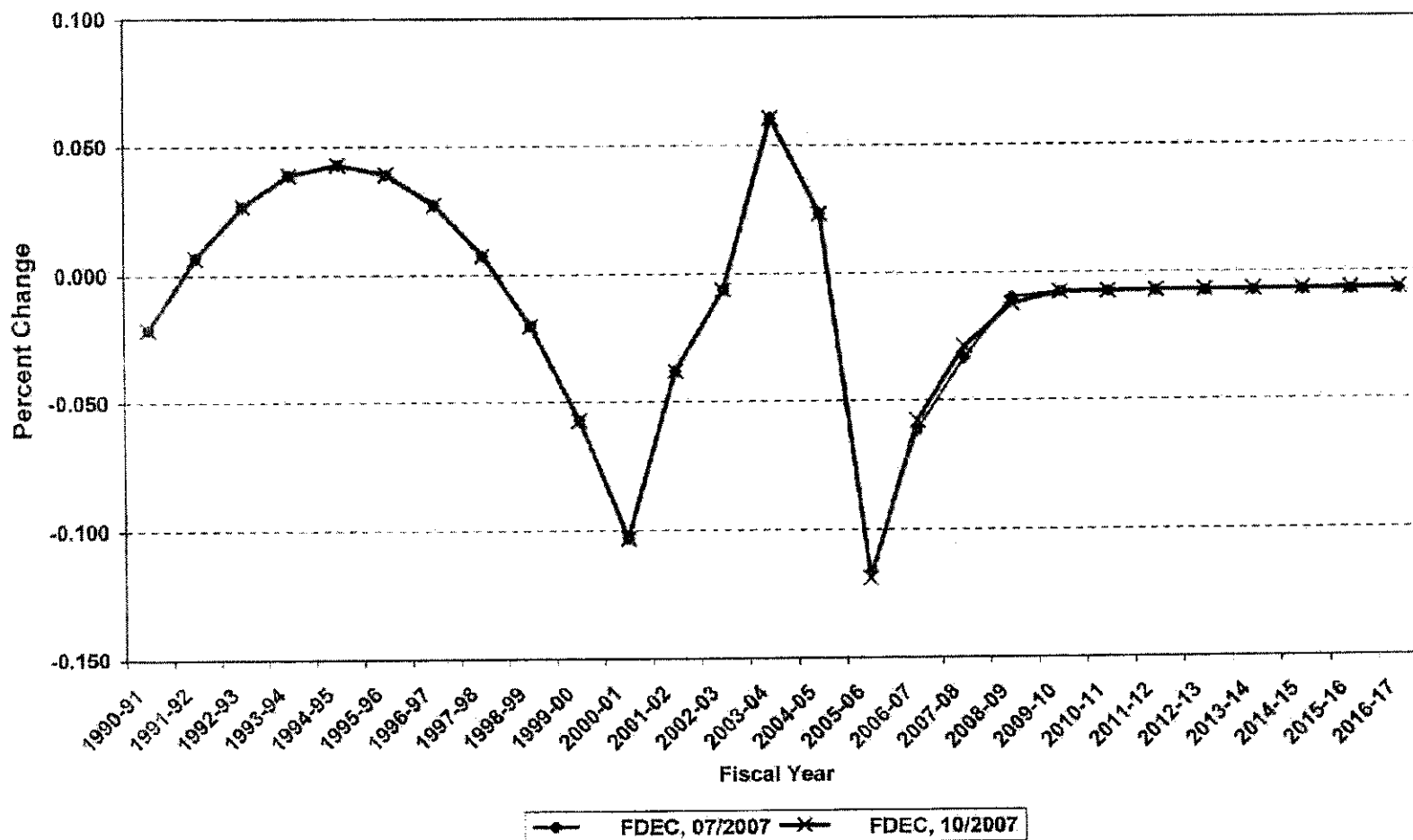
## Net Change In Florida Resident Households



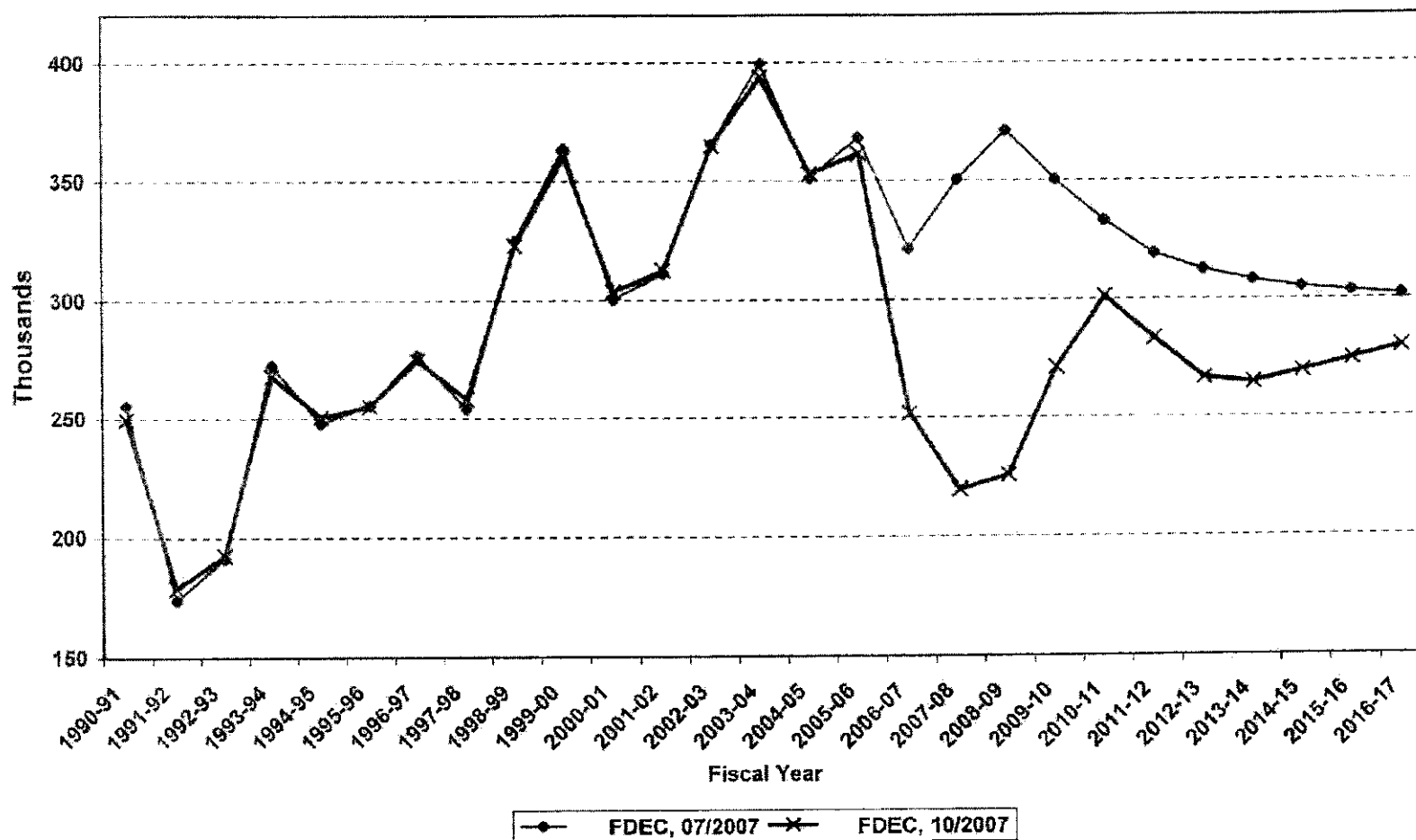
## Average Florida Household Size



## Growth In Average Florida Household Size

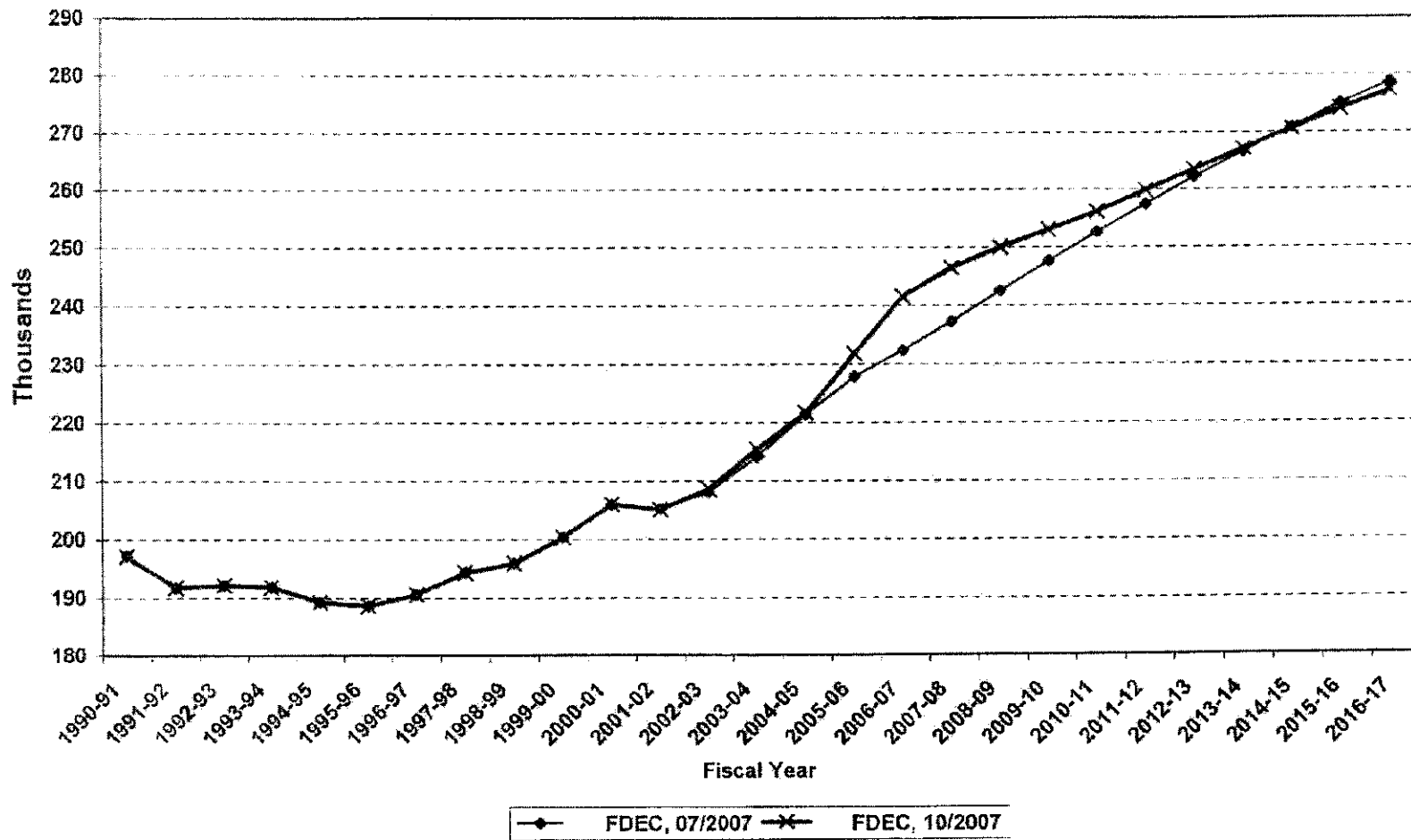


## Florida Net Migration

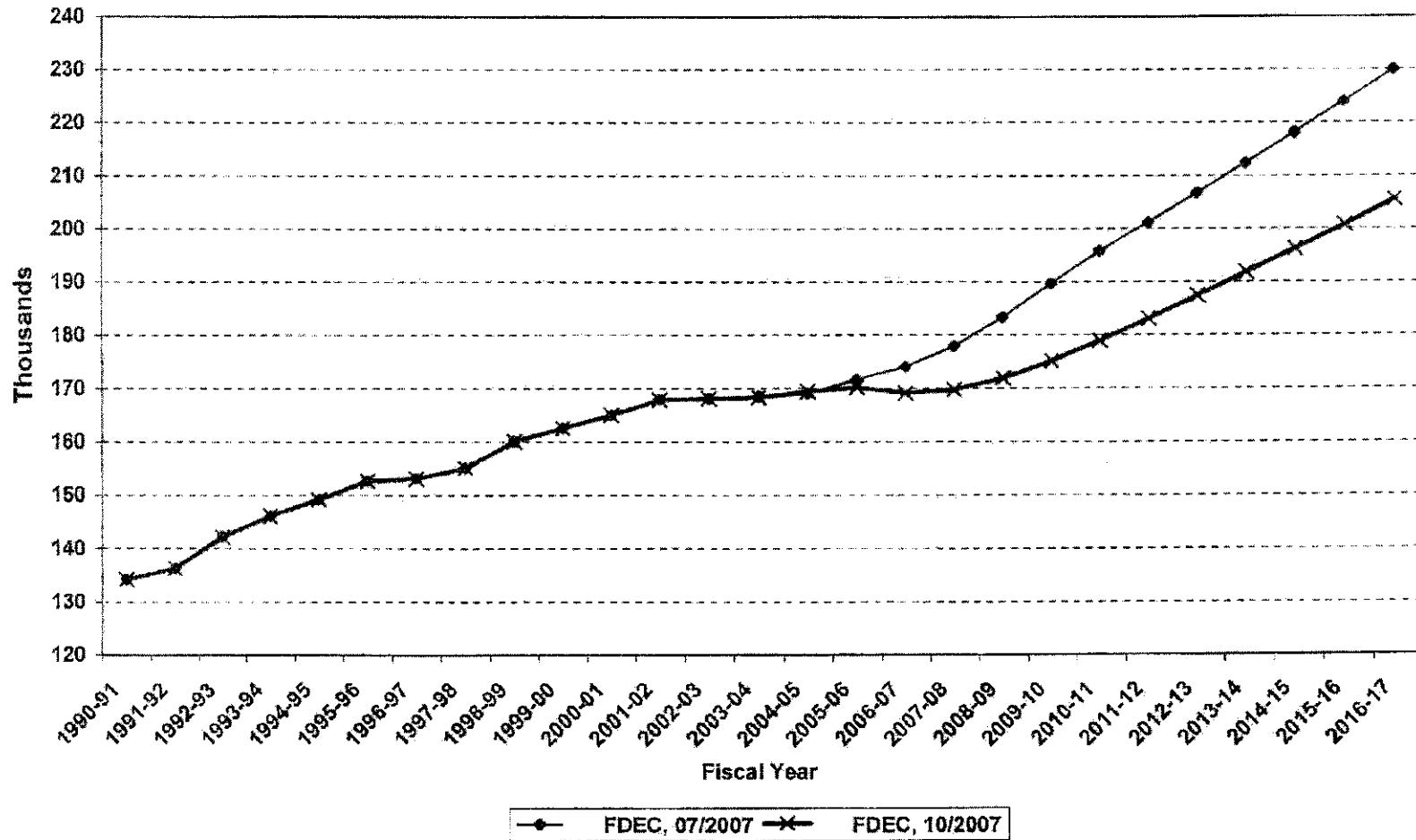




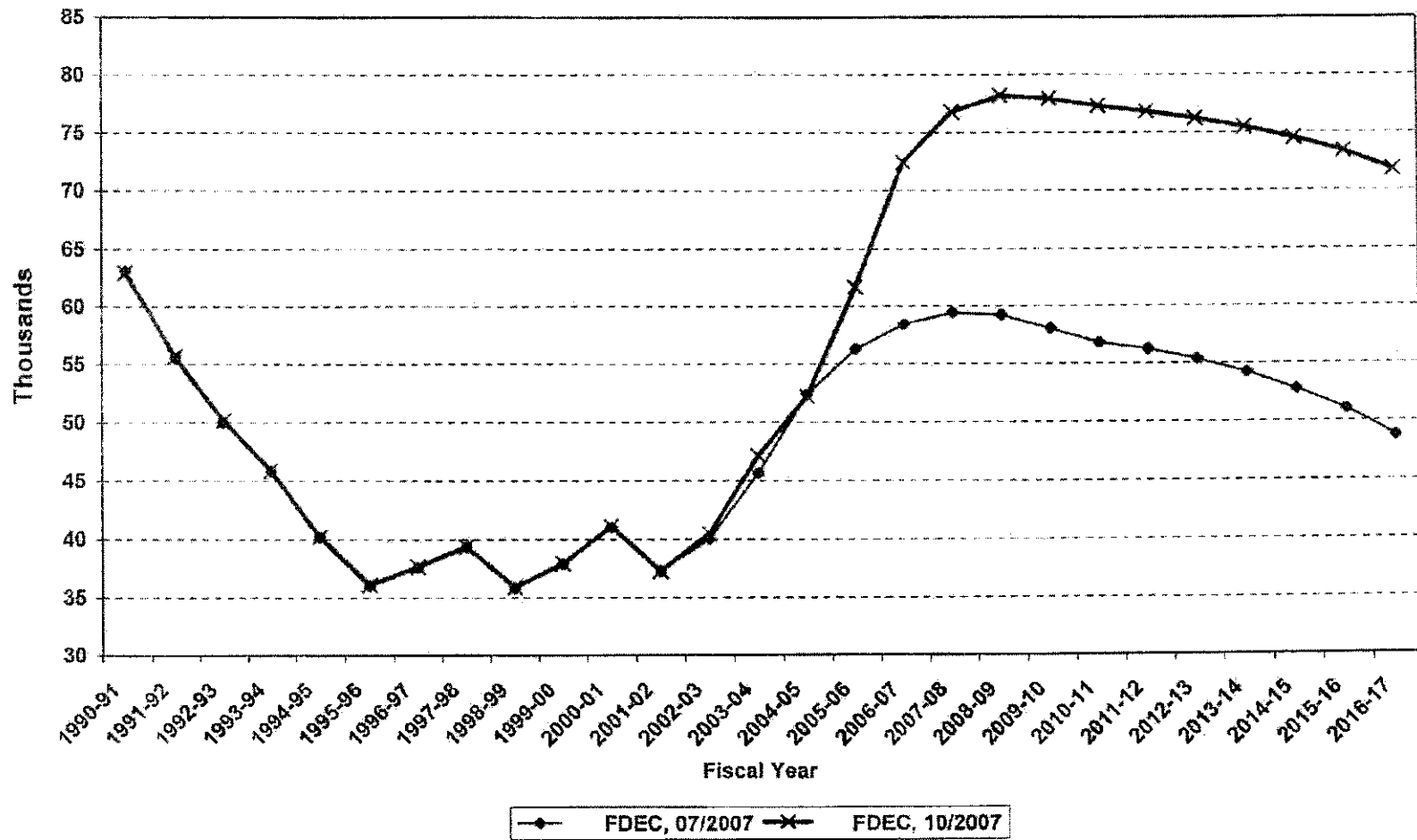
## Florida Resident Live Births



## Florida Resident Deaths



## Florida Net Natural Increase



## FLORIDA POPULATION AND COMPONENTS OF CHANGE

Fiscal Year	Population (end of FY)	Growth Rate	Annual Change in Population	Births	Deaths	Net Natural Increase	Net Migration
1950-51	2,980,000	6.05	170,000	67,604	27,186	40,418	129,582
1951-52	3,167,000	6.94	177,000	72,118	28,476	43,642	133,358
1952-53	3,310,000	4.85	153,000	77,156	29,856	47,300	105,700
1953-54	3,506,000	6.89	196,000	82,686	31,036	51,650	143,350
1954-55	3,747,000	6.90	242,000	86,265	32,083	54,182	187,818
1955-56	4,047,000	8.01	300,000	93,431	35,022	58,409	241,591
1956-57	4,372,000	8.03	325,000	100,811	38,319	62,492	262,508
1957-58	4,630,000	5.90	268,000	106,019	41,797	64,222	193,778
1958-59	4,808,000	3.84	178,000	110,457	43,746	66,711	111,289
1959-60	5,001,937	4.03	193,937	114,398	46,083	68,335	125,802
1960-61	5,185,560	3.67	183,623	116,419	48,302	68,117	116,506
1961-62	5,368,613	3.53	183,053	116,068	50,526	65,542	117,511
1962-63	5,552,114	3.42	183,501	114,946	54,302	60,644	122,857
1963-64	5,735,571	3.30	183,457	114,775	66,213	58,562	124,895
1964-65	5,884,060	2.59	148,479	110,465	57,868	52,597	95,882
1965-66	6,065,135	3.08	181,065	104,503	60,875	43,628	137,457
1966-67	6,250,236	3.05	185,101	101,129	62,765	38,364	146,737
1967-68	6,440,501	3.04	190,265	100,413	66,224	34,189	156,076
1968-69	6,632,001	2.97	191,500	104,362	71,133	33,229	158,271
1969-70	6,863,788	3.49	231,787	111,460	73,814	37,646	194,141
1970-71	7,233,605	5.39	369,817	117,071	75,362	41,709	328,108
1971-72	7,684,783	6.24	451,178	113,578	79,877	33,901	417,277
1972-73	8,157,779	6.15	472,996	107,692	86,284	21,408	451,588
1973-74	8,509,490	4.31	351,711	109,455	88,468	20,987	330,714
1974-75	8,650,224	1.65	140,734	108,752	87,185	21,567	119,167

## FLORIDA POPULATION AND COMPONENTS OF CHANGE

Fiscal Year	Population (end of FY)	Growth Rate	Annual Change in Population	Births	Deaths	Net Natural Increase	Net Migration
1975-76	8,783,174	1.64	132,950	103,859	88,170	15,689	117,281
1976-77	8,973,716	2.17	190,542	107,735	90,432	17,303	173,239
1977-78	9,226,396	2.82	262,680	112,266	83,372	18,893	233,787
1978-79	9,519,160	3.17	292,764	116,269	96,826	19,443	273,321
1979-80	9,843,544	3.41	324,384	126,759	100,958	25,801	298,683
1980-81	10,218,346	3.81	374,802	135,511	107,886	27,825	346,977
1981-82	10,492,578	2.68	274,232	141,562	108,533	33,029	241,203
1982-83	10,750,266	2.46	257,688	146,890	110,534	36,356	221,332
1983-84	11,066,812	2.94	315,546	151,660	113,967	37,703	277,843
1984-85	11,405,171	3.07	339,359	159,879	117,469	42,410	296,949
1985-86	11,740,597	2.94	335,426	165,837	122,536	43,301	292,125
1986-87	12,083,205	2.92	342,608	170,743	124,846	45,897	296,711
1987-88	12,410,087	2.71	326,882	179,610	129,473	50,137	276,746
1988-89	12,723,453	2.53	313,366	188,272	131,997	56,275	257,091
1989-90	13,019,674	2.33	296,121	197,265	132,461	64,804	231,317
1990-91	13,323,139	2.33	303,565	197,197	134,147	63,050	240,516
1991-92	13,552,830	1.72	229,691	191,702	136,199	55,503	174,188
1992-93	13,804,917	1.86	252,087	192,150	142,167	49,983	202,104
1993-94	14,118,146	2.27	313,228	191,833	148,063	46,770	267,468
1994-95	14,407,012	2.06	288,867	189,272	149,127	40,145	248,722
1995-96	14,701,478	2.04	294,466	188,601	162,628	35,973	258,493
1996-97	15,010,271	2.10	308,793	190,562	163,018	37,534	271,269
1997-98	15,312,639	2.01	302,368	194,306	155,044	39,261	263,107
1998-99	15,680,103	2.40	367,464	196,827	160,050	36,777	331,687
1999-00	16,072,926	2.51	392,823	200,271	162,446	37,825	354,998

## FLORIDA POPULATION AND COMPONENTS OF CHANGE

Fiscal Year	Population (end of FY)	Growth Rate	Annual Change in Population	Births	Deaths	Net Natural Increase	Net Migration
2000-01	16,414,441	2.12	341,515	206,898	164,901	40,997	300,518
2001-02	16,769,060	2.16	354,619	205,117	167,860	37,257	317,362
2002-03	17,184,076	2.47	415,016	207,979	168,011	39,968	375,048
2003-04	17,620,216	2.54	436,140	214,032	168,432	45,600	390,540
2004-05	18,026,110	2.30	405,894	221,551	169,343	52,208	353,886
2005-06	18,440,700	2.30	414,590	231,737	170,109	61,628	362,962
2006-07	18,755,570	1.71	314,870	241,442	169,032	72,410	242,460
2007-08	19,051,540	1.58	295,970	246,417	169,676	76,741	218,229
2008-09	19,358,740	1.61	307,200	249,909	171,759	78,150	229,050
2009-10	19,713,670	1.83	354,830	252,864	174,973	77,891	276,939
2010-11	20,091,110	1.92	377,540	255,999	178,745	77,254	300,286
2011-12	20,448,173	1.78	357,063	259,886	182,931	76,955	290,308
2012-13	20,789,282	1.67	341,109	263,367	187,222	76,145	264,964
2013-14	21,129,110	1.63	339,828	267,050	191,635	75,415	264,413
2014-15	21,473,247	1.63	344,137	270,823	196,129	74,694	269,643
2015-16	21,821,232	1.62	347,985	273,988	200,655	73,333	274,652
2016-17	22,172,833	1.61	351,601	277,153	205,401	71,752	279,849
2017-18	22,526,846	1.60	354,013	280,088	210,326	69,762	284,251
2018-19	22,882,161	1.58	355,315	282,864	215,447	67,407	287,908
2019-20	23,232,438	1.53	350,277	285,491	220,738	64,753	285,524
2020-21	23,568,388	1.45	336,950	288,039	226,219	61,820	274,130
2021-22	23,892,316	1.37	323,927	290,461	232,090	58,371	265,566
2022-23	24,211,576	1.34	319,261	292,822	238,268	54,554	264,707
2023-24	24,528,812	1.31	317,236	295,137	244,696	50,441	266,796
2024-25	24,845,020	1.29	316,208	297,439	251,456	45,983	270,225

## FLORIDA POPULATION AND COMPONENTS OF CHANGE

Fiscal Year	Population (end of FY)	Growth Rate	Annual Change in Population	Births	Deaths	Net Natural Increase	Net Migration
2025-26	25,158,349	1.26	313,329	299,705	258,510	41,096	272,233
2026-27	25,465,500	1.22	307,151	302,131	266,086	36,046	271,105
2027-28	25,765,706	1.18	300,206	304,615	273,632	30,983	269,223
2028-29	26,059,344	1.14	293,638	307,071	281,366	25,706	267,933
2029-30	26,347,095	1.10	287,751	309,514	289,340	20,174	267,577

## FLORIDA POPULATION

---

### AVERAGE ANNUAL GROWTH

HISTORY (1980 to 2007)	330,867	2.4%
HISTORY (1990 to 2007)	337,782	2.2%
Based on November Population (2008 to 2017)	345,223	1.7%

### HISTORY

---

		Growth	
		Absolute	%
1980	9,746,961	368,682	3.9%
1981	10,110,616	363,655	3.7%
1982	10,403,778	293,162	2.9%
1983	10,678,494	274,716	2.6%
1984	10,965,170	286,676	2.7%
1985	11,272,327	307,157	2.8%
1986	11,587,219	314,892	2.8%
1987	11,916,377	329,158	2.8%
1988	12,231,270	314,893	2.6%
1989	12,547,730	316,460	2.6%
1990	12,938,071	390,341	3.1%
1991	13,258,732	320,661	2.5%
1992	13,497,541	238,809	1.8%
1993	13,730,115	232,574	1.7%
1994	14,043,757	313,642	2.3%
1995	14,335,992	292,235	2.1%
1996	14,623,421	287,429	2.0%
1997	14,938,314	314,893	2.2%
1998	15,230,421	292,107	2.0%
1999	15,580,244	349,823	2.3%
2000	15,982,824	402,580	2.6%
2001	16,330,224	347,400	2.2%
2002	16,674,608	344,384	2.1%
2003	17,071,508	396,900	2.4%
2004	17,516,732	445,224	2.6%
2005	17,918,227	401,495	2.3%
2006	18,349,132	430,905	2.4%
2007	18,680,367	331,235	1.8%



**FORECAST**

---

	November		
	Population		<u>Growth</u>
	<u>Forecast</u>	<u>Absolute</u>	<u>%</u>
2008	18,977,820	297,453	1.6%
2009	19,278,665	300,845	1.6%
2010	19,620,532	341,867	1.8%
2011	19,997,465	376,933	1.9%
2012	20,360,750	363,285	1.8%
2013	20,704,460	343,710	1.7%
2014	21,043,860	339,400	1.6%
2015	21,386,860	343,000	1.6%
2016	21,733,970	347,110	1.6%
2017	22,084,825	350,855	1.6%