

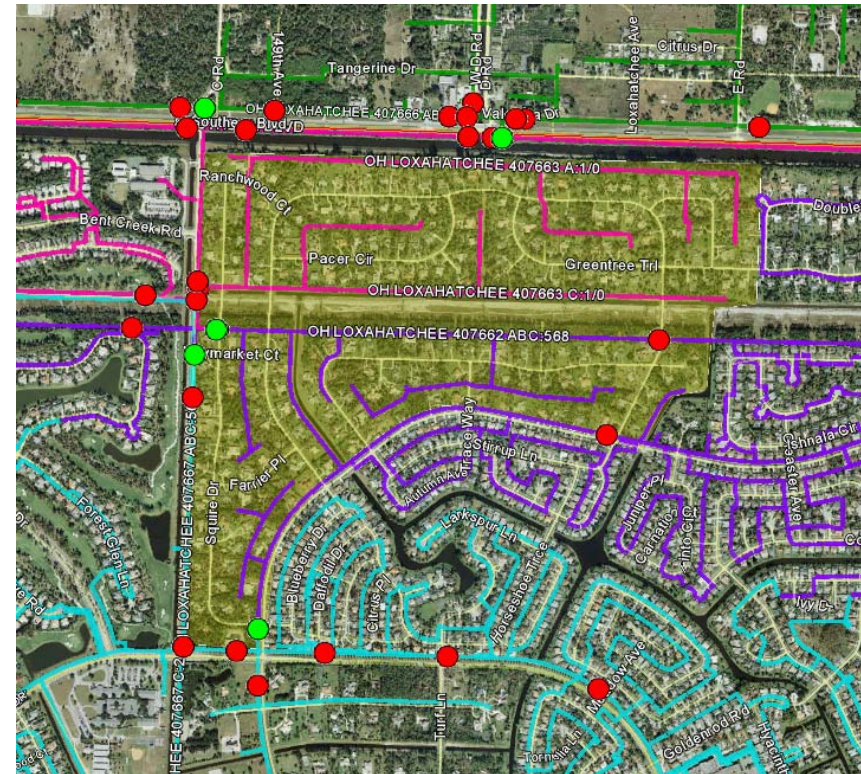


## SSUP Areas

**SSUP will begin piloting Option 2.5 now in four key areas to ensure that it will achieve intended results before we reach full deployment of the long term program**

## East/North Region - Wellington

- **Area Details**
  - Estimated cost \$3.9 MM
  - 5.15 OH miles
  - 7 laterals
  - 216 customers
- **Area Description**
  - Most laterals are in back yards
  - Heavy vegetation area
  - Very inaccessible
  - Extended outages in Matthew and Irma



**Concentrating on a small area like this will allow us to test our assumptions before we finalize long term deployment methodology**

**SSUP will begin piloting Option 2.5 now in four key areas to ensure that it will achieve intended results before we reach full deployment of the long term program**

## **East/North - Palm Beach Gardens “Cabana Colony”**

- **Area Details**
  - Estimated cost \$4.4 MM
  - 5.54 OH miles
  - 7 laterals
  - 565 customers
- **Area Description**
  - All laterals are in back yards
  - High density area
  - Open wire secondary throughout entire area



**Concentrating on a small area like this will allow us to test our assumptions before we finalize long term deployment methodology**



**SSUP will begin piloting Option 2 now in four key areas to ensure that it will achieve intended results before we reach full deployment of the long term program**

## **Naples – Pine Ridge Sub – Naples Park Area<sup>(1)</sup>**

- **Area Details**
  - Estimated cost \$13 MM
  - 16 OH miles
  - 39 laterals
  - 3,719 customers
- **Area Description**
  - All laterals are in back yards
  - High density area
  - Highly inaccessible with our equipment
  - Extended investigation and restoration times



**Concentrating on a small area like this will allow us to test our assumptions before we finalize long term deployment methodology**

1) This area is much larger than other pilot areas. Will begin on one side and likely only complete a portion of the total area during the pilot. The remaining area will be completed at the onset of our full program deployment in 2021.

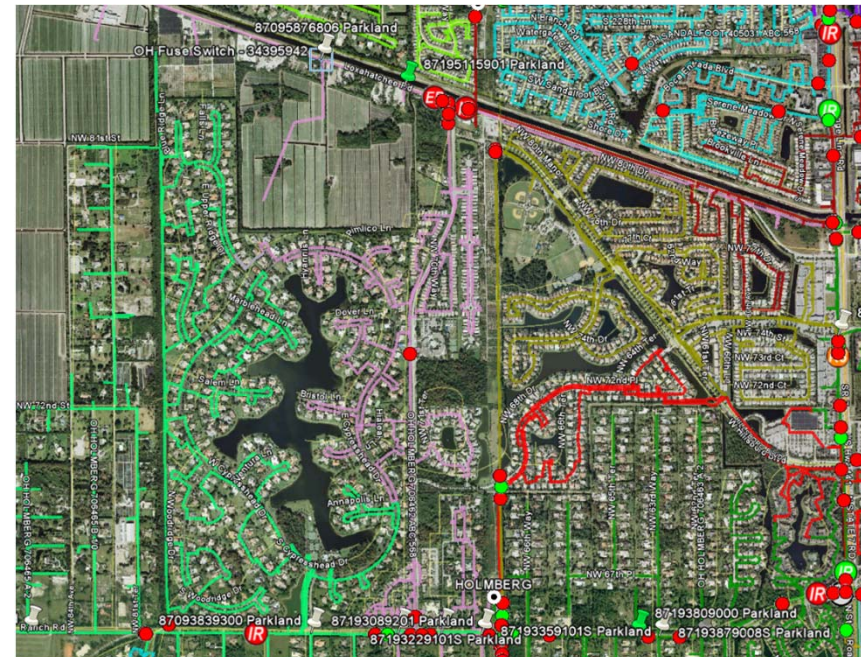


CHANGING THE CURRENT. **FPL**

**SSUP will begin piloting Option 2.5 now in four key areas to ensure that it will achieve intended results before we reach full deployment of the long term program**

## **North Broward (Pompano) – Parkland**

- **Area Details**
  - Estimated cost \$4.8 MM
  - 5.85 OH miles
  - 12 laterals
  - 491 customers
- **Area Description**
  - Many outages in area
  - Heavy vegetation area
  - Highly inaccessible with our equipment
  - Extended investigation and restoration times



**Concentrating on a small area like this will allow us to test our assumptions before we finalize long term deployment methodology**