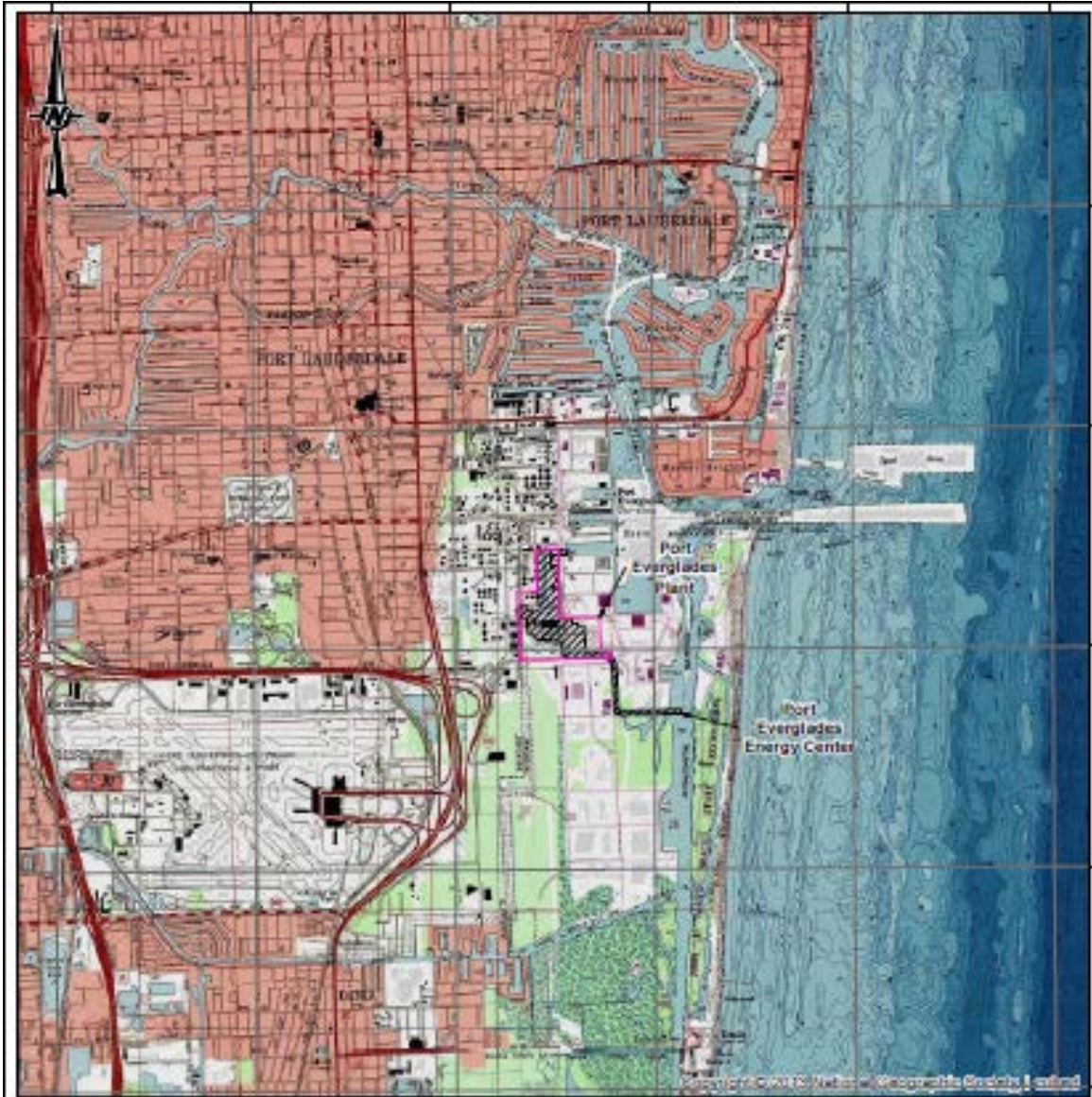


***Environmental and Land Use Information:
Supplemental Information***

***Preferred Site #1: Port Everglades Plant,
Broward County***

(This page is left intentionally blank.)



LEGEND
 Port Everglades Plant
 Port Everglades Energy Center



REFERENCE(S)
 COORDINATE SYSTEM: NAD 83 STATEPLANS FLORIDA EAST FIPS 5001 FEET
 PROJECTION: TRANSVERSE MERCATOR
 DATUM: NORTH AMERICAN 1983

CLIENT
 FPL

PROJECT
 PORT EVERGLADES ENERGY CENTER

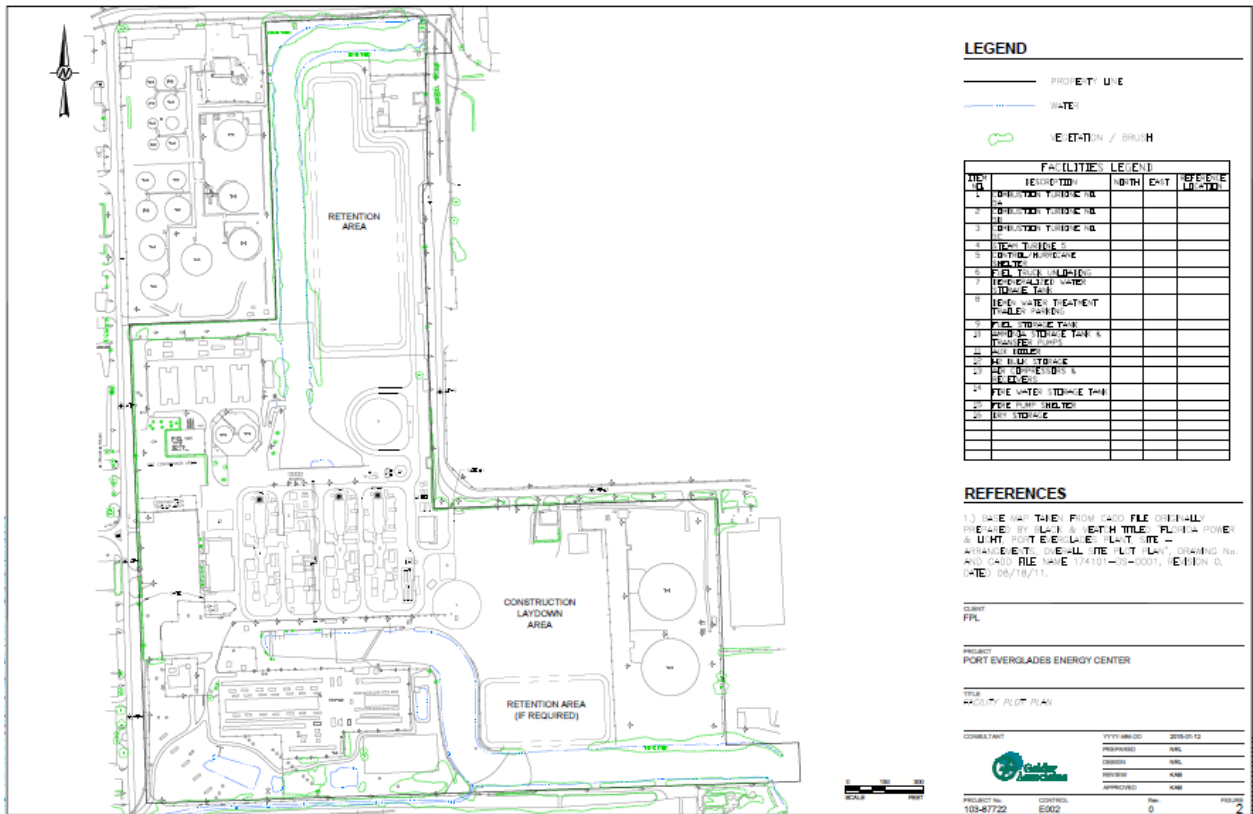
TITLE
 USGS LOCATION MAP

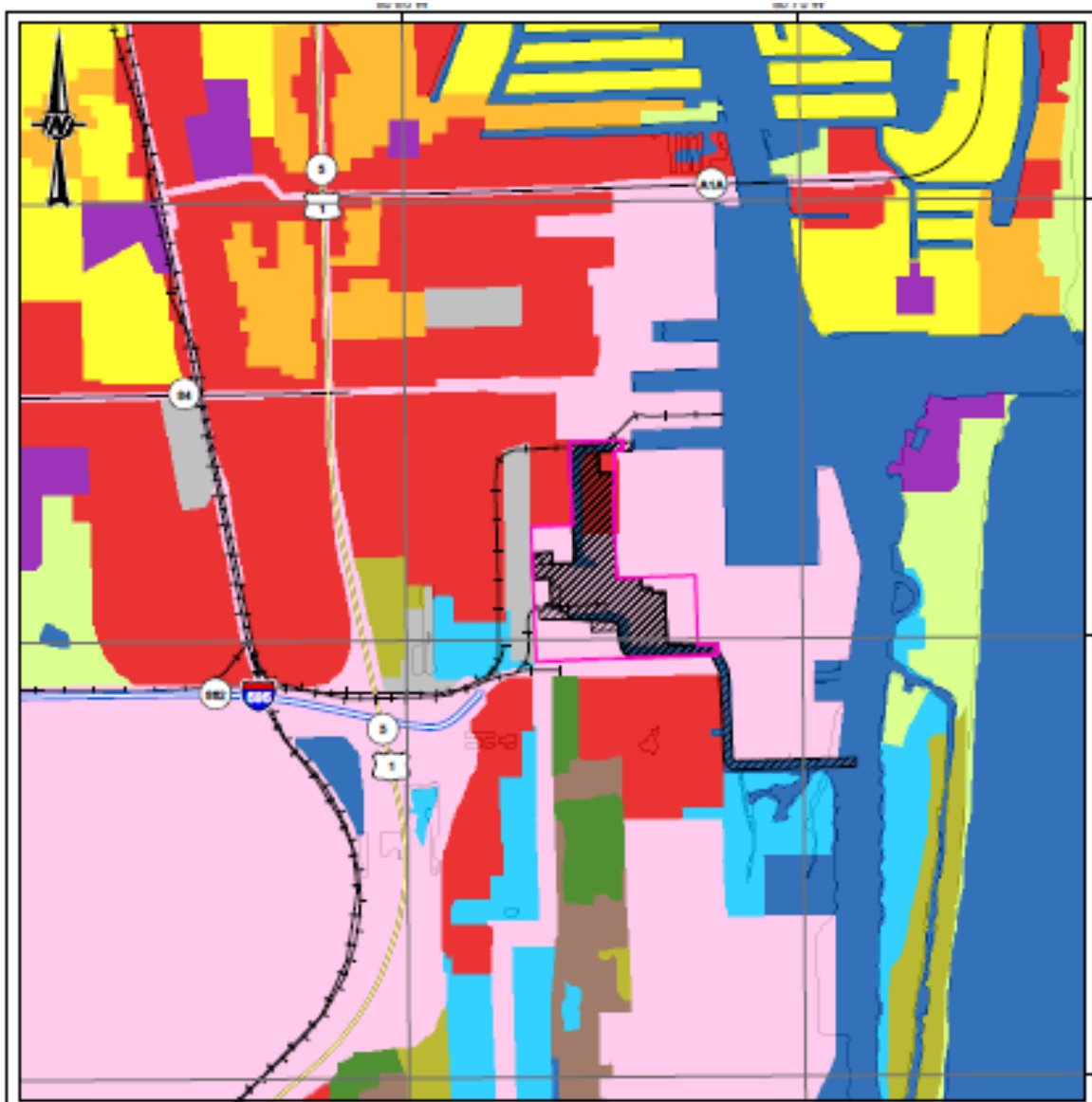
CONSULTANT



DATE	2018-05-13
DESIGNED	NPL
PREPARED	NPL
REVIEWED	KAB
APPROVED	KAB

PROJECT NO.	CONTROL	REV	ISSUED
100-81722	8001	0	1





- LEGEND**
- Port Everglades Energy Center Site
 - Port Everglades Plant Property
 - 2008 Land Use (2008)
 - Medium Density Urban
 - High Density Urban
 - Commercial
 - Industrial
 - Institutional
 - Recreational
 - Open Land
 - Rangeland
 - Upland Forests
 - Water
 - Wetlands
 - Transportation, Communication, Utilities

CLIENT
FPL

PROJECT
PORT EVERGLADES ENERGY CENTER

TITLE
LAND USE / LAND COVER MAP



CONSULTANT	YYYY-MM-DD	2018-01-12
DESIGNED	NRL	
PREPARED	NRL	
REVIEWED	KAB	
APPROVED	KAB	

REFERENCES
COORDINATE SYSTEM: NAD 1983 STATEPLANE FLORIDA EAST FIPS 8201 FEET
PROJECT CEN TRANSVERSE MERCATOR
DATUM: NORTH AMERICAN 1983

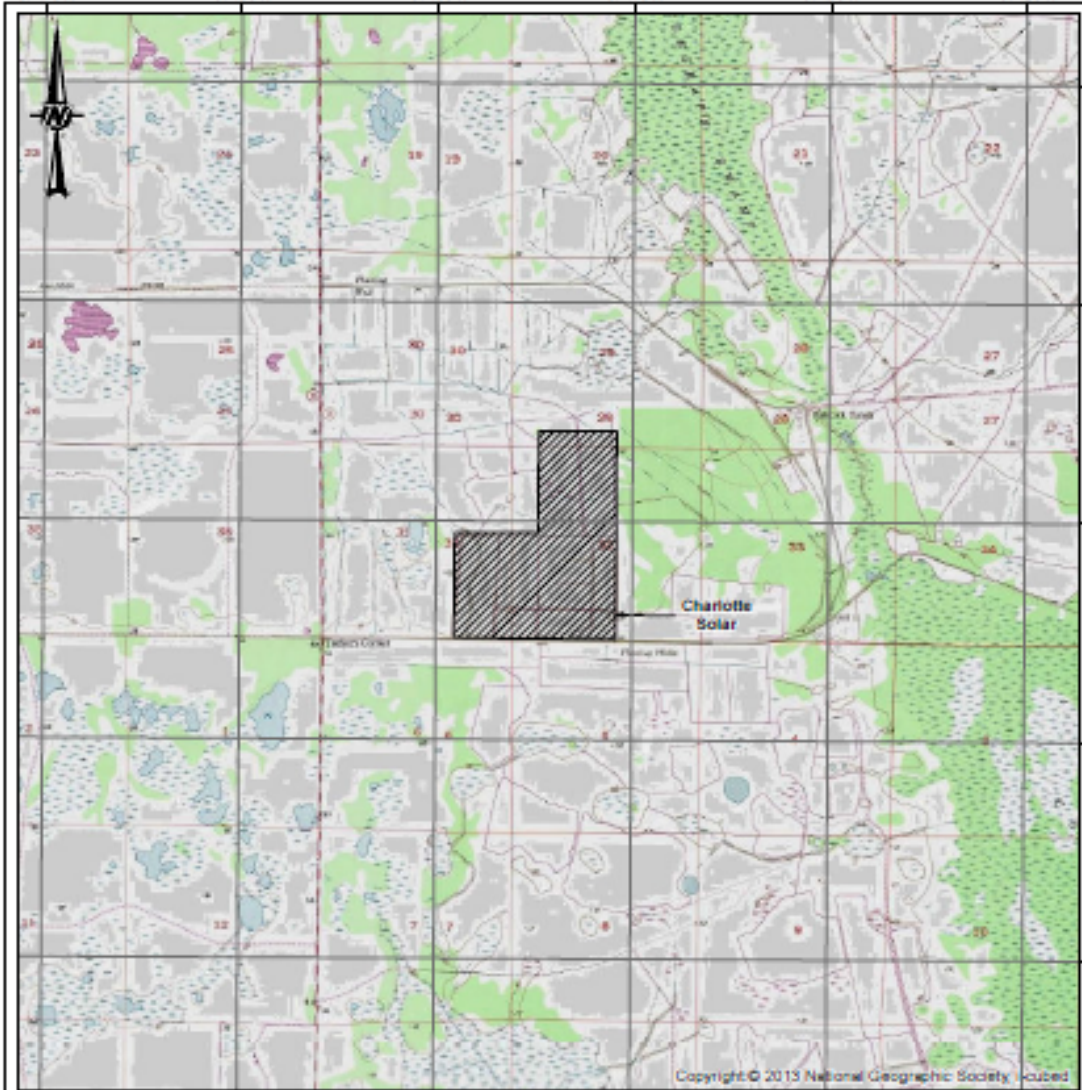
PROJECT NO: 100-87722 CONTROL: 8008 REV: 0 SHEET: 3

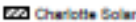


(This page is left intentionally blank.)

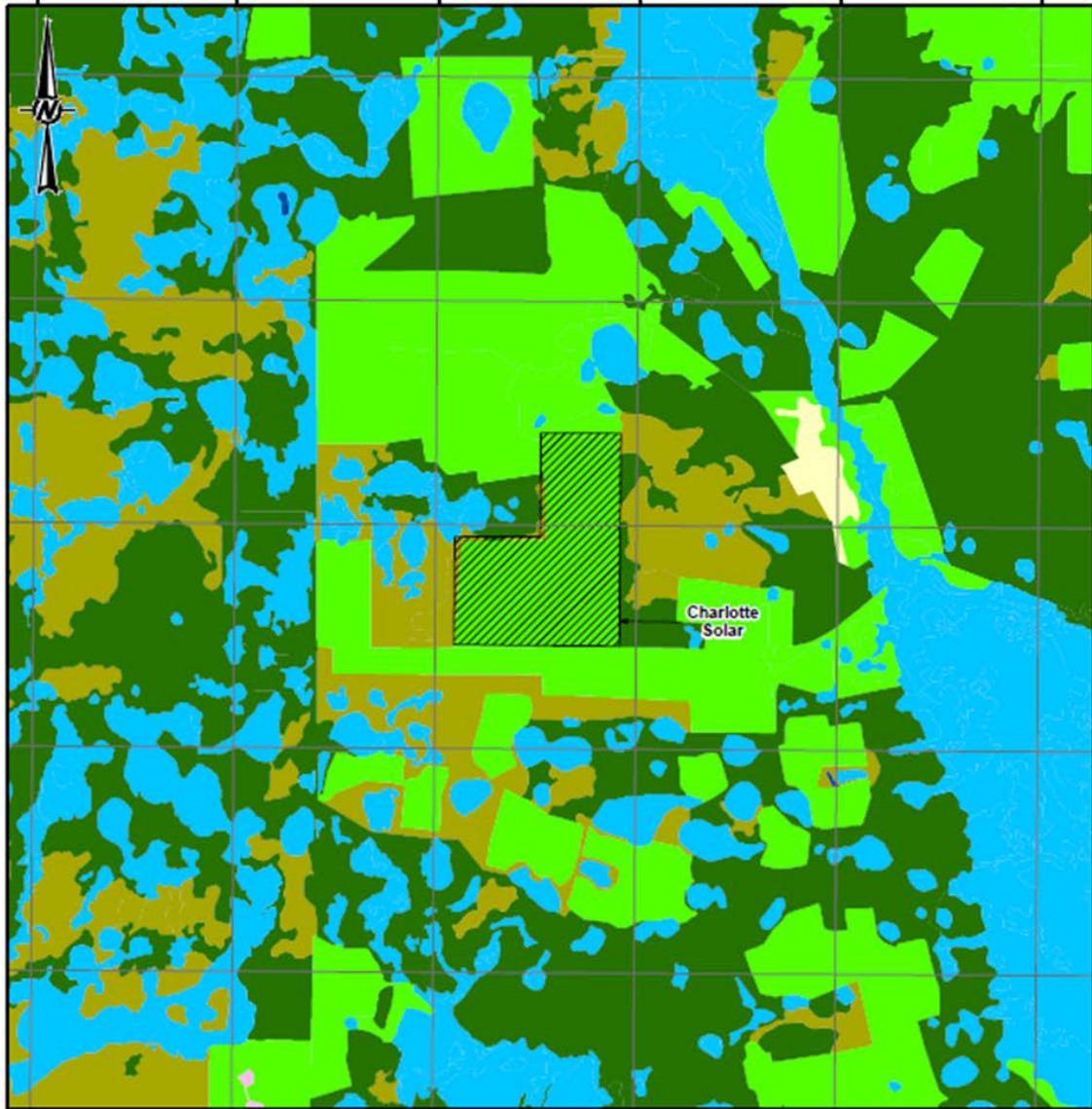
***Environmental and Land Use Information:
Supplemental Information***

***Preferred Site #2: Babcock Ranch Solar Energy Center,
Charlotte County***

(This page is left intentionally blank.)



<p>USGS  Charlotte Solar</p>  <p>0 2,000 4,000 8,000 Feet</p> <p>REFERENCES COORDINATE SYSTEM: NAD 1983 STATEPLANE FLORIDA EAST FIPS 0501 F80T PROJECT COIL TRANSVERSE MERCATOR DATUM: NORTH AMERICAN 1983</p>	<p>CLIENT FPL</p> <hr/> <p>PROJECT CHARLOTTE SOLAR</p> <hr/> <p>TITLE USGS LOCATION MAP</p> <hr/> <p>CONSULTANT </p>	<table border="0"> <tr> <td>YYYYMMDD</td> <td>2018-01-12</td> </tr> <tr> <td>DESIGNED</td> <td>NRL</td> </tr> <tr> <td>PREPARED</td> <td>NRL</td> </tr> <tr> <td>REVIEWED</td> <td>KAB</td> </tr> <tr> <td>APPROVED</td> <td>KAB</td> </tr> </table>	YYYYMMDD	2018-01-12	DESIGNED	NRL	PREPARED	NRL	REVIEWED	KAB	APPROVED	KAB
YYYYMMDD	2018-01-12											
DESIGNED	NRL											
PREPARED	NRL											
REVIEWED	KAB											
APPROVED	KAB											
<p>PROJECT NO. 103-87722 COIL NO. 8004 REV. 0</p>		<p>FIGURE 1</p>										



LEGEND

Charlotte Solar	Open Land
SFWMDC Land Use (2008)	Agriculture
Low Density Urban	Rangeland
Medium Density Urban	Upland Forests
High Density Urban	Water
Commercial	Wetlands
Industrial	Barren Land
Mining	Transportation, Communication, Utilities
Institutional	
Recreational	

0 2,000 4,000 8,000
Feet

REFERENCE(S)
 COORDINATE SYSTEM: NAD 1983 STATEPLANE FLORIDA EAST FIPS 0901 FEET
 PROJECTION: TRANSVERSE MERCATOR
 DATUM: NORTH AMERICAN 1983

CLIENT
FPL

PROJECT
CHARLOTTE SOLAR

TITLE
LAND USE / LAND COVER MAP

CONSULTANT

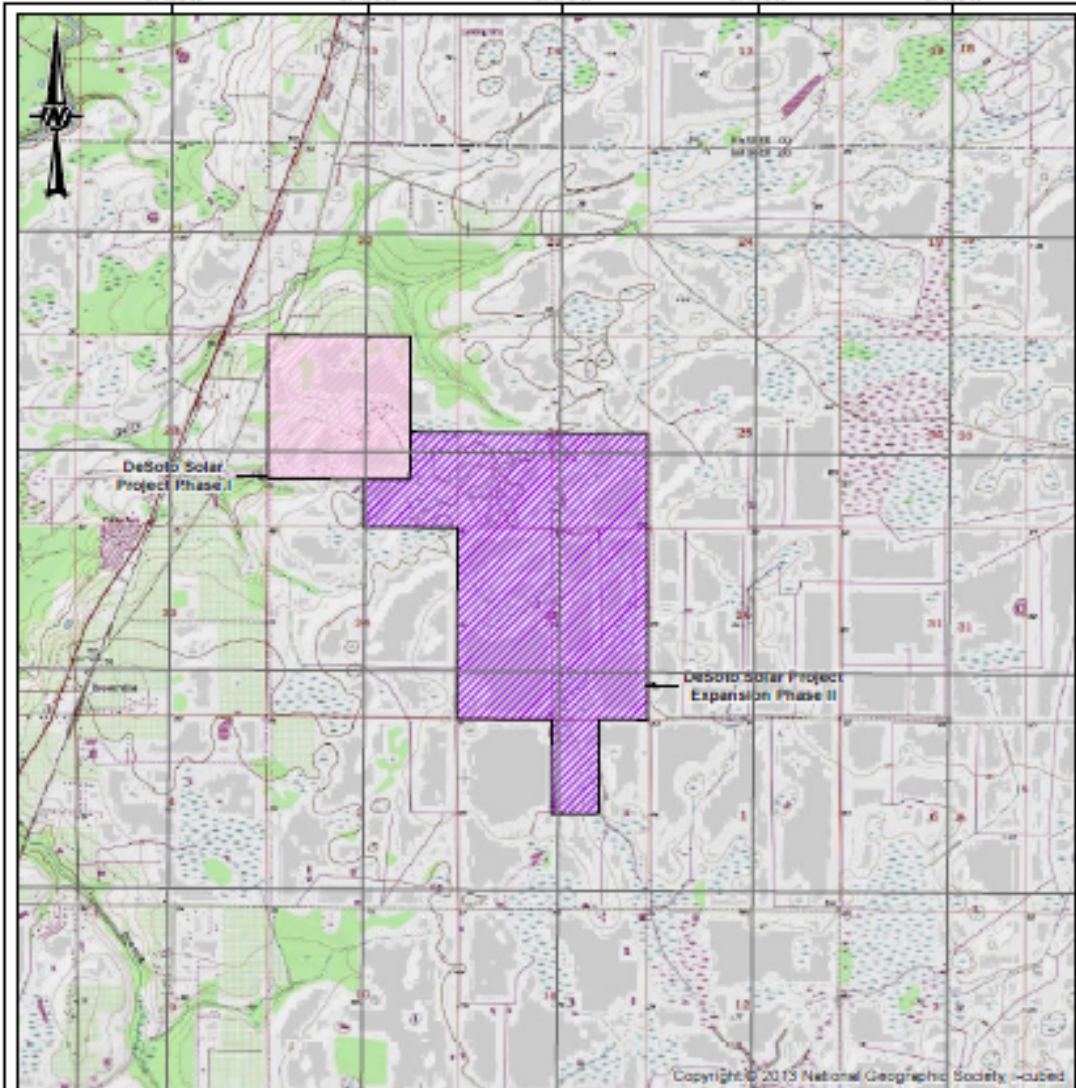
	YYYY-MM-DD	2015-01-13
	DESIGNED	NRL
	PREPARED	NRL
	REVIEWED	KAB
	APPROVED	KAB

PROJECT NO. 103-87722	CONTROL E006	REV. 0	FIGURE 2
--------------------------	-----------------	-----------	-------------

***Environmental and Land Use Information:
Supplemental Information***

***Preferred Site #3: Citrus Solar Energy Center,
DeSoto County***

(This page is left intentionally blank.)



LEGEND

- DeSoto Solar Project Phase I
- DeSoto Solar Project Expansion Phase II



REFERENCE(S)
 COORDINATE SYSTEM: NAD 1983 STATEPLANE FLORIDA EAST FIPS 3201 F88T
 PROJECTION: TRANSVERSE MERCATOR
 DATUM: NORTH AMERICAN 1983

CLIENT
 FPL

PROJECT
 DEBOTO SOLAR EXPANSION

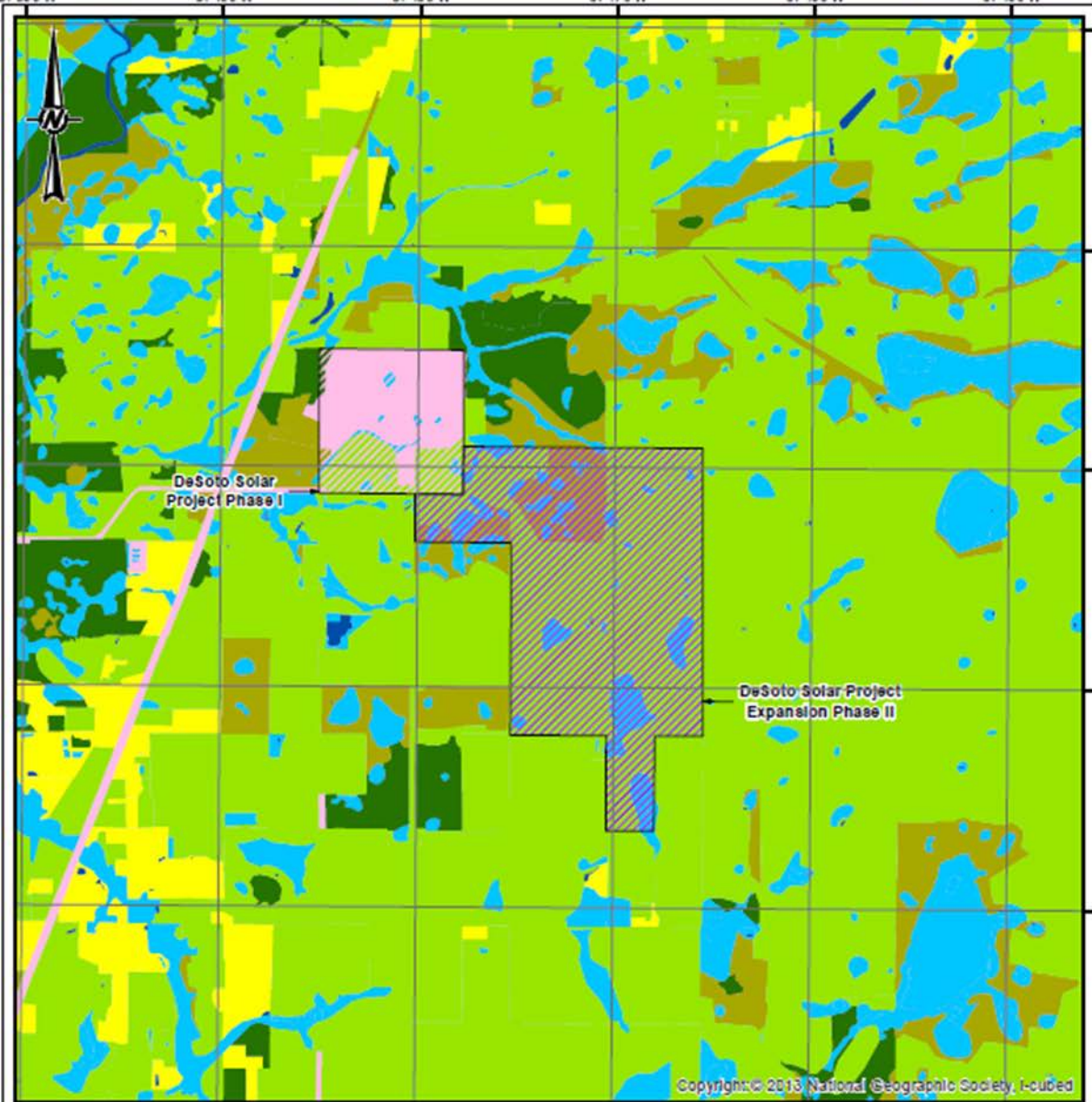
TITLE
 USGS LOCATION MAP

CONSULTANT



YYYY-MM-DD	2013-01-12
DESIGNED	NPL
PREPARED	NPL
REVIEWED	KAB
APPROVED	KAB

PROJECT NO. 123-8772 CONTROL NO. 8612 REV. 0 PAGES 1



Copyright © 2013 National Geographic Society. Included

LEGEND

- DeSoto Solar Project Phase I
- DeSoto Solar Project Expansion Phase II
- SWFWMD Land Use (2011)
- Urban
- Agriculture
- Upland Non-Forested
- Forests
- Water
- Wetlands
- Transportation, Communication, Utilities



REFERENCE(S)
 COORDINATE SYSTEM: NAD 1983 STATEPLANE FLORIDA EAST FIPS 0901 FEET
 PROJECTION: TRANSVERSE MERCATOR
 DATUM: NORTH AMERICAN 1983

CLIENT
 FPL

PROJECT
 DESOTO SOLAR EXPANSION

TITLE
 LAND USE / LAND COVER MAP

CONSULTANT



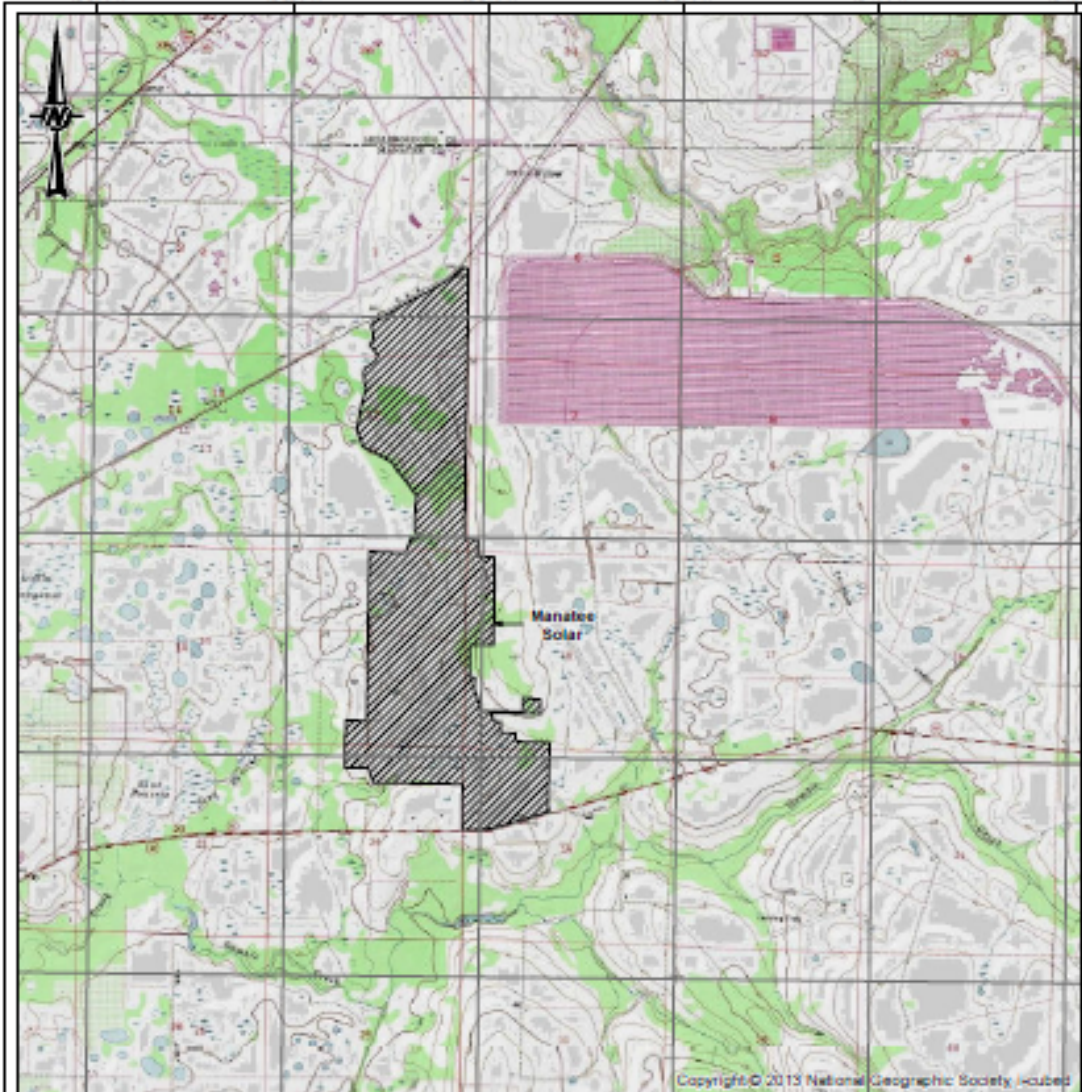
YYYY-MM-DD	2015-01-12
DESIGNED	NRL
PREPARED	NRL
REVIEWED	KAB
APPROVED	KAB

PROJECT NO.	CONTROL	REV.	FIGURE
103-87722	ED12	0	2

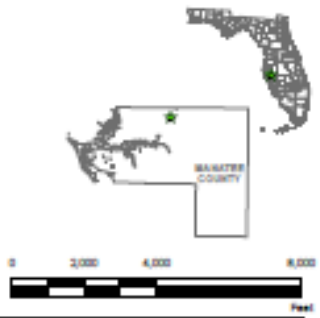
***Environmental and Land Use Information:
Supplemental Information***

***Preferred Site #4: Manatee Solar Energy Center,
Manatee County***

(This page is left intentionally blank.)



LEGEND
 [Hatched Box] Manatee Solar



CLIENT
 FPL

PROJECT
 MANATEE SOLAR

TITLE
 USGS LOCATION MAP

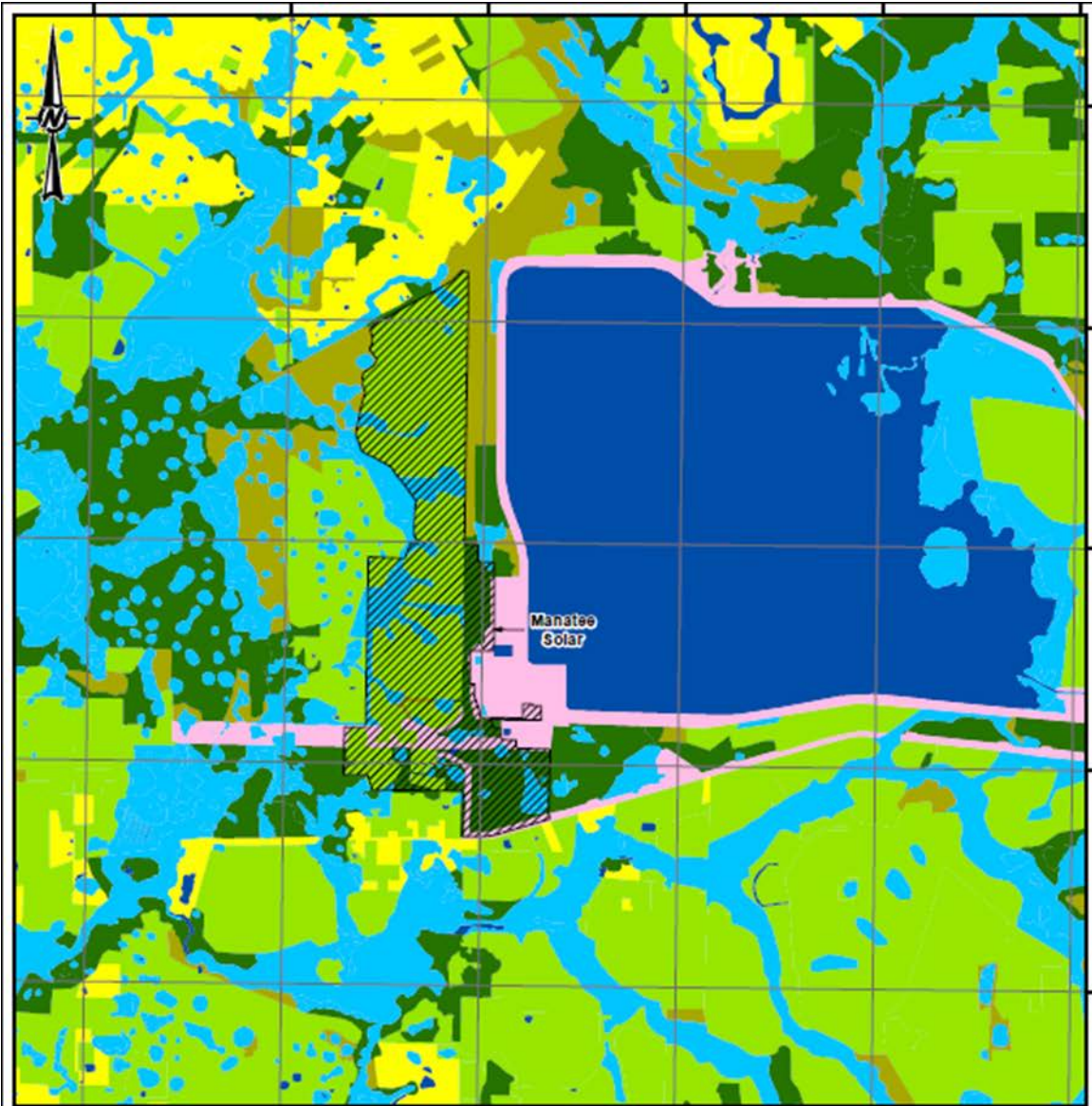
CONSULTANT



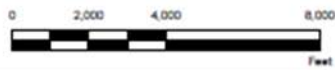
DATE	2018-01-12
DESIGNED	NPL
DRAWN	NPL
REVIEWED	KAB
APPROVED	KAB

REVISION(S)
 COORDINATE SYSTEM: NAD 1983 STATEPLANE FLORIDA EAST FIPS 5001 F88T
 PROJECT ON TRANSVERSE MERCATOR
 DATUM: NORTH AMERICAN 1983

PROJECT NO. 103-87722 CONTROL 8013 REV 0 SHEET 1



- LEGEND
- Manatee Solar
 - SWFWMD Land Use (2011)**
 - Urban
 - Agriculture
 - Upland Non-Forested
 - Forests
 - Water
 - Wetlands
 - Barren Land
 - Transportation, Communication, Utilities



REFERENCE(S)
 COORDINATE SYSTEM: NAD 1983 STATEPLANE FLORIDA EAST FIPS 0901 FEET
 PROJECTION: TRANSVERSE MERCATOR
 DATUM: NORTH AMERICAN 1983

CLIENT
 FPL

PROJECT
 MANATEE SOLAR

TITLE
 LAND USE / LAND COVER MAP

CONSULTANT



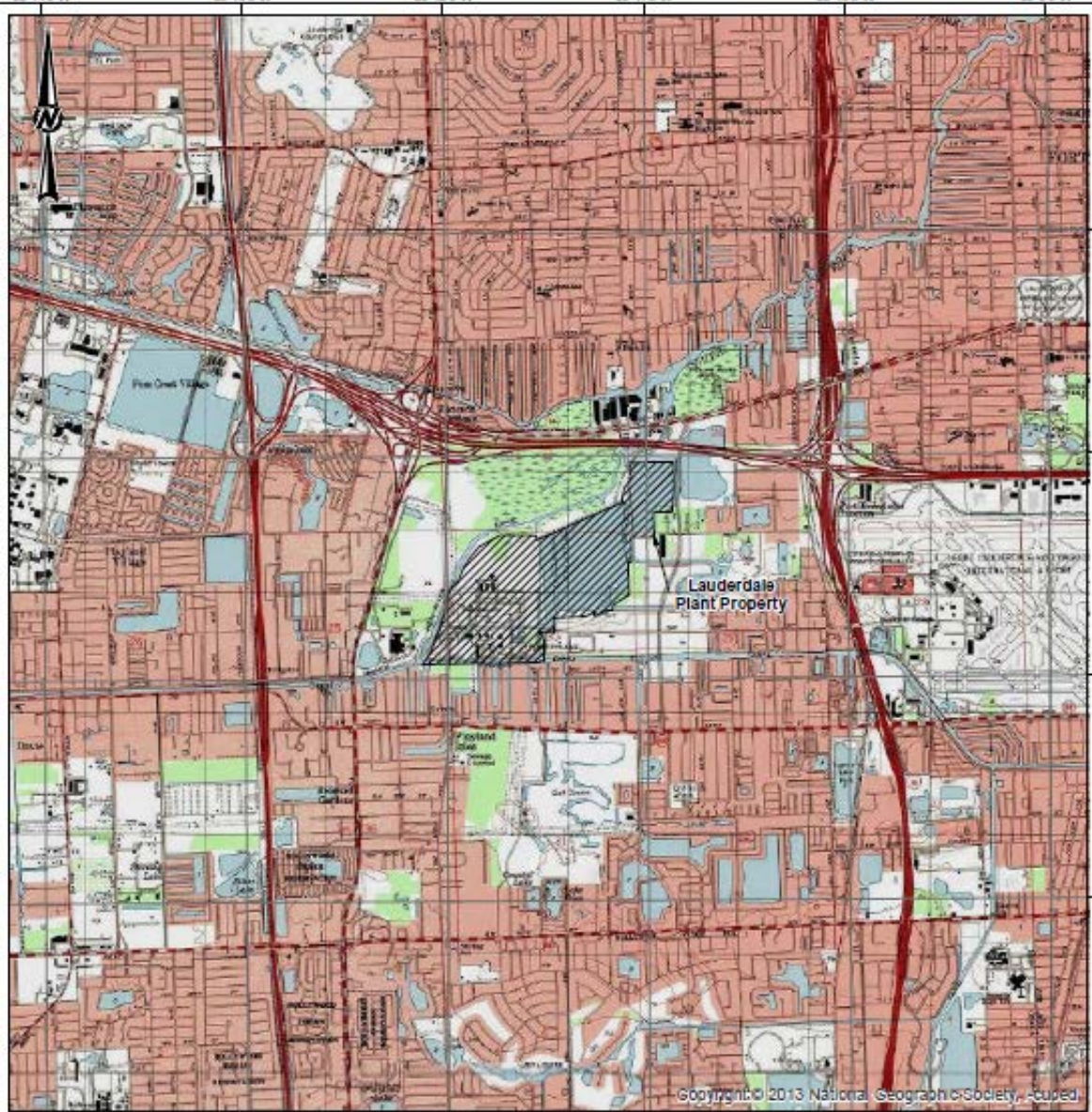
YYYY-MM-DD	2015-01-12
DESIGNED	NRL
PREPARED	NRL
REVIEWED	KAB
APPROVED	KAB

PROJECT NO.	CONTROL	REV	FIGURE
103-87722	ED15	0	2

***Environmental and Land Use Information:
Supplemental Information***


***Preferred Site #5: Lauderdale Plant Peaking Facilities,
Broward County***

(This page is left intentionally blank.)



Copyright © 2013 National Geographic Society, Inc.

LEGEND

 Lauderdale Plant Property

CLIENT
FPL

PROJECT
LAUDERDALE PLANT

TITLE
USGS LOCATION MAP



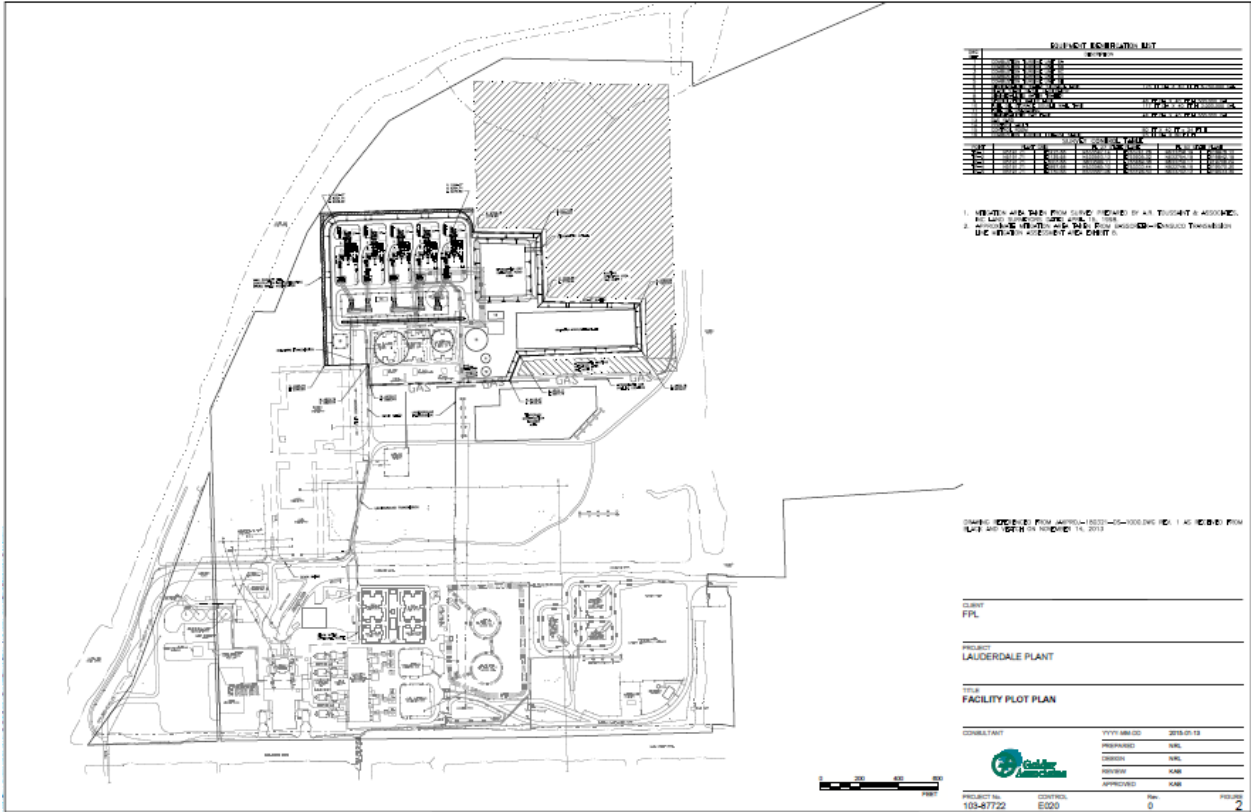
CONSULTANT



YYYY-MM-DD	2015-01-12
DESIGNED	NRL
PREPARED	NRL
REVIEWED	KAB
APPROVED	KAB

REFERENCE(S)
COORDINATE SYSTEM: NAD 1983 STATEPLANE FLORIDA EAST FIPS 8301 FEET
PROJECTION: TRANSVERSE MERCATOR
DATUM: NORTH AMERICAN 1983

PROJECT NO. 103-87722	CONTROL E019	REV 0	FIGURE 1
---------------------------------	------------------------	-----------------	--------------------



REVISIONS	
NO.	DESCRIPTION
1	ISSUED FOR PERMITS
2	ISSUED FOR PERMITS
3	ISSUED FOR PERMITS
4	ISSUED FOR PERMITS
5	ISSUED FOR PERMITS
6	ISSUED FOR PERMITS
7	ISSUED FOR PERMITS
8	ISSUED FOR PERMITS
9	ISSUED FOR PERMITS
10	ISSUED FOR PERMITS
11	ISSUED FOR PERMITS
12	ISSUED FOR PERMITS
13	ISSUED FOR PERMITS
14	ISSUED FOR PERMITS
15	ISSUED FOR PERMITS
16	ISSUED FOR PERMITS
17	ISSUED FOR PERMITS
18	ISSUED FOR PERMITS
19	ISSUED FOR PERMITS
20	ISSUED FOR PERMITS


1. MATERIALS AND METHODS FROM SOURCE PROVIDED BY AIR TRUSTEE & ASSOCIATES, INC. AND SUBJECT TO PERMITS, 10/15/19
2. ALL OTHER MATERIALS AND METHODS PROVIDED BY SOURCE THROUGHOUT THE DESIGN AND CONSTRUCTION.

DESIGNED BY: FPL 44701-1001-05-1000000 (R) 1 4/16/2019 FROM L&E GROUP INC. 10/15/19

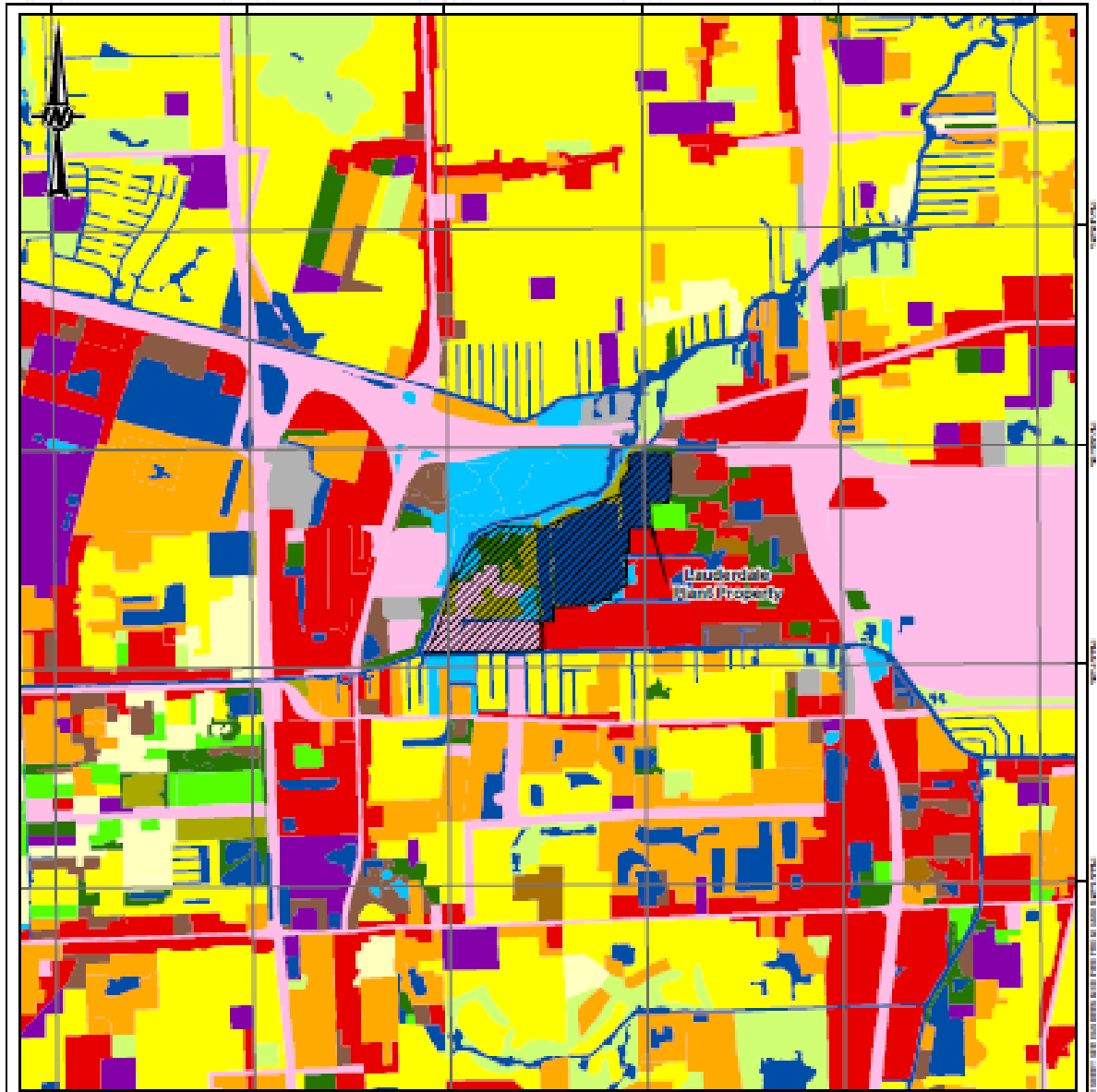
CLIENT
FPL

PROJECT
LAUDERDALE PLANT

TITLE
FACILITY PLOT PLAN

CONSULTANT	DATE	BY	CHKD BY
	11/11/2019	EDD	EW
	11/11/2019	EW	EW
	11/11/2019	EW	EW
	11/11/2019	EW	EW
	11/11/2019	EW	EW

PROJECT NO. 103-87722 COUNTY EDOO SHEET 0 TOTAL SHEETS 2



LEGEND

- | | |
|---------------------------|------------------------------------------|
| Lauderdale Plant Property | Open Land |
| Low Density Urban | Agriculture |
| Medium Density Urban | Rangeland |
| High Density Urban | Upland Forests |
| Commercial | Water |
| Industrial | Wetlands |
| Mining | Barren Land |
| Institutional | Transportation, Communication, Utilities |
| Recreational | |



REFERENCE(S)
 COORDINATE SYSTEM: NAD 1983 STATEPLANE FLORIDA EAST FIPS 5001 F82T
 PROJECT GCS: TRANSVERSE MERCATOR
 DATUM: NORTH AMERICAN 1983

CLIENT
FPL

PROJECT
LAUDERDALE PLANT

TITLE
LAND USE / LAND COVER MAP

CONSULTANT



YYYY-MM-DD	2018-01-13
DESIGNED	NPL
PREPARED	NPL
REVIEWED	KAB
APPROVED	KAB

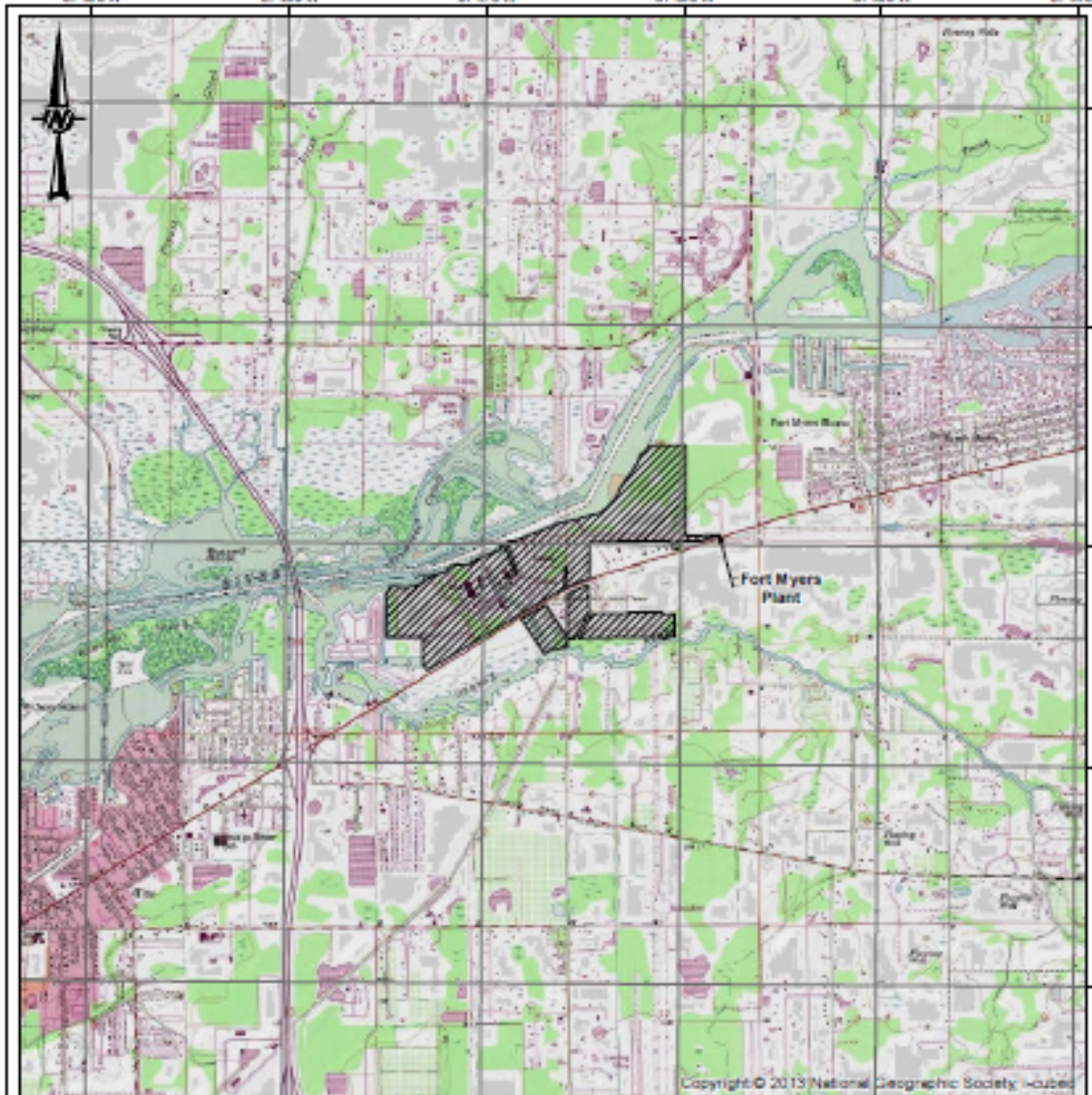
PROJECT NO.	CONTROL	REV	FIGURE
128-87722	8021	0	3

(This page is left intentionally blank.)

***Environmental and Land Use Information:
Supplemental Information***

***Preferred Site #6: Ft. Myers Plant Peaking Facilities,
Lee County***

(This page is left intentionally blank.)



LEGEND
 Fort Myers Plant



REFERENCES:
 COORDINATE SYSTEM: NAD 1983 STATEPLANE FLORIDA EAST FIPS 5001 F88T
 PROJECTION: TRANSVERSE MERCATOR
 DATUM: NORTH AMERICAN 1983

CLIENT
 FPL

PROJECT
 FORT MYERS PLANT

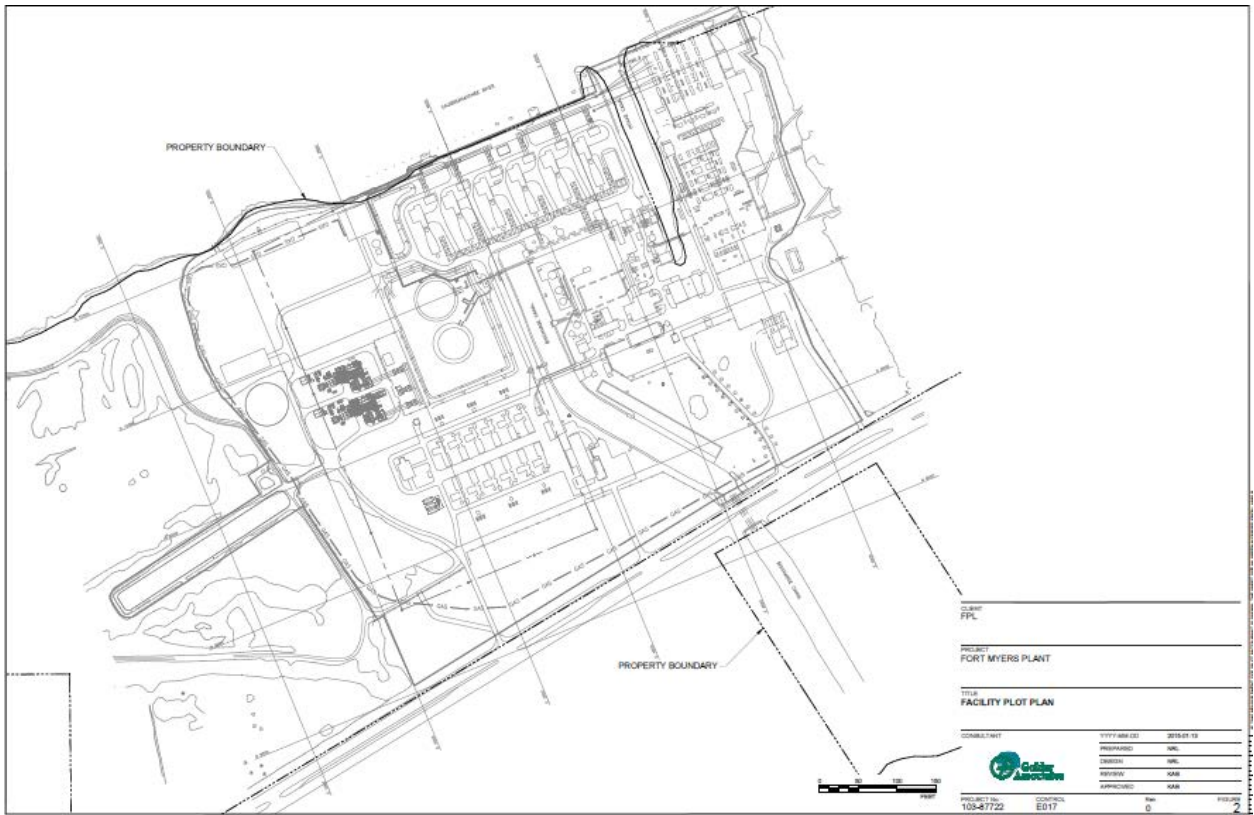
TITLE
 USGS LOCATION MAP

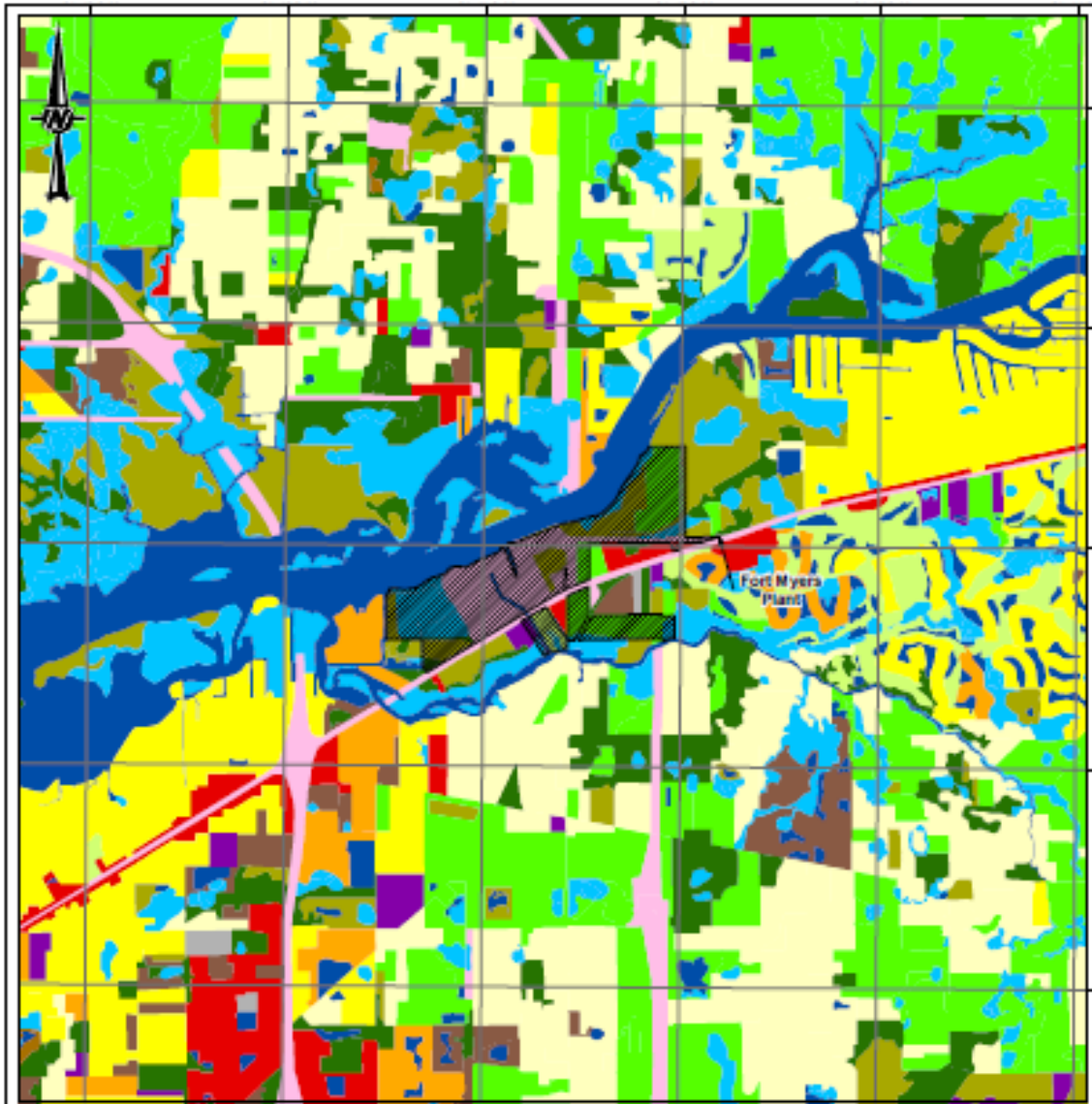
CONSULTANT



DATE	2018-01-12
DESIGNED	NPL
PREPARED	NPL
REVIEWED	KAR
APPROVED	KAR

PROJECT NO.	CONTROL	REV	FIGURE
103-87722	8018	0	1





- LEGEND
- | | |
|----------------------|------------------------------------------|
| Fort Myers Plant | Open Land |
| SWMD Land Use (2008) | Agriculture |
| Low Density Urban | Rangeland |
| Medium Density Urban | Upland Forests |
| High Density Urban | Water |
| Commercial | Wetlands |
| Industrial | Barren Land |
| Mining | Transportation, Communication, Utilities |
| Institutional | |
| Recreational | |

CLIENT
FPL

PROJECT
FORT MYERS PLANT

TITLE
LAND USE / LAND COVER MAP



CONSULTANT



YYYY-MM-DD	2018-01-12
DESIGNED	NPL
PREPARED	NPL
REVIEWED	KAR
APPROVED	KAR

REFERENCES)
COORDINATE SYSTEM: NAD 1983 STATEPLANE FLORIDA EAST FIPS 5001 FEET
PROJECTION: TRANSVERSE MERCATOR
DATUM: NORTH AMERICAN 1983

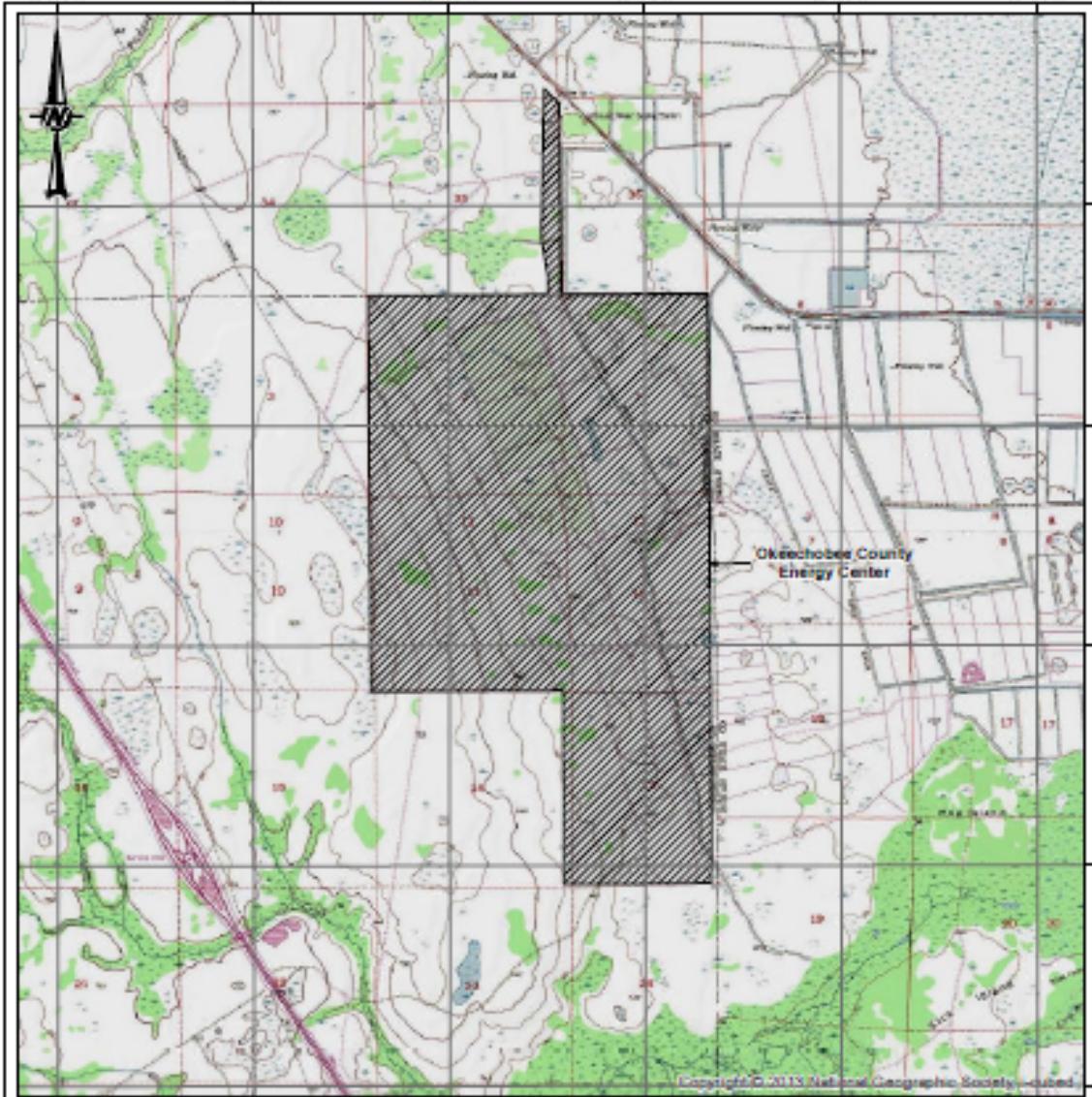
PROJECT NO. 103-87722 CONTROL 8018 REV 0 SHEET 3

(This page is left intentionally blank.)

***Environmental and Land Use Information:
Supplemental Information***

***Preferred Site #7: Okeechobee Site
Okeechobee County***

(This page is left intentionally blank.)



LEGEND
 Okeechobee County Energy Center

CLIENT
 FPL

PROJECT
 OKEECHOBEE COUNTY ENERGY CENTER

TITLE
 USGS LOCATION MAP

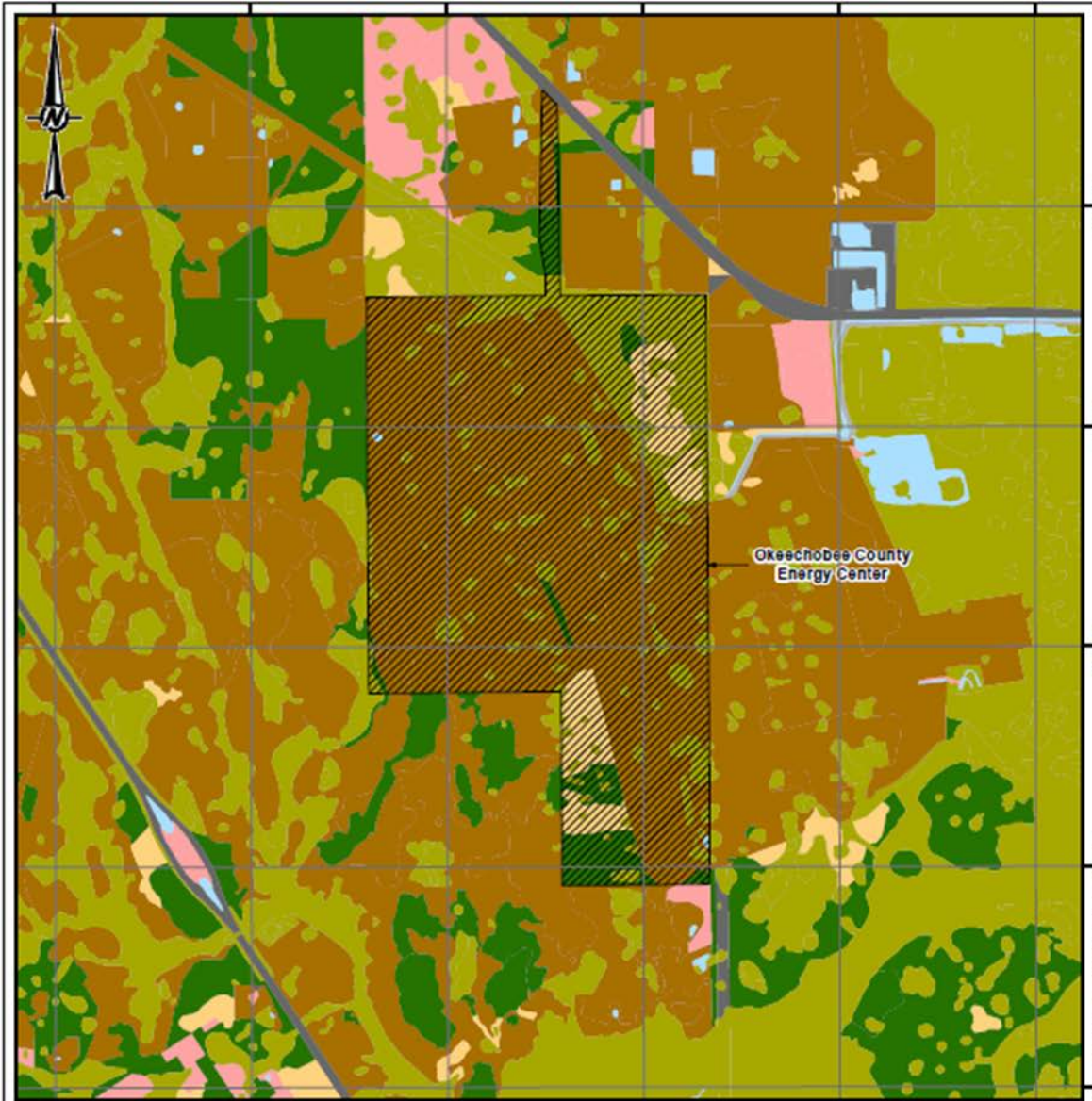
CONSULTANT
 Golder Associates

YYYY-MM-DD	2018-01-12
DESIGNED	NRL
PREPARED	NRL
REVIEWED	KAB
APPROVED	KAB

SCALE
 0 2,000 4,000 8,000 Feet

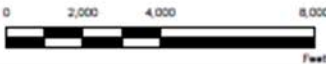
REFERENCES
 COORDINATE SYSTEM: NAD 1983 STATEPLANE FLORIDA EAST FIPS 3201 F80T
 PROJECTION: TRANSVERSE MERCATOR
 DATUM: NORTH AMERICAN 1983

PROJECT NO. 133-87722 **CONTROL** 8007 **REV** 0 **SHEET** 1



LEGEND

-  Okeechobee County Energy Center
-  SJRWMD Land Use (2009)
-  Urban
-  Agriculture
-  Upland nonforested
-  Forest
-  Water
-  Wetland
-  Barren land
-  Transportation, Communication, Utilities



REFERENCE(S)
 COORDINATE SYSTEM: NAD 1983 STATEPLANE FLORIDA EAST FIPS 0901 FEET
 PROJECTION: TRANSVERSE MERCATOR
 DATUM: NORTH AMERICAN 1983

CLIENT
 FPL

PROJECT
 OKEECHOBEE COUNTY ENERGY CENTER

TITLE
 LAND USE / LAND COVER MAP

CONSULTANT



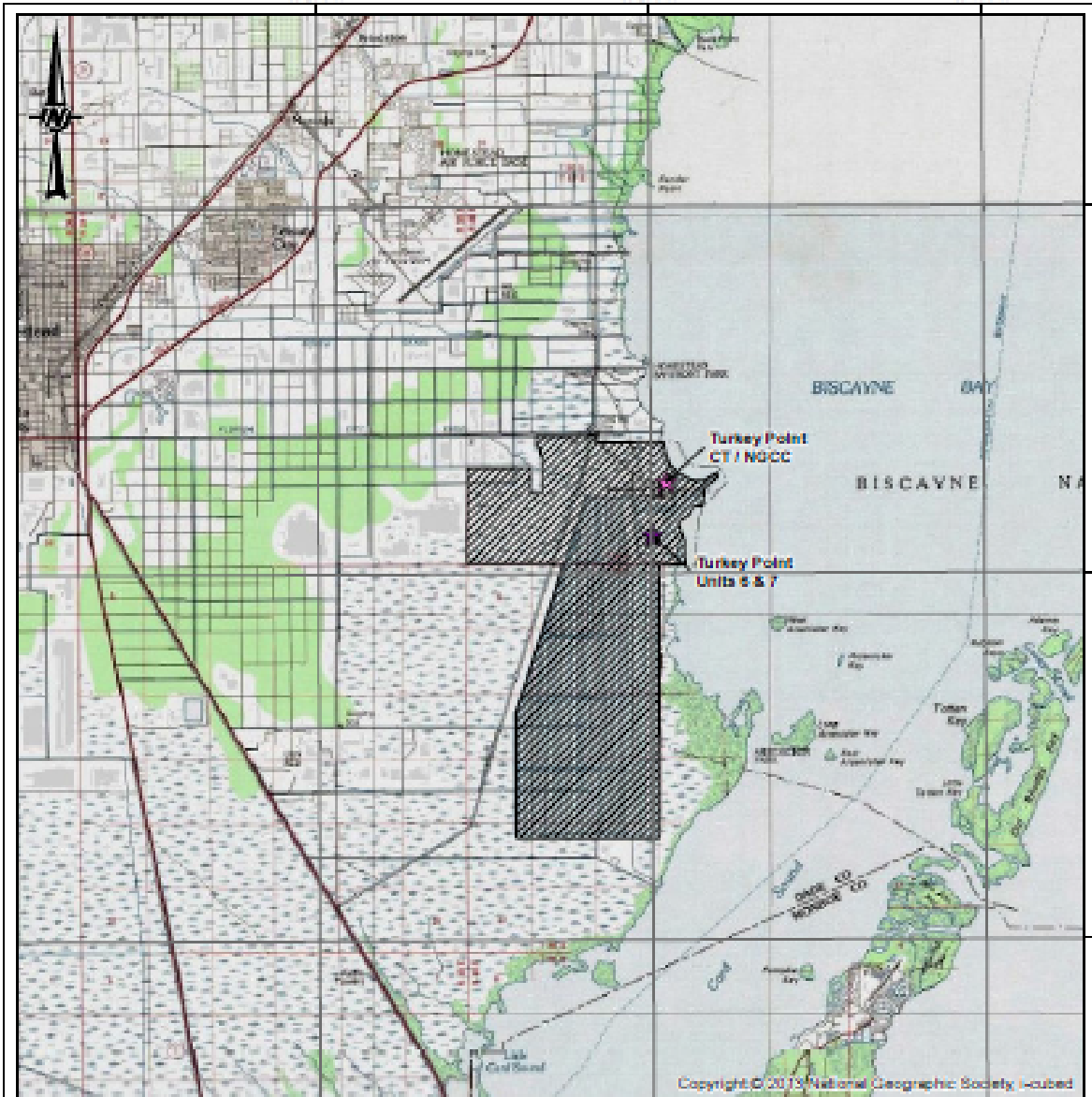
YYYY-MM-DD	2015-01-12
DESIGNED	NRL
PREPARED	NRL
REVIEWED	KAB
APPROVED	KAB

PROJECT NO. 103-87722	CONTROL E009	REV. 0	FIGURE 2
--------------------------	-----------------	-----------	-------------

***Environmental and Land Use Information:
Supplemental Information***

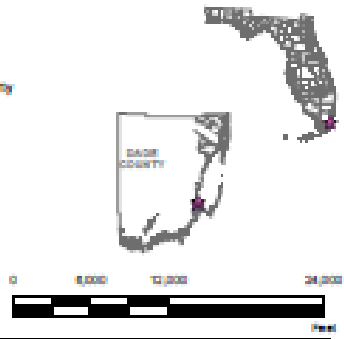
***Preferred Site #8: Turkey Point Plant
Miami-Dade County***

(This page is left intentionally blank.)



LEGEND

- ★ Turkey Point Units 6 & 7
- ★ Turkey Point CT / NGCC
- ▨ Turkey Point Plant Property



CLIENT

FPL

PROJECT

TURKEY POINT
UNITS 6 & 7 / CT / NGCC

TITLE

USGS LOCATION MAP

CONSULTANT



YYYY-MM-DD 2019-01-12

DESIGNED NRL

PREPARED NRL

REVIEWED KAB

APPROVED KAB

REFERENCES

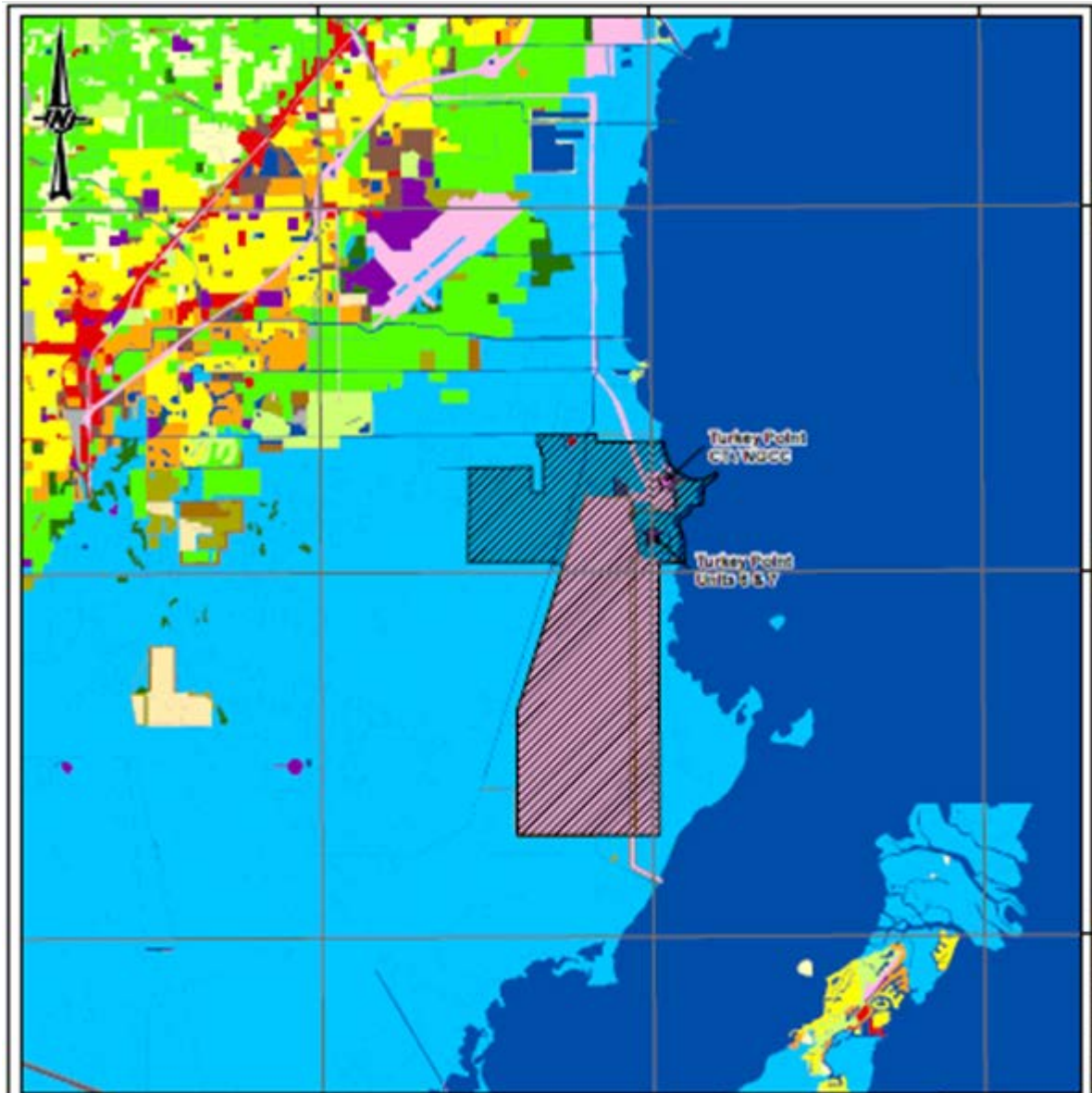
COORDINATE SYSTEM: NAD 1983 DATUM: FLORIDA EAST TIER 100 FEET
 PROJECT ID: TURKEYPOINT-BROWARD
 DATUM: NORTH AMERICAN 1983

PROJECT NO:
19-0729

CONTROL:
ISSUE

REV:
0

PAGE:
1



- LEGEND**
- ★ Turkey Point Units 6 & 7
 - ★ Turkey Point CT / NGCC
 - ▨ Turkey Point Plant Plant Property
 - Low Density Urban
 - Medium Density Urban
 - High Density Urban
 - Commercial
 - Industrial
 - Mining
 - Institutional
 - Recreational
 - Open Land
 - Agriculture
 - Rangeland
 - Upland Forests
 - Water
 - Wetlands
 - Barren Land
 - Transportation, Communication, Utilities

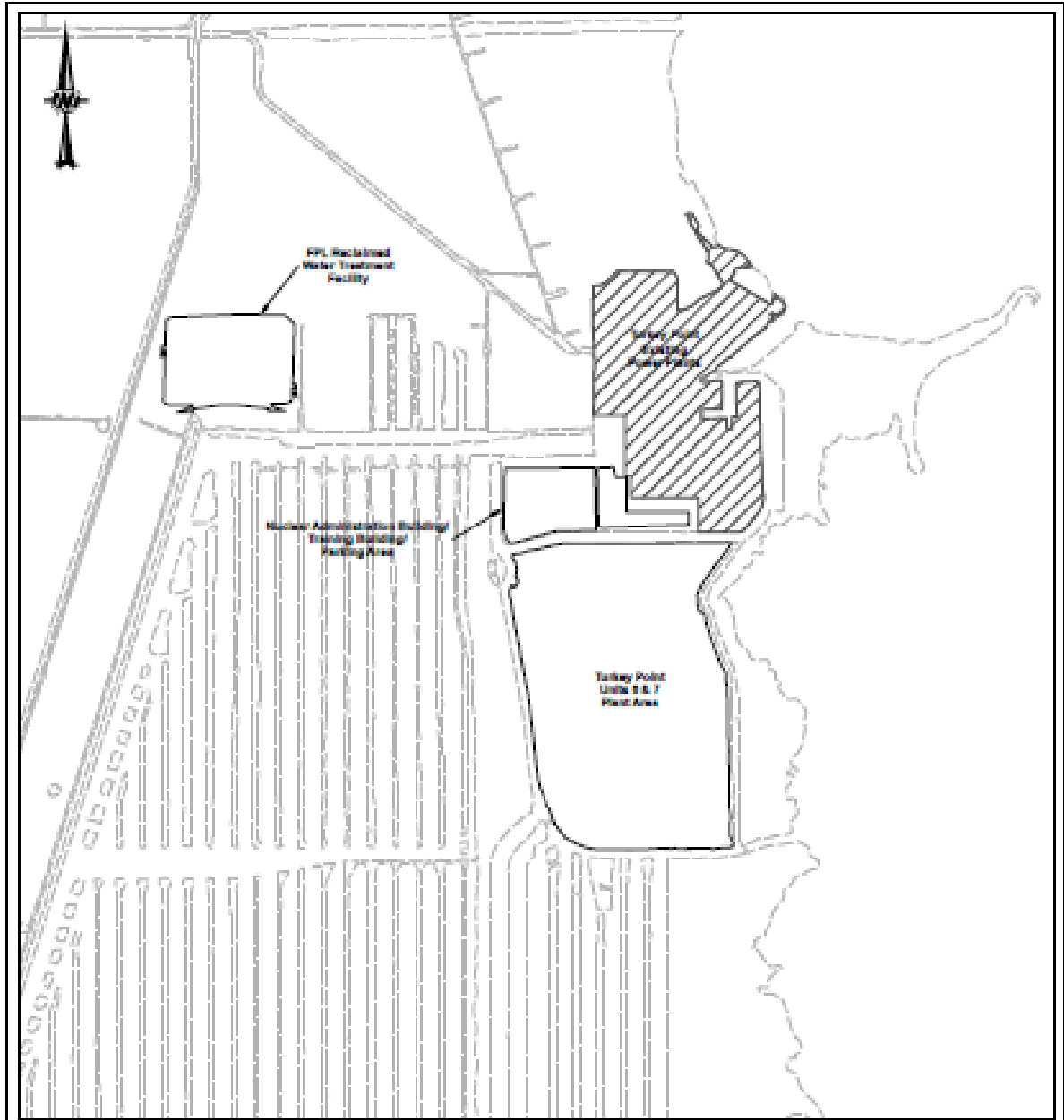
CLIENT
FPL

PROJECT
TURKEY POINT
UNITS 6 & 7 / CT / NGCC

TITLE
LAND USE / LAND COVER MAP

CONSULTANT	YYYY-MM-DD	2018-01-12	
	DESIGNED	NPL	
	PREPARED	NPL	
	REVIEWED	KAM	
	APPROVED	KAM	
PROJECT NO.	CONTROL	REV	FIGURE
103-87722	8027	0	2


REFERENCES
COORDINATE SYSTEM: NAD 1983 STATEPLANE FLORIDA EAST FIPS 5001 FWS1
PROJECT OR TRANSVERSE MERCATOR
DATUM: NORTH AMERICAN 1983



CLIENT
FPL

PROJECT
TURKEY POINT
UNITS 6 & 7 / CT / NGCC

TITLE
FACILITY PLOT PLAN

CONSULTANT	YYYYMMDD	2018-08-20
	DESIGNED	NRL
	PREPARED	NRL
	REVIEWED	KAB
	APPROVED	KPK

PROJECT NO. 100-87720	CONT. NO. 800	REV. 0	FIGURE 3
--------------------------	------------------	-----------	-------------

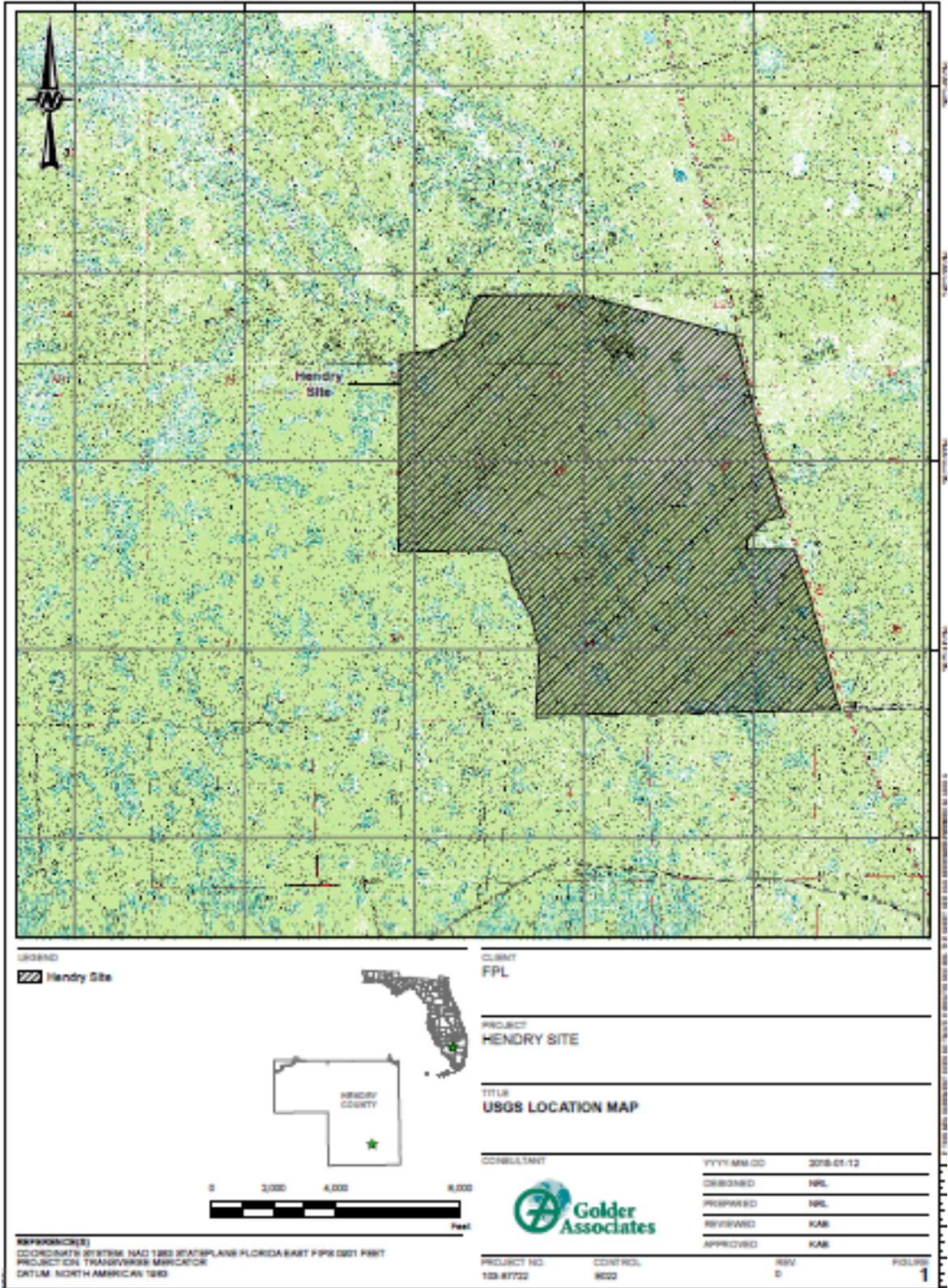
REFERENCE(S)
FACILITY FEATURES, SOUTH-TURKEY POINT PLANT AREA, FPL, | GOLDER ASSOCIATES INC.,
2018-2019

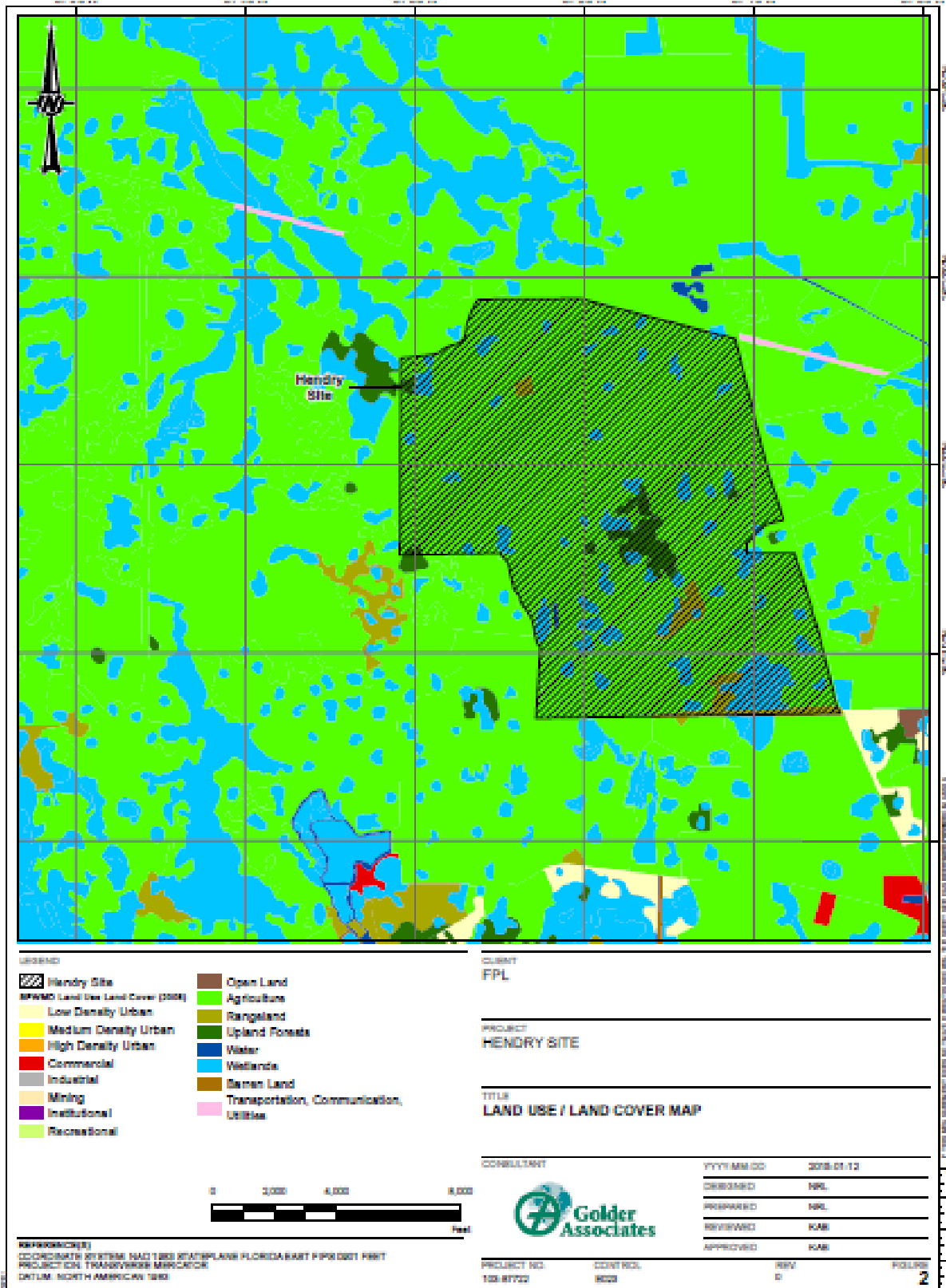
(This page is left intentionally blank.)

***Environmental and Land Use Information:
Supplemental Information***

Potential Site #1: Hendry County

(This page is left intentionally blank.)

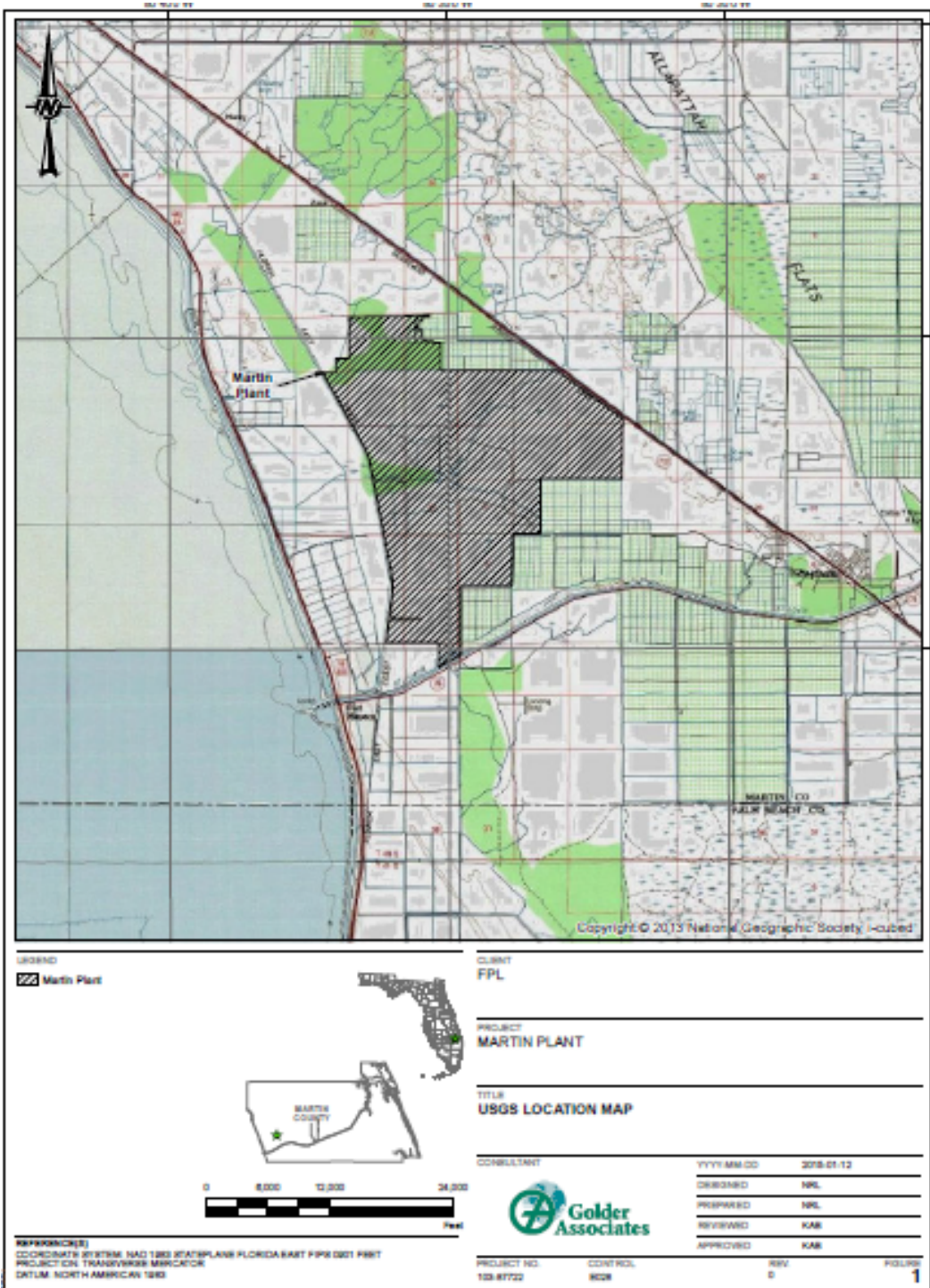


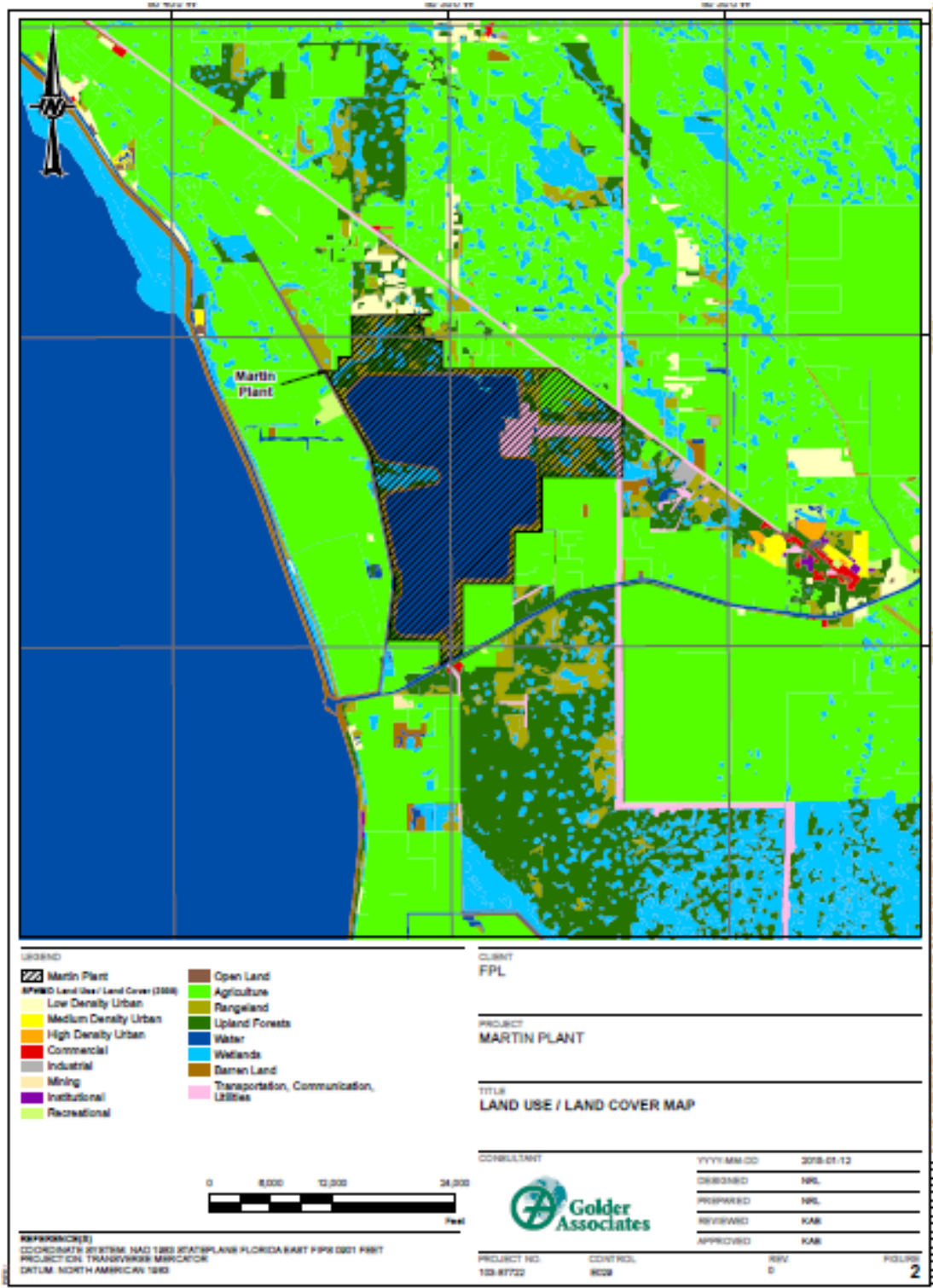


***Environmental and Land Use Information:
Supplemental Information***

Potential Site #2: Martin County

(This page is left intentionally blank.)

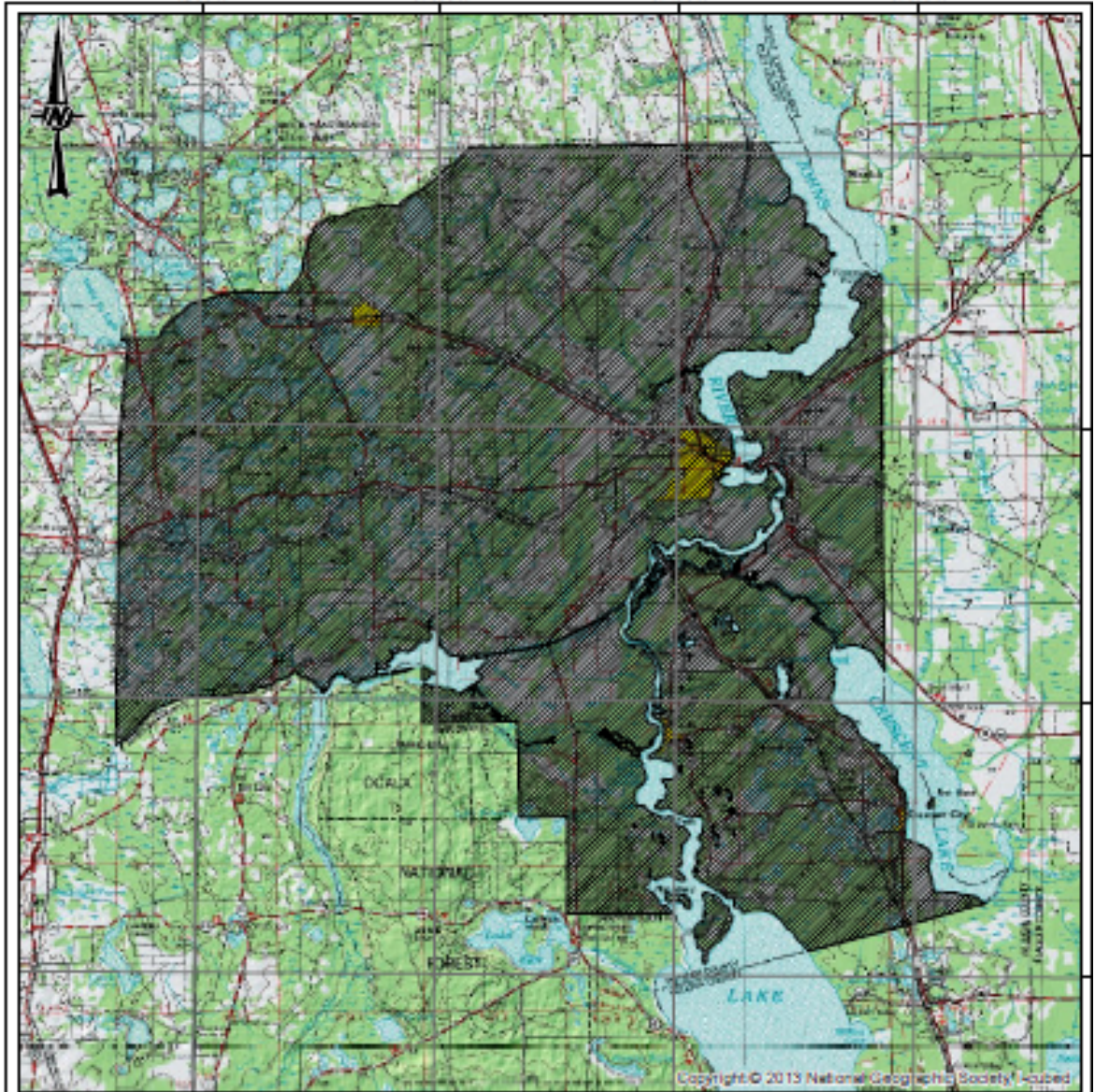





***Environmental and Land Use Information:
Supplemental Information***

***Potential Site #3: Putnam Plant Site,
Putnam County***

(This page is left intentionally blank.)



Copyright © 2013 National Geographic Society. Hoisted

LEGEND
 Putnam County

CLIENT
 FPL



PROJECT
 PUTNAM COUNTY

TITLE
 USGS LOCATION MAP



CONSULTANT



YYYY-MM-DD 2018-01-12

DESIGNED NPL

PREPARED NPL

REVIEWED KAB

APPROVED KAB

REFERENCE(S)
 COORDINATE SYSTEM: NAD 1983 STATEPLANE FLORIDA EAST FIPS 5001 F88T
 PROJECTION: TRANSVERSE MERCATOR
 DATUM: NORTH AMERICAN 1983

PROJECT NO. 103.87722
 CONTROL 8004

REV 0

FIGURE 1



- LEGEND
- SJRWMD Land Use (2009)**
- Urban
 - Agriculture
 - Upland nonforested
 - Forest
 - Water
 - Wetland
 - Barren land
 - Transportation, Communication, Utilities

CLIENT
FPL

PROJECT
PUTNAM COUNTY

TITLE
LAND USE / LAND COVER MAP



CONSULTANT



YYYY-MM-DD 2018-01-12

DRAWN BY NPL

PREPARED BY NPL

REVIEWED BY KAE

APPROVED BY KAE

REFERENCES
COORDINATE SYSTEM: NAD 1983 STATEPLANE FLORIDA EAST FIPS 5001 F80T
PROJECTION: TRANSVERSE MERCATOR
DATUM: NORTH AMERICAN 1983

PROJECT NO. 103-87722 CONTROL: 8028

REV: 0

PAGE: 2