

CLASS "A" OR "B"

WATER AND/OR WASTEWATER UTILITIES
(Gross Revenue of More Than \$200,000 Each)

ANNUAL REPORT

OF

WS709 28
Lake Placid Utilities, Inc.
% Utilities, Inc.
200 Weathersfield Avenue
Altamonte Springs, FL 32714-4099

4146/3475

Certificate Number(s)

Submitted To The

STATE OF FLORIDA



WS709-00-AR

LAKE PLACID UTILITIES

PUBLIC SERVICE COMMISSION

FOR THE

YEAR ENDED DECEMBER 31, 2000

CLASS "A" OR "B"

RECEIVED
FLORIDA PUBLIC SERVICE
COMMISSION

WATER AND/OR WASTEWATER UTILITIES

(Gross Revenue of More Than \$200,000 Each)

01 APR 30 AM 10:47

OFFICIAL COPY
DIVISION OF
ANNUAL REPORT

DEPARTMENT OF
ECONOMIC REGULATION

OF

WS709

28

Lake Placid Utilities, Inc.

% Utilities, Inc.

200 Weathersfield Avenue

Altamonte Springs, FL 32714-4099

414W/3475

Certificate Number(s)

Submitted To The

STATE OF FLORIDA



PUBLIC SERVICE COMMISSION

FOR THE

YEAR ENDED DECEMBER 31, 2000

CLASS "A" OR "B"

WATER AND/OR WASTEWATER UTILITIES
(Gross Revenue of More Than \$200,000 Each)

ANNUAL REPORT

OF

LAKE PLACID UTILITIES, INC

Exact Legal Name of Respondent

414W 347S

Certificate Number(s)

Submitted To The

STATE OF FLORIDA

PUBLIC SERVICE COMMISSION

FOR THE

YEAR ENDED

31-Dec-00

**THIS PAGE LEFT
BLANK INTENTIONALLY**

GENERAL INSTRUCTIONS

1. Prepare this report in conformity with the 1996 National Association of Regulatory Utility Commissioners Uniform System of Accounts for Water and/or Wastewater Utilities (USOA).
2. Interpret all accounting words and phrases in accordance with the USOA.
3. Complete each question fully and accurately, even if it has been answered in a previous annual report. Enter the word "None" where it truly and completely states the fact.
4. For any question, section, or page which is not applicable to the respondent, enter the words "Not Applicable". Do not omit any pages.
5. Where dates are called for, the month and day should be stated as well as the year.
6. All schedules requiring dollar entries should be rounded to the nearest dollar unless otherwise specifically indicated.
7. Complete this report by means which result in a permanent record, such as by computer or typewriter.
8. If there is not enough room on any schedule, an additional page or pages may be added; provided the format of the added schedule matches the format of the schedule with not enough room. Such a schedule should reference the appropriate schedules, state the name of the utility, and state the year of the report.
9. If it is necessary or desirable to insert additional statements for the purpose of further explanation of schedules, such statement should be made at the bottom of the page or an additional page inserted. Any additional pages should state the name of the utility, the year of the report, and reference the appropriate schedule.
10. For water and wastewater utilities with more than one rate group and/or system, water and wastewater pages should be completed for each rate group and/or system group. These pages should be grouped together and tabbed by rate group and/or system.
11. All other water and wastewater operations not regulated by the Commission and other regulated industries should be reported as "Other than Reporting Systems".
12. Financial information for multiple systems charging rates which are covered under the same tariff should be reported as one system. However, the engineering data must be reported by individual system.
13. For water and wastewater utilities with more than one system, one (1) copy of workpapers showing the consolidation of systems for the operating sections, should be filed with the annual report.
14. The report should be filled out in quadruplicate and the original and two copies returned by March 31, of the year following the date of the report. The report should be returned to:

**Florida Public Service Commission
Division of Water and Wastewater
2540 Shumard Oak Boulevard
Tallahassee, Florida 32399-0873**

The fourth copy should be retained by the utility.

TABLE OF CONTENTS

SCHEDULE	PAGE	SCHEDULE	PAGE
EXECUTIVE SUMMARY			
Certification	E-1	Business Contracts with Officers, Directors and Affiliates	E-7
General Information	E-2	Affiliation of Officers & Directors	E-8
Directory of Personnel Who Contact the FPSC	E-3	Businesses which are a Byproduct, Coproduct or Joint Product Result of Providing Service	E-9
Company Profile	E-4	Business Transactions with Related Parties.	E-10
Parent / Affiliate Organization Chart	E-5	Part I and II	
Compensation of Officers & Directors	E-6		
FINANCIAL SECTION			
Comparative Balance Sheet - Assets and Other Debits	F-1	Unamortized Debt Discount / Expense / Premium	F-13
Comparative Balance Sheet - Equity Capital and Liabilities	F-2	Extraordinary Property Losses	F-13
Comparative Operating Statement	F-3	Miscellaneous Deferred Debits	F-14
Schedule of Year End Rate Base	F-4	Capital Stock	F-15
Schedule of Year End Capital Structure	F-5	Bonds	F-15
Capital Structure Adjustments	F-6	Statement of Retained Earnings	F-16
Utility Plant	F-7	Advances from Associated Companies	F-17
Utility Plant Acquisition Adjustments	F-7	Long Term Debt	F-17
Accumulated Depreciation	F-8	Notes Payable	F-18
Accumulated Amortization	F-8	Accounts Payable to Associated Companies	F-18
Regulatory Commission Expense - Amortization of Rate Case Expense	F-9	Accrued Interest and Expense	F-19
Nonutility Property	F-9	Misc. Current & Accrued Liabilities	F-20
Special Deposits	F-9	Advances for Construction	F-21
Investments and Special Funds	F-10	Other Deferred Credits	F-21
Accounts and Notes Receivable - Net	F-11	Contributions In Aid of Construction	F-22
Accounts Receivable from Associated Companies	F-12	Accumulated Amortization of CIAC	F-23
Notes Receivable from Associated Companies	F-12	Reconciliation of Reported Net Income with Taxable Income for Federal Income Taxes	F-23
Miscellaneous Current & Accrued Assets	F-12		

TABLE OF CONTENTS

SCHEDULE	PAGE	SCHEDULE	PAGE
WATER OPERATION SECTION			
Listing of Water System Groups	W-1	CIAC Additions / Amortization	W-8
Schedule of Year End Water Rate Base	W-2	Water Operating Revenue	W-9
Water Operating Statement	W-3	Water Utility Expense Accounts	W-10
Water Utility Plant Accounts	W-4	Pumping and Purchased Water Statistics, Source Supply	W-11
Basis for Water Depreciation Charges	W-5	Water Treatment Plant Information	W-12
Analysis of Entries in Water Depreciation Reserve	W-6	Calculation of ERC's	W-13
Contributions In Aid of Construction	W-7	Other Water System Information	W-14
WASTEWATER OPERATION SECTION			
Listing of Wastewater System Groups	S-1	Contributions In Aid of Construction	S-7
Schedule of Year End Wastewater Rate Base	S-2	CIAC Additions / Amortization	S-8
Wastewater Operating Statement	S-3	Wastewater Utility Expense Accounts	S-9
Wastewater Utility Plant Accounts	S-4	Wastewater Operating Revenue	S-10
Analysis of Entries in Wastewater Depreciation Reserve	S-5	Calculation of ERC's	S-11
Basis for Wastewater Depreciation Charges	S-6	Wastewater Treatment Plant Information	S-12
		Other Wastewater System Information	S-13

EXECUTIVE SUMMARY

UTILITY NAME: LAKE PLACID UTILITIES, INC

YEAR OF REPORT

31-Dec-00

CERTIFICATION OF ANNUAL REPORT

I HEREBY CERTIFY, to the best of my knowledge and belief:

YES
☒

NO
☐

1. The utility is in substantial compliance with the Uniform System of Accounts prescribed by the Florida Public Service Commission.

YES
☒

NO
☐

2. The utility is in substantial compliance with all applicable rules and orders of the Florida Public Service Commission.

YES
☒

NO
☐

3. There have been no communications from regulatory agencies concerning noncompliance with, or deficiencies in, financial reporting practices that could have a material effect on the the financial statement of the utility.

YES
☒

NO
☐

4. The annual report fairly represents the financial condition and results of operations of the respondent for the period presented and other information and statements presented in the the report as to the business affairs of the respondent are true, correct and complete for the period for which it represents.

Items Certified

1.	2.	3.	4.
<input type="checkbox"/>	<input type="checkbox"/>	<input type="checkbox"/>	<input type="checkbox"/>

1.	2.	3.	4.
<input checked="" type="checkbox"/>	<input checked="" type="checkbox"/>	<input checked="" type="checkbox"/>	<input checked="" type="checkbox"/>

(Signature of Chief Executive Officer of the utility) *



(Signature of Chief Financial Officer of the utility) *

* Each of the four items must be certified YES or NO. Each item need not be certified by both officers. The items being certified by the officer should be indicated in the appropriate area to the left of the signature.

NOTICE: Section 837.06, Florida Statutes, provides that any person who knowingly makes a false statement in writing with the intent to mislead a public servant in the performance of his duty shall be guilty of a misdemeanor of the second degree.

ANNUAL REPORT OF

YEAR OF REPORT

31-Dec-00

LAKE PLACID UTILITIES, INC

County: Highland County

(Exact Name of Utility)

List below the exact mailing address of the utility for which normal correspondence should be sent:

2335 SANDERS ROAD

NORTHBROOK IL 60062

Telephone: 847-498-6440

E Mail Address: NONE

WEB Site: NONE

Sunshine State One-Call of Florida, Inc. Member Number LPU487

Name and address of person to whom correspondence concerning this report should be addressed:

JOHN S HAYNES

2335 SANDERS ROAD

NORTHBROOK IL 60062

Telephone: 847-498-6440

List below the address of where the utility's books and records are located:

2335 SANDERS ROAD

NORTHBROOK IL 60062

Telephone: 847-498-6440

List below any groups auditing or reviewing the records and operations:

ARTHUR ANDERSEN LLP

Date of original organization of the utility: 1969

Check the appropriate business entity of the utility as filed with the Internal Revenue Service

Individual

☐

Partnership

☐

Sub S Corporation

☐

1120 Corporation

☒

List below every corporation or person owning or holding directly or indirectly 5% or more of the voting securities of the utility:

	Name	Percent Ownership
1.	UTILITIES INC	100%
2.		
3.		
4.		
5.		
6.		
7.		
8.		
9.		
10.		

YEAR OF REPORT
31-Dec-00

[illegible]

- E-3

COMPANY PROFILE

Provide a brief narrative company profile which covers the following areas:

- A. Brief company history.
- B. Public services rendered.
- C. Major goals and objectives.
- D. Major operating divisions and functions.
- E. Current and projected growth patterns.
- F. Major transactions having a material effect on operations.

- | | |
|----|---|
| A. | Formed in 1969, Lake Placid Utilities, Inc. was acquired by Utilities Inc. in October of 1993. |
| B. | Lake Placid Utilities, Inc. performs water and wastewater services |
| C. | Maintain a high quality of service and earn a fair return. |
| D. | Only one subdivision is served |
| E. | We expect modest growth currently with anticipated higher growth in the future |
| F. | The system was purchased at the end of 1993 and is currently being brought up to Utilities Inc. standards of quality. |

PARENT / AFFILIATE ORGANIZATION CHART

Current as of 12/31/2000

Complete below an organizational chart that show all parents, subsidiaries and affiliates of the utility.
The chart must also show the relationship between the utility and affiliates listed on E-7, E-10(a) and E-10(b).

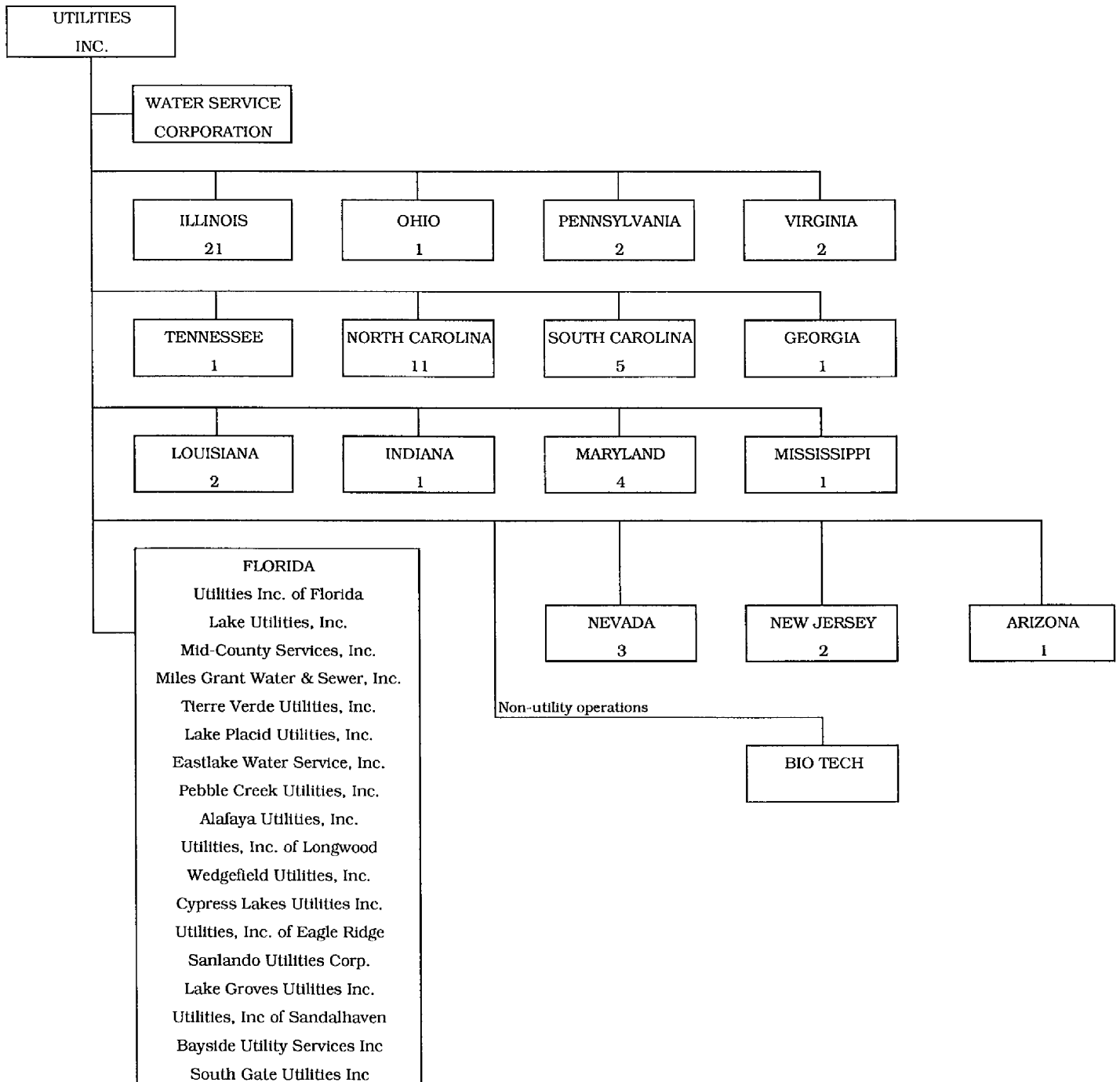
UTILITIES, INC. -- PARENT COMPANY

WATER SERVICE CORP. -- SERVICE COMPANY SUPPLYING MOST
SERVICES REQUIRED BY UTILITY.

UTILITIES INC. of FLORIDA -- provides office personnel and administrative
staff.

SEE ATTACHED

Parent And Affiliate Organizational Chart



UTILITIES, INC. - Parent Company

WATER SERVICE CORP. - Service organization providing administrative and other service functions for the utility.

NOTE: Within each state except Florida is the number of companies owned.

COMPENSATION OF OFFICERS

For each officer, list the time spent on respondent as an officer compared to time spent on total business activities and the compensation received as an officer from the respondent.			
NAME (a)	TITLE (b)	% OF TIME SPENT AS OFFICER OF THE UTILITY (c)	OFFICERS' COMPENSATION (d)
JAMES L CAMAREN	CHAIRMAN/CEO		\$ NONE
LAWRENCE N SCHUMACHER	PRESIDENT		NONE
ANDREW N DOPUCH	VP/SECRETARY		NONE
CARL J WENZ	VP		NONE
DAVID C CARTER	VP		NONE

COMPENSATION OF DIRECTORS

For each director, list the number of director meetings attended by each director and the compensation received as a director from the respondent.			
NAME (a)	TITLE (b)	NUMBER OF DIRECTORS' MEETINGS ATTENDED (c)	DIRECTORS' COMPENSATION (d)
			\$ NONE

BUSINESS CONTRACTS WITH OFFICERS, DIRECTORS AND AFFILIATES

List all contracts, agreements, or other business arrangements* entered into during the calendar year (other than compensation related to position with Respondents) between the Respondent and officer and director listed on page E-6. In addition, provide the same information with respect to professional services for each firm, partnership, or organization with which the officer or director is affiliated.

NAME OF OFFICER, DIRECTOR OR AFFILIATE (a)	IDENTIFICATION OF SERVICE OR PRODUCT (b)	AMOUNT (c)	NAME AND ADDRESS OF AFFILIATED ENTITY (d)
NO BUSINESS CONTRACTS, AGREEMENTS OR OTHER ARRANGEMENTS WERE ENTERED INTO DURING THE CURRENT YEAR BY THE OFFICERS LISTED ON PAGE E6, THE DIRECTORS OR AFFILIATES.		\$	

* Business Agreement, for this schedule, shall mean any oral or written business deal which binds the concerned parties for products or services during the reporting year or future years. Although the Respondent and/or other companies will benefit from the arrangement, the officer or director is, however, acting on his behalf or for the benefit of other companies or persons.

[illegible]

Complete the following for any business which is conducted as a byproduct, coproduct, or joint product as a result of providing water and / or wastewater service. This would include any business which requires the use of utility land and facilities. Examples of these types of businesses would be orange groves, nurseries, tree farms, fertilizer manufacturing, etc. This would not include any business for which the assets are properly included in Account 121 - Nonutility Property along with the associated revenue and expenses segregated out as nonutility also.

[illegible]

YEAR OF REPORT
31-Dec-00

List each contract, agreement, or other business transaction exceeding a cumulative amount of \$500 in any one year, entered into between the Respondent and a business or financial organization, firm, or partnership named on pages E-2 and E-6, identifying the parties, amounts, dates and product, and asset, or service involved.

1. Enter in this part all transactions involving services and products received or provided.

- management, legal and accounting services
- computer services
- engineering & construction services
- repairing and servicing of equipment

- material and supplies furnished
- leasing of structures, land, and equipment
- rental transactions
- sale, purchase or transfer of various products

E-10(a)

FINANCIAL SECTION

UTILITY NAME: LAKE PLACID UTILITIES, INC

YEAR OF REPORT 31-Dec-00

**COMPARATIVE BALANCE SHEET
ASSETS AND OTHER DEBITS**

ACCT. NO. (a)	ACCOUNT NAME (b)	REF. PAGE (c)	PREVIOUS YEAR (d)	CURRENT YEAR (e)
UTILITY PLANT				
101-106	Utility Plant	F-7	\$ 682,935	\$ 722,110
108-110	Less: Accumulated Depreciation and Amortization	F-8	298,761	320,868
Net Plant			\$ 384,174	\$ 401,242
114-115	Utility Plant Acquisition adjustment (Net)	F-7	(23,056)	(22,102)
116 *	Other Utility Plant Adjustments			
Total Net Utility Plant			\$ 361,118	\$ 379,140
OTHER PROPERTY AND INVESTMENTS				
121	Nonutility Property	F-9	\$	\$
122	Less: Accumulated Depreciation and Amortization			
Net Nonutility Property			\$	\$
123	Investment In Associated Companies	F-10		
124	Utility Investments	F-10		
125	Other Investments	F-10		
126-127	Special Funds	F-10		
Total Other Property & Investments			\$	\$
CURRENT AND ACCRUED ASSETS				
131	Cash		\$ -	\$ -
132	Special Deposits	F-9	-	-
133	Other Special Deposits	F-9		
134	Working Funds			
135	Temporary Cash Investments			
141-144	Accounts and Notes Receivable, Less Accumulated Provision for Uncollectible Accounts	F-11	11,167	13,915
145	Accounts Receivable from Associated Companies	F-12		
146	Notes Receivable from Associated Companies	F-12	-	-
151-153	Material and Supplies			
161	Stores Expense			
162	Prepayments		-	-
171	Accrued Interest and Dividends Receivable		-	
172 *	Rents Receivable			
173 *	Accrued Utility Revenues			
174	Misc. Current and Accrued Assets	F-12	-	-
Total Current and Accrued Assets			\$ 11,167	\$ 13,915

* Not Applicable for Class B Utilities

UTILITY NAME: LAKE PLACID UTILITIES, INC

YEAR OF REPORT 31-Dec-00

**COMPARATIVE BALANCE SHEET
ASSETS AND OTHER DEBITS**

ACCT. NO. (a)	ACCOUNT NAME (b)	REF. PAGE (c)	PREVIOUS YEAR (d)	CURRENT YEAR (e)
	DEFERRED DEBITS			
181	Unamortized Debt Discount & Expense	F-13	\$ _____	\$ _____
182	Extraordinary Property Losses	F-13	_____	_____
183	Preliminary Survey & Investigation Charges		_____	_____
184	Clearing Accounts		_____	_____
185 *	Temporary Facilities		_____	_____
186	Misc. Deferred Debits	F-14	7,425	-
187 *	Research & Development Expenditures		_____	_____
190	Accumulated Deferred Income Taxes		5,756	5,324
Total Deferred Debits			\$ align="right">13,181	\$ align="right">5,324
TOTAL ASSETS AND OTHER DEBITS			\$ align="right"> <u>385,466</u>	\$ align="right"> <u>398,379</u>
* Not Applicable for Class B Utilities				

NOTES TO THE BALANCE SHEET

The space below is provided for important notes regarding the balance sheet.

UTILITY NAME: LAKE PLACID UTILITIES, INC

YEAR OF REPORT 31-Dec-00

**COMPARATIVE BALANCE SHEET
EQUITY CAPITAL AND LIABILITIES**

ACCT. NO. (a)	ACCOUNT NAME (b)	REF. PAGE (c)	PREVIOUS YEAR (d)	CURRENT YEAR (e)
EQUITY CAPITAL				
201	Common Stock Issued	F-15	\$ 1,000	\$ 1,000
204	Preferred Stock Issued	F-15		
202,205 *	Capital Stock Subscribed			
203,206 *	Capital Stock Liability for Conversion			
207 *	Premium on Capital Stock			
209 *	Reduction in Par or Stated Value of Capital Stock			
210 *	Gain on Resale or Cancellation of Reacquired Capital Stock			
211	Other Paid - In Capital		264,156	281,301
212	Discount On Capital Stock			
213	Capital Stock Expense			
214-215	Retained Earnings	F-16	(33,669)	(34,826)
216	Reacquired Capital Stock			
218	Proprietary Capital (Proprietorship and Partnership Only)			
Total Equity Capital			\$ 231,487	\$ 247,475
LONG TERM DEBT				
221	Bonds	F-15		
222 *	Reacquired Bonds			
223	Advances from Associated Companies	F-17		
224	Other Long Term Debt	F-17		
Total Long Term Debt			\$ -	\$ -
CURRENT AND ACCRUED LIABILITIES				
231	Accounts Payable		1,356	1,220
232	Notes Payable	F-18		
233	Accounts Payable to Associated Companies	F-18	(1,980)	5,998
234	Notes Payable to Associated Companies	F-18		
235	Customer Deposits		936	1,056
236	Accrued Taxes	W/S-3	5,000	5,000
237	Accrued Interest	F-19	9	(5)
238	Accrued Dividends			
239	Matured Long Term Debt			
240	Matured Interest			
241	Miscellaneous Current & Accrued Liabilities	F-20		
Total Current & Accrued Liabilities			\$ 5,321	\$ 13,269

* Not Applicable for Class B Utilities

UTILITY NAME: LAKE PLACID UTILITIES, INC

YEAR OF REPORT 31-Dec-00

**COMPARATIVE BALANCE SHEET
EQUITY CAPITAL AND LIABILITIES**

ACCT. NO. (a)	ACCOUNT NAME (b)	REF. PAGE (c)	PREVIOUS YEAR (d)	CURRENT YEAR (e)
DEFERRED CREDITS				
251	Unamortized Premium On Debt	F-13	\$ _____	\$ _____
252	Advances For Construction	F-20	_____	_____
253	Other Deferred Credits	F-21	_____	_____
255	Accumulated Deferred Investment Tax Credits		-	-
Total Deferred Credits			\$ _____ -	\$ _____ -
OPERATING RESERVES				
261	Property Insurance Reserve		\$ _____	\$ _____
262	Injuries & Damages Reserve		_____	_____
263	Pensions and Benefits Reserve		_____	_____
265	Miscellaneous Operating Reserves		_____	_____
Total Operating Reserves			\$ _____ -	\$ _____ -
CONTRIBUTIONS IN AID OF CONSTRUCTION				
271	Contributions in Aid of Construction	F-22	\$ 239,995	\$ 239,995
272	Accumulated Amortization of Contributions in Aid of Construction	F-22	99,604	107,554
Total Net C.I.A.C.			\$ 140,391	\$ 132,441
ACCUMULATED DEFERRED INCOME TAXES				
281	Accumulated Deferred Income Taxes - Accelerated Depreciation		\$ 1,581	\$ 893
282	Accumulated Deferred Income Taxes - Liberalized Depreciation		_____	_____
283	Accumulated Deferred Income Taxes - Other		6,686	4,301
Total Accumulated Deferred Income Tax			\$ 8,267	\$ 5,194
TOTAL EQUITY CAPITAL AND LIABILITIES			\$ 385,466	\$ 398,379

UTILITY NAME: LAKE PLACID UTILITIES, INC

YEAR OF REPORT 31-Dec-00

COMPARATIVE OPERATING STATEMENT

ACCT. NO. (a)	ACCOUNT NAME (b)	REF. PAGE (c)	PREVIOUS YEAR (d)	CURRENT YEAR * (e)
	UTILITY OPERATING INCOME			
400	Operating Revenues	F-3(b)	\$ 111,368	\$ 108,071
469, 530	Less: Guaranteed Revenue and AFPI	F-3(b)		
	Net Operating Revenues		\$ 111,368	\$ 108,071
401	Operating Expenses	F-3(b)	\$ 63,752	\$ 71,556
403	Depreciation Expense:	F-3(b)	\$ 23,250	\$ 25,410
	Less: Amortization of CIAC	F-22	(7,236)	(7,950)
	Net Depreciation Expense		\$ 16,014	\$ 17,460
406	Amortization of Utility Plant Acquisition Adjustment	F-3(b)	(918)	(954)
407	Amortization Expense (Other than CIAC)	F-3(b)	-	645
408	Taxes Other Than Income	W/S-3	10,099	8,390
409	Current Income Taxes	W/S-3	10,530	3,992
410.10	Deferred Federal Income Taxes	W/S-3	(6,105)	(2,295)
410.11	Deferred State Income Taxes	W/S-3	(472)	(346)
411.10	Provision for Deferred Income Taxes - Credit	W/S-3		-
412.10	Investment Tax Credits Deferred to Future Periods	W/S-3		-
412.11	Investment Tax Credits Restored to Operating Income	W/S-3	-	
	Utility Operating Expenses		\$ 92,900	\$ 98,448
	Net Utility Operating Income		\$ 18,468	\$ 9,623
469, 530	Add Back: Guaranteed Revenue and AFPI	F-3(b)		
413	Income From Utility Plant Leased to Others			
414	Gains (losses) From Disposition of Utility Property			
420	Allowance for Funds Used During Construction		894	411
	Total Utility Operating Income [Enter here and on Page F-3(c)]		\$ 19,362	\$ 10,034

* For each account,
Column e should
agree with Cloumns
f, g and h
on F-3(b)

COMPARATIVE OPERATING STATEMENT (Cont'd)

WATER SCHEDULE W-3 * (f)	WASTEWATER SCHEDULE S-3 * (g)	OTHER THAN REPORTING SYSTEMS (h)
\$ 42,236	\$ 65,835	\$ -
\$ 42,236	\$ 65,835	\$ -
\$ 21,237	\$ 50,319	\$ -
13,669 (3,091)	11,741 (4,859)	-
\$ 10,578	\$ 6,882	\$ -
(499)	(455)	-
338	307	-
3,312	5,078	-
8,540	(4,548)	-
(4,909)	2,614	-
(740)	394	-
-	-	-
-	-	-
-	-	-
\$ 37,857	\$ 60,591	\$ -
\$ 4,379	\$ 5,244	\$ -
-	-	-
-	-	-
-	-	-
-	411	-
\$ 4,379	\$ 5,655	\$ -

* Total of Schedules W-3 / S-3 for all rate groups.

COMPARATIVE OPERATING STATEMENT (Cont'd)

ACCT. NO. (a)	ACCOUNT NAME (b)	REF. PAGE (c)	PREVIOUS YEAR (d)	CURRENT YEAR (e)
Total Utility Operating Income [from page F-3(a)]			\$ 19,362	\$ 10,034
OTHER INCOME AND DEDUCTIONS				
415	Revenues-Merchandising, Jobbing, and Contract Deductions		\$	\$
416	Costs & Expenses of Merchandising Jobbing, and Contract Work			
419	Interest and Dividend Income		-	58
421	Nonutility Income			
426	Miscellaneous Nonutility Expenses		-	-
Total Other Income and Deductions			\$ -	\$ 58
TAXES APPLICABLE TO OTHER INCOME				
408.20	Taxes Other Than Income		\$	\$
409.20	Income Taxes			
410.20	Provision for Deferred Income Taxes			
411.20	Provision for Deferred Income Taxes - Credit			
412.20	Investment Tax Credits - Net			
412.30	Investment Tax Credits Restored to Operating Income			
Total Taxes Applicable To Other Income			\$ -	\$ -
INTEREST EXPENSE				
427	Interest Expense	F-19	\$ 10,208	\$ 11,249
428	Amortization of Debt Discount & Expense	F-13		
429	Amortization of Premium on Debt	F-13		
Total Interest Expense			\$ 10,208	\$ 11,249
EXTRAORDINARY ITEMS				
433	Extraordinary Income		\$	\$
434	Extraordinary Deductions			
409.30	Income Taxes, Extraordinary Items			
Total Extraordinary Items			\$ -	\$ -
NET INCOME			\$ 9,154	\$ (1,157)

Explain Extraordinary Income:

NONE

UTILITY NAME: LAKE PLACID UTILITIES, INC

YEAR OF REPORT 31-Dec-00

SCHEDULE OF YEAR END RATE BASE

ACCT. NO. (a)	ACCOUNT NAME (b)	REF. PAGE (c)	WATER UTILITY (d)	WASTEWATER UTILITY (e)
101	Utility Plant In Service	F-7	\$ 299,835	\$ 422,275
	Less:			
	Nonused and Useful Plant (1)			
108	Accumulated Depreciation	F-8	70,217	244,744
110	Accumulated Amortization	F-8	2,723	3,184
271	Contributions In Aid of Construction	F-22	88,358	151,637
252	Advances for Construction	F-20		
Subtotal			\$ 138,537	\$ 22,710
272	Add:			
	Accumulated Amortization of			
	Contributions in Aid of Construction	F-22	25,777	81,777
Subtotal			\$ 164,314	\$ 104,487
	Plus or Minus:			
114	Acquisition Adjustments (2)	F-7	-	-
115	Accumulated Amortization of			
	Acquisition Adjustments (2)	F-7	-	-
	Working Capital Allowance (3)		2,655	6,290
	Other (Specify):			
RATE BASE			\$ 166,969	\$ 110,777
NET UTILITY OPERATING INCOME			\$ 4,379	\$ 5,244
ACHIEVED RATE OF RETURN (Operating Income / Rate Base)			2.62%	4.73%

NOTES :

- (1) Estimate based on the methodology used in the last rate proceeding.
- (2) Include only those Acquisition Adjustments that have been approved by the Commission.
- (3) Calculation consistent with last rate proceeding.
In absence of a rate proceeding, Class A utilities will use the Balance Sheet Method and Class B Utilities will use the One-eighth Operating and Maintenance Expense Method.

**SCHEDULE OF CURRENT COST OF CAPITAL
CONSISTENT WITH THE METHODOLOGY USED IN THE LAST RATE PROCEEDING (1)**

CLASS OF CAPITAL (a)	DOLLAR AMOUNT (2) (b)	PERCENTAGE OF CAPITAL (c)	ACTUAL COST RATES (3) (d)	WEIGHTED COST (c x d) (e)
Common Equity	\$ 127,337	45.85%	11.56%	5.30%
Preferred Stock	-	0.00%	0.00%	0.00%
Long Term Debt	135,642	48.80%	8.56%	4.18%
Customer Deposits	1,056	0.38%	6.00%	0.02%
Tax Credits - Zero Cost	-	0.00%	0.00%	0.00%
Tax Credits - Weighted Cost	-	0.00%	0.00%	0.00%
Deferred Income Taxes	(130)	-0.05%	0.00%	0.00%
Other (Explain) Short Term Debt	13,841	4.98%	14.32%	0.71%
Total	\$ 277,746	100.00%		10.21%

(1) If the utility's capital structure is not used, explain which capital structure is used.

(2) Should equal amounts on Schedule F-6, Column (g).

(3) Mid-point of the last authorized Return On Equity or current leverage formula if none has been established.

Must be calculated using the same methodology used in the last rate
proceeding using current annual report year end amounts and cost rates.

APPROVED RETURN ON EQUITY

Current Commission Return on Equity:	<u>11.56%</u>
Commission order approving Return on Equity:	<u>PSC-96-0910-FOF-WS</u>

APPROVED AFUDC RATE

COMPLETION ONLY REQUIRED IF AFUDC WAS CHARGED DURING YEAR

Current Commission Approved AFUDC rate:	<u>10.25%</u>
Commission order approving AFUDC rate:	<u>PSC-95-1490-FOF-WS</u>

If any utility capitalized any charge in lieu of AFUDC (such as interest only), state the basis of the charge, an explanation as to why AFUDC was not charged and the percentage capitalized.

UTILITY NAME:

LAKE PLACID UTILITIES, INC

YEAR OF REPORT
31-Dec-00

SCHEDULE OF CAPITAL STRUCTURE ADJUSTMENTS
CONSISTENT WITH THE METHODOLOGY USED IN THE LAST RATE PROCEEDING

CLASS OF CAPITAL (a)	PER BOOK BALANCE (b)	NON-UTILITY ADJUSTMENTS (c)	NON- JURISDICTIONAL ADJUSTMENTS (d)	OTHER (I) ADJUSTMENTS SPECIFIC (e)	OTHER (I) ADJUSTMENTS PRO RATA (f)	CAPITAL STRUCTURE (g)
Common Equity	\$ 69,945,301	\$ 0	\$ 0	\$ 0	\$ (69,817,964)	\$ 127,337
Preferred Stock		0	0	0	-	-
Long Term Debt	73,400,000	0	0	0	(73,264,358)	135,642
Customer Deposits	1,056	0	0	0	-	1,056
Tax Credits - Zero Cost	-	0	0	0	-	-
Tax Credits - Weighted Cost	-	0	0	0	-	-
Deferred Inc. Taxes	(130)	0	0	0	-	(130)
Other (Explain)	7,517,000	0	0	0	(7,503,159)	13,841
Total	\$ 150,863,227	\$ 0	\$ 0	\$ 0	\$ (150,585,481)	\$ 277,746

(1) Explain below all adjustments made in Columns (e) and (f):

NOT APPLICABLE

UTILITY NAME: LAKE PLACID UTILITIES, INC

YEAR OF REPORT
31-Dec-00

UTILITY PLANT
ACCOUNTS 101 - 106

ACCT. (a)	DESCRIPTION (b)	WATER (c)	WASTEWATER (d)	OTHER THAN REPORTING SYSTEMS (e)	TOTAL (f)
101	Plant Accounts: Utility Plant In Service	\$ 299,835	\$ 422,275	\$	\$ 722,110
102	Utility Plant Leased to Other				-
103	Property Held for Future Use				-
104	Utility Plant Purchased or Sold				-
105	Construction Work in Progress	-	-		-
106	Completed Construction Not Classified				
	Total Utility Plant	\$ 299,835	\$ 422,275	\$ -	\$ 722,110

UTILITY PLANT ACQUISITION ADJUSTMENTS
ACCOUNTS 114 AND 115

Report each acquisition adjustment and related accumulated amortization separately.
For any acquisition adjustments approved by the Commission, include the Order Number.

ACCT. (a)	DESCRIPTION (b)	WATER (c)	WASTEWATER (d)	OTHER THAN REPORTING SYSTEMS (e)	TOTAL (f)
114	Acquisition Adjustment	\$ (11,462)	\$ (11,594)	\$ -	\$ (23,056)
					-
					-
					-
					-
	Total Plant Acquisition Adjustments	\$ (11,462)	\$ (11,594)	\$ -	\$ (23,056)
115	Accumulated Amortization Accruals charged during year	\$ 499	\$ 455	\$	\$ 954
					-
					-
					-
					-
	Total Accumulated Amortization	\$ 499	\$ 455	\$ -	\$ 954
	Net Acquisition Adjustments	\$ (10,963)	\$ (11,139)	\$ -	\$ (22,102)

UTILITY NAME: **LAKE PLACID UTILITIES, INC**

YEAR OF REPORT 31-Dec-00

ACCUMULATED DEPRECIATION (ACCT. 108) AND AMORTIZATION (ACCT. 110)

DESCRIPTION (a)	WATER (b)	WASTEWATER (c)	OTHER THAN REPORTING SYSTEMS (d)	TOTAL (e)
ACCUMULATED DEPRECIATION Account 108				
Balance first of year	\$ 60,496	\$ 233,003	\$	\$ 293,499
Credit during year:				
Accruals charged to:				
Account 108.1 (1)	\$ 13,669	\$ 11,741	\$	\$ 25,410
Account 108.2 (2)				-
Account 108.3 (2)				-
Other Accounts (specify):				-
	(3,948)	-		(3,948)
				-
Salvage				-
Other Credits (Specify):				
Total Credits	\$ 9,721	\$ 11,741	\$ -	\$ 21,462
Debits during year:				
Book cost of plant retired	-	-		-
Cost of Removal				-
Other Debits (specify):				-
Total Debits	\$ -	\$ -	\$ -	\$ -
Balance end of year	\$ 70,217	\$ 244,744	\$ -	\$ 314,961
ACCUMULATED AMORTIZATION Account 110				
Balance first of year	\$ 2,385	\$ 2,877	\$	\$ 5,262
Credit during year:				
Accruals charged to:				
	\$ 338	\$ 307	\$	\$ 645
Account 110.2 (2)				-
Other Accounts (specify):				
Total credits	\$ 338	\$ 307	\$ -	\$ 645
Debits during year:				
Book cost of plant retired				-
Other debits (specify):				
Total Debits	\$ -	\$ -	\$ -	\$ -
Balance end of year	\$ 2,723	\$ 3,184	\$ -	\$ 5,907

- (1) Account 108 for Class B utilities.
(2) Not applicable for Class B utilities.
(3) Account 110 for Class B utilities.

UTILITY NAME: LAKE PLACID UTILITIES, INC

YEAR OF REPORT 31-Dec-00

**REGULATORY COMMISSION EXPENSE
AMORTIZATION OF RATE CASE EXPENSE (ACCOUNTS 666 AND 766)**

DESCRIPTION OF CASE (DOCKET NO.) (a)	EXPENSE INCURRED DURING YEAR (b)	CHARGED OFF DURING YEAR	
		ACCT. (d)	AMOUNT (e)
NONE	\$ _____	_____	\$ _____
_____	_____	_____	_____
_____	_____	_____	_____
Total	\$ _____	_____	\$ _____

NONUTILITY PROPERTY (ACCOUNT 121)

Report separately each item of property with a book cost of \$25,000 or more included in Account 121.

Other Items may be grouped by classes of property.

DESCRIPTION (a)	BEGINNING YEAR (b)	ADDITIONS (c)	REDUCTIONS (d)	ENDING YEAR BALANCE (e)
NONE	\$ _____	\$ _____	\$ _____	\$ _____
_____	_____	_____	_____	_____
_____	_____	_____	_____	_____
_____	_____	_____	_____	_____
Total Nonutility Property	\$ _____	\$ _____	\$ _____	\$ _____

SPECIAL DEPOSITS (ACCOUNTS 132 AND 133)

Report hereunder all special deposits carried in Accounts 132 and 133.

DESCRIPTION OF SPECIAL DEPOSITS (a)	YEAR END BOOK COST (b)
SPECIAL DEPOSITS (Account 132): NONE	\$ _____ -
_____	_____
_____	_____
Total Special Deposits	\$ _____ -
OTHER SPECIAL DEPOSITS (Account 133): NONE	\$ _____
_____	_____
_____	_____
Total Other Special Deposits	\$ _____ -

UTILITY NAME: LAKE PLACID UTILITIES, INC

YEAR OF REPORT 31-Dec-00

INVESTMENTS AND SPECIAL FUNDS
ACCOUNTS 123 - 127

Report hereunder all investments and special funds carried in Accounts 123 through 127.

DESCRIPTION OF SECURITY OR SPECIAL FUND (a)	FACE OR PAR VALUE (b)	YEAR END BOOK COST (c)
INVESTMENT IN ASSOCIATED COMPANIES (Account 123): <u>NONE</u> <hr/> <hr/> <hr/> <hr/> <hr/> <hr/>	\$ <hr/> <hr/> <hr/> <hr/> <hr/> <hr/>	\$ <hr/> <hr/> <hr/> <hr/> <hr/> <hr/>
Total Investment in Associated Companies		\$ <hr/> <hr/> <hr/>
UTILITY INVESTMENTS (Account 124): <u>NONE</u> <hr/> <hr/> <hr/> <hr/> <hr/> <hr/>	\$ <hr/> <hr/> <hr/> <hr/> <hr/> <hr/>	\$ <hr/> <hr/> <hr/> <hr/> <hr/> <hr/>
Total Utility Investment		\$ <hr/> <hr/> <hr/>
OTHER INVESTMENTS (Account 125): <u>NONE</u> <hr/> <hr/> <hr/> <hr/> <hr/> <hr/>	\$ <hr/> <hr/> <hr/> <hr/> <hr/> <hr/>	\$ <hr/> <hr/> <hr/> <hr/> <hr/> <hr/>
Total Other Investment		\$ <hr/> <hr/> <hr/>
SPECIAL FUNDS (Class A Utilities: Accounts 126 and 127; Class B Utilities: Account 127): <u>NONE</u> <hr/> <hr/> <hr/> <hr/> <hr/> <hr/>		\$ <hr/> <hr/> <hr/> <hr/> <hr/> <hr/>
Total Special Funds		\$ <hr/> <hr/> <hr/>

UTILITY NAME: LAKE PLACID UTILITIES, INC

YEAR OF REPORT 31-Dec-00

ACCOUNTS AND NOTES RECEIVABLE - NET
ACCOUNTS 141 - 144

Report hereunder all accounts and notes receivable included in Accounts 141, 142, and 144. Amounts included in
Amounts included in Accounts 142 and 144 should be listed individually.

DESCRIPTION (a)		TOTAL (b)
CUSTOMER ACCOUNTS RECEIVABLE (Account 141):		
Water	\$ 5,907	
Wastewater	8,008	
Other		
Total Customer Accounts Receivable		\$ 13,915
OTHER ACCOUNTS RECEIVABLE (Account 142):		
_____	\$ _____	
_____	_____	
_____	_____	
Total Other Accounts Receivable		\$ -
NOTES RECEIVABLE (Account 144):		
_____	\$ _____	
_____	_____	
_____	_____	
Total Notes Receivable		\$ -
Total Accounts and Notes Receivable		\$ 13,915
ACCUMULATED PROVISION FOR UNCOLLECTIBLE ACCOUNTS (Account 143)		
Balance first of year	\$ -	
Add: Provision for uncollectibles for current year	\$ _____	
Collection of accounts previously written off	_____	
Utility Accounts	_____	
Others	_____	
_____	_____	
_____	_____	
Total Additions	\$ -	
Deduct accounts written off during year:		
Utility Accounts	_____	
Others	_____	
_____	_____	
_____	_____	
Total accounts written off	\$ -	
Balance end of year		\$ -
TOTAL ACCOUNTS AND NOTES RECEIVABLE - NET		\$ 13,915

UTILITY NAME: LAKE PLACID UTILITIES, INC

YEAR OF REPORT 31-Dec-00

ACCOUNTS RECEIVABLE FROM ASSOCIATED COMPANIES
ACCOUNT 145

Report each account receivable from associated companies separately.

DESCRIPTION (a)	TOTAL (b)
NONE	\$
Total	\$

NOTES RECEIVABLE FROM ASSOCIATED COMPANIES
ACCOUNT 146

Report each note receivable from associated companies separately.

DESCRIPTION (a)	INTEREST RATE (b)	TOTAL (c)
NONE	%	\$
	%	
	%	
	%	
	%	
	%	
	%	
	%	
	%	
Total		\$

MISCELLANEOUS CURRENT AND ACCRUED ASSETS
ACCOUNT 174

DESCRIPTION - Provide itemized listing (a)	BALANCE END OF YEAR (b)
NONE	\$
Total Miscellaneous Current and Accrued Liabilities	\$

UTILITY NAME: LAKE PLACID UTILITIES, INC

YEAR OF REPORT 31-Dec-00

**UNAMORTIZED DEBT DISCOUNT AND EXPENSE AND PREMIUM ON DEBT
ACCOUNTS 181 AND 251**

Report the net discount and expense or premium separately for each security issue.

DESCRIPTION (a)	AMOUNT WRITTEN OFF DURING YEAR (b)	YEAR END BALANCE (c)
UNAMORTIZED DEBT DISCOUNT AND EXPENSE (Account 181): NONE	\$ _____	\$ _____
_____	_____	_____
_____	_____	_____
_____	_____	_____
Total Unamortized Debt Discount and Expense	\$ _____	\$ _____
UNAMORTIZED PREMIUM ON DEBT (Account 251):	\$ _____	\$ _____
_____	_____	_____
_____	_____	_____
_____	_____	_____
Total Unamortized Premium on Debt	\$ _____	\$ _____

**EXTRAORDINARY PROPERTY LOSSES
ACCOUNT 182**

Report each item separately.

DESCRIPTION (a)	TOTAL (b)
NONE	\$ _____
_____	_____
_____	_____
Total Extraordinary Property Losses	\$ _____

UTILITY NAME: LAKE PLACID UTILITIES, INC

YEAR OF REPORT 31-Dec-00

MISCELLANEOUS DEFERRED DEBITS
ACCOUNT 186

DESCRIPTION - Provide itemized listing (a)	AMOUNT WRITTEN OFF DURING YEAR (b)	YEAR END BALANCE (c)
DEFERRED RATE CASE EXPENSE (Class A Utilities: Account 186.1)		
RATE CASE (NONE)	\$ -	\$ -
_____	_____	_____
_____	_____	_____
_____	_____	_____
Total Deferred Rate Case Expense	\$ -	\$ -
OTHER DEFERRED DEBITS (Class A Utilities: Account 186.2):		
OTHER DEFERRED MAINTENANCE (NONE)	\$ -	\$ -
_____	_____	_____
_____	_____	_____
_____	_____	_____
_____	_____	_____
_____	_____	_____
_____	_____	_____
_____	_____	_____
Total Other Deferred Debits	\$ -	\$ -
REGULATORY ASSETS (Class A Utilities: Account. 186.3):		
NONE	\$ -	\$ -
_____	_____	_____
_____	_____	_____
_____	_____	_____
_____	_____	_____
_____	_____	_____
_____	_____	_____
_____	_____	_____
Total Regulatory Assets	\$ -	\$ -
TOTAL MISCELLANEOUS DEFERRED DEBITS	\$ -	\$ -

UTILITY NAME: LAKE PLACID UTILITIES, INC

YEAR OF REPORT

31-Dec-00

**CAPITAL STOCK
ACCOUNTS 201 AND 204***

DESCRIPTION (a)	RATE (b)	TOTAL (c)
COMMON STOCK		
Par or stated value per share	_____ %	\$ _____ 1
Shares authorized		_____ -
Shares issued and outstanding		_____ 1,000
Total par value of stock issued	_____ %	\$ _____ 1,000
Dividends declared per share for year	_____ %	\$ _____ -
PREFERRED STOCK		
Par or stated value per share	_____ %	\$ _____ -
Shares authorized		_____ -
Shares issued and outstanding		_____ -
Total par value of stock issued	_____ %	\$ _____ -
Dividends declared per share for year	_____ %	\$ _____ -

* Account 204 not applicable for Class B utilities.

**BONDS
ACCOUNT 221**

DESCRIPTION OF OBLIGATION (INCLUDING DATE OF ISSUE AND DATE OF MATURITY) (a)	INTEREST		PRINCIPAL AMOUNT PER BALANCE SHEET (d)
	ANNUAL RATE (b)	FIXED OR VARIABLE * (c)	
NONE	_____ %		\$ _____
	_____ %		_____
	_____ %		_____
	_____ %		_____
	_____ %		_____
	_____ %		_____
	_____ %		_____
	_____ %		_____
	_____ %		_____
	_____ %		_____
Total			\$ _____

* For variable rate obligations, provide the basis for the rate. (i.e.. prime + 2%, etc.)

UTILITY NAME: LAKE PLACID UTILITIES, INC

YEAR OF REPORT
31-Dec-00

STATEMENT OF RETAINED EARNINGS

1. Dividends should be shown for each class and series of capital stock. Show amounts as dividends per share.
2. Show separately the state and federal income tax effect of items shown in Account No. 439.

ACCT. NO. (a)	DESCRIPTION (b)	AMOUNTS (c)
215	Unappropriated Retained Earnings: Balance Beginning of Year	\$ (33,669)
439	Changes to Account: Adjustments to Retained Earnings (requires Commission approval prior to use): Credits: _____	\$ _____ _____
	Total Credits:	\$ _____
	Debits: _____	\$ _____ _____
	Total Debits:	\$ _____
435	Balance Transferred from Income	\$ (1,157)
436	Appropriations of Retained Earnings: _____ _____	_____ _____
	Total Appropriations of Retained Earnings	\$ _____
437	Dividends Declared: Preferred Stock Dividends Declared _____	_____ _____
438	Common Stock Dividends Declared _____	_____ _____
	Total Dividends Declared	\$ _____
215	Year end Balance	\$ _____
214	Appropriated Retained Earnings (state balance and purpose of each appropriated amount at year end): _____ _____ _____	_____ _____ _____
214	Total Appropriated Retained Earnings	\$ _____
Total Retained Earnings		\$ (34,826)
Notes to Statement of Retained Earnings:		

YEAR OF REPORT
31-Dec-00

Report each advance separately.

OTHER LONG-TERM DEBT
ACCOUNT 224

* For variable rate obligations, provide the basis for the rate. (i.e., prime + 2%, etc.)

UTILITY NAME: LAKE PLACID UTILITIES, INC

YEAR OF REPORT

31-Dec-00

**NOTES PAYABLE
ACCOUNTS 232 AND 234**

DESCRIPTION OF OBLIGATION (INCLUDING DATE OF ISSUE AND DATE OF MATURITY) (a)	INTEREST		PRINCIPAL AMOUNT PER BALANCE SHEET (d)
	ANNUAL RATE (b)	FIXED OR VARIABLE * (c)	
NOTES PAYABLE (Account 232): NONE			\$
	%		
	%		
	%		
	%		
	%		
	%		
	%		
	%		
	%		
	%		
Total Account 232			\$
NOTES PAYABLE TO ASSOC. COMPANIES (Account 234): NONE			\$
	%		
	%		
	%		
	%		
	%		
	%		
	%		
	%		
	%		
	%		
Total Account 234			\$

* For variable rate obligations, provide the basis for the rate. (i.e.. prime + 2%, etc.)

**ACCOUNTS PAYABLE TO ASSOCIATED COMPANIES
ACCOUNT 233**

Report each account payable separately.

DESCRIPTION (a)	TOTAL (b)
WATER SERVICE CORPORATION	\$ (5,998)
Total	\$ (5,998)

ACCRUED INTEREST AND EXPENSE

ACCOUNTS 237 AND 427

DESCRIPTION OF DEBIT (a)	BALANCE BEGINNING OF YEAR (b)	INTEREST ACCRUED DURING YEAR		INTEREST PAID DURING YEAR (e)	BALANCE END OF YEAR (f)
		ACCT. DEBIT (c)	AMOUNT (d)		
ACCOUNT NO. 237.1 - Accrued Interest on Long Term Debt	\$		\$	\$	\$
UTILITIES INC INTERCOMPANY INTEREST	-		11,249	11,249	-
Total Account 237.1	\$ -		\$ 11,249	\$ 11,249	\$ -
ACCOUNT NO. 237.2 - Accrued Interest on Other Liabilities					
Customer Deposits		427			
MISC ITEMS	(9)		14		- 5
Total Account 237.2	\$ (9)		\$ 14	\$ -	\$ 5
Total Account 237 (1)	\$ (9)		\$ 11,263	\$ 11,249	\$ 5
INTEREST EXPENSED:					
Total accrual Account 237		237	\$ 11,249		(1) Must agree to F-2 (a), Beginning and Ending Balance of Accrued Interest.
Less Capitalized Interest Portion of AFUDC:			-		(2) Must agree to F-3 (c), Current Year Interest Expense
Net Interest Expensed to Account No. 427 (2)			\$ 11,249		

YEAR OF REPORT
31-Dec-00

DESCRIPTION - Provide itemized listing (a)	BALANCE END OF YEAR (b)
NONE	\$ _____

Total Miscellaneous Current and Accrued Liabilities	\$ _____

NAME OF PAYOR * (a)	BALANCE BEGINNING OF YEAR (b)	DEBITS		CREDITS (e)	BALANCE END OF YEAR (f)
		ACCT. DEBIT (c)	AMOUNT (d)		
NONE	\$ _____		\$ _____	\$ _____	\$ -
Total	\$ _____		\$ _____	\$ _____	\$ -

* Report advances separately by reporting group, designating water or wastewater in column (a).

UTILITY NAME: LAKE PLACID UTILITIES, INC

YEAR OF REPORT 31-Dec-00

OTHER DEFERRED CREDITS
ACCOUNT 253

DESCRIPTION - Provide itemized listing (a)	AMOUNT WRITTEN OFF DURING YEAR (b)	YEAR END BALANCE (c)
REGULATORY LIABILITIES (Class A Utilities: Account 253.1):		
<u>NONE</u>	\$ _____	\$ _____
_____	_____	_____
_____	_____	_____
_____	_____	_____
Total Regulatory Liabilities	\$ _____	\$ _____
OTHER DEFERRED LIABILITIES (Class A Utilities: Account 253.2):		
_____	\$ _____	\$ _____
_____	_____	_____
_____	_____	_____
_____	_____	_____
_____	_____	_____
_____	_____	_____
_____	_____	_____
Total Other Deferred Liabilities	\$ _____	\$ _____
TOTAL OTHER DEFERRED CREDITS	\$ _____	\$ _____

UTILITY NAME: LAKE PLACID UTILITIES, INC

YEAR OF REPORT 31-Dec-00

**CONTRIBUTIONS IN AID OF CONSTRUCTION
ACCOUNT 271**

DESCRIPTION (a)	WATER (W-7) (b)	WASTEWATER (S-7) (c)	W & WW OTHER THAN SYSTEM REPORTING (d)	TOTAL (e)
Balance first of year	\$ <u>88,358</u>	\$ <u>151,637</u>	\$ <u>-</u>	\$ <u>239,995</u>
Add credits during year:	\$ <u>-</u>	\$ <u>-</u>	\$ <u>-</u>	\$ <u>-</u>
Less debit charged during the year	\$ <u>-</u>	\$ <u>-</u>	\$ <u>-</u>	\$ <u>-</u>
Total Contribution In Aid of Construction	\$ <u>88,358</u>	\$ <u>151,637</u>	\$ <u>-</u>	\$ <u>239,995</u>

**ACCUMULATED AMORTIZATION OF CONTRIBUTIONS IN AID OF CONSTRUCTION
ACCOUNT 272**

DESCRIPTION (a)	WATER (W-8(a)) (b)	WASTEWATER (S-8(a)) (c)	W & WW OTHER THAN SYSTEM REPORTING (d)	TOTAL (e)
Balance first of year	\$ <u>22,686</u>	\$ <u>76,918</u>	\$ <u>-</u>	\$ <u>99,604</u>
Debits during the year:	\$ <u>3,091</u>	\$ <u>4,859</u>	\$ <u>-</u>	\$ <u>7,950</u>
Credits during the year	\$ <u>-</u>	\$ <u>-</u>	\$ <u>-</u>	\$ <u>-</u>
Total Accumulated Amortization of Contributions In Aid of Construction	\$ <u>25,777</u>	\$ <u>81,777</u>	\$ <u>-</u>	\$ <u>107,554</u>

UTILITY NAME: LAKE PLACID UTILITIES, INC

YEAR OF REPORT

31-Dec-00

**RECONCILIATION OF REPORTED NET INCOME WITH TAXABLE
INCOME FOR FEDERAL INCOME TAXES (UTILITY OPERATIONS)**

1. The reconciliation should include the same detail as furnished on Schedule M-1 of the federal tax return for the year. The reconciliation shall be submitted even though there is no taxable income for the year. Descriptions should clearly indicate the nature of each reconciling amount and show the computations of all tax accruals.

2. If the utility is a member of a group which files a consolidated federal tax return, reconcile reported net income with taxable net income as if a separate return were to be filed, indicating intercompany amounts to be eliminated in such consolidated return. State names of group members, tax assigned to each group member, and basis of allocation, assignments or sharing of the consolidated tax among the group members.

DESCRIPTION (a)	REF. NO. (b)	AMOUNT (c)
Net income for the year	F-3(c)	\$ (1,157)
Reconciling items for the year:		
Taxable income not reported on books:		
Tap Fees		
Deductions recorded on books not deducted for return:		
Net Change - Deferred Maintenance		(86)
Net Change - Rate Case		7,339
Excess Tax Depreciation over Book Depreciation		(583)
Current FIT		3,992
Deferred FIT		(2,295)
Deferred SIT		(346)
Income recorded on books not included in return:		
Turnaround of Prior Year's - Deferred Maintenance		
Interest During Construction		(188)
Turnaround of Prior Year's - Rate Case		
Deduction on return not charged against book income:		
Organization Exp		4,893
Federal tax net income		\$ 11,569

Computation of tax :

11,569

34%

3,933

**WATER
OPERATION
SECTION**

LAKE PLACID UTILITIES, INC

YEAR OF REPORT

31-Dec-00

WATER LISTING OF SYSTEM GROUPS

List below the name of each reporting system and its certificate number. Those systems which have been consolidated under the same tariff should be assigned a group number. Each individual system which has not been consolidated should be assigned its own group number.

The water financial schedules (W-2 through W-10) should be filed for the group in total.

The water engineering schedules (W-11 through W-15) must be filed for each system in the group.

All of the following water pages (W-2 through W-15) should be completed for each group and arranged by group number.

[illegible]

UTILITY NAME: LAKE PLACID UTILITIES, INC

YEAR OF REPORT 31-Dec-00

SYSTEM NAME / COUNTY : Highland County

SCHEDULE OF YEAR END WATER RATE BASE

ACCT. NO. (a)	ACCOUNT NAME (b)	REFERENCE PAGE (c)	WATER UTILITY (d)
101	Utility Plant In Service	W-4(b)	\$ 299,835
	Less:		
	Nonused and Useful Plant (1)		
108	Accumulated Depreciation	W-6(b)	70,217
110	Accumulated Amortization	F-8	2,723
271	Contributions In Aid of Construction	W-7	88,358
252	Advances for Construction	F-20	-
Subtotal			\$ 138,537
272	Add:		
	Accumulated Amortization of Contributions in Aid of Construction	W-8(a)	\$ 25,777
Subtotal			\$ 164,314
	Plus or Minus:		
114	Acquisition Adjustments (2)	F-7	-
115	Accumulated Amortization of Acquisition Adjustments (2)	F-7	-
	Working Capital Allowance (3)		2,655
	Other (Specify):		
WATER RATE BASE			\$ 166,969
WATER OPERATING INCOME		W-3	\$ 4,379
ERN (Water Operating Income / Water Rate Base)			2.62%

NOTES : (1) Estimate based on the methodology used in the last rate proceeding.

(2) Include only those Acquisition Adjustments that have been approved by the Commission.

(3) Calculation consistent with last rate proceeding.

In absence of a rate proceeding, Class A utilities will use the Balance Sheet Method and Class B Utilities will use the One-eighth Operating and Maintenance Expense Method.

UTILITY NAME: LAKE PLACID UTILITIES, INC

YEAR OF REPORT 31-Dec-00

SYSTEM NAME / COUNTY : Highland County**WATER OPERATING STATEMENT**

ACCT. NO. (a)	ACCOUNT NAME (b)	REFERENCE PAGE (c)	CURRENT YEAR (d)
	UTILITY OPERATING INCOME		
400	Operating Revenues	W-9	\$ 42,236
469	Less: Guaranteed Revenue and AFPI	W-9	
	Net Operating Revenues		\$
401	Operating Expenses	W-10(a)	\$ 21,237
403	Depreciation Expense	W-6(a)	13,669
	Less: Amortization of CIAC	W-8(a)	(3,091)
	Net Depreciation Expense		\$ 10,578
406	Amortization of Utility Plant Acquisition Adjustment	F-7	(499)
407	Amortization Expense (Other than CIAC)	F-8	338
408.10	Taxes Other Than Income		2,018
	Utility Regulatory Assessment Fee		
408.11	Property Taxes		895
408.12	Payroll Taxes		399
408.13	Other Taxes and Licenses		-
408	Total Taxes Other Than Income		\$ 3,312
409.1	Income Taxes		8,540
410.10	Deferred Federal Income Taxes		(4,909)
410.11	Deferred State Income Taxes		(740)
411.10	Provision for Deferred Income Taxes - Credit		
412.10	Investment Tax Credits Deferred to Future Periods		
412.11	Investment Tax Credits Restored to Operating Income		
	Utility Operating Expenses		\$ 37,857
	Utility Operating Income		\$ 4,379
	Add Back:		
469	Guaranteed Revenue (and AFPI)	W-9	\$
413	Income From Utility Plant Leased to Others		
414	Gains (losses) From Disposition of Utility Property		
420	Allowance for Funds Used During Construction		-
	Total Utility Operating Income		\$ 4,379

YEAR OF REPORT
31-Dec-00

UTILITY NAME: LAKE PLACID UTILITIES, INC

SYSTEM NAME / COUNTY Highland County

WATER UTILITY PLANT ACCOUNTS

ACCT. NO. (a)	ACCOUNT NAME (b)	PREVIOUS YEAR (c)	ADDITIONS (d)	RETIREMENTS (e)	CURRENT YEAR (f)
301	Organization	\$ 13,624	\$ -	\$ -	\$ 13,624
302	Franchises	-	-	-	-
303	Land and Land Rights	2,707	-	-	2,707
304	Structures and Improvements	30,224	-	-	30,224
305	Collecting and Impounding Reservoirs	-	-	-	-
306	Lake, River and Other Intakes	-	-	-	-
307	Wells and Springs	20,012	-	-	20,012
308	Infiltration Galleries and Tunnels	-	-	-	-
309	Supply Mains	-	-	-	-
310	Power Generation Equipment	-	-	-	-
311	Pumping Equipment	63,754	9,792	-	73,546
320	Water Treatment Equipment	6,252	3,112	-	9,364
330	Distribution Reservoirs and Standpipes	27,629	-	-	27,629
331	Transmission and Distribution Mains	49,324	-	-	49,324
333	Services	25,178	-	-	25,178
334	Meters and Meter Installations	16,887	103	-	16,990
335	Hydrants	1,200	-	-	1,200
336	Backflow Prevention Devices	-	-	-	-
339	Other Plant Miscellaneous Equipment	-	-	-	-
340	Office Furniture and Equipment	-	-	-	-
341	Transportation Equipment	-	-	-	-
342	Stores Equipment	-	-	-	-
343	Tools, Shop and Garage Equipment	419	-	-	419
344	Laboratory Equipment	361	-	-	361
345	Power Operated Equipment	-	-	-	-
346	Communication Equipment	553	-	-	553
347	Miscellaneous Equipment	-	-	-	-
348	Other Tangible Plant	27,186	1,518	-	28,704
TOTAL WATER PLANT		\$ 285,310	\$ 14,525	\$ -	\$ 299,835

NOTE: Any adjustments made to reclassify property from one account to another must be footnoted.

W-4(a)

GROUP

UTILITY NAME: LAKE PLACID UTILITIES, INC

SYSTEM NAME / COUNTY Highland County

WATER UTILITY PLANT MATRIX

ACCT. NO. (a)	ACCOUNT NAME (b)	CURRENT YEAR (c)	.1 INTANGIBLE PLANT (d)	.2 SOURCE OF SUPPLY AND PUMPING PLANT (e)	.3 WATER TREATMENT PLANT (f)	.4 TRANSMISSION AND DISTRIBUTION PLANT (g)	.5 GENERAL PLANT (h)
301	Organization	\$ 13,624	\$ 13,624				
302	Franchises	-	-				
303	Land and Land Rights	2,707		2,707			
304	Structures and Improvements	30,224		30,224			
305	Collecting and Impounding Reservoirs	-		-			
306	Lake, River and Other Intakes	-		-			
307	Wells and Springs	20,012		20,012			
308	Infiltration Galleries and Tunnels	-		-			
309	Supply Mains	-		-			
310	Power Generation Equipment	-		-			
311	Pumping Equipment	73,546		73,546			
320	Water Treatment Equipment	9,364			9,364		
330	Distribution Reservoirs and Standpipes	27,629				27,629	
331	Transmission and Distribution Mains	49,324				49,324	
333	Services	25,178				25,178	
334	Meters and Meter Installations	16,990				16,990	
335	Hydrants	1,200				1,200	
336	Backflow Prevention Devices	-				-	
339	Other Plant Miscellaneous Equipment	-				-	
340	Office Furniture and Equipment	-					
341	Transportation Equipment	-					
342	Stores Equipment	-					
343	Tools, Shop and Garage Equipment	419					419
344	Laboratory Equipment	361					361
345	Power Operated Equipment	-					-
346	Communication Equipment	553					553
347	Miscellaneous Equipment	-					-
348	Other Tangible Plant	28,704					28,704
TOTAL WATER PLANT		\$ 299,835	\$ 13,624	\$ 126,489	\$ 9,364	\$ 120,321	\$ 30,037

W-4(b)
GROUP

UTILITY NAME: LAKE PLACID UTILITIES, INC

YEAR OF REPORT 31-Dec-00

SYSTEM NAME / COUNTY : Highland County

BASIS FOR WATER DEPRECIATION CHARGES

ACCT. NO. (a)	ACCOUNT NAME (b)	AVERAGE SERVICE LIFE IN YEARS (c)	AVERAGE NET SALVAGE IN PERCENT (d)	DEPRECIATION RATE APPLIED IN PERCENT (100% - d) / c (e)
304	Structures and Improvements			3.03%
305	Collecting and Impounding Reservoirs			
306	Lake, River and Other Intakes			
307	Wells and Springs			3.33%
308	Infiltration Galleries and Tunnels			
309	Supply Mains			
310	Power Generation Equipment			
311	Pumping Equipment			5.00%
320	Water Treatment Equipment			4.55%
330	Distribution Reservoirs and Standpipes			2.70%
331	Transmission and Distribution Mains			2.33%
333	Services			2.50%
334	Meters and Meter Installations			5.00%
335	Hydrants			2.22%
336	Backflow Prevention Devices			
339	Other Plant Miscellaneous Equipment			
340	Office Furniture and Equipment			
341	Transportation Equipment			
342	Stores Equipment			
343	Tools, Shop and Garage Equipment			6.25%
344	Laboratory Equipment			6.67%
345	Power Operated Equipment			
346	Communication Equipment			
347	Miscellaneous Equipment			
348	Other Tangible Plant			
Water Plant Composite Depreciation Rate *				

* If depreciation rates prescribed by this Commission are on a total composite basis, entries should be made on this line only.

YEAR OF REPORT
31-Dec-00

UTILITY NAME: LAKE PLACID UTILITIES, INC

SYSTEM NAME / COUNTY : Highland County

ANALYSIS OF ENTRIES IN WATER ACCUMULATED DEPRECIATION

ACCT. NO. (a)	ACCOUNT NAME (b)	BALANCE AT BEGINNING OF YEAR (c)	ACCRUALS (d)	OTHER CREDITS * (e)	TOTAL CREDITS (d + e) (f)
304	Structures and Improvements	\$ 7,024	\$ 916	\$ -	\$ 916
305	Collecting and Impounding Reservoirs			-	-
306	Lake, River and Other Intakes			-	-
307	Wells and Springs	7,580	666	-	666
308	Infiltration Galleries and Tunnels			-	-
309	Supply Mains			-	-
310	Power Generation Equipment			-	-
311	Pumping Equipment	9,587	3,320	-	3,320
320	Water Treatment Equipment	1,739	284	-	284
330	Distribution Reservoirs and Standpipes	3,740	746	-	746
331	Transmission and Distribution Mains	6,669	1,150	-	1,150
333	Services	5,025	630	-	630
334	Meters and Meter Installations	5,120	847	-	847
335	Hydrants	314	27	-	27
336	Backflow Prevention Devices			-	-
339	Other Plant Miscellaneous Equipment			-	-
340	Office Furniture and Equipment	-		-	-
341	Transportation Equipment	-	-	-	-
342	Stores Equipment			-	-
343	Tools, Shop and Garage Equipment	210	80	(54)	26
344	Laboratory Equipment	121	24	-	24
345	Power Operated Equipment			-	-
346	Communication Equipment	221	73	(17)	56
347	Miscellaneous Equipment			-	-
348	Other Tangible Plant	13,146	4,906	(3,877)	1,029
TOTAL WATER ACCUMULATED DEPRECIATION		\$ 60,496	\$ 13,669	\$ (3,948)	\$ 9,721

* Specify nature of transaction
Use () to denote reversal entries.

OTHER CREDITS column (E) * are due to allocation of UIF plant

W-6(a)
GROUP

UTILITY NAME: LAKE PLACID UTILITIES, INC

SYSTEM NAME / COUNTY Highland County

ANALYSIS OF ENTRIES IN WATER ACCUMULATED DEPRECIATION (CONT'D)

ACCT. NO.	ACCOUNT NAME (b)	PLANT RETIRED (g)	SALVAGE AND INSURANCE (h)	COST OF REMOVAL AND OTHER CHARGES (i)	TOTAL CHARGES (g-h+i) (j)	BALANCE AT END OF YEAR (c+f-k) (l)
304	Structures and Improvements	\$ -	\$ -	\$ -	\$ -	\$ 7,940
305	Collecting and Impounding Reservoirs	-	-	-	-	-
306	Lake, River and Other Intakes	-	-	-	-	-
307	Wells and Springs	-	-	-	-	8,246
308	Infiltration Galleries and Tunnels	-	-	-	-	-
309	Supply Mains	-	-	-	-	-
310	Power Generation Equipment	-	-	-	-	-
311	Pumping Equipment	-	-	-	-	12,907
320	Water Treatment Equipment	-	-	-	-	2,023
330	Distribution Reservoirs and Standpipes	-	-	-	-	4,486
331	Transmission and Distribution Mains	-	-	-	-	7,819
333	Services	-	-	-	-	5,655
334	Meters and Meter Installations	-	-	-	-	5,967
335	Hydrants	-	-	-	-	341
336	Backflow Prevention Devices	-	-	-	-	-
339	Other Plant Miscellaneous Equipment	-	-	-	-	-
340	Office Furniture and Equipment	-	-	-	-	-
341	Transportation Equipment	-	-	-	-	-
342	Stores Equipment	-	-	-	-	-
343	Tools, Shop and Garage Equipment	-	-	-	-	236
344	Laboratory Equipment	-	-	-	-	145
345	Power Operated Equipment	-	-	-	-	-
346	Communication Equipment	-	-	-	-	277
347	Miscellaneous Equipment	-	-	-	-	-
348	Other Tangible Plant	-	-	-	-	14,175
TOTAL WATER ACCUMULATED DEPRECIATION		\$ -	\$ -	\$ -	\$ -	\$ 70,217

W-6(b)
GROUP

YEAR OF REPORT
31-Dec-00

**CONTRIBUTIONS IN AID OF CONSTRUCTION
ACCOUNT 271**

DESCRIPTION (a)	REFERENCE (b)	WATER (c)
Balance first of year		\$ 88,358
Add credits during year:		
Contributions received from Capacity, Main Extension and Customer Connection Charges	W-8(a)	\$ -
Contributions received from Developer or Contractor Agreements in cash or property	W-8(b)	
Total Credits		\$ -
Less debits charged during the year (All debits charged during the year must be explained below)		\$
Total Contributions In Aid of Construction		\$ 88,358

Explain all debits charged to Account 271 during the year below:

[illegible]

UTILITY NAME: LAKE PLACID UTILITIES, INC

YEAR OF REPORT

31-Dec-00

SYSTEM NAME / COUNTY : Highland County

WATER CIAC SCHEDULE "A"

ADDITIONS TO CONTRIBUTIONS IN AID OF CONSTRUCTION RECEIVED FROM CAPACITY,
MAIN EXTENSION AND CUSTOMER CONNECTION CHARGES RECEIVED DURING THE YEAR

DESCRIPTION OF CHARGE (a)	NUMBER OF CONNECTIONS (b)	CHARGE PER CONNECTION (c)	AMOUNT (d)
<u>WATER CONNECTIONS FEES (NONE)</u>	-	\$ -	\$ 0
			0
			0
			0
			0
			0
Total Credits			\$ 0

**ACCUMULATED AMORTIZATION OF WATER
CONTRIBUTIONS IN AID OF CONSTRUCTION**

DESCRIPTION (a)	WATER (b)
Balance first of year	\$ 22,686
Debits during the year:	
Accruals charged to Account 272	\$ 3,091
Other debits (specify) :	
Total debits	\$ 3,091
Credits during the year (specify) :	
	\$
Total credits	\$ -
Balance end of year	\$ 25,777

YEAR OF REPORT 31-Dec-00

WATER CIAC SCHEDULE "B"
ADDITIONS TO CONTRIBUTIONS IN AID OF CONSTRUCTION
RECEIVED FROM ALL DEVELOPERS OR CONTRACTORS AGREEMENTS
WHICH CASH OR PROPERTY WAS RECEIVED DURING THE YEAR

DESCRIPTION (a)	INDICATE CASH OR PROPERTY (b)	AMOUNT (c)
NONE		\$ -
Total Credits		\$ -

Reconciliation of Revenue to
Regulatory Assessment Fee Revenue
Water Operations

UTILITY NAME: **LAKE PLACID UTILITIES, INC**

YEAR OF REPORT 31-Dec-00

(A)	(B)	(C)	(D)
Accounts	Gross Wastewater Revenues per Sch W-9	Gross Wastewater Revenues per RAF Return	Difference (B)-(C)
Gross Revenues:			-
Unmetered Water Revenues			-
Total Metered Sales	42,236	42,236	-
Total Fire Protection Revenue			-
Other Sales to Public Authorities			-
Sales to Irrigation Customers			-
Sales for Resale			-
Interdepartmental Sales			-
Total Other Water Revenue			-
Total Water Operating Revenue	42,236	42,236	-
Less: Expense for Purchased Water from FPSC Regulated Utility			-
Net Water Operating Revenues	42,236	42,236	-

UTILITY NAME: LAKE PLACID UTILITIES, INC

YEAR OF REPORT 31-Dec-00

SYSTEM NAME / COUNTY : Highland County

WATER OPERATING REVENUE

ACCT. NO. (a)	DESCRIPTION (b)	BEGINNING YEAR NO. CUSTOMERS * (c)	YEAR END NUMBER OF CUSTOMERS (d)	AMOUNT (e)
460	Water Sales: Unmetered Water Revenue			\$
461.1	Metered Water Revenue: Sales to Residential Customers	194	194	41,916
461.2	Sales to Commercial Customers			
461.3	Sales to Industrial Customers			
461.4	Sales to Public Authorities			
461.5	Sales Multiple Family Dwellings			
Total Metered Sales		194	194	\$ 41,916
462.1	Fire Protection Revenue: Public Fire Protection			
462.2	Private Fire Protection			
Total Fire Protection Revenue				\$
464	Other Sales To Public Authorities			
465	Sales To Irrigation Customers			
466	Sales For Resale			
467	Interdepartmental Sales			
Total Water Sales		194	194	\$ 41,916
469	Other Water Revenues: Guaranteed Revenues (Including Allowance for Funds Prudently Invested or AFPI)			\$
470	Forfeited Discounts			
471	Miscellaneous Service Revenues			320
472	Rents From Water Property			
473	Interdepartmental Rents			
474	Other Water Revenues			
Total Other Water Revenues				\$ 320
Total Water Operating Revenues				\$ 42,236

* Customer is defined by Rule 25-30.210(1), Florida Administrative Code.

UTILITY NAME: LAKE PLACID UTILITIES, INC

YEAR OF REPORT

31-Dec-00

SYSTEM NAME / COUNTY : Highland County

WATER UTILITY EXPENSE ACCOUNTS

ACCT. NO. (a)	ACCOUNT NAME (b)	CURRENT YEAR (c)	.1 SOURCE OF SUPPLY AND EXPENSES - OPERATIONS (d)	.2 SOURCE OF SUPPLY AND EXPENSES - MAINTENANCE (e)
601	Salaries and Wages - Employees	\$ 4,492	\$ 988	\$ 270
603	Salaries and Wages - Officers, Directors and Majority Stockholders			
604	Employee Pensions and Benefits	803	177	48
610	Purchased Water			
615	Purchased Power	1,782		
616	Fuel for Power Purchased			
618	Chemicals	547	547	
620	Materials and Supplies	6,957	2,783	696
631	Contractual Services-Engineering			
632	Contractual Services - Accounting	120		
633	Contractual Services - Legal	-		
634	Contractual Services - Mgt. Fees			
635	Contractual Services - Testing			
636	Contractual Services - Other	234		
641	Rental of Building/Real Property			
642	Rental of Equipment			
650	Transportation Expenses	1,283	282	77
656	Insurance - Vehicle			
657	Insurance - General Liability			
658	Insurance - Workman's Comp.			
659	Insurance - Other	540	119	32
660	Advertising Expense			
666	Regulatory Commission Expenses - Amortization of Rate Case Expense	3,115		
667	Regulatory Commission Exp.-Other			
668	Water Resource Conservation Exp.			
670	Bad Debt Expense	112		
675	Miscellaneous Expenses	1,252		
Total Water Utility Expenses		\$ 21,237	\$ 4,896	\$ 1,123

UTILITY NAME:

LAKE PLACID UTILITIES, INC

YEAR OF REPORT

31-Dec-00

SYSTEM NAME / COUNTY :

Highland County

WATER EXPENSE ACCOUNT MATRIX

.3 WATER TREATMENT EXPENSES - OPERATIONS (f)	.4 WATER TREATMENT EXPENSES - MAINTENANCE (g)	.5 TRANSMISSION & DISTRIBUTION EXPENSES - OPERATIONS (h)	.6 TRANSMISSION & DISTRIBUTION EXPENSES - MAINTENANCE (i)	.7 CUSTOMER ACCOUNTS EXPENSE (j)	.8 ADMIN. & GENERAL EXPENSES (k)
\$ 988	\$ 270	\$ 1,572	\$ 404	\$	\$
177	48	281	72		
1,782					
		2,922	556		120
		0			0
				117	117
282	77	449	116		
119	32	189	49		
					3,115
				112	
				626	626
\$ 3,348	\$ 427	\$ 5,413	\$ 1,197	\$ 855	\$ 3,978

UTILITY NAME: LAKE PLACID UTILITIES, INC.

YEAR OF REPORT 31-Dec-00

SYSTEM NAME / COUNTY : SUN 'N LAKES OF LAKE PLACID / HIGHLANDS

PUMPING AND PURCHASED WATER STATISTICS

MONTH (a)	WATER PURCHASED FOR RESALE (Omit 000's) (b)	FINISHED WATER PUMPED FROM WELLS (Omit 000's) (c)	WATER USED FOR LINE FLUSHING, FIGHTING FIRES, ETC. (d)	TOTAL WATER PUMPED AND PURCHASED (Omit 000's) [(b)+(c)-(d)] (e)	WATER SOLD TO CUSTOMERS (Omit 000's) (f)
January		1.003	0.100		0.619
February		1.107	0.000		0.820
March		1.110	0.000		0.911
April		0.541	0.000		0.505
May		0.516	0.000		0.432
June		0.509	0.000		0.321
July		0.613	0.000		0.344
August		0.637	0.000		0.425
September		0.610	0.000		0.407
October		0.572	0.000		0.374
November		0.851	0.000		0.623
December		0.862	0.000		0.523
Total for Year		8.931	0.100	8.831	6.304

If water is purchased for resale, indicate the following:

Vendor None

Point of delivery _____

If water is sold to other water utilities for redistribution, list names of such utilities below:

N/A

List for each source of supply:	CAPACITY OF WELL	GALLONS PER DAY FROM SOURCE	TYPE OF SOURCE
Well #1	200 gpm	288,000	Groundwater
Well #2	200 gpm	288,000	Groundwater

UTILITY NAME: LAKE PLACID UTILITIES, INC.

YEAR OF REPORT 31-Dec-00

SYSTEM NAME / COUNTY : SUN 'N LAKES OF LAKE PLACID / HIGHLANDS

WATER TREATMENT PLANT INFORMATION
Provide a separate sheet for each water treatment facility

Permitted Capacity of Plant (GPD):	<u>.288 mgd</u>		
Location of measurement of capacity (i.e. Wellhead, Storage Tank):	<u>Wellhead</u>		
Type of treatment (reverse osmosis, (sedimentation, chemical, aerated, etc.):	<u>Chlorination</u>		
LIME TREATMENT			
Unit rating (i.e., GPM, pounds per gallon): <u>N/A</u>	Manufacturer:	<u>N/A</u>	
FILTRATION			
Type and size of area:			
Pressure (in square feet): <u>N/A</u>	Manufacturer:	<u>N/A</u>	
Gravity (in GPM/square feet): <u>N/A</u>	Manufacturer:	<u>N/A</u>	

UTILITY NAME:

LAKE PLACID UTILITIES, INC.

YEAR OF REPORT 31-Dec-00

SYSTEM NAME / COUNTY :

SUN 'N LAKES OF LAKE PLACID / HIGHLANDS

CALCULATION OF THE WATER SYSTEM METER EQUIVALENTS

METER SIZE (a)	TYPE OF METER (b)	EQUIVALENT FACTOR (c)	NUMBER OF METERS (d)	TOTAL NUMBER OF METER EQUIVALENTS (c x d) (e)
All Residential		1.0		
5/8"	Displacement	1.0	115	115
3/4"	Displacement	1.5		
1"	Displacement	2.5	4	10.0
1 1/2"	Displacement or Turbine	5.0		
2"	Displacement, Compound or Turbine	8.0		
3"	Displacement	15.0		
3"	Compound	16.0		
3"	Turbine	17.5	1	17.5
4"	Displacement or Compound	25.0		
4"	Turbine	30.0	3	90
6"	Displacement or Compound	50.0		
6"	Turbine	62.5		
8"	Compound	80.0		
8"	Turbine	90.0		
10"	Compound	115.0		
10"	Turbine	145.0		
12"	Turbine	215.0		
Total Water System Meter Equivalents				232.5

CALCULATION OF THE WATER SYSTEM EQUIVALENT RESIDENTIAL CONNECTIONS

Provide a calculation used to determine the value of one water equivalent residential connection (ERC).

Use one of the following methods:

- (a) If actual flow data are available from the preceding 12 months, divide the total annual single family residence (SFR) gallons sold by the average number of single family residence customers for the same period and divide the result by 365 days.
- (b) If no historical flow data are available, use:

$$ERC = (\text{Total SFR gallons sold (Omit 000)} / 365 \text{ days} / 350 \text{ gallons per day})$$

ERC Calculation:

$$6.304 / 365 \text{ days} / 350 \text{ gpd} = 49$$

UTILITY NAME: LAKE PLACID UTILITIES, INC.

YEAR OF REPORT
31-Dec-00

SYSTEM NAME / COUNTY : SUN 'N LAKES OF LAKE PLACID / HIGHLANDS

OTHER WATER SYSTEM INFORMATION

Furnish information below for each system. A separate page should be supplied where necessary.

1. Present ERC's * the system can efficiently serve. 823
2. Maximum number of ERCs * which can be served. 823
3. Present system connection capacity (in ERCs *) using existing lines. 823
4. Future connection capacity (in ERCs *) upon service area buildout. 823
5. Estimated annual increase in ERCs *. 22
6. Is the utility required to have fire flow capacity? No
If so, how much capacity is required? _____
7. Attach a description of the fire fighting facilities. Hydrants
8. Describe any plans and estimated completion dates for any enlargements or improvements of this system.
The vertical turbine pumps at Wells 1 & 2 were overhauled.

9. When did the company last file a capacity analysis report with the DEP? None filed
10. If the present system does not meet the requirements of DEP rules:
 - a. Attach a description of the plant upgrade necessary to meet the DEP rules.
 - b. Have these plans been approved by DEP? N/A
 - c. When will construction begin? N/A
 - d. Attach plans for funding the required upgrading.
 - e. Is this system under any Consent Order with DEP? N/A
11. Department of Environmental Protection ID # 6280273
12. Water Management District Consumptive Use Permit # N/A
 - a. Is the system in compliance with the requirements of the CUP? N/A
 - b. If not, what are the utility's plans to gain compliance? N/A

* An ERC is determined based on the calculation on the bottom of Page W-13.

**WASTEWATER
OPERATION
SECTION**

LAKE PLACID UTILITIES, INC

YEAR OF REPORT
31-Dec-00

WASTEWATER LISTING OF SYSTEM GROUPS

List below the name of each reporting system and its certificate number. Those systems which have been consolidated under the same tariff should be assigned a group number. Each individual system which has not been consolidated should be assigned its own group number.

The wastewater financial schedules (S-2 through S-10) should be filed for the group in total.

The wastewater engineering schedules (S-11 and S-12) must be filed for each system in the group.

All of the following wastewater pages (S-2 through S-12) should be completed for each group and arranged by group number.

[illegible]

UTILITY NAME: LAKE PLACID UTILITIES, INC

YEAR OF REPORT 31-Dec-00

SYSTEM NAME / COUNTY : Highland County

SCHEDULE OF YEAR END WASTEWATER RATE BASE

ACCT. NO. (a)	ACCOUNT NAME (b)	REFERENCE PAGE (c)	WASTEWATER UTILITY (d)
101	Utility Plant In Service	S-4A	\$ 422,275
	Less:		
	Nonused and Useful Plant (1)		
108	Accumulated Depreciation	S-6B	244,744
110	Accumulated Amortization	F-8	3,184
271	Contributions In Aid of Construction	S-7	151,637
252	Advances for Construction	F-20	-
Subtotal			\$ 22,710
272	Add:		
	Accumulated Amortization of Contributions in Aid of Construction	S-8A	\$ 81,777
Subtotal			\$ 104,487
114	Plus or Minus:		
	Acquisition Adjustments (2)	F-7	-
115	Accumulated Amortization of Acquisition Adjustments (2)	F-7	-
	Working Capital Allowance (3)		6,290
	Other (Specify):		
WASTEWATER RATE BASE			\$ 110,777
WASTEWATER OPERATING INCOME		S-3	\$ 5,244
ACHIEVED RATE OF RETURN (Wastewater Operating Income / Wastewater Rate Base)			4.73%

NOTES : (1) Estimate based on the methodology used in the last rate proceeding.

(2) Include only those Acquisition Adjustments that have been approved by the Commission.

(3) Calculation consistent with last rate proceeding.

In absence of a rate proceeding, Class A utilities will use the Balance Sheet Method and Class B Utilities will use the One-eighth Operating and Maintenance Expense Method.

UTILITY NAME: LAKE PLACID UTILITIES, INC

YEAR OF REPORT
31-Dec-00

SYSTEM NAME / COUNTY : Highland County

WASTEWATER OPERATING STATEMENT

ACCT. NO. (a)	ACCOUNT NAME (b)	REFERENCE PAGE (c)	WASTEWATER UTILITY (d)
	UTILITY OPERATING INCOME		
400	Operating Revenues	S-9A	\$ 65,835
530	Less: Guaranteed Revenue (and AFPI)	S-9A	
	Net Operating Revenues		\$ 65,835
401	Operating Expenses	S-10A	\$ 50,319
403	Depreciation Expense	S-6A	11,741
	Less: Amortization of CIAC	S-8A	(4,859)
	Net Depreciation Expense		\$ 6,882
406	Amortization of Utility Plant Acquisition Adjustment	F-7	(455)
407	Amortization Expense (Other than CIAC)	F-8	307
408.10	Taxes Other Than Income Utility Regulatory Assessment Fee		3,144
408.11	Property Taxes		1,395
408.12	Payroll Taxes		539
408.13	Other Taxes and Licenses		-
408	Total Taxes Other Than Income		\$ 5,078
409.1	Income Taxes		(4,548)
410.10	Deferred Federal Income Taxes		2,614
410.11	Deferred State Income Taxes		394
411.10	Provision for Deferred Income Taxes - Credit		
412.10	Investment Tax Credits Deferred to Future Periods		
412.11	Investment Tax Credits Restored to Operating Income		
	Utility Operating Expenses		\$ 60,591
	Utility Operating Income		\$ 5,244
530	Add Back: Guaranteed Revenue (and AFPI)	S-9A	\$
413	Income From Utility Plant Leased to Others		
414	Gains (losses) From Disposition of Utility Property		
420	Allowance for Funds Used During Construction		411
	Total Utility Operating Income		\$ 5,655

UTILITY NAME: LAKE PLACID UTILITIES, INC

SYSTEM NAME / COUNTY Highland County

WASTEWATER UTILITY PLANT ACCOUNTS

ACCT. NO. (a)	ACCOUNT NAME (b)	PREVIOUS YEAR (c)	ADDITIONS (d)	RETIREMENTS (e)	CURRENT YEAR (f)
351	Organization	\$ 10,994	\$ -	\$ -	\$ 10,994
352	Franchises	1,250	-	-	1,250
353	Land and Land Rights	21,665	-	-	21,665
354	Structures and Improvements	56,516	-	-	56,516
355	Power Generation Equipment	-	-	-	-
360	Collection Sewers - Force	41,790	-	-	41,790
361	Collection Sewers - Gravity	50,498	25	-	50,523
362	Special Collecting Structures	-	-	-	-
363	Services to Customers	17,731	-	-	17,731
364	Flow Measuring Devices	-	-	-	-
365	Flow Measuring Installations	-	-	-	-
366	Reuse Services	-	-	-	-
367	Reuse Meters and Meter Installations	-	-	-	-
370	Receiving Wells	-	-	-	-
371	Pumping Equipment	117,969	19,381	-	137,350
374	Reuse Distribution Reservoirs	-	-	-	-
375	Reuse Transmission and Distribution System	-	-	-	-
380	Treatment and Disposal Equipment	-	-	-	-
381	Plant Sewers	77,272	5,244	-	82,516
382	Outfall Sewer Lines	1,940	-	-	1,940
389	Other Plant Miscellaneous Equipment	-	-	-	-
390	Office Furniture and Equipment	-	-	-	-
391	Transportation Equipment	-	-	-	-
392	Stores Equipment	-	-	-	-
393	Tools, Shop and Garage Equipment	-	-	-	-
394	Laboratory Equipment	-	-	-	-
395	Power Operated Equipment	-	-	-	-
396	Communication Equipment	-	-	-	-
397	Miscellaneous Equipment	-	-	-	-
398	Other Tangible Plant	-	-	-	-
Total Wastewater Plant		\$ 397,625	\$ 24,650	\$ -	\$ 422,275

NOTE: Any adjustments made to reclassify property from one account to another must be footnoted.

UTILITY NAME: LAKE PLACID UTILITIES, INC

SYSTEM NAME / COUNTY : Highland County

WASTEWATER UTILITY PLANT MATRIX

ACCT. NO.	ACCOUNT NAME	.1 INTANGIBLE PLANT (g)	.2 COLLECTION PLANT (h)	.3 SYSTEM PUMPING PLANT (i)	.4 TREATMENT AND DISPOSAL (j)	.5 RECLAIMED WASTEWATER TREATMENT PLANT (i)	.6 RECLAIMED WASTEWATER DISTRIBUTION PLANT (j)	.7 GENERAL PLANT (k)
(a)	(b)	(g)	(h)	(i)	(j)	(i)	(j)	(k)
351	Organization	\$ 10,994						
352	Franchises	1,250						
353	Land and Land Rights		21,665					
354	Structures and Improvements		56,516					
355	Power Generation Equipment							
360	Collection Sewers - Force		41,790					
361	Collection Sewers - Gravity		50,523					
362	Special Collecting Structures							
363	Services to Customers		17,731					
364	Flow Measuring Devices							
365	Flow Measuring Installations							
366	Reuse Services							
367	Reuse Meters and Meter Installations							
370	Receiving Wells							
371	Pumping Equipment			137,350				
374	Reuse Distribution Reservoirs							
375	Reuse Transmission and Distribution System							
380	Treatment and Disposal Equipment							
381	Plant Sewers				82,516			
382	Outfall Sewer Lines				1,940			
389	Other Plant Miscellaneous Equipment							
390	Office Furniture and Equipment							
391	Transportation Equipment							
392	Stores Equipment							
393	Tools, Shop and Garage Equipment							
394	Laboratory Equipment							
395	Power Operated Equipment							
396	Communication Equipment							
397	Miscellaneous Equipment							
398	Other Tangible Plant							
	Total Wastewater Plant	\$ 12,244	\$ 188,225	\$ 137,350	\$ 84,456	\$ -	\$ -	\$ -

NOTE: Any adjustments made to reclassify property from one account to another must be footnoted.

S-4(b)
GROUP

UTILITY NAME:

LAKE PLACID UTILITIES, INC

YEAR OF REPORT

31-Dec-00

SYSTEM NAME / COUNTY : Highland County

BASIS FOR WASTEWATER DEPRECIATION CHARGES

ACCT. NO. (a)	ACCOUNT NAME (b)	AVERAGE SERVICE LIFE IN YEARS (c)	AVERAGE NET SALVAGE IN PERCENT (d)	DEPRECIATION RATE APPLIED IN PERCENT (100% - D) / C (e)
354	Structures and Improvements			3.13%
355	Power Generation Equipment			
360	Collection Sewers - Force			3.33%
361	Collection Sewers - Gravity			2.22%
362	Special Collecting Structures			
363	Services to Customers			2.63%
364	Flow Measuring Devices			
365	Flow Measuring Installations			
366	Reuse Services			
367	Reuse Meters and Meter Installations			
370	Receiving Wells			2.86%
371	Pumping Equipment			4.00%
375	Reuse Transmission and Distribution System			
380	Treatment and Disposal Equipment			
381	Plant Sewers			2.86%
382	Outfall Sewer Lines			3.33%
389	Other Plant Miscellaneous Equipment			
390	Office Furniture and Equipment			
391	Transportation Equipment			
392	Stores Equipment			
393	Tools, Shop and Garage Equipment			6.25%
394	Laboratory Equipment			
395	Power Operated Equipment			
396	Communication Equipment			
397	Miscellaneous Equipment			
398	Other Tangible Plant			
Wastewater Plant Composite Depreciation Rate *				

* If depreciation rates prescribed by this Commission are on a total composite basis, entries should be made on this line only.

UTILITY NAME: LAKE PLACID UTILITIES, INC

SYSTEM NAME / COUNTY : Highland County

ANALYSIS OF ENTRIES IN WASTEWATER ACCUMULATED DEPRECIATION

ACCT. NO. (a)	ACCOUNT NAME (b)	BALANCE AT BEGINNING OF YEAR (c)	ACCRUALS (d)	OTHER CREDITS * (e)	TOTAL CREDITS (d + e) (f)
354	Structures and Improvements	\$ 34,390	\$ 1,769	\$ -	\$ 1,769
355	Power Generation Equipment				
360	Collection Sewers - Force	37,876	1,392	-	1,392
361	Collection Sewers - Gravity	21,853	1,121	-	1,121
362	Special Collecting Structures				
363	Services to Customers	7,721	467	-	467
364	Flow Measuring Devices				
365	Flow Measuring Installations				
366	Reuse Services				
367	Reuse Meters and Meter Installations				
370	Receiving Wells	-	-	-	-
371	Pumping Equipment	86,724	4,719	-	4,719
375	Reuse Transmission and Distribution System				
380	Treatment and Disposal Equipment				
381	Plant Sewers	42,770	2,209	-	2,209
382	Outfall Sewer Lines	1,616	64	-	64
389	Other Plant Miscellaneous Equipment				
390	Office Furniture and Equipment	-	-	-	-
391	Transportation Equipment				
392	Stores Equipment				
393	Tools, Shop and Garage Equipment	53			
394	Laboratory Equipment	-	-	-	-
395	Power Operated Equipment				
396	Communication Equipment	-	-	-	-
397	Miscellaneous Equipment				
398	Other Tangible Plant				
Total Depreciable Wastewater Plant in Service		\$ 233,003	\$ 11,741	\$ -	\$ 11,741

* Specify nature of transaction.
Use () to denote reversal entries.

OTHER CREDITS column (E) * are due to allocation of UIF plant

S-6(a)
GROUP

UTILITY NAME: LAKE PLACID UTILITIES, INC

SYSTEM NAME / COUNTY : Highland County

ANALYSIS OF ENTRIES IN WASTEWATER ACCUMULATED DEPRECIATION

ACCT. NO.	ACCOUNT NAME (b)	PLANT RETIRED (g)	SALVAGE AND INSURANCE (h)	COST OF REMOVAL AND OTHER CHARGES (i)	TOTAL CHARGES (g-h+i) (j)	BALANCE AT END OF YEAR (c+f-j) (k)
(a)						
354	Structures and Improvements	\$ -	\$ -	\$ -	\$ -	\$ 36,159
355	Power Generation Equipment	-	-	-	-	-
360	Collection Sewers - Force	-	-	-	-	39,268
361	Collection Sewers - Gravity	-	-	-	-	22,974
362	Special Collecting Structures	-	-	-	-	-
363	Services to Customers	-	-	-	-	8,188
364	Flow Measuring Devices	-	-	-	-	-
365	Flow Measuring Installations	-	-	-	-	-
366	Reuse Services	-	-	-	-	-
367	Reuse Meters and Meter Installations	-	-	-	-	-
370	Receiving Wells	-	-	-	-	-
371	Pumping Equipment	-	-	-	-	91,443
375	Reuse Transmission and Distribution System	-	-	-	-	-
380	Treatment and Disposal Equipment	-	-	-	-	-
381	Plant Sewers	-	-	-	-	44,979
382	Outfall Sewer Lines	-	-	-	-	1,680
389	Other Plant Miscellaneous Equipment	-	-	-	-	-
390	Office Furniture and Equipment	-	-	-	-	-
391	Transportation Equipment	-	-	-	-	-
392	Stores Equipment	-	-	-	-	-
393	Tools, Shop and Garage Equipment	-	-	-	-	53
394	Laboratory Equipment	-	-	-	-	-
395	Power Operated Equipment	-	-	-	-	-
396	Communication Equipment	-	-	-	-	-
397	Miscellaneous Equipment	-	-	-	-	-
398	Other Tangible Plant	-	-	-	-	-
Total Depreciable Wastewater Plant in Service		\$ -	\$ -	\$ -	\$ -	\$ 244,744

* Specify nature of transaction.
Use () to denote reversal entries.

S-6(b)
GROUP

YEAR OF REPORT
31-Dec-00

**CONTRIBUTIONS IN AID OF CONSTRUCTION
ACCOUNT 271**

DESCRIPTION (a)	REFERENCE (b)	WASTEWATER (c)
Balance first of year		\$ <u>151,637</u>
Add credits during year:		
Contributions received from Capacity, Main Extension and Customer Connection Charges	S-8A	\$ <u>-</u>
Contributions received from Developer or Contractor Agreements in cash or property	S-8B	<u>-</u>
Total Credits		\$ <u>-</u>
Less debits charged during the year (All debits charged during the year must be explained below)		\$ <u>-</u>
Total Contributions In Aid of Construction		\$ <u>151,637</u>

[illegible]

UTILITY NAME: LAKE PLACID UTILITIES, INC

YEAR OF REPORT 31-Dec-00

SYSTEM NAME / COUNTY : Highland County

WASTEWATER CIAC SCHEDULE "A"

ADDITIONS TO CONTRIBUTIONS IN AID OF CONSTRUCTION RECEIVED FROM CAPACITY,
MAIN EXTENSION AND CUSTOMER CONNECTION CHARGES RECEIVED DURING THE YEAR

DESCRIPTION OF CHARGE (a)	NUMBER OF CONNECTIONS (b)	CHARGE PER CONNECTION (c)	AMOUNT (d)
<u>SEWER CONNECTIONS FEES (NONE)</u>	-	\$ -	\$ -
			-
			-
			-
Total Credits			\$ -

**ACCUMULATED AMORTIZATION OF WASTEWATER
CONTRIBUTIONS IN AID OF CONSTRUCTION**

DESCRIPTION (a)	WASTEWATER (b)
Balance first of year	\$ 76,918
Debits during the year:	
Accruals charged to Account 272	\$ 4,859
Other debits (specify) :	
_____	_____
_____	_____
Total debits	\$ 4,859
Credits during the year (specify) :	
_____	\$ _____
_____	_____
Total credits	\$ -
Balance end of year	\$ 81,777

YEAR OF REPORT
31-Dec-00

Reconciliation of Revenue to
Regulatory Assessment Fee Revenue
Wastewater Operations

UTILITY NAME: **LAKE PLACID UTILITIES, INC**

YEAR OF REPORT 31-Dec-00

(A)	(B)	(C)	(D)
Accounts	Gross Wastewater Revenues per Sch S-9	Gross Wastewater Revenues per RAF Return	Difference (B)-(C)
Gross Revenues:			-
Total Flat-Rate Revenues			-
Total Measured Revenues	65,835	65,835	-
Revenues from Public Authorities			-
Revenues from Other Systems			-
Interdepartmental Revenues			-
Total Other Wastewater Revenues			-
Reclaimed Water Sales			-
Total Wastewater Operating Revenue	65,835	65,835	-
Less: Expense for Purchased Wastewater from FPSC Regulated Utility			-
Net Wastewater Operating Revenues	65,835	65,835	-

UTILITY NAME: LAKE PLACID UTILITIES, INC

YEAR OF REPORT 31-Dec-00

SYSTEM NAME / COUNTY : Highland County

WASTEWATER OPERATING REVENUE

ACCT. NO. (a)	DESCRIPTION (b)	BEGINNING YEAR NO. CUSTOMERS * (c)	YEAR END NUMBER OF CUSTOMERS * (d)	AMOUNTS (e)
WASTEWATER SALES				
521.1	Flat Rate Revenues: Residential Revenues	263	263	\$ 65,340
521.2	Commercial Revenues			
521.3	Industrial Revenues			
521.4	Revenues From Public Authorities			
521.5	Multiple Family Dwelling Revenues			
521.6	Other Revenues			
521	Total Flat Rate Revenues	263	263	\$ 65,340
522.1	Measured Revenues: Residential Revenues			
522.2	Commercial Revenues			
522.3	Industrial Revenues			
522.4	Revenues From Public Authorities			
522.5	Multiple Family Dwelling Revenues			
522	Total Measured Revenues			\$
523	Revenues From Public Authorities			
524	Revenues From Other Systems			
525	Interdepartmental Revenues			
Total Wastewater Sales		263	263	\$ 65,340
OTHER WASTEWATER REVENUES				
530	Guaranteed Revenues			\$
531	Sale of Sludge			
532	Forfeited Discounts			
534	Rents From Wastewater Property			
535	Interdepartmental Rents			
536	Other Wastewater Revenues (Including Allowance for Funds Prudently Invested or AFPI)			495
Total Other Wastewater Revenues				\$ 495

* Customer is defined by Rule 25-30.210(1), Florida Administrative Code.

UTILITY NAME: LAKE PLACID UTILITIES, INC

YEAR OF REPORT 31-Dec-00

SYSTEM NAME / COUNTY : Highland County

WASTEWATER OPERATING REVENUE

ACCT. NO. (a)	DESCRIPTION (b)	BEGINNING YEAR NO. CUSTOMERS * (c)	YEAR END NUMBER OF CUSTOMERS * (d)	AMOUNTS (e)
RECLAIMED WATER SALES				
540.1	Flat Rate Reuse Revenues: Residential Reuse Revenues			\$
540.2	Commercial Reuse Revenues			
540.3	Industrial Reuse Revenues			
540.4	Reuse Revenues From Public Authorities			
540.5	Other Revenues			
540	Total Flat Rate Reuse Revenues			\$
541.1	Measured Reuse Revenues: Residential Reuse Revenues			
541.2	Commercial Reuse Revenues			
541.3	Industrial Reuse Revenues			
541.4	Reuse Revenues From Public Authorities			
541	Total Measured Reuse Revenues			\$
544	Reuse Revenues From Other Systems			
Total Reclaimed Water Sales				\$
Total Wastewater Operating Revenues				\$ <u>65,835</u>

* Customer is defined by Rule 25-30.210(1), Florida Administrative Code.

UTILITY NAME: LAKE PLACID UTILITIES, INC

SYSTEM NAME / COUNTY Highland County

WASTEWATER UTILITY EXPENSE ACCOUNT MATRIX

ACCT. NO.	ACCOUNT NAME	CURRENT YEAR	.1 COLLECTION EXPENSES- OPERATIONS (d)	.2 COLLECTION EXPENSES- MAINTENANCE (e)	.3 PUMPING EXPENSES - OPERATIONS (f)	.4 PUMPING EXPENSES - MAINTENANCE (g)	.5 TREATMENT & DISPOSAL EXPENSES - OPERATIONS (h)	.6 TREATMENT & DISPOSAL EXPENSES - MAINTENANCE (i)
(a)	(b)	(c)						
701	Salaries and Wages - Employees	\$ 5,333	\$ 160	\$ 640	\$ 1,067	\$ 267	\$ 2,560	\$ 639
703	Salaries and Wages - Officers, Directors and Majority Stockholders							
704	Employee Pensions and Benefits	1,251	38	88	150	63	375	148
710	Purchased Sewage Treatment							
711	Sludge Removal Expense	3,935					3,935	
715	Purchased Power	2,602			651		1,951	
716	Fuel for Power Purchased							
718	Chemicals	851					851	
720	Materials and Supplies	26,603	1,064	4,256	6,385	1,596	10,641	2,661
731	Contractual Services-Engineering	-						
732	Contractual Services - Accounting	187						
733	Contractual Services - Legal	-						
734	Contractual Services - Mgt. Fees	-						
735	Contractual Services - Testing							
736	Contractual Services - Other	364						
741	Rental of Building/Real Property							
742	Rental of Equipment							
750	Transportation Expenses	2,000	60	240	400	100	960	240
756	Insurance - Vehicle							
757	Insurance - General Liability							
758	Insurance - Workman's Comp.							
759	Insurance - Other	843						
760	Advertising Expense							
766	Regulatory Commission Expenses - Amortization of Rate Case Expense	4,224						
767	Regulatory Commission Exp.-Other							
770	Bad Debt Expense	175						
775	Miscellaneous Expenses	1,951						
Total Wastewater Utility Expenses		\$ 50,319	\$ 1,322	\$ 5,224	\$ 8,653	\$ 2,026	\$ 21,273	\$ 3,688

UTILITY NAME: LAKE PLACID UTILITIES, INC

SYSTEM NAME / COUNTY : Highland County

WASTEWATER UTILITY EXPENSE ACCOUNT MATRIX

ACCT. NO.	ACCOUNT NAME (b)	.7 CUSTOMER ACCOUNTS EXPENSE (j)	.8 ADMIN. & GENERAL EXPENSES (k)	.9 RECLAIMED WATER TREATMENT EXPENSES- OPERATIONS (l)	.10 RECLAIMED WATER TREATMENT EXPENSES- MAINTENANCE (m)	.11 RECLAIMED WATER DISTRIBUTION EXPENSES- OPERATIONS (n)	.12 RECLAIMED WATER DISTRIBUTION EXPENSES- MAINTENANCE (o)
701	Salaries and Wages - Employees	\$	\$	\$	\$	\$	\$
703	Salaries and Wages - Officers, Directors and Majority Stockholders						
704	Employee Pensions and Benefits	389					
710	Purchased Sewage Treatment						
711	Sludge Removal Expense						
715	Purchased Power						
716	Fuel for Power Purchased						
718	Chemicals						
720	Materials and Supplies						
731	Contractual Services-Engineering		0				
732	Contractual Services - Accounting		187				
733	Contractual Services - Legal		0				
734	Contractual Services - Mgt. Fees		0				
735	Contractual Services - Testing		0				
736	Contractual Services - Other	182					
741	Rental of Building/Real Property						
742	Rental of Equipment						
750	Transportation Expenses						
756	Insurance - Vehicle						
757	Insurance - General Liability						
758	Insurance - Workman's Comp.						
759	Insurance - Other		843				
760	Advertising Expense						
766	Regulatory Commission Expenses - Amortization of Rate Case Expense		4,224				
767	Regulatory Commission Exp.-Other						
770	Bad Debt Expense	175					
775	Miscellaneous Expenses	976	975				
Total Wastewater Utility Expenses		\$ 1,722	\$ 6,411	\$ -	\$ -	\$ -	\$ -

S-10(b)
GROUP

UTILITY NAME:

LAKE PLACID UTILITIES, INC.

YEAR OF REPORT 31-Dec-00

SYSTEM NAME / COUNTY :

SUN 'N LAKES OF LAKE PLACID/HIGHLANDS

CALCULATION OF THE WASTEWATER SYSTEM METER EQUIVALENTS

WATER METER SIZE (a)	TYPE OF WATER METER (b)	EQUIVALENT FACTOR (c)	NUMBER OF WATER METERS (d)	TOTAL NUMBER OF METER EQUIVALENTS (c x d) (e)
All Residential		1.0		
5/8"	Displacement	1.0	185*	185
3/4"	Displacement	1.5		
1"	Displacement	2.5	3	7.5
1 1/2"	Displacement or Turbine	5.0		
2"	Displacement, Compound or Turbine	8.0		
3"	Displacement	15.0		
3"	Compound	16.0		
3"	Turbine	17.5		
4"	Displacement or Compound	25.0	3	75
4"	Turbine	30.0		
6"	Displacement or Compound	50.0		
6"	Turbine	62.5		
8"	Compound	80.0		
8"	Turbine	90.0		
10"	Compound	115.0		
10"	Turbine	145.0		
12"	Turbine	215.0		
Total Wastewater System Meter Equivalents				267.5
*75 are flat fee - not metered				

**CALCULATION OF THE WASTEWATER SYSTEM
EQUIVALENT RESIDENTIAL CONNECTIONS**

Provide a calculation used to determine the value of one wastewater equivalent residential connection (ERC).

Use one of the following methods:

(a) If actual flow data are available from the preceding 12 months, divide the total annual single family residence (SFR) gallons sold by the average number of single family residence customers for the same period and divide the result by 365 days.

(b) If no historical flow data are available, use:

$$ERC = (\text{Total SFR gallons treated (Omit 000)} / 365 \text{ days} / 280 \text{ gallons per day})$$

For wastewater only utilities:

Subtract all general use and other non residential customer gallons from the total gallons treated.

Divide the remainder (SFR customers) by 365 days to reveal single family residence customer gallons per day.

NOTE:

Total gallons treated includes both treated and purchased treatment.

ERC Calculation:

$$4.785 / 365 \text{ days} / 280 \text{ gpd} = 47$$

UTILITY NAME: LAKE PLACID UTILITIES, INC.

YEAR OF REPORT 31-Dec-00

SYSTEM NAME / COUNTY : SUN 'N LAKES OF LAKE PLACID/HIGHLANDS

WASTEWATER TREATMENT PLANT INFORMATION

Provide a separate sheet for each wastewater treatment facility

Permitted Capacity	<u>.090 mgd</u>	<u> </u>	<u> </u>
Basis of Permit Capacity (1)	<u>AADF</u>	<u> </u>	<u> </u>
Manufacturer	<u>Marolf</u>	<u> </u>	<u> </u>
Type (2)	<u>Ext. Aeration</u>	<u> </u>	<u> </u>
Hydraulic Capacity	<u>.100 mgd</u>	<u> </u>	<u> </u>
Average Daily Flow	<u>.013 mgd</u>	<u> </u>	<u> </u>
Total Gallons of Wastewater Treated	<u>4,785 mg</u>	<u> </u>	<u> </u>
Method of Effluent Disposal	<u>Perc Ponds</u>	<u> </u>	<u> </u>

- (1) Basis of permitted capacity as stated on the Florida DEP WWTP Operating Permit
(i.e. average annual daily flow, etc.)
- (2) Contact stabilization, advanced treatment, etc.

UTILITY NAME: LAKE PLACID UTILITIES, INC.

YEAR OF REPORT
31-Dec-00

SYSTEM NAME / COUNTY : SUN 'N LAKES OF LAKE PLACID/HIGHLANDS

OTHER WASTEWATER SYSTEM INFORMATION

Furnish information below for each system. A separate page should be supplied where necessary.

1. Present number of ERCs* now being served 75
2. Maximum number of ERCs* which can be served 321
3. Present system connection capacity (in ERCs*) using existing lines 321
4. Future connection capacity (in ERCs*) upon service area buildout 321
5. Estimated annual increase in ERCs* 22
6. Describe any plans and estimated completion dates for any enlargements or improvements of this system
The lift station located on Golfview needed major repair. Repairs have been completed as of February, 2001. The control panels @ the Hotel and Fairway lift stations were replaced.
7. If the utility uses reuse as a means of effluent disposal, attach a list of the reuse end users and the amount of reuse provided to each, if known. None
8. If the utility does not engage in reuse, has a reuse feasibility study been completed? No
If so, when? N/A
9. Has the utility been required by the DEP or water management district to implement reuse? No
If so, what are the utility's plans to comply with this requirement? N/A
10. When did the company last file a capacity analysis report with the DEP? 2000
11. If the present system does not meet the requirements of DEP rules:
 - a. Attach a description of the plant upgrade necessary to meet the DEP rules.
 - b. Have these plans been approved by DEP? N/A
 - c. When will construction begin? N/A
 - d. Attach plans for funding the required upgrading.
 - e. Is this system under any Consent Order with DEP? No
12. Department of Environmental Protection ID # FLA014386

* An ERC is determined based on the calculation on S-11.