

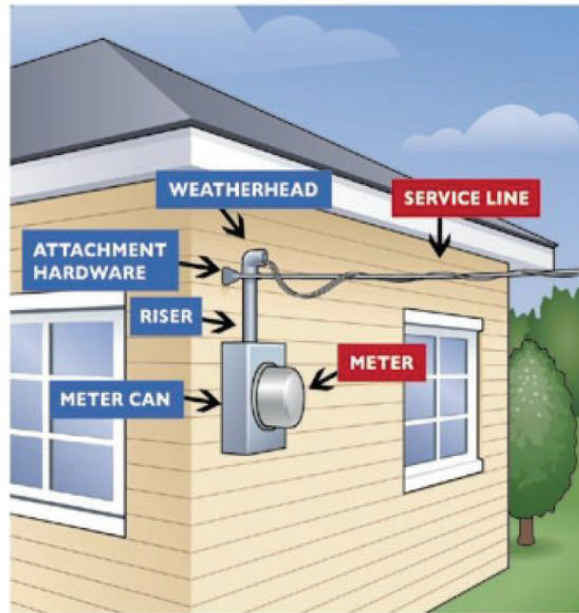
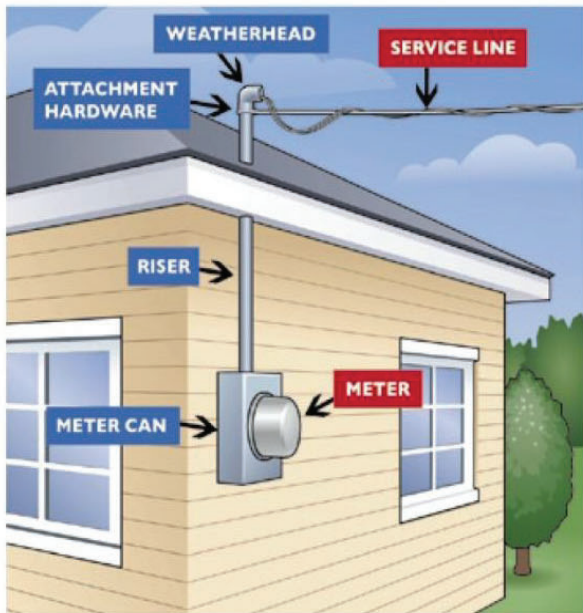
# Storm Tips: Before and After



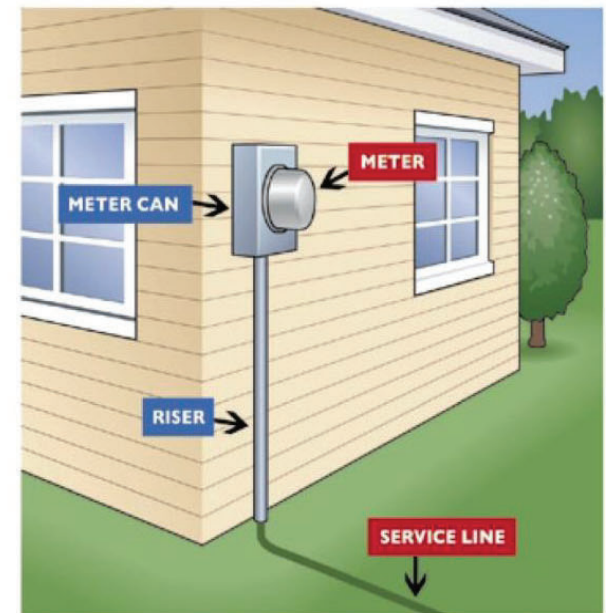
## Who is Responsible for Fixing What?

If your electrical components are damaged, you may be responsible for repairs. Identify your type of service connection below to learn what your responsibilities are.

OVERHEAD DISTRIBUTION



UNDERGROUND DISTRIBUTION



Courtesy: Kissimmee Utility Authority

 **CUSTOMER RESPONSIBILITY**      **UTILITY RESPONSIBILITY**