

# Florida Public Service Commission Hurricane Preparedness Workshop

Tony Guillen – General Manager Electric & Gas  
May 13, 2025



**City of Tallahassee**  
Your Own Utilities™

# Electric & Gas Mission

To enrich the quality of life in Tallahassee by providing quality energy services and being leaders in our organization, community and industry.



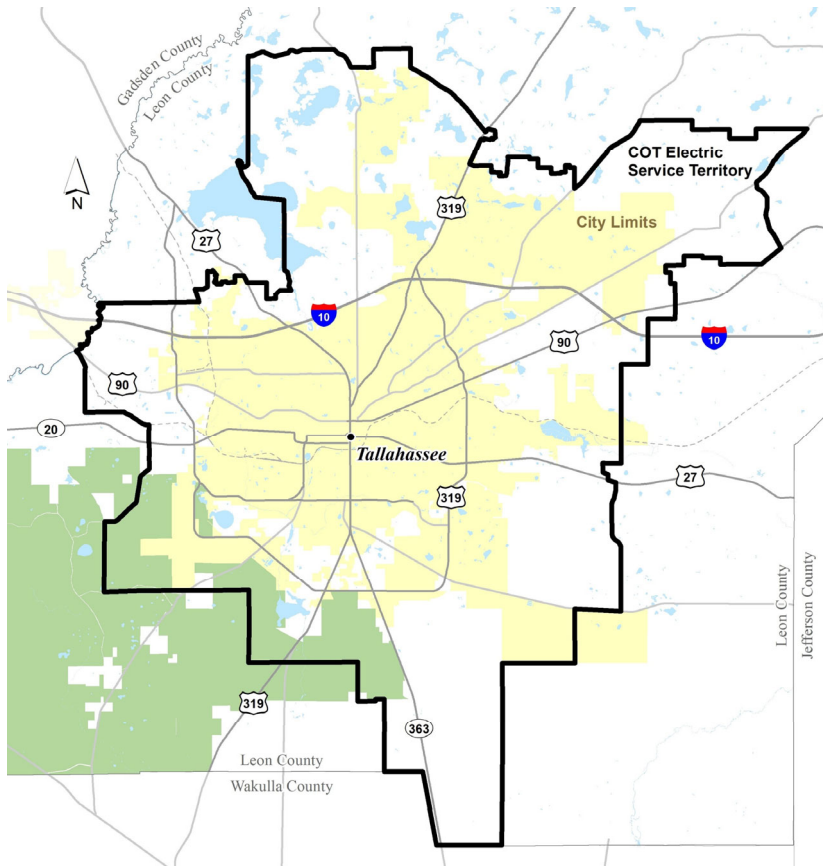
**City of Tallahassee**  
Your Own Utilities™

# Electric & Gas Utility

- Electric began commercial operation in 1902, Gas in 1956
- Each are the 4th largest municipal utility in Florida
- Each are the 27th largest municipal utility in United States (>2000 electric and >1000 gas)
- 330 Regular Full Time Employees
- 7 Divisions



# Service Territory - Electric

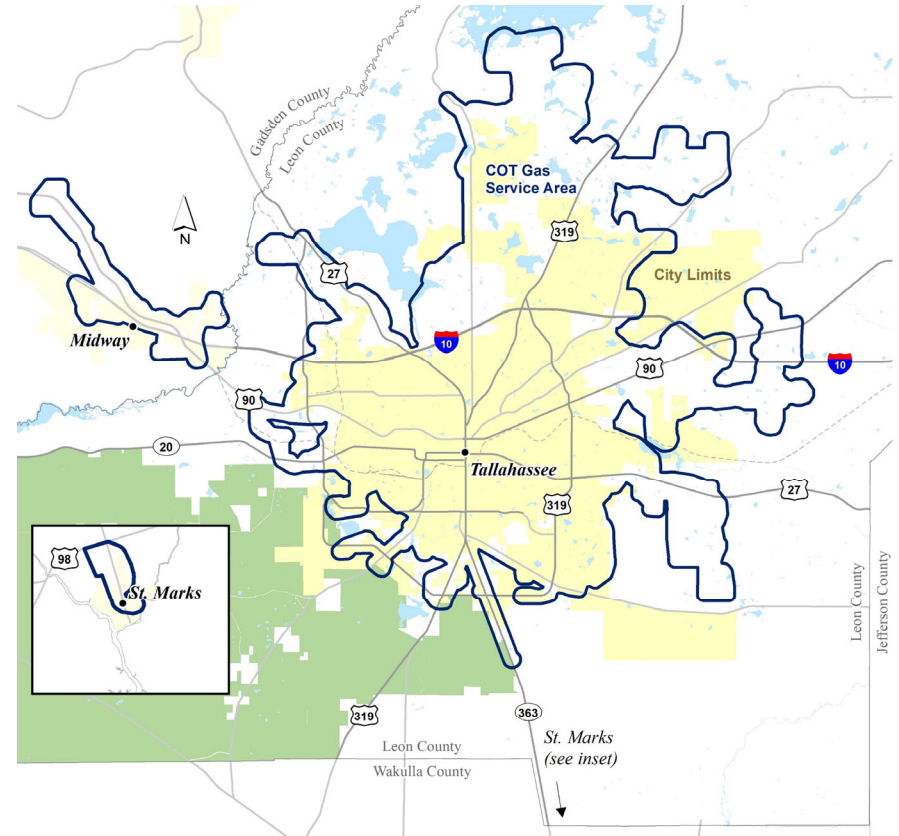


- 221 square mile service territory (regulated)
  - Includes portions of the unincorporated area of the County
- 124,000 + customers
- Vertically Integrated
  - 5 power generation facilities
    - 633 MW electric peak demand (Jan 2010)
    - 725 MW of electric natural gas generation
    - 62 MW of renewable solar generation
  - 219 miles of high voltage transmission
  - 3,600 miles primary/secondary distribution
    - >28,000 transformers
    - >64,000 poles



# Service Territory - Gas

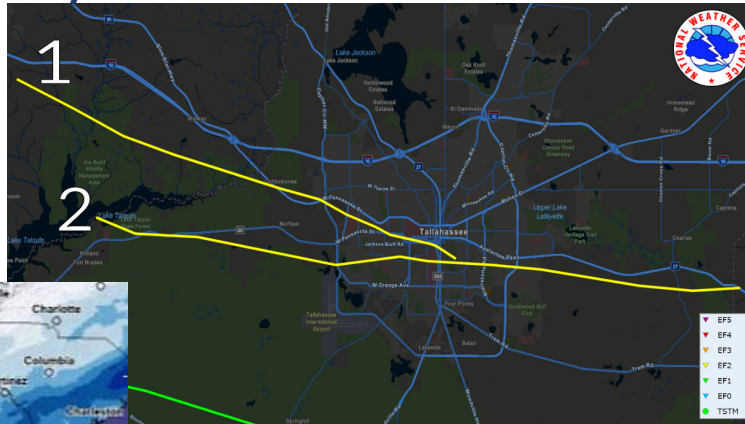
- Not regulated
- 3 Counties
  - Leon
  - Wakulla
  - Gadsden
- Local Distribution Only
- 3 million MCF annual gas sales
- 35,000 customers
- 21 district regulating stations
- 950 miles of pipe



**City of Tallahassee**  
Your Own Utilities™

# Active Year!

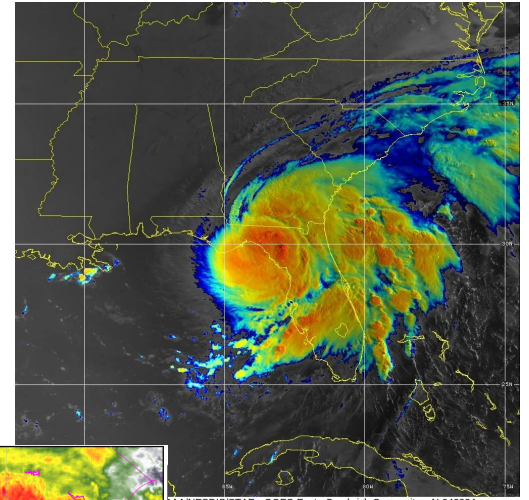
May 10 Tornadoes



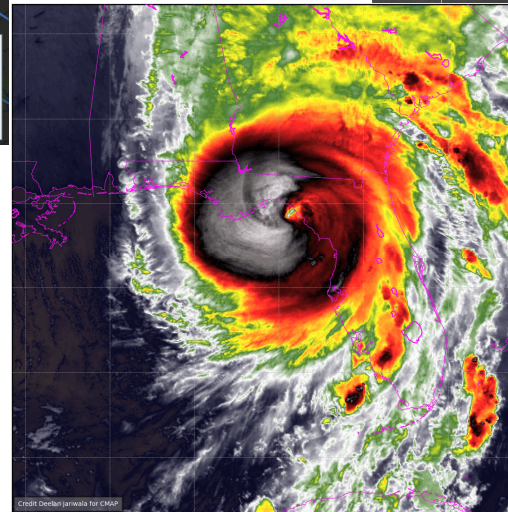
Winter Storm Enzo



Hurricane Debby



Hurricane Helene



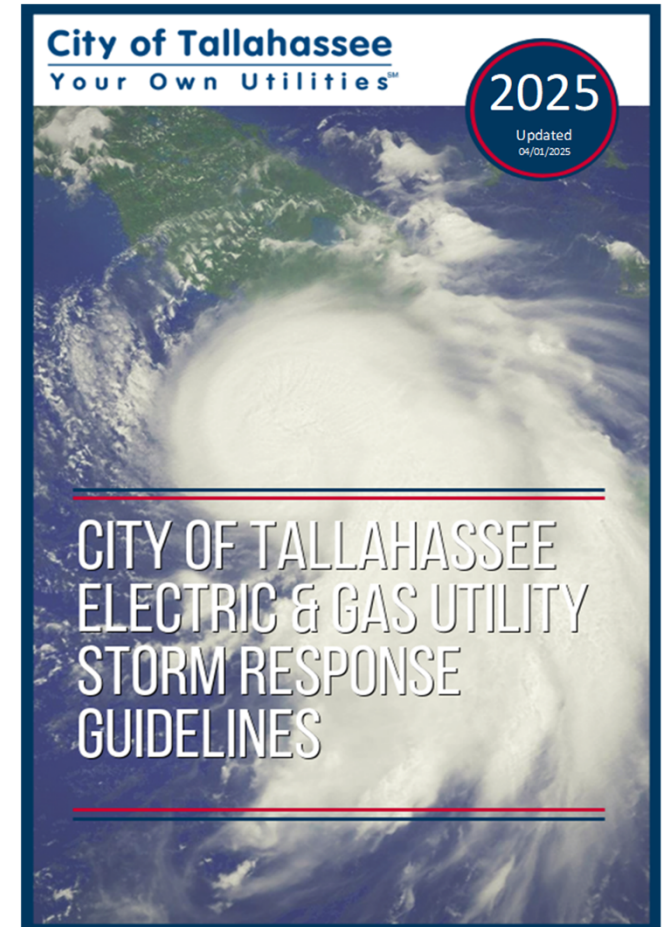
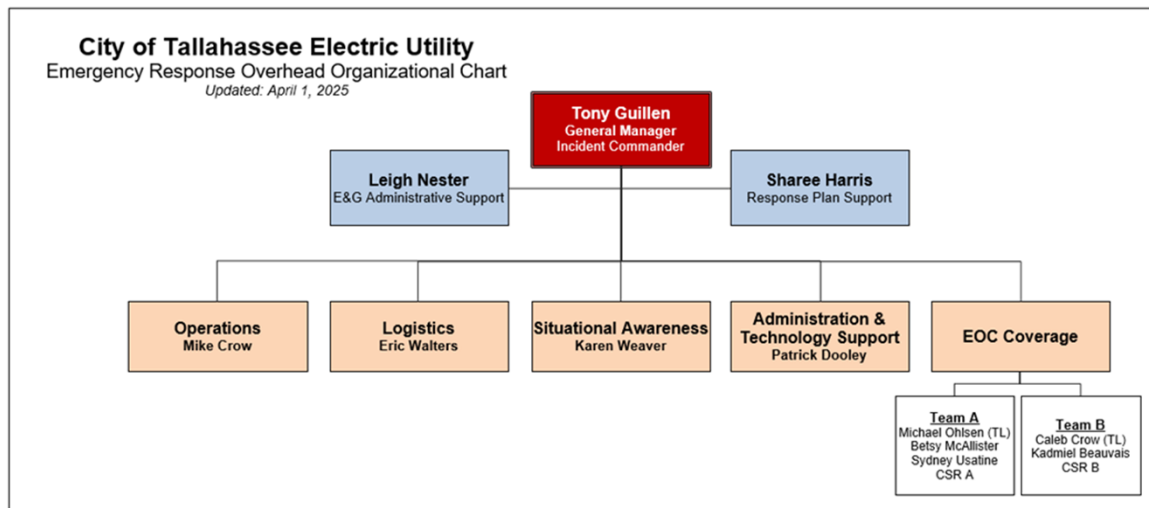
DAANESDIS/STAR - GOES-East - Sandwich Composite - AL042024



**City of Tallahassee**  
Your Own Utilities™



# E&G Storm Plan



# 2025 Storm Preparation

## Storm Prep for 2025

- Exercised out plan four times in 12 months!
- Annual Electric & Gas Department Storm Plan review and update
- Annual Pre Storm-Meeting with Leon County EOC, County Public Work & City UUPI
- FMEA Hurricane Forum
- FCG Mutual Aid Working Group Annual Workshop

## Mutual Aid Agreements

- Over 2,000 Public Power utilities through APPA
- Over 800 Cooperatives through APPA
- Bi-lateral Agreements with 7 IOU's
  - FPL, Duke, TECO, Florida Public Utilities, Alabama Power, Mississippi Power





# 2025 Storm Preparation

## Vegetation Management

- Completed our enhanced tree trimming in January 2025
- Maintain 8-12 feet clearance
- Target 18 to 24-month cycle

## Pole Inspections

- 8 Year Inspection Cycle

## Storm Hardening

- Implementation of automated distribution – TripSavers
- City standard is underground for all new subdivisions and development
- City supports overhead to underground conversion
  - Pays 100% of all branch conversion if customers pay the delivery point modifications
  - Pays 25% of the feeder circuit conversion cost if requestor pays customer delivery and provides easements



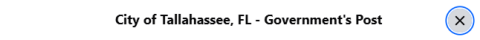
# Customer/Stakeholder Outreach & Communication



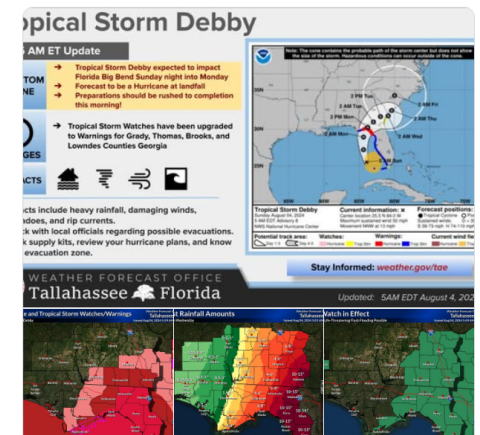
#Hurricane season runs from June 1 to November 30, and the City continues to actively prepare. During a natural disaster, there may be a time when responders cannot reach you. You are your best first line of defense. Get prep tips in the June Insight. [bit.ly/4aNijQn](https://bit.ly/4aNijQn)



The prevalence of emergency generators for use in the event of a power outage, especially following a hurricane or other severe weather event, is growing. The City advises residents to use caution when operating these machines and follow the manufacturer's instructions to reduce your risk and any risk to crews working nearby. Learn more in Insight: <https://bit.ly/3Qvfo7M>



8/4/24, 6:15am: Stay informed as TS Debby develops and impacts our area. Check the [US National Weather Service Tallahassee Florida](https://www.tal.gov/cotnews/cotnews) and NOAA NWS National Hurricane Center pages for weather updates. Sign up for text alerts from the City of Tallahassee at <https://www.tal.gov/cotnews/cotnews>



**City of Tallahassee**  
Your Own Utilities™

# Customer/Stakeholder Outreach & Communication



Promote

The first wave of mutual aid has arrived with additional crews anticipated to be in town within the hour. Crews are currently focused on repairing transmission lines.



You can play a large role in how your neighbors fare before, during and after a hurricane. #HurricanePrep #HurricaneStrong @NOAA  
[noaa.gov/use-caution-af-...](https://noaa.gov/use-caution-af-...)

**Hurricane Preparedness**  
**Use Caution After Storms**

- ➡ If you evacuated, only return home when directed it's safe to do so
- ⚠️ Remain vigilant, as hazards remain: heat, downed powerlines, floodwaters, & more
- 🧼 Clean up safely: don't push yourself, and check on neighbors
- 🚗 Only use generators outdoors, 20+ feet from your home
- 📶 Prepare for the likelihood that help and communications may not be available

**City of Tallahassee, FL - Government's Post**

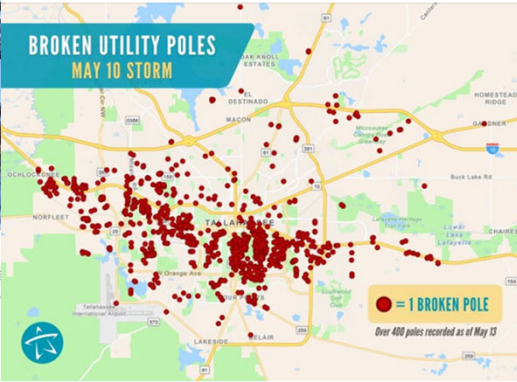
City of Tallahassee, FL - Government  
Published by Spread Social  
January 22 · 🌐

1/22, 7:45am Progress Update: Emergency crews worked overnight to address issues a-working throughout today  
🚧 Road clearing crews spread more than 40 tons of sand over roadways including 251 work continues, please stay off the roads. They are not safe for travel.  
⚡ Electric crews restored power to 10 circuits and approximately 12,000 customers or Approximately 500 are without power currently. Crews are actively working and will co throughout the day. Additional outages could occur.  
🚚 Residents should stay off the roads for their safety and the safety of emergency res

Promote



Damage assessments from Friday's storm have confirmed over 400 broken utility poles, exceeding Hurricanes Hermine, Irma and Michael combined. As seen in the map, the concentration of broken utility poles closely follows the path of the three NWS confirmed tornadoes. As debris continues being cleared and damages continue to be assessed, we are getting a clearer picture of the storm's tremendous impact. The City has been working diligently to rebuild electric infrastructure that was damaged or destroyed by the tornadoes. Replacing each broken utility pole takes several hours depending on damage and resources/equipment needed. Watch this video to learn more about the process of replacing broken utility poles: [https://youtu.be/Cue\\_JHprVc](https://youtu.be/Cue_JHprVc)



**City Crews Responding to Extensive Damage Following Severe Weather**  
An intense weather system with winds reported between 80-100 mph moved through Tallahassee this morning, May 10, leaving behind a trail of destruction. The National Weather Service is assessing paths of three possible tornadoes. The maximum state resources have been requested.  
City crews continue working to clear roads of fallen trees, broken branches and other debris. Additional right-of-way clearing crews have been called in to assist.  
Assessment of the electric grid shows severe damage to transmission lines, impacting 11 substations. Prolonged outages are anticipated as the grid is rebuilt and repaired. Crews are actively working. Mutual aid crews from 20 utilities, including from Alabama, Florida, Louisiana, Georgia, and South Carolina are arriving to assist with restoration efforts. Damage assessment crews are taking an inventory of the damage, including broken pole counts. Early estimates indicate more than 100 poles are broken. Crews will work around the clock until service is restored. More than half of the City's electric customers are without service due to impacts, totaling over 80,000 power outages.  
Solid waste collection was suspended for today, May 10, and is anticipated to resume tomorrow, Saturday, May 11.  
All youth and adult sports/activities through the City's Parks and Recreation scheduled for Friday, May 10, are canceled. Waste Viewport Pool and Jake Gaither Golf Course are closed for the day. Hillman Golf Course is closed until further notice.  
All StarMetro routes are impacted by storm-related road blockages. Individual routes will resume service as roads are declared safe.  
To report service issues, please use the City's free DigTally app or call 850-891-4968. Call wait times are longer than usual.



📺 Boost this post to get more reach for City of Tallahassee, FL - Government  
👍 51 2 comments 34 shares

# Customer/Stakeholder Outreach & Communication

May 11, 2024 at 6:10 PM

CityofTLH: All focus is on rebuilding the electric system, and restoration efforts are currently on schedule. Restoration is now at 63% after two EF-2 tornadoes tore through Tallahassee yesterday. Updates to the online outage map are delayed as restoration efforts have progressed faster than database updates.

May 12, 2024 at 6:25 PM

CityofTLH: Additional mutual aid crews, now totaling 400, arrived earlier today and are working to assist City crews in rebuilding portions of the electric system. Restoration resources are now 5X normal strength. Work will continue non-stop 24/7 until all power has been restored. In response to an alert from the National Weather Service warning of potential bad weather on Monday and into Tuesday, Public Infrastructure crews will be opening sandbag locations tomorrow.

May 14, 2024 at 11:37 AM

CityofTLH: City crews, with support from 27 mutual aid utilities, continue rebuilding the electric grid. Progress continues, and it's expected that rebuilding efforts in the most impacted areas will last through Friday, followed by work on individual and isolated outages to buildings that were damaged. Work is ongoing with additional storms expected this afternoon and clearing tomorrow morning.



**City of Tallahassee**  
Your Own Utilities™

# Lessons Learned from 2024 Storm Season

- The City's Storm Response has been tested and works very well
- Made Updates to the E&G Storm Response Guidelines
  - Staffing adjustments for support personnel
  - Documented Laundry Plan after opportunity to practice several times
  - Enhanced plan to support Right of Way Clearing crews – City, County and State
- Procuring back up generators to assist with housing support for Mutual Aid
- Mutual Aid Works!!!



# Highlights from 2024 Storm

- Zero Accidents
- Mutual Aid Received
  - May 10 Tornadoes
  - Hurricane Debby
  - Hurricane Helene
- Mutual Aid Provided
  - Lafayette and Houma Louisiana
  - Suwanee Valley Electric Coop – Hurricane Helene
  - Lakeland Electric – Hurricane Milton
  - Marietta, GA – Ice Storm





# Questions?



The FMEA  
**RESTORING  
COMMUNITIES**  
2022 Awards

