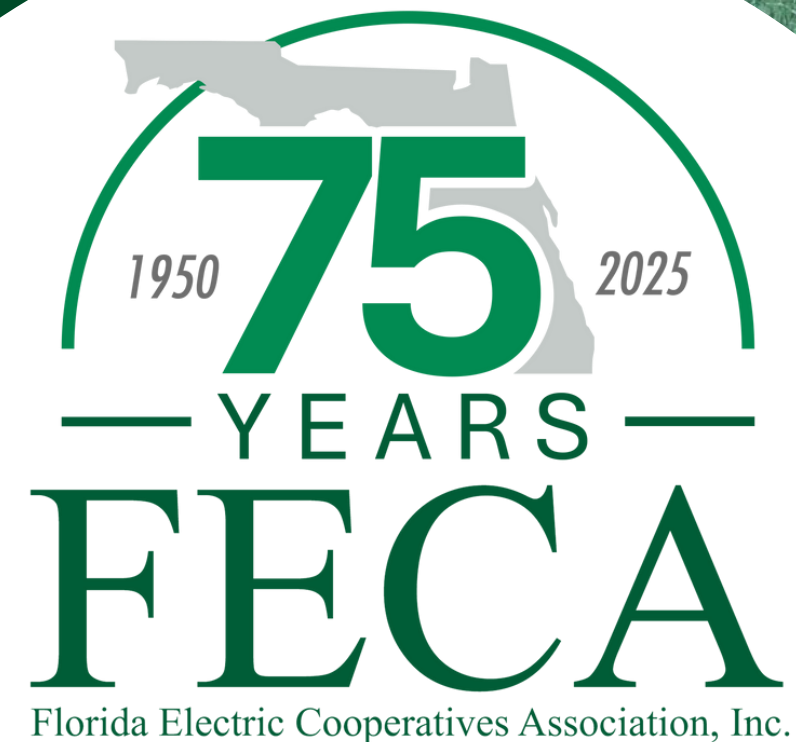


05/13/2025

# FPSC 2025 Hurricane Preparedness Workshop

Forrest Boone  
Director of Regulatory Affairs



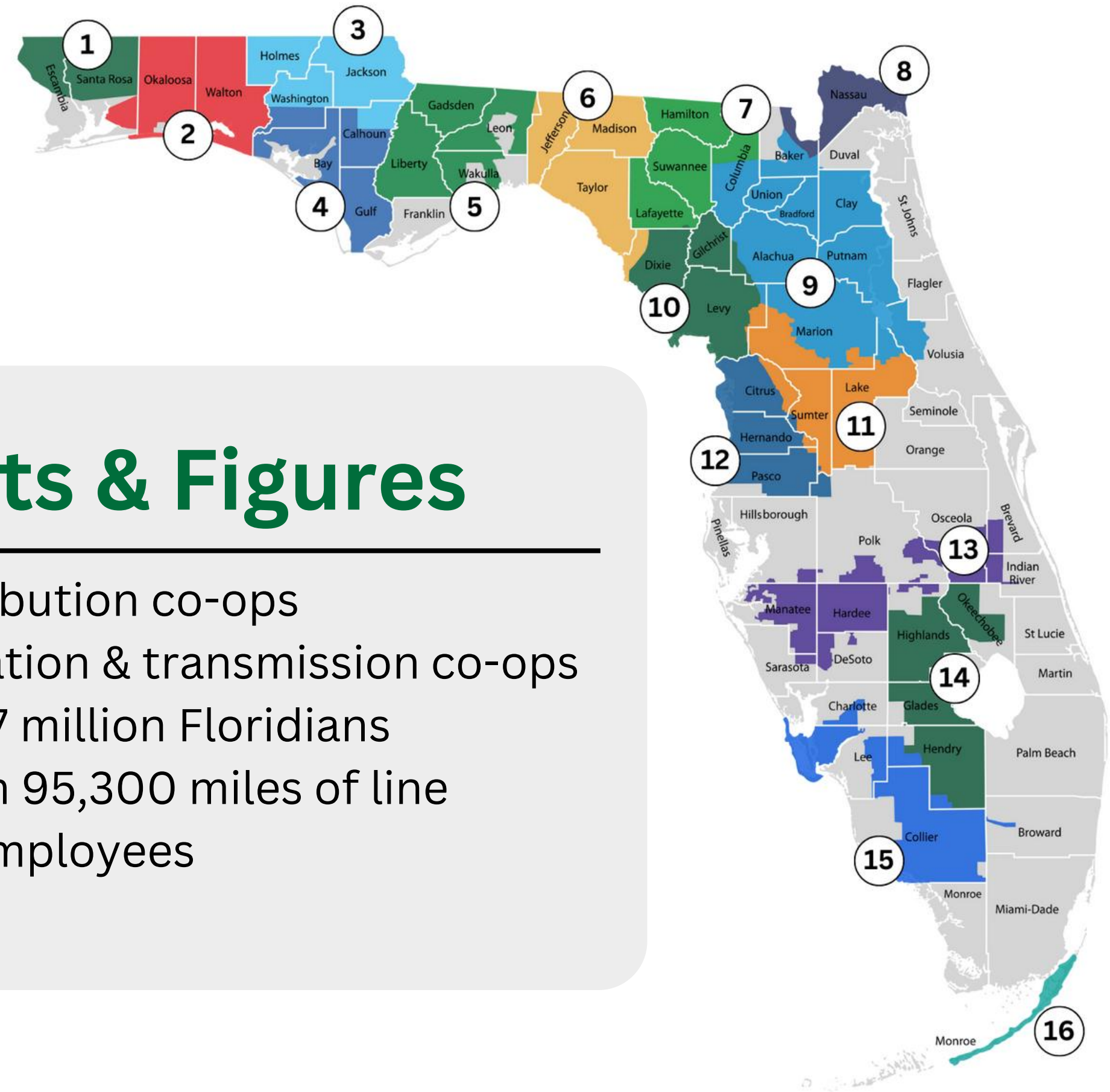
# FLORIDA'S ELECTRIC COOPERATIVES

## DISTRIBUTION CO-OPS

1. Escambia River EC
2. CHELCO
3. Gulf Coast EC
4. West Florida EC
5. Talquin EC
6. Tri-County EC
7. Suwannee Valley EC
8. Okefenoke REMC
9. Clay EC
10. Central Florida EC
11. SECO Energy
12. Withlacoochee River
13. Peace River EC
14. Glades EC
15. LCEC
16. Florida Keys EC

## TRANSMISSION CO-OPS

1. PowerSouth Energy Co-op
2. Seminole EC



## Facts & Figures

- 16 distribution co-ops
- 2 generation & transmission co-ops
- serve 2.7 million Floridians
- maintain 95,300 miles of line
- 4,200 employees





# Outreach & Communication

Emergency Operations & Elected Officials

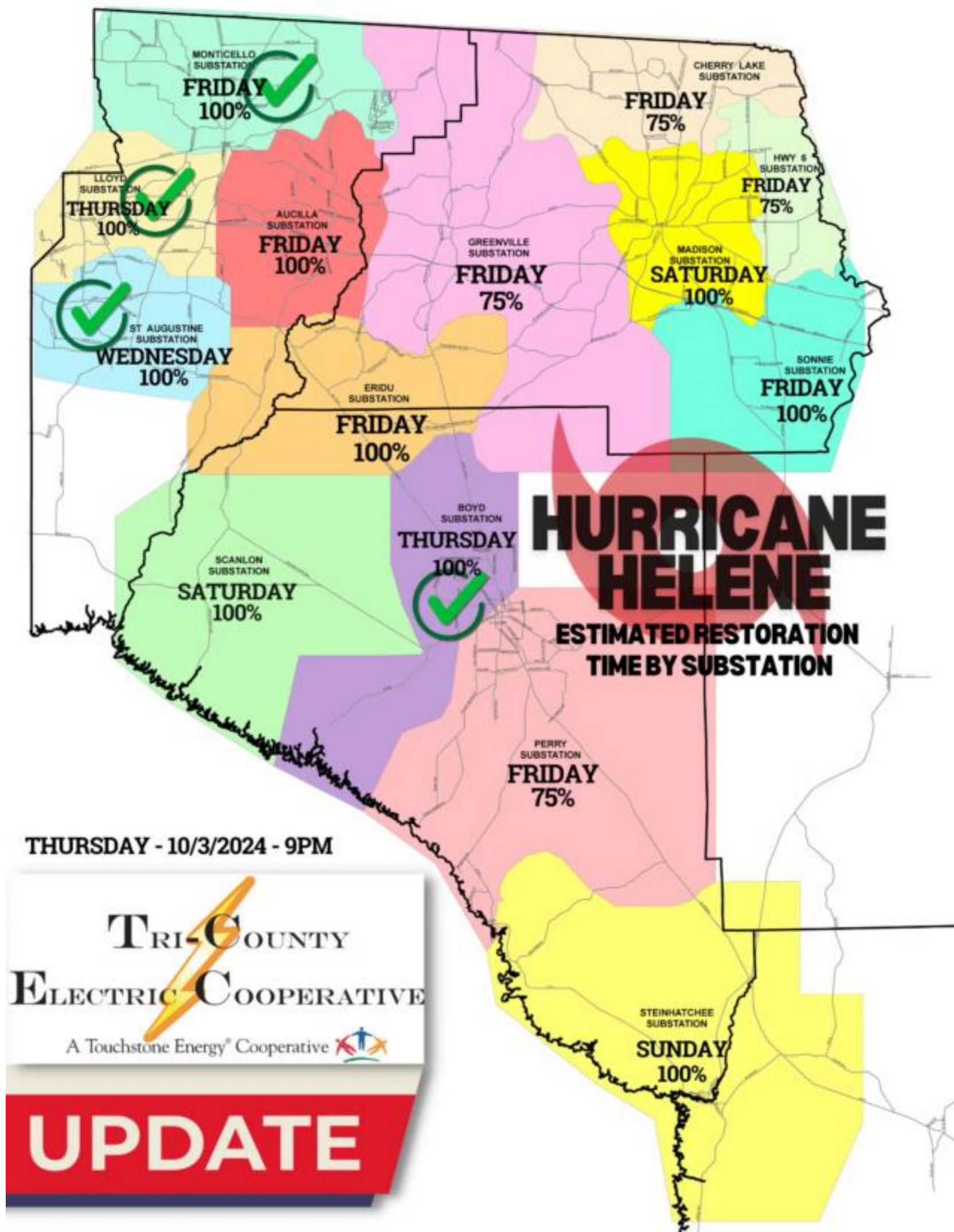
Digital Platforms

Member Outreach

Media







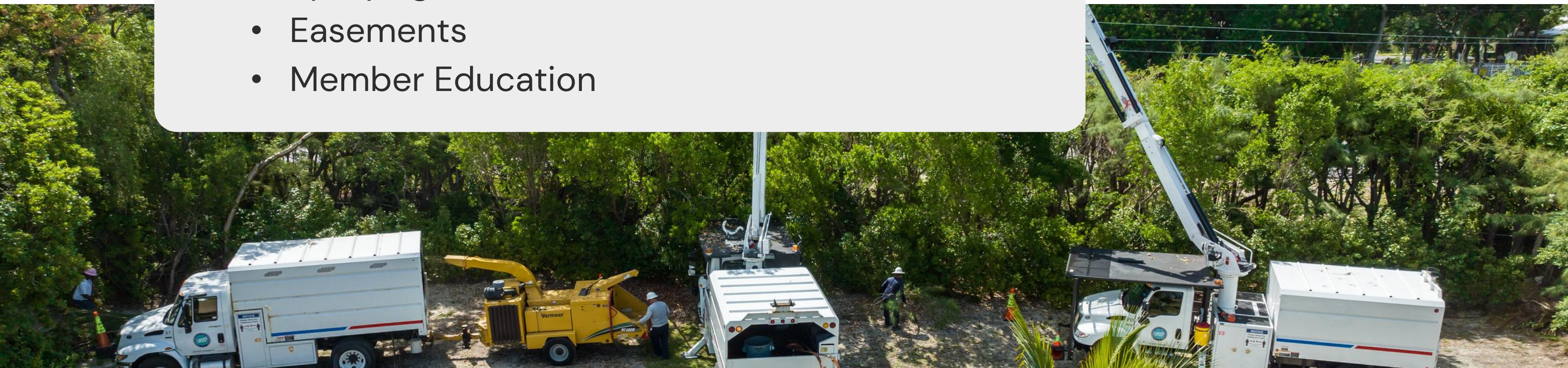




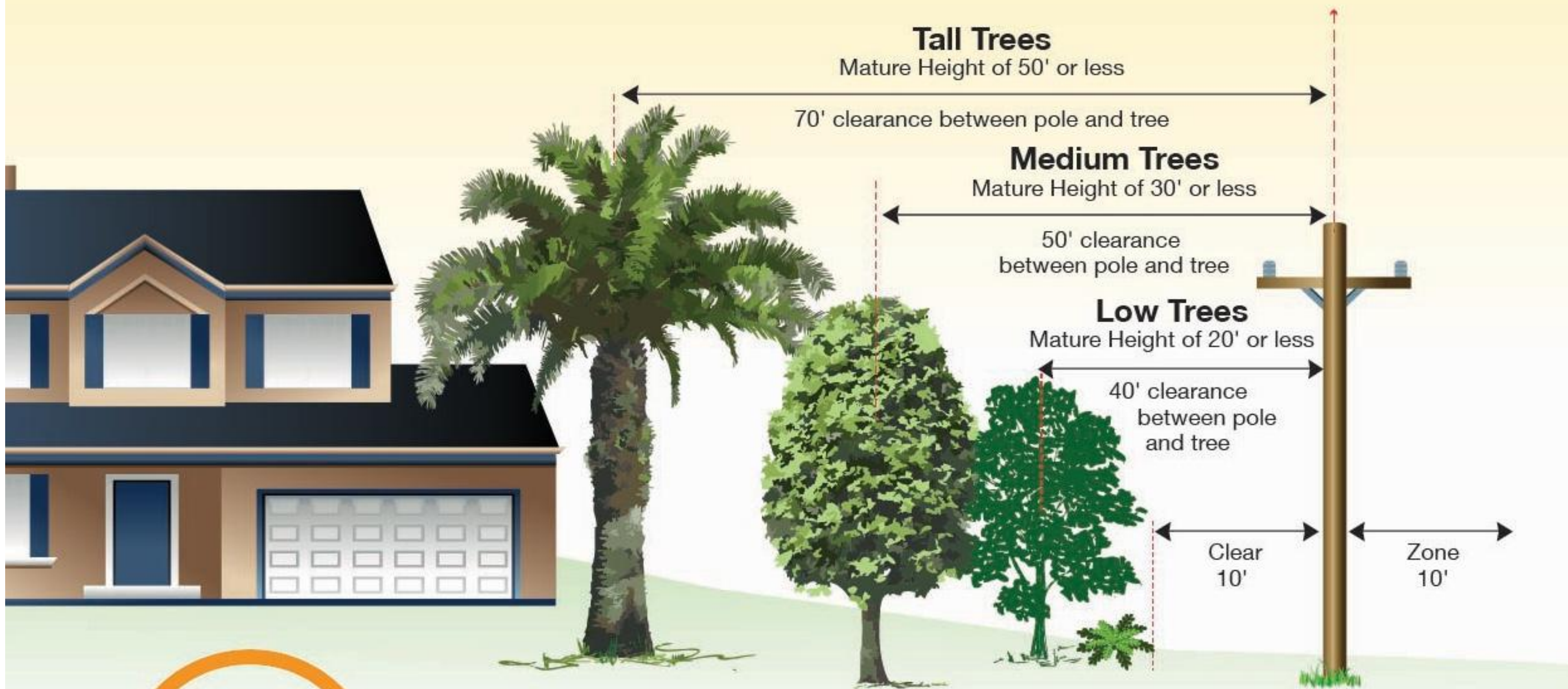


# Vegetation Management

- Regular Trim Cycle
- Hot Spot Trimming
- Spraying
- Easements
- Member Education







### Tall Trees

Mature Height of 50' or less

70' clearance between pole and tree

### Medium Trees

Mature Height of 30' or less

50' clearance between pole and tree

### Low Trees

Mature Height of 20' or less

40' clearance between pole and tree

Clear 10'

Zone 10'



Tall trees like:  
Oaks, Pines,  
Sycamore and  
most species  
of palms

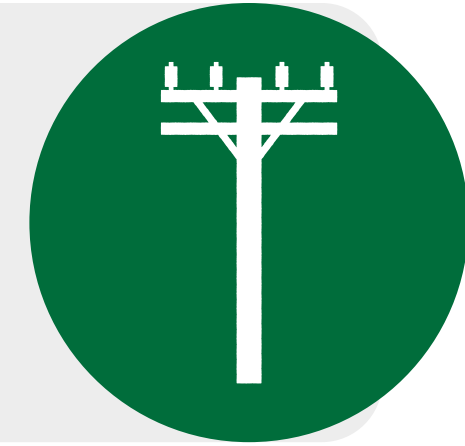
Medium trees like:  
Holly, Little Gem  
Magnolia, and  
Ligustrum

Low trees like:  
Anise, Catawba  
Crape Myrtle,  
Azalea, and  
Sweet Viburnum





# Pole Inspections



Electric Co-ops follow USDA Rural Utility Service and National Electric Safety Code Standards for Inspections.

## Inspection

Pole,  
hardware, &  
attachments

## Treatment

Preventing  
corrosion/  
decay

## Replacement

When  
necessary



# Pole Inspections

An example-PRECO

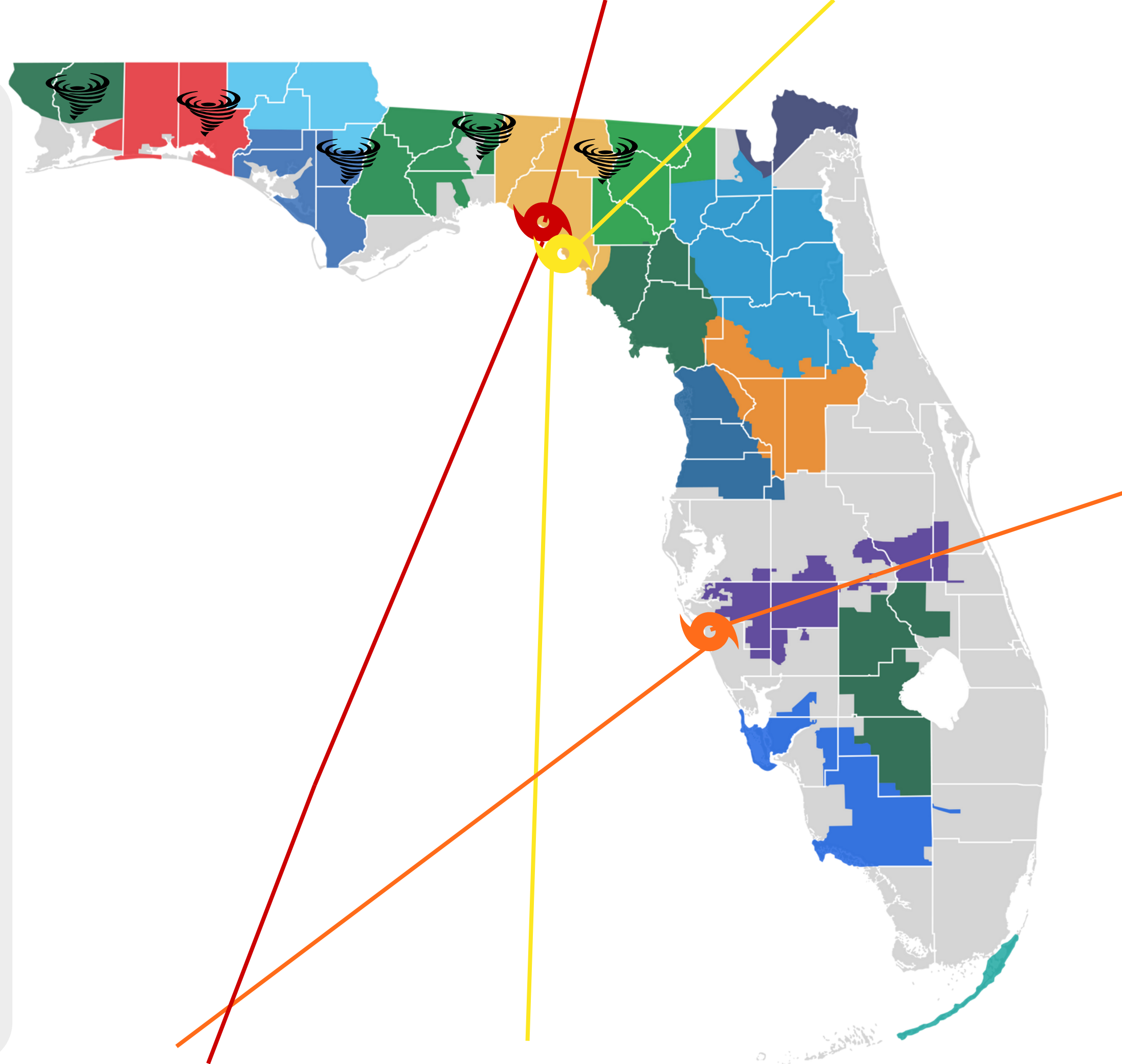
- Transmission 2-year Cycle (Approx. 383)
- Distribution 8 year-cycle, more often in problem areas (Approx. 62,801)
- Inspected 6,137-Replaced 263





# 2024 Season

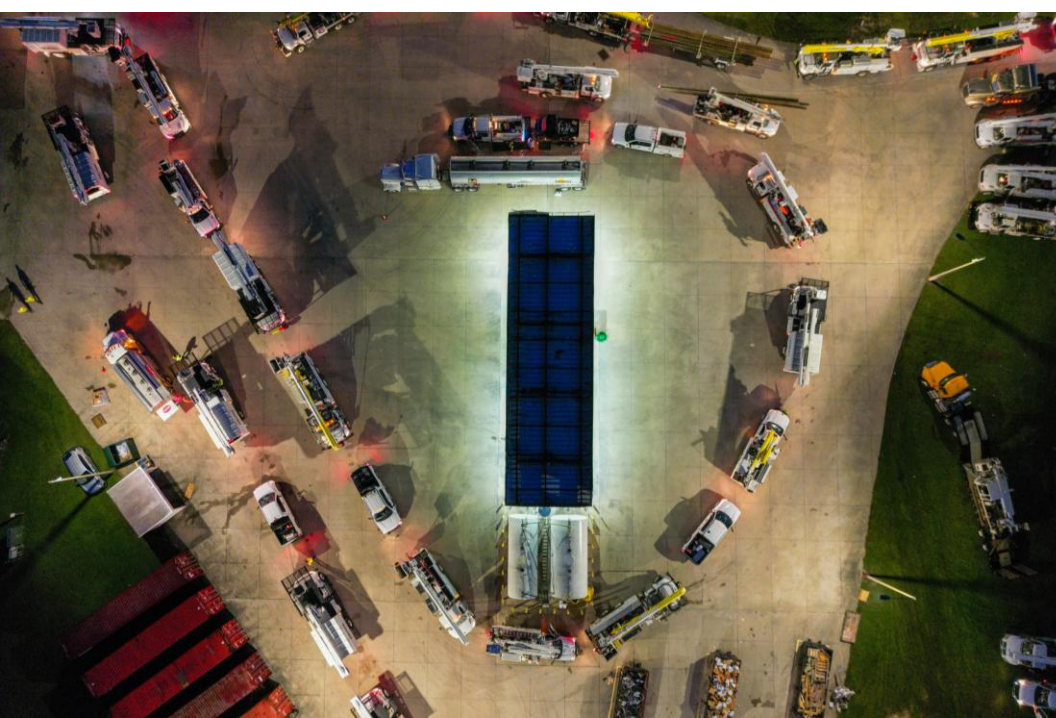
- ☄ Tornadoes- May 5 tornadoes across north Florida, 3 hitting Tallahassee alone
- 🌀 Hurricane Debby- Cat. 1 landfall on August 5 in Steinhatchee
- 🌀 Hurricane Helene- Cat. 4 landfall on September 26 in Perry
- 🌀 Hurricane Milton- Cat. 3 landfall on October 9 in Siesta Key











# Lessons Learned

- Safety First
- Securing Crews for a 2<sup>nd</sup> Storm
- Florida Has Valuable Experience to Share
- Logistics, Logistics, Logistics
- Collaboration Works



